

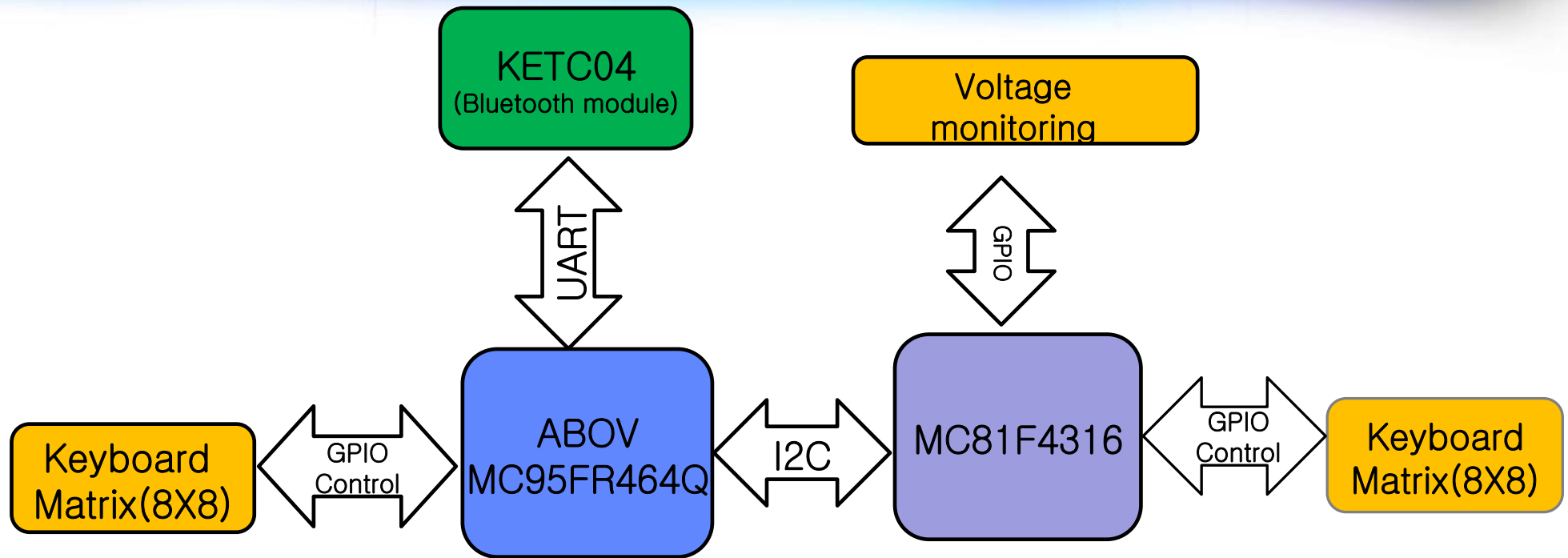
User manual  
– SWK-4210BT –

# SWK-4210BT user manual

- 1. Synopsis  
SWK-4210BT is Bluetooth 2.0 compatible keyboard.  
This device use recharge battery.
- 2. Specification

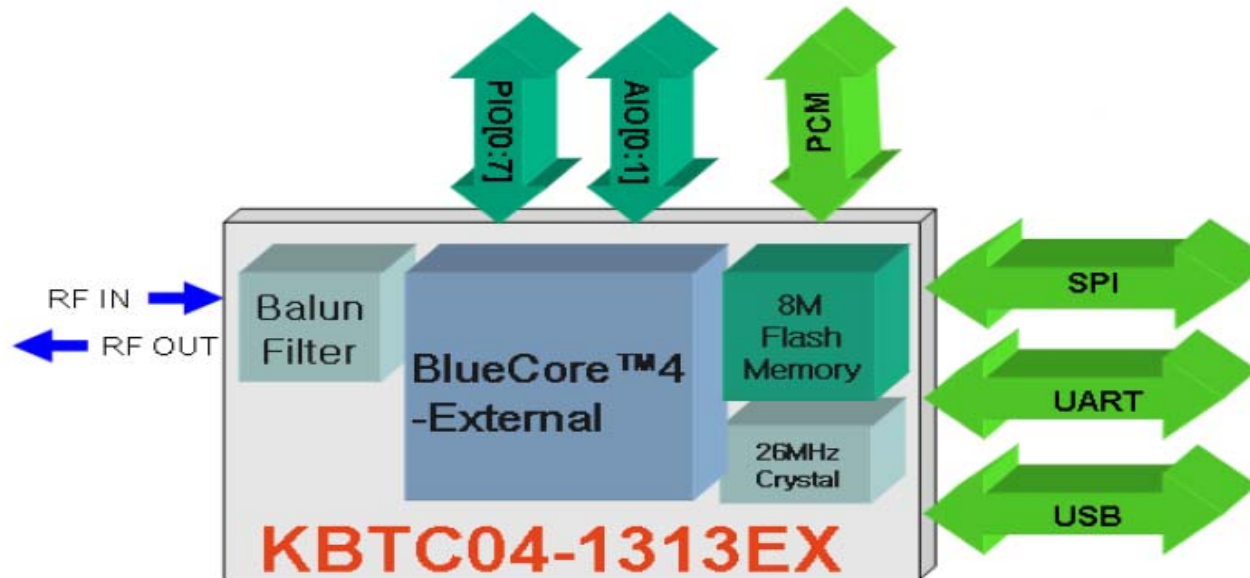
Item	SPEC
Bandwidth	2402 ~ 2480 MHz
Channel	79 CH (0~78 CH)
Modulation	GFSK
Power	3.7 V DC (Lithium charge battery)
Operation temperature	0 ~ 40 °C
Weight	485g
Size (mm)	345.2 x 129.1 x 25.5 mm

# Keyboard Block Diagram



Left key pad scan by MC95FR464Q, and right key pad scan by MC81F4316.  
MC95FR464Q will be receive data form MC81F4316 for right scan data and voltage status using I2C protocol.  
MC95FR464Q will be send merge data(left scan data +right scan data) by UART protocol.

# KBTC04 block diagram



KBTC04 using 2.4 GHz ISM band.

Bluetooth module will be receive keyboard scan data form MC95FR464Q using UART protocol.

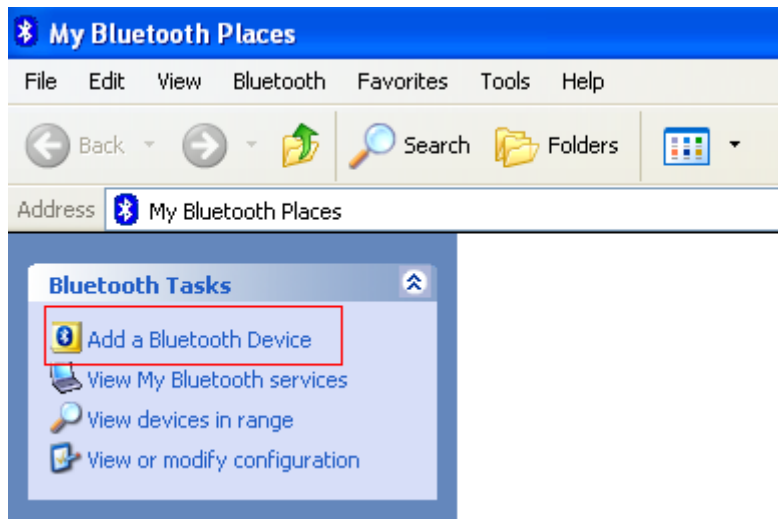
Caps lock LED and Numlock LED control normal PIO.

# User manual

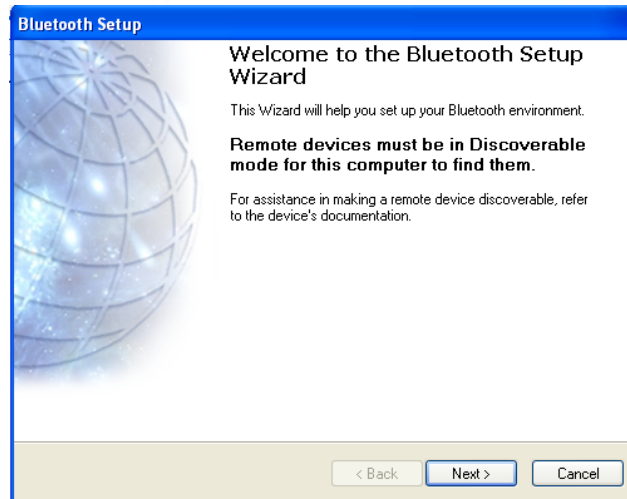
1. SWK-4210BT need to standard Bluetooth dongle.
2. Use SWK-4210BT After pairing (add device).
3. Add method:
  - (1) Push L\_CTRL + L\_ALT + L\_SHIFT + UP arrow key .
  - (2) Blink Caps lock LED.
  - (3) Click add Bluetooth device of PC.



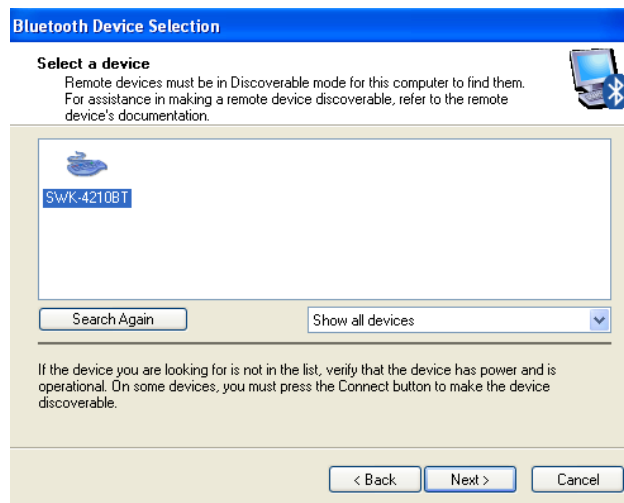
- (4) Click Add a Bluetooth Device



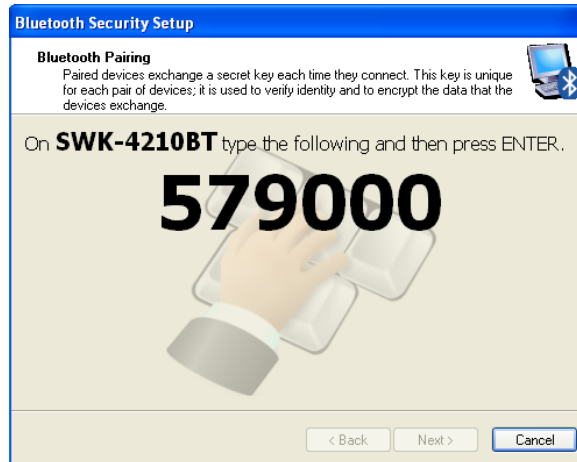
(5) Click next.



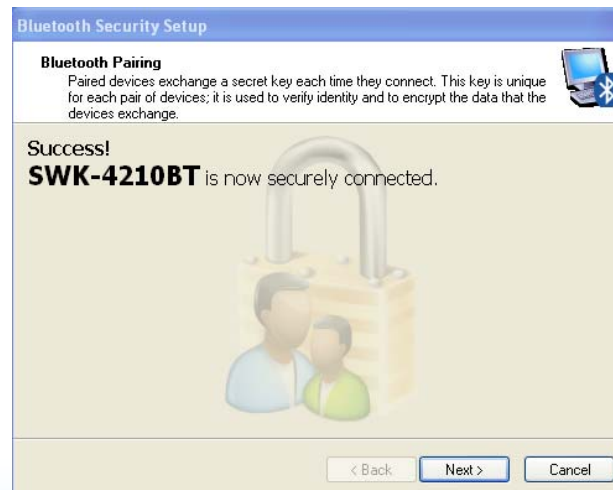
(6) Select SWK-4210BT and Click next.



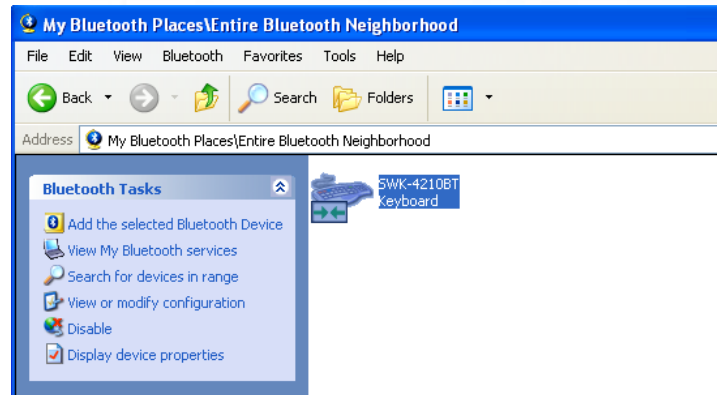
(7) Input password and Input Enter key.



(8) Click next.



(9) Add complete.

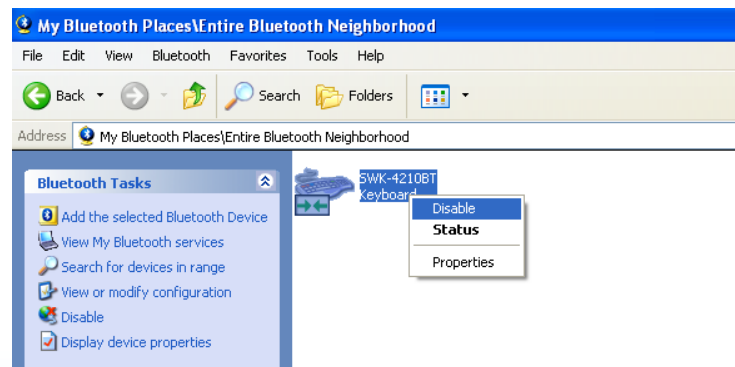


4. Remove method

(1) Select explore My Bluetooth places.



(2) Click mouse right button and then disable.





(3) Click yes.



5. Battery Indicate:

- (1) Connect USB cable, turn on RED Led.
- (2) If charge complete, turn on GREEN Led.

## RF Warning

The device has been evaluated to meet general RF exposure requirement.  
The device can be used in portable exposure condition without restriction

THIS DEVICE COMPLIES WITH PART 15 OF THE FCC RULES.

Operation is subject to the following two conditions: (1)

This device may not cause harmful interference, and (2) this device must accept any interference received,

including interference that may cause undesired operation.

**CAUTION : Changes or modifications not expressly approved by the party responsible for compliance could void the user's authority to operate the equipment.**

Note: This equipment has been tested and found to comply with the limits for a Class B digital device, pursuant to part 15 of the FCC Rules. These limits are designed to provide reasonable protection against harmful interference in a residential installation. This equipment generates, uses and can radiate radio frequency energy and, if not installed and used in accordance with the instructions, may cause harmful interference to radio communications. However, there is no guarantee that interference will not occur in a particular installation. If this equipment does cause harmful interference to radio or television reception, which can be determined by turning the equipment off and on, the user is encouraged to try to correct the interference by one or more of the following measures:

- Reorient or relocate the receiving antenna.
- Increase the separation between the equipment and receiver.
- Connect the equipment into an outlet on a circuit different from that to which the receiver is connected.
- Consult the dealer or an experienced radio/TV technician for help.

Modifications not expressly approved by the manufacturer could void the user's authority to operated the equipment under FCC rules.