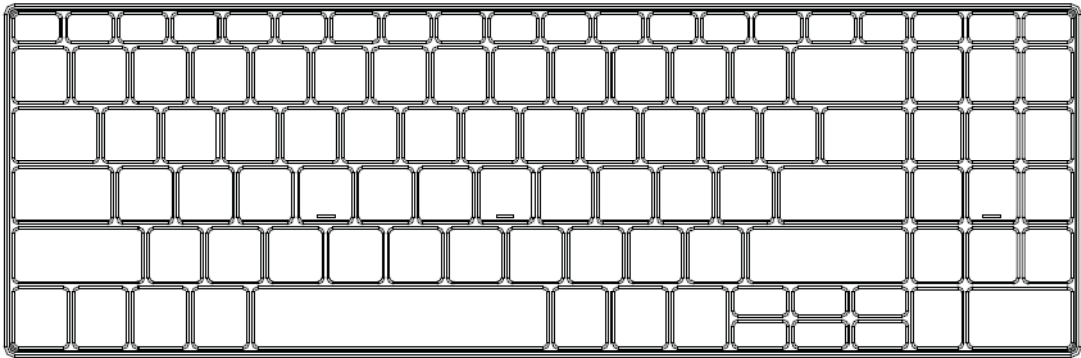


# User manual

Clean Wipe Keyboard Bluetooth



This Bluetooth Touch keyboard use Built in lithium -ion rechargeable battery.

## Charging step

This wireless touchpad built - in rechargeable battery .

- 1.When your touch pad not working smoothly due to lack of electricity , according to Figure 1 to charge the touchpad.
- 2.When your touch pad is fully charged , unplug the charging cable according to Figure 2 direction.



## Hotkeys on the keyboard

FN+F1= Brightness Down (Ipad)

FN+F2= Brightness Up (Ipad)

FN+F3= Eject (Ipad)

FN+F4= Main page(Ipad)/Home page(Windows)

FN+F5= Language-Switch (Ipad)

FN+F6= Screen Lock (Ipad)

FN+F7= Previous Track (Windwos,Ipad)

FN+F8= Play/pause (Windwos,Ipad)

FN+F9= Next Track (Windwos,Ipad)

FN+10= Mute (Windwos,Ipad)

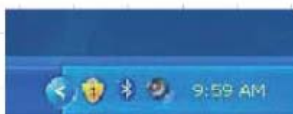
FN+11= Volume Down (Windwos,Ipad)

FN+12= Volume Up (Windwos,Ipad)

## Installing the Bluetooth Wireless Keyboard

### Installing the Bluetooth Wireless Keyboard into Your Computer

Step 1. Before using the Bluetooth keyboard with your computer, you need to check whether your computer is equipped with Bluetooth receiver.If not, you'll need to purchase an additional Bluetooth receiver and install it correctly onto your computer. Once your computer is Bluetooth-enabled, the setup applet's icon will appear in the windows taskbar as shown below.



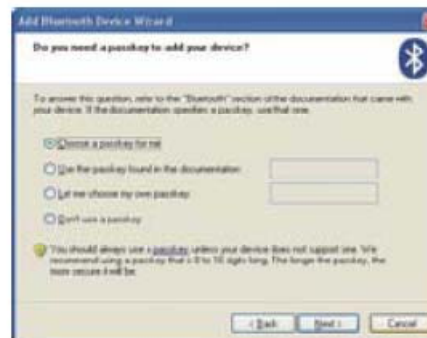
Step 2. In the windows taskbar, and select "Add setup and ready to be found", then click a Bluetooth Device" "Next".



Step 4. Your computer will now scan for Bluetooth devices in your area and display found devices. At the same time press and hold both "Esc" and "k" keys on the keyboard simultaneously.

Step 5. Select the keyboard from the list of found devices and click "Next" to continue.

Step 6. We recommend our customers to select "no password" in the below window, then click "Next" to continue.



Step 7. The system will automatically finish the installation after clicking "Finish" in below window.



# FCC Requirement

Note: This equipment has been tested and found to comply with the limits for a Class B digital device, pursuant to Part 15 of the FCC Rules. These limits are designed to provide reasonable protection against harmful interference in a residential installation. This equipment generates, uses, and can radiate radio frequency energy, and if not installed and used in accordance with the instructions, may cause harmful interference to radio communications. However, there is no guarantee that interference will not occur in a particular installation. If this equipment does cause harmful interference to radio or television reception, which can be determined by turning the equipment off and on, the user is encouraged to try to correct the interference by one or more of the following measures:

- Reorient or relocate the receiving antenna.
- Increase the separation between the equipment and receiver.
- Connect the equipment into an outlet on a circuit different from that to which the receiver is connected.
- Consult the dealer or an experienced radio/TV technician for help.

You are cautioned that changes or modifications not expressly approved by the party responsible for compliance could void your authority to operate the equipment.

M/N: SSKSV099BT

FCC ID: X7LSSKSV099BT

This device complies with Part 15 of the FCC Rules. Operation is subject to the following two conditions:

- (1) this device may not cause harmful interference, and
- (2) this device must accept any interference received, including interference that may cause undesired operation.