



ProSEAL® 44 Laminator

Owners Operation Manual



ProSEAL® 44 Pouch Board Laminator

TABLE OF CONTENTS

INTRODUCTION	4
IMPORTANT SAFEGUARDS	5
UNPACKING AND SET-UP	6
NIP CONTROL KNOB, REAR PANEL	7
CONTROL PANEL	8
MOUNTING USING A ProSEAL® MOUNTING BOARD	9
MOUNTING USING A ProSEAL® POUCH BOARD	10
ENCAPSULATING USING A ProSEAL® FLEXIBLE POUCH	11
CLEANING YOUR LAMINATOR	12
TROUBLESHOOTING GUIDE	13
SPARE PARTS	14
GLOSSARY OF TERMS	15
TECHNICAL SPECIFICATIONS	16
LIMITED WARRANTY	17
ProSEAL® CONTACT INFORMATION	18

INTRODUCTION

Thank you for purchasing a ProSEAL laminator. We have designed the ProSEAL Laminator to give you years of reliable service. As you become familiar with the ProSEAL Laminator, you will appreciate the high quality of its production and the excellence in its engineering design.

By following the guidelines for proper care and use of the ProSEAL Laminator, you can depend on many years of trouble-free profitability from your investment.

The purpose of this manual is to outline materials and processes. This manual will show you how to use ProSEAL supplies with your laminator to create signs, displays, and flexible graphics with professional results. The manual includes instructions of various laminating procedures, which are meant to give you comprehensive information needed for the efficient use of your laminator.

Please read and fully understand the entire manual before proceeding to use your laminator.

STATEMENT OF INTENDED USE

Your ProSEAL Laminator meets the standards of UL 775 and CAN/CSA C22.2 No. 60950.

The ProSEAL Laminator has been designed to be used with ProSEAL Pouch Boards and ProSEAL Flexible Pouches. When used with these products, you are able to laminate and encapsulate prints in one step. Your laminator has not been tested with any other materials and is not recommended for use with products other than ProSEAL supplies.

WARNING! This laminator is designed for mounting and laminating. Any use other than the intended may cause damage to the laminator or physical harm to the user.

WARNING! Any unauthorized changes or modifications to this unit without our prior written approval will void the user's warranty and will transfer health and safety obligations to the user.

LIABILITY STATEMENT

The details given in this manual are based on the most recent information available to us. They may be subject to change in the future. We retain the right to make changes to the construction or the design of our products without accepting any responsibility for modifying earlier versions previously delivered.

CAUTION! Please pay attention to all passages marked this way. This information is vital to preventing user injury and/or damage to the unit. Failure to follow this information could void the user's warranties and transfer all safety obligations to the user.

IMPORTANT SAFEGUARDS

When using electrical appliances, basic precautions should always be taken to reduce the risk of electrical shock and injury to persons, including the following:

1. Read all instructions before connecting or operating this unit.
2. Retain this Owners Manual for future reference. For technical assistance beyond what is covered in this manual contact Technical Service.
3. Save your carton! ProSEAL laminators are shipped in special cartons and should be used in case your ProSEAL laminator should ever require service or need to be transported.
7. This unit should be situated away from heat sources such as heat register or stoves/ovens.
8. The laminator's location or position should not interfere with its proper ventilation. Do not install or place in a built-in enclosure such as a bookcase.
9. Do not operate the laminator with a damaged cord or plug, or after the laminator has been dropped or damaged in any manner. If purchased in U.S./Canada, return the laminator to SEAL Graphics or if purchased in Europe or Asia, return to your ProSEAL reseller for examination, repair or adjustment.

NOTICE! Failure to return machines properly packed in original packaging will impose a fifteen percent restocking fee plus costs to repair shipping damage. Contact Technical Service for a return authorization (see rear cover).

4. Do not use the laminator for other than its intended use.
5. The Laminator case may be cleaned with a lint-free cloth, lightly dampened with a mild soap and water solution. Do not use spray-on cleaners.

NOTE: Disconnect the laminator from the main power supply before cleaning!

6. Do not immerse any part of the laminator in water or other liquids.

10. Do not let the cord hang over the edge of a counter/bench or touch hot surfaces.
11. Always unplug the laminator when it is not in use for a long period.
12. This unit should only be connected to a power supply outlet of the voltage, amperage, and frequency marked on the rear panel. The laminator has a grounded plug (three prongs). To reduce the risk of electrical shock, this plug is intended to fit only a grounded outlet of the proper amperage, and in only one way. If it does not fit in the outlet, contact a qualified electrician.

WARNING! Do not modify the plug in any way.

UNPACKING AND SET-UP

The ProSEAL 44 is a professional laminator designed for ease of use. The process speed and temperature have been preset to eliminate operator guesswork. The factory setting will facilitate good quality results using the ProSEAL Flexible Pouches and Pouch Boards.

The ProSEAL 44 can handle Flexible Pouches and Pouch Boards up to 44 inches (1120mm) wide.

Please familiarize yourself with machine operation before installation, operating the Control Panel and the Nip Control Knob.

Installation of your ProSEAL Laminator

Please read and fully understand the entire manual before proceeding to use your laminator.

Your ProSEAL laminator must be lifted and carried to the place where it will be used. This should be done by at least two people, one on each side. Grasp the machine 8-10 inches (20cm-25cm) from the side. It should only be placed on a sturdy, clean, flat, level surface able to support 111 lbs. (50kg).

Keep the area around your laminator clear with adequate space around it so you can feed, receive and trim mounted and/or laminated images.

Unpacking your Laminator

1. Open the box, and lift the machine out (at least two persons necessary!). Grasp the machine 8"-10" (200mm-250mm) from either side, at the bottom metal parts. Be careful! The polyethylene bag is slippery!
2. Place the machine on the work area described above.
3. Remove the protective expanded polystyrene foam.
4. Remove the polyethylene bag.
5. Inspect the machine for any physical damage (if damage does exist, report this to the Freight Company or Dealer to file a claim). Contact Technical Service (see rear cover) to determine if a replacement machine should be shipped to you.

NOTICE! Retain original packaging. Failure to return machines properly packed in original packaging will impose a fifteen percent restocking fee plus costs to repair shipping damage. Contact Technical Service for Return Authorization (see rear cover).

Setting up your Laminator

The ProSEAL laminator should be installed next to a power/main outlet. If an extension cord is needed, make sure the cord rating meets or exceeds the machine rating.

The plug and the outlet must be easily accessible. Please ensure that you plug your laminator into a grounded, EARTHED, three-prong outlet. Please ensure that the total load of the other items using the same circuit breaker do not exceed its breaking value.

The US versions of the ProSEAL machines are provided with a fixed power cable and NEMA 5-15 plug.

Use 120Vac 15A or 20A grounded outlet only.



15A

or



20A

Using your ProSEAL 44

- Plug the power cable into the grounded outlet with appropriate service as described above.
- Turn on power with main power switch. Roller will turn continuously while power is on.
- Wait 10-15 minutes to determine if the unit has achieved operating temperature **Note:** The LED indicator will blink until the machine is up to temperature.
- When LED indicator is constantly lit, the ProSEAL laminator is ready for use.

CAUTION! Set the Nip Control Knob to the "Open" position when not in use.

NOTE: The laminator may emit vapors the first few times it is used. This is normal and will cease after several minutes of use.

NIP CONTROL KNOB

The Control Knob (see figure 1) is located on the right hand side of the laminator and should be operated from this side. The control knob is used to adjust the height of the rollers.

The Nip Settings are 1/4" (6mm), 3/16" (5mm), 1/8" (3mm) and 1/16" (1.5mm) correspond to Pouch Board thickness. There is also a fully closed position - 0" (0mm) for future film only applications. Select the setting that indicates the thickness of the material you will be using.

To Operate the Nip Control Knob

1. Grasp it with your right hand and push in approximately 1/4" (6mm).
2. Once the knob has disengaged from the stop, it may be rotated forward or backward (clockwise or counterclockwise, as viewed from the right hand side of the unit).
3. Once the arrow has reached the desired nip setting, release the knob or gently pull the knob out to lock it in place. See Figure 1A.



Figure 1A Nip Control Knob

Caution! Set the Nip Control Knob to the “Open” position when not in use.

REAR PANEL

To turn the machine on and off, use the main power switch below in figure 1B.

“O” is off and “1” is on.



Figure 1B Rear Panel

Note: Always switch the power off when the machine is not in use. The heat is always on when the main power is on.

In case of Emergency: Turn off the main power switch or unplug the machine from the power outlet.

The main fuse is also located on the rear panel. The main fuse should always be replaced with the same type. The correct type is identified on a label above the fuse holder.

Caution! For continued protection against risk of fire, replace fuse with same type and rating.

CONTROL PANEL

The Control Panel (see Figure 2) is located on the top right of the machine. A diagram of the Control Panel is shown in Figure 3.

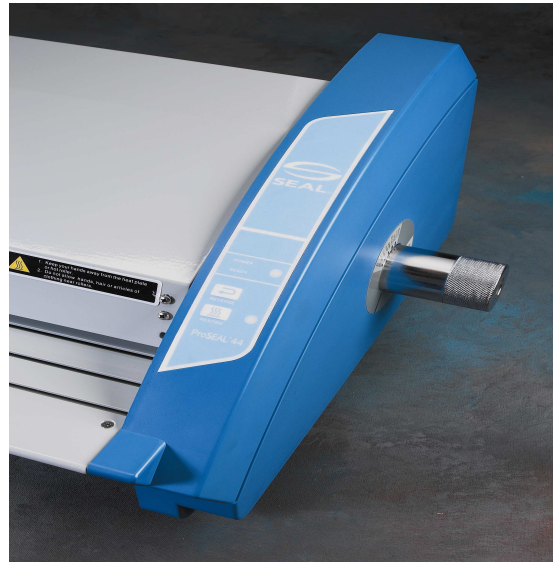
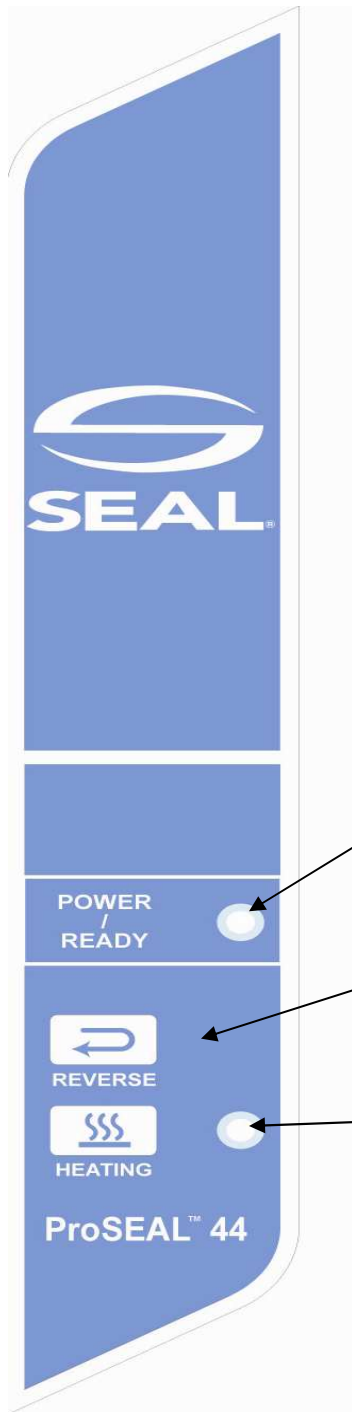


Figure 2 Control Panel Location

PANEL FUNCTIONS:

<LED> - The LED indicator tells the temperature status. If it is flashing slowly, this indicates the laminator is heating up and has not yet reached process temperature. A steady light indicates the unit has reached process temperature and is ready for use.

<REVERSE> - Pressing and holding the top button reverses the direction of the rollers. This is used to clear jams or foreign objects, should one be drawn into the laminator. In case of a jam: Either stop the laminator and/or use the Reverse Feature.

<HEATING> - Pressing the button turns the heater on and off. The LED indicator will remain lit when the heating element is on.

In case of Emergency: Turn off the main power switch or unplug the machine from the power outlet.

MOUNTING USING A ProSEAL MOUNTING BOARD

Using a ProSEAL Mounting Board

Refer to the instruction sheet packed with each box of ProSEAL Mounting Boards for specific information on mounting with a ProSEAL Board.

Also, refer to the instruction sheet for information on Compatible Media, Process Conditions and technical information. Place the image to be mounted on the adhesive-coated side of the mounting board (dull side of the board).

Cover your print with the "cover sheet" as marked (included with each box of ProSEAL Mounting Boards). Please be sure that the board is completely covered by this sheet.

Set the Nip knob to the correct setting that matches the Mounting Board thickness.

Insert the board into the inlet opening. Ensure the board will enter centered and straight. A gentle push may be required to start the board into the laminator.

Hold the edges of the board until it is engaged in the unit and the laminator begins pulling it on its own.

The board will feed through the laminator and automatically exit at the rear of the unit.

CAUTION! The board will be hot! Allow it to lie flat while cooling.

CAUTION! USE ONLY WITH ProSEAL MOUNTING BOARDS 1/4" (6mm) THICK OR LESS. DO NOT USE PLYWOOD, METAL, CARDBOARD, SHARP OR HARD BOARD WITH RAGGED EDGES OR ANY TYPE OF PLASTIC. MAKE SURE THAT ALL MEDIA FED INTO THE LAMINATOR IS FREE OF STAPLES, PAPER CLIPS, OR OTHER HARD OBJECTS.

Foam board may be cut or trimmed using a sharp hobby knife such as an X-ACTO Knife.

Lightly score the paper first. Several passes of the knife may be required.

NOTE: Ragged cuts or pulling of the foam board indicates a dull blade.

MOUNTING USING A ProSEAL POUCH BOARD

Refer to the instruction sheet packed with each box of ProSEAL Pouch Boards for specific information on mounting/laminating with a ProSEAL Board.

In addition, refer to the instruction sheet for information on Compatible Media, Process Conditions and technical information.

Carefully examine the board to determine which edge is sealed. There is a 1/8" (3mm) tape edge on the sealed end.

Starting at one of the corners, opposite the sealed edge, gently lift and peel back the film. Care should be taken not to break the sealed hinge.

Center the image to be laminated on the board and lay the film back over it.

Set the Control Knob to the correct setting that matches the Pouch Board thickness.

Ensure that the unit is set to Hot Mode and that the LED is not flashing

Slowly insert the Pouch Board into the inlet opening. Ensure that the Pouch Board will enter centered and straight. A gentle push may be required to start the board into the laminator.

Hold the edges of the Pouch Board until it is engaged and the laminator begins pulling it on its own.

The Pouch Board will feed through the laminator and automatically exit at the rear of the unit.

CAUTION! The board will be hot! Allow it to lie flat while cooling.

If there is any dirt or adhesive on the surface of the board, it can be removed by dampening a lint free cloth with Isopropyl Alcohol (IPA) and wiping the surface.

CAUTION! Always use care when using Isopropyl Alcohol (IPA)! IPA is very flammable.

The flash point of IPA is 11°C (51.8°F).

The self-ignition temperature is 400°F (752°F).

ENCAPSULATING USING A ProSEAL FLEXIBLE POUCH

Refer to the instruction sheet packed with each box for specific information on encapsulating ProSEAL Flexible Pouches.

In addition, refer to the instruction sheet for information on Compatible Media, Process Conditions and technical information.

The ProSEAL Flexible Pouch consists of two pieces of film that are hinged at one end, along a short side. Separate the two pieces starting at the end opposite the hinge. Take care not to break the hinged seal.

1. Insert the article to be laminated in the pouch so there is at least a 1/8" (3.5mm) board around each of the sides. This ensures that moisture never reaches the image.
2. Place the pouch with the image on the sled included with the Flexible Pouches or ProSEAL Sled.

Note: The ProSEAL Sled is used to assist in the handling of large Flexible Pouches. It is made of materials that will not damage or cause excessive wear to your ProSEAL Laminator.

3. Smooth out any wrinkles with the side of your hand or a soft flexible squeegee.
4. Tape the leading edge of the pouch to the sled using masking tape.

5. Adjust the Control Knob to the 3/16" (5mm) setting for the ProSEAL Sled.
6. Make sure that the LED indicator is constantly ON indicating that the machine is up to temperature.
7. Slowly insert the sled with the Flexible Pouch on top into the inlet opening.
8. Ensure that the sled is centered and straight. A gentle push may be required to start the sled into the laminator.
9. Hold the edge of the sled until it is engaged, and the laminator begins pulling it on its own.
10. The sled should feed through the laminator and automatically exit at the rear of the laminator.

CAUTION! The Sled will be hot! Allow it to lie flat and cool before removing the tape.

If there is any dirt or adhesive on the surface of the board, it can be removed by dampening a lint free cloth with Isopropyl Alcohol (IPA) and wiping the surface.

CAUTION! Always use care when using Isopropyl Alcohol (IPA)! IPA is very flammable. The flash point of IPA is 11□(51.8□). The self-ignition temperature is 400□(752□).

CLEANING YOUR LAMINATOR

Cleaning the Outside of the Laminator:

CAUTION! Disconnect the laminator from the power supply before cleaning.

The laminator may be cleaned with a lint-free cloth, lightly dampened with a mild soap and water solution. Do not use a spray-on cleaner. Do not immerse any part of the laminator in water or other liquid.

Do not use an abrasive cleaner, which can damage the painted surfaces.

Do not allow water or liquids to enter the electrical circuits, which may cause personal injury and/or damage the equipment when power is applied.

Cleaning the Rollers

The laminating rollers of your ProSEAL should be periodically cleaned of adhesive build up that might occur during normal operation.

IMPORTANT! Clean the laminating rollers to prevent adhesive build-up and to ensure quality output. Adhesive build-up may eventually damage the rollers.

When laminating, a small amount of adhesive will squeeze out between the laminate films and onto the top and bottom rollers. This residue accumulates through normal use and can be easily cleaned off the rollers.

Using a Cleaning Board:

1. A new sheet of 3/16" foam board may be used to clean the rollers. Simply run the new board through the machine to remove any built up adhesive.
1. Turn on the unit. Once the machine has reached process temperature set the Control Knob to 3/16" (5mm).
2. Slowly insert the Cleaning Board into the inlet opening. Ensure that the board enters centered and straight. A gentle push may be required to start the board into the machine. Hold the edges of the board until it is engaged in the unit and the laminator begins pulling it on its own.
3. The board will feed through the laminator and automatically exit at the rear of the unit.

CAUTION! THE BOARD WILL BE HOT!
Allow the board to lie flat while cooling.

TROUBLE SHOOTING GUIDE

PROBLEM	CAUSE	SOLUTION
The LED Indicator does not light when the main power switch is turned on.	The power cord is not plugged into the wall outlet.	Plug cord into wall outlet.
	The main fuse is blown.	Replace fuse on rear of machine.
	The main circuit breaker is tripped.	Reset the main circuit breaker at the service panel.
Pouch Board is not drawn in by the machine. The motor is making a louder humming noise and/or it is stalling. Only after pushing very hard, the board is accepted.	The pouch board is too thick for the chosen nip setting.	Change the nip setting up to the next or correct thickness.
	Boards of another make are being used.	Use only ProSEAL Pouch Boards. Use of other boards will void your warranty.
The quality of the lamination is poor: silvery areas on dark surfaces are visible, or the edges of the image are not sealed well.	The roller temperature is too low.	Contract your Technical Service Representative.
	The roller pressure is too low.	Change the nip setting down to the next thickness.
The quality of the lamination is poor: especially laminated Inkjet prints show bubbles.	The roller temperature is too high.	Contact your Technical Service Representative.
Only one side of the Pouch Board or Flexible Pouch is coming out fully laminated.	The rollers are not even or parallel.	Contact your Technical Service Representative.

Technical Service

If the machine does not reach temperature or you do not get the results you desire, please contact your Technical Service Representative (see rear cover). When calling for Technical Service, please have Laminator Serial Number (listed on the ratings label) available. The ratings label is located on the rear side of the laminator.

Servicing and replacement parts

Service and maintenance must be performed fully in accordance with the instructions. Servicing by any unauthorized technician voids the warranty. A service technician must use replacement parts specified by SEAL Graphics.

NOTE! Service Technicians must perform safety checks after completing any service or repairs to the laminator.

SPARE PARTS LIST

<u>PART DESCRIPTION</u>	<u>SPARE PART NO.</u>
TOP-COVER	011LR3001A
BASE-FRONT	013LR3043A
BASE-REAR	013LR3044A
FRAME-REAR	013LR3045A
FRAME-L	013LR3046A
FRAME-R	013LR2054A
SENSOR-ASS'Y	313LR3001A
ROLLER-LAMI.UP	133LR3003A
ROLLER-LAMI.LO	133LR3003B
TABLE-FRONT	014LR3002A
COVER-R	021LR3015A
COVER-L	021LR3016A
KNOB-CONTROL	021LR2006A
FOOT	026004005A
INLAY-CONTROL	032LR3013A
PCB-MAIN ASS'Y	350LR3026A
PCB-CONTROL ASS'Y	350LR3025A
POWER CORD	380LR4001A

Please contact your distributor or sales person for replacement parts.

Technical Service:

There are no end user serviceable parts in a ProSEAL® Laminator! If the machine does not reach temperature or you do not get the results you desire, please call Technical Service (details on rear cover).

Your laminator is covered by a one-year Warranty as described in this manual.

GLOSSARY OF TERMS

Cleaning Board:

Board used to capture any adhesive that may be clinging to the rollers.

Cold Mode: Heat is off.

Cover Sheet:

Release paper to be placed on the surface of mounting boards.

Control Knob:

Adjusts the height of the rollers on the ProSEAL 44.

Flashing Temperature Light:

The machine has not reached temperature.

Film:

A synonym used for laminate. The material used in the laminating and encapsulating process.

Flexible Pouch:

Plastic Film Pouch for laminating paper.

Heat-Activated Films:

Films with an adhesive activated when heat is applied. Once applied to an image, the adhesive forms a strong bond between the laminate and the image.

Hot Mode: Heat is on.

Laminator:

A machine used to mount and laminate images.

LED: Light Emitting Diode (light).

Mounting Board:

An adhesive coated board used for mounting images.

Nip:

The spot where the top and bottom rollers meet.

Out-Feed:

The back of the laminator where completed images emerge.

Pouch Board:

An adhesive coated board with an over-laminate attached.

Pre-Coating:

The process of coating a substrate with an adhesive mounting film onto which an image can be mounted.

Pressure-Sensitive Films:

Films with an adhesive that is activated when pressure is applied, forming a bond between the protective laminate and the surface of the image. Used primarily for fast mounting applications and recommended for heat-sensitive thermal and photographic prints.

Release Liner:

The backing on a pressure-sensitive film or mounting adhesive used to keep the film from sticking to itself. After peeling the release liner off, the adhesive layer becomes exposed.

Roller Height:

The space between the rollers.

Sled:

A 3/16" (5mm) board used to place flexible pouches to aide the laminating process.

TECHNICAL SPECIFICATIONS

Mechanical	
Height	12" (300 mm)
Overall Width	53" (1350 mm)
Depth	20" (510 mm)
Net Weight	111 lbs.(50 kg)
Shipping Weight	122 lbs.(55 kg)
Process	
Maximum Working Width	44" (1120 mm)
Process Speed	1 ft/min (305 mm/min)
Roller Line Pressure	0.8 N/mm
Process Temperature	311-320°F (155-160°C)
Nip setting	0 (closed nip) 1/16" (1.5 mm) 1/18" (3 mm) 3/16" (5 mm) 1/4" (6 mm)
Electrical	
U.S. version	115 VAC 60Hz 12A
Order Codes	
U.S. version	60824

*** Specifications are subject to change without notice.

Each SEAL Brand laminator has a Serial Number label. This is located to the rear of the laminator. This label indicates the model type, the electrical rating, and the laminator serial number.

ProSEAL® 44 Pouch Board Laminator

LIMITED WARRANTY

SEAL Graphics warrants to the original consumer purchaser that each new SEAL Image Laminator which proves defective in materials or workmanship within the applicable warranty period will be repaired at our option or replaced without charge.

The applicable warranty period for the New ProSEAL Pouchboard Laminators shall be one year on parts and three months on rollers from date of purchase.

This warranty extends to and is enforceable by only the original consumer purchaser, and only for the period (during the applicable term), which the product remains in the possession of the original consumer purchaser. "Original consumer purchaser" means the person who first purchased the product covered by this warranty. It does not apply if it is found that at any time the equipment has not been used for its intended purpose.

Effective November 1, 2002, the applicable warranty period for Refurbished Equipment shall be ninety days (parts and labor, excluding rollers). Rollers are not covered under warranty. The applicable warranty period for Demo Equipment shall vary, not exceeding the maximum warranty period stated herein. All Demo Equipment comes with a specific warranty, which will be stated at the time of purchase. If warranty period is not detailed in writing, there is no remaining warranty.

Please ask your dealer, distributor, or sales representative for details.

Note: Used and Not Refurbished Equipment is sold on an "AS IS" basis with No Warranty.

For more information regarding this warranty, please contact your distributor.

WARNING! Any unauthorized changes or modifications to this unit without our prior written approval will void the user's warranty and will transfer health and safety obligations to the user.

WARNING! Changes or modifications to this unit not expressly approved by the party responsible for compliance could void the user's authority to operate the equipment.

All rights are reserved. No part of the document may be photocopied, reproduced, or translated to another language without the prior written consent of SEAL Graphics.

The information contained in this document is subject to change without notice and should not be construed as a commitment by SEAL Graphics.

SEAL Graphics assumes no responsibility for any errors that may appear in this document. Nor does it make expressed or implied warranty of any kind with regard to this material including, but not limited to, the implied warranties of merchantability and fitness for a particular purpose.

SEAL Graphics shall not be liable for incidental or consequential damages in connection with, or arising out of the furnishing, performance, or use of this document and the program material, which it describes.

Trademark Credits:

SEAL is a registered trademark of SEAL Graphics.

Image is a registered trademark of SEAL Graphics.

SEAL Graphics warrants to the original consumer.

Copyright SEAL Graphics 2006

NOTICE: Retain original machine packaging. Failure to return machine properly packed in original packaging will impose a fifteen percent restocking fee plus any costs to repair shipping damage. For service or return authorization call Seal Technical Service.

SEAL TECHNICAL SERVICE

(Technical assistance & service)

Tel: 1-800-486-6502

Fax: 1-800-966-4554

SEAL CUSTOMER SERVICE

(For information and placing orders)

Tel: 1-800-257-7325

Fax: 1-800-966-4554

Specification subject to change without notice

Seal Graphics Americas Corporation

7091 Troy Hill Drive

Elkridge, MD 21075

Tel: 410-379-5400

Fax: 410-579-8960

Seal Graphics Canada

1601 Matheson Blvd. E.

Unit # 4

Mississauga, Ontario L4W 1H9

Canada

Tel: 905-212-9232

Fax: 905-212-9313

©2005 Seal Graphics

Seal®, ProSEAL® and Image® are registered trademarks of Seal® Graphics

Part # INPS002 Rev 1 (12/05)

ProSEAL® 44 Pouch Board Laminator