

XX268-10-00

CE102D Network Indoor Camera Dome



Vicon Industries Inc.

**Tel: 631-952-2288 Fax: 631-951-2288 Toll Free: 800-645-9116
24-Hour Technical Support: 800-34-VICON (800-348-4266) UK: 44/(0) 1489-566300**

Vicon Industries Inc. does not warrant that the functions contained in this equipment will meet your requirements or that the operation will be entirely error free or perform precisely as described in the documentation. This system has not been designed to be used in life-critical situations and must not be used for this purpose.

www.vicon-security.com

1. Description

The information in this manual provides quick installation and setup procedures for the CE102D Series of Camera Domes. These units should only be installed by a qualified technician using approved materials in conformance with federal, state, and local codes. Read these instructions thoroughly before beginning an installation. Always refer to Vicon's website to assure you have the most up-to-date manual, www.vicon-security.com.

The CE102D-NIR HD IP Camera Dome is designed for indoor security installations. This cost-effective fixed network camera includes an integral 3.7 mm megapixel fixed lens; the 1080p resolution delivers crisp clear images. The CE202D-N cameras are fully compatible with all ViconNet® systems; its ONVIF certification provides an open-platform for integration into other video management systems.

The network camera provides triple-streaming video and supports H.264 compression technology. MPEG-4 and Motion JPEG (M-JPEG) compressions are also provided. Installation is made easy and cost-effective with Power-over-Ethernet (PoE); the camera also accepts 12 VDC. The CE102D automatically adapts to changing outdoor lighting; the true day/night camera includes a removable IR cut filter. Built-in IR LEDs provide illumination up to 65 ft (20 m).

- **Installation Steps**

Follow these steps to install the network camera on your local network (LAN):

1. Check the package contents against the list below.
2. Connect the network camera
3. Set an IP address.
4. Set the password.

- **Package Component**

The system comes with the following components:



Note: Adapter for 12 VDC is not supplied.

Check your package to make sure that you received the complete system, including all components shown above.

- **Contents in the installation CD**

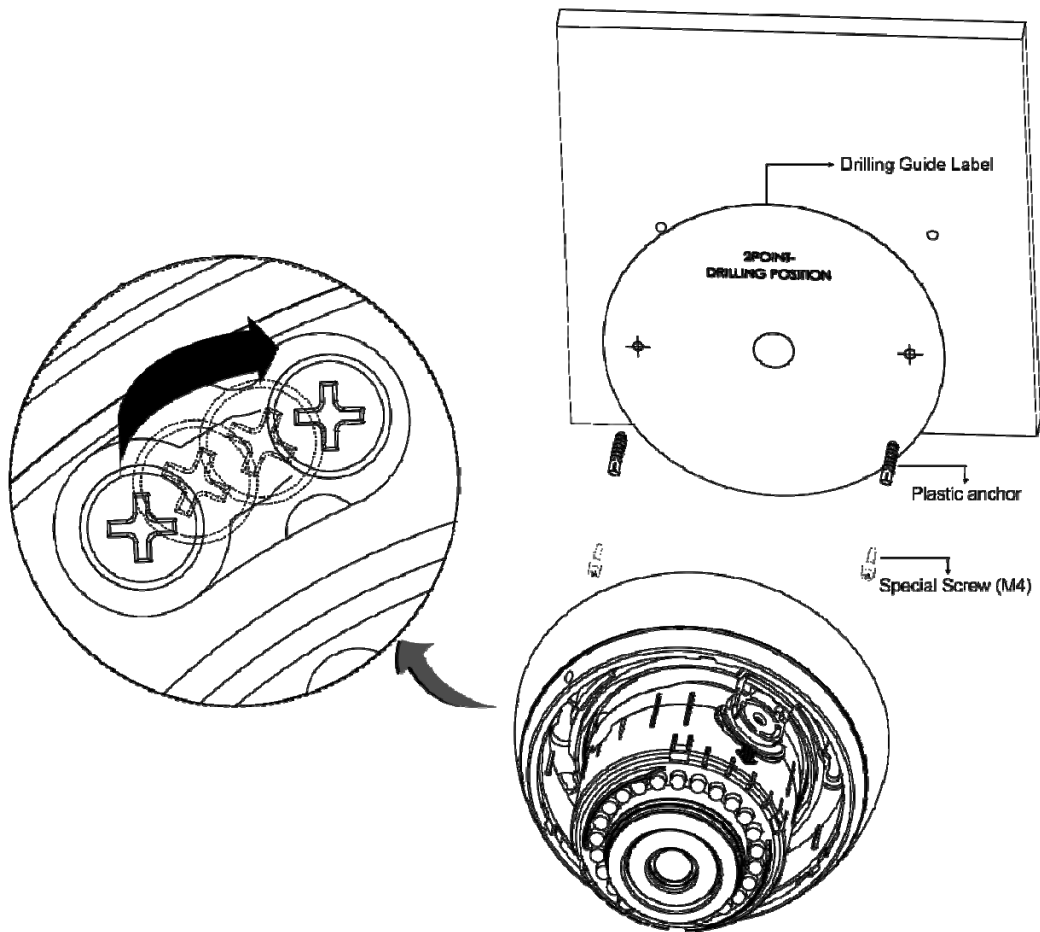
1. The CE102D-NIR User's Manual
2. The SmartManager User's Manual
3. The SmartManager Installation software

2. Installation

2.1 Camera Installation

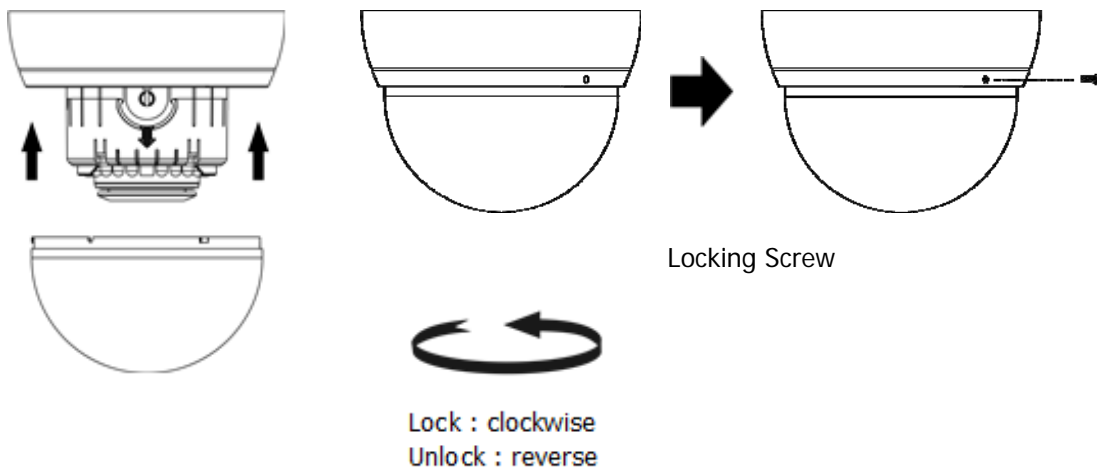
Carefully remove the contents from the box and verify that nothing was damaged in shipment.

- 1) Using the template sheet provided, make screw holes for camera on the ceiling.
- 2) Disassemble the camera by gently turning the camera cover counter-clockwise to remove it.
- 3) Secure the dome camera to the ceiling using the anchors (2x) and screws (2x) provided in the accessory kit.



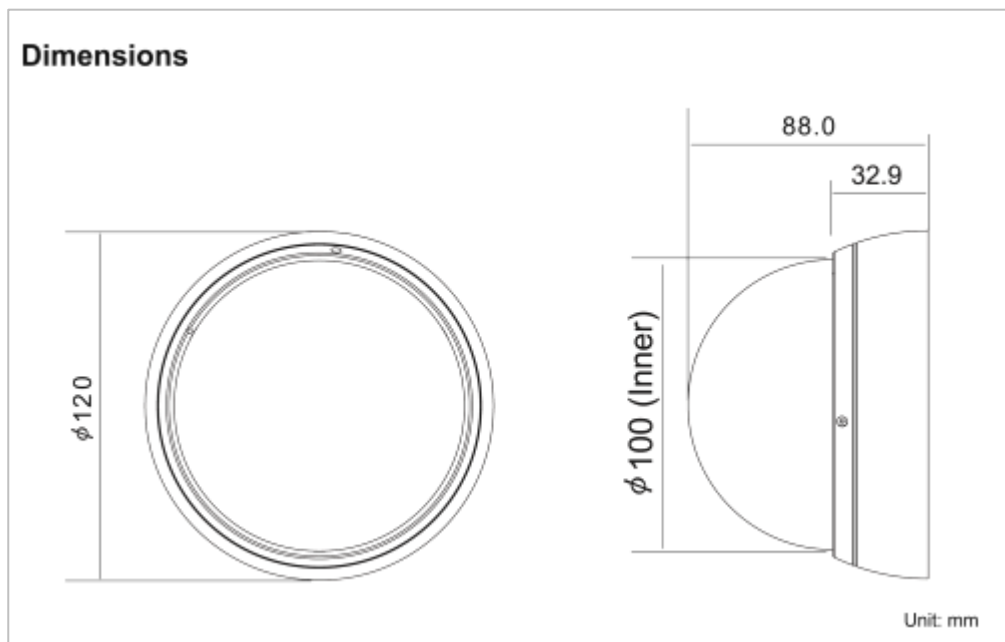
- 4) Reassemble the dome cover to the camera assembly by aligning the notches. Turn Camera Cover clockwise to complete installation. Secure the dome cover by using the locking screw provided in the Accessory Kit.

Quick Installation Guide

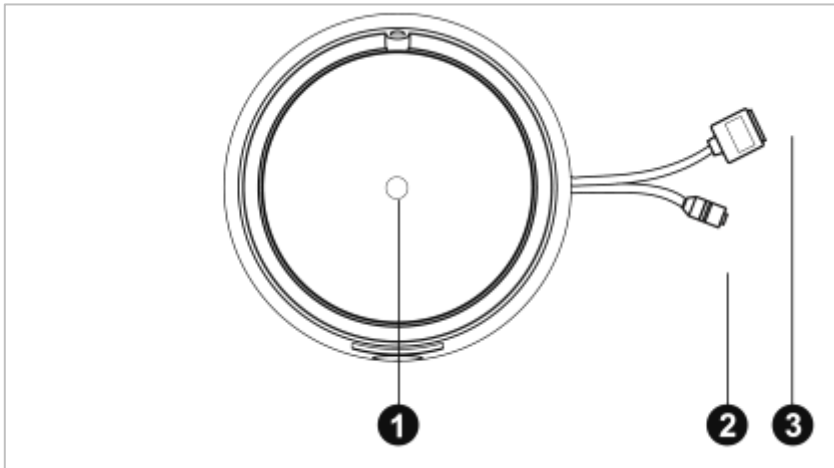


- **Camera Dimension**

See the diagrams below for the exact dimension



- **Connection Cable**



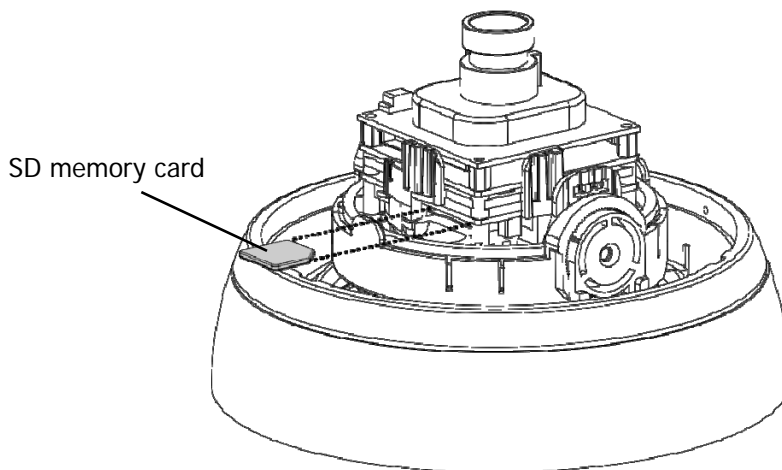
NO	Name	Description
1	Lens	Allows wide area to be monitored
2	Power Cable	Cable for Power source (12 VDC)
3	Ethernet Cable	Cable for Ethernet (POE)

- **Connecting to the RJ-45**

Connect a standard RJ-45 cable to the network port of the network camera. Generally a cross-over cable is used for directly connection to PC, while a direct cable is used for connection to a hub or switch.

- **Micro SD memory slot**

Insert the SD memory card (customer supplied).



- **Connecting the Power**

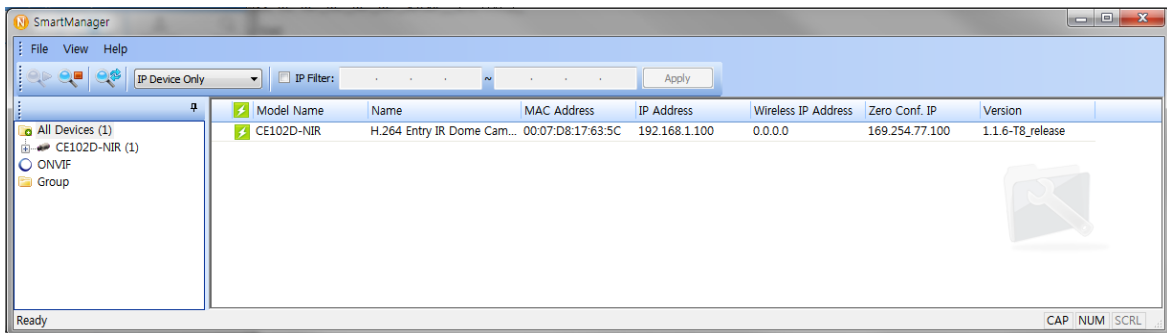
Connect a 12 VDC power adaptor (customer supplied) to the camera. (This connection is not used if using PoE power.)

2.2 Network Connection and IP assignment

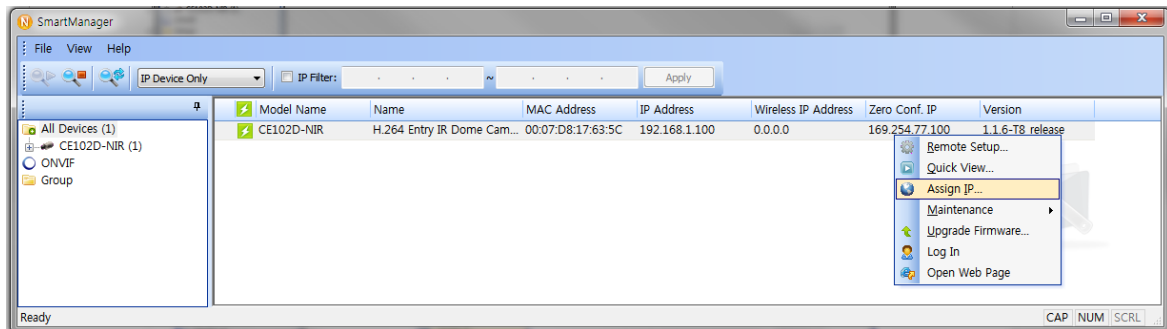
The network camera is designed for use on an Ethernet network and requires an IP address for access. Most networks today have a DHCP server that automatically assigns IP addresses to connected devices. By the factory default, your camera is set to obtain the IP address automatically via DHCP server. If your network does not have a DHCP server the network camera will use 192.168.1.100 as the default IP address.

If DHCP is enabled and the product cannot be accessed, run the “Smart Manager” utility on the CD to search and allocate an IP address to your products, or reset the product to the factory default settings and then perform the installation again.

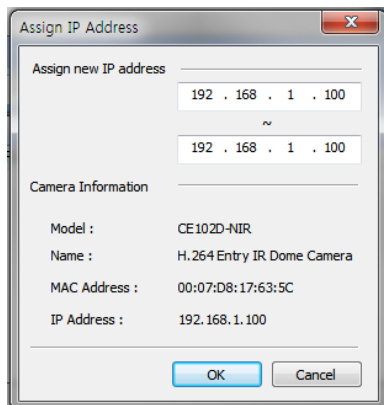
1. Connect the Network Camera / device to the network and power up.
2. Start SmartManager utility (Start>All programs>SmartManager>SmartManager), the main window will be displayed, after a short while any network devices connected to the network will be displayed in the list.



3. Select the camera on the list and click right button of the mouse. The pop-up menu below displays.



4. Select Assign IP. The Assign IP window displays. Enter the required IP address.



Note: For more information, refer to the Smart Manger User’s Manual.

3. Operation

The network camera can be used with Windows® operating system and browsers. The recommended browsers are Internet Explorer®, Safari®, Firefox®, Opera® and Google® Chrome® with Windows.

Note: To view streaming video in Microsoft® Internet Explorer, set your browser to allow ActiveX controls.

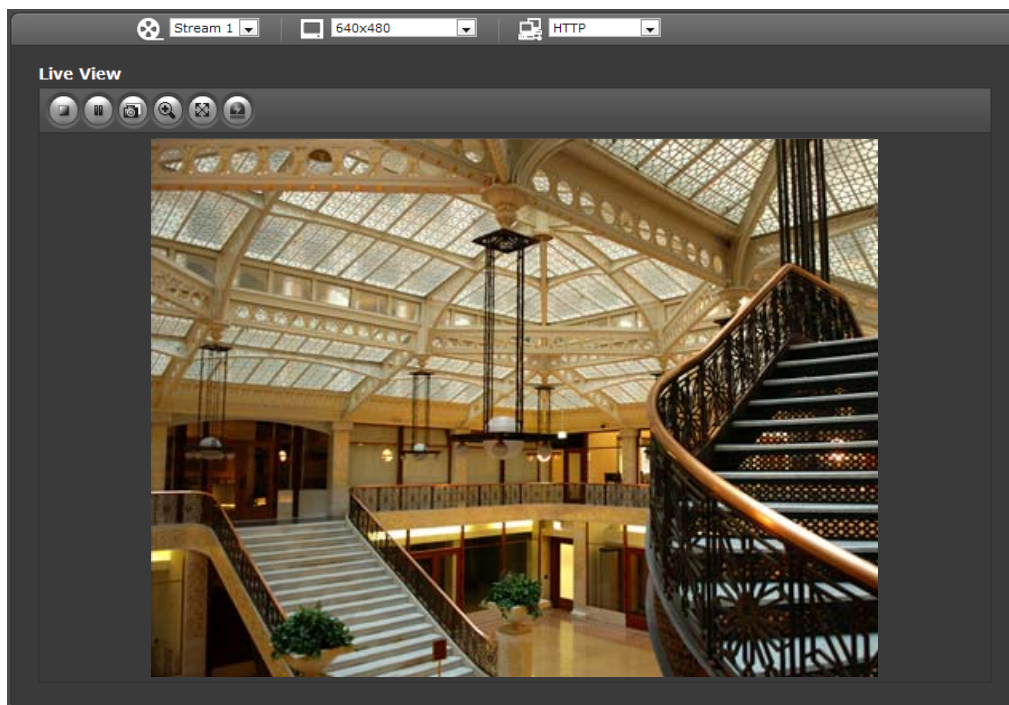
Note: Some screens may appear different (i.e., color scheme) depending on the firmware version, but the functionality is the same or similar.

3.1 Access from a browser

1. Start a browser. (i.e., Internet Explorer).
2. Enter the IP address or host name of the Network Camera in the Location/Address field of your browser.
3. You can see a starting page. Click Live View or Setup to enter web page.



4. Click Live View for the network camera's **Live View** page to appear in the browser.



3.2. Access from the internet

Once connected, the network camera is accessible on your local network (LAN). To access the network camera from the Internet you must configure your broadband router to allow incoming data traffic to the network camera. To do this, enable the NAT-traversal feature, which will attempt to automatically configure the router to allow access to the network camera. This is enabled from Setup > System > Network > NAT.

For more information, refer to “3.5.5 System>Network>NAT” of User’s Manual.

3.3 Setting the admin password over a secure connection

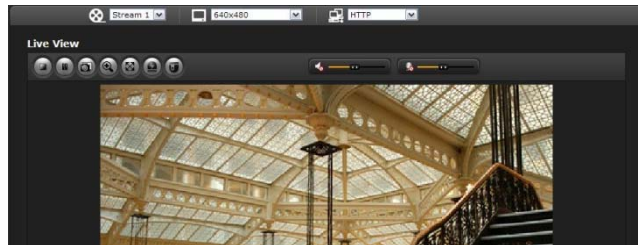
To gain access to the product, the password for the default administrator user must be set. This is done in the “Admin Password” dialog, which is displayed when the network camera is accessed for the setup at the first time. Enter your admin name and password, set by the administrator.

Note: The default administrator username is “ADMIN” and password is “1234”. If the password is lost, the network camera must be reset to the factory default settings. See section “3.6 Resetting to the Factory Default Settings” for more details.

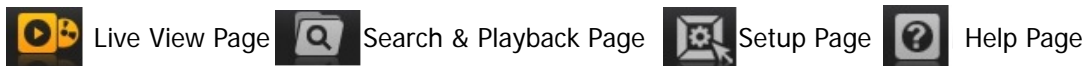


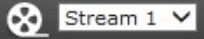
3.4 Live View Page

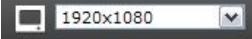
The live view page comes in several screen modes for example: 1920x1080, 1280x1024, 1280x720, 800x600, 704x480 (576), 640x480, 352x240 (288) and 320x240. Select the most suitable mode in accordance with your PC specifications and monitoring purposes.



1) General controls



 The video drop-down list allows you to select a customized or pre-programmed video stream on the live view page. Stream profiles are configured under Setup > Basic Configuration > Video & Image. For more information, see section “3.5.1 Basic Configuration > Video & Image” of User’s Manual.

 The resolution drop-down list allows the selection of the most suitable video resolution to be displayed on Live View page.



The protocol drop-down list allows the selection of the combination of protocols and methods to use depending on your viewing requirements and on the properties of your network.

2) Control toolbar

The live viewer toolbar is available in the web browser page only. It displays the following buttons:



The Stop button stops the video stream being played. Pressing the key again toggles the start and stop. The Start button connects to the network camera or start playing a video stream.



The Pause button temporarily stops (pauses) the video stream being played.



The Snapshot button takes a picture (snapshot) of the current image. The location where the image is saved can be specified.



The digital zoom activates a zoom-in or zoom-out function for video image on the live screen.



The Full Screen button causes the video image to fill the entire screen area. No other windows will be visible. Press the 'Esc' button on the computer keyboard to cancel full screen view.



The Manual Trigger button activates a pop-up window to manually start or stop the event.


3) Video Streams

The network camera provides several images and video stream formats. Your requirements and the properties of your network will determine the type you use.

The Live View page in the network camera provides access to H.264, MPEG-4 and Motion JPEG video streams, and to the list of available video streams. Other applications and clients can also access these video streams/images directly, without going via the Live View page.

3.5 Network Camera Setup

This section describes how to configure the network camera, and is intended for product Administrators, who have unrestricted access to all the Setup tools; and Operators, who have access to the settings for Basic, Live View, Video & Image, Event, and System Configuration.

You can configure the network camera by clicking Setup in the top right-hand corner of the Live View page. Click on  to access the online help that explains the setup tools

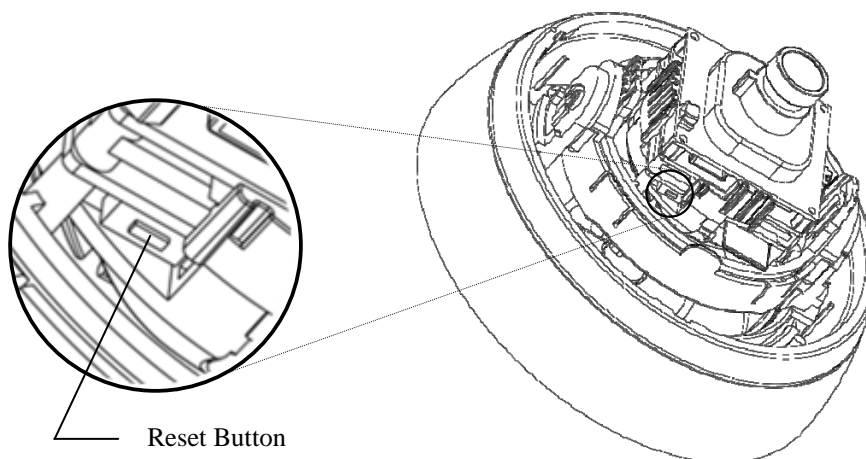
When accessing the network camera for the first time, the "Admin Password" dialog appears. Enter your admin name and password, set by the administrator.

Note: If the password is lost, the network camera must be reset to the factory default settings. See "3.6 Resetting to the Factory Default Settings".



3.6 Resetting to the factory default settings

To reset the network camera to the original factory settings, go to the Setup>System> Maintenance web page (described in “3.5.5 System > Maintenance”) or use the Reset button on the network camera, as described below.



- **Using the Reset Button**

Follow the instructions below to reset the network camera to the factory default settings using the Reset button.

1. Power off the network camera by disconnecting the power adapter.
2. Remove lower dome if not already done so.
3. Press and hold the Reset button while reconnecting the power.
4. Keep the Reset button pressed for at least 2 seconds.
5. Release the Reset button.
6. The network camera resets to factory defaults and restarts after completing the factory reset.
7. Reattach the dome.

Caution: When performing a Factory Reset, you will lose any settings you have saved.

3.7 More Information

For more information, refer to the network camera User's Manual, which is available on the CD included in this package.

Vicon Industries Inc.

Internet Address: www.vicon-security.com



CE102D Network Indoor Camera Dome

50303747A