



TECH NOTE

VICON TECHNICAL SERVICES GROUP

Subject: Audio Setup
Product: Kollektor 7000V
Number: 1400-0001-48-00
Date: 3/4/03

KOLLECTOR 7000V MICROPHONE AND SPEAKER SETUP

The Kollektor 7000v audio recording was tested with the following product / part numbers.

Microphone:

Vicon model V8900-MIC 600 Ohm unbalanced
P/N 682600

The microphone is a Louroe Electronics Electret and is externally powered.

Speaker:

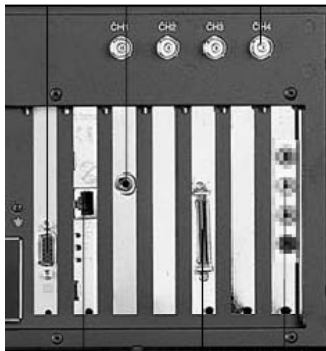
V8900-SPK
P/N 673600

Speakers are the Creative Labs Sound Blaster SBS10 unpowered.

Connection and operation

Connect the microphone and speaker before powering the Kollektor.

Microphone 1 is the bottom RCA connector on the audio input jack panel.



Back panel showing camera ch1-4

Audio RCA input jacks 1-4

Kollektor 7000v Audio Input Specification:

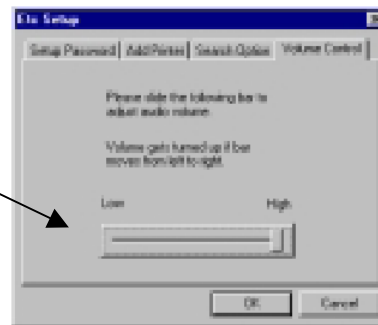
Signal Level: Line Level
Audio Connector: 4ch RCA female (Note: bottom one is Ch1)
Input impedance : 35 Kohm
Full scale input: 2 Vpp

Connect the speakers to the speaker output mini phone jack on the back of the Kollektor
The speaker output symbol has an icon with a small arrow pointing out from the jack.
(not pictured)

Playback

Audio playback is activated in the Viewer when the audio speaker icon button is selected. Image and audio playback is available only on 1-channel mode.. Speed slide bar is not activated when video and audio are played back at the same time. To adjust the playback speed using the slide bar, turn off audio by deselecting the speaker icon. Adjust the audio volume at Volume Control tab.

To adjust the audio volume, move slide bar



** Note; Video may skip to compensate for system overload when both video and audio are played back at the same time. To avoid video skip, turn off audio.*