

Introducing ViconNet 8

ViconNet 8 offers improved performance, enhancements to the user interface and other several new features. ViconNet 8 fully integrates with Vicon's HDEExpress NVRs and Express DVRs as well as the VAX access control system.

ViconNet 8 has been designed to fit all your security needs by increasing usability and strengthening the level of integration with all open-standard devices.



What's New with ViconNet 8.0?

- Integration with Vicon HDEExpress NVRs and DVRs
- Support Vicon access control system (VAX)
- Updated connection monitoring and notification
- Direct access to Edge Playback
- Simplify archive export tool
- Support group sorting for easier programming
- Allow ViconNet UI to auto adjust to screen
- Added popular screen layouts for VMDC
- Archive player update



Integration with Vicon Express Devices

Vicon and other vendor open standard camera settings
Site Name: GUY-WIN8 IP Address: 10.10.20.234

Search

Camera Name	Camera Vendor	Camera Format	Camera IP/DNS
V1772N-T0 10.10.20.228	Onvif	H.264	10.10.20.228
V923D-N39-IP-P 10.10.20.208	Onvif	H.264	10.10.20.208
SN663V 10.10.20.138	Vicon	H.264	10.10.20.138
IQM65-Guy	Vicon	H.264	10.10.20.249

Search Vicon Cameras
Add Vicon Device
Add Vicon Express Device
Add Other Vendor Camera
Edit Camera
Delete Camera
Close

List of Vicon open standard cameras

Camera Details

Camera:

Vendor: **HD_EXPRESS**

Format: H.264

Port Number: 80

User Name:

Password:

Primary recording site (optional): None

Note: It is recommended that user will be of type administrator.

Enable Edge playback

Test playback address

Save Undo

Available Cameras On Net:
IQM55N 10.10.20.55

Access Camera Setup
Site Authorization

- Vicon Express family of products now includes
 - HDExpress NVRs
 - Express encoder / DVR
 - New, simple and highly competitive line of products added to the Vicon line
- Version 8 will allow adding and using these devices like any other device for live view
- Vicon Express offers a unique playback interface with built in timeline and search

Recording in ViconNet

- As the Express products are not ViconNet based, they operate similar to the open standard cameras and can be recorded directly on ViconNet NVRs
 - Video will stream to the ViconNet NVR which will provide the same functionality as any other open standard camera
 - This uses the Express DVR as an encoder
 - No local recording is done at the edge



Recording in the Video Management System (VMS)

- When using either Express device, ViconNet recognizes and can record them using recording management or macro
- When this is done, they are used exactly like other encoders have been used and all the storage is on ViconNet's NVR



Record on the Edge - NVR & DVR

The Express devices can record locally to their internal hard drives

- Video is stored on local drives
- ViconNet can start playback from the edge device which will open the device playback and search video
- This method allows playback from one device at a time
- This uses the Express NVR and DVR as edge recorders

Dual record – NVR and the Edge

- You can record on the edge AND on ViconNet simultaneously

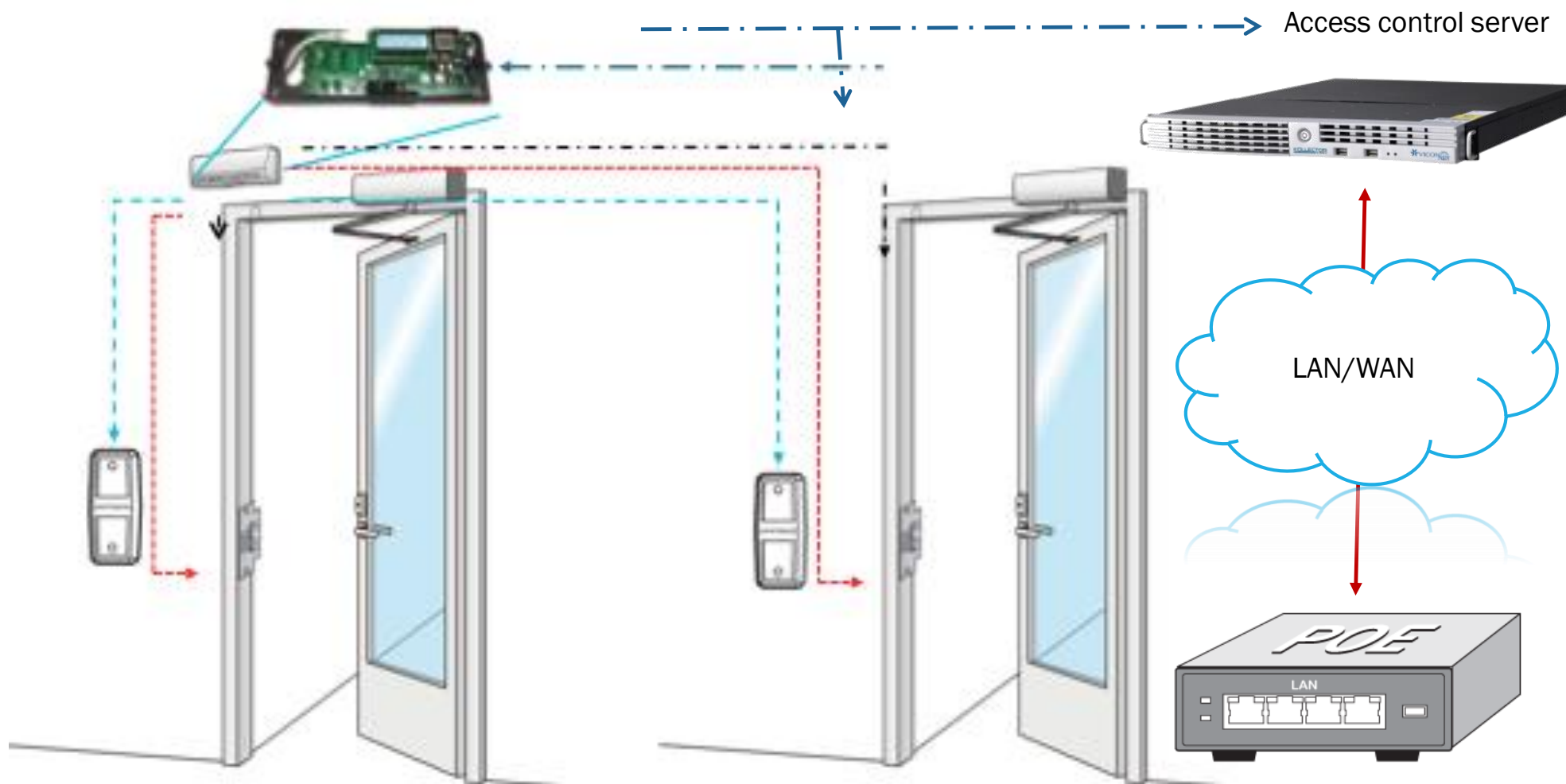


Support Vicon Access Control

- Updated the web server in ViconNet to provide support for the new Vicon Access Control Module
- Allows the access control system to map any camera and record and view them live / playback or upon event including PTZ control

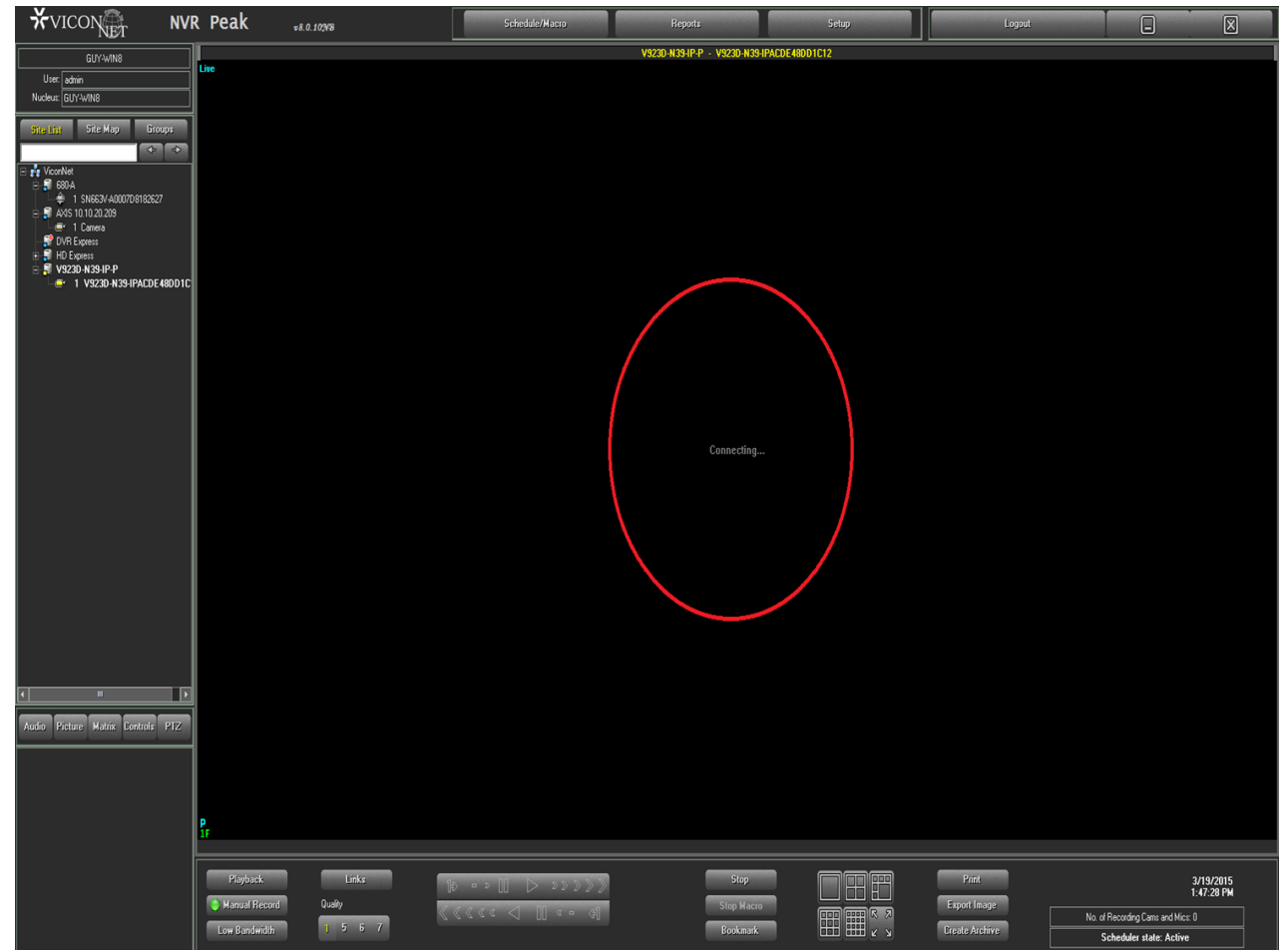


Access Control



Connection Monitoring

- Added indication on video tile when ViconNet is starting a video stream. This provides a clear indication of status to the user
- If a video stream is disconnected for any reason, the “connecting” indication will signal that the application is attempting to reconnect
- Notifications to users (CFN) and integrations (SDK) are enhanced to better notify all cameras status (offline / online)



Playback from the Edge

- With the support of the Express devices, ViconNet can now have direct access to edge recordings
- Any open standard camera that supports edge recording and playback now can be set as such and have its web player used for edge playback

Adding edge playback

The screenshot displays the 'Vicon and other vendor open standard camera settings' interface. At the top, it shows the site name 'GUY-WIN8' and IP address '10.10.20.234'. A table lists several cameras, with 'V923D-N39-IP-P' selected. Below the table, the 'Camera Details' section is visible, showing fields for Camera Name, Vendor, Format, Port Number, User Name, and Password. The 'Enable Edge playback' checkbox is checked, and the 'Test playback address' field contains 'http://10.10.20.228/playback/playback.php'. A red circle highlights this section.

Camera Name	Camera Vendor	Camera Format	Camera IP/DNS
HD Express	HD_EXPRESS	H.264	10.10.13.77
DVR Express	HD_EXPRESS	H.264	10.10.13.78
V923D-N39-IP-P	Vicon	Motion JPEG	10.10.20.228
AXIS 10.10.20.209	AXIS	H.264	10.10.20.209
680-A	Vicon	Motion JPEG	10.10.13.41

Camera Details

Camera: V923D-N39-IP-P Vendor: Vicon Format: Motion JPEG Port Number: 80

User Name: ADMIN Password: *****

Note: It is recommended that user will be of type administrator.

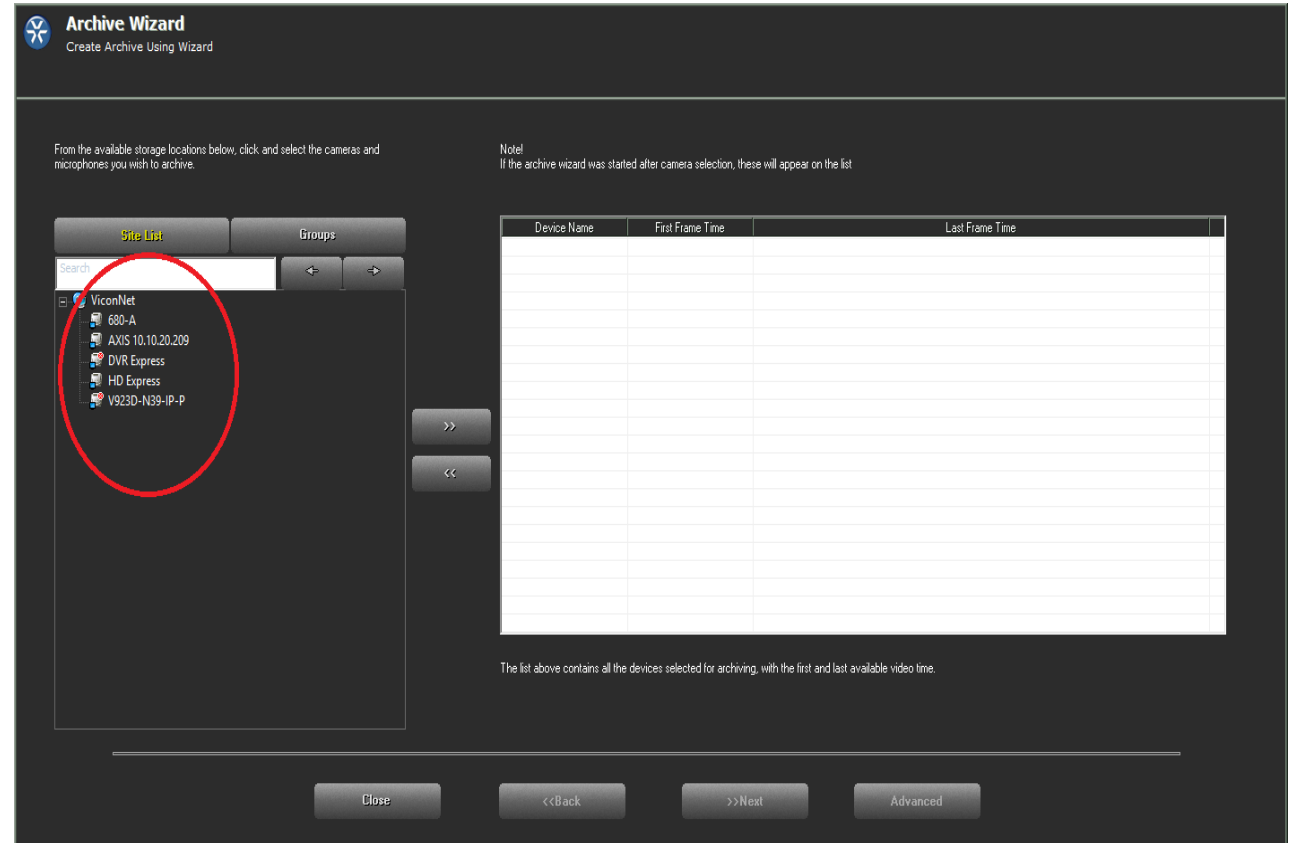
Enable Edge playback

Test playback address: http://10.10.20.228/playback/playback.php

Buttons: Save, Undo, Access Camera Setup, Site Authorization

Archive Wizard

- The archive wizard is now an intuitive feature that helps users start an archive directly by selecting the relevant cameras, eliminating the need to point to a specific database
- The archive wizard reduces steps in the process of exporting video by automatically searching all available databases for relevant video and archives from the best match



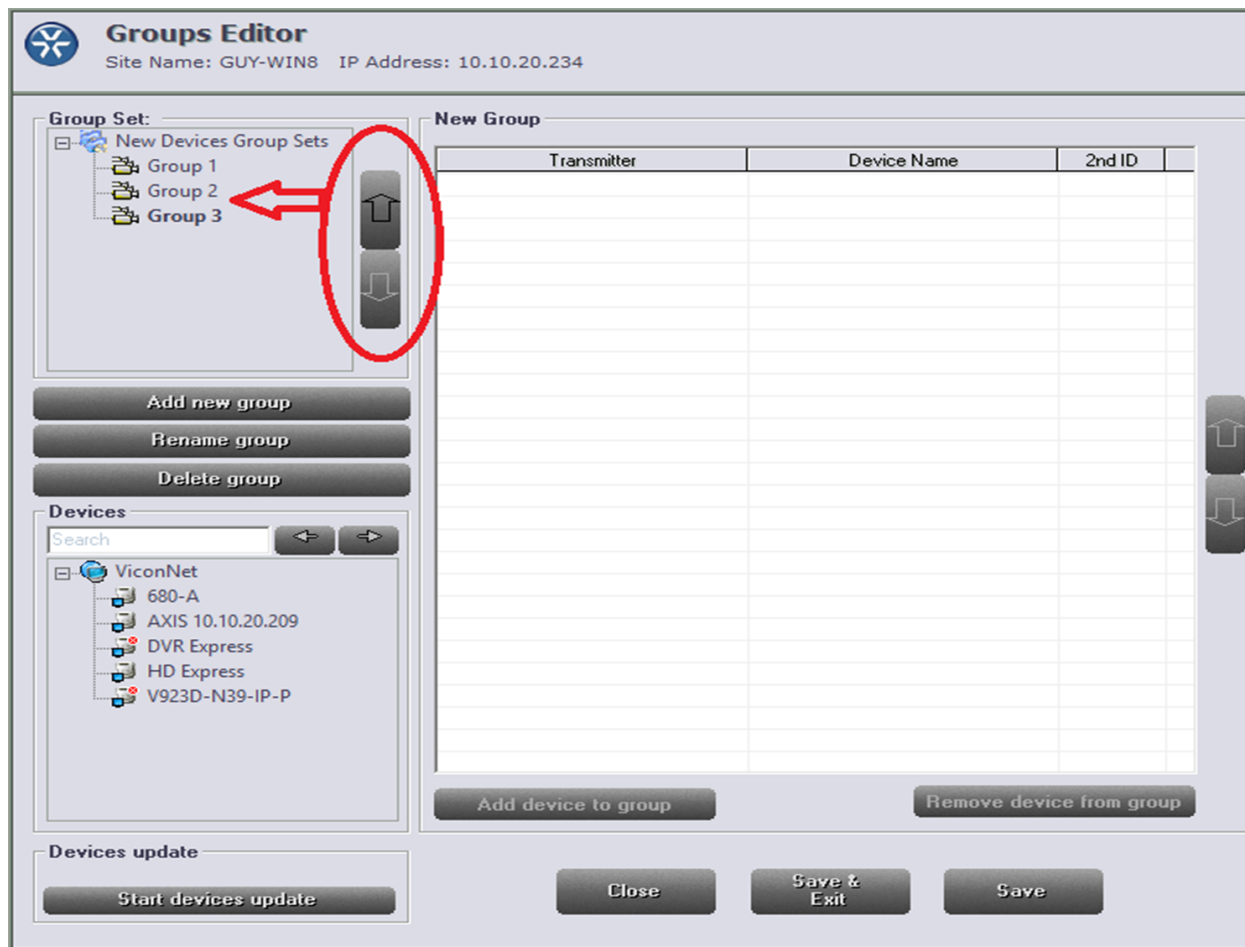
ViconNet UI Auto Sizing

- The ViconNet application window will have an option to automatically resize to the screen resolution
- For users moving the application between monitors or users undocking a laptop
- This solution makes it fast and easy



Supported Camera Group Sorting

- In ViconNet camera groups editor added the ability to move current groups up and down the list
- This allows sorting the group list when adding new camera groups



Added VMDC Layouts



- To better support popular layouts on large monitors, two additional layouts are added to the VMDC:

- 6 way layout – offering one larger image
- 10 way layout – offering two larger images

Installation & Licensing

- The installation of ViconNet 8 on former ViconNet versions requires re-licensing of the software
- Systems covered by Vicon's software enhancement program will receive the license for free
- Users who wish to update their existing systems (Kollektors, NVRs and Workstations) may download the new installation from the Vicon website or order a CD/DVD/USB through the sales channel



Availability

- Vicon has begun to convert all shipments of ViconNet, in software or pre-configured hardware, to Version 8 unless an earlier version is specified
- For add-ons to existing ViconNet systems, we recommend that at least the system's Nucleus be upgraded to Version 8. Earlier versions of ViconNet are available but must be specified when ordering





VICON

www.vicon-security.com