

Vicon Industries Inc.

Sales Alert: Pilot Select V1566 Digital Control and Matrix Switching System

Vicon's New Pilot Select™ V1566 System Replaces Nova V1466A System with More Capacity at a Lower Cost

INSIDE THIS ISSUE:

V1566 **Page 1**The
Configurator **Page 5**Product
Information
and Pricing **Page 7**

Vicon's new Pilot Select V1566 is being introduced this spring to replace the Nova 1466A Digital Control and Matrix System. The Pilot Select has been totally redesigned to provide increased capacity, a more rugged construction for the cage and circuit cards and a Microsoft® Windows® based Configurator that simplifies programming and provides the ability to create custom profiles for the V1566, offline, on a PC or laptop.

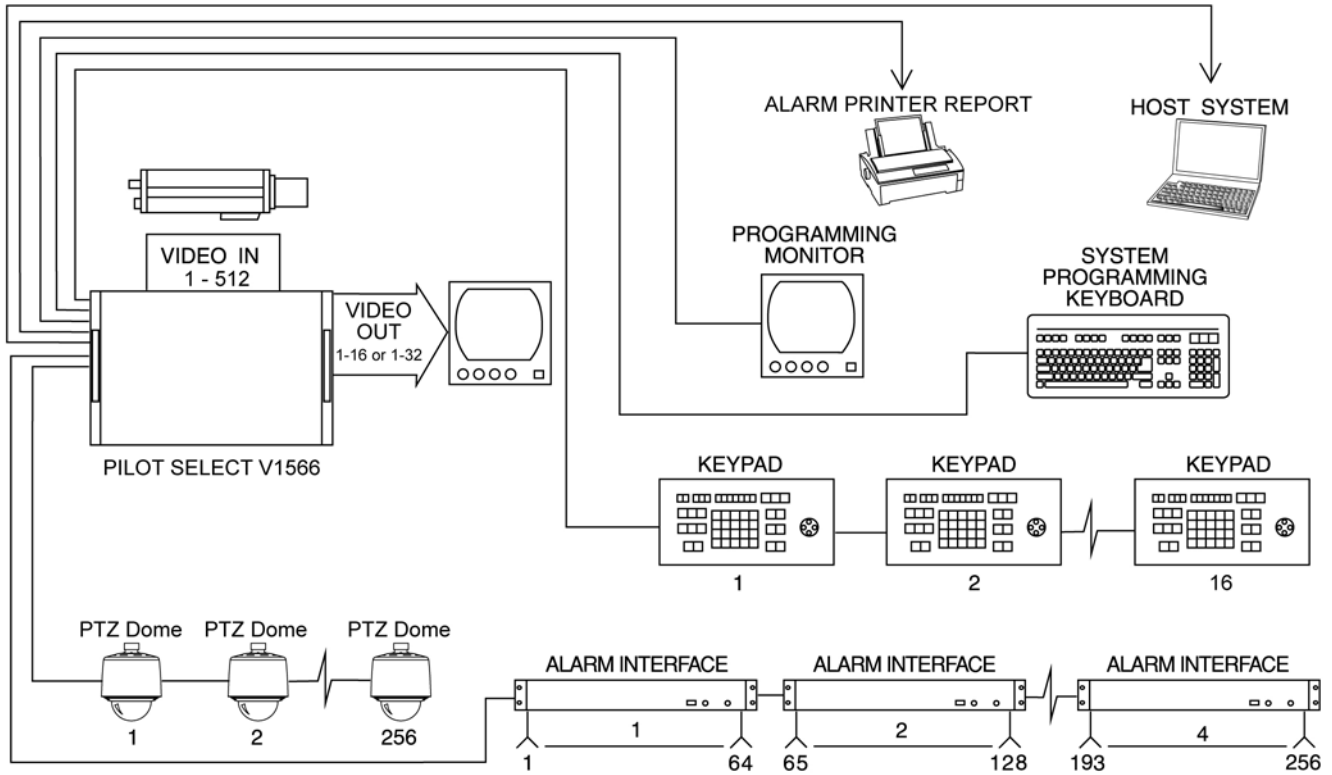
More Value

By leveraging the latest in component technology, the Pilot Select doubles the capacity of the NOVA 1466A while maintaining the same overall footprint. With the Pilot Select, you can now manage systems up to 512 cameras by 64 monitors. Previously this was only possible with an external CPU, which increased system cost and required additional space.

More System Capability

The Pilot Select can support up to 512 cameras and 64 monitors using 4 card cages. The system is expandable from a single cage to four cages as listed in the table below.

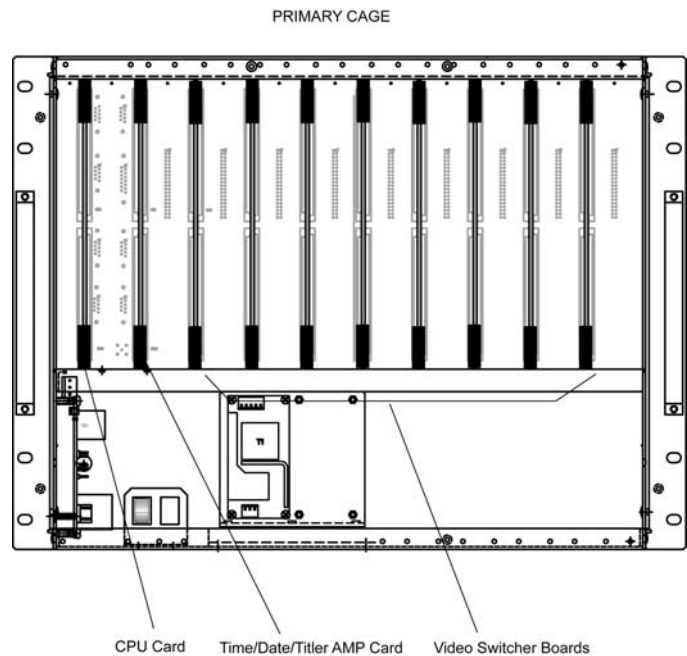
Number of Cages	Capacity Cameras x Monitors
Single-cage	Up to 256 x 32 maximum
Two-cage	Up to 512 x 32 maximum
Four-cage	Up to 512 x 64 maximum



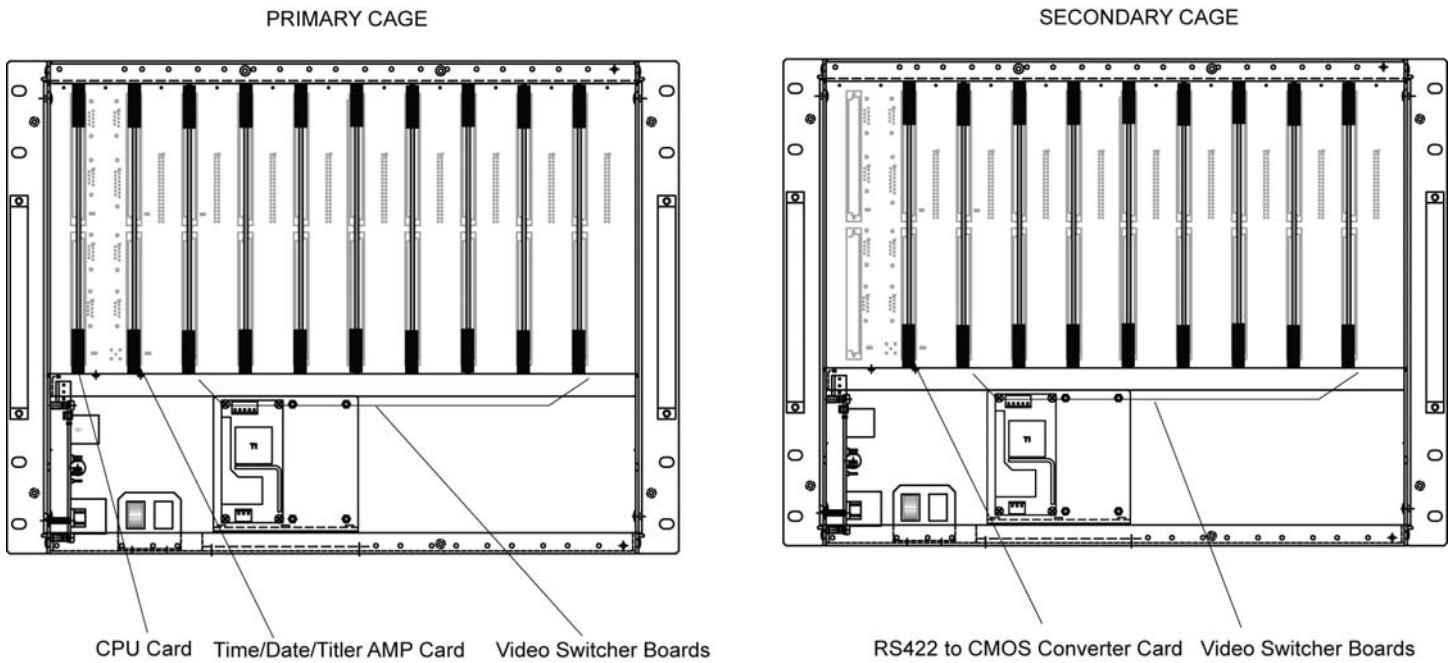
Typical System Setup

More Rugged Construction

The card cage has been completely redesigned with separate compartments for the power supply section and the circuit cards. The circuit cards have a smaller footprint and have been designed for easy insertion and removal. A Primary Cage is shown here. The power supply section is located under the circuit card slots. For a single-cage system, the primary cage will contain a CPU card, Time/Date/Title AMP card and Video Switcher Boards.

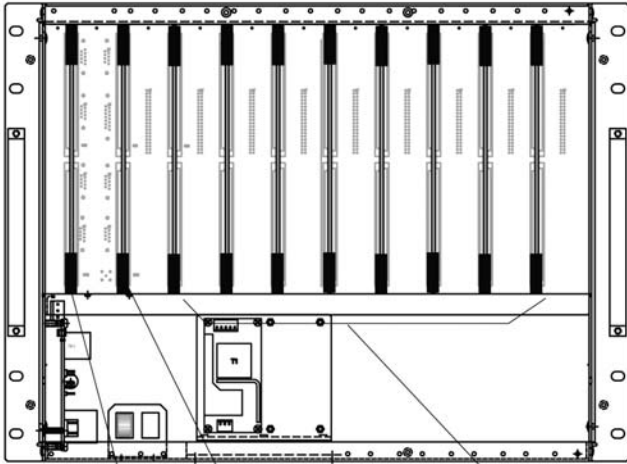


The two-cage system consists of a primary cage and secondary cage. The primary cage is configured the same as the single-cage system. The secondary cage contains the RS422 to CMOS Converter card and additional Video Switcher boards.



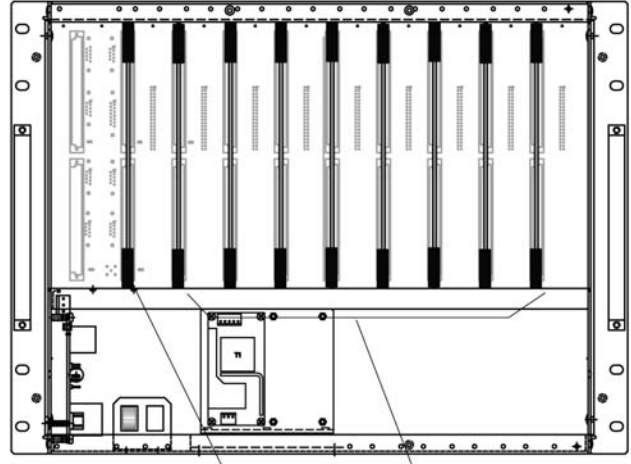
The four-cage system (Page 4) consists of two layers that have primary and secondary card cages. The first layer is configured the same as the two-cage system. The second layer primary cage has the Interface board mounted in the CPU slot. All other components in the primary and secondary cages are the same as the first layer.

PRIMARY CAGE



CPU Card Time/Date/Title AMP Card Video Switcher Boards

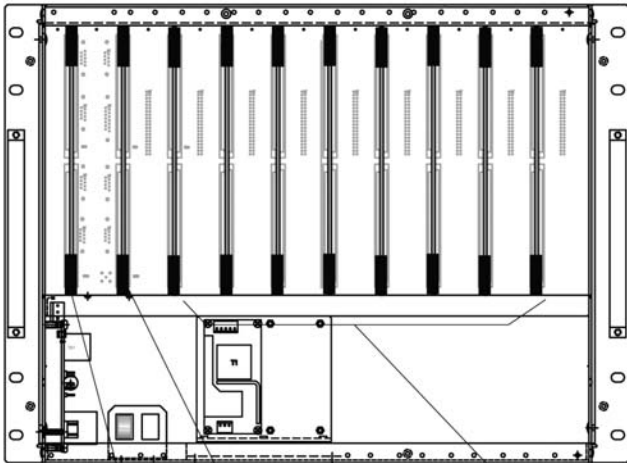
SECONDARY CAGE



RS422 to CMOS Converter Card Video Switcher Boards

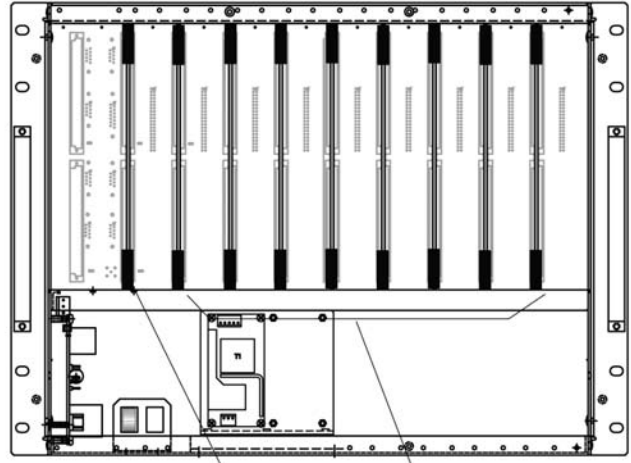
FIRST LAYER

PRIMARY CAGE



Interface Board Time/Date/Title AMP Card Video Switcher Boards

SECONDARY CAGE



RS422 to CMOS Converter Card Video Switcher Boards

SECOND LAYER

Four-Cage System

More Programming Choices

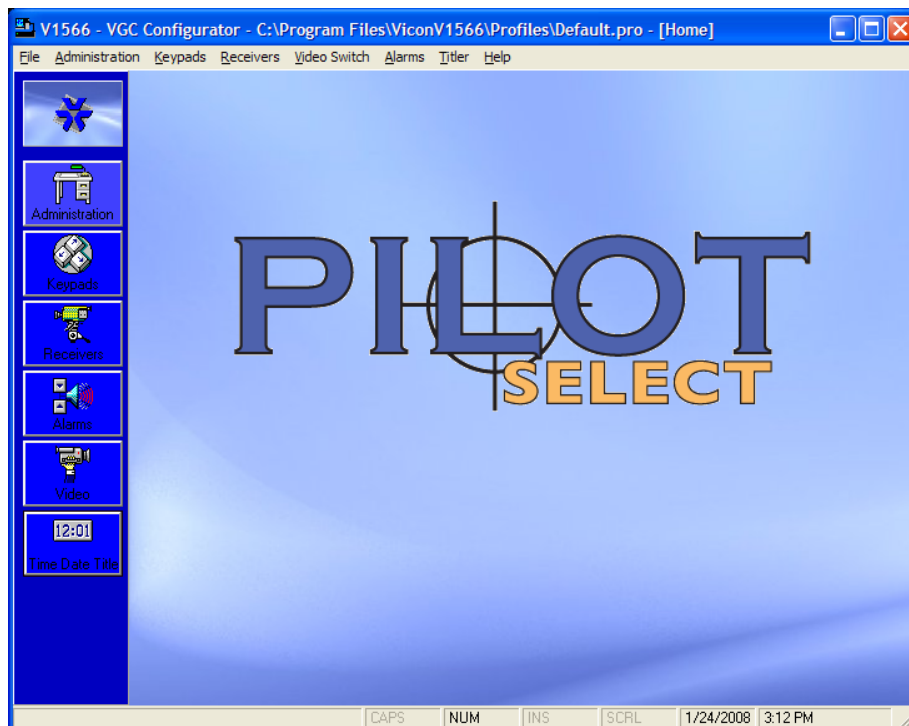
The V1566 provides powerful programming options that allow you to customize the system for your installation and configure it so that the operator interface is both intuitive and accessible to the user. This custom configuration is called a profile, and multiple profiles may be created to suit your needs. Listed below are just some of the functions that can be programmed into a profile.

- Partitioning - listing cameras accessible to specific monitors; listing monitors accessible to specific keypads
- Create timed or triggered events such as: Tours, Salvos, Presets and Alarms
- Control PTZ actions
- Prioritize operator keypads
- Set unique alarm actions
- Designate up to 2 monitors for high-speed video switching
- Create unique descriptions for the cameras with time and date displayed
- Create custom profiles offline using the Configurator program and upload the profile to single or multiple systems

The Configurator

A Windows-based Configurator program is provided with the Pilot Select. The Configurator allows you to create a custom profile or profiles for your system or systems offline, and then upload the profile to your system or systems via the host computer PC-HOST-1 port. All of the programming choices that have been described previously can be saved as a unique profile and uploaded to the V1566. This enables you to create one master profile and upload it to multiple systems at your site or to create multiple profiles for different situations that may change seasonally or for special events.

For example, a correctional facility may have several V1566 systems operating in different areas. Rather than program each system individually using the Pilot Select's built-in menu driven system, an administrator can create one master profile on a PC and then upload that profile to each V1566 system using a laptop. Individual customization, if required, can then be done at each system, or the administrator can use the master profile as a starting point and quickly create different versions of the master with the required changes for each system.



More Everything

System Capabilities

- Number of keypads - 16
- Number of PTZ receivers - 256
- Host computer ports - 1
- Number of X-IA alarms - 256
- Number of receiver alarms - 256
- Number of tours* - 128
- Steps per tour - 32
- Number of salvos - 64
- Monitors per salvo - 16
- Number of timed events - 64

* Tours may be chained together.

Setting up keypads is easy and quick with the Configurator.

Easily identify cameras and their locations.

Assign cameras to monitors.

The Complete Pilot Line is Coming Soon

The Pilot Select is one of four new matrix switching systems that Vicon will be introducing in 2008. Listed below are the other Pilot systems.

Pilot Lite V1522	Replaces NOVA V1422 System	32 Cameras x 8 Monitors
Pilot Plus V1544	Replaces NOVA V1344 System	128 Cameras x 8 Monitors
Pilot Ultra V1599	Replaces NOVA V1500 System	Over 8000 Cameras x 512 Monitors

Product information and Pricing for the Pilot Select is provided on Pages 7 and 8. Please note that pricing will be provided at a later time.

Product Information and Pricing – Pilot Select Components

Model Number	Product Code	Description	Price
V1580SCC	6020-80	Pilot66/99 card cage (256x16 or 256x32). Accepts up to 8 switcher boards. Includes motherboard, line sync board and universal power supply.	
V1566SCPU	6159-20	Internal CPU for Pilot66/99 Card Cage. Controls matrix switching for up to 512 cameras and 64 monitors.	
V1510S-16	6023-20	Video Switcher Board. Provides video switching for up to 32 cameras and 16 monitors.	
V1510S-32	6023-30	Video Switcher Board. Provides video switching for up to 32 cameras and 32 monitors.	
V1566TDT-16	4807-30	Time/Date/Title AMP Card for monitors 1-16. For use with V1566SCPU only.	
V1566ATDT-32	4807-40	Time/Date/Title AMP Card for monitors 17-32. For use with V1566SCPU only. Plugs in to V1566TDT-16 circuit card.	
V1599-PKA	8234-10	Programming Keyboard for V1544SCPU, V1566SCPU, and V1599CPU.	
V1566DB	4807-90	Interface Board. Required in Master cages for use with an external CPU controller configuration for V1599 systems. Required in Secondary cages for V1566 systems.	
V1566CONV-32	4807-81	RS422 to CMOS Converter. Required for expanding cameras from 257 to 512 on a Master/Slave cage configuration. Supports 16 or 32 monitors.	
V1566MS	4807-50	Primary/Secondary Cable. Control interface cable between primary cage (cameras 1-256) and secondary cage(s) (cameras 257-512).	
V15662L	4807-60	2nd Layer Cable. Control interface cable between 1st layer cages (monitors 1-16 or 1-32) and 2nd layer cages (monitors 17-32 or 33-64).	
V1510RP32I	4628-25	32-Channel Camera Input Panel. Contains 32 BNC connectors.	
V1510RP32-O	4628-45	32-Channel Camera Output Panel. Contains 32 BNC connectors.	
V1550RCP	4471-20	Blank rear closure panel for unused card positions.	
V15RCB-24	7867-05	24-inch coaxial cable for looping video inputs from a switcher card to external devices. D-shell connector on one end, 8 BNC connectors on the other end.	
V1566RC-36	4472-25	36-inch coaxial cable for looping video inputs from a switcher card to external devices. D-shell on each end.	
V75TR-SHD	4479-00	75-ohm terminator for D-shell outputs.	
V75T	3260-00	75-ohm terminator for BNC outputs.	

Product Information and Pricing — Pilot Select Prepac

Model Number	Product Code	Description	Price
PS32X16	9335-30	Pilot 1566 Matrix Prepac; Controls 32 Cameras and 16 Monitors; includes 1 switcher card cage, internal V1566 CPU and titler, programming keyboard and 9-in monochrome monitor	
PS32X32	9336-30	Pilot 1566 Matrix Prepac; Controls 32 Cameras and 32 Monitors; includes 2 switcher card cages, internal V1566 CPU and titler, programming keyboard and 9-in monochrome monitor	
PS32X48	9337-30	Pilot 1566 Matrix Prepac; Controls 32 Cameras and 48 Monitors; includes 2 switcher card cages, internal V1566 CPU and titler, programming keyboard and 9-in monochrome monitor	
PS32X64	9338-30	Pilot 1566 Matrix Prepac; Controls 32 Cameras and 64 Monitors; includes 2 switcher card cages, internal V1566 CPU and titler, programming keyboard and 9-in monochrome monitor	
PS64X16	9339-30	Pilot 1566 Matrix Prepac; Controls 64 Cameras and 16 Monitors; includes 1 switcher card cage, internal V1566 CPU and titler, programming keyboard and 9-in monochrome monitor	
PS64X32	9340-30	Pilot 1566 Matrix Prepac; Controls 64 Cameras and 32 Monitors; includes 2 switcher card cages, internal V1566 CPU and titler, programming keyboard and 9-in monochrome monitor	
PS64X48	9341-30	Pilot 1566 Matrix Prepac; Controls 64 Cameras and 48 Monitors; includes 2 switcher card cages, internal V1566 CPU and titler, programming keyboard and 9-in monochrome monitor	
PS64X64	9342-30	Pilot 1566 Matrix Prepac; Controls 64 Cameras and 64 Monitors; includes 2 switcher card cages, internal V1566 CPU and titler, programming keyboard and 9-in monochrome monitor	
PS96X16	9344-30	Pilot 1566 Matrix Prepac; Controls 96 Cameras and 16 Monitors; includes 2 switcher card cages, internal V1566 CPU and titler, programming keyboard and 9-in monochrome monitor	
PS96X32	9345-30	Pilot 1566 Matrix Prepac; Controls 96 Cameras and 32 Monitors; includes 2 switcher card cages, internal V1566 CPU and titler, programming keyboard and 9-in monochrome monitor	
PS96X48	9346-30	Pilot 1566 Matrix Prepac; Controls 96 Cameras and 48 Monitors; includes 2 switcher card cages, internal V1566 CPU and titler, programming keyboard and 9-in monochrome monitor	
PS96X64	9347-30	Pilot 1566 Matrix Prepac; Controls 96 Cameras and 64 Monitors; includes 2 switcher card cages, internal V1566 CPU and titler, programming keyboard and 9-in monochrome monitor	
PS128X16	9348-30	Pilot 1566 Matrix Prepac; Controls 128 Cameras and 16 Monitors; includes 2 switcher card cages, internal V1566 CPU and titler, programming keyboard and 9-in monochrome monitor	

Model Number	Product Code	Description	Price
PS128X32	9349-30	Pilot 1566 Matrix Prepacs; Controls 128 Cameras and 32 Monitors; includes 2 switcher card cages, internal V1566 CPU and titler, programming keyboard and 9-in monochrome monitor	
PS128X48	9350-30	Pilot 1566 Matrix Prepacs; Controls 128 Cameras and 48 Monitors; includes 2 switcher card cages, internal V1566 CPU and titler, programming keyboard and 9-in monochrome monitor	
PS128X64	9351-30	Pilot 1566 Matrix Prepacs; Controls 128 Cameras and 64 Monitors; includes 2 switcher card cages, internal V1566 CPU and titler, programming keyboard and 9-in monochrome monitor	
PS160X16	9352-30	Pilot 1566 Matrix Prepacs; Controls 160 Cameras and 16 Monitors; includes 2 switcher card cages, internal V1566 CPU and titler, programming keyboard and 9-in monochrome monitor	
PS160X32	9353-30	Pilot 1566 Matrix Prepacs; Controls 160 Cameras and 32 Monitors; includes 2 switcher card cages, internal V1566 CPU and titler, programming keyboard and 9-in monochrome monitor	
PS160X48	9354-30	Pilot 1566 Matrix Prepacs; Controls 160 Cameras and 48 Monitors; includes 2 switcher card cages, internal V1566 CPU and titler, programming keyboard and 9-in monochrome monitor	
PS160X64	9355-30	Pilot 1566 Matrix Prepacs; Controls 160 Cameras and 64 Monitors; includes 2 switcher card cages, internal V1566 CPU and titler, programming keyboard and 9-in monochrome monitor	
PS192X16	9356-30	Pilot 1566 Matrix Prepacs; Controls 192 Cameras and 16 Monitors; includes 2 switcher card cages, internal V1566 CPU and titler, programming keyboard and 9-in monochrome monitor	
PS192X32	9357-30	Pilot 1566 Matrix Prepacs; Controls 192 Cameras and 32 Monitors; includes 2 switcher card cages, internal V1566 CPU and titler, programming keyboard and 9-in monochrome monitor	
PS192X48	9358-30	Pilot 1566 Matrix Prepacs; Controls 192 Cameras and 48 Monitors; includes 2 switcher card cages, internal V1566 CPU and titler, programming keyboard and 9-in monochrome monitor	
PS192X64	9359-30	Pilot 1566 Matrix Prepacs; Controls 192 Cameras and 64 Monitors; includes 2 switcher card cages, internal V1566 CPU and titler, programming keyboard and 9-in monochrome monitor	
PS224X16	9360-30	Pilot 1566 Matrix Prepacs; Controls 224 Cameras and 16 Monitors; includes 2 switcher card cages, internal V1566 CPU and titler, programming keyboard and 9-in monochrome monitor	
PS224X32	9361-30	Pilot 1566 Matrix Prepacs; Controls 224 Cameras and 32 Monitors; includes 2 switcher card cages, internal V1566 CPU and titler, programming keyboard and 9-in monochrome monitor	
PS224X48	9362-30	Pilot 1566 Matrix Prepacs; Controls 224 Cameras and 48 Monitors; includes 2 switcher card cages, internal V1566 CPU and titler, programming keyboard and 9-in monochrome monitor	
PS224X64	9363-30	Pilot 1566 Matrix Prepacs; Controls 224 Cameras and 64 Monitors; includes 2 switcher card cages, internal V1566 CPU and titler, programming keyboard and 9-in monochrome monitor	

Sales Alert: Pilot Select V1566 Digital Control and Matrix Switching System

Model Number	Product Code	Description	Price
PS256X16	9364-30	Pilot 1566 Matrix Prepacs; Controls 256 Cameras and 16 Monitors; includes 2 switcher card cages, internal V1566 CPU and titler, programming keyboard and 9-in monochrome monitor	
PS256X32	9365-30	Pilot 1566 Matrix Prepacs; Controls 256 Cameras and 32 Monitors; includes 2 switcher card cages, internal V1566 CPU and titler, programming keyboard and 9-in monochrome monitor	
PS256X48	9366-30	Pilot 1566 Matrix Prepacs; Controls 256 Cameras and 48 Monitors; includes 2 switcher card cages, internal V1566 CPU and titler, programming keyboard and 9-in monochrome monitor	
PS256X64	9367-30	Pilot 1566 Matrix Prepacs; Controls 256 Cameras and 64 Monitors; includes 2 switcher card cages, internal V1566 CPU and titler, programming keyboard and 9-in monochrome monitor	
PS288X16	9368-30	Pilot 1566 Matrix Prepacs; Controls 288 Cameras and 16 Monitors; includes 2 switcher card cages, internal V1566 CPU and titler, programming keyboard and 9-in monochrome monitor	
PS288X32	9369-30	Pilot 1566 Matrix Prepacs; Controls 288 Cameras and 32 Monitors; includes 2 switcher card cages, internal V1566 CPU and titler, programming keyboard and 9-in monochrome monitor	
PS288X48	9370-30	Pilot 1566 Matrix Prepacs; Controls 288 Cameras and 48 Monitors; includes 2 switcher card cages, internal V1566 CPU and titler, programming keyboard and 9-in monochrome monitor	
PS288X64	9371-30	Pilot 1566 Matrix Prepacs; Controls 288 Cameras and 64 Monitors; includes 2 switcher card cages, internal V1566 CPU and titler, programming keyboard and 9-in monochrome monitor	
PS320X16	9372-30	Pilot 1566 Matrix Prepacs; Controls 320 Cameras and 16 Monitors; includes 2 switcher card cages, internal V1566 CPU and titler, programming keyboard and 9-in monochrome monitor	
PS320X32	9373-30	Pilot 1566 Matrix Prepacs; Controls 320 Cameras and 32 Monitors; includes 2 switcher card cages, internal V1566 CPU and titler, programming keyboard and 9-in monochrome monitor	
PS320X48	9374-30	Pilot 1566 Matrix Prepacs; Controls 320 Cameras and 48 Monitors; includes 2 switcher card cages, internal V1566 CPU and titler, programming keyboard and 9-in monochrome monitor	
PS320X64	9375-30	Pilot 1566 Matrix Prepacs; Controls 288 Cameras and 64 Monitors; includes 2 switcher card cages, internal V1566 CPU and titler, programming keyboard and 9-in monochrome monitor	
PS352X16	9376-30	Pilot 1566 Matrix Prepacs; Controls 352 Cameras and 16 Monitors; includes 2 switcher card cages, internal V1566 CPU and titler, programming keyboard and 9-in monochrome monitor	
PS352X32	9377-30	Pilot 1566 Matrix Prepacs; Controls 352 Cameras and 32 Monitors; includes 2 switcher card cages, internal V1566 CPU and titler, programming keyboard and 9-in monochrome monitor	
PS352X48	9378-30	Pilot 1566 Matrix Prepacs; Controls 352 Cameras and 48 Monitors; includes 2 switcher card cages, internal V1566 CPU and titler, programming keyboard and 9-in monochrome monitor	
PS352X64	9379-30	Pilot 1566 Matrix Prepacs; Controls 352 Cameras and 64 Monitors; includes 2 switcher card cages, internal V1566 CPU and titler, programming keyboard and 9-in monochrome monitor	
PS384X16	9380-30	Pilot 1566 Matrix Prepacs; Controls 384 Cameras and 16 Monitors; includes 2 switcher card cages, internal V1566 CPU and titler, programming keyboard and 9-in monochrome monitor	

Model Number	Product Code	Description	Price
PS384X32	9381-30	Pilot 1566 Matrix Prepacs; Controls 384 Cameras and 32 Monitors; includes 2 switcher card cages, internal V1566 CPU and titler, programming keyboard and 9-in monochrome monitor	
PS384X48	9382-30	Pilot 1566 Matrix Prepacs; Controls 384 Cameras and 48 Monitors; includes 2 switcher card cages, internal V1566 CPU and titler, programming keyboard and 9-in monochrome monitor	
PS384X64	9383-30	Pilot 1566 Matrix Prepacs; Controls 384 Cameras and 64 Monitors; includes 2 switcher card cages, internal V1566 CPU and titler, programming keyboard and 9-in monochrome monitor	
PS416X16	9390-30	Pilot 1566 Matrix Prepacs; Controls 416 Cameras and 16 Monitors; includes 2 switcher card cages, internal V1566 CPU and titler, programming keyboard and 9-in monochrome monitor	
PS416X32	9391-30	Pilot 1566 Matrix Prepacs; Controls 416 Cameras and 32 Monitors; includes 2 switcher card cages, internal V1566 CPU and titler, programming keyboard and 9-in monochrome monitor	
PS416X48	9392-30	Pilot 1566 Matrix Prepacs; Controls 416 Cameras and 48 Monitors; includes 2 switcher card cages, internal V1566 CPU and titler, programming keyboard and 9-in monochrome monitor	
PS416X64	9393-30	Pilot 1566 Matrix Prepacs; Controls 416 Cameras and 64 Monitors; includes 2 switcher card cages, internal V1566 CPU and titler, programming keyboard and 9-in monochrome monitor	
PS448X16	9394-30	Pilot 1566 Matrix Prepacs; Controls 448 Cameras and 16 Monitors; includes 2 switcher card cages, internal V1566 CPU and titler, programming keyboard and 9-in monochrome monitor	
PS448X32	9395-30	Pilot 1566 Matrix Prepacs; Controls 448 Cameras and 32 Monitors; includes 2 switcher card cages, internal V1566 CPU and titler, programming keyboard and 9-in monochrome monitor	
PS448X48	9396-30	Pilot 1566 Matrix Prepacs; Controls 448 Cameras and 48 Monitors; includes 2 switcher card cages, internal V1566 CPU and titler, programming keyboard and 9-in monochrome monitor	
PS448X64	9397-30	Pilot 1566 Matrix Prepacs; Controls 448 Cameras and 64 Monitors; includes 2 switcher card cages, internal V1566 CPU and titler, programming keyboard and 9-in monochrome monitor	
PS480X16	9398-30	Pilot 1566 Matrix Prepacs; Controls 480 Cameras and 16 Monitors; includes 2 switcher card cages, internal V1566 CPU and titler, programming keyboard and 9-in monochrome monitor	
PS480X32	9399-30	Pilot 1566 Matrix Prepacs; Controls 480 Cameras and 32 Monitors; includes 2 switcher card cages, internal V1566 CPU and titler, programming keyboard and 9-in monochrome monitor	
PS480X48	9400-30	Pilot 1566 Matrix Prepacs; Controls 480 Cameras and 48 Monitors; includes 2 switcher card cages, internal V1566 CPU and titler, programming keyboard and 9-in monochrome monitor	
PS480X64	9401-30	Pilot 1566 Matrix Prepacs; Controls 480 Cameras and 64 Monitors; includes 2 switcher card cages, internal V1566 CPU and titler, programming keyboard and 9-in monochrome monitor	
PS512X16	9402-30	Pilot 1566 Matrix Prepacs; Controls 512 Cameras and 16 Monitors; includes 2 switcher card cages, internal V1566 CPU and titler, programming keyboard and 9-in monochrome monitor	

**Sales Alert: Pilot Select V1566 Digital Control and Matrix Switching System**

Model Number	Product Code	Description	Price
PS512X32	9403-30	Pilot 1566 Matrix Prepacs; Controls 512 Cameras and 32 Monitors; includes 2 switcher card cages, internal V1566 CPU and titler, programming keyboard and 9-in monochrome monitor	
PS512X48	9404-30	Pilot 1566 Matrix Prepacs; Controls 512 Cameras and 48 Monitors; includes 2 switcher card cages, internal V1566 CPU and titler, programming keyboard and 9-in monochrome monitor	
PS512X64	9405-30	Pilot 1566 Matrix Prepacs; Controls 512 Cameras and 64 Monitors; includes 2 switcher card cages, internal V1566 CPU and titler, programming keyboard and 9-in monochrome monitor	