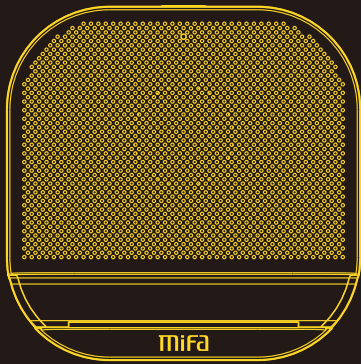


# Mifa



## 15

Bracket Speaker

### FCC WARNING

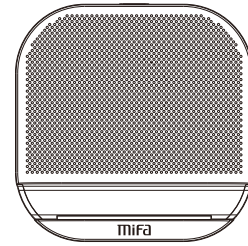
This device complies with part 15 of the FCC Rules. Operation is subject to the following two conditions: (1) this device may not cause harmful interference, and (2) this device must accept any interference received, including interference that may cause undesired operation. Any changes or modifications not expressly approved by the party responsible for compliance could void the user's authority to operate the equipment.

NOTE: This equipment has been tested and found to comply with the limits for a Class B digital device, pursuant to Part 15 of the FCC Rules. These limits are designed to provide reasonable protection against harmful interference in a residential installation. This equipment generates, uses and can radiate radio frequency energy and, if not installed and used in accordance with the instructions, may cause harmful interference to radio communications. However, there is no guarantee that interference will not occur in a particular installation.

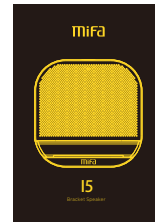
If this equipment does cause harmful interference to radio or television reception, which can be determined by turning the equipment off and on, the user is encouraged to try to correct the interference by one or more of the following measures:

- Reorient or relocate the receiving antenna.
  - Increase the separation between the equipment and receiver.
  - Connect the equipment into an outlet on a circuit different from that to which the receiver is connected.
  - Consult the dealer or an experienced radio/TV technician for help.
- To maintain compliance with FCC's RF Exposure guidelines, This equipment should be installed and operated with minimum distance between 20cm from the radiator to your body. Use only the supplied antenna. CAUTION: Changes or modifications not expressly approved by the party responsible for compliance could void the user's authority to operate the equipment.
- FCC ID: 2ABNJ-15

### Packing Content



Speaker 1pc



User Manual 1pc



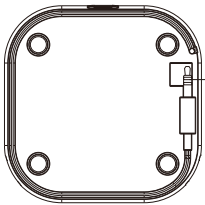
USB cable 1pc

### Packing Content

Long-press on/Long-press off



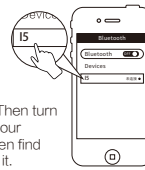
Silicone sucker  
Charging with a DC5V-1A USB adaptor



Accommodated 3.5mm audio cable

Note:  
1. If change battery improperly, there is danger of explosion. Only can use same or equal performance battery. 2. The battery can't be exposed to sunshine, fire or high temperature environment.

### Bluetooth connection



Long-press power key of speaker. Then turn on the bluetooth search function in your cell-phone,ipad or other device. When find the bluetooth device "15", connect it.

### Using Auxiliary/Line mode



Long-press power key to turn on the speaker, then input the 3.5mm audio-cable to connect the cell-phone or other device.

### Technique Parameters

Bluetooth version	Bluetooth 4.2
Bulid-in AUX	3.5mm cable input
Speaker unit	1.5 inches 4Ω
Out-put power	3W
Frequency response	80Hz-20KHz
Power	Built-in 600mAh lithium battery USB Input power DC5V=1A
Dimension	86mmx86mmx26mm Net weight 100g (include built-in lithium battery)

Multi-function

Compatible with 3.5-7 inch smart cell-phone, which can place stably in speakers groove.

