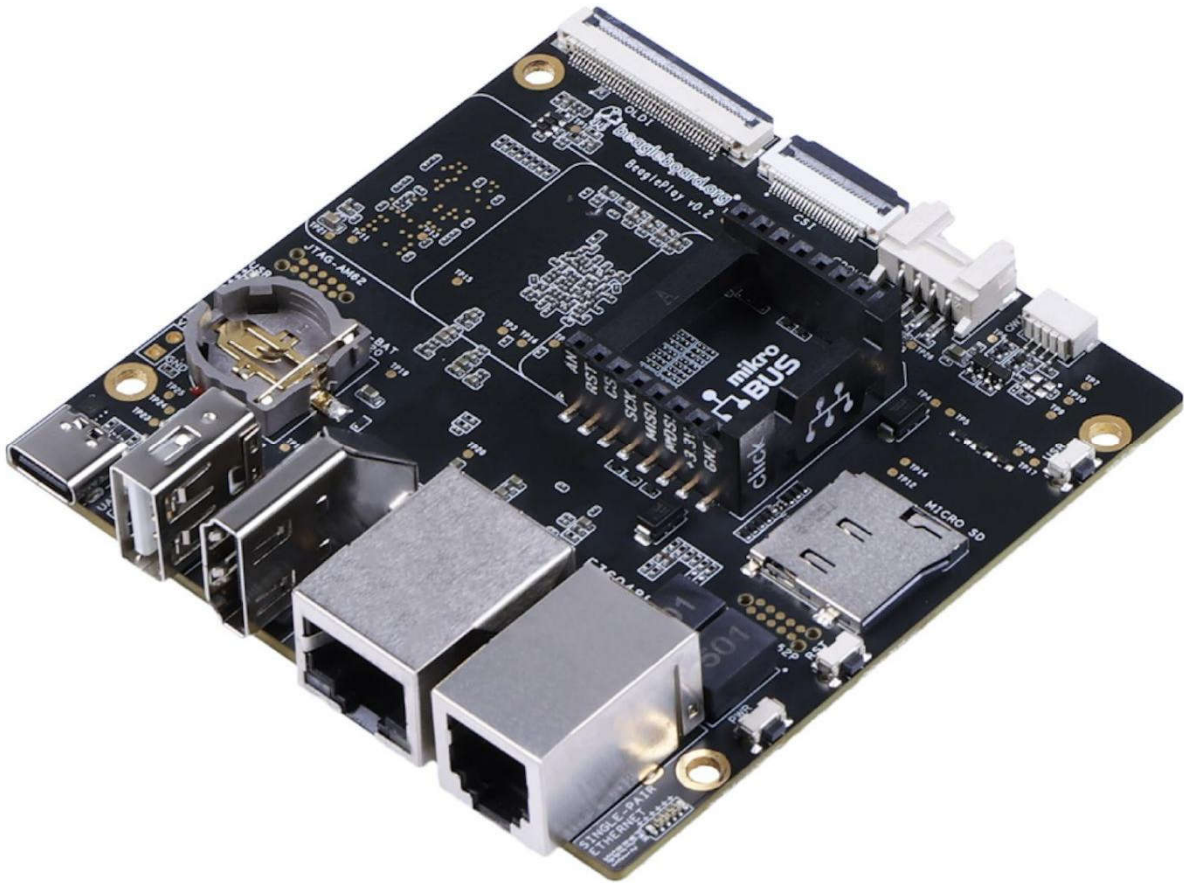


BeaglePlay User Manual

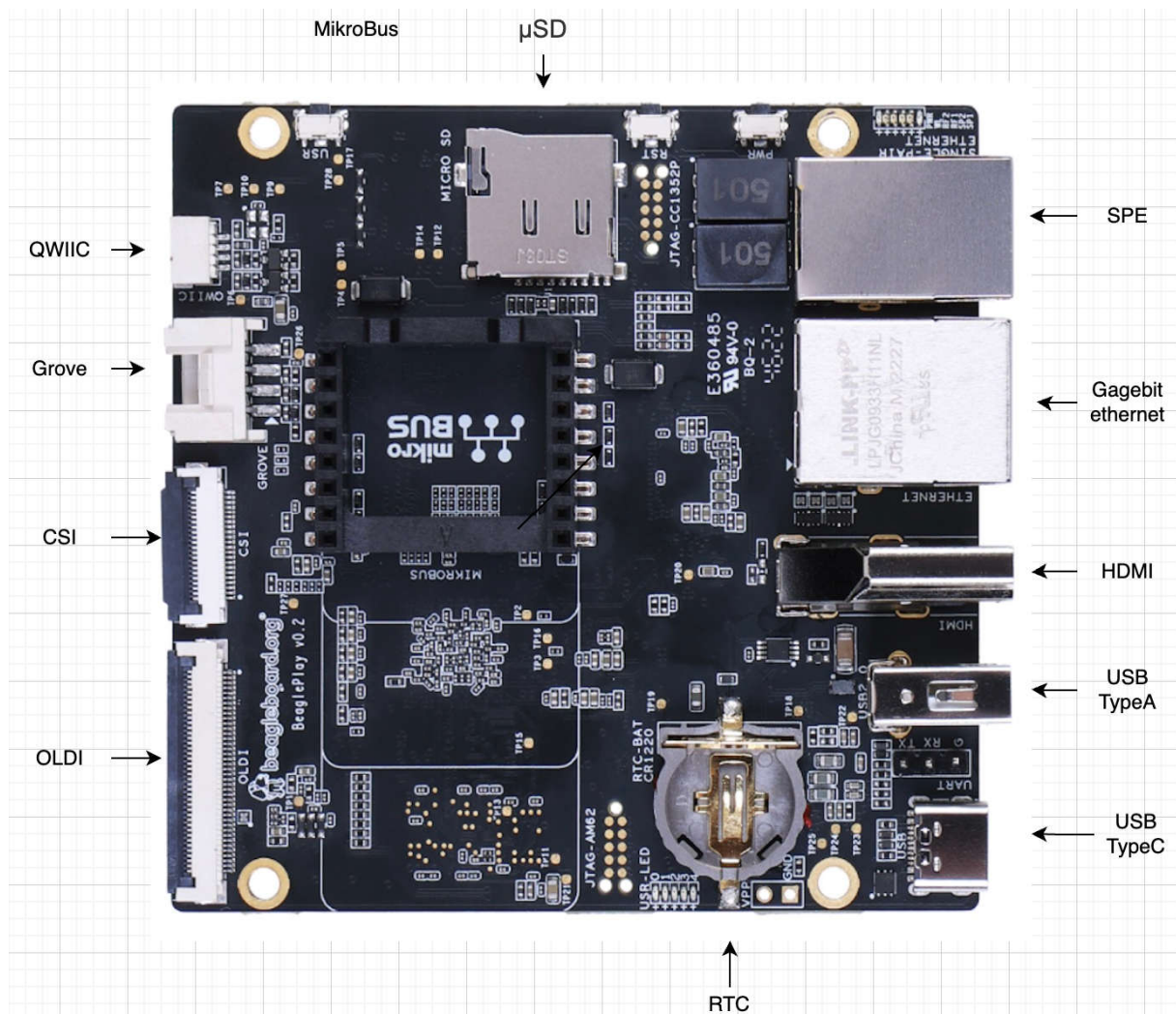
Getting Started with BeaglePlay



Features

- Memory: 2GB DDR4, on-board 16GB eMMC flash with Linux
- Networking:
 1. 2.4GHz/5GHz WiFi, 2.4GHz/SubG IEEE802.15.4 software-defined-radio, Gigabit Ethernet,
 2. single-pair Ethernet with 5V/250mA power-over-data-line
- Connections: HDMI, μ SD, Gigabit Ethernet, USB Type-A (host), USB Type-C (power/device), serial debug
- Add-on board expansion: mikroBUS (UART/I²C/SPI/ADC/PWM/GPIO), QWIIC (I²C), Grove (UART/I²C/GPIO/ADC), OLDI display, CSI camera

Hardware Overview



Quick Start with BeaglePlay

If you want to get started with the BeaglePlay in the most fastest and easiest way, you can follow the guide below.

Hardware Required

- BeaglePlay
- 4 antennas
- Screen display
- HDMI cable
- FPC camera
- USB type C cable for (power on)

You need to prepare the following hardware before getting started:

2. Power Up and Get Started

After connecting peripherals(For example: HDMI screen) , and then connect 5V Type-C power supply for BeaglePlay.After connecting to the power supply,The system will finish booting in a short time.

Reminder: The default account is "debian" and the password is "temppwd"



FCC

Changes or modifications not expressly approved by the party responsible for compliance could void the user's authority to operate the equipment.

This device complies with Part 15 of the FCC Rules. Operation is subject to the following two conditions:

- (1) this device may not cause harmful interference, and
- (2) this device must accept any interference received, including interference that may cause undesired operation.

This transmitter must not be co-located or operating in conjunction with any other antenna or transmitter.

Note: This equipment has been tested and found to comply with the limits for a Class B digital device, pursuant to Part 15 of the FCC Rules. These limits are designed to provide reasonable protection against harmful interference in a residential installation. This equipment generates, uses, and can radiate radio frequency energy, and if not installed and used in accordance with the instructions, may cause harmful interference to radio communications. However, there is no guarantee that interference will not occur in a particular installation. If this equipment does cause harmful interference to radio or television reception, which can be determined by turning the equipment off and on, the user is encouraged to try to correct the interference by one or more of the following measures:

- Reorient or relocate the receiving antenna.
- Increase the separation between the equipment and receiver.
- Connect the equipment into an outlet on a circuit different from that to which the receiver is connected.
- Consult the dealer or an experienced radio/TV technician for help.

This device complies with FCC radiation exposure limits set forth for an uncontrolled environment. This device should be installed and operated with minimum distance 20cm between the radiator & your body.