

> About Us

> Go Further

> You Should Know

### Seed Studio

Seed is a hardware innovation platform helping makers grow inspirations into differentiating products. Seed can help makers productize designs, anything from 1 to 10,000 pieces.

[seedstudio.com](http://seedstudio.com)

### MediaTek Inc.

MediaTek is a pioneering fabless semiconductor company, and a market leader in cutting-edge systems on a chip for wireless communications and connectivity, HDTV, DVD and Blu-ray.

[mediatek.com](http://mediatek.com)

### MediaTek Labs

The worldwide ecosystem supporting device creation, application development and services based around MediaTek offerings.

[labs.mediatek.com](http://labs.mediatek.com)



**\$ 29.90**

#### Sidekick Basic Kit for LinkIt ONE

A range of components including LEDs, capacitors, resistors, a buzzer, servo and more to get your prototype underway.



**\$ 69.90**

#### Grove - Starter Kit for LinkIt ONE

A range of sensors including UV, dust, temperature, barometer, accelerometer and more so your project can sense the world around it.

Changes or modifications not expressly approved by the party responsible for compliance could void the user's authority to operate the equipment.

This equipment has been tested and found to comply with the limits for a Class B digital device, pursuant to Part 15 of the FCC Rules. These limits are designed to provide reasonable protection against harmful interference in a residential installation. This equipment generates, uses and can radiate radio frequency energy and, if not installed and used in accordance with the instructions, may cause harmful interference to radio communications. However, there is no guarantee that interference will not occur in a particular installation.

If this equipment does cause harmful interference to radio or television reception, which can be determined by turning the equipment off and on, the user is encouraged to try to correct the interference by one or more of the following measures:

- Reorient or relocate the receiving antenna.
- Increase the separation between the equipment and receiver.
- Connect the equipment into an outlet on a circuit different from that to which the receiver is connected.
- Consult the dealer or an experienced radio/TV technician for help.

\*This device complies with Part 15 of the FCC Rules. Operation is subject to the following two conditions: (1) This device may not cause harmful interference, and (2) this device must accept any interference received, including interference that may cause undesired operation.

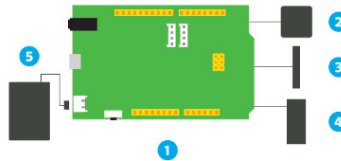
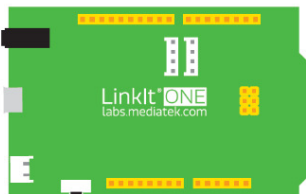
\*This equipment complies with the FCC RF radiation exposure limits set forth for an uncontrolled environment. This equipment should be installed and operated with a minimum distance of 20cm between the radiator and any part of your body.

# LinkIt™ ONE

Quick Start Guide

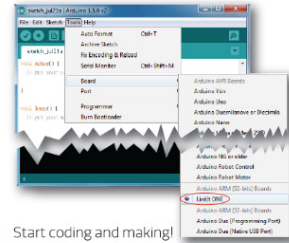
> What's Inside

> Get Started



- 1 LinkIt ONE x1
- 2 GPS Antenna x1
- 3 Wi-Fi/Bluetooth Antenna x1
- 4 GSM Antenna x1
- 5 Lithium-ion Battery x1

1. Install Arduino IDE 1.5.6 or later [arduino.cc/en/main/software](http://arduino.cc/en/main/software)
2. Register on MediaTek Labs [labs.mediatek.com/register](http://labs.mediatek.com/register)
3. Download LinkIt Developer's Guide [labs.mediatek.com/linkitguide](http://labs.mediatek.com/linkitguide)
4. Install LinkIt SDK for Arduino [labs.mediatek.com/linkitsdk](http://labs.mediatek.com/linkitsdk)
5. Select the LinkIt ONE board



6. Start coding and making!

