



IBK-06 iPad Air

Multifunctional Bluetooth Keyboard Case

User Manual



Thank you for your purchase of this product and we hope you enjoy using it. Please ensure that you fully read and understand the information within this user manual prior to using the product.

Precautions

- Do not drop or strong impact your keyboard.
Do not disassemble or modify the unit by yourself in any way, otherwise the
- warranty will become invalid.
Do not expose the unit in humid environment to avoid any malfunction.
- Use the correct power supply for charging, improper power supply charge will
- damage the keyboard or cause fire risk.

Schematic Diagram



Using Method



Installation and Disassembly



- ① As the pictures, pressing the adjusting button, at the same time take the stand to another side to separate it from the keyboard case.
- ② Stand and keyboard can be completely separated. And they can be used independently.



- ① Open the case, press the rotation button with your thumb and forefinger as the above pictures.
- ② Gently remove the case, then it separates from the stand.

Specifications

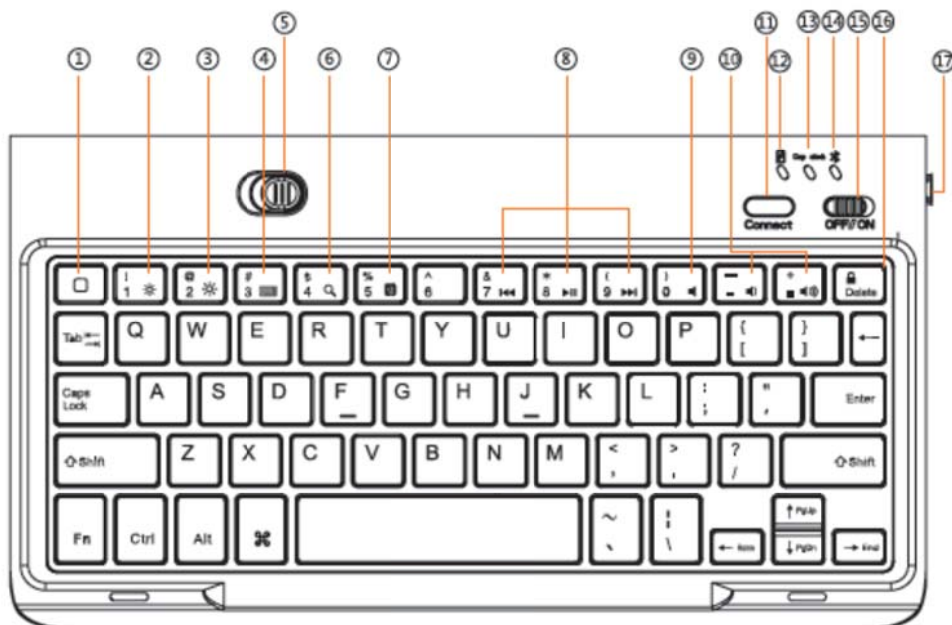
Product name: iPad Air
Multifunctional Bluetooth Keyboard Case
Model: IBK-06
Material: ABS
Size: 245 * 187.5 * 26.9mm
Weight: 450g
Bluetooth: Bluetooth 3.0

Distance: 10M
Charge: DC5V
Battery: Built-in 3.7V 250mAh
lithium battery
Standby: 70 days
Continuous working time: 80 H
Applicable devices: iPad Air

Function Feature

- For iOS7 system, 360 degrees folio case.
- Built-in 250mA li-ion battery, continuous working time up to 80 hours, standby 70 days.
- Adopt Broadcom BCM20730 Bluetooth 3.0 chip.
- Scissor key core, typing easy and versatile QWERTY keyboard.

Product Structure

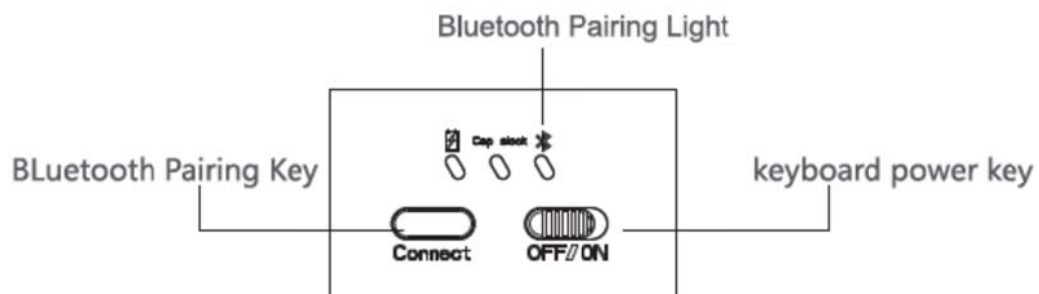


- | | |
|-------------------------------|---------------------------------|
| 1、 HOME | 10、 Volume control |
| 2、 Reduce brightness | 11、 Bluetooth pairing |
| 3、 Increase brightness | 12、 Charge light |
| 4、 Switching virtual keyboard | 13、 Capitalize light |
| 5、 Lock bracket switch | 14、 Bluetooth pairing light |
| 6、 Search | 15、 Power key(on/off) |
| 7、 Lock bracket switch | 16、 Lock |
| 8、 Music control | 17、 Micro USB slot(charge slot) |
| 9、 Mute | |

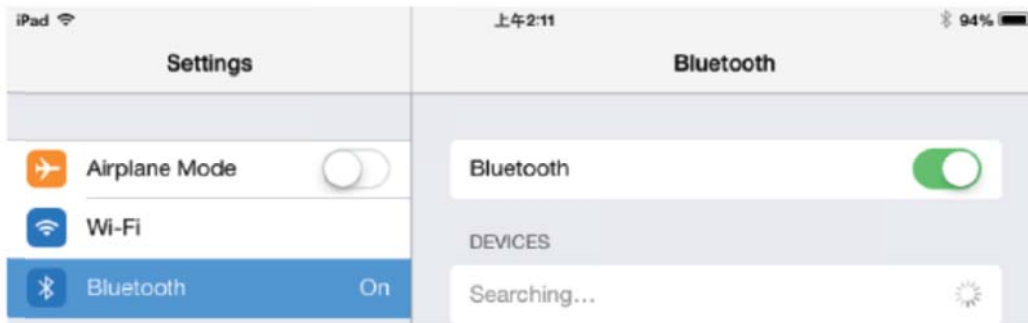
Note: shortcuts: Fn + shortcut key

Instruction

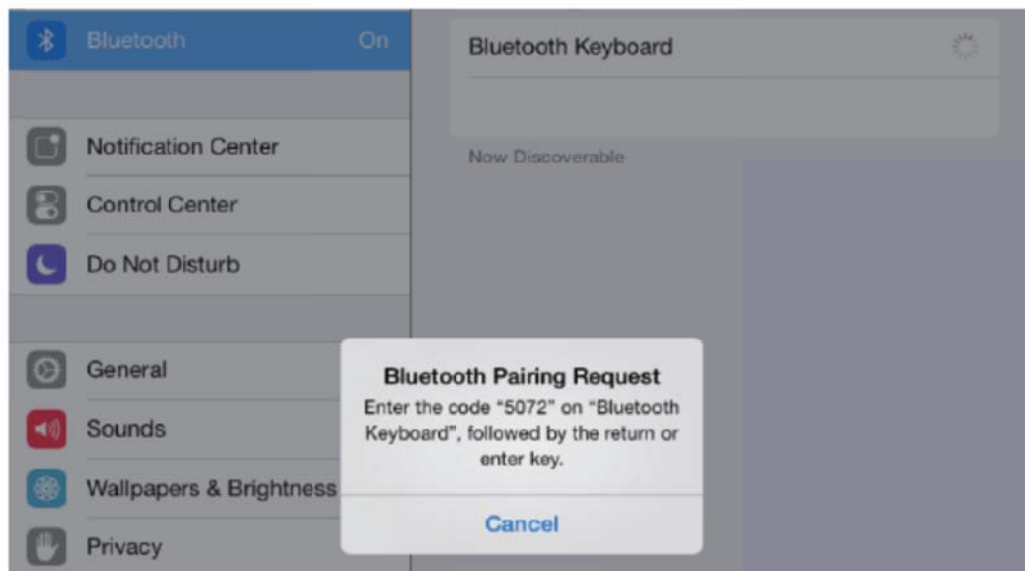
- 1、 Turn on the power of Bluetooth keyboard.
- 2、 Press the pairing button on Bluetooth keyboard, and the Bluetooth light will flash, the Bluetooth keyboard is in pairing status.



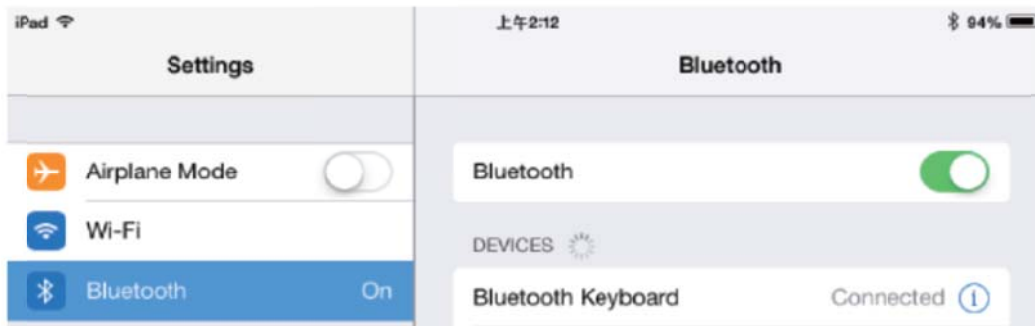
- 3、 Open Bluetooth of the device you are using, and search the device named "Bluetooth Keyboard".



4. After the success of search equipment, click on "Bluetooth Keyboard" to connect, there will appear a group of figures on the screen, then key in the figures and press "Enter" on Bluetooth keyboard to confirm.



5. Bluetooth keyboard pairing connection is successful



Note: After a successful pairing, only need switch the power to turn on the Bluetooth device for the next use ,Bluetooth keyboard will automatically connect to the last device, no further pairing operation.

FAQ

Q1: Why my tablet can not be connected to Bluetooth keyboard?

- A: 1) Please check whether the Bluetooth keyboard is in pairing mode, and then turn on the Bluetooth of tablet to search and connect.
2) Check whether the Bluetooth keyboard power is sufficient.It cannot be connected if it lacks of power. Connect Bluetooth keyboard after fully charged.

Q2: How to use the shortcuts function on the Bluetooth keyboard?

- A: The way is to press keys of " Fn +shortcut ".

Package List

Mutifunctional Bluetooth Keyboard Case *1

User Manual *1

USB Charging Cable *1

FCC WARNING

This device complies with Part 15 of the FCC Rules. Operation is subject to the following two conditions:

- (1) This device may not cause harmful interference, and
- (2) this device must accept any interference received, including interference that may cause undesired operation.

NOTE 1: Any changes or modifications to this unit not expressly approved by the party responsible for compliance could void the user's authority to operate the equipment.