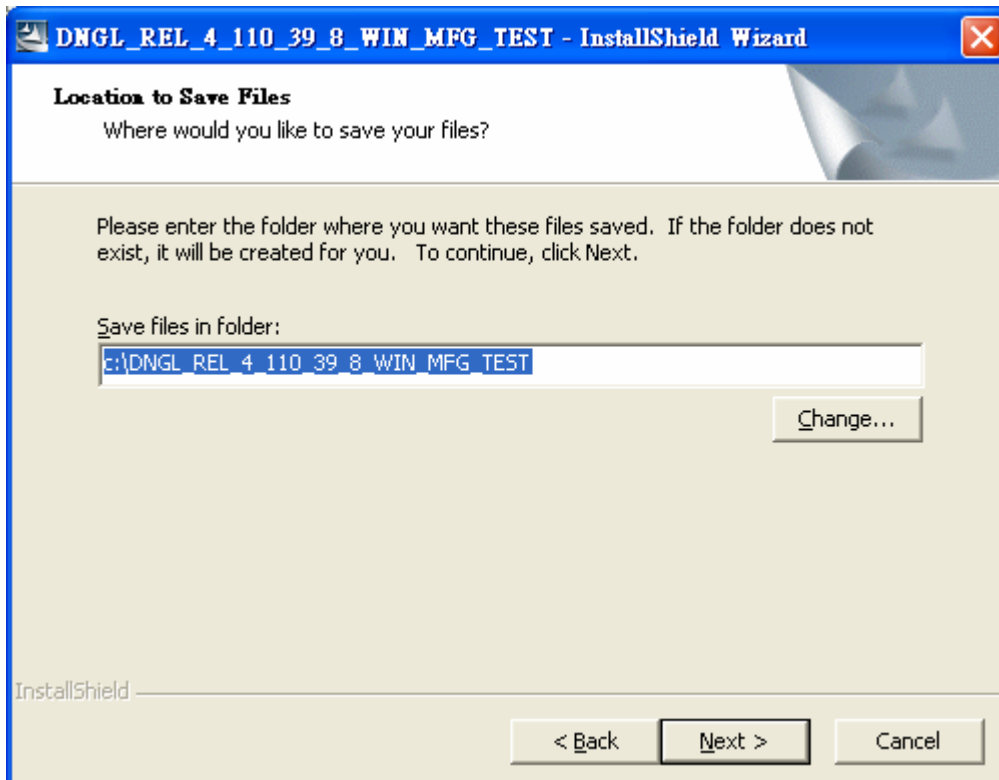
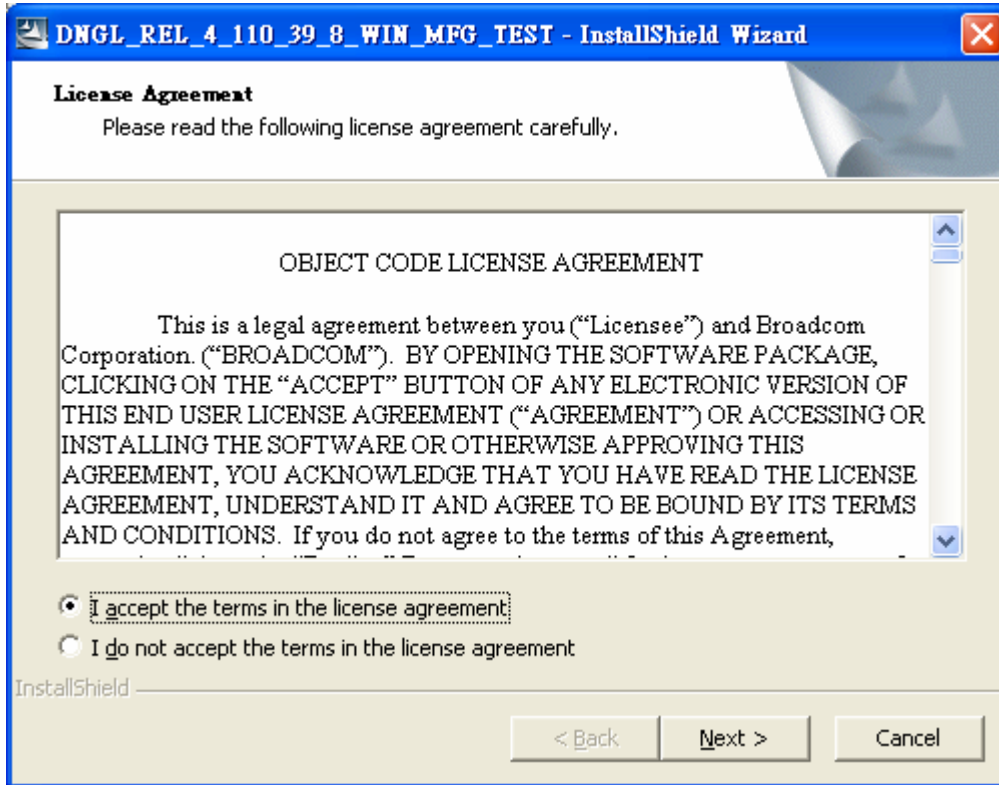
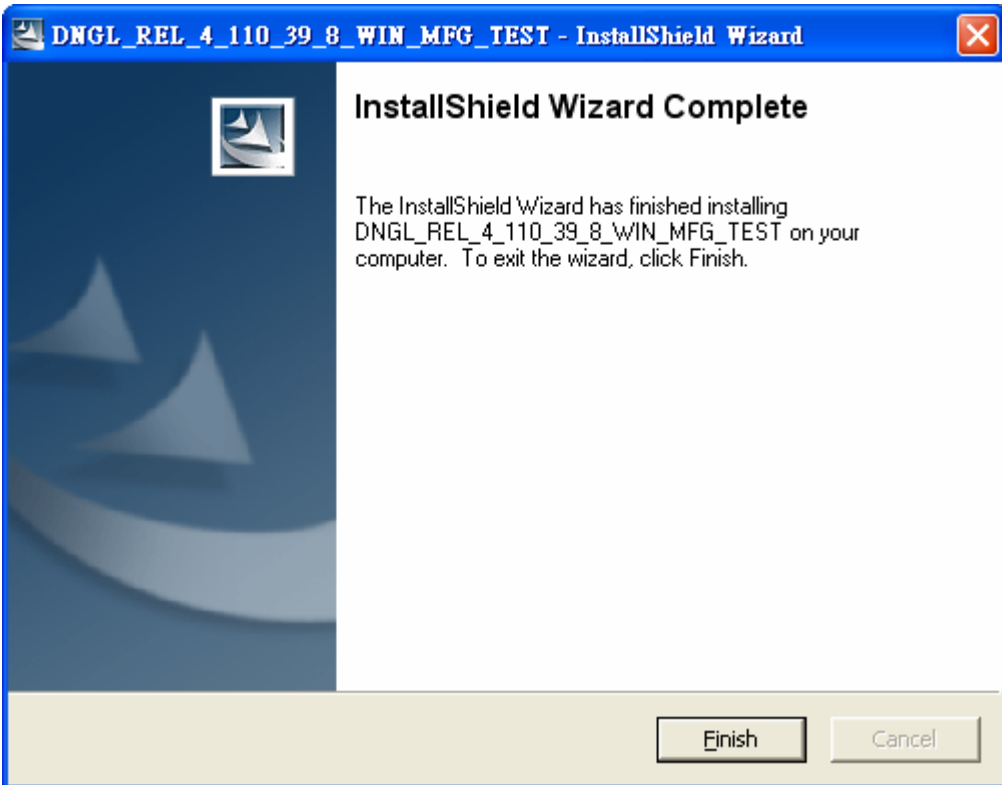


WLU3072-D69(RoHS) Installation Operation

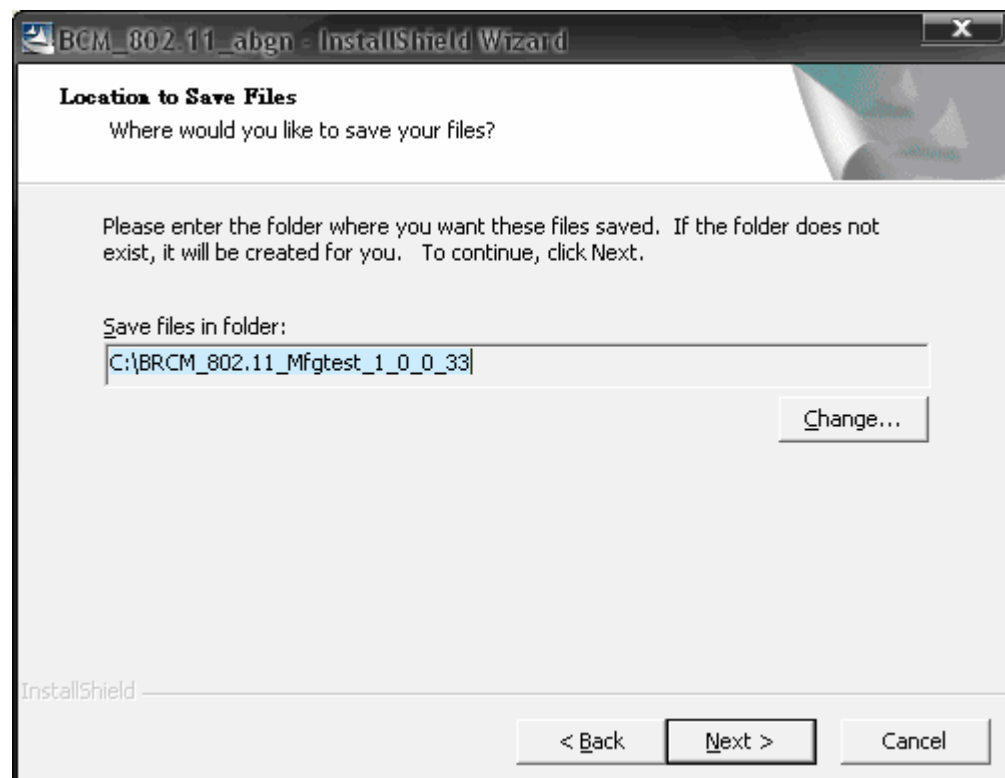
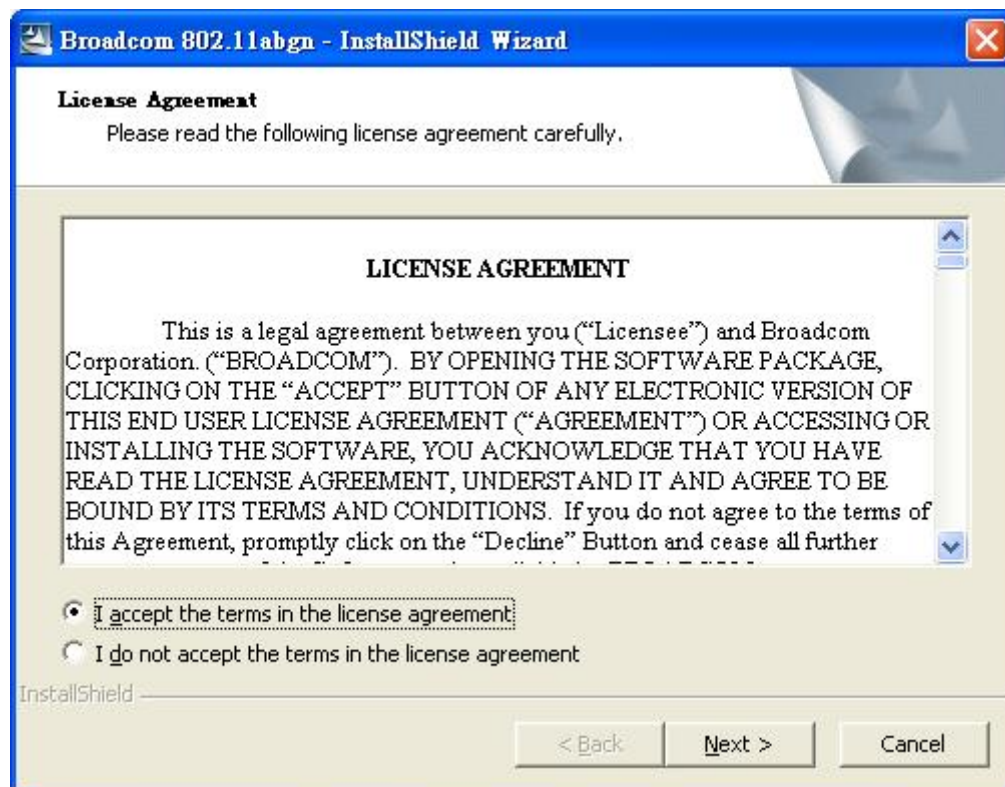
Install

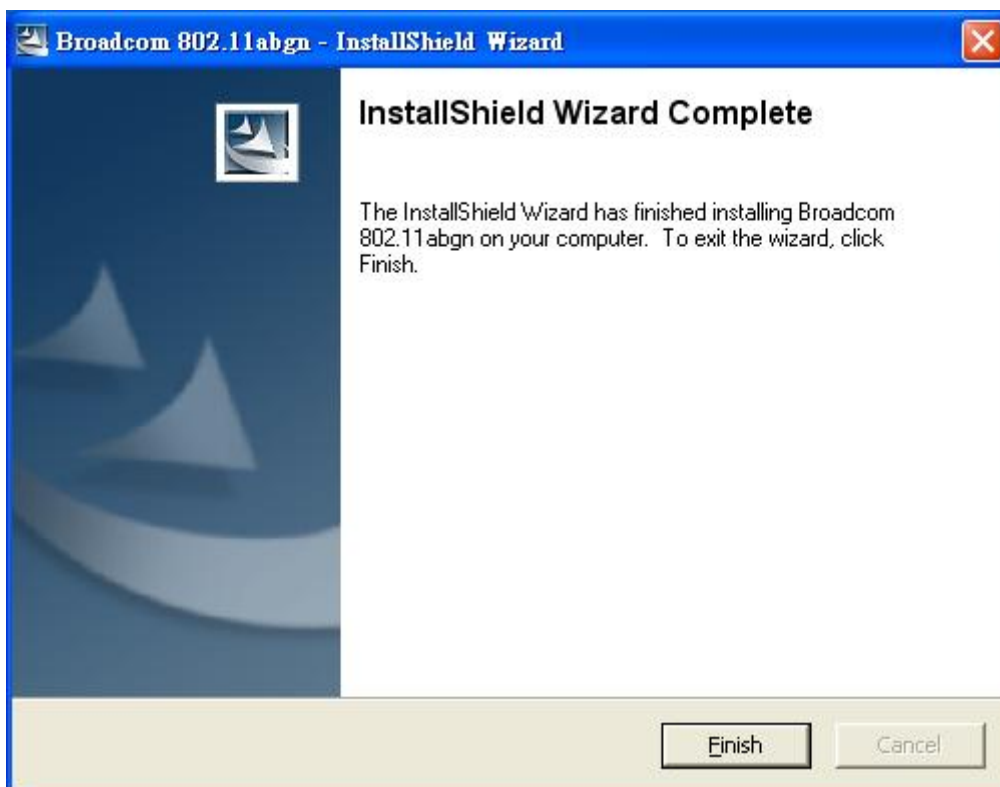
1. Executer “DNGL_REL_4_110_39_8_WIN_MFG_TEST.exe”



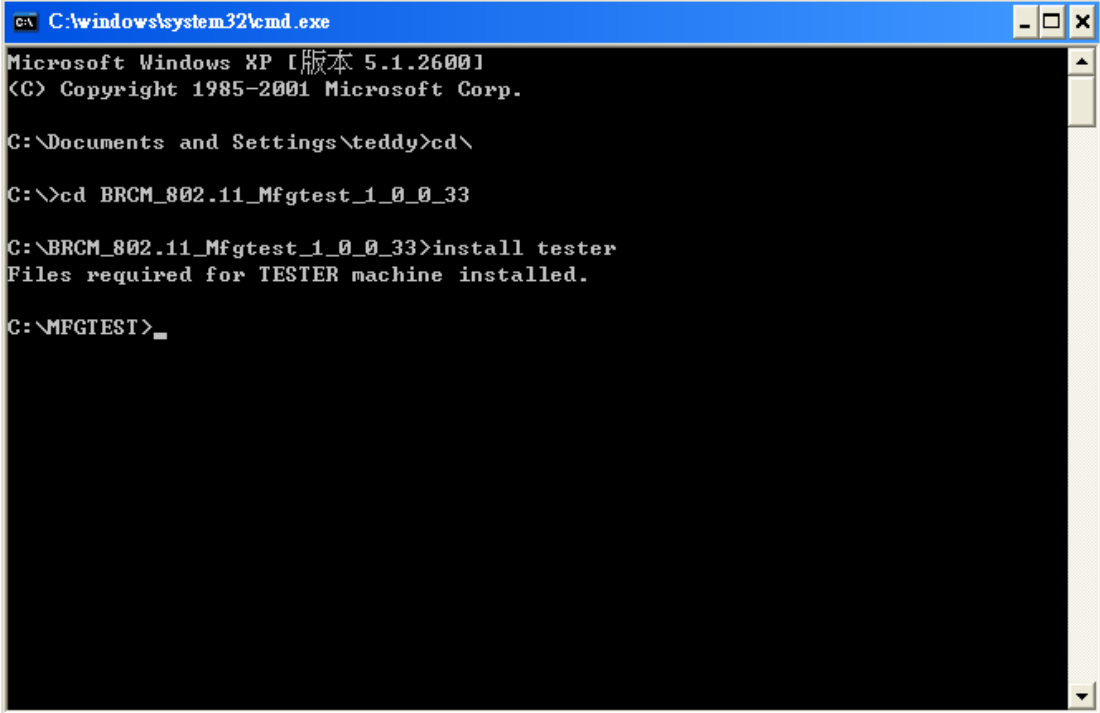


2. Execute "BRCM_802.11_Mfgtest_1_0_0_33.exe"





3. At DOS command mode, at folder “C:\BRCM_802.11_Mfgtest_1_0_0_33”, type “install tester”. It automatic goes to folder “C:\MFGTEST”



```
C:\windows\system32\cmd.exe
Microsoft Windows XP [版本 5.1.2600]
(C) Copyright 1985-2001 Microsoft Corp.

C:\Documents and Settings\teddy>cd\

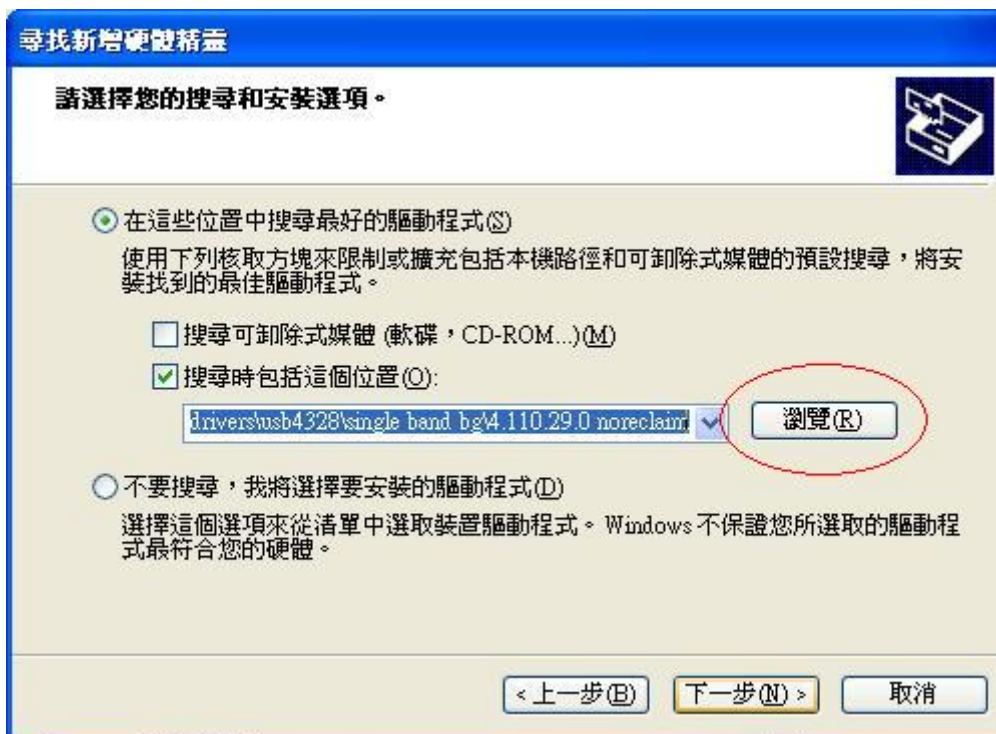
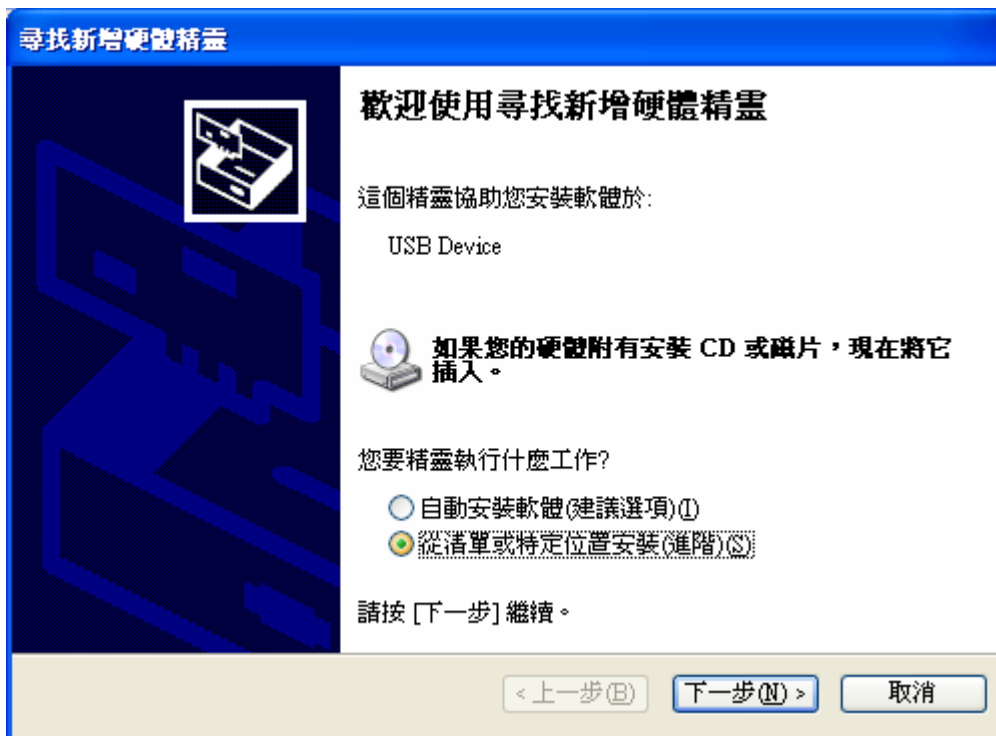
C:\>cd BRCM_802.11_Mfgtest_1_0_0_33

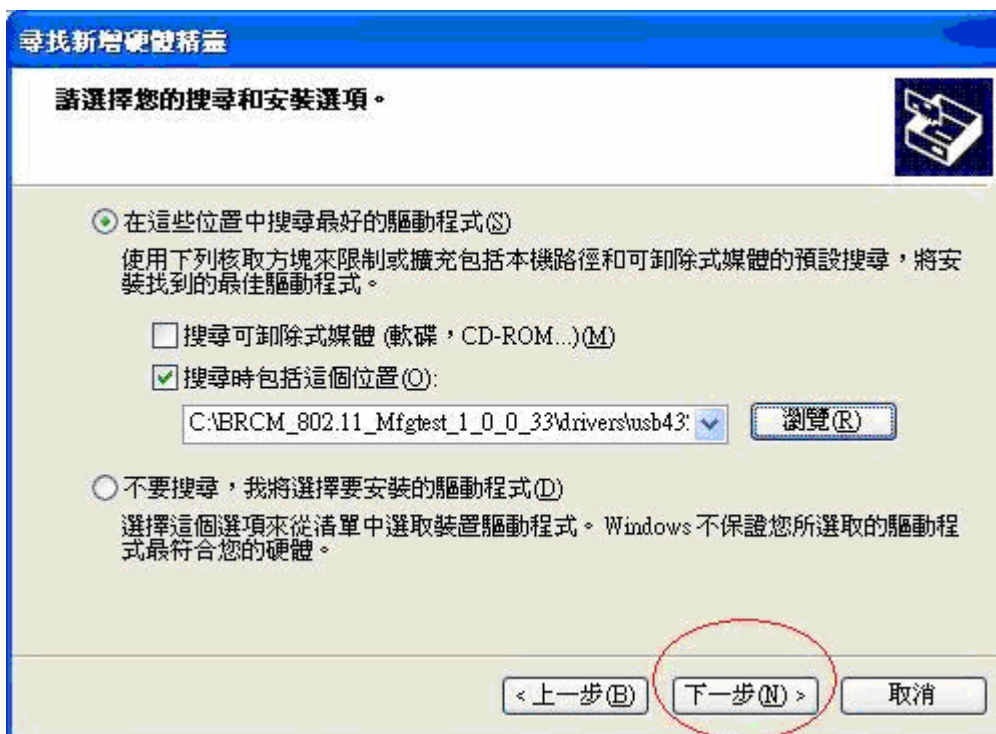
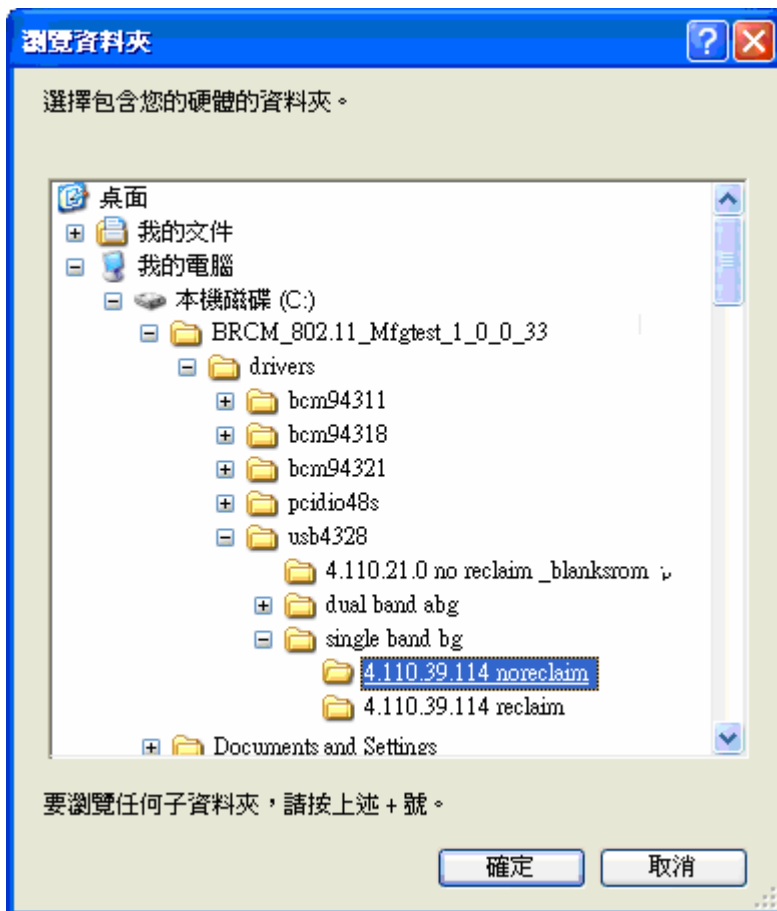
C:\BRCM_802.11_Mfgtest_1_0_0_33>install tester
Files required for TESTER machine installed.

C:\MFGTEST>_
```

Copy the “txg.bat” file to “C:\MFGTEST” folder.

4. Connect WLU3072-D69(RoHS) sample and Windows will search new hard wizard automatic. Install first driver.





硬體安裝



您正要為這個硬體安裝的軟體:

BcmDl2.Sys 4328 USB Downloader ¹

尚未通過 Windows 標誌測試以確認它與 Windows XP 的相容性。(告訴我這項測試的重要性。)

繼續安裝這個軟體會在現在或將來，使您的系統操作不穩定或受損。Microsoft 強烈建議您立即停止這項安裝，並連絡硬體廠商索取已通過 Windows 標誌測試的軟體。

繼續安裝(C)

停止安裝(S)

尋找新增硬體精靈



完成尋找新增硬體精靈

這個精靈安裝了軟體於:

BcmDl2.Sys 4328 USB Downloader ¹

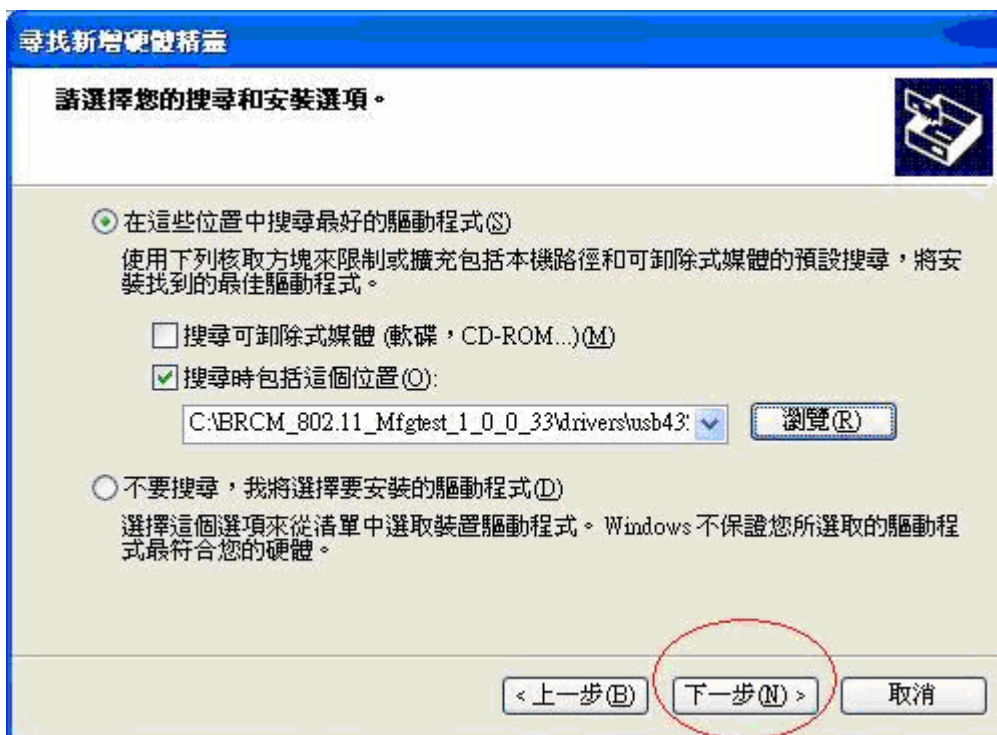
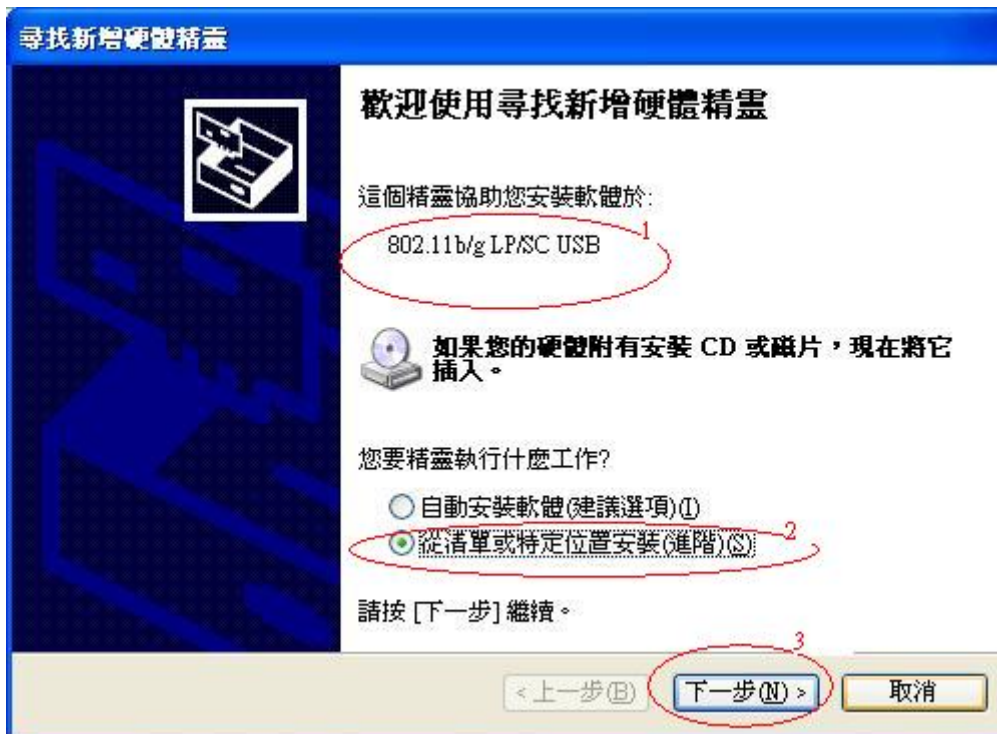
按 [完成] 關閉精靈。

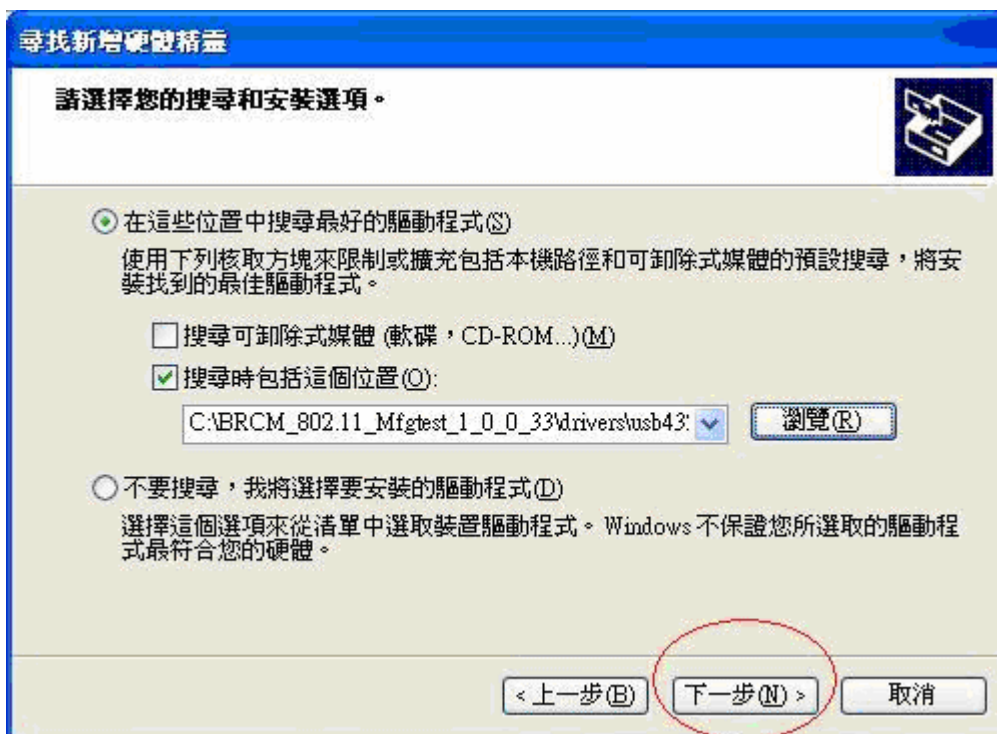
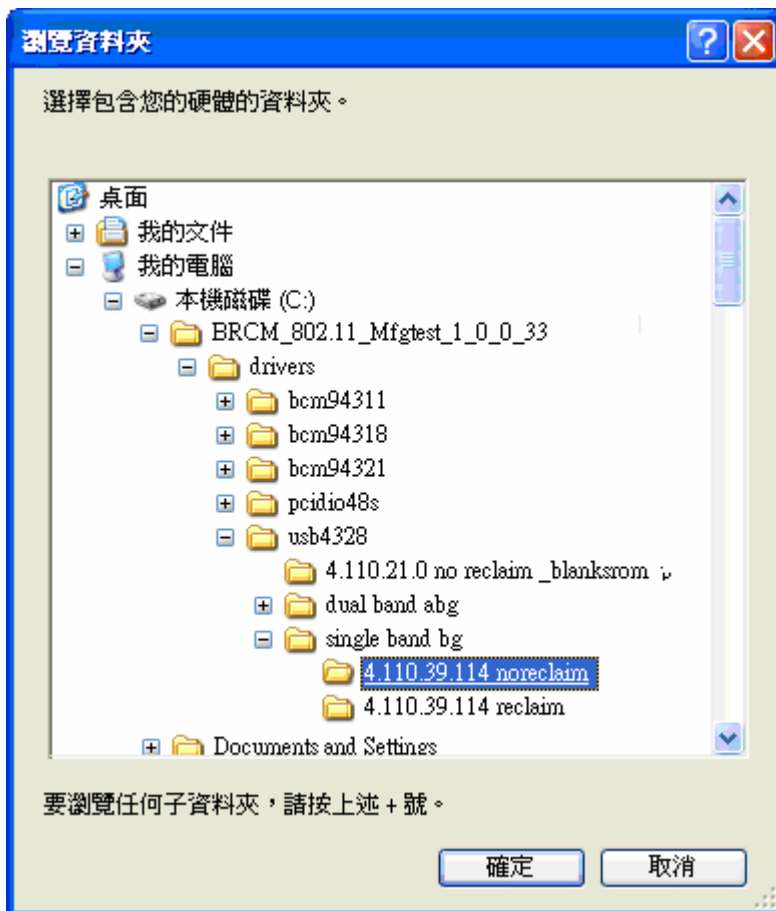
< 上一步(B)

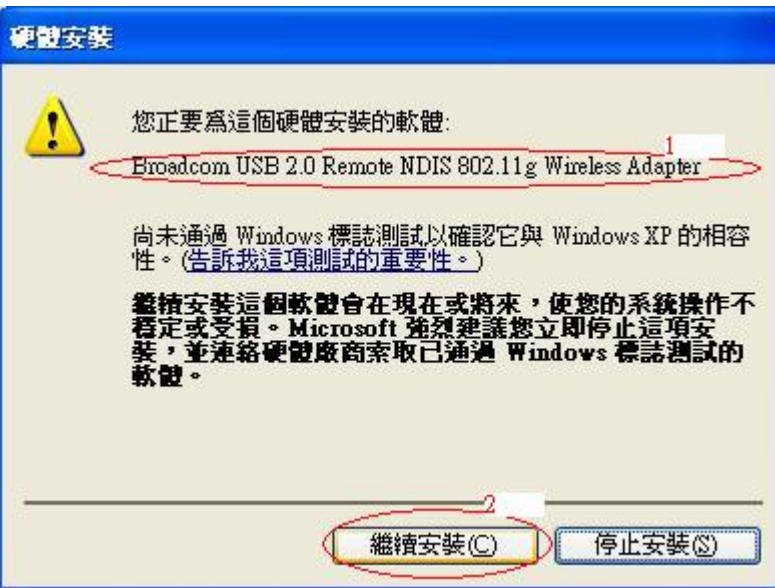
完成 ²

取消

5. Install second driver automatic.

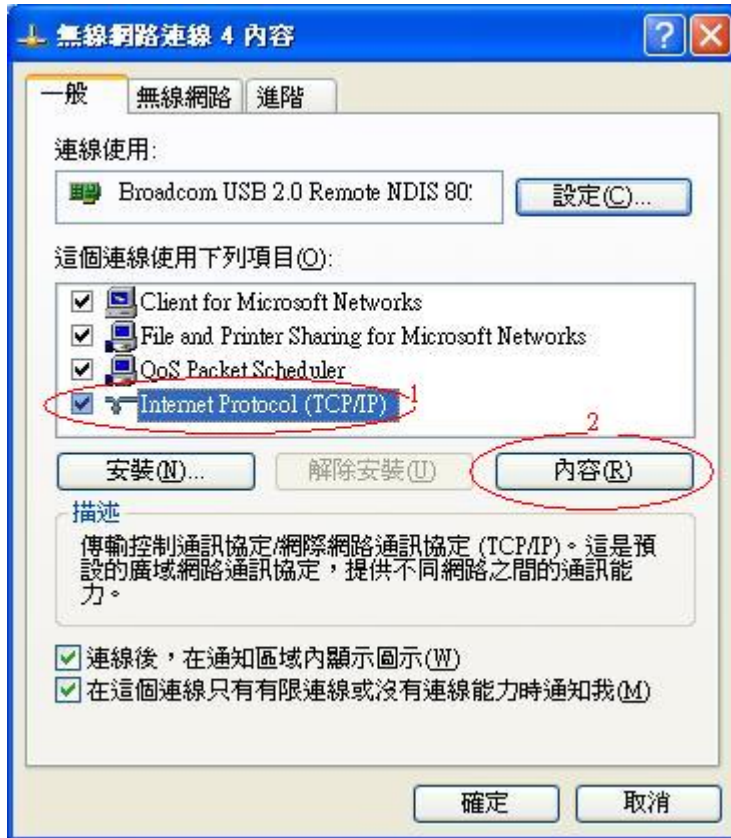


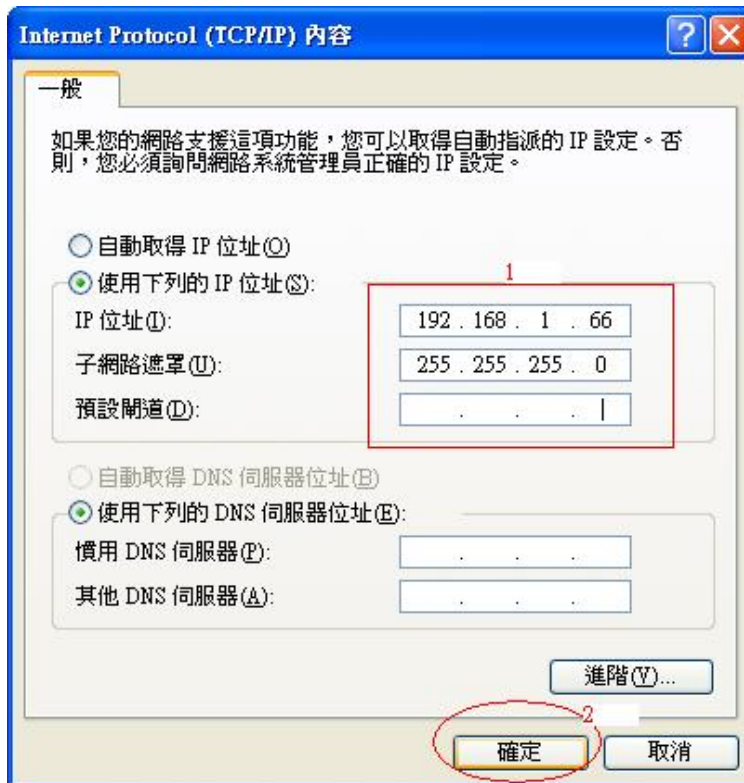




Setup TCP/IP

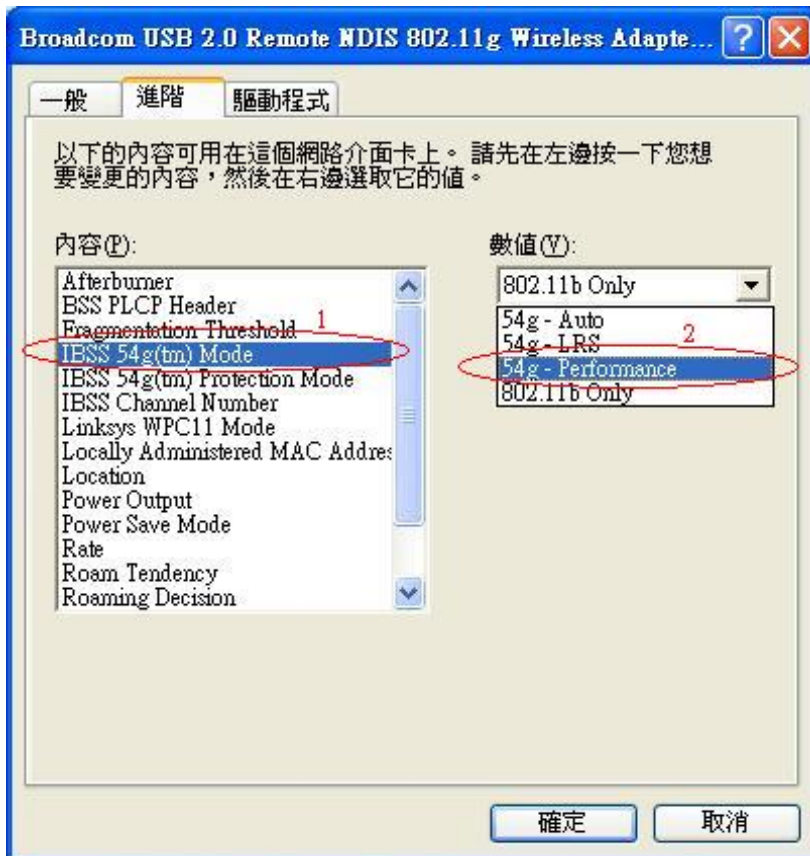
1. Set the Wireless LAN Internet Protocol (TCP/IP)
IP: 192.168.1.66 (2~254 as your wish to key in)
Mask: 255.255.255.0



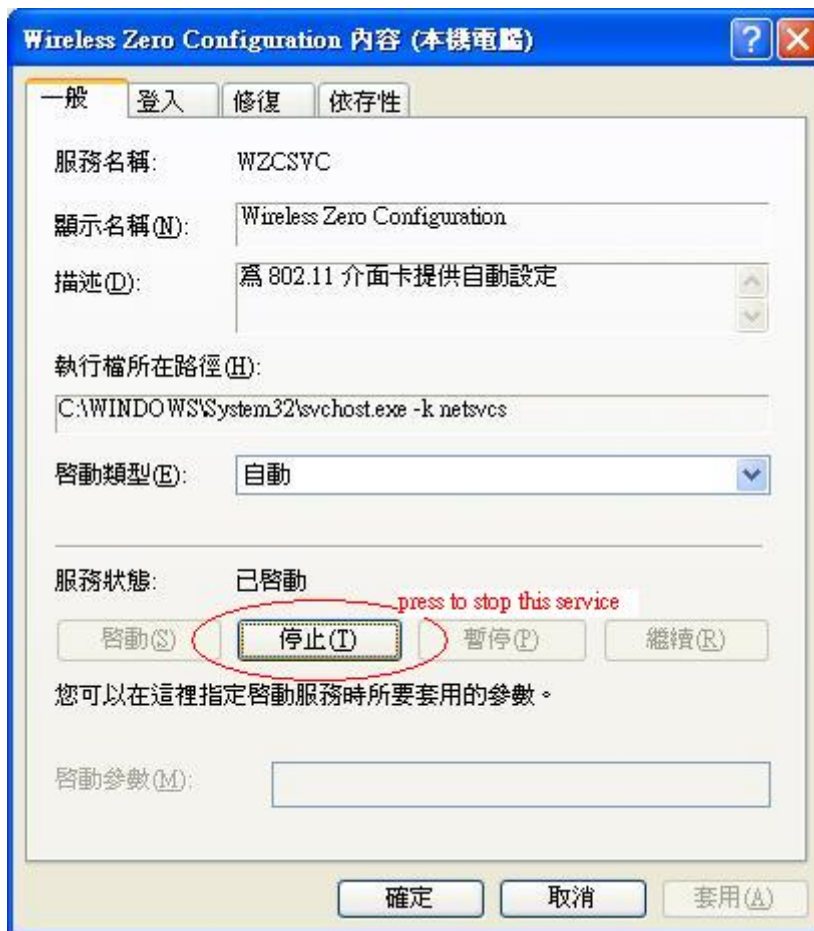
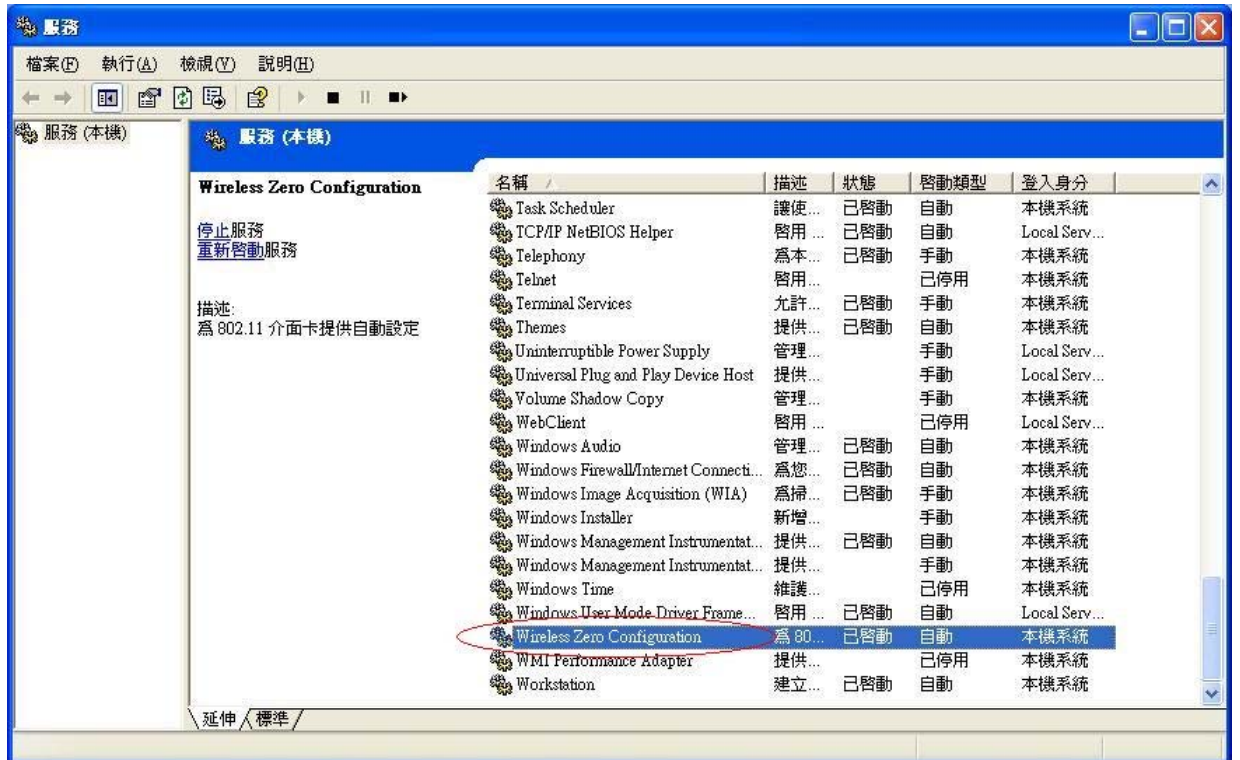


2. IBSS54g(tm) Mode: 54g – Performance



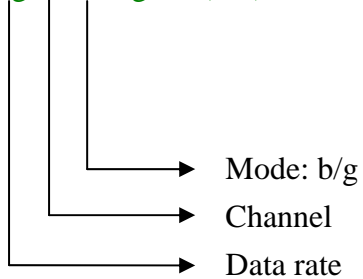


3. Stop Windows Zero Configuration service



Instruction

1. txg 54 1 54g (TX)



Example:

11b, ch1, 1Mbps: txg 1 1 11b

11b, ch7, 11Mbps: txg 11 7 11b

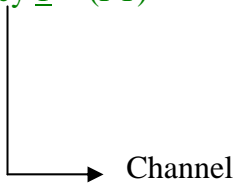
11g, ch1, 54Mbps: txg 54 1 54g

11g, ch11, 6Mbps: txg 6 11 6g

(ctrl+c : break continuous transmitter)

2. wl out (RX)

3. wl fqacurcy 1 (FT)



Example:

ch1: wl fqacurcy 1

ch7: wl fqacurcy 7

ch11: wl fqacurcy 11

4. wl fqacurcy 0



PS.

1. If the channel doesn't change well, please execute all instruction then interrupt it.
And re-execute again.
2. If Single carrier can't set ON, please type in "wl out" first then type in "wl fqacurcy CHANNEL".

Actual instruction step:

txg 11 1 11b

wl out

wl fqacurcy 1

wl fqacurcy 0

txg 54 11 54g

wl out

wl fqacurcy 11

wl fqacurcy 0

...

...

Federal Communication Commission Interference Statement

This equipment has been tested and found to comply with the limits for a Class B digital device, pursuant to Part 15 of the FCC Rules. These limits are designed to provide reasonable protection against harmful interference in a residential installation. This equipment generates, uses and can radiate radio frequency energy and, if not installed and used in accordance with the instructions, may cause harmful interference to radio communications. However, there is no guarantee that interference will not occur in a particular installation. If this equipment does cause harmful interference to radio or television reception, which can be determined by turning the equipment off and on, the user is encouraged to try to correct the interference by one of the following measures:

- Reorient or relocate the receiving antenna.
- Increase the separation between the equipment and receiver.
- Connect the equipment into an outlet on a circuit different from that to which the receiver is connected.
- Consult the dealer or an experienced radio/TV technician for help.

FCC Caution: Any changes or modifications not expressly approved by the party responsible for compliance could void the user's authority to operate this equipment.

This device complies with Part 15 of the FCC Rules. Operation is subject to the following two conditions: (1) This device may not cause harmful interference, and (2) this device must accept any interference received, including interference that may cause undesired operation.

IMPORTANT NOTE:

FCC Radiation Exposure Statement:

This equipment complies with FCC radiation exposure limits set forth for an uncontrolled environment. This equipment should be installed and operated with minimum distance 20cm between the radiator & your body.

This transmitter must not be co-located or operating in conjunction with any other antenna or transmitter.

IEEE 802.11b or 802.11g operation of this product in the U.S.A. is firmware-limited to channels 1 through 11.

This device is intended only for OEM integrators under the following conditions:

- 1) The antenna must be installed such that 20 cm is maintained between the antenna and users, and
- 2) The transmitter module may not be co-located with any other transmitter or antenna,
- 3) For all products market in US, OEM has to limit the operation channels in CH1 to CH11 for 2.4G band by supplied firmware programming tool. OEM shall not supply any tool or info to the end-user regarding to Regulatory Domain change.

As long as 3 conditions above are met, further transmitter test will not be required. However, the OEM integrator is still responsible for testing their end-product for any additional compliance requirements required with this module installed (for example, digital device emissions, PC peripheral requirements etc.).

IMPORTANT NOTE: In the event that these conditions can not be met (for example certain laptop configurations or co-location with another transmitter), then the FCC authorization is no longer considered valid and the FCC ID can not be used on the final product. In these circumstances, the OEM integrator will be responsible for re-evaluating the end product (including the transmitter) and obtaining a separate FCC authorization.

End Product Labeling

This transmitter module is authorized only for use in device where the antenna may be installed such that 20 cm may be maintained between the antenna and users. The final end product must be labeled in a visible area with the following: "Contains FCC ID: BKMFBWLU3072".

Manual Information To the End User

The OEM integrator has to be aware not to provide information to the end user regarding how to install or remove this RF module in the user's manual of the end product which integrates this module.

The end user manual shall include all required regulatory information/warning as show in this manual.

Canadian Regulatory Wireless Notice

This device complies with RSS-210 of the Industry Canada Rules. Operation is subject to the following two conditions:

- 1) this device may not cause interference and
- 2) this device must accept any interference, including interference that may cause undesired operation of the device

IMPORTANT NOTE:

IC Radiation Exposure Statement:

This equipment complies with IC radiation exposure limits set forth for an uncontrolled environment. This equipment should be installed and operated with minimum distance 20cm between the radiator and your body.

This device is intended only for OEM integrators under the following conditions:

- 1) The antenna must be installed such that 20 cm is maintained between the antenna and users, and
- 2) The transmitter module may not be co-located with any other transmitter or antenna,
- 3) For all products market in Canada, OEM has to limit the operation channels in CH1 to CH11 for 2.4G band by supplied firmware programming tool. OEM shall not supply any tool or info to the end-user regarding to Regulatory Domain change.

As long as 3 conditions above are met, further transmitter test will not be required. However, the OEM integrator is still responsible for testing their end-product for any additional compliance requirements required with this module installed (for example, digital device emissions, PC peripheral requirements etc.).

End Product Labeling

This transmitter module is authorized only for use in device where the antenna may be installed such that 20 cm may be maintained between the antenna and users. The final end product must be labeled in a visible area with the following: "Contains IC: 1052C-WLU3072".

Manual Information To the End User


The OEM integrator has to be aware not to provide information to the end user regarding how to install or remove this RF module in the user's manual of the end product which integrates this module.

The end user manual shall include all required regulatory information/warning as show in this manual.

For NCC 警語

- ✘ 經型式認證合格之低功率射頻電機，非經許可，公司、商號或使用者均不得擅自變更頻率、加大功率或變更原設計之特性及功能。
- ✘ 低功率射頻電機之使用不得影響飛航安全及干擾合法通信；經發現有干擾現象時，應立即停用，並改善至無干擾時方得繼續使用。前項合法通信，指依電信法規定作業之無線電通信。低功率射頻電機須忍受合法通信或工業、科學及醫療用電波輻射性電機設備之干擾。

Note:

1. 本模組於取得認證後將依規定於模組本體標示審驗合格標籤
2. 系統廠商應於平台上標示「本產品內含射頻模組：XXXyyyLPDzzzz-x」字樣