

SE_NOR

tPOS

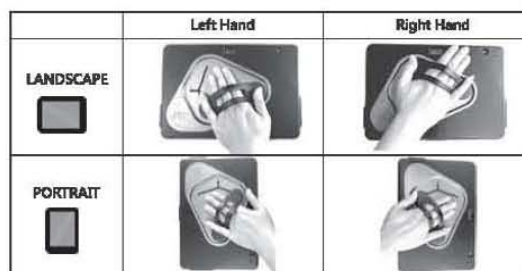
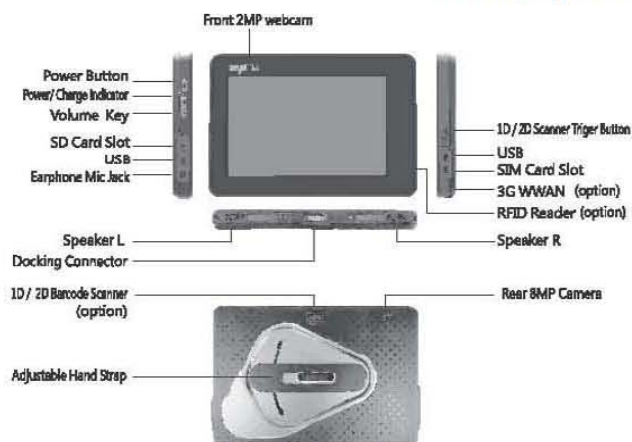
Quick Reference Guide

SE_NOR TECH CO., LTD.

<http://www.senortech.com>

FUNTIONALITIES

Date:01 / 30 / 2018



~ 1 ~

OPTIONAL DOCKING STATION

Date:01 / 30 / 2018



Battery Charger

DC 5V 3A
USB Port

Desk Docking

Wall Mount Docking



Desk Dock

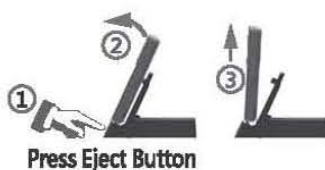
Wall Mount Dock

1	1	4	1	1

1	4	1	1	1



Eject Button

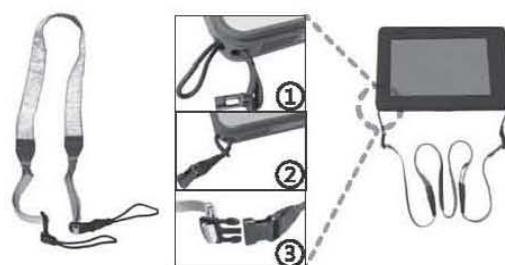


~ 2 ~

OPTIONAL PERIPHERALS

Date:01 / 30 / 2018

NECK STRAP



~ 3 ~

Important Product and Safety information

1. Do not disassemble the device. It may damage the device, and void the warranty.
2. Operate the device in a place where temperature is between 0°C and +40°C.
3. Protect your device from water and moisture intake. Keep connector covers closed when not in use to prevent water and moisture intake.
4. Use only soft and dry lint-free cloth to clean the device.
5. Use only the power charger delivered with the device.
6. Do not use damaged power cords or plugs.
7. Save energy by doing following.
 - Reduce screen brightness and sound volume.
 - Close any applications and data connections that are not being used.
 - Disconnect any peripherals from the device if they are not used.
 - Unplug the charger from the electrical outlet when it is not used.
8. The device contains replaceable battery. There is risk of explosion if battery is replaced by an incorrect type.

9.



Listening to the device at high volume levels for long periods may cause hearing damage.

Regulatory Information

FCC Information

FCC Compliance:

This equipment has been tested and found to comply with the limits for a Class A digital device, pursuant to part 15 of the FCC Rules. These limits are designed to provide reasonable protection against harmful interference when the equipment is operated in a commercial environment. This equipment generates, uses, and can radiate radio frequency energy and, if not installed and used in accordance with the instruction manual, may cause harmful interference to radio communications. Operation of this equipment in a residential area is likely to cause harmful interference in which case the user will be required to correct the interference at his own expense.

FCC Conditions:

This device complies with PART 15 of the FCC Rules. Operation is subject to following two conditions:

- 1 This device may not cause harmful interference, and
- 2 This device must accept any interference received, including interference that may cause undesired operation.

FCC – RF Radiation Exposure Statement:

This equipment complies with FCC radiation exposure limits set forth for an uncontrolled environment. End users must follow the specific operating instructions for satisfying RF exposure compliance. This transmitter must not be co-located or operation in conjunction with any other antenna or transmitter.

- The highest SAR value for this device is 0.199 W/kg.

FCC Caution: Any changes or modifications not expressly approved by the party responsible for compliance could void the user's authority to operate this equipment.

WEEE Directive Compliance Statement



2012/19/EU (WEEE directive): Products marked with this symbol cannot be disposed of as unsorted municipal waste in the European Union. For proper recycling, return this product to your local supplier upon the purchase of equivalent new equipment, or dispose of it at designated collection points. For more information see:

www.recyclethis.info