

1.6 User Manual

TABLE OF CONTENTS

- [1. Meet your Sensibo](#)
- [2. What's in the box?](#)
- [3. Installation](#)
- [4. The Sensibo App](#)
- [5. General maintenance](#)
- [6. Safety](#)

MEET YOUR SENSIBO

Sensibo is a retrofit device that makes any existing remote controlled air conditioner smart. Sensibo connects the air conditioner to the internet, allowing you to control it from anywhere using your smartphone. Sensibo is equipped with many sensors that allow it to determine the optimal climate for your home, adapt to your habits and save energy.

Sensibo comes with a free smartphone application for iOS and Android.




You can download the apps at:



sensibo.com/android

sensibo.com/ios

INSIDE THE BOX

Inside the box you will find two packages:

SMART HUB PACKAGE	
	Smart Hub
	Power Adapter
	Ethernet cable

SENSIBO POD PACKAGE	
	Sensibo Pod
	2 x CR123A Batteries
	2 extra Command™ adhesive tapes

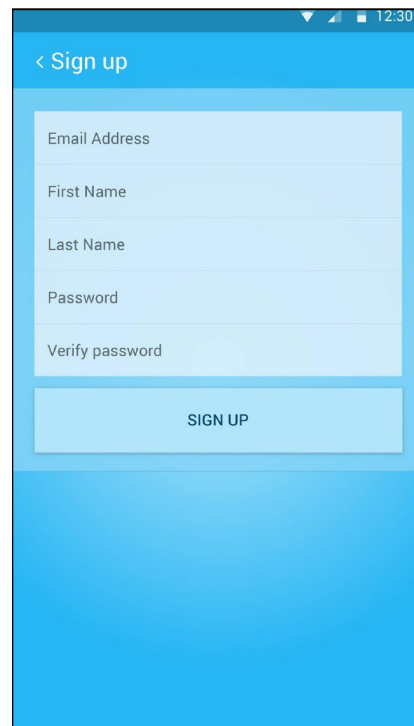
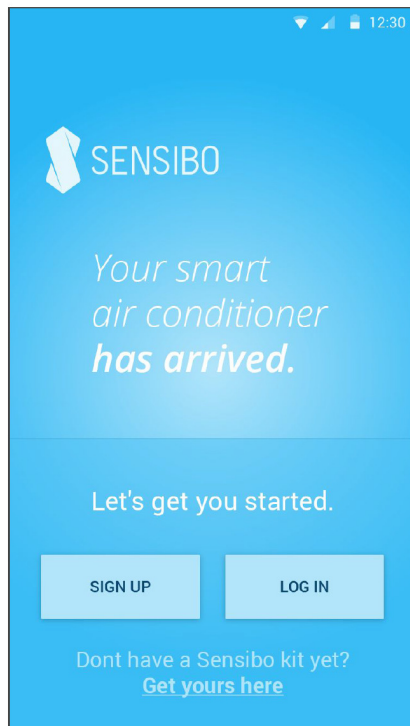
INSTALLATION INSTRUCTIONS

The Sensibo app will guide you in the installation process through a wizard.

Log In or Sign Up

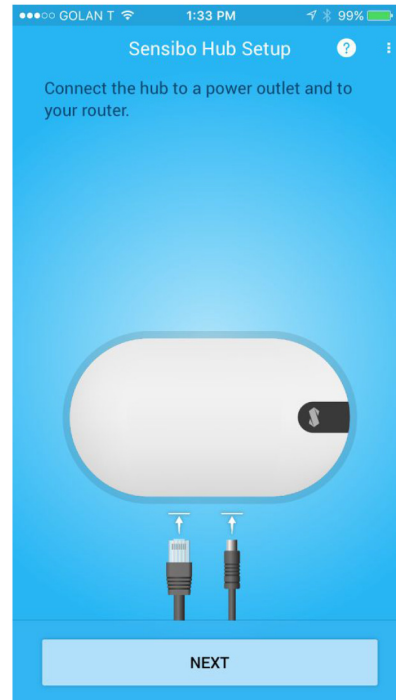
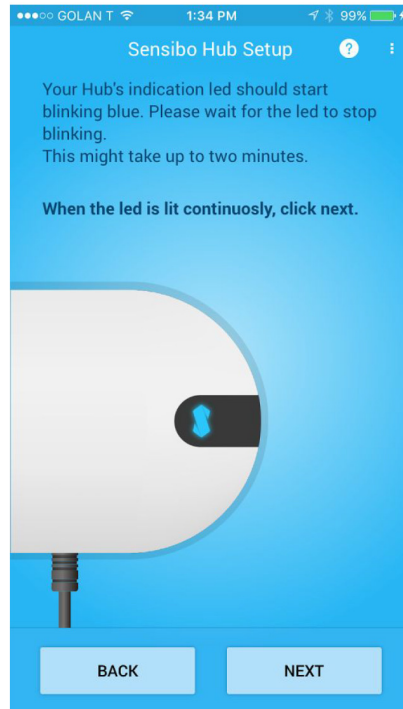
If this is the first time you use Sensibo, you will need to register for a user account. Press the sign up button and enter a username a password.

If you already have an account, press login and enter your existing username and password.



Install the smart Hub

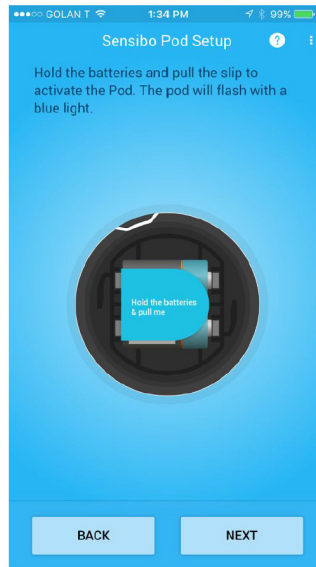
1. Plug the smart Hub into the outlet.
Make sure the power outlet is safely installed and fits the specified voltage ratings. Only use the supplied power adapter.
2. The LED will blink in red, green and then blue. After approximately 30 seconds, the Hub's blue light will stop blinking and the LED have a steady blue light.
3. Connect one end of the supplied Ethernet cable to one of the LAN connections in your home router and the second end to the Sensibo Hub.



Install your Sensibo Pod

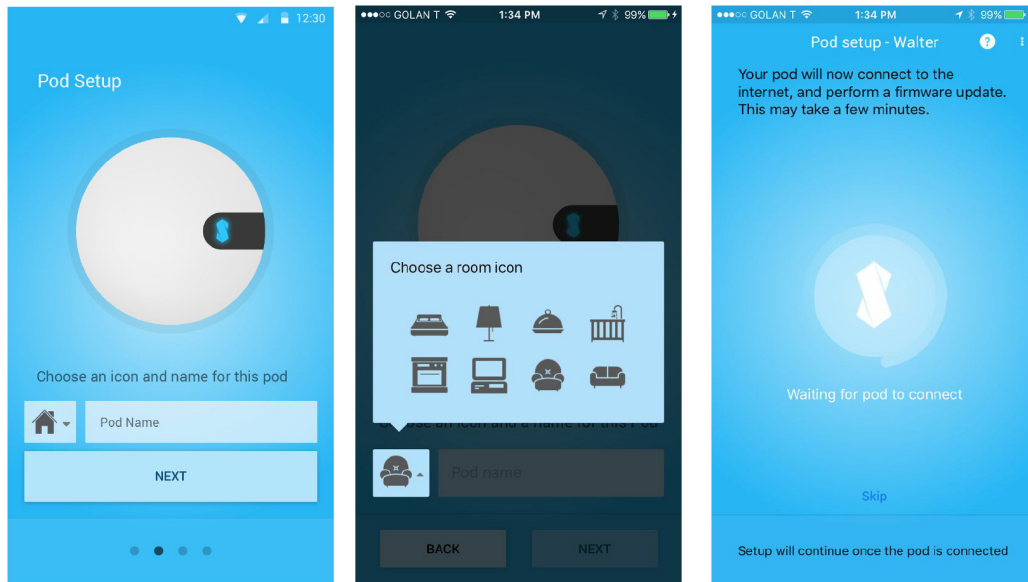
Stage 1

Open the Pod's battery compartment and scan the QR code in the back of the Pod.



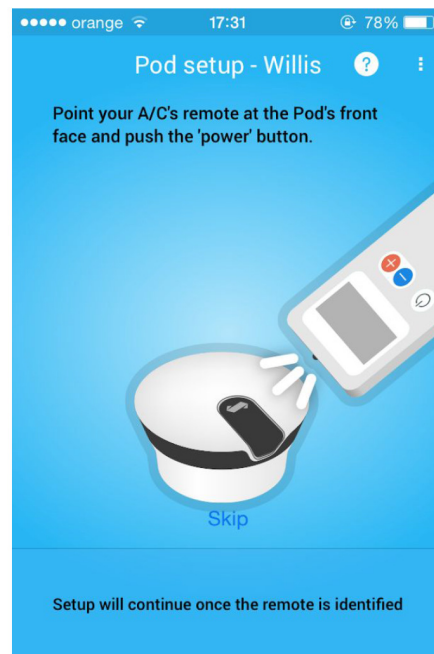
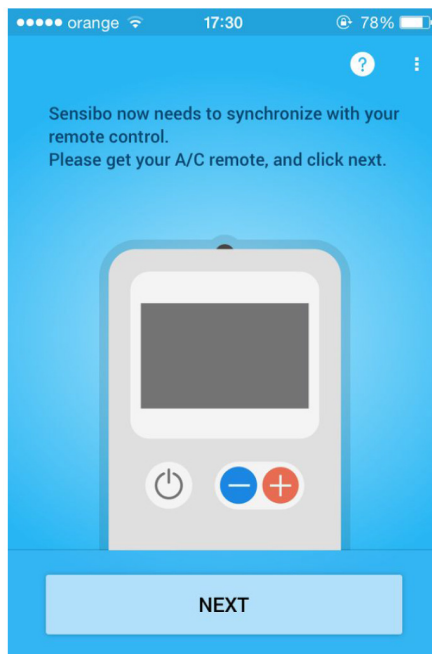
Stage 2

Choose a name and icon for your Pod. The recommended name is the room in which the Pod is located (e.g. Living Room, Bedroom, etc.) as well as a suitable icon.



Stage 3

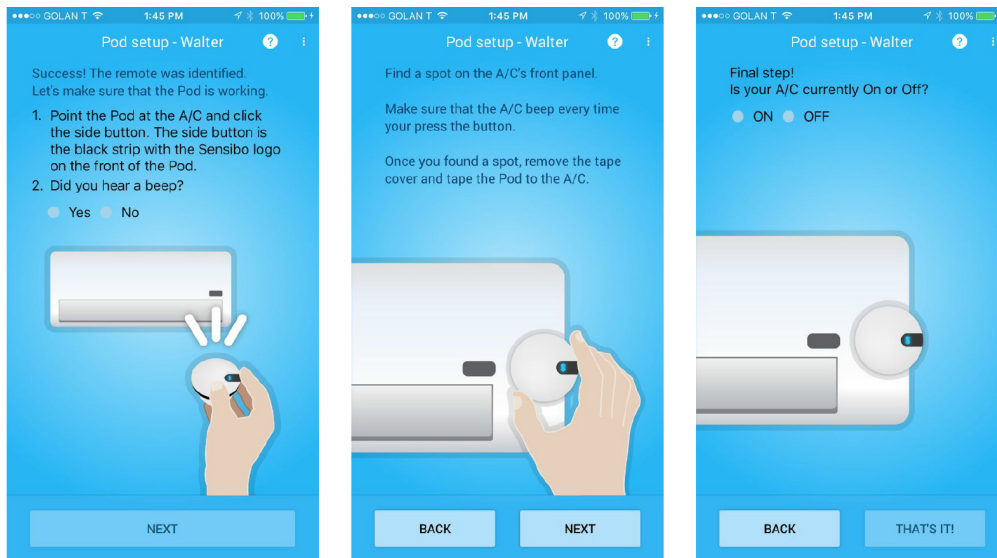
Sensibo comes with an automatic identification process for your air conditioner. You will be asked to press the on/off button on your remote control, pointing it to your Sensibo Pod.



Stage 4

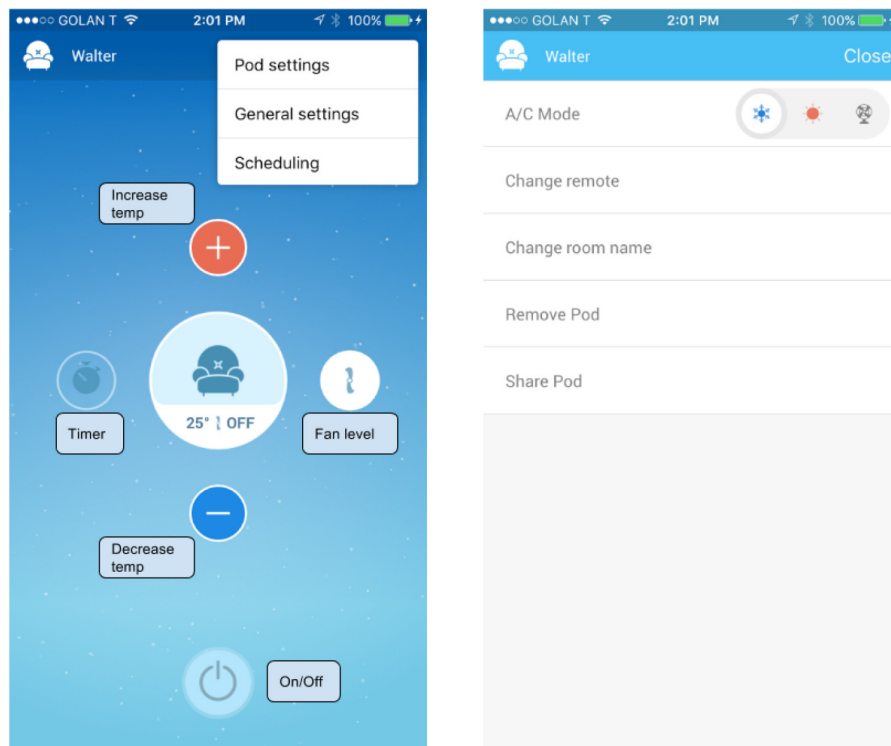
Place the Sensibo Pod on top of your air conditioner unit.

The app will guide you where to place the Pod and how to ensure it'll stay in place - find a clean spot on your AC, make sure the Pod can communicate well with the AC from that area, peel the sticker cover and hold the Pod in place for 30 seconds.



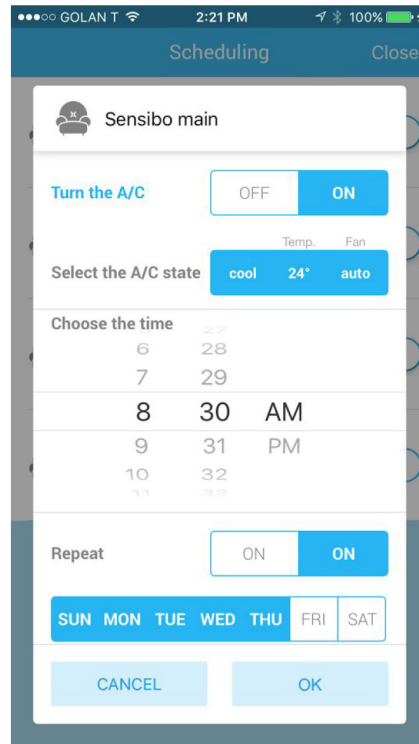
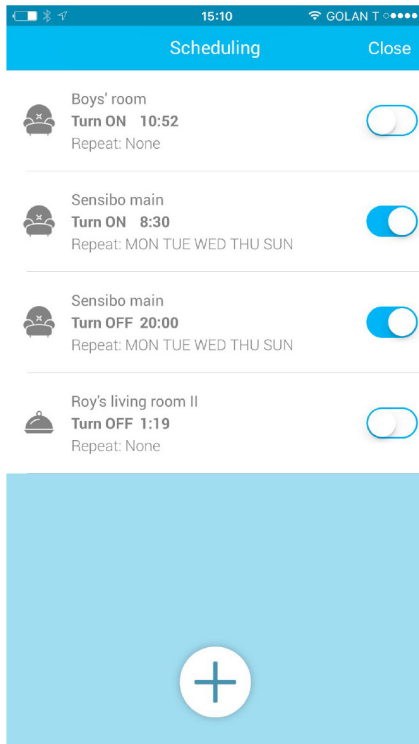
THE SENSIBO APP

The main screen of the Sensibo app shows information about the current temperature and humidity in the room and lets you control your air conditioner's settings such as fan level, mode, setting a timer etc.



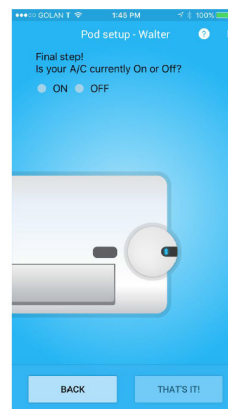
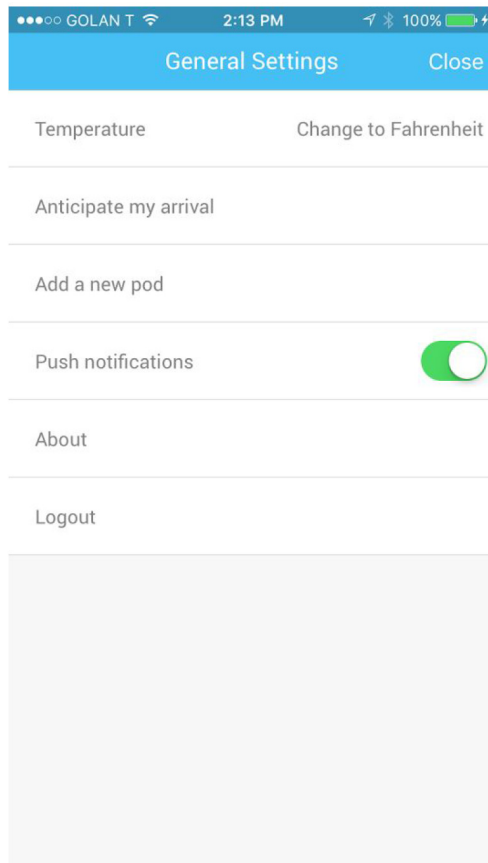
Scheduling

With Sensibo you can automate on/off commands for the AC - choose the desired action (on or off), AC state (heating, cooling or fan mode), goal temperature, fan level, when and should this rule repeat weekly (and on which days).



Adding a new Pod

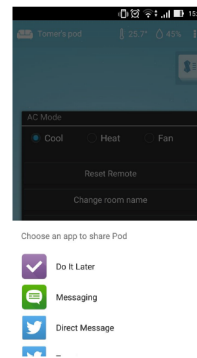
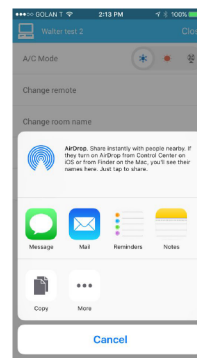
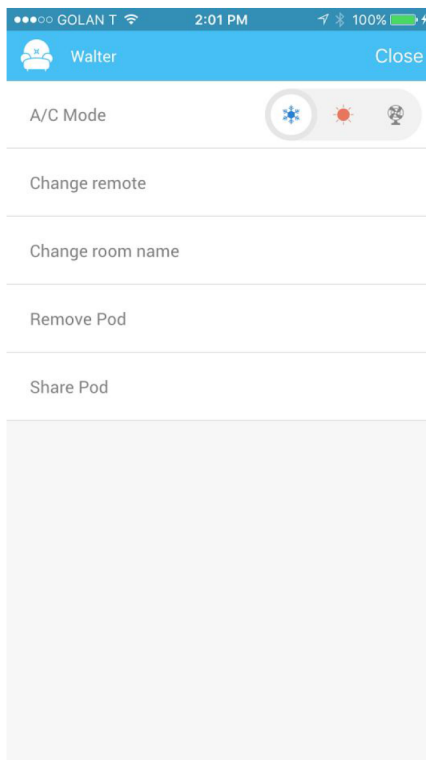
You can add setup a new Pod via the General Settings menu (accessible via the menu on the pof screen) - the app will guide you through the stages, starting from the QR scan.



Sharing the Pod with other users (family, friends, catsitter...)

You can share a Pod from your account with any other user that has the Sensibo app via email, instant messaging apps, etc.

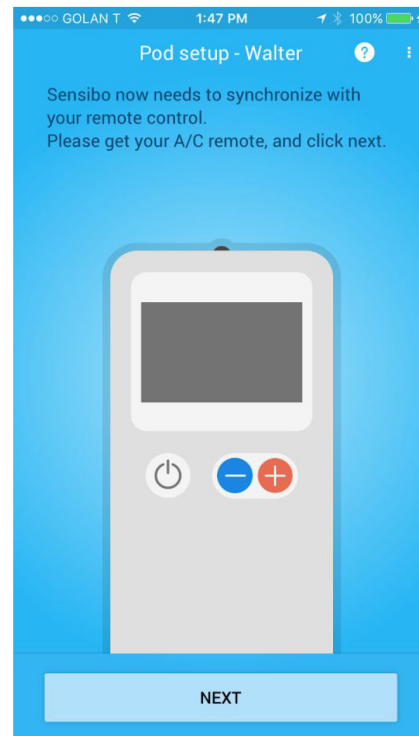
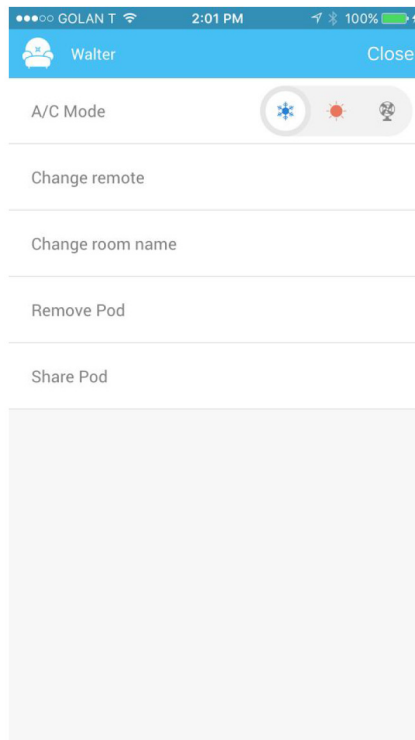
If the recipient does not have Sensibo installed, the invitation link will open the app's page in the suitable app market (following the link after installation will grant access to that user).



Reset Remote

Congratulations on your new home/buying a new AC!

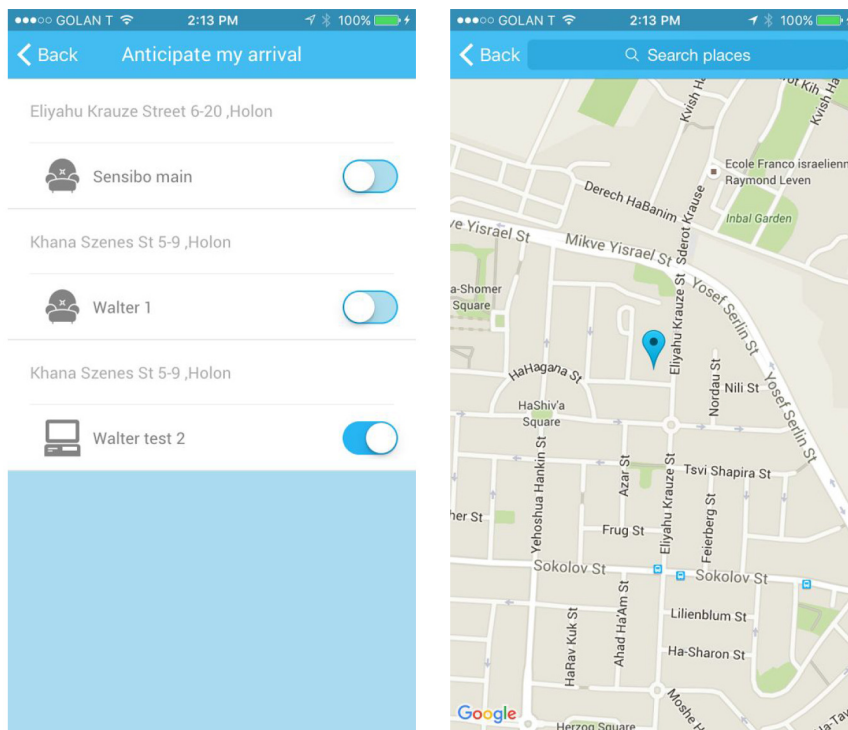
To pair your existing Pod with a different AC model, start the remote recognition process again - accessible via the Pod menu.



Anticipate My Arrival

You can set pods to automatically turn on when you approach the location (your house, office, etc.).

This feature requires location services to be on.



GENERAL MAINTENANCE

Sensibo doesn't need any special maintenance. With normal usage the batteries last between a year and three years. You will get a notification in the app when batteries need to be replaced.

SAFETY

1. Sensibo is FCC certified - FCC ID: 2AHCD-Hub-v01
This device complies with Part 15 of the FCC Rules. Operation is subject to the following two conditions: (1) this device may not cause harmful interference, and (2) this device must accept any interference received, including interference that may cause undesired operation.
Changes or modifications not expressly approved by the party responsible for compliance could void the user's authority to operate the equipment.
2. When connecting the smart Hub to the electricity, make sure the power outlet is safely installed and fits the specified voltage ratings. **Only use the supplied power adapter.**
3. When attaching the Pod to the air conditioner, make sure to press firmly for at least 30 seconds before leaving.
4. Attach the Pod only to a clean plastic surface and use only the supplied tape. In case you need more tape, please contact support@sensibo.com and we will be glad to help by sending you additional adhesive tapes.
5. Do not use the system in extreme conditions. Sensibo should be used in a home environment, with temperature ranging between 0°C and 40°C and humidity between 5% - 95%.
6. Air conditioners are often high and you may need a ladder to attach the Pod to the A/C unit. Make sure the ladder is stable and be extra careful to keep your balance. It is recommended to have another person while climbing a ladder.
7. Do not get the Sensibo Hub or Pod in contact with water. For cleaning, use dry cloth.