

# α Base Station User Manual

---

---

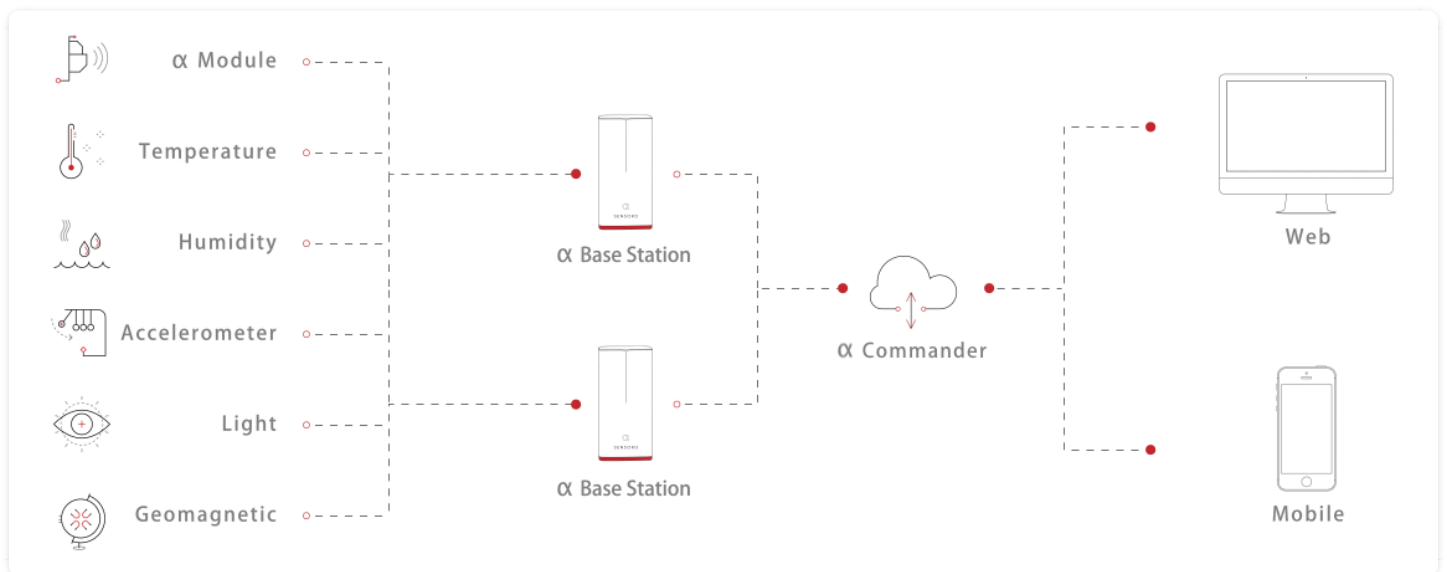


## Overview

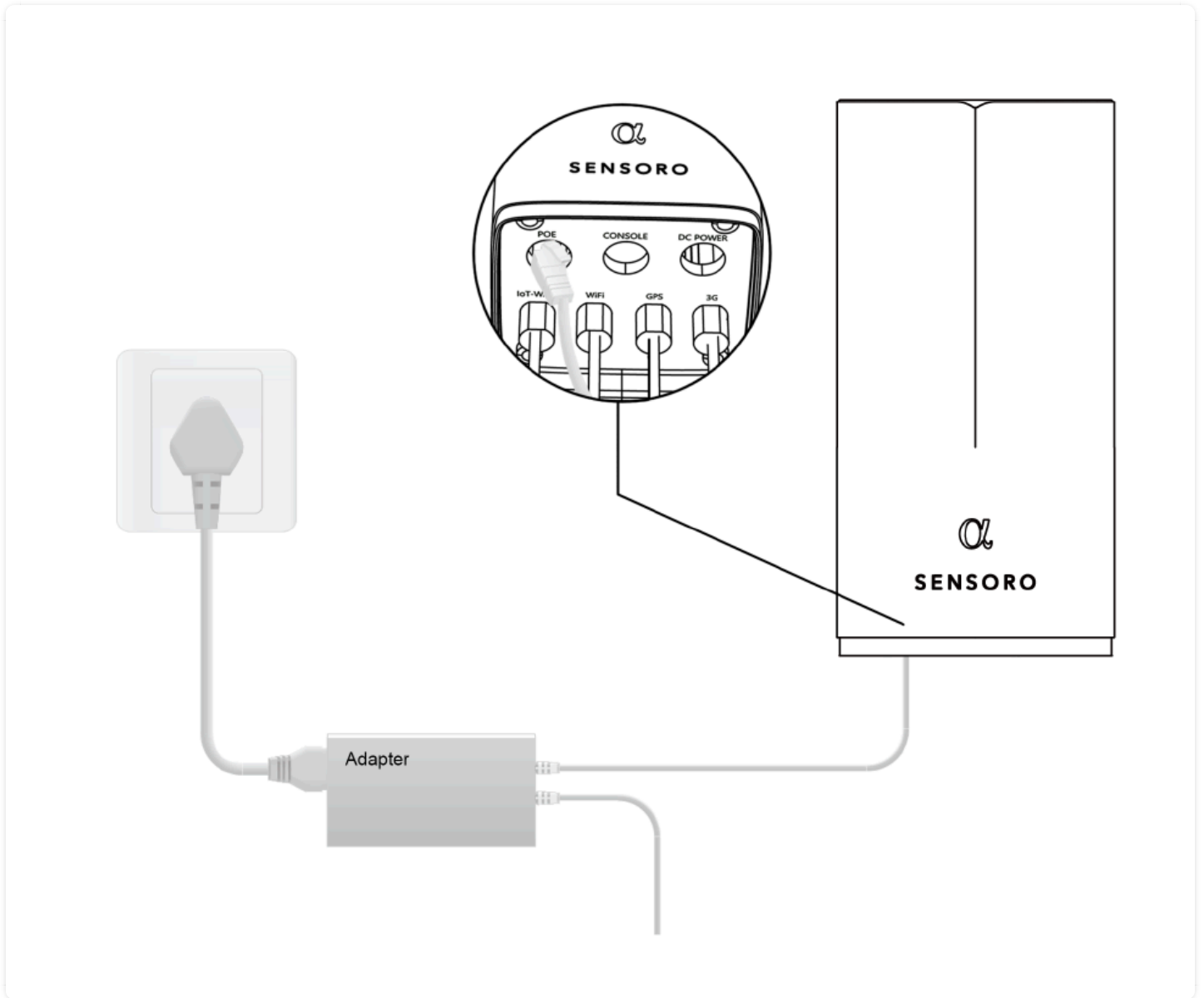
α Base Station is designed and built for outdoor IoT application scenes that require low power-consumption, long range and low throughput, hence capable of handling the data communication of a large-scale sensing network.

It supports multiple communication modes to servers (3G, Ethernet etc.) for flexibility to adapt to various scenes; multi-network hot backup is also available to improve reliability and stability in data communication.

## Operating Principles



## PoE Power Supply



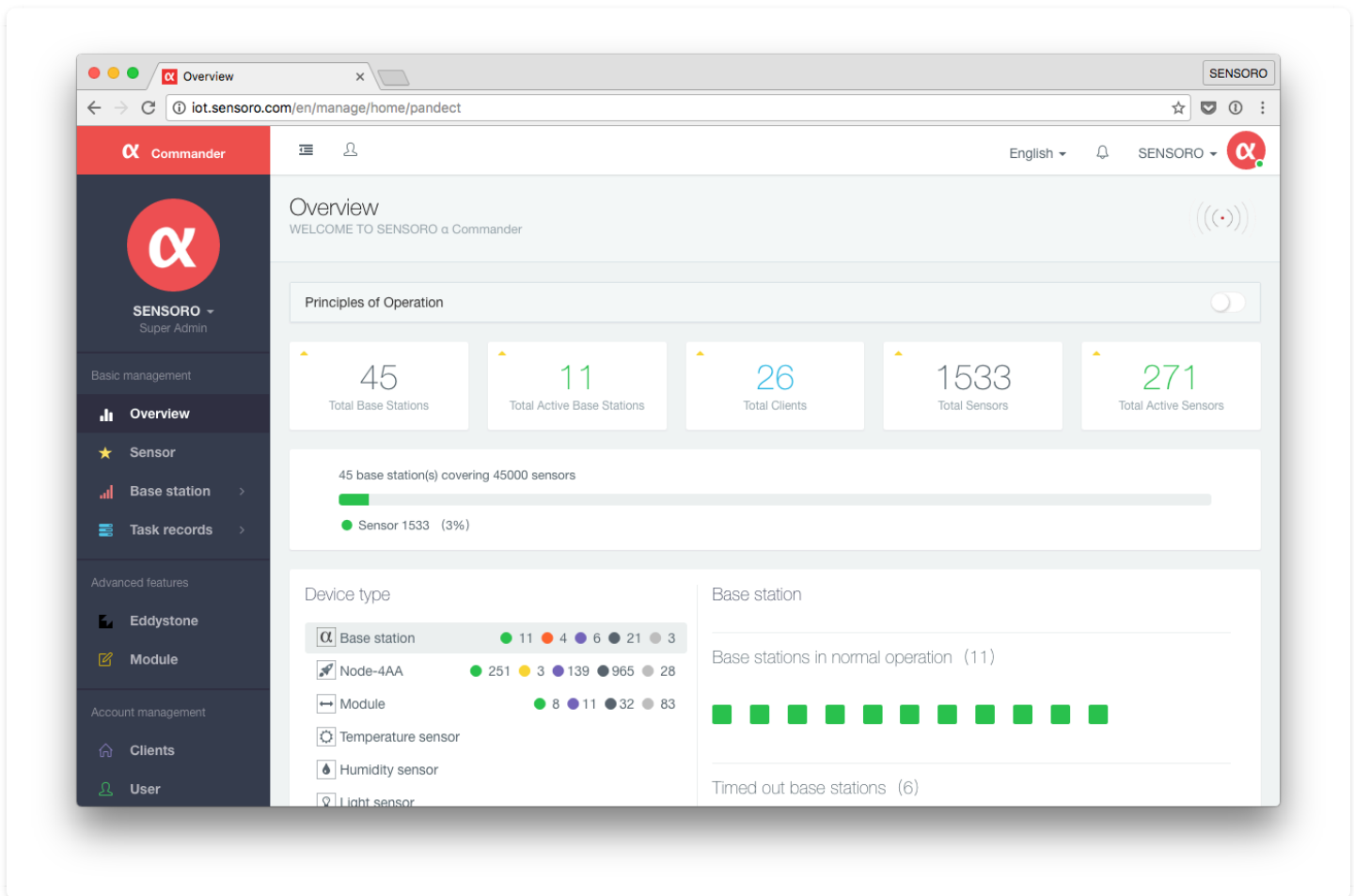
## Specifications

Property	Specifications
Dimensions	120mm x 120mm x 260mm
Weight	2.5kg
Material	Al 6063T
Interface	RJ45 x 1、 Console x 1、 Antenna N-Type Female Connector x 4
LED	1
Network	3G、 Ethernet
Power	Power over Ethernet (PoE) (802.3af) <13W
Operating Environment	-40°C~+65°C 5%RH~90%RH -60m~3000m (But the POE Adapter only use for 0°C~+40°C)

Storage Environment	-40°C~+80°C 5%RH~90%RH
IP Grade	IP67
Wind resistance	165MPH
Atmospheric pressure	53kPa~106kPa

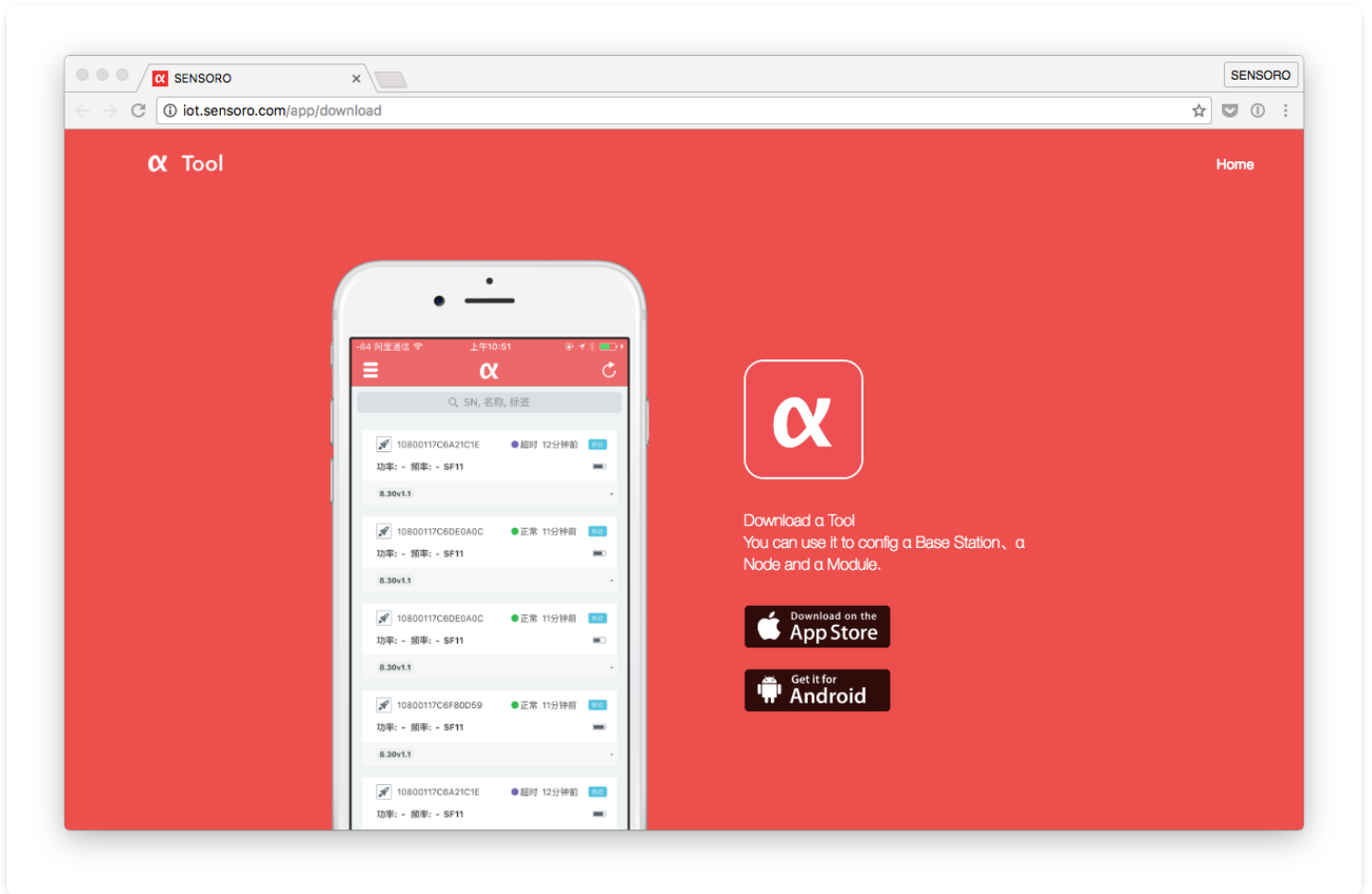
The socket-outlet shall be installed near the equipment and shall be easily accessible. The product is designed for IT power distribution system with phase-to-phase voltage 230V.

## α Commander



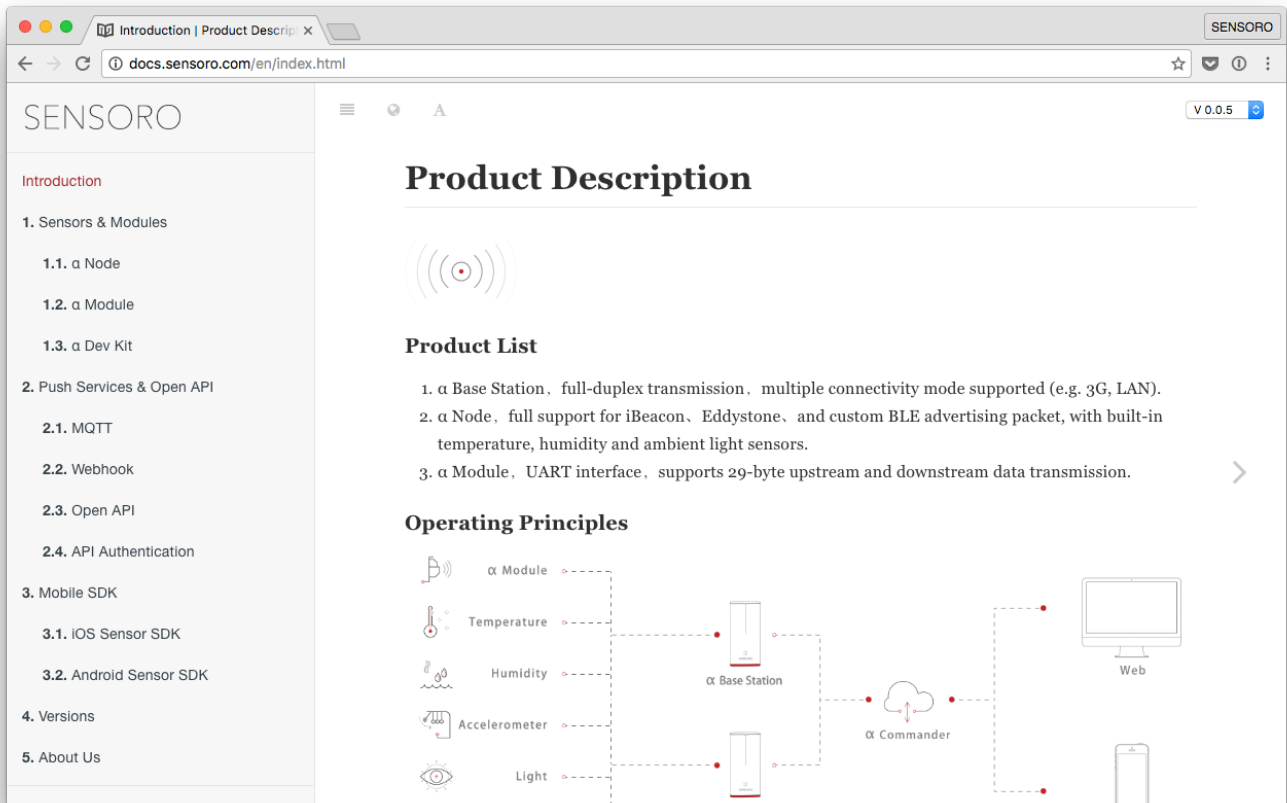
<http://iot.sensoro.com>

## α Tool



<http://iot.sensoro.com/app/download>

## Docs



<http://docs.sensoro.com> .

## Base Station Status

LED	Status	What an you do
Breathing	Station Starting	Waiting for about 2 mins
White	Working Properly	Nothing to do
Yellow	Something Error	Restart
Red	No Internet Connection	Check the 3G / LAN

## Contact Us

US Headquarters

Seattle, United States

E-mail: [seattle@sensoro.com](mailto:seattle@sensoro.com)

Phone: +1 (425) 802-4936

Address: 500 YALE AVENUE NORTH SEATTLE WA 98109

Beijing Headquarters

Customer Service Tel: 400-686-3180

Working Hours: Monday to Friday 10:00 am to 7:00 pm

E-mail: [beijing@sensoro.com](mailto:beijing@sensoro.com)

Developers' QQ group: 385 456 618

Address: T1-B-2807, Wangjing SOHO, Chaoyang District, Beijing, China

## Customer Service

Tell : +86 010-8416 1077

Email : [seattle@sensoro.com](mailto:seattle@sensoro.com)

## CAUTION

RISK OF EXPLOSION IF BATTERY IS REPLACED  
BY AN INCORRECT TYPE.  
DISPOSE OF USED BATTERIES ACCORDING  
TO THE INSTRUCTIONS



## RECYCLING

This product bears the selective sorting symbol for Waste electrical and electronic equipment (WEEE). This means that this product must be handled pursuant to European directive 2012/19/EU in order to be recycled or dismantled to minimize its impact on the environment. User has the choice to give his product to a competent recycling organization or to the retailer when he buys an new electrical or electronic equipment.

## Warning

Changes or modifications to this unit not expressly approved by the party responsible for compliance could void the user's authority to operate the equipment.

## NOTE

This equipment has been tested and found to comply with the limits for a Class B digital device, pursuant to Part 15 of the FCC Rules. These limits are designed to provide reasonable protection

against harmful interference in a residential installation. This equipment generates, uses and can radiate radio frequency energy and, if not installed and used in accordance with the instructions, may cause harmful interference to radio communications.

However, there is no guarantee that interference will not occur in a particular installation. If this equipment does cause harmful interference to radio or television reception, which can be determined by turning the equipment off and on, the user is encouraged to try to correct the interference by one or more of the following measures:

- Reorient or relocate the receiving antenna.
- Increase the separation between the equipment and receiver.
- Connect the equipment into an outlet on a circuit different from that to which the receiver is connected.
- Consult the dealer or an experienced radio/TV technician for help.

**FCC RF exposure statement:**

FCC RF Radiation Exposure Statement Caution: To maintain compliance with the FCC's RF exposure guidelines, place the product at least 20cm from nearby persons. The device must not be co-located or operating in conjunction with any other antenna or transmitter.