

Automated Meter Reading (AMR) Transmitter Mounting Instructions For American Gas Meters



Applicable Meters

AL800, AL100, AL1400, AL2300, AL5000, 80B, 250B, 500B and any other American Meter commercial and industrial meter models with a top mounted plate and index.

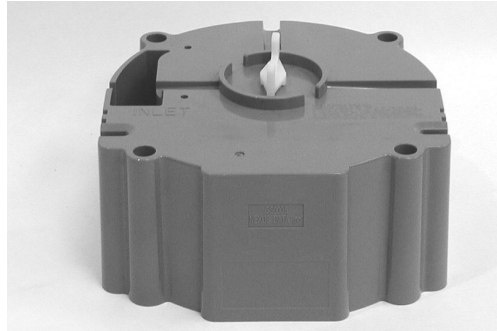
RF Exposure Note

In order to comply with FCC RF Exposure requirements, the Automatic Meter Reading unit must be installed in such a way that there is a 20cm separation distance between it and all persons during normal operation.

The installer of this radio equipment must ensure that the antenna is located or pointed such that it does not emit RF field in excess of Health Canada limits for the general population; consult Safety code 6, obtainable from Health Canada's website www.hc-sc.gc.ca/rpb

NOTE: THE MANUFACTURER IS NOT RESPONSIBLE FOR ANY RADIO OR TV INTERFERENCE CAUSED BY UNAUTHORIZED MODIFICATIONS TO THIS EQUIPMENT. SUCH MODIFICATIONS COULD VOID THE USER'S AUTHORITY TO OPERATE THE EQUIPMENT

Components



GS0006 AMR Transmitter

Hardware

Screw kit (see **Appendix – Transmitter Installation Screws** as identification guide):

- 4x mounting screws (thread length 3¼")
- 4x American Meter tamper seals



Tools

Verify that all the required tools for the installation are available:

- #3 Phillips screwdriver
- Flat screwdriver (blade size ¼")
- Stiff blade putty knife
- ¼" Nut driver
- *Mint* handheld terminal (HHT)



AMR Transmitter Installation

Installation Tasks

1. Remove index +index cover from gas meter.
2. Mount AMR transmitter onto gas meter.
3. Assemble index and cover onto AMR transmitter.
4. Initialize AMR transmitter with HHT.

Remove index cover

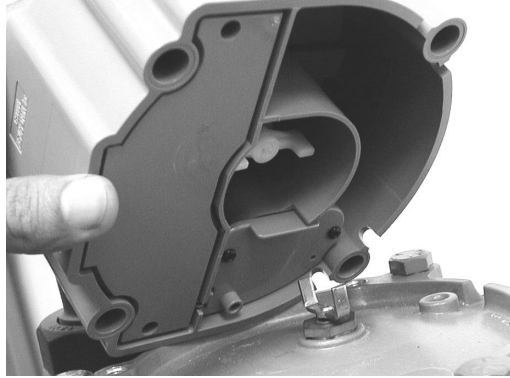
1. Use the flat screwdriver to punch out the seals that cover the four (4) index cover screws.



2. Remove and properly dispose the four (4) screws holding the index cover onto meter, with flat screwdriver. If two (2) or more screws shear off during the cover removal (or were previously sheared off), the meter will need to be replaced by a qualified utility representative. Reinstall any index cover screws that were removed and cap with seals if possible. Enter the appropriate information in the Mint HHT and skip to the next work order.
3. Remove the index and carefully clean any debris from it. Inspect for proper index operation by turning the input shaft and verifying that the gearing turns freely. Also, inspect the index for any missing or broken hands.
4. With a putty knife, scrap away any gasket material that remained on the meter when the index cover was removed.
5. Remove the index and index cover and place on a clean surface near you for reinstallation later.

Mount Transmitter on meter

Place the AMR Transmitter onto the gas meter, aligning the Transmitter's shaft with the gas meter's male or female wriggler; adjust the Transmitter shaft's position by holding it on the top side, and check for smooth motion transfer.



Assemble index and cover onto transmitter

Place the index and index cover on the Transmitter onto the gas meter, aligning the index shaft to the Transmitter's shaft

1. Attach the Transmitter to the meter using the four (4) mounting screws with #3 Phillips screwdriver. Place all screws, then torque down two (2) diagonal screws. Check shaft alignment again, then tighten the last two (2) screws.
2. Should two (2) or more screws shear or strip during the installation, the meter will need to be replaced by a qualified utility representative. Remove the transmitter and reinstall the index and index cover on the meter with the original screws. Enter the appropriate information in the Mint HHT and skip to the next work order.



3. Install the two snap seals in the index cover and insert fully with the aid of a 1/4" nut driver. Align the end of the nut driver on the snap seal and tap the end of the nut driver handle with your hand until it is fully seated.

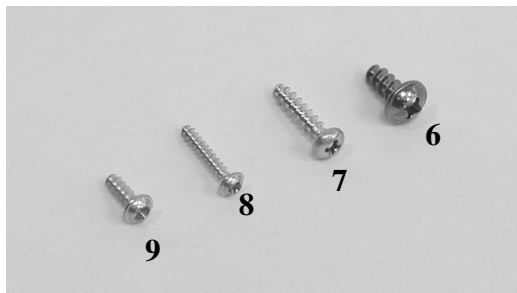
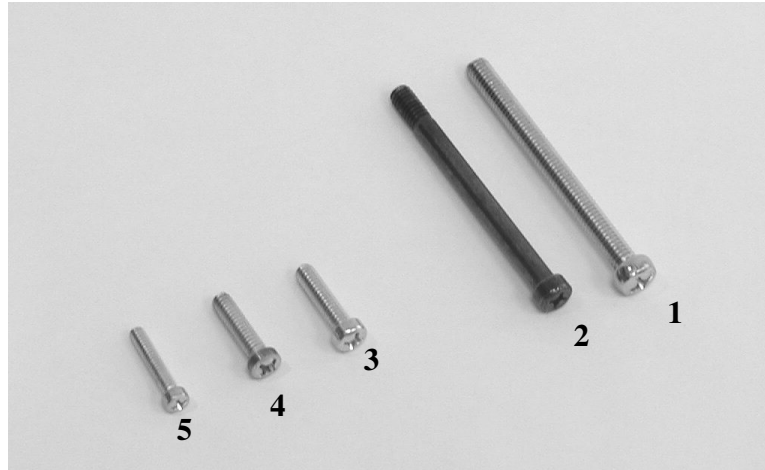


Initialize AMR Transmitter with HHT

On operating the *Mint* HHT, see **Gas AMR Installation HHT (*Mint*) User's Guide**. When you are ready to initialize (program) the AMR Transmitter, position the HHT with the upper back part of the HHT against the Transmitter receive area (see below) and press the PRG key (7-dot mark).



Appendix – Transmitter Installation Screws



Mounting Screws

1. Equimeter/Rockwell commercial meter (e.g. R750) – 5/16" x 3½" combo fillister
2. American commercial meter (e.g. AL800) – #18-18 x 84 Phillips pan head
3. American residential meter (e.g. AC250) – ¼" x 1" Phillips fillister
4. Schlumberger/Sprague residential meter (e.g. S175) – 10-24 x 1" Phillips fillister
5. Equimeter/Rockwell residential meter (e.g. R275) – 10-24 x 1" Phillips fillister

Index Screws

6. Equimeter/Rockwell commercial meter (e.g. R750) – WN1411 KA 60x14 Phillips
8. Equimeter/Rockwell residential meter (e.g. R275) – WN1412 KA 35x22 Phillips
9. American & Schlumberger/Sprague residential meter – WN1411 KA 40x12 Phillips

Index Cover Screws

7. All residential meters – WN1412 KA 50x20 Phillips