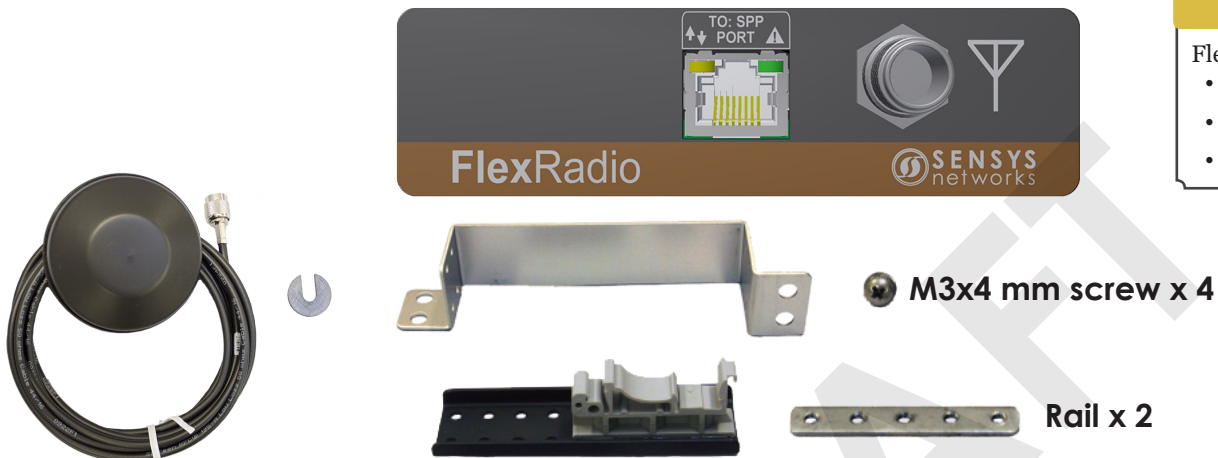


1 Assemble



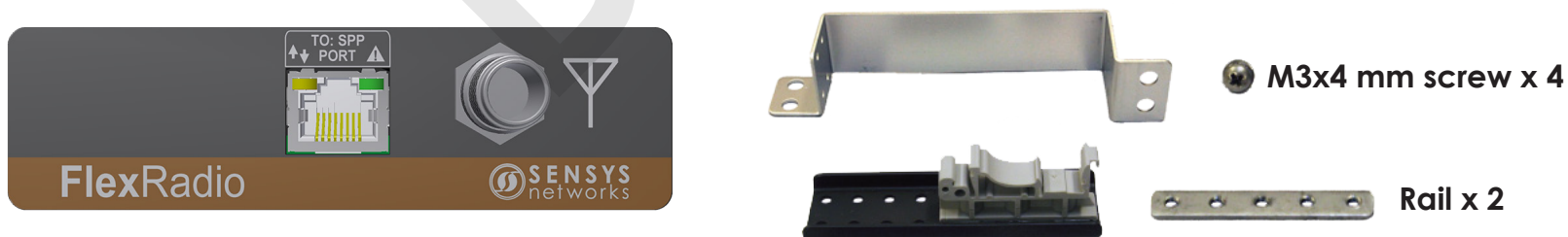
Tools Required

- FlexRadio Cabinet requires the following tools for installation:
- #2 Phillips bit screwdriver
 - 0.75" (1.9 cm) hole saw or step drill bit with power drill
 - Hand wrench

FlexRadio Cabinet Installation Parts

A FlexRadio Cabinet assembly requires a single FlexRadio Cabinet module, omnidirectional antenna, 6 foot coaxial cable, and the bracket/DIN mount kit.

2 Install FlexRadio Cabinet



Install FlexRadio Cabinet

Use the Sensys Networks provided DIN or bracket mounts to install the FlexRadio Cabinet inside the traffic cabinet. Refer to *Assembly Instructions Bracket and DIN Mounts* for more information.

3 Install Omni Directional Antenna



Drill a Hole in Traffic Cabinet

Drill a hole 3/4 inches (1.9 cm) diameter for aluminum ferrule antenna on top of the flat surface of the traffic cabinet with a hole saw or a step drill bit where the omni directional antenna will be installed.

Note: Ensure the antenna hole location will not interfere with the traffic cabinet inside.

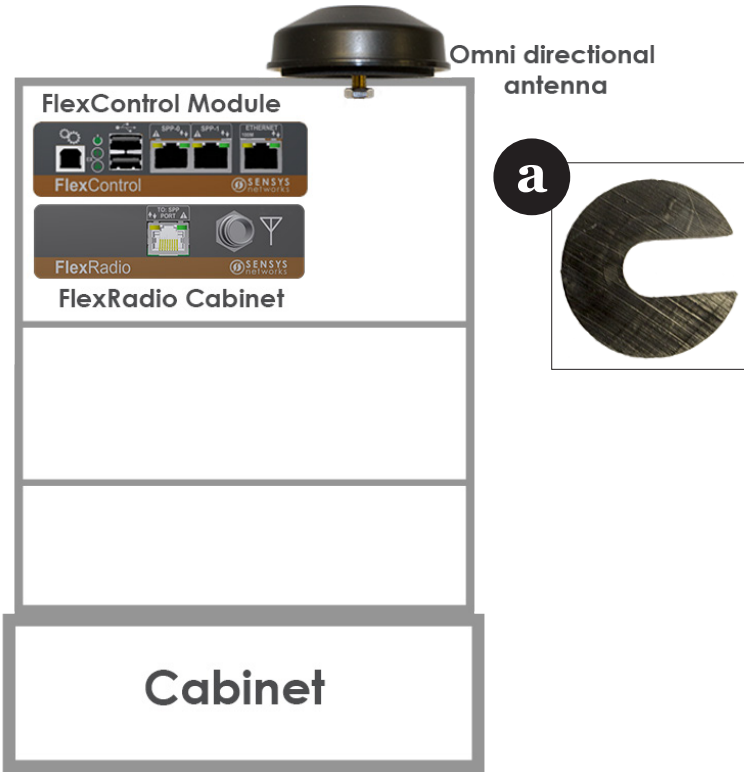
Omni Directional Antenna Installation
Please refer to *Bolt-On Antenna Installation Guide - Slotted Washer & Nut* that is provided in the antenna packaging for more details.

Thread Connectors into Cabinet

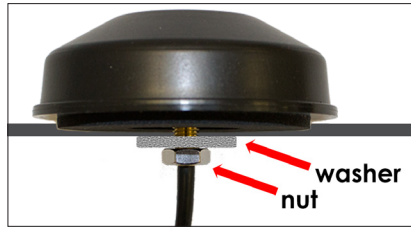
Pass the connectors through the hole. Pull the cable until the threaded end of the antenna ferrule appears in the hole. **DO NOT** pull on connectors. Pulling on the connectors may cause them to detach or may cause internal damage to the cable connection.

Add Washer

Install the plastic washer (a) onto the threaded ferrule. Ensure the flange on the washer is seated on the 3/4 inch hole. The flat side of the washer contacts the nut.



3 Install Omni Directional Antenna (cont.)



Secure Nut

Install nut on threaded ferrule. Hand tighten the nut until it contacts the plastic washer. Use a wrench to tighten the nut two more turns to secure the antenna and to seat the antenna's gasket.

4 Connect Cables to the FlexRadio Cabinet

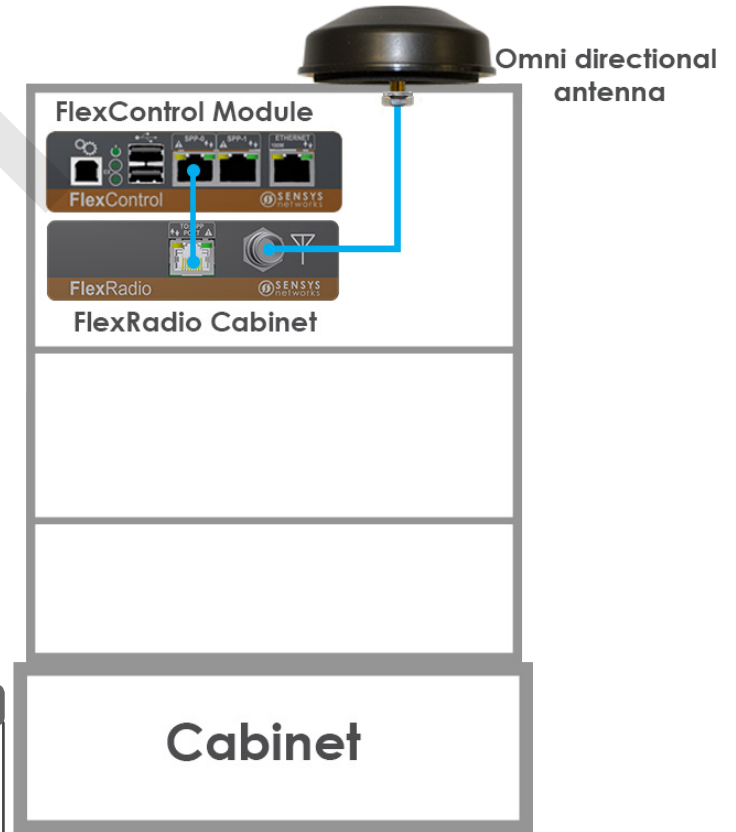
Connect the Antenna to FlexRadio Cabinet

Connect the RP TNC male end to the FlexRadio cabinet.

WARNING: DO NOT OVER BEND CABLE. Do not bundle excess cable; only loop with bend radius no smaller than 6 inches (15.2 cm).

Power FlexRadio Cabinet

Connect FlexRadio Cabinet module to FlexControl Module using CAT5 (or better) straight-through cables via *TO: SPP PORT* on the FlexRadio Cabinet module and the *SPP-o (or SPP-1)* port on the FlexControl Module.



Notice: Any changes or modifications not expressly approved by Sensys Networks could void the user's authority to operate the equipment. The external antenna must have gain less than +6dBi to meet regulatory requirements.

Local Distributor