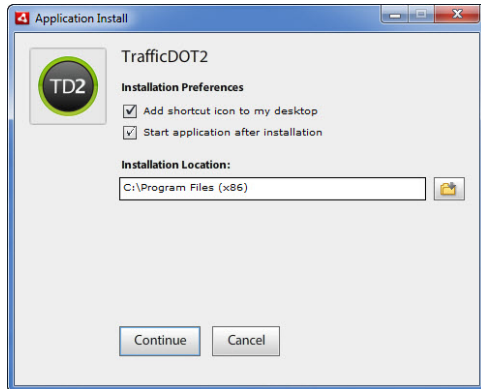


1 Set Up



Download & Install Software

Download the installation package from the Sensys Networks website: <http://www.sensysnetworks.com/products/traffidot>. Double-click on TrafficDOT2.exe and click **Run**.



Select Installation Preferences

Click the checkboxes to select desired preferences. Click **Continue** to accept the default installation location.

Note: Click the folder icon to select another location for TrafficDOT installation.

Connect Cables

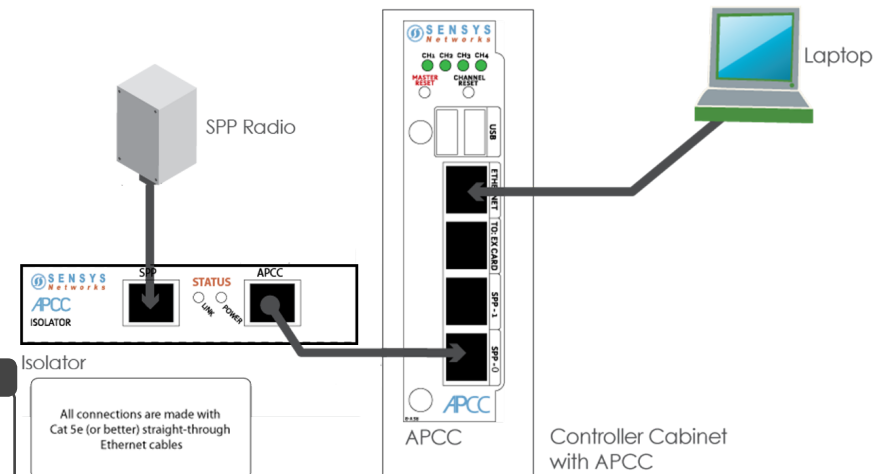
Cable the devices together with Cat5 cables. Turn on controller.

Note: Until Master Mode is on, the Power and Link light will be off.

Recommendations

- Internet access is required to download TrafficDOT2 and Adobe Air, or you need an offline version of Adobe Air and TrafficDOT2 same subnet as AP/APCC.
- You must be able to change network setting of your laptop.

APCC – Physical Connections

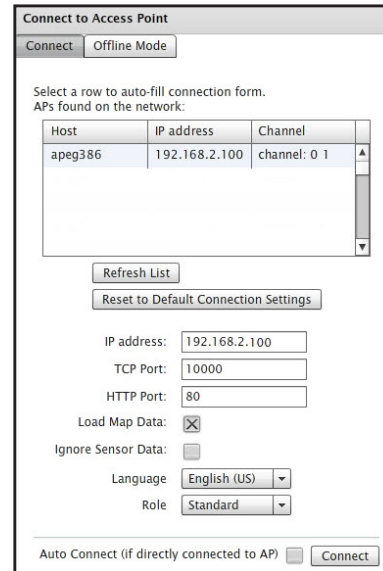


2 Connect



Run TrafficDOT

Click the TrafficDOT icon to start the configuration program.



Connect to Access Point

Connect Offline Mode

Select a row to auto-fill connection form.
APs found on the network:

Host	IP address	Channel
apeg386	192.168.2.100	channel: 0 1

Refresh List

Reset to Default Connection Settings

IP address: 192.168.2.100

TCP Port: 10000

HTTP Port: 80

Load Map Data:

Ignore Sensor Data:

Language: English (US)

Role: Standard

Auto Connect (if directly connected to AP) Connect

Type in IP Address

Select an APCC IP Address and click **Connect**.



Master Mode

Master Mode is not set for the following radios:

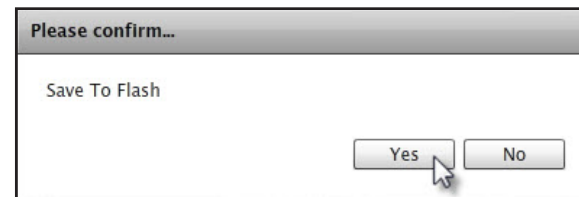
SPP-0: SPP-1:

Turn On Selected SPP(s) Continue Without Turning On Master Mode

Select Master Mode

Check Master Mode for each installed SPP radio and then click **Turn On Selected SPP(s)**.

Note: Once Master Mode is on the Power LED on APCC isolator should be on and the Link light should blink about every second.



Please confirm...

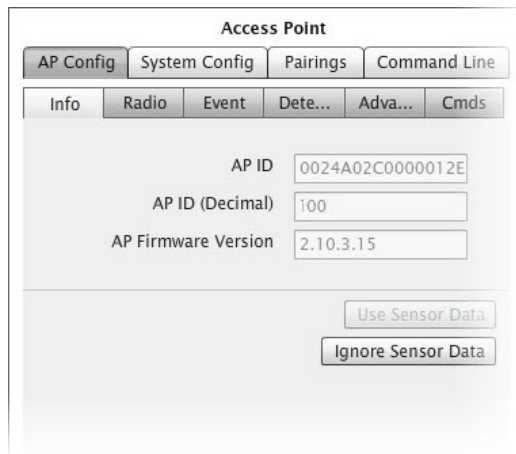
Save To Flash

Yes No

Save Changes

Click **Yes** to save to flash memory.

3 Run



Open AP Config Panel

Click on the APCC to open the *Access Point Configuration Panel*.



Set RF Channel

Click the **Radio** window:

1. Select *RF Channel*. The entries in the RF Channel drop-down list correspond to the 16 channels available for use. Select an entry from the list by clicking it. The factory default channel is zero.
2. Click **Apply**.

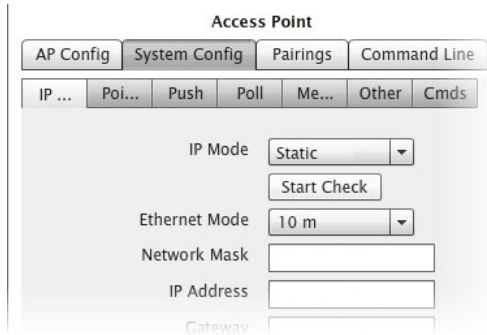


Save Changes

Click **Yes** to save to flash memory.

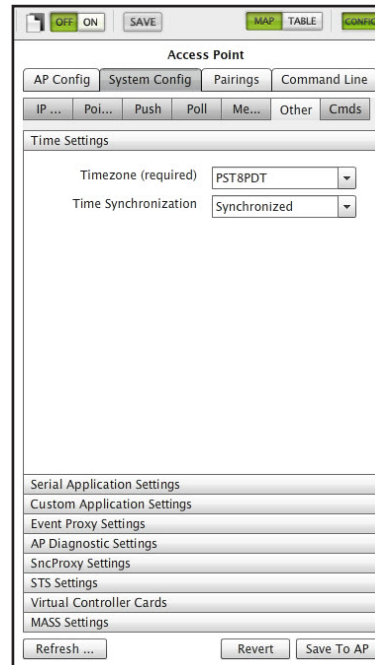
Quick Start Guide: Access Point Controller Card (APCC)

4 Manage



Open System Config Panel

Click the **System Config** tab to open the *System Configuration Panel*.



Start Controller Link & Set Time Zone

Click the **Other** tab (a), specify *Time Zone* (b), click **Save to AP**(c).

Main Windows

- The default radio channel of the access point and sensors is Channel 0 (zero).
- All sensors or repeaters on the APCC's channel are found on the Map View Tray or Table windows. Unassigned devices will not show up on the map itself.
- Green icons indicate normal, expected operation.
- Use the configuration panel options to further configure the system.

Note: Refer to the *Sensys Networks Wireless Vehicle Detection TrafficDOT 2 Set Up and Operating Guide* for more information

Local Distributor