

List of contents and manual for operation



1. Sensor
2. Com cable
3. Power cable
4. Floppy disc with software



Connect the grey com cable to the connector market “PC”

Connect the black power cable to the connector market “Power”



Connect the red banana pin to DC +12V

Connect the black banana pin to -0V

Turn the power on.

Turn the device on by switching the ON/OFF switch to on. (you should hear a faint “click” inside as you turn the device on and off)



The PC software

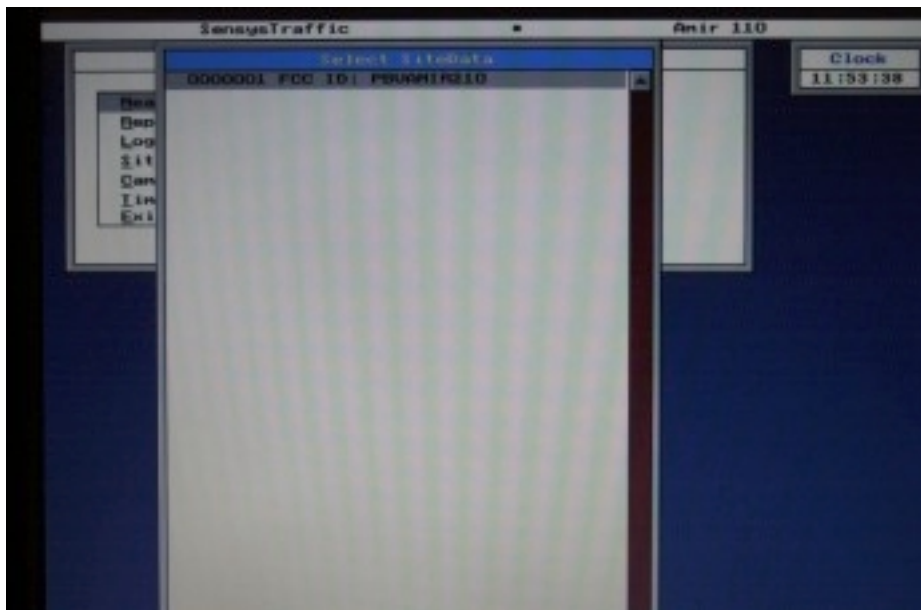
The program can be run on a computer with DOS or Windows, just make sure that the serial port (com 1) is available.

The program doesn't have to be installed on the computer, it runs from the floppy drive.

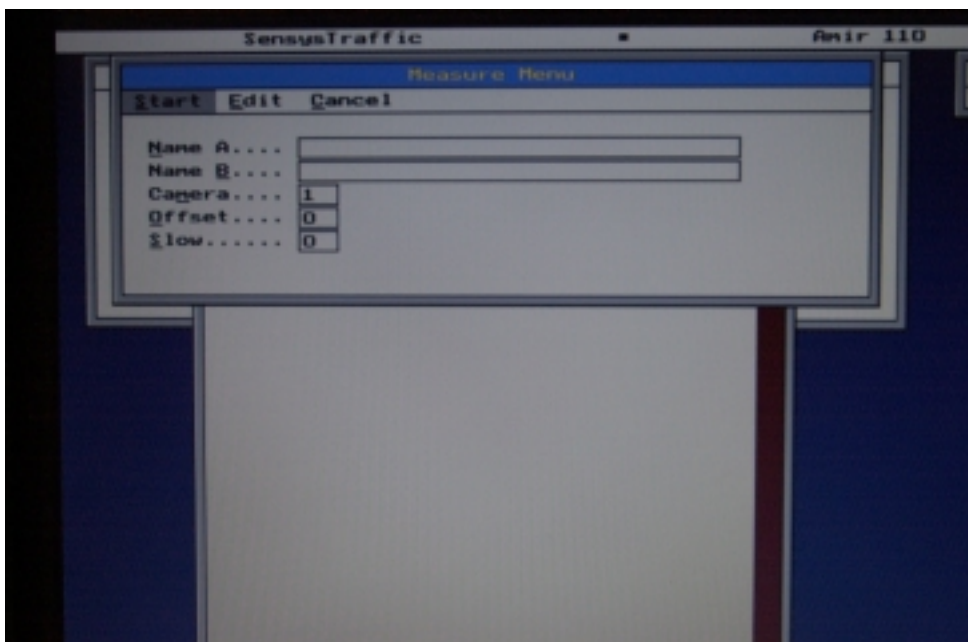
- Connect the com cable to the serial port on a PC.
- Insert the floppy disc in the floppy drive.
- On the disc, there is folder called "ASTRO".
- Open the file called "ASTRO", in the folder "ASTRO".



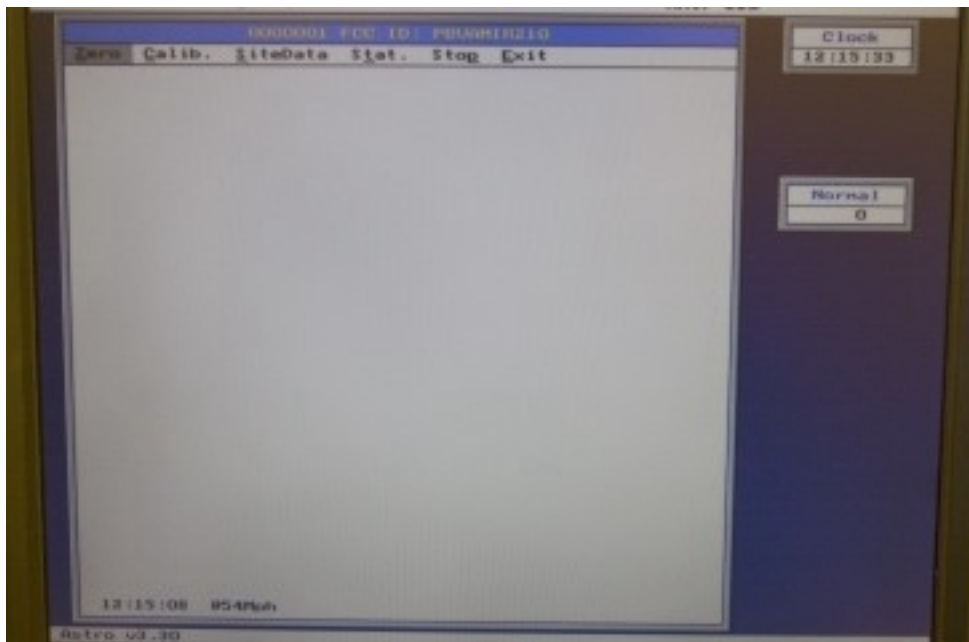
- The main menu looks like above.
- Scroll up or down with the arrow keys.
- Choose with "Return".
- To start the device – choose "Measure"



- Choose what “site” you want to use (there is only one)
- Choose by hit “Return”



- Start the dive by hitting “Return” once more.



- When the device is started, this screen appears.
- The device makes a internal calibration every 15 min and will appear on screen as 54mph
- To stop the measurement – use arrow keys and choose “stop”.
- Exit the program from the main menu by choosing “Exit”.
- If you get an error message when you start the measurement, turn the device off and then on again, and try again.