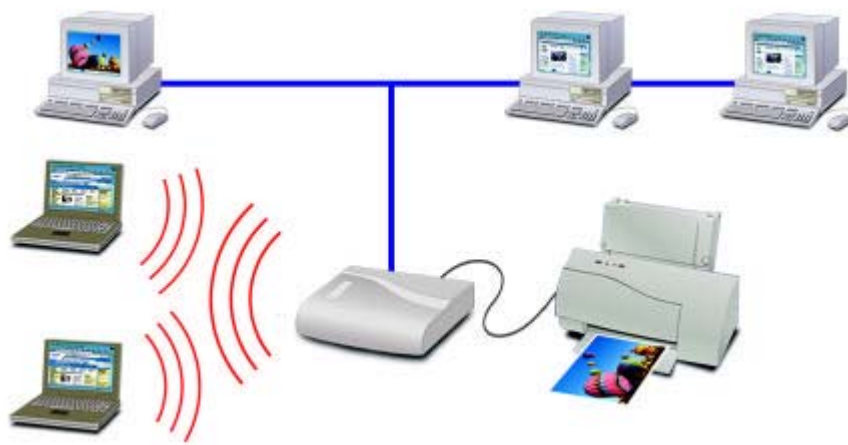


Wireless Print Server



User Guide

Copyright ©2001. ALL RIGHTS RESERVED

Document Version: 1.0 (October, 2001)

P/N: 9570F20001

All trademark and trade names are the properties of their respective owners.

FEDERAL COMMUNICATIONS COMMISSION INTERFERENCE STATEMENT

This equipment has been tested and found to comply with the limits for a Class B digital device, pursuant to Part 15 of the FCC Rules. These limits are designed to provide reasonable protection against harmful interference in a residential installation. This equipment generates, uses and can radiate radio frequency energy and, if not installed and used in accordance with the instructions, may cause harmful interference to radio communications. However, there is no guarantee that interference will not occur in a particular installation. If this equipment does cause harmful interference to radio or television reception, which can be determined by turning the equipment off and on, the user is encouraged to try to correct the interference by one or more of the following measures:

- Reorient or relocate the receiving antenna.
- Increase the separation between the equipment and receiver.
- Connect the equipment into an outlet on a circuit different from that to which the receiver is connected.
- Consult the dealer or an experienced radio/TV technician for help.

CAUTION:

Any changes or modifications not expressly approved by the grantee of this device could void the user's authority to operate the equipment.

FCC RF Radiation Exposure Statement

This equipment complies with FCC RF radiation exposure limits set forth for an uncontrolled environment. This equipment should be installed and operated with a minimum distance of 20cm between the radiator and your body.

Chapter 1

Introduction

1

This chapter provides an overview of your Print Server's features.

Features

Congratulations on the purchase of your new Print Server. This device was designed to provide a simple and efficient network printing solution. It is packed with features, including:

- **Versatility.** The Print Server supports TCP/IP, SMB (Service Message Block), AppleTalk (EtherTalk), and NetBEUI. Operating system support includes Apple, Unix, and Microsoft Windows. The PS723H also provides full support for Novell NetWare.
- **Easy Installation and Setup.** Installation can be accomplished in minutes. For initial configuration, a number of utility programs are supplied to simplify setup. For Windows 95/98/NT/ME/2000/XP users, the supplied Wizard allows quick and easy setup.
- **Web-based Interface.** The Web-based interface provides an easy method of configuration in TCP/IP networks.
- **Compact Size.** This allows the Print Server to be used even where space is limited.
- **Remote Management Tools.** A variety of software tools are provided. In most environments, both the Print Server and attached bi-directional printers can be configured remotely, from any station on your LAN. For Windows users, the supplied BiAdmin program makes it easy to configure the Print Server for a variety of network and server configurations
- **SNMP Support.** The Print Server can act as a SNMP agent, with it's own MIB. This allows TCP/IP users to monitor, configure and troubleshoot the Print Server using their existing SNMP management tools.
- **JetAdmin Support.** If you are already using HP's *JetAdmin*, you can also use this program to manage your Print Server.
- **Internet Printing Protocol (IPP) Support.** All models can act as an IPP (Internet Printing Protocol) Server, allowing clients, suppliers, colleagues and others to print to your printer from anywhere on the Internet. Windows IPP Client software is also supplied.
- **Wireless LAN Support.** Wireless stations supporting the IEEE 802.11b standard can interoperate with the Wireless Print Server. Both LAN and WLAN users can print to the attached printer.
- **Wireless Access Point (PS723H only).** The PS723H can act as a Wireless Access Point, allowing Wireless Stations to access LAN resources. The IEEE 802.11b standard is fully supported, including WEP and access control.

Safety Instructions

For your own safety, and to protect your Print Server, please observe the following safety advice.

1. Unplug this device from its power source before cleaning. Use only a slightly dampened cloth for cleaning. Do not use liquid or aerosol cleaners.
2. Avoid using this product near water. Exposure to water poses an electric-shock hazard.
3. Do not place the Print Server on an unstable surface. The device may fall causing serious damage to the device.
4. This device should only be used with the power supply type specified on the marking label. If you are not sure of type of your local power supply, consult your dealer or the local power company.
5. Do not pinch, crimp or otherwise damage the power cord. If exposed to foot traffic, ensures that the cable is properly shielded and does not pose a tripping hazard.
6. If using an extension cord, makes sure the total ampere rating of the products using the cord does not exceed the extension cord's ampere rating.
7. Do not attempt to service this device, as opening or removing casing may expose you to dangerous voltage points or other risks. Refer all servicing to qualified service personnel.
8. The Print Server should be serviced by qualified service personnel under the following conditions:
 - The power cord is damaged or frayed.
 - Liquid has been spilled onto the product.
 - The product has been exposed to rain or water.
 - The product does not operate normally in accordance with the operating instructions.
 - The device has been dropped or the casing has been damaged.

Package Contents

You should find the following items packaged with your Print Server. If any items are missing, contact your dealer immediately.

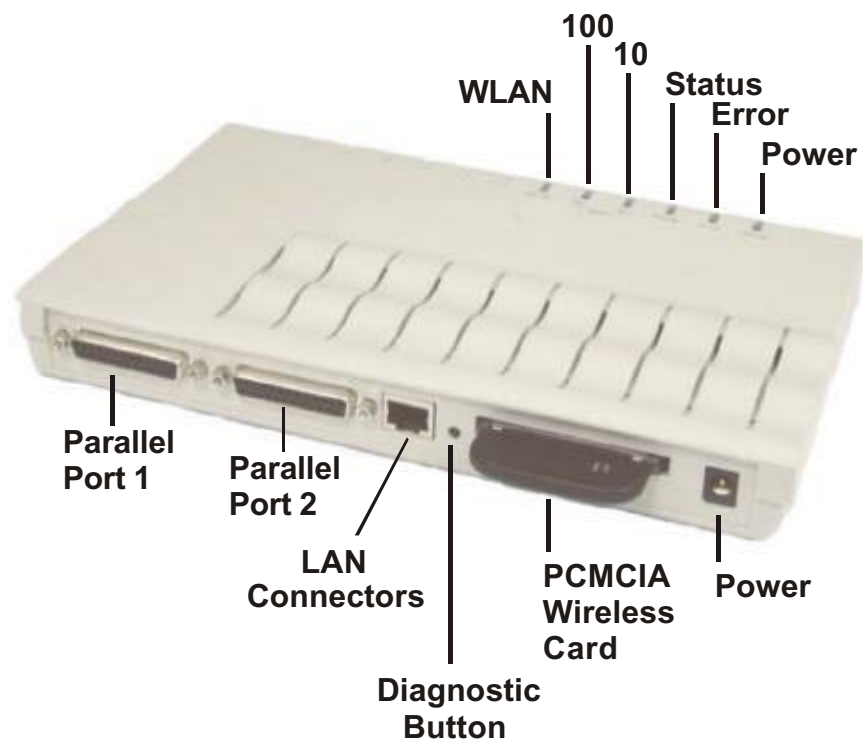
- The Print Server
- Power Adapter
- One CD-ROM containing all support programs and this manual
- Quick Install Guide
- Wireless PCMCIA Card

Models

This manual covers the following Wireless Print Server models. Details of the LEDs is in this Chapter. Further details of each model are contained in *Appendix A - Specifications*.

PS723H Super Print Server

- 2 Parallel Ports
- IEEE 802.11b Wireless Access Point
- 10/100BaseT LAN connection



PS7100 Print Server

- 1 Parallel Printer Port
- IEEE 802.11b Wireless Station
- 10/100BaseT LAN connection



LED Indicators

All models have two LED indicators on the top. The Error LED is orange or red. The Status indicator LED is green. The LED indicator modes are described in the following table.

Status	Error	Description
Solid Off	Solid Off	No power
Solid On	Solid On	Hardware error
Solid On	Solid Off	Normal operation (Idle)
Blinking	Blinking	Firmware upgrade in progress (the two LED blink in sequence)

LEDs - PS723H

The PS723H has additional LEDs as follows:

LED	Description
Power	OFF - no power ON - normal operation; power On.
10	ON - Indicates the LAN connection is using 10BaseT. Flashing - Data is being transmitted or received via the LAN port.
100	ON - Indicates the LAN connection is using 100BaseT or 100BaseTX. Flashing - Data is being transmitted or received via the LAN port.
WLAN	ON - Wireless Access Point is available; PCMCIA wireless card is working correctly. OFF - Wireless Access Point is not available. The PCMCIA wireless card is not working correctly. Flashing - Data is being transmitted or received via the Wireless Access Point.

LEDs - PS7100

The PS7100 has 2 additional LED indicators as follows:

LED	Description
WLAN ACT	Off - Idle Flashing - Transmitting or receiving data through the Wireless LAN.
LAN ACT	Off - Idle Flashing - Transmitting or receiving data through the LAN.

Diagnostic Push Button

The Print Servers are fitted with a Diagnostic Push Button. The button is recessed; a pin or paper clip can be used to press it. This button has 2 functions:

- Restore the factory default settings

- Print a test page containing all current settings.

To restore the factory default settings:

1. Turn the Print Server OFF.
2. Press and hold the diagnostic button. While pressing the button, switch the Print Server ON.
3. If you continue pressing the button for 10 seconds, a diagnostic page will be printed, showing the new (default) settings.

To generate a Diagnostic print out

1. Ensure that both the Print Server and the attached printer are ON. (On the PS723H, port 1 is used.)
2. Press the diagnostic button, and hold it in for 2 seconds.
3. The test page, containing the current settings, will be printed.

Note:

PostScript printers are unable to print this page. If you have a PostScript printer, the test page will not be printed.

Chapter 2

LAN Installation

2

This chapter describes how to install the Print Server in your Local Area Network.

Procedure

1. Preparation

- a) Ensure the power is OFF. Do not connect the Print Server while power is On.
- b) The supplied PCMCIA wireless card must be inserted into the PCMCIA slot on the rear. With the LEDs on the PCMCIA card facing UP, slide the card into the PCMCIA slot until it encounters some resistance. Push firmly and it will click into position.
- c) Find the *Default Server Name* for your Print Server.
 - The *Default Server Name* is shown on a sticker on the base of the device. It consists of 8 letters and/or digits.
 - Record this name; it will be needed during configuration.



Note!

During configuration you will be able to change the device name. The new name **MUST NOT** contain any spaces or blanks

2. Connect the Printer or Printers

- Connect the printer or plotter cable(s) to the appropriate port(s) on the Print Server unit. Parallel port cables should be less than 3 meters long.

3. Connect the Network Cable

- Connect a standard network cable from the LAN connector on the Print Serve to standard to a 10BaseT or 100Base Hub or Switch.



Note!

On the PS7100, this will disable the Wireless interface, because the default "Infrastructure mode" wireless setting can NOT be used with the LAN interface. To use both the LAN and Wireless interfaces, the Wireless mode must be set to "Ad-hoc".

After configuration, the LAN interface can be disconnected if not required.

4. Power Up and Check the LEDs

- Plug in the power adapter cable and power up. Start-up will take only a few seconds.
- Check the Power and Status LED indicators of the unit. When the Red Error LED goes out and the Green Status LED remains lit or flashes, the Print Server is ready.



Warning!

Use only the Power Supply unit provided with the device. Power Supply units for different models are not interchangeable.

Print Server Configuration

This chapter provides an overview of the configuration process.

Overview

The Print Server is designed to support many different platforms, and the configuration required would depend upon the environment in which it is installed.

- The Print Server usually requires configuration. A Windows-based setup Wizard is provided on the CD-ROM to simplify this task.
- PCs wishing to use the printer attached to the Print Server always require configuration. See *Chapter 4 - Client Configuration* for details.
- If using the PS723H Print Server with a **NetWare Server** (V3, 4, or 5 in "compatibility" mode), the supplied Setup Wizard can also configure the NetWare Server for basic operation.
 - For advanced configuration and management, the BiAdmin program (detailed in *Chapter 6 - BiAdmin Management Utility*) is recommended.
 - If using NDPS, refer to *Appendix B - Network Server Configuration*.
- If you wish to use a queue-based printing system using **Windows NT Server/Windows 2000**, the Network Server must be configured as detailed in *Appendix B - Network Server Configuration*. However, it is not necessary to use a Network Server-based queue; client PCs can print directly to the Print Server using the *Peer-to-peer Print Driver* installed by the *User* setup option on the CD-ROM.



PS7100 model supports Windows and Macintosh environments only. (NetWare and UNIX are supported only by the PS723H.)

Using the Windows Wizard

The Windows-based Wizard runs on Windows 95, 98, NT4.0, ME, Windows 2000 and XP.

It will configure the Print Server for your Network environment.

If using the PS723H Print Server with NetWare, the Wizard can also configure the NetWare Server, provided:

- You are logged into the required NetWare server with ADMIN rights.
- NetWare Client32 is installed on the PC you are using for configuration.

Procedure

1. Insert the supplied CD-ROM into your drive. If the setup program does not start automatically, run SETUP in the root folder.
2. Run the *Setup Wizard*, either by using this option on the first installation screen, or by selecting it from the menu after running the *Installation* option.



Select the Administrator option when running the *Installation*. This will install both the Setup Wizard and the BiAdmin management program.

3. Within the *Setup Wizard*, select the Print Server you wish to configure, click *Next*, and step through the Wizard.

If the desired Print Server is not listed:

- Check all cables to the Print Server.
- Check the Print Server's LEDs:
 - The Red LED should be OFF and the Green LED should be ON or flashing.
 - If your model supports 10BaseT and 100BaseT, check the 10/100BaseT link LED next to the LAN connection. If the auto negotiation fails, the 10/100BaseT Link LED will not light when the device is powered up. (If there are 2 LEDs, neither will light.)
- Check that your PC and the Print Server are on the same LAN segment. (If you don't have a Router or Gateway on your LAN, you only have 1 segment.)
- Check that your PC has either the TCP/IP or NetBEUI network protocols installed. See *Checking your Network Protocols* in *Chapter 4 - Client PC Setup* for details.
- If you PC can't configure the Print Server correctly (in Infrastructure mode), then try to connect to LAN and disable the Wireless.

Alternatives to the Windows Wizard

If you do not have a Windows 32 platform available, use one of the following methods to configure the Print Server.

Web Browser	See <i>Chapter 6 - Web Interface Setup</i> for details.
FTP	Using this method, the configuration file is downloaded from the Print Server, edited, then sent back. No software needs to be installed. See the UNIX manual for details. The Unix manual is on the CD-ROM, in the Manual\Unix folder

Wireless Configuration

Models PS7100

The PS7100 is Wireless stations, NOT access points. Like all other Wireless stations, they have 3 modes:

- **802.11 Ad Hoc mode** - no Access Point is used, Wireless stations communicate directly with each other. This is the current standard.
- **Ad Hoc mode** - no Access Point is used, Wireless stations communicate directly with each other. This is the older standard.



Note!

Of the two (2) Ad-hoc modes, "802.11 Ad Hoc" mode is recommended. If your Wireless LAN Card doesn't provide "802.11 Ad Hoc" mode, try "Ad Hoc" mode on the PC and "802.11 Ad Hoc" on the PS7100/7800. If this fails, select "Ad-hoc" mode on the Print Server.

- **Infrastructure (Default)** - all Wireless stations connect to the Access Point. This allows connection to both other Wireless stations and the wired LAN.



Note!

The PS7100 and P7800 do NOT allow both a LAN connection and "Infrastructure" mode. In "Infrastructure" mode, connecting a LAN cable will disable the Wireless interface. To use the LAN interface, "Ad-hoc" mode must be used.

Required configuration

	Ad-hoc Mode	Infrastructure Mode
SSID	Must match the other Wireless stations, unless the SSID is null or "any". If its SSID is null or "any", a Wireless station can join any Ad-hoc group. But since the PS7100 is fixed devices (rather than roaming), their SSID should not be null or "any". It's recommended to assign value to SSID for PS 7100	Must match the Access Point.
Channel	Should match the other Wireless stations. However, when joining an existing ad-hoc group, a Wireless station must use the Channel in use, rather than its own Channel. For a device like the PS7100 in a fixed location, it is best to set them to the Channel providing the least interference and best performance.	Access Point sets the Channel used. Wireless stations automatically locate the correct channel.
WEP Settings	Must match the other Wireless stations.	Must match the Access Point.

Two (2) methods are available to perform the required configuration:

- **BiAdmin** management utility program - see below for details.
- **Web-based setup** - see Chapter 6 for details.

BiAdmin Wireless Screen

Installation and use of the BiAdmin Windows utility is described in Chapter 5.

Clicking the *Wireless* icon, or selecting *Configuration - Wireless* on the menu, will display the following screen.

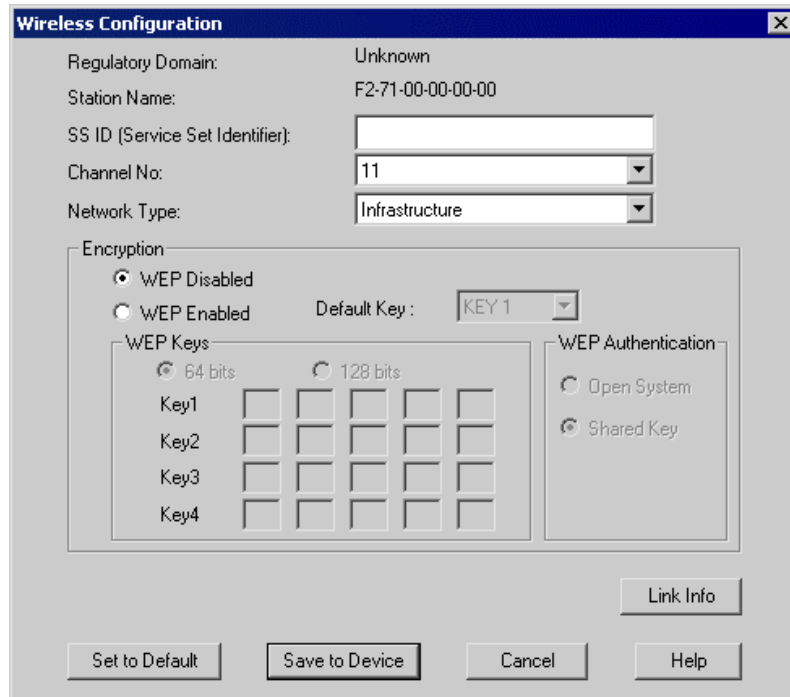


Figure 1: Wireless Screen

Regulatory Domain	It is illegal to use this device in any location outside of the regulatory domain.
Station Name	The name used to identify this Wireless station.
SSID	<ul style="list-style-type: none"> • If using an ESS (Extended Service Set, with multiple access points) this ID is called an ESSID (Extended Service Set Identifier). • To communicate, all Wireless stations MUST use the same SSID/ESSID. Change this value, or change the other Wireless stations, to ensure each Wireless station has the same value. • The default value is "null", so the Wireless station can join any Ad-hoc group. Note! The SSID is case sensitive.

Channel No	<p>To communicate in "802.11 Ad-hoc" or "Ad hoc" mode, all Wireless stations MUST use the same Channel number.</p> <ul style="list-style-type: none"> • If using "802.11 Ad-hoc" or "Ad-hoc" mode, select the value you wish to use on your Wireless LAN. • If using "Infrastructure" mode, the Channel is selected automatically, to match the Channel used by the Access Point. • If you experience interference (shown by lost connections and/or slow data transfers) you may need to experiment with different channels to see which is the best.
Network Type	<p>Select the correct value for your Wireless LAN.</p> <ul style="list-style-type: none"> • 802.11 Ad-hoc mode is used when there is no Wireless Access Point, and each Wireless station communicates directly with other Wireless stations. This is the current standard. • Ad-hoc mode is used when there is no Wireless Access Point, and each Wireless station communicates directly with other Wireless stations. This is the older standard. • Infrastructure mode is used when each Wireless station connects to the Wireless Access point. This also provides access to the wired LAN.
Encryption	
WEP Disabled/ Enabled	<p>If Disabled (default), data is NOT encrypted before being transmitted.</p> <p>If Enabled, you must provide either the 64 Bit key table or the 128 Bit keys, as described below. The key is used to encrypt the data before transmission.</p>
64 Bit	<ul style="list-style-type: none"> • If selected, data is encrypted, using the default key, before being transmitted. The receiving station must be set to 64 Bit Encryption, and have the same Key value in the same position in its key table. Otherwise, it will not be able to decrypt the data. • Default Key - select the key you wish to be the default. Transmitted data is ALWAYS encrypted using the Default Key; the other Keys are for decryption only. <p>Key Table:</p> <p>This table is used when Encrypting and Decrypting data. All stations, including this Access Point, always transmit data encrypted using their default key. The key number (1, 2, 3, 4) is also transmitted. The receiving station will use the key number (1, 2, 3, 4) to determine which key value to use for decryption. If the key value does not match the transmitting station, decryption will fail.</p> <p>The easiest way to ensure there are no problems is to have every Station, including the Access Point, use the same key table (all entries identical). Then, it does not matter which key is used as the default key.</p>
128 Bit	<p>If selected, data is encrypted using the key before being transmitted. The receiving station must be set to use 128 Bit Encryption, and have the same Key value. Otherwise, it will not be able to decrypt the data.</p>
WEP Authentication	<p>Options are "Open System" or "Shared Key".</p> <p>Some Wireless cards and Access Points do not support both methods. Check your documentation to determine the correct value to use.</p>

Wireless Link Info Screen

After clicking the "Link Info" button on the Wireless Screen, a screen like the example below will be shown.

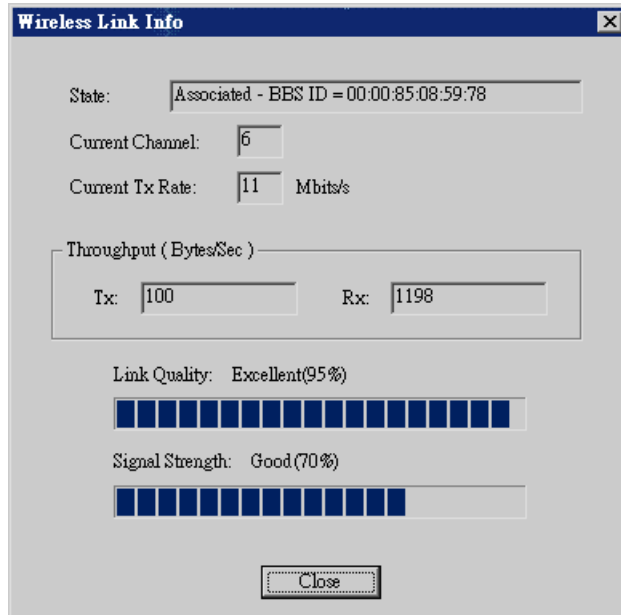


Figure 2:Link Info Screen

State	This indicates which access point is currently in use.
Current Channel	The current channel which has been used.
Current TX Rate	The current transmitting speed.
Throughput (Tx)	This will show how much data has been transmitted per second.
Throughput (Rx)	This will show how much data has been received per second.
Link Quality	This indicates the quality of the Wireless connection
Signal Strength	This indicates the strength of the Wireless signal being received.



Note!

The "Link Quality" and "Signal Strength" data is not available if using "Ad-hoc" or "802.11 Ad-hoc" mode.

Model PS723H

The PS723H has the ability to act as a Wireless Access Point. This section applies only to the PS723H.

To allow Wireless Stations to use the Access Point, the Wireless Stations and the Access Point must use the same settings, as follows:

Mode	On client Wireless Stations, the mode must be set to "Infrastructure". (The Access Point is always in "Infrastructure" mode.)
SSID (ESSID)	Wireless Stations must use the same SSID (ESSID) as the Access Point they wish to connect to.
WEP	The Wireless Stations and the Access Point must use the same settings for WEP (Off, 64 Bit, or 128 Bit). WEP Key: If WEP is enabled, the Key Table (for 64 Bit encryption) or Key (for 128 Bit Encryption) must be the same on the Wireless Stations and the Access Point. WEP Authentication: If WEP is enabled, all Wireless Stations must use the same setting as the Access Point (either "Open System" or "Shared Key").

You can change either the PS723H, or your Wireless Stations, to ensure that these settings match.

Changing Wireless Settings on the PS723H

To change the default settings on the PS723H, use either of the following methods:

- **BiAdmin Windows Utility.** See Chapter 5 for details on installing and using BiAdmin.
- **Web Interface.** See Chapter 6 for details of using the Web Interface.

BiAdmin Wireless Screen

Installation and use of the BiAdmin Windows utility is described in Chapter 5.

Clicking the *Wireless* icon, or selecting *Configuration - Wireless* on the menu, will display the following screen.

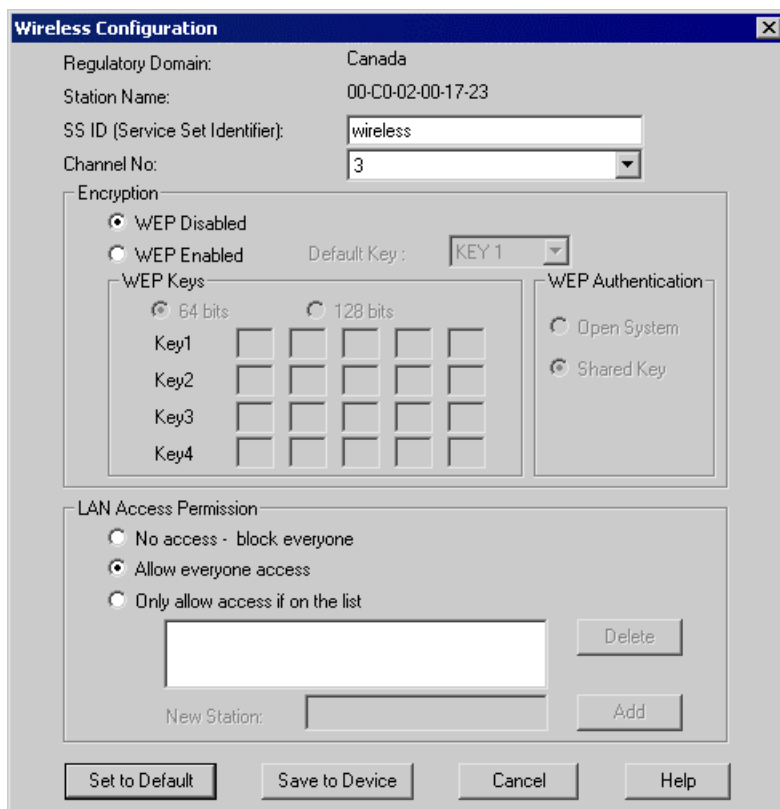


Figure 3: Wireless Configuration

Regulatory Domain	It is illegal to use this device in any location outside of the regulatory domain.
Station Name	The name used to identify this Wireless station.
SSID	<ul style="list-style-type: none"> • If using an ESS (Extended Service Set, with multiple access points) this ID is called an ESSID (Extended Service Set Identifier). • To communicate, all Wireless stations MUST use the same SSID/ESSID. Change this value, or change the other Wireless stations, to ensure each Wireless station has the same value. • The default value is <code>wireless</code>. <p>Note! The SSID is case sensitive.</p>
Channel No	By using "Infrastructure" mode, the Channel is selected automatically, to match the Channel used by the Access Point.
Encryption	
WEP Disabled/Enabled	<p>If Disabled (default), data is NOT encrypted before being transmitted.</p> <p>If Enabled, you must provide either the 64 Bit key table or the 128 Bit keys, as described below. The key is used to encrypt the data before transmission.</p>

64 Bit	<ul style="list-style-type: none"> • If selected, data is encrypted, using the default key, before being transmitted. The receiving station must be set to 64 Bit Encryption, and have the same Key value in the same position in its key table. Otherwise, it will not be able to decrypt the data. • Default Key - select the key you wish to be the default. Transmitted data is ALWAYS encrypted using the Default Key; the other Keys are for decryption only. <p>Key Table:</p> <p>This table is used when Encrypting and Decrypting data. All stations, including this Access Point, always transmit data encrypted using their default key. The key number (1, 2, 3, 4) is also transmitted. The receiving station will use the key number (1, 2, 3, 4) to determine which key value to use for decryption. If the key value does not match the transmitting station, decryption will fail.</p> <p>The easiest way to ensure there are no problems is to have every Station, including the Access Point, use the same key table (all entries identical). Then, it does not matter which key is used as the default key.</p>
128 Bit	<p>If selected, data is encrypted using the key before being transmitted. The receiving station must be set to use 128 Bit Encryption, and have the same Key value. Otherwise, it will not be able to decrypt the data.</p>
WEP Authentication	<p>Options are "Open System" or "Shared Key".</p> <p>Some Wireless cards and Access Points do not support both methods. Check your documentation to determine the correct value to use.</p>
LAN Access Permission	
No access	Nobody can use the Access Point.
Allow everyone access	Everyone can use the Access Point.
Only allow access to those on the list	Only Wireless Stations in the list can use the Access Point.
New Station	<p>To add a new station to the list, enter its address here, and click the <i>Add</i> button. The address will look like this example:</p> <p>10:98:10:98:10:91</p>

Advanced Configuration and Management

The BiAdmin management utility is provided for advanced configuration and management. This program is installed by default when the *Administrator* install option is chosen.

- See Chapter 5 for details on using BiAdmin.
- For instructions on using BiAdmin for NetWare configuration, see the *NetWare* manual on the CD-ROM. It is located in the Manual/Netware folder.

Chapter 4

4

Client PC Configuration

The chapter details the client configuration required on LAN clients to use the printer or printers attached to the Print Server.

Overview

Before performing client configuration, the Print Server must be installed on your LAN, and configured as described in Chapter 3. Both the Print Server and the attached printer must be powered ON.

Printing Methods

The Print Server supports a number of printing methods:

- **Peer-to-peer Print Driver** is used by the **User** installation on the CD-ROM. The print jobs are stored (queued) on your PC, and sent to the Print Server when it is available.
- **Server-based Print Queue** means that all print jobs are stored (queued) on the Network Server (e.g. NetWare, Windows NT/2000) and then sent to the Print Server. This allows the Network Administrator to modify the Print Queue. For example, an important job can be moved to the head of the queue.
- **Windows SMB** printing is a Microsoft standard for using a "Network Printer". No additional software needs to be installed on your Windows PC, and printing from MS-DOS programs is supported. However, because the Print Server can not store files, large print jobs may cause problems.
- **AppleTalk** is also supported, and normally no configuration of the Print Server is required. See the Macintosh section of this chapter for details of client configuration.

Which printing method should I use?

- If using Windows 95, 98, NT, ME or 2000, the easiest method is to install the *Peer-to-peer Print Driver* on the CD-ROM, by selecting the **User** installation.
- If using Windows, and you need to print from MS-DOS programs, or you don't wish to install additional software, use SMB. However, SMB is not suitable for large, complex documents, so if you need this as well as MS-DOS printing, you should install BOTH the *Peer-to-peer Print Driver* and SMB printing. MS-DOS programs can use the SMB printer, Windows programs should use the *Peer-to-peer Print Driver*.
- If your LAN has Network Servers (e.g. Windows NT, Windows 2000 Server, NetWare) use the method advised by your Network Administrator. The Print Server can print via a queue located on a Network server, if desired.
- **Unix** users - refer to the *Unix Manual* on the CD-ROM, in the Manual/Unix directory.
- **Macintosh** users - refer to the Macintosh section of this chapter.

Checking your Network Protocols (Windows)

Your PC must have EITHER the TCP/IP or NetBEUI protocols installed.

- If using the *Peer-to-peer Print Driver*, the installation program will check this for you.
 - If using *Windows SMB Printing*, you must check manually, as follows:
1. Select the *Settings - Control Panel - Network* option on the Start Menu. You should see a screen like the one following:

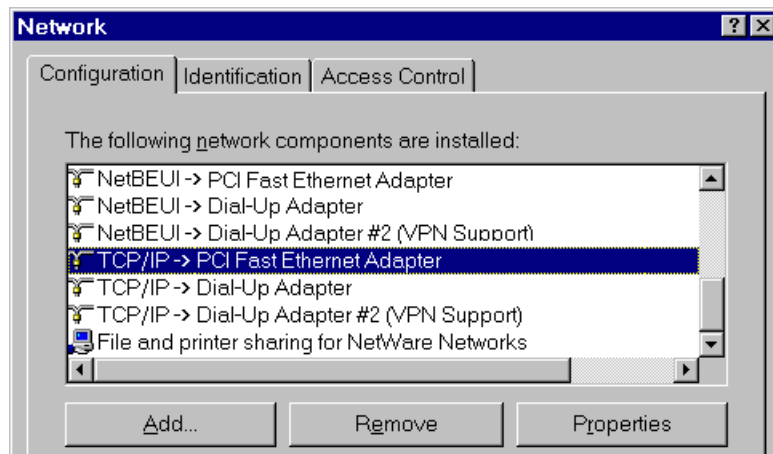


Figure 4: Network Configuration

The top line in the list (NetBEUI -> PCI Fast Ethernet Adapter) indicates that the NetBEUI protocol is installed on this PC. Your PC will show the name of the your Network card rather than "PCI Fast Ethernet Adapter".

The highlighted line (TCP/IP -> PCI Fast Ethernet Adapter) indicates that TCP/IP is installed. Your PC will show the name of the your Network card rather than "PCI Fast Ethernet Adapter".

2. If neither line is present:
 - Install the NetBEUI protocol by selecting *Add - Protocol - Microsoft - NetBEUI - OK*. You may be prompted for your Windows CD-ROM.
 - If required, you can also install TCP/IP. However, depending on your LAN environment, TCP/IP may require further configuration.
3. If either protocol is already installed, proceed with installation.

Windows Peer-to-peer Print Driver

With this printing method, print jobs are stored (queued) on your PC, and then sent to the Print Server when it is available.

Setup

Before performing the following procedure, the Print Server must be installed on your LAN, and configured as described in Chapter 3. Both the Print Server and the attached printer should be powered ON.

1. Insert the supplied CD-ROM into your drive. If the setup program does not start automatically, run *SETUP* in the root folder.
2. Select the *Installation* icon, then choose the *User* option in the "Setup Type" screen. This will install the *Peer-to-peer Print Driver*.
3. Follow the prompts to complete the installation. (Refer to the *Windows* section of *Chapter 8 - Troubleshooting* if there is a problem with the installation.)
4. The *Print Driver Setup* will then run.

5. The LAN will be searched for Print Servers, and a screen like the following will be displayed.
 - If desired, change the Workgroup name and click *Refresh*.
 - Select *List all Print Servers* to list all Print Servers, regardless of Workgroup.
 - The name of the attached printer will be displayed if possible. If "No printer" is displayed, check that the printer is properly connected and powered on.

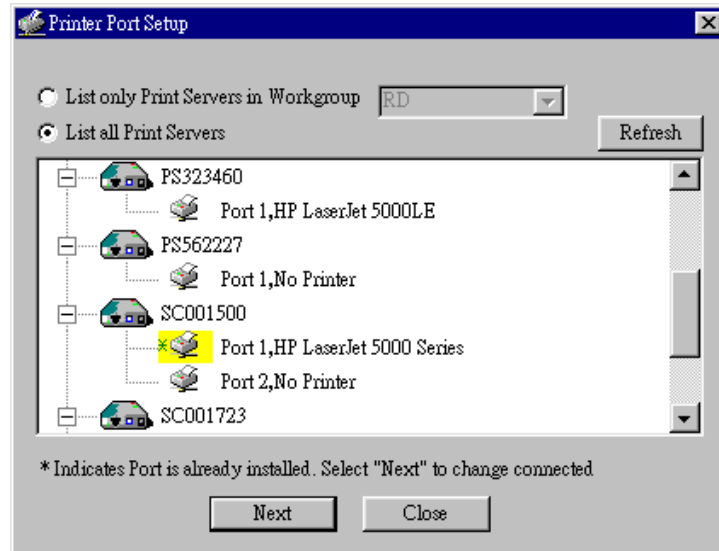


Figure 5: Add Port (Peer-to-peer Print Driver)

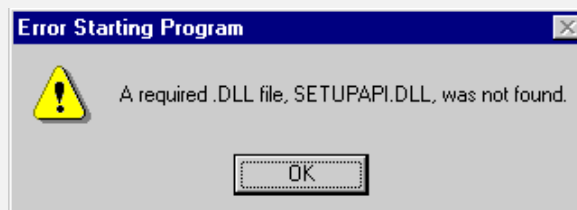
If your Print Server is not listed:

- Select "List all Print Servers", and click the "Refresh" button.
- Check that both the Print Server and the printer are properly connected, and powered on.
- Check that the Print Server has been configured, using the *Administrator* installation option on the CD-ROM, and the resulting *Setup Wizard*.
- If using TCP/IP, try installing the NetBEUI protocol. See the earlier section Checking your Network Protocols for details. Then uninstall and re-install the *Peer-to-peer Print Driver*.

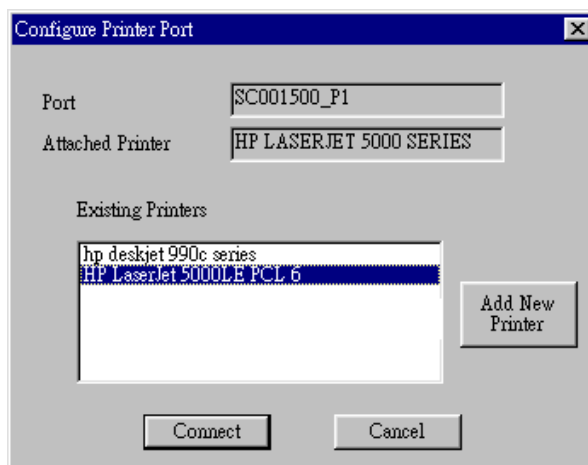
6. Select the desired printer port, and then click the "Next" button. A pop-up message will inform you if the port has been created successfully.



If you see the following error message, either install Internet Explorer 4 or later, or follow the procedure in the "Trouble Shooting - Windows" section of Chapter 8.



7. Then a screen like the following will be displayed:



8. Select the "Add New Printer" to run the Windows *Add Printer* wizard if the desired printer is not in the Existing Printers list. Follow the Wizard to complete the installation:
 - Select the correct Printer Manufacturer and Model, or use the "Have Disk" option if appropriate.
 - We recommend changing the Printer name to indicate which device is on. (e.g. HP2100 on SCA43600_P1)
 - If prompted about Sharing the printer, do NOT enable Sharing.
9. Click the "Connect" icon to complete the Installation. You can now print using this printer.
 - To install additional Printers, repeat steps 8 and 9.
 - Use the **Start** menu to run this program in future. The default installation is *Start - Programs - Print Server Utility - Print Server Setup*.

Management

- Print jobs can be managed like any Windows printer. Open the *Printers* folder (*Start - Settings - Printers*) and double-click any printer to see the current print jobs.
- If the printer attached to the Print Server is changed, just run this program again, and select the correct printer.
- To delete a port created by this setup program, use the Windows *Delete Port* facility:
 - Right-click any printer in the *Printers* folder, and select *Properties*.
 - Locate the *Delete Port* button. This button is on the *Details* or *Ports* tab, depending on your version of Windows.
- If the Print Server's IP Address is changed, and you can no longer print, delete the port (see procedure above) and re-install it.

Port Options

The options for the *Peer-to-peer Print Driver* are accessed via the *Port Settings* button.

Use *Start - Settings - Printers* to open the *Printers* folder, then right-click the Printer, and select *Properties*. The *Port Settings* button is on the *Details* or *Ports* tab, depending on your version of Windows.

An example screen is shown below:

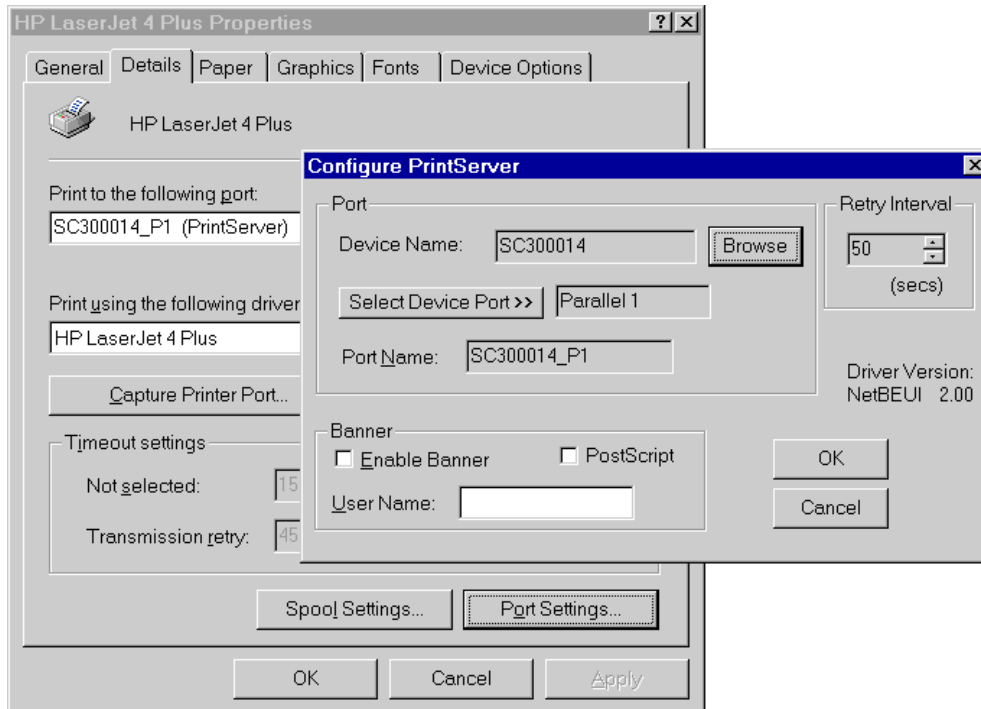


Figure 6: Port Settings (Peer-to-peer Driver)

Items shown on this screen are as follows:

Port	<p>If desired, click <i>Browse</i> to select a different Print Server. If the selected device has multiple ports, the <i>Select Device Port</i> button can be used to select the port.</p> <p>The <i>Port Name</i> can not be changed after installation. This name is shown in the Printer's <i>Properties</i>.</p>
Banner	<p>Check this option to print a banner page before each print job.</p> <ul style="list-style-type: none"> • If using a PostScript Printer, check the <i>PostScript</i> box. • The <i>User Name</i> will be printed on the banner page.
Retry Interval	<p>Sets how often Windows will poll the Print Server to establish a connection when the printer is busy. Increase this value if you get too many warning messages.</p>

Windows SMB Printing

This method requires no additional software to be installed, but the NetBEUI or TCP/IP protocol must be installed on your PC. Use the following procedure to install the Print Server's printer as a Windows SMB network printer:

1. Double-click the *Network Neighborhood* icon on the desktop.
2. On the *View* menu, select *Details*.
3. Locate the desired Print Server, as shown below:
 - If it is the same Workgroup as your PC, it will be listed on screen.
 - If it is in a different workgroup, double-click *Entire Network*, then double-click the appropriate Workgroup to open it.

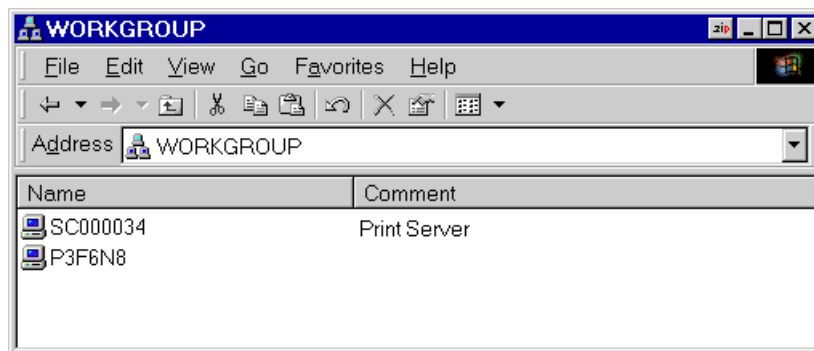


Figure 7: Network Neighborhood

4. Double-click the Print Server icon to view a Printer icon for each printer port. The "Comment" field may indicate what type of printer is connected to the port.
5. To install a printer, right-click the desired printer icon, and choose "Install", as shown below. This will start the *Add Printer* wizard.

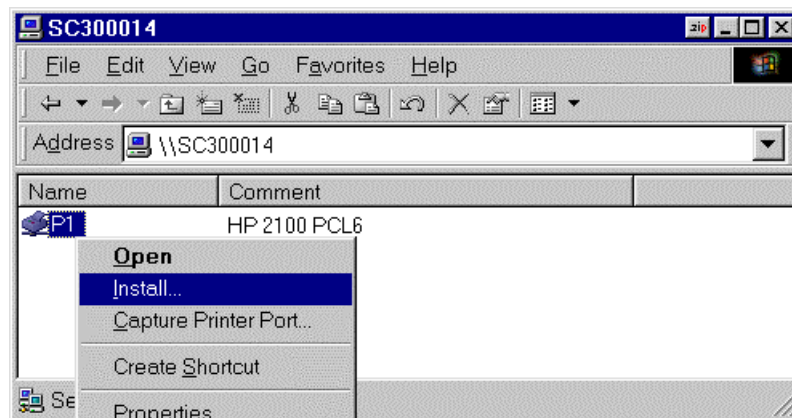


Figure 8: Install SMB Printer

6. Follow the prompts to complete the installation.
 - For information about the question "Do you print from MS-DOS programs?", see *Printing from MS-DOS Programs* below.
 - Select the Printer Manufacturer and Model to match the printer connected to this port on the Print Server, and complete the Wizard.
7. This printer will now appear in your *Printers* folder (*Start - Settings - Printers*) and can be used like any other printer. However, SMB printing is not suitable for large complex print jobs - you should use the *Peer-to-peer Print Driver* instead.

Printing from MS-DOS Programs

Windows can redirect print data from a parallel port on your PC (e.g. LPT1) to a network printer. This redirection is called "Capture Printer Port", and is useful for MS-DOS programs. The MS-DOS program is configured to use LPT1 (parallel port 1 on the PC), but Windows "captures" the print data and sends it to the network printer.

Capture settings can be set by:

- Saying "Yes" to the prompt "Do you print from MS-DOS programs?" when installing a Network Printer.
- OR, using the *Capture Printer Port* menu option shown in Figure 8 above.

This will result in a dialog like the following, where you can select the port on the PC to be captured. Normally, this will be LPT1 (parallel port 1 on the PC).

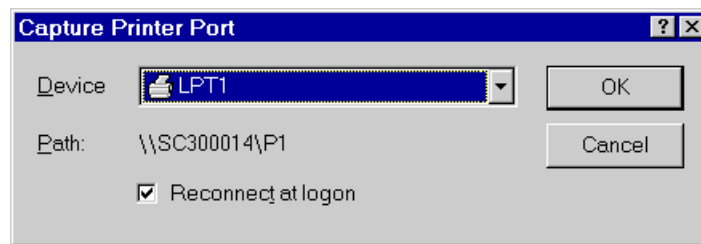


Figure 9: Capture Printer Port

The *File* menu in the *Printers* folder also has options for *Capture Printer Port* and *End Capture*.

Windows with Server-based Print Queues

1. Open your *Printers* folder, and start the *Add Printer Wizard*.
2. When prompted, select *Network Printer*.
3. When prompted for *Network Path or Queue Name*, click the *Browse* button, and locate the Server and Printer (or Print Queue) that your Network Administrator advised you to use.
4. Click OK, then *Next*.
5. Select the correct printer Manufacturer and Model, as advised by your Network Administrator, and click *Next*.
6. Follow the prompts to complete the Wizard.

The new printer will be listed with any other installed printers, any may be selected when printing from any Windows application.

Windows using NDPS

- Only the PS723H Super Print Server supports NetWare.
- Before using NetWare NDPS (NetWare Distributed Printing Service), one or more NDPS Printer Agents MUST be created on the NetWare Server. See Appendix B for details of this procedure.
- On your workstation, ensure that:
 - Novell IntranetWare Client v2.2 (or later) is installed on your PC.
 - You have access to the Novell Printer Manager utility (e.g. Nwpmw32.exe).

Procedure

1. Start the Novell Printer Manager utility.
2. Select *Printer - New* from the menu, and then click *Add*.
3. Select the required printer and click *Install*, then *Close*.

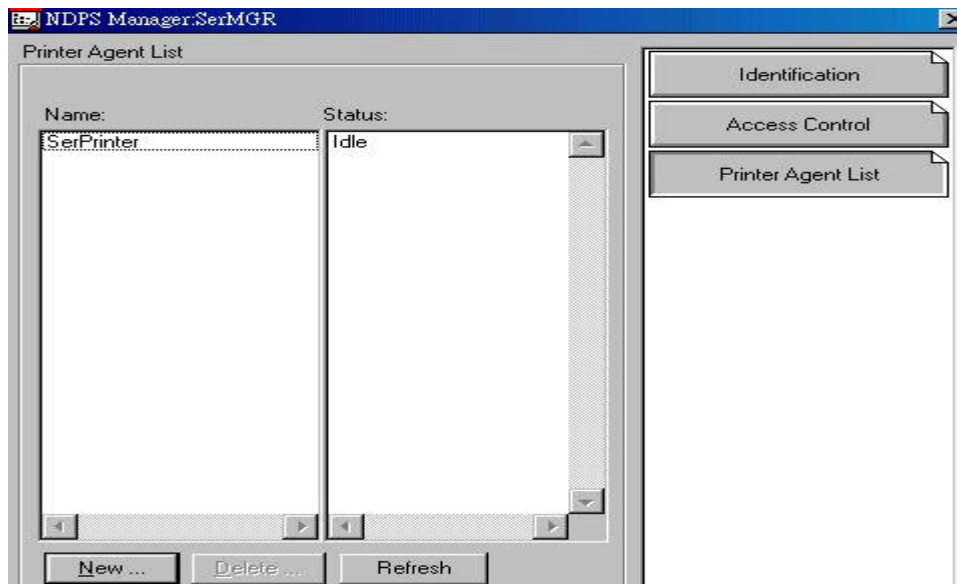


Figure 10: NDPS Manager - Client

4. The printer (e.g. SerPrinter in the example above) appears in the main Printer Manager window in the *Name* list, and is available for print jobs. Printer drivers are automatically downloaded from the server as required.
5. The printer will appear in your Windows printer list, and may be used from by any Windows application.

Macintosh (AppleTalk)

The Print Server supports AppleTalk (EtherTalk), PAP, ATP, NBP, ZIP and DDP protocols, enabling Macintosh computers on the network to view and use the Print Server as a regular AppleTalk printer.

Normally, no configuration is required.

Software Requirements

System 7.x OS or newer.

AppleTalk Setup

1. Click the apple icon and choose Control Panel.
2. Click Network.
3. Ensure that *EtherTalk* is selected under *AppleTalk Connection*.
4. Click *Chooser*. The Chooser panel will open.
5. Click on either the *LaserWriter 8* icon (recommended) or the *LaserWriter 7* icon. LaserWriter 8 makes use of the fonts installed in the printer itself, so the printing response time is quicker. LaserWriter 7 uses the fonts installed in the computer, which increases network traffic and takes more printing time.
6. Select a Print Server from the printer list by clicking on the appropriate name. The Print Server's name is recorded on a label on the bottom of the Print Server as "Server Name". This name consists of 8 digits and/or numbers.
7. Click on the *Close* box.
Configuration is now complete.

Printing

Printing with the Print Server installed in an AppleTalk network is identical to normal printing. Just select *File - Print* and choose the desired printer.

Chapter 5

5

BiAdmin Management Utility

This chapter describes the installation and operation of the BiAdmin Configuration & Management program.

Requirements

This program requires:

- Windows 95, Windows 98 or ME
- Windows NT 4.0, Windows 2000 or XP

Additional Recommendations:

- Screen resolution of 800 * 600 or greater.
- If using the PS723H and Novell NetWare, installation of Novell's *Client 32 for Windows* is strongly recommended. This will greatly enhance the ability to BiAdmin to work with NetWare servers.

Installation

Use the supplied CD-ROM. This CD-ROM will usually auto-run. If auto-run is disabled on your PC, run the SETUP program in the root folder.

- BiAdmin is always installed if the *Administrator* option is chosen.
- If using the *Custom* option on the CD-ROM, select *BiAdmin Management Utility*.

Operation

- Start the program by using the icon created by the setup program.
- When run, the program searches the network for all active Print Servers, and then lists them on screen, as shown by the example screen below.

Main Screen

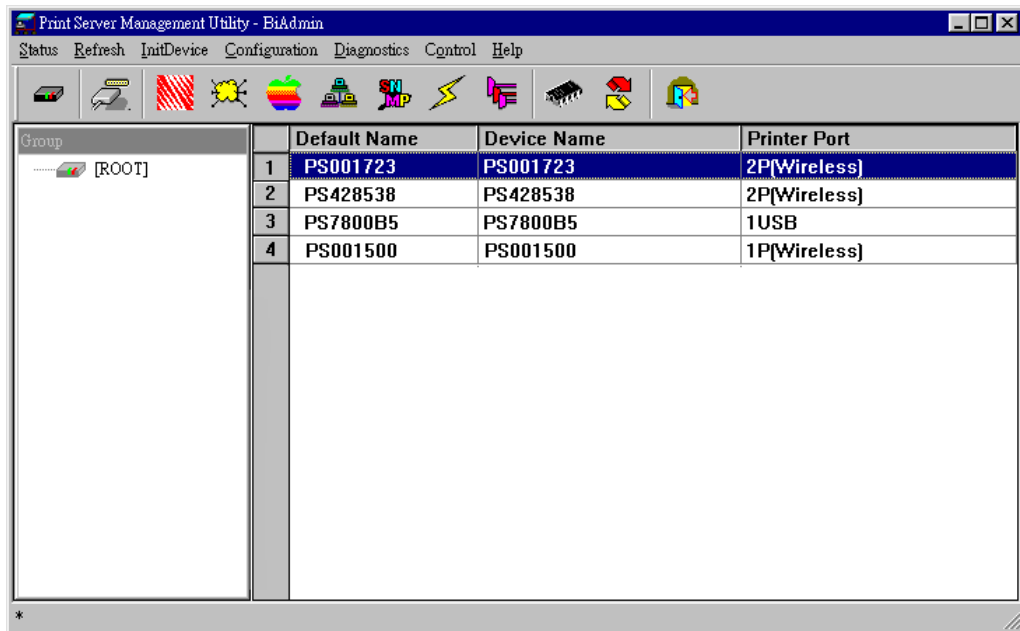


Figure 11: BiAdmin Main Screen

Groups

On the left side of the screen is a column for *Groups*. Each Print Server may be placed in a group, using the *Configuration-System Configuration-Groups* menu option.

- If a group is selected, only Print Servers in that group will be listed on the right side of the screen.
- By default, all Print Servers will appear in the [ROOT] group.
- A Print Server can only be a member of one (1) group, and will always be a member of a group.
- Use the *Configuration-System Configuration-Groups* menu option to select a group for the current Print Server.
- To create a new Group and add the current Print Server to it, just enter a group name in the dialog. (See example screen below)



Figure 12: System Configuration - Groups

Device List

On the right side of the screen is a list of all Print Servers found on the network. For each device, the following data is shown:

- **Default Name.** The *Default Server Name* is shown on a sticker on the base of the device.
- **Device Name.** If you have not changed the name, this will be the same as the *Default Server Name*.
- **Printer Port.** The number and type of ports is shown in the right column.

If the desired Print Server is not listed, try the following:

- Check that the device is installed and ON, then *Refresh* the list.
- Use the *InitDevice - Find* menu option to search for the Print Server. You need to know the *Default Name* of the Print Server. The *Default Server Name* is shown on a sticker on the base of the device.
- If the Print Server is on another LAN segment, use the *InitDevice - Attach Remote* menu option to locate and display the Print Server.
- For networks using ONLY TCP/IP, Print Servers without an IP Address will not appear. Use the *InitDevice - Set IP Address* menu option to assign an IP Address, and then *Refresh* the list. You need to know the *Default Name* of the unlisted device in order to assign an IP Address. The *Default Server Name* is shown on a sticker on the base of the device.

Status Icons

Once a Print Server has been selected, the Icons become active.



Note!

The icons provide status information as well as access to the selected Print Server settings. If an icon is grayed out, that option or protocol is unavailable.



Device Information

Menu equivalent: *Status - Backup/Restore Device Information*

All of the settings for the current device are displayed in a read-only scrollable list in the left panel.

You can use the "Save to File" and "Restore to Device" buttons on this screen to save a copy of the selected device's CONFIG file to your PC, or restore a previously saved file to the selected Print Server.



Printer Status

Menu equivalent: *Status - Port Status*

After selecting this icon, a *Detail* button will be available to show more information about the printer.

Configuration Icons

The following icons are available. Refer to the on-line help for details of the data on each screen.



NetWare

Menu equivalent: *Configuration - NetWare*

BiAdmin supports configuration of both the Print Server and Novell NetWare servers.

- You need to be logged into the NetWare server(s) with ADMIN rights.
- The screens you will see, and the operations which can be performed, depend on whether or not you have *Novell NetWare Client 32* installed.
 - If *Novell NetWare Client 32* is installed on your PC, BiAdmin allows you to configure both the Print Server and the NetWare server from within BiAdmin.
 - If this *Novell NetWare Client 32* is NOT installed, you can configure only the Print Server itself, not the NetWare server.
- The **NetWare Manual** (in the Manual\NetWare folder on the CD-ROM) contains detailed information on using BiAdmin with NetWare Servers.



TCP/IP Configuration

Menu equivalent: *Configuration - TCP/IP*

Selecting this icon will allow configuration for TCP/IP. Some models may have checkboxes for *DHCP*, *Bootp*, and *Rarp*. Some models may also display the setup data for the proprietary "Internet Printing" feature (printing via E-Mail).



AppleTalk Configuration

Menu equivalent: *Configuration - AppleTalk*

Generally, no Print Server configuration is required in order to use AppleTalk.



NetBEUI Configuration

Menu equivalent: *Configuration - NetBEUI*



SNMP Configuration

Menu equivalent: *Configuration - SNMP*

Configuration is only required if using Simple Network Management Protocol. See Chapter 7 for details.



Wireless Configuration

Menu equivalent: *Configuration - Wireless*

This Icon will be active if the selected device has the capability to serve as a Wireless Access Point or Wireless Stations for your LAN.



Logical Port Configuration

Menu equivalent: *Configuration - Logical Port*

Logical port (printers) can be used in the NetWare and Unix environments.

Other Icons



Upgrade

Menu Equivalent: *InitDevice - Upgrade*

This option allows you to upgrade the firmware for the selected Print Server. Before using this option, you need to obtain the .BIN file for the firmware upgrade, and copy it to the same directory as BiAdmin.



Refresh

Menu Equivalent: *None*

Select this icon to update the Print Server device listing after changing the name or IP Address.



Exit

Menu Equivalent: *Help - Exit*

Exit the BiAdmin program. This does not save any changes you have made; you must *Save to Device* on each screen.

Menu Options

Status Menu

Device Info	Same as <i>Device</i> button. Display all the configuration and status information about the selected Print Server. The data is presented in a scrolling, read-only window.
Port	Same as <i>Port Status</i> buttons.

InitDevice Menu

Attach Remote	This is used to connect to a Print Server device on another LAN segment. If your LAN does not have a Router, ignore this option.
Connected Protocol	This option allows you to designate which LAN protocol will be used for communication between the selected device and this application.

	You should select ONE protocol only.
Find	Use this option to use the IPX/SPX protocol to locate a Print Server on the LAN. Simply enter the <i>Default Name</i> of the Print Server you wish to locate. The <i>Default Server Name</i> is shown on a sticker on the base of the device.
Reset Device	This will cause the device to reboot. This should be done after making any configuration changes, or if the device stops responding after some problems.
Restore Factory Default	This will restore ALL device values to their factory defaults. To restore only the current screen, use the <i>Set to Default</i> button on the screen.
Set IP Address	For TCP/IP networks only: <ul style="list-style-type: none"> • If a Print Server does not appear on the main screen, use this option to set a Device IP Address, Gateway IP Address, and Network Mask to the Print Server. • This should only be necessary if your LAN is using ONLY the TCP/IP protocol. In other cases, BiAdmin will use IPX/SPX to locate the Print Server even if it doesn't have a valid IP Address. • To locate the Print Server, enter the <i>Default Name</i>. The <i>Default Server Name</i> is shown on a sticker on the base of the device. • Enter the required IP Address, Network Mask, and Gateway IP Address. • After saving the data to the device, refresh the listing. The Print Server should then appear in the device list on the main screen.
Upgrade	Upgrade the firmware in a Print Server. See Upgrade Icon for details.

Configuration Menu

The *System* option allows you to:

- Change the name of the selected Print Server.
- Change the "Group" for the selected Print Server.
- Set the Network Protocols used the selected Print Server. (Any protocols not used on your LAN may be disabled. This may improve performance.)

The *Configuration Menu* also contains selections for each of the following. These have the same effect as the corresponding Icon:

- NetWare
- TCP/IP
- AppleTalk
- NetBEUI
- Logical Port
- SNMP
- Wireless

Diagnostics menu

Print Test Page Use this option to print a test sheet from the selected Print Server port. The test print out will include status information.

Control Menu

Abort Mail Print Job This menu option refers to print jobs which have been received through the proprietary "Internet Printing" feature (printing via E-Mail). This menu option can be used to terminate a print job which is not printing correctly.



Note!

The "Abort Mail Print Job" menu option does NOT cancel IPP print jobs.

Web Interface Setup

This chapter explains how to use your Web Browser to configure the Print Server models

Overview

The Print Server models incorporate the HTTP server. This allows you to connect to the Print Server and configure it using your Web Browser. Most browsers should work, provided they support tables and forms.

Preparation

Because it supports dynamic IP Address allocation using DHCP, BOOTP, or RARP, the Print Server ships with an IP Address of 0.0.0.0. This is NOT a valid IP Address.

Therefore, you must do ONE of the following:

- Check your **DHCP server** (if you have one), and determine the IP Address allocated to the Print Server.
- Use the Windows setup wizard, the supplied **BiAdmin** program, or another utility to allocate a valid IP Address to the Print Server.
- Add an entry to the **arp** table to associate the hardware address of the Print Server with the desired IP address, as follows:

```
arp -s IP_Address 00:c0:02:xx:xx:xx (Unix)
```

```
arp -s IP_Address 00-c0-02-xx-xx-xx (Windows)
```

Where:

IP_Address is the IP Address you wish to assign to the Print Server.

00:c0:02:xx:xx:xx is the hardware address of the Print Server.

Example (Unix):

```
arp -s 192.168.0.21 00:c0:02:12:34:56
```

Example (Windows):

```
arp -s 192.168.0.21 00-c0-02-12-34-56
```



Note!

The hardware address of the Print Server is shown on a sticker on the base of the device.

The diagnostic print-out can also be used to find the Print Server's IP address and hardware address. (Press and hold the diagnostic button for 2 seconds.)

Connecting to the Print Server

1. Start your Web Browser.
2. In the *Address* box, enter *HTTP://* followed by the IP Address of the Print Server.

e.g.

```
http://192.168.0.21
```

3. You will then be prompted for the password. If no password has been set, just press ENTER.
4. Use the menu bar on the top of the screen to move about. Remember to save each screen before changing to a different screen.

Configuration Screens

AppleTalk

AppleTalk	The zone determines which Macs have access to the printer. Communication parameters must match your Mac computers.
AppleTalk zone:	AppleTalk zone <input type="text" value="*"/>
Communication:	Printer Object Type: <input type="text" value="LaserWriter"/> Communication Protocol: <input type="radio"/> ASCII <input checked="" type="radio"/> Binary
<input type="button" value="Get Defaults"/> <input type="button" value="Save"/> <input type="button" value="Cancel"/>	

Figure 13: AppleTalk Screen

AppleTalk zone	This determines which Apple systems can gain access to this printer.
Printer Object Type	These are text fields, used to describe the printer driver used for each port. The Print Server is designed to work with LaserWriter (or 100% compatible) printers.
Communication Protocol	Sets whether the port uses ASCII or Binary Communication Protocol.. The default is Binary.

NetBEUI

NetBEUI	Set the Workgroup name to match your PCs. Other settings normally do not need to be changed.
Domain Name:	<input type="text" value="Workgroup"/>
Options:	Response Time (0.1 secs): <input type="text" value="0"/> (0..255) Abort Print Job if Error: <input type="radio"/> Yes <input checked="" type="radio"/> No
<input type="button" value="Save"/> <input type="button" value="Cancel"/>	

Figure 14: NetBEUI Screen

Domain Name	Enter the designated work group to be serviced by the Print Server. This field is not case sensitive, so names with different case will be
--------------------	--

	considered to be the same name.
Response Time	Set how fast jobs are sent to the printer. The default value of zero (0) delay should be increased only if your printer cannot cope with no delays.
Abort Print Job if Error	YES terminates a print job if a printing error occurs. NO (default) will try to continue but may cause print errors. If print errors occur, try setting this value to YES.

NetWare (for PS723H only)

On the PS723H, the NetWare screen will be available.

NetWare	Configure for use with NetWare Servers. Using Print Server mode is recommended.
General:	NetWare mode: <input checked="" type="radio"/> Print Server Mode <input type="radio"/> Remote Printer Mode Frame types: <input checked="" type="checkbox"/> 802_2 <input checked="" type="checkbox"/> 802_3 <input checked="" type="checkbox"/> SNAP <input checked="" type="checkbox"/> Ethernet II
Remote Printer Mode:	NetWare Printer Server for parallel port 1: <input type="text"/> NetWare Printer Server for parallel port 2: <input type="text"/>
Print Server Mode:	NDS Tree Name: <input type="text" value="FAST"/> NDS Context: <input type="text" value=".TAIWAN.SERVER"/> Master File Server: <input type="text"/> (Bindery Mode only) NetWare Password: <input type="text"/> Job Notification: <input type="radio"/> Originating Workstation only <input checked="" type="radio"/> All log-ins Polling Queue Interval: <input type="text" value="1"/> (1..255) <input type="button" value="Save"/> <input type="button" value="Cancel"/>

Figure 15: NetWare Screen

General	
NetWare Mode	Select <i>Print Server</i> or <i>Remote Printer</i> , as appropriate. The default is <i>Print Server</i> .
Frame Type	Select the frame types used by your network. (Ethernet 802.2, Ethernet 802.3, Ethernet SNAP, and Ethernet II) By default, all frame types are enabled.
Remote Printer Mode	
Novell Printer Server for P1	NetWare print server to service the Print Server's parallel port 1.
Novell Printer Server for P2	NetWare print server to service the Print Server's parallel port 2 (P2), if fitted.

Print Server Mode	
NDS Tree Name (NDN mode only)	The File Server's NDS tree name. (root name)
Print Server NDS Context (NDS Mode only)	Path to the NDS Context. This does not include the Context itself, and each OU should be separated by a period. e.g. department . company
Master File Server (Bindery Mode only)	Name of the Print Server's master file server.
NetWare Password	The password on the NetWare Server. The Print Server device needs this password to connect to the NetWare server.
Job Notification	The options are: <ul style="list-style-type: none"> • Job notification at only the workstation where the print job originated. • Job notification at all workstations that you have logged into.
Polling Queue Interval	Defines how often the Print Server will poll the queues to be serviced.

SNMP (Simple Network Management Protocol)

SNMP	The data below is essential if using SNMP. The required MIB is on the CD-ROM. Save your data after each change.
General:	SysContact <input type="text" value="Jeff Bridges"/> SysLocation <input type="text" value="R305"/>
Management Stations:	Station No. <input type="text" value="1"/> <input type="button" value="Get Data"/> IP Address <input type="text" value="203"/> <input type="text" value="70"/> <input type="text" value="212"/> <input type="text" value="211"/> Community <input type="text" value="Public"/> Access <input type="text" value="Read-only"/>
Trap Receivers:	Receiver No. <input type="text" value="1"/> <input type="button" value="Get Data"/> IP Address <input type="text" value="203"/> <input type="text" value="70"/> <input type="text" value="212"/> <input type="text" value="211"/> Community <input type="text" value="Private"/> <input checked="" type="checkbox"/> Enable with Severity level: <input type="text" value="1"/> <input type="button" value="Save"/> <input type="button" value="Cancel"/>

Figure 16: SNMP Screen

SysContact	Text Field - Name of the contact person.
SysLocation	Text Field - Location of the contact person.

Management Stations	
Station No.	Select the Management station (1..4), and click the <i>Get Data</i> button to update the display for the selected item.
IP Address	Enter the IP Address of the management station, which has the SNMP program installed.
Community	This is a text field. Enter the name of the community.
Access	Select the desired level of access.
Trap Receivers	
Receiver No.	Select the Trap Receiver number (1..4), and click the <i>Get Data</i> button to update the display for the selected item.
IP Address	Enter the IP Address of the Trap Receiver, which will be sent the Trap message.
Community	This is a text field. Enter the name of the community.
Enable	Check to enable; select the severity level. Note: Currently, all traps are level 1.

TCP/IP

TCP/IP	Settings for the TCP/IP network protocol. Using a fixed IP Address is recommended.															
IP Address:	IP Address: <input type="radio"/> DHCP Client <input type="radio"/> Fixed IP Address: <table border="1"> <tr> <td>IP Address</td> <td>192</td> <td>168</td> <td>0</td> <td>1</td> </tr> <tr> <td>Subnet Mask</td> <td>255</td> <td>255</td> <td>255</td> <td>0</td> </tr> <tr> <td>Gateway Address</td> <td>0</td> <td>0</td> <td>0</td> <td>0</td> </tr> </table>	IP Address	192	168	0	1	Subnet Mask	255	255	255	0	Gateway Address	0	0	0	0
IP Address	192	168	0	1												
Subnet Mask	255	255	255	0												
Gateway Address	0	0	0	0												
Connection:	Delay before reconnection attempt (secs) <input type="text" value="2"/> (0..255) Number of reconnection attempts <input type="text" value="254"/> (0..255)															
<input type="button" value="Get Defaults"/> <input type="button" value="Save"/> <input type="button" value="Cancel"/>																

Figure 17: TCP/IP Screen

IP Address	IP Address assigned to this device. If using dynamic IP Addresses (DHCP, BOOTP, rarp), this should be left at 0.0.0.0.
Subnet Mask (Network Mask)	If the Router (Gateway) Address is 0.0.0.0, the Subnet Mask should also be left at 0.0.0.0. If you have a router, enter the Subnet mask for the segment to which the Print Server is attached.
Gateway Address	If your network segment has a router or gateways, enter its IP Address here. Otherwise, leave the address as 0.0.0.0.
Connection	
Delay before reconnection attempts	Sets how long the Print Server should wait before retrying a TCP/IP connection which is lost. Allowable values are from 0 to 255 seconds, with 2 as the default.

Number of reconnection attempts	Set how many attempts at reconnection will be made. After that, the TCP/IP session will be terminated. Allowable values are from 0 to 255, with 254 as the default.
--	--

Configure Server

Configure Server	The password protects the configuration data. Unused protocols can be disabled.
Print Server Name:	Print Server Name: <input type="text" value="AdminLaser"/>
Password:	Device Password: <input type="password" value="*****"/> Verify Password: <input type="password" value="*****"/>
Protocols:	Enable: <input checked="" type="checkbox"/> Appletalk <input checked="" type="checkbox"/> NetBEUI
	<input type="button" value="Save"/> <input type="button" value="Cancel"/>

Figure 18: Configure Server Screen

Print Server Name	Change the default name if you wish. The new name must not contain any spaces or blanks.
Password	Enter the device password, and again in the <i>Verify</i> field. Once a password is entered, it is required in order to gain access and change the configuration.
Enable Protocols	Non-TCP/IP protocols may be disabled if they are not required on your LAN.

Wireless Configuration - PS723H

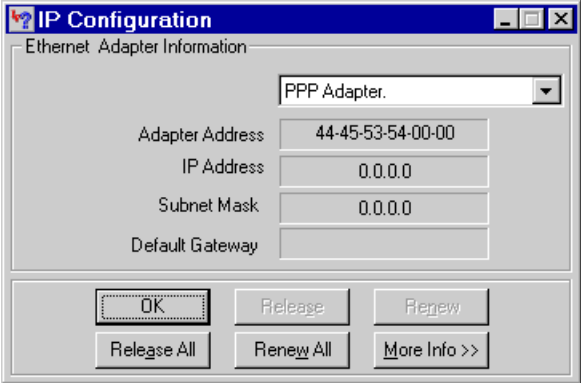
On the PS723H, this Wireless screen will be available.

The settings on this screen must match the other Wireless stations in order for communication to occur.

Wireless		SSID and WEP settings must match the Wireless stations using this Access Point.	
Configuration:	Regulatory Domain:	USA	
	Station Name:	SC000014	
WEP Data Privacy:	SSID (Service Set Identifier)	<input type="text" value="wireless"/>	
	Channel No:	<input type="text" value="3"/>	
	All devices must use the same SSID.		
	<input type="radio"/> Off - no data encryption		
<input type="radio"/> 64 Bit Encryption using this key table	Key 1:	<input type="text"/>	
	Key 2:	<input type="text"/>	
	Key 3:	<input type="text"/>	
	Key 4:	<input type="text"/>	
<input type="radio"/> 128 Bit Encryption using this key	<input type="text"/>		
	WEP Authentication:	<input type="text" value="Open System"/>	
Wireless Stations:	Access Permission:	<input type="radio"/> No access - block everyone	
		<input type="radio"/> Allow everyone access	
		<input type="radio"/> Only allow access if on this list	
	Existing Stations:	<input type="text" value="44.45.53.54.00.00"/>	<input type="button" value="Delete"/>
	New Station:	<input type="text"/>	<input type="button" value="Add"/>
		<input type="button" value="Save"/>	<input type="button" value="Cancel"/>

Figure 19: Wireless Screen (for PS723H)

Configuration	
Regulatory Domain	It is illegal to use this device in any location outside of the regulatory domain.
Station Name	This is the same as the <i>Device (Host) Name</i> on the WAN screen. On your PC, some Wireless status screens may display this name as the Access Point in use.
SSID (ESSID)	To communicate, all Wireless stations MUST use the same SSID/ESSID. The default value is wireless . Note! The SSID is case sensitive.
Channel No.	The default Channel for the USA and Canada is 3. Select the value you wish to use on your Wireless LAN. If you experience lost connections and/or slow data transfers you may need to experiment with different channels to see which is the best.
WEP Data Privacy	
Off	If OFF (default), data is NOT encrypted before being transmitted.
64 Bit Encryption	If selected, data is encrypted, using the default key, before being transmitted. The receiving station must be set to 64 Bit Encryption, and have the same Key value in the same position in its key table. Otherwise, it will not be able to decrypt the data. Default Key Select the key you wish to be the default. Transmitted data is ALWAYS encrypted using the Default Key; the other Keys are for decryption only. Key Table: This table is used when Encrypting and Decrypting data. All stations, including this Access Point, always transmit data encrypted using their default key. The key number (1, 2, 3, 4) is also transmitted. The receiving station will use the key number (1, 2, 3, 4) to determine which key value to use for decryption. If the key value does not match the transmitting station, decryption will fail. The easiest way to ensure there are no problems is to have every Station, including the Access Point, use the same key table (all entries identical). Then, it does not matter which key is used as the default key.
128 Bit Encryption	If selected, data is encrypted using the key before being transmitted. The receiving station must be set to use 128 Bit Encryption, and have the same Key value. Otherwise, it will not be able to decrypt the data. Key Enter the key value you wish to use. Other stations must have the same key
WEP Authentication	Options are "Open System" or "Shared Key". Some Wireless cards do not support both methods. Check your Wireless card's documentation to determine the correct value. Ensure that all Wireless stations use the same setting as the Access Point.

Wireless Stations	
Access Permission	<ul style="list-style-type: none"> • "No access - block everyone" prevents this device being used as a Wireless Access Point. However, Wireless users can still access the connected printer or printers. (They must have the correct SSID.) • If "Allow Everyone access" is selected, no check is performed on the station address before allowing it to use this Access Point. • If "Only allow access if on this list" is selected, then a Wireless station must be an address which occurs in the address list, or it will not be allowed access.
Existing Stations	This lists the Wireless stations you have entered. If you have not entered any stations, this list will be empty.
New Station	<p>To add a new station to the list, enter its address here, and click the <i>Add</i> button. The address will look like this example:</p> <p style="text-align: center;">10:98:10:98:10:91</p> <p>On Windows, you can determine the address using <i>WinIPCfg</i>, as follows:</p> <ul style="list-style-type: none"> • Use <i>Start - Run</i> to open the "Run" dialog. • Type WINIPCFG and press Enter (or click OK). • WinIPCfg will then run, as shown below. <div style="text-align: center;">  </div> <ul style="list-style-type: none"> • Select your Wireless adapter from the drop-down list. The address is shown on the <i>Adapter Address</i> field.

Wireless Configuration - PS7100

On the PS7100, this Wireless screen will be available.

The settings on this screen must match the other Wireless stations in order for communication to occur.

Wireless		SSID and WEP settings must match the Wireless stations using this Access Point.	
Configuration:	Regulatory Domain:	USA	
	Station Name:	SC000014	
WEP Data Privacy:	SSID (Service Set Identifier)	<input type="text"/>	
	Channel No:	1	
	Network Type:	Infrastructure	<input type="button" value="Link Info"/>
	<input type="radio"/> Off - no data encryption		
	<input type="radio"/> 64 Bit Encryption using this key table	Key 1:	<input type="text"/>
		Key 2:	<input type="text"/>
		Key 3:	<input type="text"/>
		Key 4:	<input type="text"/>
	<input type="radio"/> 128 Bit Encryption using this key	<input type="text"/>	
		WEP Authentication:	Open System
		<input type="button" value="Get Defaults"/>	<input type="button" value="Save"/> <input type="button" value="Cancel"/>

Figure 20: Wireless Screen (PS7100)

Configuration	
Regulatory Domain	It is illegal to use this device in any location outside of the regulatory domain.
Station name	This is the same as the <i>Device (Host) Name</i> on the WAN screen. On your PC, some Wireless status screens may display this name as the Access Point in use.
SSID (ESSID)	To communicate, all Wireless stations MUST use the same SSID/ESSID. The default value is <code>null</code> . Note! The SSID is case sensitive.
Channel No.	The default Channel for the USA and Canada is 3. Select the value you wish to use on your Wireless LAN. If you experience lost connections and/or slow data transfers you may need to experiment with different channels to see which is the best.
Network Type	Select the correct value for your Wireless LAN. <ul style="list-style-type: none"> • 802.11 Ad-hoc mode is used when there is no Wireless Access Point, and each Wireless station communicates directly with other Wireless stations. This is the current standard. • Ad-hoc mode is used when there is no Wireless Access Point, and each Wireless station communicates directly with other Wireless stations. This is the older standard. • Infrastructure mode is used when each Wireless station connects to the Wireless Access point. This also provides access to the wired LAN.
Link Info Button	Click this button will open the sub screen.
WEP Data Privacy	
Off	If OFF (default), data is NOT encrypted before being transmitted.
64 Bit Encryption	If selected, data is encrypted, using the default key, before being transmitted. The receiving station must be set to 64 Bit Encryption, and have the same Key value in the same position in its key table. Otherwise, it will not be able to decrypt the data. Default Key Select the key you wish to be the default. Transmitted data is ALWAYS encrypted using the Default Key; the other Keys are for decryption only. Key Table: This table is used when Encrypting and Decrypting data. All stations, including this Access Point, always transmit data encrypted using their default key. The key number (1, 2, 3, 4) is also transmitted. The receiving station will use the key number (1, 2, 3, 4) to determine which key value to use for decryption. If the key value does not match the transmitting station, decryption will fail. The easiest way to ensure there are no problems is to have every Station, including the Access Point, use the same key table (all entries identical). Then, it does not matter which key is used as the default key.

128 Bit Encryption	<p>If selected, data is encrypted using the key before being transmitted. The receiving station must be set to use 128 Bit Encryption, and have the same Key value. Otherwise, it will not be able to decrypt the data.</p> <p>Key Enter the key value you wish to use. Other stations must have the same key</p>
WEP Authentication	<p>Options are "Open System" or "Shared Key". Some Wireless cards do not support both methods. Check your Wireless card's documentation to determine the correct value. Ensure that all Wireless stations use the same setting as the Access Point.</p>

Other Screens

Server Status

This screen shows server system data and the current settings for all of the other screens. It is read-only; no data can be input on this screen.

Printer Status

This screen displays the current status of each port. For each port, the following data is listed:

- **Connected Printer** - the model name of the printer connected to the port, if the printer name is known. (If the printer is not bi-directional, this information is unavailable.)
- **Status** - the current status of the printer (On-line, Off-line, Out of paper)
- **Printing Information** - this will show either *Idle* or *Printing*.

Logical Printers

Logical Printers (ports) can be used under Unix or NetWare. For each Logical Printer, the following fields are available:

Logical Printer (Port)	<p>Select the Logical Printer Port you wish to configure. (L1 to L3 or L1 to L8, depending on your model) Click the Get Data button to update the display with the current data for the selected logical printer.</p>
Pre-string	<p>The printer control string (in hex) to be sent to the printer before each print job. This string cannot exceed 15 characters.</p>
Post String	<p>The printer control string (in hex) to be sent to the printer after each print job. This string cannot exceed 15 characters.</p>
Convert LF to CR+LF	<p>If checked, LF (line feed) characters are changed to CR+LF (carriage return + line feed).</p>

Chapter 7

Special Features

7

This chapter covers the special features of the Print Server.

Overview

The Print Server has three (3) special features:

- IPP (Internet Printing Protocol) support
- Proprietary *Internet Mail Printing* system.
- SNMP (Simple Network Management Protocol) is fully supported by all models.

Internet Printing Protocol (IPP)

IPP (Internet Printing Protocol) is a new standards-based system to allow remote printing from a PC to any accessible printer. Normally, the printer will be attached to a computer or other device which functions as an **IPP Server**.

For client PCs, it is necessary to install a compatible **IPP Client** program. The Client must also know the IP Address or URL or the IPP Server.

IPP Server Configuration

The Print Server contains the necessary firmware to act as an **IPP Server**. No additional configuration is necessary. However, the following requirements must be met.

- The Print Server must have a valid IP Address. For printing via the Internet, the Print Server's IP Address must be external (allocated by your ISP), rather than an IP Address on your local LAN.
- Any Router, Gateway or Firewall linking your LAN to the Internet must NOT block the IPP protocol.
- You must advise clients of the correct URL or IP Address of the IPP Server. To use a URL rather than an IP Address, you need to register the domain name for the URL.
- Unless clients are using Windows 2000, you must provide your clients with the supplied IPP Client software. If it is not convenient to provide the CD-ROM, supply the IPP_CLIENT.EXE file, located in the IPP folder.

IPP Client Setup - Windows 95/98/ME/NT 4.0

The IPP Client Software can be installed on any of the following systems:

- Window 95/98/ME
- Windows NT 4.0

Installing from the CD-ROM

1. Insert the CD-ROM in your drive. If the program does not start automatically, run the SETUP program in the top-level folder.
2. Follow the prompts until you reach the *Select Installation* screen, and select *IPP Client*.
3. At the next screen, select the *Install IPP Client* option.
4. Click *Next*, and step through the remaining screens to complete the installation.

Installing using IPP_CLIENT.EXE

1. Run this program to unzip the included files.
2. The IPP Setup program will then run.
3. Follow the prompts to complete the installation.

IPP Client Configuration (Windows 95/98/ME/NT 4.0)

1. Run the "Add IPP Port" program entry created by the installation. A screen like the following will be displayed.

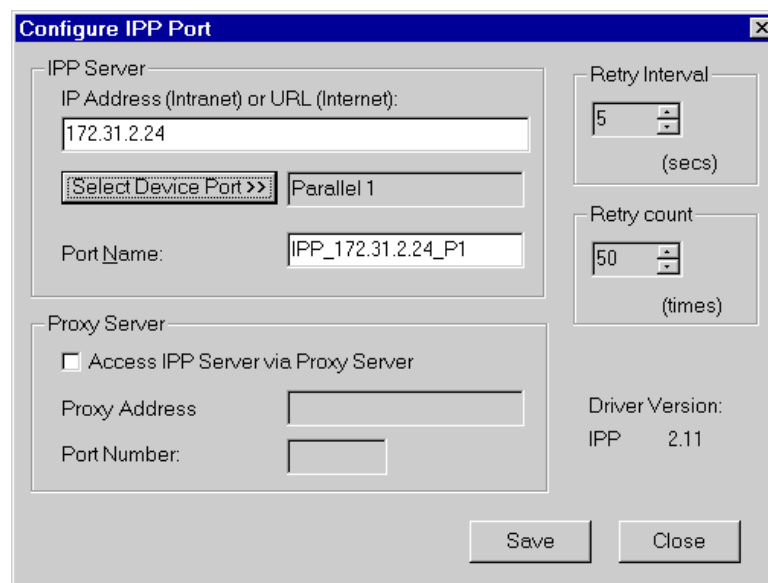


Figure 21: IPP Port

2. If Internet access from your location is via a Proxy Server, check *Access IPP Server via Proxy Server*, and enter details of your Proxy Server. (This will be the same as your Browser configuration.)
3. Enter the IP Address or URL of the IPP Server.
4. Click *Select Device Port* to view the available ports on the IPP Server, and select the appropriate port. A connection to the IPP Server will be established at this time.
5. Click *Save* to create the IPP port on your system. You will see a message confirming that the port has been created, then the following dialog:

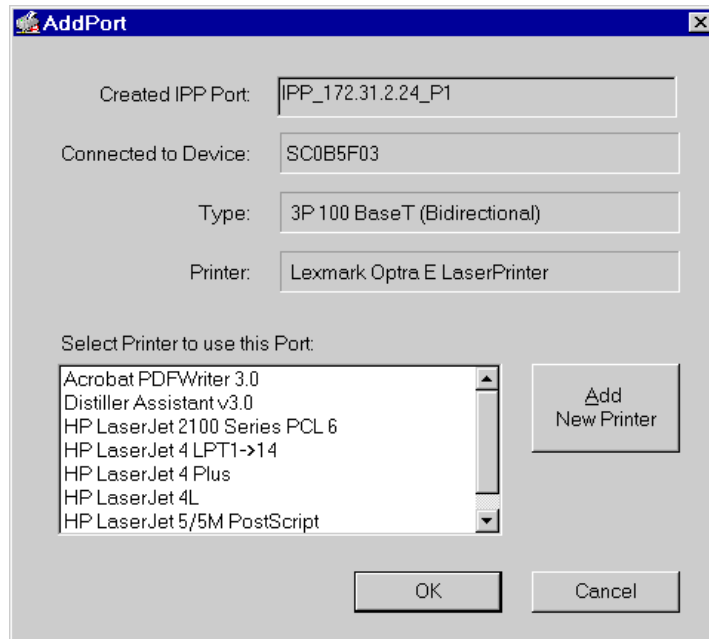


Figure 22: Select Printer for IPP Port

6. Either select an existing printer to use the new port, and click OK.

OR

Click the *Add New Printer* button to create a new printer to use the IPP port. This will start the *Add Printer* wizard. Follow the prompts to complete the process. Ensure that the new printer uses the IPP port.

Installation is now complete.

- To create additional IPP Ports, repeat the entire procedure.
- The Proxy Server and other options are set individually for each IPP Port.

Changing the IPP Port Settings

After the IPP port is created, you can reach the screen shown in Figure 21: IPP Port using the Windows *Port Settings* button:

1. Open the *Printers* folder (*Start - Settings - Printers*)
2. Right-click the IPP Printer, and select *Properties*.
3. Locate and click the *Port Settings* button (*Details* or *Port* tab, depending on your version of Windows).

There are 2 settings - *Retry Interval* and *Retry Count* - which can be adjusted if you have problems connecting to the IPP Server.

- **Retry Interval** sets the time interval (in seconds) between connection attempts. Increase this number if you have a poor connection, or the remote server is very busy.
- **Retry Count** sets how many connection attempts will be made. Increase this number if you have a poor connection, or the remote server is very busy.

IPP Client Setup - Windows 2000

Windows 2000 has its own IPP Client, and there is no need to install the supplied IPP Client Software. To use Windows 2000's IPP Client with the Print Server, follow this procedure:

1. Start the *Add Printer* wizard.
2. Select *Network Printer*, and click "Next" to see the *Locate your Printer* screen, as shown below.

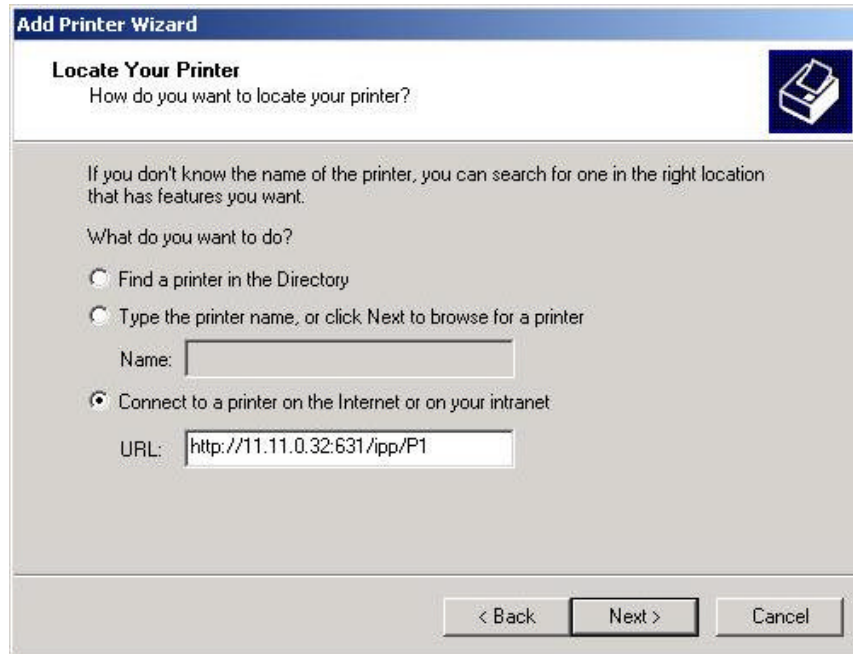


Figure 23: Windows 2000 - Locate your Printer

3. Select *Connect to a printer on the Internet or on your Intranet*, and enter the URL of the IPP Server as follows, where *ip_address* represents the IP Address of the IPP Server, and 631 is the port number.

Parallel Port 1	<code>ip_address:631/ipp/P1</code>
Parallel Port 2 (if exists)	<code>ip_address:631/ipp/P2</code>
Parallel Port 3 (if exists)	<code>ip_address:631/ipp/P3</code>



Note!

These entries are case sensitive. They must be entered as shown, with "ipp" in lower case, and P1, P2 and P3 in UPPER case.

4. If the connection can be established, and the printer on that port is on-line, the following dialog will be displayed.

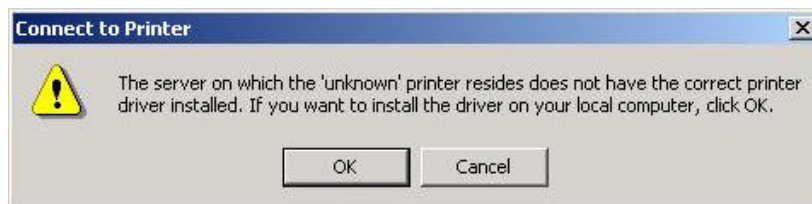


Figure 24: Windows 2000: No printer driver

5. Click "OK", and then select the printer manufacturer and model to match the printer connected to the port on the IPP Server.

6. Click "Next", and complete the Wizard.
The IPP printer is now ready for use.

Using IPP Printers

The IPP Printer can be selected and used like any other Windows printer. If the IPP Server is not on your network, your Internet connection needs to be active.

If you wish to check the availability of the remote IPP Server, you can use the *Query IPP Printer* program installed with *Add IPP Port*.

An IPP Server may be unavailable for any of the following reasons:

- It is powered off.
- A printer problem has caused the IPP Server to cease responding, and a restart (reboot) is required.
- The Server's IP Address has changed.
- The Internet connection for the IPP Server is down.
- Network congestion causes the connection attempt to time out.

If using the supplied IPP Client software, there are 2 settings - *Retry Interval* and *Retry Count* - which can be adjusted if you have problems connecting to the IPP Server.

See the previous section Changing the IPP Port Settings for details.

Internet Mail Printing

The Internet Mail Printing System allows users to print data to your printer across the Internet. Users send the Internet Print Server an E-Mail, with the print job normally sent as an attachment to the E-Mail. The Print Server will retrieve the E-Mail and print it.

System Requirements

Mail Server

- **Accessibility.** The Mail Server must be accessible by the intended clients or users. Normally, this means a permanent connection to the Internet.
- **Protocols.** The Mail Server must support the POP3 and SMTP protocols. The Internet Printing System uses these protocols and the most common E-Mail formatting standards:
 - MIME (Multipurpose Internet Mail Extensions)
 - Base64 Encoding (for mail attachments)

Internet Print Server

- **TCP/IP Protocol.** The LAN must use the TCP/IP protocol.
- **Mail Server Access.** The Print Server must be able to access the Mail Server using a single IP address.
- **Mail Account.** The Print Server must have a Mail Account. Users print by sending an E-Mail to this mail account.

User (Client) Requirements

- **Internet Connection.** Either through a LAN, or dial-up.
- **E-Mail address.** This is used to notify the user that their print job has been done, or if there are any problems.
- **Printer Driver.** Users must have a printer driver which matches the printer connected to the remote Internet Print Server.
- **Print Capture Software.** To print more than plain text, users require InterNet Printing Port software to capture the print job and convert it into an E-Mail attachment. The Internet Printing Port software is available for the following operating systems:
 - Microsoft Windows 95
 - Microsoft Windows NT 4.0 or later.

Internet Mail Printing Configuration

The Print Server must be configured with the data in the following table.

The supplied **BiAdmin** utility program, or the Web interface can be used to set the following entries on the TCP/IP screen.

Mail Server IP Address	The IP Address of the E-Mail Server used by the Print Server.
Mail Account	The name of the E-Mail Account used by the Print Server.
Mail Account Password	Enter the password for the above Mail Account here.
Check Mail Interval	Sets how often to check for mail. Values range from 0 to 65,535 minutes, with 0 meaning a continuous connection and 1 as the default.
Print Banner	If YES (default), a banner page is printed to identify the owner of the print job.
Redirect Mail Account	Jobs which can not be printed will be sent to this account. If blank, unprintable jobs will be discarded.
Default Printer Number	Printer number for all Internet print jobs. Only one port can be selected. Users on the LAN can also use this port.
Print every E-Mail	If ON, then all E-Mail received is printed. Otherwise, only E-Mail from the InterNet Printing Port will be printed.
Activate Response Mail	If YES, all print jobs receive an E-Mail response. If NO, only users who set this option in their InterNet Printing Port software receive an E-Mail.
Printer Model ID String	This text field identifies the printer used for Internet printing. This value is sent to remote users upon request.

User Software

The software provided for remote users (InterNet Printing Port) should be installed by everyone intending to use Internet printing. Otherwise, remote users can print correctly only if:

- They send an E-Mail directly to the Print Server Mail Account, using their normal E-Mail application.
- The E-Mail contains plain text only.
- The Internet Print Server is configured with *Print every E-Mail ON*.

Installation of the InterNet Printing Port software will create a new printer port. After attaching the correct printer to this port, users can print to the Internet Printer using any Windows application.

Installation - User Software

1. Run the InterNet Printing Port installation program SETUP.EXE
2. Default values for the installation are:
 - **Directory** - C:\Program Files\Internet_Printer
 - **Start Menu folder** - InterNet Printing Port Driver
3. You will then see the *Configure Port* screen, as shown in the following screenshot.

InterNet Printing Port Driver Configuration (ver 1.0)

Port Name : WAN

Remote Printer

E-mail address
PrintServer@customer.com

Your E-mail information

Mail Server Name or IP Address
pop3serv.mycompany.com

Your Internet E-mail address (e.g. username@company.com)
myname@mycompany.com

Retry Interval: 30 Sec.

Reply Notification E-mail

OK
Cancel
Help

Figure 25 InterNet Printer Port

4. The following data must be provided.

Port Name	Enter a descriptive name (e.g. "WAN") for the new printer port.
Remote Printer E-mail Address	The E-Mail address for the Internet printer. Your print jobs will be sent to this E-Mail address.

Mail Server Name or IP Address	This is the name or IP Address of your Mail Server. If you are on a LAN, ask the LAN Administrator. If using a dial-up connection, use the data provided by your ISP.
Your Internet E-mail Address	The normal address that people use to send you E-mail.
Retry Interval (Seconds)	If unable to connect to the E-Mail server, retry after this time period (1 to 255 seconds, 30 is usually OK).
Reply Notification Mail	Check to receive an E-Mail when your print job has been processed.

5. On completion, a new printer port will have been created.

Using the new Port

The Windows Control Panel is used to connect the correct printer to the InterNet Printing Port. In Windows 95/NT, the procedure is:

1. Select the Printer which matches the remote printer, and then choose *Properties*, as shown in the example below.

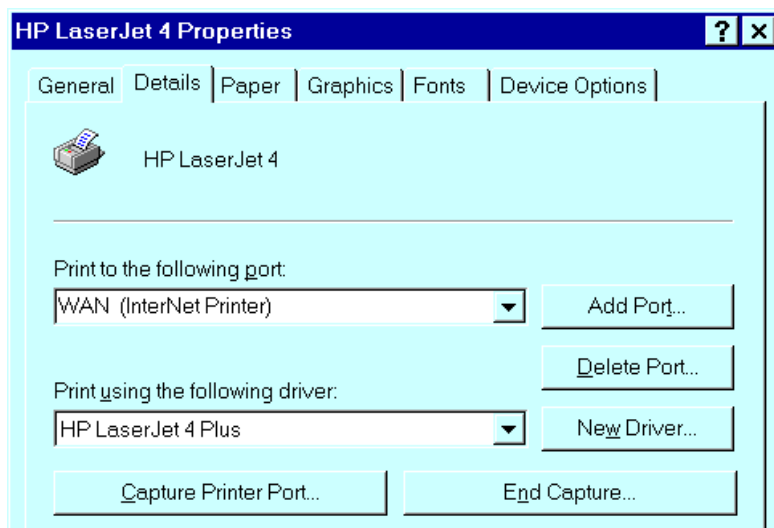


Figure 26 InterNet Printer Properties

2. Select the new port - WAN (InterNet Printer) in the example - as the port for this printer.
 - If you do not have the correct printer driver, or you wish to create another printer using an existing driver, use the Windows *Add Printer* facility.
 - Using the Windows *Port Settings* or *Configure Port* facility will reveal the same *Configure Port* screen shown in *Figure 25 InterNet Printer Port* on page 768.
 - If you wish to print to multiple Internet Printers, use the Windows *Add Port* facility to add a new InterNet Printer port. Ensure that the correct data is entered in each port, and that each port has a unique name.

Checking the Printer Driver

To make sure that the correct printer driver for the remote printer is installed on your system, you can use the InterNet Printing Port to send an E-Mail to the Internet Printer. The procedure is as follows:

1. Connect your default printer to the InterNet Printing Port.
2. Check that "Reply Notification Mail" in the InterNet Printing Port is ON.

3. From Notepad or another text editor, print a short message (e.g. "This is a test print") to the Internet Printer.

You will receive a reply E-Mail containing the "Printer ID" which will identify the printer attached to the Print Server. If this does not match the printer driver you are using, install the correct printer driver.

Printing through the Internet

1. Create or open the document you wish to print.
2. Select the Printer connected to the InterNet Printing Port.
3. If you do not have a permanent Internet connection, establish a connection now. (**Note:** The InterNet Printing Port will NOT establish a dial-up connection, but it will send the E-Mail the next time you are connected.)
4. Print the document.
5. The InterNet Printing Port will generate an E-Mail and send it to the remote printer. The document will be encoded and sent as an attachment to the E-Mail. You will see a progress screen similar to the example below:

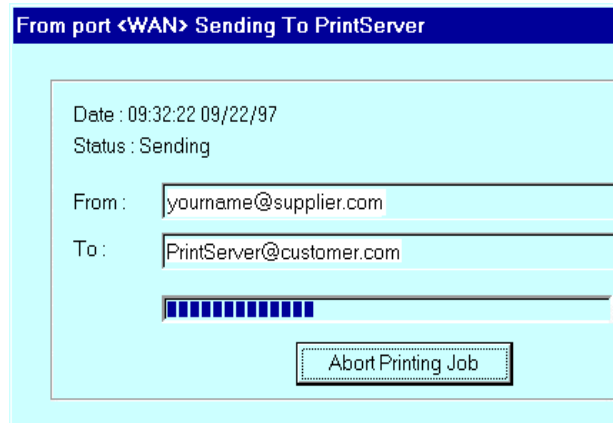


Figure 27 InterNet Printing Progress

6. Close the Internet connection if you opened it in Step 3.
7. If the "Notify after print job" option is set, you will receive an E-Mail when your job is printed.

Canceling a Print Job

Users cannot cancel a Print Job once it has been sent, but Print Jobs can be canceled at the Print Server. In **BiAdmin**, the *Control - Abort Mail Print Job* menu option can be used to cancel a print job which has already started printing.

SNMP

The Print Server supports SNMP (Simple Network Management Protocol). This allows network supervisors to monitor and control the Print Server using network management platforms such as HP OpenView, IBM SystemView, etc.

The appropriate MIB file must be imported into your SNMP management program using the *Import-Compile* command. Check your management program for details on this procedure. The MIB files are provided in the Mib folder on the CD-ROM, as follows:

Mib1p.mib	PS 7100
Mib2p.mib	PS723H

Configuring the Print Server for SNMP

Before using a SNMP Management station to manage the Print Server, the following settings should be assigned to it, in addition to the IP Address, Gateway Address, and Subnet Mask.

SNMP Settings

SysContact	Text Field - Name of the contact person.
SysLocation	Text Field - Location of the contact person.
Management Station IP Address(s)	Up to 4 Management Stations can be entered.
Trap Receiving IP Address(s)	Up to 4 Trap Receiving Stations can be entered.

Management Station Settings

For each Management Station, the following fields are available:

Access Permission	Options are: Read Only Read/Write Not Accessible
Community String	Leaving this blank will disable management by this station.

Trap Receiving Station Settings

For each Trap Receiving Station, the following fields are available:

Community String	Leaving this blank will disable management by this station.
Trap Enable	Use this option to Enable/Disable Trap Receiving by this station.
Trap Severity	In this version, all traps are level 1.

Chapter 8

Troubleshooting

8

This chapter describes some problem situations, which may arise, and the solutions to them.

Overview

If you encounter printing difficulties, please refer to the appropriate section. If, after following the advice in these documents, the Print Server still does not function properly, please contact your dealer for further advice.

Hardware & LAN Problems

Problem No. 1	All the Print Server's LEDs are off.
Solution No. 1	Check the power supply or power connection.
Problem No. 2	Print Server's status light continuously stays lit.
Solution No. 2	Reset Print Server by unplugging the power supply and plugging it back in.
Problem No. 3	Print Server's status light and power light stay on continuously and do not turn off.
Solution No. 3	Reset the Print Server by unplugging the power supply or by pushing the reset push button, if fitted.
Problem No. 4	The Print Server unit can not be found on the LAN, so configuration is not possible.
Solution No. 4	<p>If using 10/100BaseT:</p> <ul style="list-style-type: none"> • Check the Hub. The link LED for the port to which the Print Server is connected should be ON. If it is Off, there is a problem in the network cable. • On the Print Server, check the LED(s) next to the connector. If the LED is not ON (or neither LED is On, if there are 2), the network connection is not working. Check the Ethernet cable and connectors. <p>If using TCP/IP:</p> <ul style="list-style-type: none"> • Ensure that there are no routers between the Print Server and the PC used for configuration. • Ensure that the PC used for configuration has the TCP/IP network protocol installed. Test its network connection by seeing if you can locate other LAN devices from the PC. (e.g. Use <i>Network Neighborhood</i> and try to browser the network.)
Problem No. 5	I am using DHCP, and getting an IP Address conflict involving the Print Server.
Solution No. 5	If the Print Server is left on, but the DHCP server is turned off, then the Print Server will retain its IP Address without the DHCP Server being aware of it. Simply reset the Print Server so it will obtain a new IP

	Address. This problem would also arise if you assigned static IP Address, which is within the range used by the DHCP server. If so, use another address which is NOT within the range used by the DHCP server.
Problem No. 6	The Wireless is not working (for PS7100 only)
Solution No. 6	<ul style="list-style-type: none"> • Make sure the PCMCIA card is inserted (check the WLAN LED). • If the Print Server is in "Infrastructure" mode, make sure the LAN port is not connected. <p>Note! PS7100 will disable the wireless if LAN connection is detected.</p>

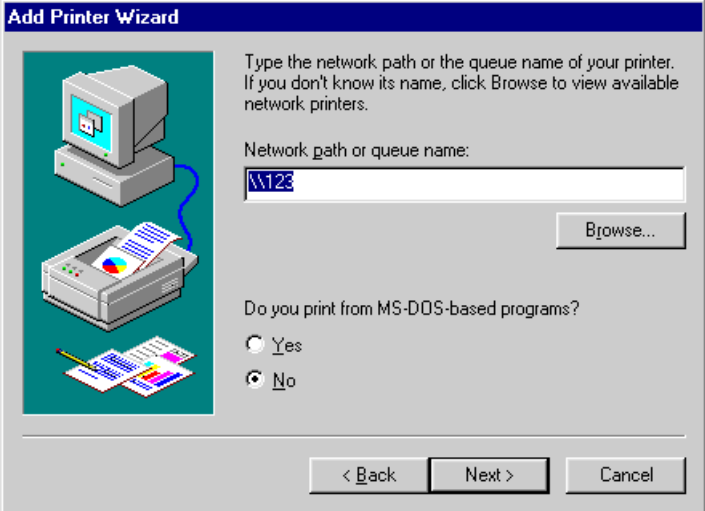
AppleTalk (Macintosh)

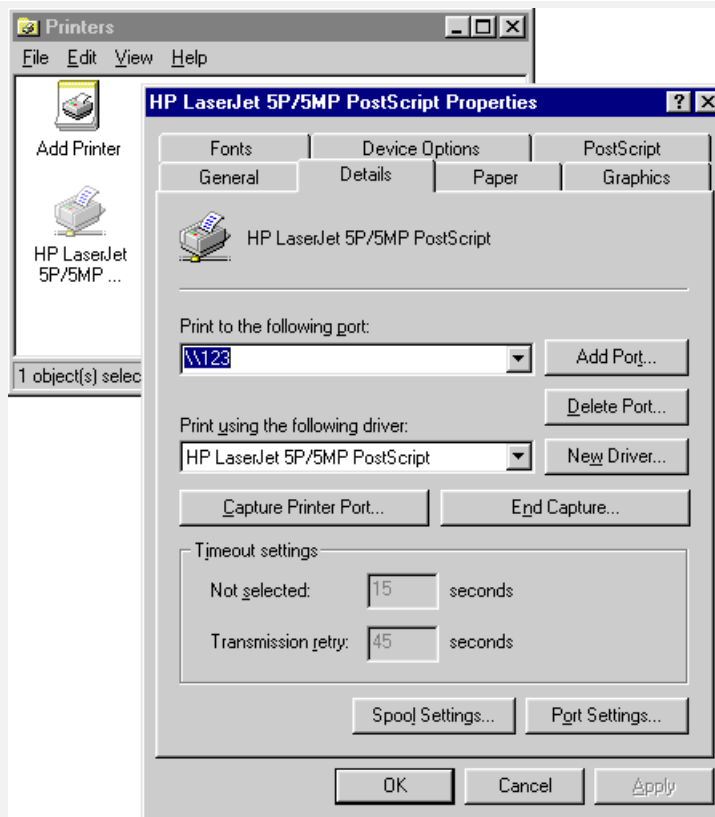
Problem No. 1	Why do I get an incorrect printout?
Solution No. 1	<p>Some possible reasons are:</p> <ul style="list-style-type: none"> • You may have chosen Binary encoding to print the file. Try to use ASCII encoding. • Some of the fonts, which are in your print file may not be supported by the printer. Try selecting LaserWriter 7 instead of LaserWriter 8.
Problem No. 2	Can't find the Print Server's name in the Chooser.
Solution No. 2	<p>Try the following:</p> <ol style="list-style-type: none"> 1. Make sure that AppleTalk is on (the button next to Active is highlighted in the Chooser). 2. Make sure the printer has been on and in the READY state for a few minutes. 3. Make sure the printer has not been renamed since its last appearance in the Chooser. 4. If the printer resides on a network with multiple zones, make sure the correct zone is selected from the AppleTalk Zones box in the Chooser.
Problem No. 3	My document didn't print to the right printer.
Solution No. 3	<p>Check the following:</p> <ul style="list-style-type: none"> • Another Print Server with the same name may have received your print job. Ensure all Print Servers have unique names. • Make sure your application output encode is set to ASCII. If not, change it to ASCII.
Problem No. 4	My file doesn't print with the correct fonts.
Solution No. 4	Try changing your printer driver to LaserWriter 7.
Problem No. 5	My EPS file doesn't print with the correct fonts.
Solution No. 5	This is a problem that occurs in some application programs. Try downloading the fonts contained in the EPS file before printing the saved EPS file.

Problem No. 6	I can't select the "Remaining from:" item in the print dialog box.
Solution No. 6	If you have selected the Layout value, "2 Up", or "4 Up", you cannot access the <i>Remaining from</i> item. Choose other selections.
Problem No. 7	A cover page prints either on the first or the last page of the document.
Solution No. 7	Select one of these solutions: <ul style="list-style-type: none"> • Turn the cover page feature off. • Insert extra page breaks in your document to avoid the cover page printing on the first or last page of your document. • Install the Apple LaserWriter 7 driver. You are having trouble printing with the Apple LaserWriter 8 driver.
Problem No. 8	Why do I have trouble printing with the LaserWriter 8?
Solution No. 8	Your application software may not be compatible with the LaserWriter 8 driver or your system may not meet the requirements of the LaserWriter 8 driver. Use the Apple LaserWriter 7 driver instead.
Problem No. 9	The colors on my printed output do not match the colors on my computer screen.
Solution No. 9	When the printer receives a color file, it tries to match the printed output color to the screen color. Sometimes the printer cannot match up the colors as closely as wanted. To alleviate this problem, perform the following steps: <ul style="list-style-type: none"> • Choose "Calibrated Color/Grayscale" in the <i>Print</i> pop-up menu in the <i>Print Options</i> dialog box. The printer will make adjustments to match the colors. • Check your monitor to make sure all settings (for example, brightness) are adjusted correctly.
Problem No. 10	When I send a print job, I get a PostScript Command error or no print out.
Solution No. 10	Check the communication protocols. The computer, Print Server and printer must all be configured to the same communication protocol. (either Binary or ASCII). To configure your system: <ol style="list-style-type: none"> 1. Choose which protocol you are going to use. You should check your printer; it may not give you a choice. 2. Set your printer to the correct protocol. 3. Use the computer's <i>Print</i> submenu to configure your computer to use the protocol you have chosen. 4. Configure the Print Server to use the same protocol as the printer and computer.

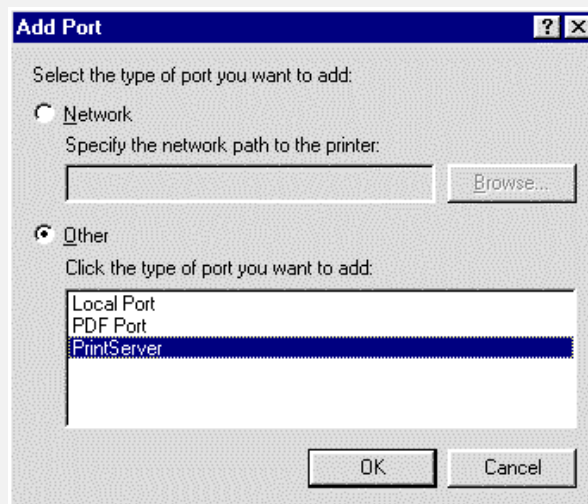
Problem No. 1	My Print Server cannot print the jobs sent to the print queue.
Solution No. 1	<p>Try the following:</p> <ol style="list-style-type: none">1. Check if the printer attached to the Print Server is on-line.2. Check if your Print Server is logged into the file server (See Problem 2 below.).3. Check the current status of the queues used by the Print Server, and ensure the queues are active.4. Check if the NetWare printer number is correct. 0 = parallel port 1 of the Print Server. 1 = parallel port 2 of the Print Server. 2 = serial port or parallel port 3.5. Check to see if the Print Server is a static queue server to the queue. Locate the Print Server Object, and check the <i>Queues Serviced by Printer</i>. Ensure that the correct queues are on the list.6. The total number of queues to be serviced may be over the limit of 56. If so, reduce the number of queues.
Problem No. 2	My Print Server is configured as a Novell Print Server, and cannot log in to a File Server.
Solution No. 2	<p>The following steps may solve this problem:</p> <ol style="list-style-type: none">1. Check the Novell file server's name. If it is over 20 characters long, rename it using no more than 20 characters.2. Check that the Print Server's configuration data, especially the password, is correct.3. Check the NetWare server. If using Bindery mode, check the master file server to see if the login status of the Print Server is <i>Ready</i>. If it is not, check the error message and perform the required corrective action.4. If the Print Server is servicing more than one file server, check to see that all required file servers are in the list of "File Servers To Be Serviced". If not, insert the required file server name to the list.

Windows Printing Problems

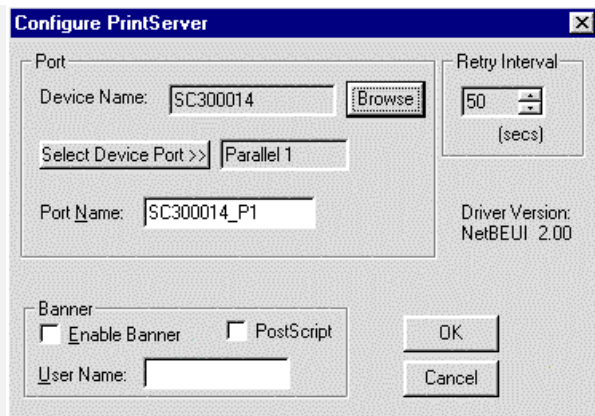
Problem No. 1	When I tried to install the Printing software for Peer-to-Peer printing, I received an error message and the installation was aborted.
Solution No. 1	<p>This may be caused by an existing installation of the printer port software. Before attempting another installation:</p> <ul style="list-style-type: none">• Remove the existing installation• Restart your PC <p>To remove an existing printer port installation:</p> <ol style="list-style-type: none">1. Open <i>Start - Settings - Control Panel - Add/Remove Programs</i>2. Look for an entry with a name like "Shared Port", "Shared Printer Port", "Print Server Driver" or "Print Server Port".3. Select this item, click "Add/Remove", and confirm the deletion.
Problem No. 2	On Windows 95, I installed the Print Port Driver for Peer-to-Peer Printing, but when I selected a port on a Print Server and clicked "Add", the printer was not installed.
Solution No. 2	<p>Try installing the Printer using the standard Windows tools, as follows:</p> <ol style="list-style-type: none">1. Start the <i>Add Printer Wizard</i>.2. Select <i>Network Printer</i> when prompted "How is the printer attached to your Computer?" and click Next.3. When prompted for the Network Path or Queue, enter a dummy value such as \\123, as shown below. (Do NOT select <i>Yes</i> for "Do you print from MS-DOS programs?")  <ol style="list-style-type: none">4. The printer wizard will display a message stating that "The Network Printer is off-line". This is OK. Continue the Add Printer Wizard until finished.5. Go to the Printers folder (<i>Control Panel-Printers</i>). The printer icon will be grayed out indicating the printer is not ready.6. Right-click the Printer, and select <i>Properties</i>. Then select the <i>Details</i> tab, as shown below.



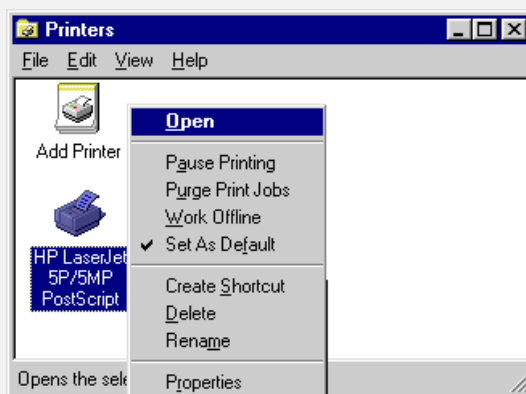
7. Click the *Add Port* button. On the resulting screen, select *Other*, then *Printer Server*, as the port to add, as shown below.



8. Click *OK* to see the *Print Port Configuration* screen, as shown below.



9. Click the *Browse Device* button, select the desired Print Server, and click OK.
10. Click OK to return to the Printers folders, and right-click on the Printer. Ensure that the *Work off-line* option is NOT checked.



The Printer should no longer be grayed out, and is ready for use.

Problem No. 3	I connected and configured a WPS (Windows Printing System) printer as described, but I can't get the print job to print.
Solution No. 3	<p>Printer drivers for WPS printers poll the printer before sending print data. Since the printer is networked, the printer is not found and no data is sent. The solution is to add your printer as a network printer as described in Solution 1 above.</p> <p>Note: The screens shown in Solution 1 are from Windows 95. Other versions of Windows may look slightly different, but the process is identical. If available, Sharing for the printer should NOT be enabled.</p>
Problem No. 4	When printing from some software applications such as Power Point, it takes a long time and the print out is incorrect.
Solution No. 4	<p>The problem is due to the printer, which is being configured to Start printing after the first page is spooled. To change this setting:</p> <ul style="list-style-type: none"> • Go to Control Panel - Printers and click on your printer. • Then select File - Properties - Details. • When the Details screen appears, click the <i>Spool Settings</i> button. • When the Spool Settings dialogue box appears, choose <i>Start printing after last page is spooled</i> and click OK.

Problem No. 5	A printing device connected to the Print Server port cannot print or prints garbage.
Solution No. 5	<p>Check the following:</p> <ul style="list-style-type: none"> • Cable connection between Print Server and printer. • Serial port configuration, if a serial device. • Printer driver in the application program or Windows matches the printer.
Problem No. 6	The <i>Configuration</i> button on the <i>Printer Status</i> screen in BiAdmin is grayed out, even though my printer is bi-directional.
Solution No. 6	The button is unavailable if the printer is busy. You must wait until the printer is idle.

Appendix A

Specifications



General Specifications

PS7100 Print Server	
Power Consumption	3w max.
External Power Adapter	12V DC
LEDs	4
Parallel Port	1 Centronic female DB-25 connector
Ethernet Connector	10/100BaseT
FCC / CE	Class B
PS723H Super Print Server	
Power Consumption	10w max
External Power Adapter	12V DC
LEDs	6
Parallel Port	2 Centronic female DB-25 connector, ECP compatible
Ethernet Connectors	10/100BaseT
Wireless Access Point	IEEE 802.11b compliant
FCC / CE	Class B

Environmental Specifications (all Models)	
Operating Temperature	0 ~ 40° C
Storage Temperature	-10 ~ 70° C
Shipping Temperature	-40 ~ 70° C
Operating Humidity	10 ~ 80%
Storage Humidity	5 ~ 90%
Shipping Humidity	5 ~ 100%

Parallel Port Pin Assignments

* Data signals will be driven by some but not all peripheral devices.

Pin	Signal Name	Direction
1	- Strobe	To printer
2	+Data 0	To printer
3	+Data 1	To printer
4	+Data 2	To printer
5	+Data 3	To printer
6	+Data 4	To printer
7	+Data 5	To printer
8	+Data 6	To printer
9	+Data 7	To printer
10	- ACK	To Server
11	+ Busy	To Server
12	+ Paper End	To Server
13	+ Select	To Server
14	- Auto Feed	To printer
15	- Error	To Server
16	- Init	To printer
17	- Select In	To printer
18-25	GND	Ground

Regulatory Approvals

PS723H, PS7100

FCC Statement

This equipment generates, uses, and can radiate radio frequency energy. It has been tested and found to comply with the limits for a Class B digital device, pursuant to Part 15 of the FCC rules. These limits are designed to provide reasonable protection against harmful interference in a domestic environment.

Operation is subject to the following two conditions:

- This device may not cause harmful interference.
- This device must accept any interference received, including interference that may cause undesired operation.

CE Marking Warning (PS723 only)

This is a Class B product. In a domestic environment this product may cause radio interference in which case the user may be required to take adequate measures.

Appendix B

Network Server Configuration

B

Windows NT Server

Preparing for TCP/IP Printing

If using Windows NT 4.0, Microsoft *TCP/IP Printing Support* must be installed.

- If it is already installed, proceed to *Adding a TCP/IP Remote Printer*.
- Otherwise, the procedure to install TCP/IP printing support is as follows.

Windows NT 4.0

1. Go to *Start-Settings-Control Panel-Network*.
2. Click the *Service* option and ensure that **Microsoft TCP/IP Printing** is enabled. If it is not enabled, select the *Add* option and enable it as usual.
3. If you added services in step 2, reboot the computer for the changes to take affect.

Adding a TCP/IP Remote Printer

Windows NT 4.0

1. Go to *Start-Settings-Printer* and invoke the *Add Printer* wizard.
2. When prompted with *This printer will be managed by*, select **My Computer** and click *Next*.

3. Select **Add Port...**, then select **LPR Port** and click **New Port**.
4. In the *Name of server providing lpd*: Dialog box, enter the Print Server's IP address.
5. In the Name of printer or print queue on that server dialog box, enter the appropriate logical printer number (L1..L3, or L1..L8, depending on the model) as previously configured on the Print Server.
6. Click OK. When returned to the Printer Ports window, simply select *Close* and then install your printer driver as usual.
7. When prompted whether or not the printer will be shared, select the **Sharing** radio button.
8. In the *Shared* dialog box, enter the shared printer name. (The shared name is how other users will see this printer.) Click OK to save and exit.

Client PCs can now be configured as described in *Chapter 4 - Client Configuration*.

Windows 2000 Server

1. Start the *Add Printer Wizard*, select *Network Printer*, then click *Next* to browse for the Print Server.
2. Locate and double-click the Print Server, select the desired port, and click *Next*.
The following message will be displayed:

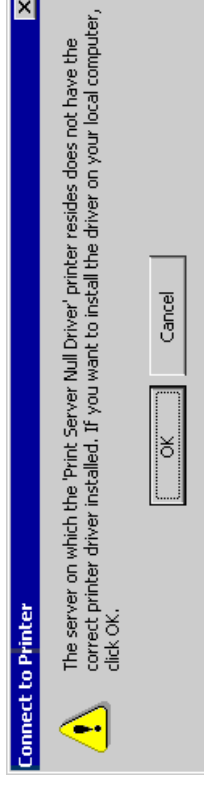


Figure 28: Windows 2000 Message

3. Click "OK", and select the correct Manufacturer and Model for this printer.
4. Follow the prompts to complete the installation.
5. In the *Printers* folder, right-click the new printer, and select *Sharing*.
 - Select "Shared As:" and enter an appropriate name for this printer. Users will see this name when browsing for the printer during installation.
 - If desired, click "Additional Drivers" and install printer drivers for other versions of Windows, such as Windows 98. This will assist users during the installation process.
6. Click OK to close this Window. Configuration is now complete.

Client PCs can now be configured as described in *Chapter 4 - Client Configuration*.

Novell NetWare

The Print Server fully supports both Bindery and NDS Novell systems.

With either Bindery or NDS, two (2) NetWare operating modes are possible –*Print Server* and *Remote Printer*. *Print Server* mode is recommended. Novell Distributed Printing Services (NDPS) under NetWare 5 is also supported.

Configuration Methods (Bindery or NDS)

The following configuration methods are available. In each case, you must be logged into the required NetWare Server with ADMIN rights. Also, if using Windows, Novell's **Client32** should be installed on your PC. Without Client32, only limited configuration changes can be made on the NetWare Server.

Setup Wizard

Using the Setup Wizard is recommended. This allows configuration of the Print Server in **NetWare Print Server Mode**, which is the recommended system.

BiAdmin

For more control and flexibility, or to use **NetWare Remote Printer Mode**, you can use the supplied BiAdmin management utility. Provided you have Novell's *Client 32* installed, BiAdmin will allow you to configure the NetWare Server as well as the Print Server.

- BiAdmin is installed by the *Administrator* menu option on the CD-ROM.
- See Chapter 5 for general information on using BiAdmin.
- The **NetWare Manual** (in the Manual\NetWare folder on the CD-ROM) contains detailed information on using BiAdmin with NetWare Servers.

Other Methods

If you are unable to use Windows-based programs for configuration, the following method is available to configure the Print Server:

Quickset	Command-line DOC program, intended only to configure the Print Server for use with NetWare V2, 3 and 4. This program also has a limited ability to configure the NetWare Server itself.
-----------------	---

- These program is provided on the CD-ROM, in the *Utility* folder.
- The documentation for the program is provided in sub-folders of the **Manual** folder on the CD-ROM.

Configuration Data

The Print Server requires the following "General" data, and the data for the mode (*Print Server* or *Remote Printer*) you are using.

General	
Device Name	The device name (Default Server Name) is shown on a sticker on the base of the device. Change this if you wish. The new name MUST NOT exceed 19 characters, nor contain any spaces.
Device Password	Default is NULL (no password).
NetWare Mode	<i>Print Server</i> or <i>Remote Printer</i> .
Frame Type	Select the frame types used by your network. (Ethernet 802.2, Ethernet 802.3, Ethernet SNAP, and Ethernet II) By default, all frame types are enabled.
Novell Remote Printer Mode	
Novell Printer Server for P1	NetWare print server to service the Print Server's parallel port 1.
Novell Printer Server for P2	NetWare print server to service the Print Server's parallel port 2 (P2).
Novell Print Server Mode	
NDS Tree Name	Not applicable. (NetWare NDS mode only)
Print Server NDS Context	Not applicable. (NetWare NDS mode only)

Master File Server (Bindery mode only)	Name of the Print Server's master file server.
Polling Queue Interval	Defines how often the Print Server will poll the queues to be serviced.
Job Notification by Connection ID	Set to <i>Yes</i> to receive a job notification at only the workstation where the print job originated, <i>No</i> to receive a job notification at all workstations that you have logged on.
NetWare Password	The password on the NetWare Server. The Print Server device needs this password to connect to the NetWare Server.

Setup for NDPS (NetWare 5)

Overview

- The Print Server must be configured as a valid device on your TCP/IP network.
- To use NDPS (Novell Distributed Printing Services), the Novell server must be running Novell NetWare 5, and the PCs (clients) must be running IntranetWare Client V2.2, or later.

The following procedure is designed to enable **Public Access Printing** under NDPS. *Public Access Printing* allows anybody on the network to access the printer.

Creating an NDPS Manager Object

If an NDPS Manager Object already exists, skip this procedure and proceed to *Creating an NDPS Printer Agent*.

1. Login to NetWare 5.0 Server as Admin and start the NetWare Administrator program Nwadmn32.exe.
2. Select the container on NetWare Administrator where you want the NDPS Manager object to reside. (e.g. TeSupp)
3. Select *Create - Object* from the menu bar to view the *New Object* dialog.
4. Select *NDPS Manager* as the object to create. The *Create NDPS Manager Object* window shown below will appear.

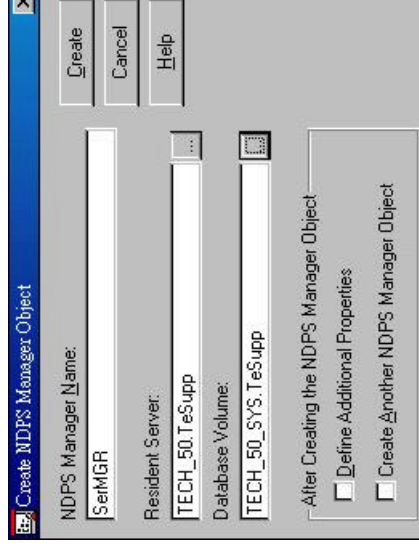


Figure 29: Create NDPS Manager Object

5. Type a name in the NDPS Manager Name. (e.g. SerMGR in Figure 1 above)
6. Browse the Resident Server and select where you want the NDPS Manager object to be assigned. (e.g. TECH_50.TeSupp in figure 1 above)
7. Browse the Database Volume and select where you want the NDPS Manager database to be assigned. (e.g. TECH_50_SYS.TeSupp in figure 1 above)
8. Click **Create**. The new NDPS Manager will appear in the main browser window.
 - To start the NDPS Manager in future, enter the following command at the console:
LOAD NDPSM
 - then select the NDPS Manager object.
 - To start the NDPS Manager whenever you bring up the server, add a command like the following to your server's AUTOEXEC.NCF file:
LOAD NDPSM SerMGR.TeSupp

The last item is the name of the NDPS Manager object you wish to load.
9. After creating an NDPS Manager, you can create NDPS printers by using NetWare Administrator, as explained below.

Creating an NDPS Printer Agent

To create Public Access Printers using the NDPS Manager Object in NetWare Administrator, follow this procedure:

1. Start the NDPS Manager object you will be using to control the Printer Agent.
2. At the *Identification* page, click the *Printer Agent List*.
3. Click *New* to see the *Create Printer Agent* window, as shown below.

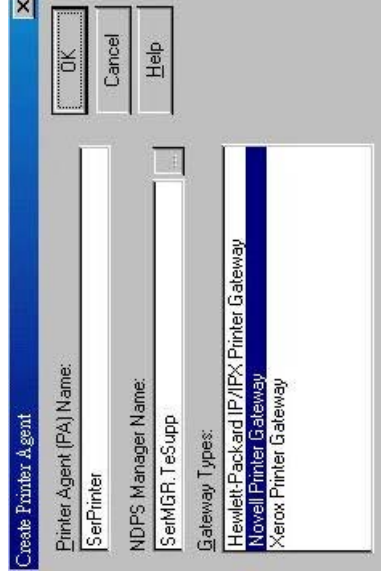


Figure 30: Create Printer Agent

4. Enter the desired name for the *Printer Agent (PA) Name*.
5. Normally, the *NDPS Manager* will be the NDPS Manager object you are using.
6. Select *Novell Printer Gateway* in the *Gateway Type*. (see figure2 above)
7. Click *OK* and then select the available printer.
8. Select *Remote (LPR on IP)* in the *Connection Type*.
9. Click *Next* to see the following *Configure Port Handler* screen.

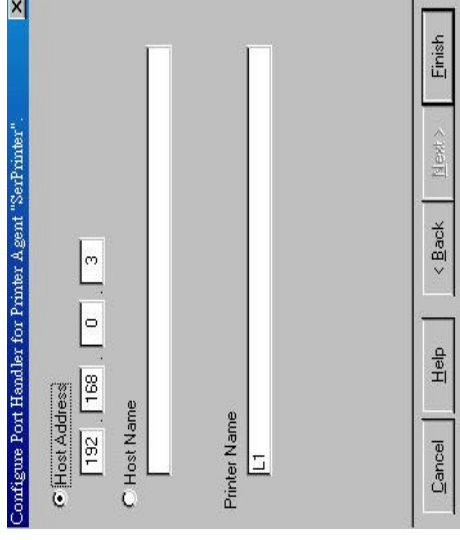


Figure 31 Configure Port Handler

10. In the *Host address IP* field, enter the IP Address previously assigned to the Print Server device.
11. In the *Printer Name* field, enter the Logical Port name on the Print Server. (e.g.: L1)
Note: For Print Servers with one parallel port, the logical ports are named L1, L2 and L3. For devices with three parallel ports, the logical ports are named L1 to L8.
12. Click *Finish*, then select appropriate drivers for the versions of Windows used on your LAN.
13. The new Printer Agent will now appear in the Printer Agent List window.

Repeat this procedure for any other ports on the Print Server, or for any other logical printers you wish to use. Client PCs can now be configured as described in *Chapter 4 - Client Configuration*.

Unix Systems

Your Print Server can be configured using FTP, and it supports the following Unix printing methods:

- LPD
- FTP
- Direct Socket Interface
- PSfilter (proprietary printing method)

For full details on using Unix systems with your Print Server, refer to the *Unix* manual in the /Manual/Unix directory on the CD-ROM.