

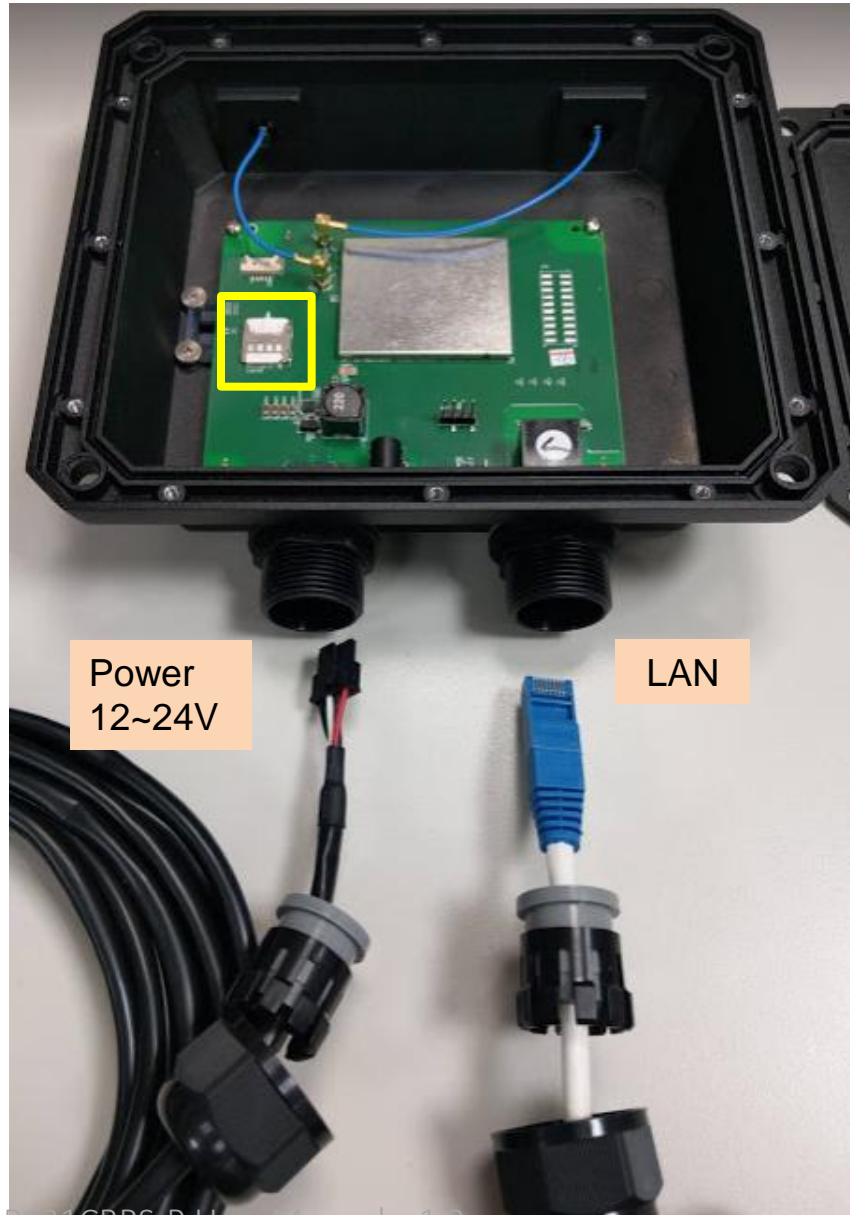


Industrial LTE CPE User Manual

V1.3.6

July 2, 2020

Before Use



Steps:

1. Remove bottom cover
2. Insert Micro SIM card into card socket(yellow frame)

3. Connect power cable and LAN cable

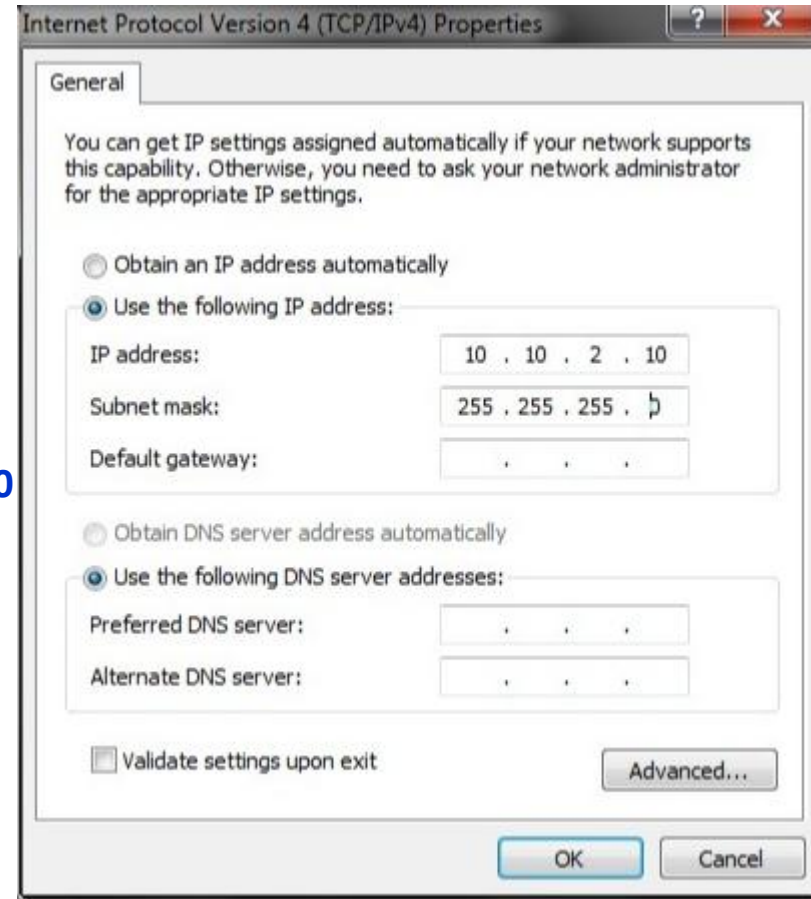
*** Please wear anti-static gloves and always remove/insert micro SIM card when the device is power off.**

Configure Laptop/PC Ethernet to Fixed IP

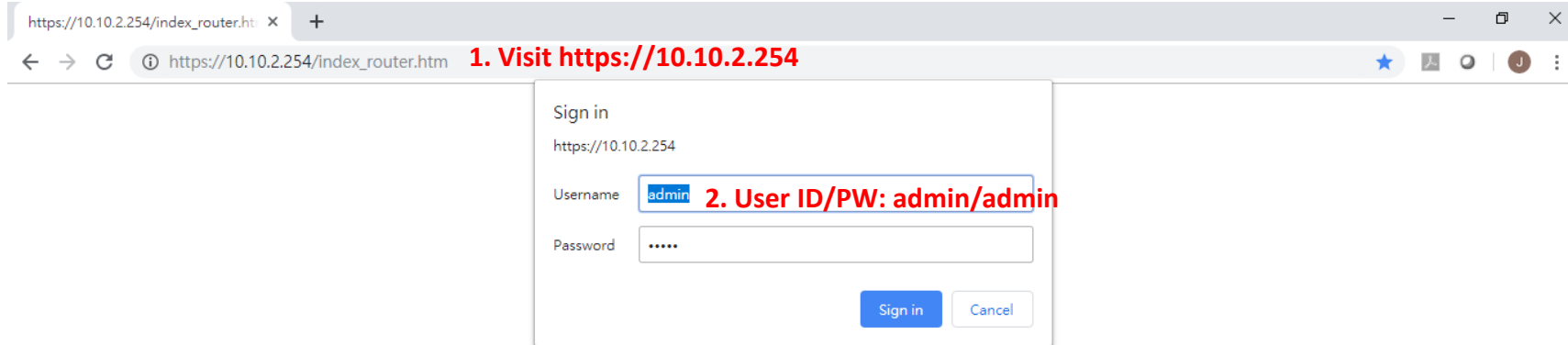
To connect to video bridge, please use fixed IP all the time no matter in configuration or assigned IP check period.

Steps:

1. Configure Laptop IP to 10.10.2.10/255.255.255.0 (Don't use DHCP to get IP from CPE)
2. Click "OK"



How to Login GUI



Steps:

1. Visit <https://10.10.2.254>
2. User ID/PW: admin/admin
3. Click "Sing In"

How to Get LTE information

CPE-Router

Not secure | https://10.10.2.254/index_router.htm 1. Visit <https://10.10.2.254>

SERCOMM Embed IP Everywhere

Login Time: 4:51 P.M.

Add your comment ... Download Log

Status 2. Click "Status" RRC/NAS Counter CellInfo Environment Throughput Key-Counter

Settings

Administration

LOG

Log Out

Restart

LTE			
Status Cause:	[Established]	Connection Status	Connected
APN(NAT)		IP Address:	192.168.1.51
APN(Bridge)		IP Address:	
APN(VLAN)		IP Address:	
IMEI:	354021070040660	IMSI:	001012345678901
EARFCN(UL):	42590	EARFCN(DL):	42590
BW:	20MHz	PLMNID:	00101
PCI:	0	RSSI:	-45
TAC:	1	RSRP:	-77
SINR:	29	CWMP Status:	IDLE
BandNeighbors:		BandBlackList:	

LTE information

LAN			
IP Address:	10.10.2.254	DHCP Server:	ON
Network Mask:	255.255.255.0	MAC Address:	00:0A:3B:12:34:61

Module			
PKG Version:	0.64.63.0R2360	ARM1 Version:	0.3.2.17

System			
Device Name	Sercomm	Firmware Version:	RD1219@190315
Current Time:	2013-06-20 14:11:52	Device ID	vzgcxz1jwoqkzov

Sercomm FW version

Refresh Screen Help

Steps:

1. Visit <https://10.10.2.254>

2. Click "Status" on the left menu

Embed IP Everywhere

How to configure APN Name-NAT

1. Visit <https://10.10.2.254>

2. Click "Setting"

3. Configure APN name

4. Click "Save"

5. Click "Restart" to reboot device

- Steps:**
1. Visit <https://10.10.2.254>
 2. Click "Setting" on the left menu
 3. Configure APN Name if required
 4. Click "Save"
 5. Click "Restart" or unplug to reboot the device

How to configure APN Name-Bridge

1. Visit <https://10.10.2.254>

2. Click "Setting"

3. Configure APN name

4. Click "Save"

5. Click "Restart" to reboot device

Steps:

1. Visit <https://10.10.2.254>
2. Click "Setting" on the left menu
3. Tick the checkbox of Bridge and configure APN Name if required
4. Click "Save"
5. Click "Restart" or unplug to reboot the device
6. Configure laptop/PC ethernet to DHCP to get IP in bridge mode.
7. Configure laptop/PC ethernet to fixed IP when need to enter GUI in bridge mode

How to Upgrade Firmware

The screenshot shows a web browser window with the address bar displaying https://10.10.2.254/index_router.htm. The page header features the SERCOM logo and the tagline "Embed IP Everywhere". A navigation menu on the left includes "Status", "Settings", "Administration" (highlighted with a red box), "LOG", "Log Out", and "Restart". The main content area has three buttons: "Upgrade", "TR069", and "Config File". Below these buttons, the text "Locate and Select the Upgrade File from your Hard Disk:" is followed by a file selection interface with a "Choose File" button and the text "No file chosen". Below the file selection, there are "Upload", "Cancel", and "Help" buttons. Red annotations on the screenshot indicate the steps: "1. Visit https://10.10.2.254", "2. Click Administration", "3. Click to choose firmware file", and "4. Click 'Upload'".

Steps:

1. Visit <https://10.10.2.254>
2. Click "Administration" on the left menu
3. Click "Choose File" to choose firmware file
4. Click "Upload"

How to Reset to Default

The screenshot shows a web browser window with the address bar displaying https://10.10.2.254/index_router.htm. The page header features the SERCOM logo and the tagline "Embed IP Everywhere". Below the header, there is a login time indicator (6:26 P.M.), a comment field, and a "Download Log" button. The main content area is divided into a left sidebar menu and a central configuration panel. The sidebar menu includes "Status", "Settings", "Administration", "LOG", "Log Out", and "Restart". The "Administration" menu item is highlighted with a red box and labeled "2. Click". The central panel has three tabs: "Upgrade", "TR069", and "Config File". The "Config File" tab is highlighted with a red box and labeled "3. Click 'Config File'". Under the "Config File" tab, there are two main sections: "Backup Config" (Save a Copy of Current Settings) with a "Backup" button, and "Default Config" (Revert to Factory Default Settings) with a "Factory Defaults" button. The "Factory Defaults" button is highlighted with a red box and labeled "4. Click 'Factory Defaults'". At the bottom of the central panel, there is a "Help" button. A red text annotation "5. Click 'Restart' to reboot device" is positioned below the sidebar menu.

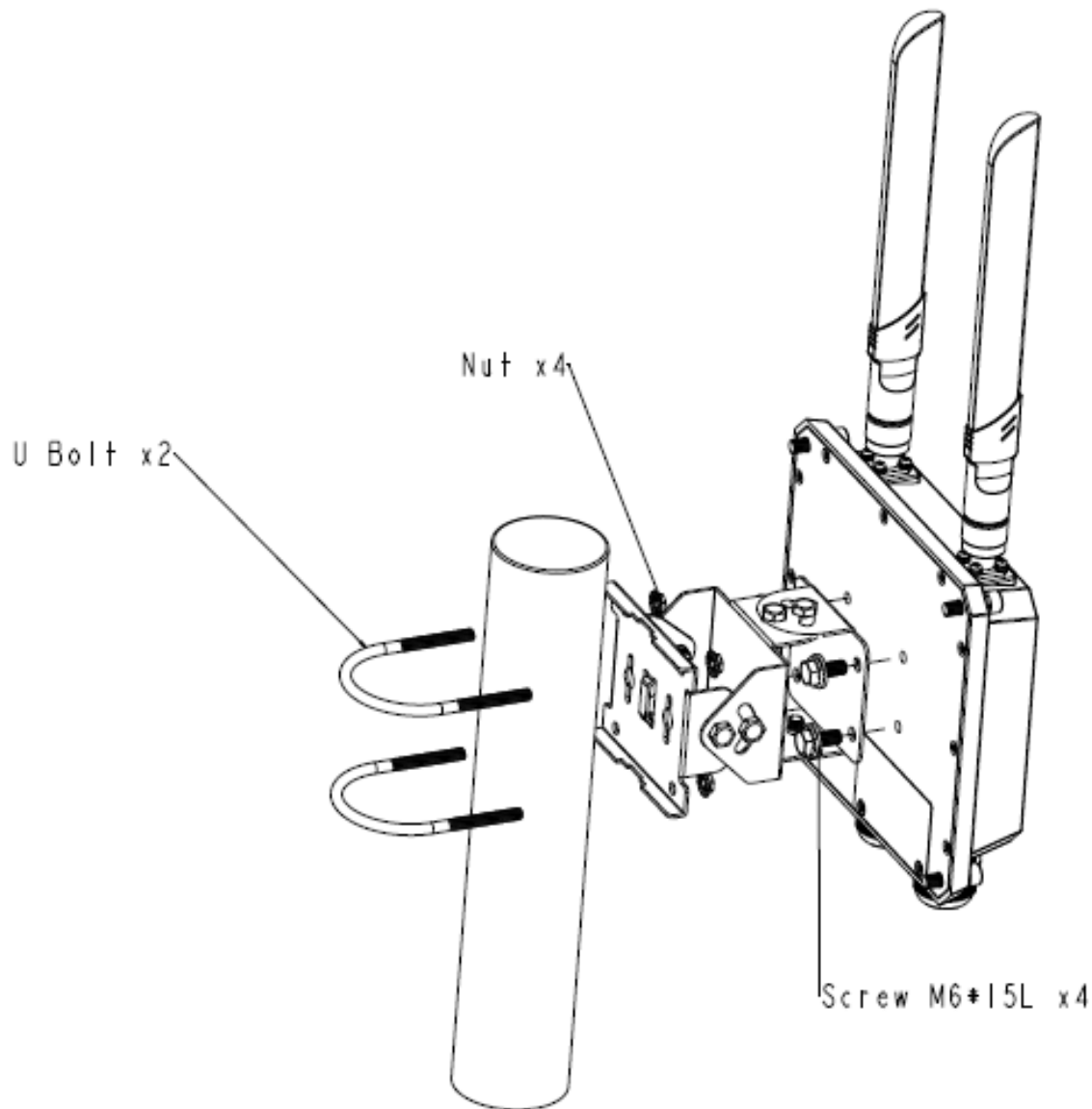
Steps:

1. Visit <https://10.10.2.254>
2. Click "Administration" on the left menu
3. Click "Config File"
4. Click "Factory Defaults" to reset to default settings
5. Click "Restart" or unplug to reboot the device

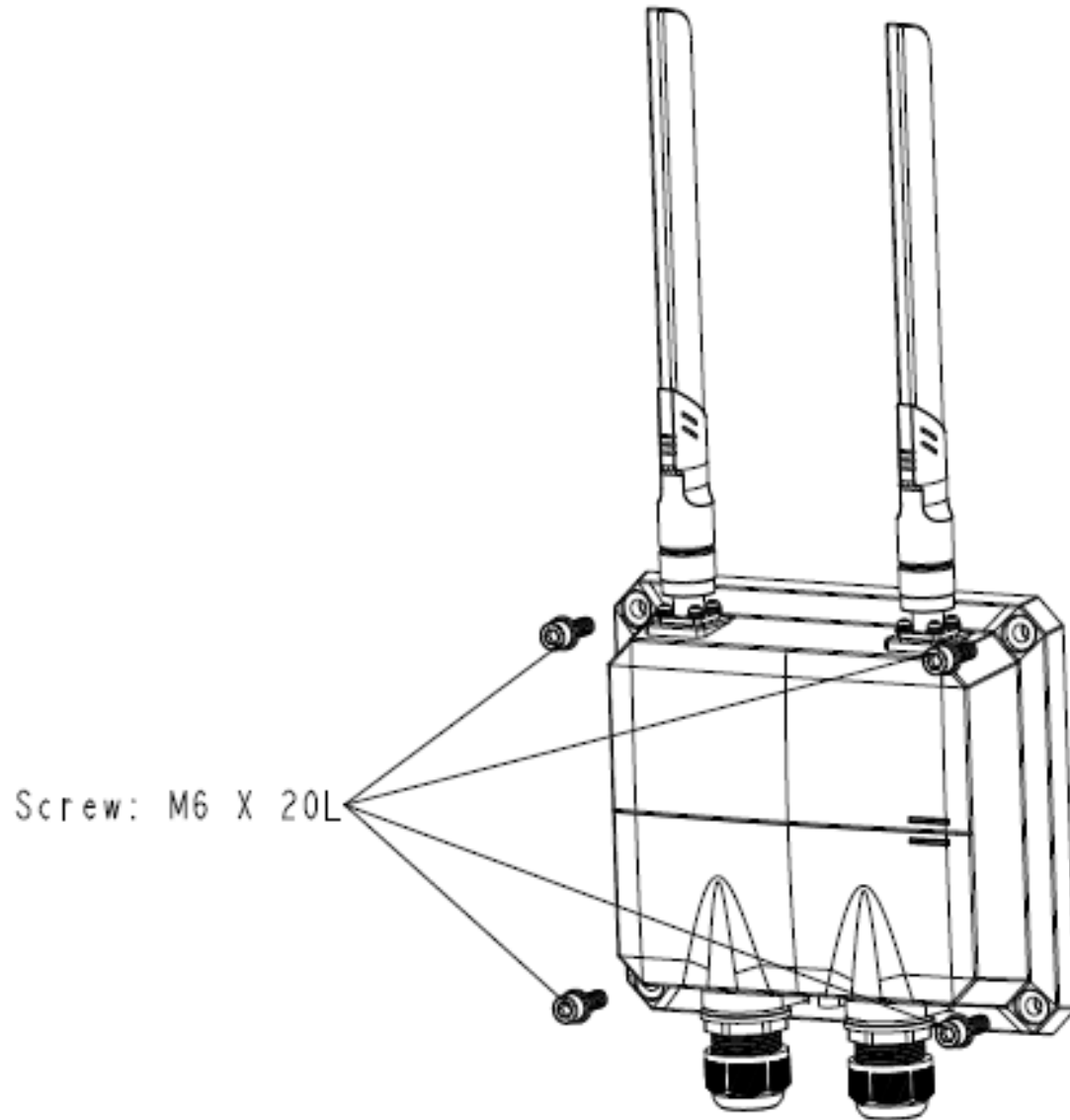
How to Read LEDs

STATUS	STATUS LED		LTE SIGNAL LED		
	Green	Red	Blue	Green	Orange
Power On	On	Off	Off	Off	Off
Power Off	Off	Off	Off	Off	Off
No SIM card	Off	On	Off	Off	Off
FW Upgrading	Blink	Off	Off	Off	Off
FW Upgrading Fail	On	Blink	Off	Off	Off
PLMN Search / Network Attaching	On	Off	Off	Blink	Off
RSRP (> -87) dBm	On	Off	On	Off	Off
RSRP (-106 ~ -87) dBm	On	Off	Off	On	Off
RSRP (< -106) dBm	On	Off	Off	Off	On

How to Mount the Device_Pole Mount



How to Mount the Device_Wall Mount



Federal Communication Commission Interference Statement

This device complies with Part 15 of the FCC Rules. Operation is subject to the following two conditions: (1) This device may not cause harmful interference, and (2) this device must accept any interference received, including interference that may cause undesired operation.

This equipment has been tested and found to comply with the limits for a Class B digital device, pursuant to Part 15 of the FCC Rules. These limits are designed to provide reasonable protection against harmful interference in a residential installation. This equipment generates, uses and can radiate radio frequency energy and, if not installed and used in accordance with the instructions, may cause harmful interference to radio communications. However, there is no guarantee that interference will not occur in a particular installation. If this equipment does cause harmful interference to radio or television reception, which can be determined by turning the equipment off and on, the user is encouraged to try to correct the interference by one of the following measures:

- Reorient or relocate the receiving antenna.
- Increase the separation between the equipment and receiver.
- Connect the equipment into an outlet on a circuit different from that to which the receiver is connected.
- Consult the dealer or an experienced radio/TV technician for help.

FCC Caution: Any changes or modifications not expressly approved by the party responsible for compliance could void the user's authority to operate this equipment.

This transmitter must not be co-located or operating in conjunction with any other antenna or transmitter.

Radiation Exposure Statement:

This equipment complies with FCC radiation exposure limits set forth for an uncontrolled environment.

This equipment should be installed and operated with minimum distance 20cm between the radiator & your body.