

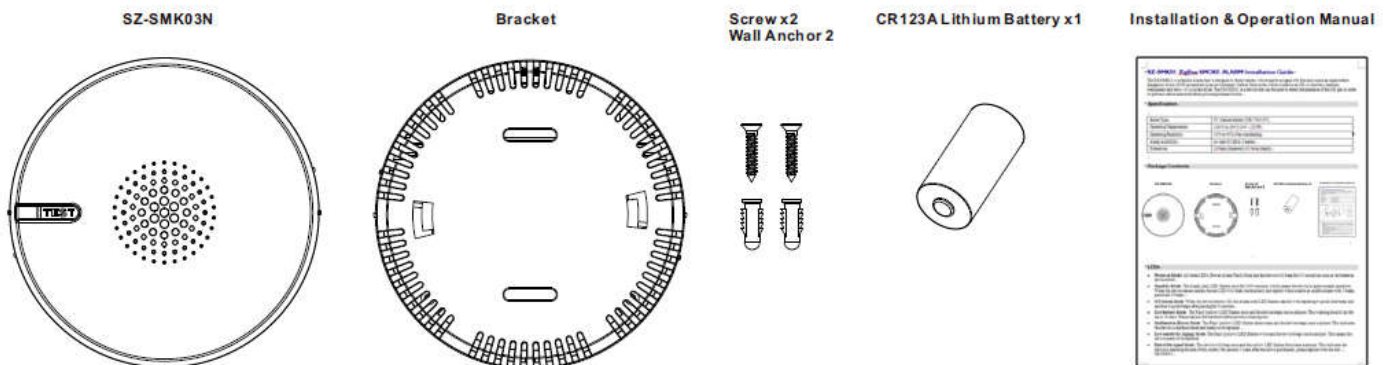
# SD-SMK03N DECT ULE SMOKE ALARM Installation Guide

The SSS1R0-29 is a Smoke Alarm that is designed to detect smoke, which maybe a signal of a fire. This device can provide more time by making alarms for you and your family to escape before a fire spreads. A DECT ULE module is installed and can transmit events to cloud service via a DECT ULE gateway.

## Specification

Batter Type	GP CR123A x1
Operating Temperature	4.4° C to 37.8° C (40° - 100°F)
Operating Humidity	10% to 95% Non-condensing
Alarm Audibility	At least 85 dB at 10 feet
Dimension	97mm (diameter) x 42mm (depth)

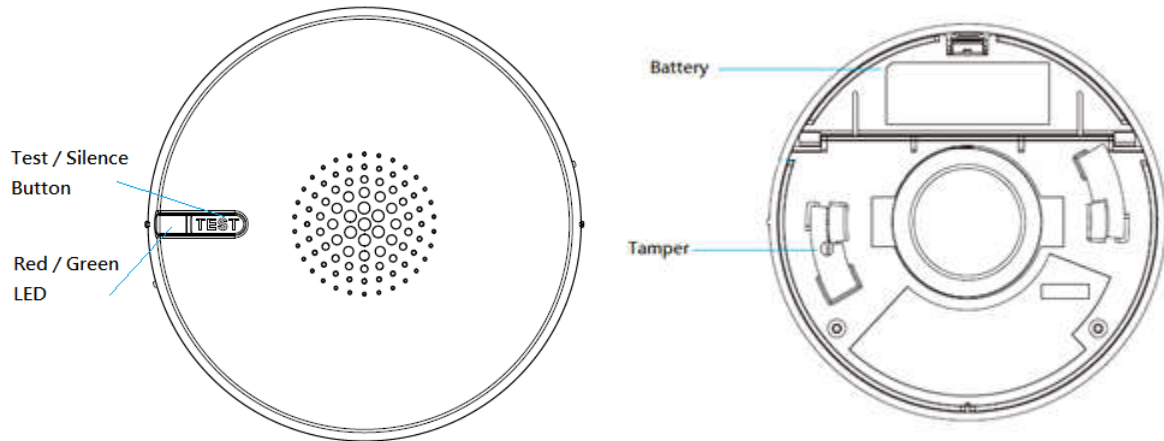
## Package Contents



## LED and Buzzer Indications

- **Stand-By:** The device is under normal operation if the red LED flashes once every 344 seconds.
- **Low Battery:** Buzzer beeps every 43 seconds.
- **EOL of IR LED:** Buzzer beeps 3 times every 43 seconds.
- **Alarm:** Red LED flashes continuously and buzzer sounds 3 beeps, pause, 3 beeps, repetitively.
- **Pairing:** When device is joining to a DECT ULE network, it flashes at 1 Hz for 90 seconds.

## Introduction



### Installation/Replacement Battery

- Open the battery cover of the device.
- Install the supplied battery correctly.
- Close the battery cover.
- Green LED starts blinking when it is ready to join DECT ULE network.
- Please use a CR123A 3V battery. Use of a different battery may cause a detrimental effect on alarm operation.

### Caution:

To ensure the product life and quality is as expected, please replace the whole device after it is triggered by a fire event. Risk of Explosion if battery is replaced by an incorrect type. Dispose of used batteries according to this instruction.

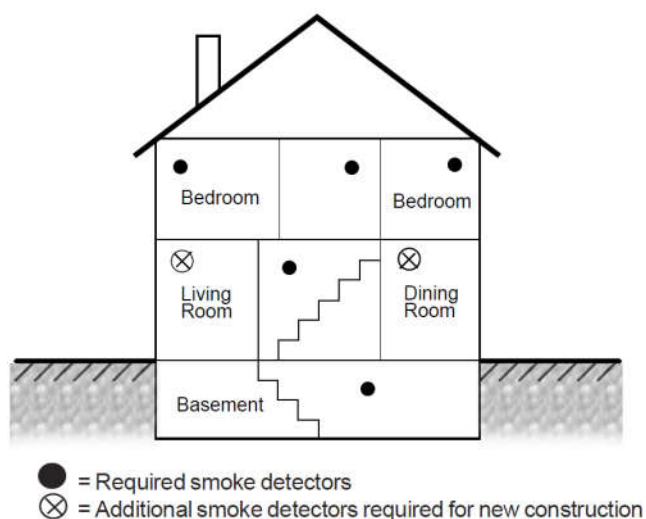
### Silence

1. If the device is alarming, press the “Test /Silence” button will have it silenced. If the smoke still remains after 10 minutes, the device will alarm again.

### Locations to install your SD-SMK03N

Smoke alarms should be installed in accordance with the NFPA Standard 72 (National Fire Protection Association, Battery march Park, Quincy, MA 02169). For complete coverage, smoke alarms should be installed in all rooms, halls, storage areas, basements, and attics in each family. For your information, the National Fire Alarm Code, NFPA 72, reads as follows:

- Install in all guest rooms
- Install outside of each separate dwelling unit sleeping area, within 6.4m (21ft) of any door to a sleeping room, the distance measured along a path of travel.
- Install on every level of a dwelling unit, including basements.
- Install on every level of a residential board and care occupancy (small facility), including basements and excluding crawl spaces and unfinished attics.
- Install in the living area of a guest suite.
- Install in the living area of residential board and care occupancy.
- Install in ambient temperature between 4.4° C to 37.8° C (40° - 100°F).



Do not place the device in the following areas:

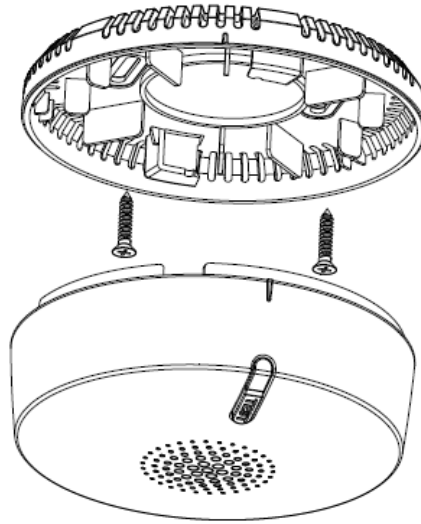
- Combustion particles are the by-products of something that is burning. Thus, in or near areas where combustion particles are present you do not install the smoke alarms to avoid nuisance alarms, such as kitchens with few windows or poor ventilation, garages where there may be vehicle exhaust, near furnaces, hot water heaters, and space heaters.
- Do not install smoke alarms less than 20 feet (6 meters) away from places where combustion particles are normally present, like kitchens. If a 20-foot distance is not possible, e.g. in a mobile home, try to install the alarm as far away from the combustion particles as possible, preferably on the ceiling. To prevent nuisance alarm alarms, provide good ventilation in such places. Within 5 feet (1.5 meter) of open flame appliances such as furnaces, stoves and fireplaces.

### If The Smoke Alarm Sounds

- Do not panic, stay calm. Follow your family escape plan.
- Get out of the house as quickly as possible. Do not stop to get dressed or collect anything.
- Feel doors with the back of your hand before opening them. If a door is cool, open it slowly. Do not open a hot door. Keep doors and windows closed, unless you must escape through them.
- Cover your mouth and nose with a cloth (preferably damp). Take short, shallow breath.
- Meet at your planned meeting place after leaving the house.
- Call the Fire Department as soon as possible from outside your house. Give the address and your name.
- Never go back inside a burning building. Contact your local Fire Department. They will give you more ideas about how to make your home safer from fires and how to plan your family's escape.

### Ceiling Mounting

- Choose a flat and solid ceiling to install the device.
- Draw a four inches horizontal line at the place where you are going to install the device.
- Draw 2 marks to locate the screws.
- Drill two holes at the marks and insert screws and wall plugs.
- Attach the bracket to the ceiling by using the supplied two screws and wall plugs.
- Attach the device onto the mounting bracket and turn it clockwise to fix it into place. Make sure it is securely attached to the mounting bracket.



## Weekly Testing

- **Never** use an open flame of any kind to test this unit. You might accidentally damage or set fire to the unit or to your home.
- If the alarm ever fails to test properly, replace it immediately. Products under warranty returned to the manufacturer for replacement. **Sercomm Corporation, 8F, 3-1, YuanQu St., NanKang, Taipei 115, Taiwan.**
- **It is important to test this unit every week to make sure it is working properly.** Using the Test/Silence button is the recommended way to test this Smoke Alarm. Press and hold the Test/Silence button until the alarm sounds (the unit may continue to alarm for a few seconds after you release the button). If it does not alarm, make sure the smoke alarm battery is installed and test it again. If it still does not alarm, replace it immediately. During testing you will hear a loud, repeating horn pattern: 3 beeps, pause, 3 beeps, pause. Red LED flashes rapidly.

## Regular Maintenance

- Clean the smoke alarm at least once a month. Gently vacuum the outside of the smoke sensing chamber using household vacuum's soft brush attachment. A can of compressed air may also be used to blow out dirt inside sensing chamber.
- Test the smoke alarm after cleaning.
- Never use water, cleaners or solvents since they may damage the unit.

## Limitation of Smoke Alarm

- **Smoke alarm may not be heard if residents are hearing impaired.**  
Special designed units such as those with visual and audible alarms should be installed for hearing impaired residents.
- **Smoke alarm may not waken all individuals if they are sound sleepers.**  
If children or other family members do not waken readily to the sound of the smoke alarm, or if there are infants or members with mobility limitations, make sure someone is assigned to assist them in fire drill and in the event of emergency. It is the responsibility of individuals in the household that are capable of assisting others to provide assistance to those who may not be awakened by the alarm sound, or to those who may be incapable of safely evacuating the area unassisted.
- **Smoke alarm has a limited life**  
Although this smoke alarm has passed many tests and is designed to be as reliable as possible, any of the parts could fail at any time. Therefore, you must test this device weekly. It should be replaced immediately if it is not operating properly.

## Connect to a DECT ULE Network

SSS1R0-29 build-in a saperate DECT ULE module which is compatible to DECT ULE HAN-FUN protocol. It connects to a DECT ULE compatible gateway and sends follow events. These messages will be shown on cloud service.

- Smoke Alarm On /Off
- Tamper On /Off

- Test Mode On/Off
- Low Battery

## 1. Pairing

- Install the RF battery and the Join/Leave Green LED will start blinking at 1 Hz for 90 seconds which indicates SD-SMK03N is ready to join a DECT ULE network.
- The device will attempt to joining a DECT ULE network for 90 seconds. If all attempts fail, SSS1R0-29 will stop joining process, and need to press and hold tamper for 5 seconds, and then release it to start joining process.

## 2. Reset Device

- Press and hold the tamper while install the battery.
- Release the tamper after 10 seconds and DECT ULE module will be reset to factory default.

**Note: SSS1R0-29 is used as a single station alarm. The RF is a supplement function to send events message to cloud service via a DECT ULE gateway. If the network is down or RF signal interrupted, Smoke Alarm, Test Mode and Low Battery functions are still operated locally via audible alert.**

# Regulatory Approvals

## **FCC Statement (US)**

This device complies with part 15 of the FCC rules. Operation is subject to the following two conditions:

1. This device may not cause harmful interference, and
2. This device must accept any interference received, including interference that may cause undesired operation.

**NOTE:** This equipment has been tested and found to comply with the limits for Class B digital device, pursuant to Part 15 of the FCC Rules. These limits are designated to provide reasonable protections against harmful interference in a residential installation. This equipment generates, uses, and can radiate radiofrequency energy and, if not installed and used in accordance with the instructions, may cause harmful interference to radio communications. However, there is no guarantee that interference will not occur in a particular installation. If this equipment does cause harmful interference to radio or television reception, which can be determined by turning the equipment off and on, the user is encouraged to try to correct the interference by one of more of the following measures:

- Reorient or relocate the receiving antenna.
- Increase the separation between the equipment and receiver.
- Connect the equipment into an outlet on a circuit different from that to which the receiver is connected.
- Consult the dealer or an experienced radio/TV technician for help.

**CAUTION:** Any changes or modifications not expressly approved by the party responsible for compliance could void the user's authority to operate this equipment.

**FCC WARNING:** This equipment may generate or use radiofrequency energy. Changes or modifications to the equipment may cause harmful interference unless the modifications are expressly approved in the instruction manual. The user could lose the authority to operate this equipment if an unauthorized change or modification is made.

## **FCC RF Radiation Exposure Statement**

This equipment complies with FCC radiation exposure limits set forth for an uncontrolled environment. This equipment should be installed and operated with a minimum distance of 20 cm between the radiator and your body. End-users must follow the specific operating instructions for satisfying RF exposure compliance. This transmitter must not be co-located or operating in conjunction with any other antenna or transmitter.