

# User Manual For Bluetooth Board

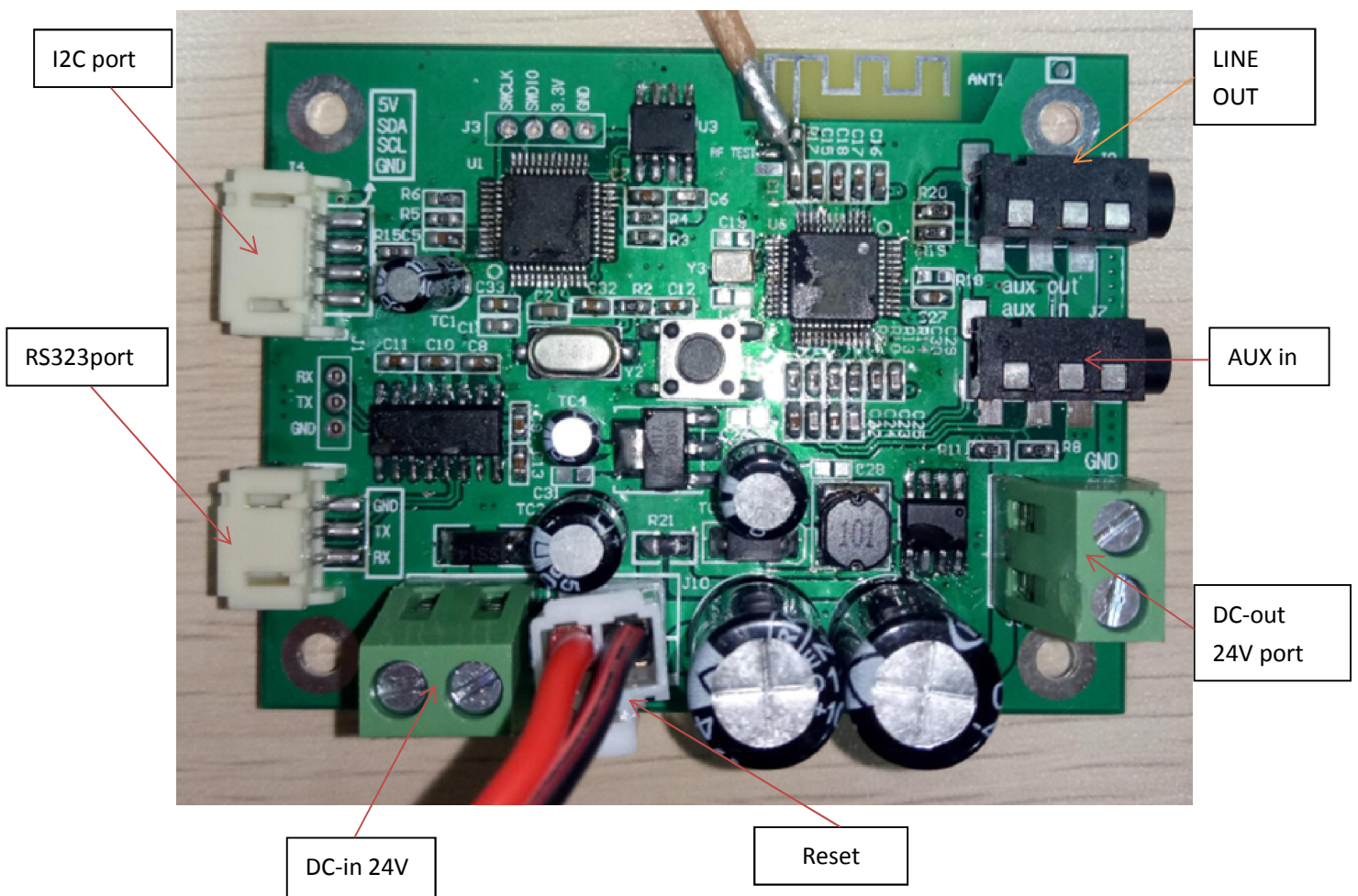
## 1. Function

Be used for communicating with other Bluetooth device (by Bluetooth mode) or other sound source device (by AUX Mode), transmitting audio signal to amplify board

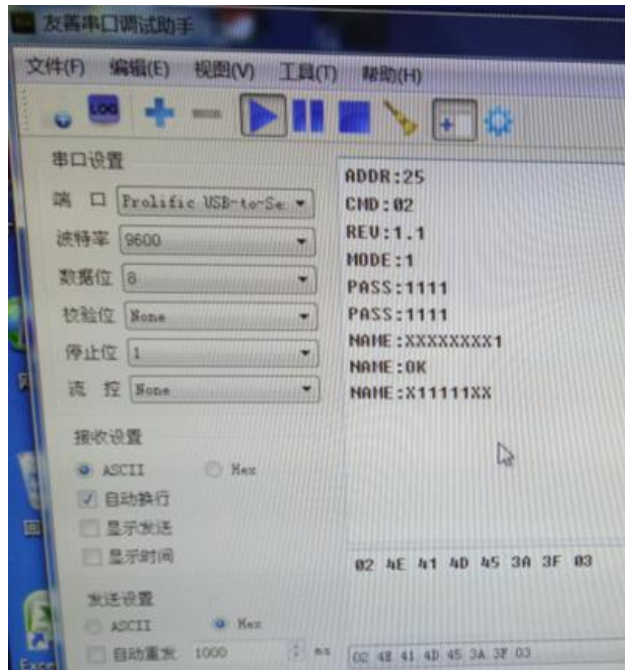
## 2. Operation

Track playback controller connects to the external keypad through an I2C interface, enabling play/pause, last song, next song, volume +, volume -, Bluetooth /AUX to be switched.

Through a 3-pin serial port, you can set the Bluetooth board broadcast name, password, address, etc.



Control command, refer to "RS232 Commands and Responses for BlueTooth Receiver(20180428).xlsx". and "CMD(20180503).TXT".



### 3. Statement

#### Federal Communications Commission (FCC) Interference Statement

This equipment has been tested and found to comply with the limits for a Class B digital device, pursuant to Part15 of the FCC Rules.

These limits are designed to provide reasonable protection against harmful interference in a residential installation. This equipment generate, uses and can radiate radio frequency energy and, if not installed and used in accordance with the instructions, may cause harmful interference to radio communications.

However, there is no guarantee that interference will not occur in a particular installation. If this equipment does cause harmful interference to radio or television reception, which can be determined by turning the equipment off and on, the user is encouraged to try to correct the interference by one of the following measures:

- Reorient or relocate the receiving antenna.
- Increase the separation between the equipment and receiver.

- Connect the equipment into an outlet on a circuit different from that to which the receiver is connected.
- Consult the dealer or an experienced radio/TV technician for help.

This device complies with Part 15 of the FCC Rules. Operation is subject to the following two conditions:

(1) This device may not cause harmful interference, and (2) this device must accept any interference received, including interference that may cause undesired operation.

FCC Caution: Any changes or modifications not expressly approved by the party responsible for compliance could void the user's authority to operate this equipment.

### **RF exposure warning**

This equipment complies with FCC radiation exposure limits set forth for an uncontrolled environment.

This equipment must not be collocated or operating in conjunction with any other antenna or transmitter.

### **OEM Integration Instructions :**

This device is intended only for OEM integrators under the following conditions :

The module can be used to installation in specific host (Host information as follows). The module shall be only used with the integral antenna(s) that has been originally tested and certified with this module. As long as 2 conditions above are met, further transmitter test will not be required. However, the OEM integrator is still responsible for testing their end-product for any additional compliance requirement with this module installed.

**Host**

**Product Name:** Lighted Bluetooth Mirror

**Manufacturer:** SEURA

**Model Name:** S-S-2424-SA-VE.6-BLED-BT

**IMPORTANT NOTE :**

In the event that these conditions cannot be met (for example certain laptop configuration or co-location with another transmitter), then the FCC authorization for this module in combination with the host equipment is no longer considered valid and the FCC ID of the module cannot be used on the final product. In these and circumstance, the OEM integrator will be responsible for re-evaluating. The end product (including the transmitter) and obtaining a separate FCC authorization. The final end product must be labeled in a visible area with the following: **“Contains Transmitter Module FCC ID: 2APLNBTM1 or Contains FCC ID: 2APLNBTM1”**.