

FCC statement

This device complies with Part 15 of the FCC Rules: Operation is subject to the following two conditions:

1. This device may not cause harmful interference and
2. This device must accept any interference that is received, including any interference that may cause undesired operation.

*RF warning for Portable device: The device has been evaluated to meet general RF exposure requirement. The device can be used in portable exposure condition without restriction.

This device is acting as slave and operating in the 2.4 GHz (2412 ~2462 MHz) band.

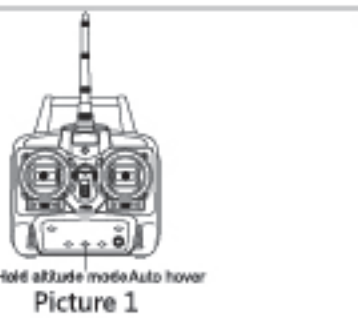
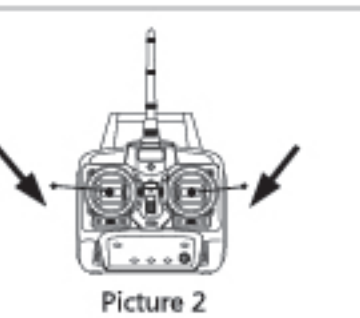
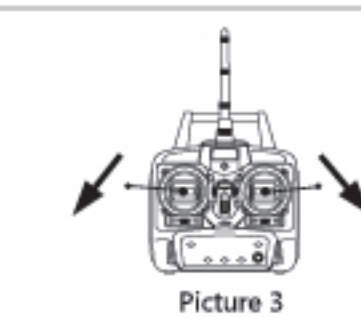


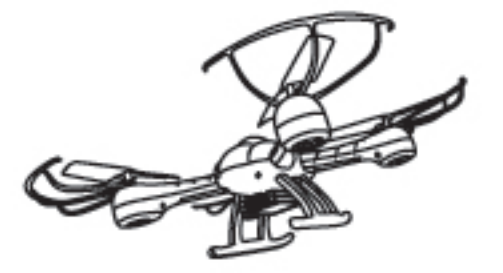

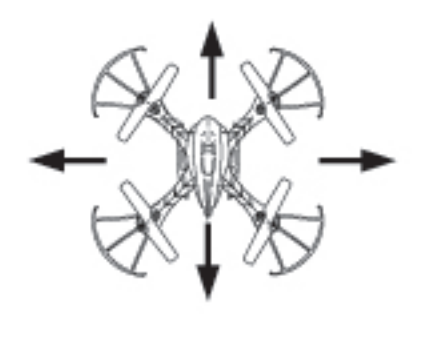
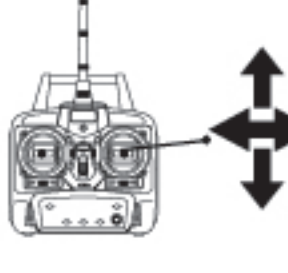
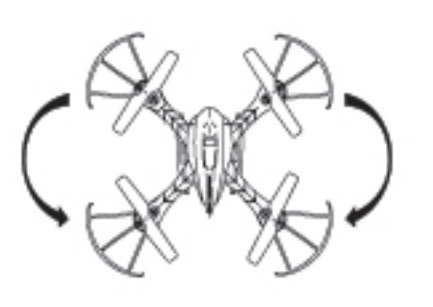
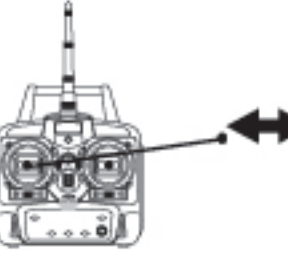
Ad Hoc function is supported but not able to operate on non-US frequencies. Do not use the device with the environment which below minimum -10 °C or maximum over 50 °C .

NOTE: This equipment has been tested and found to comply with the limits for a Class B digital device, pursuant to part 15 of the FCC Rules. These limits are designed to provide reasonable protection against harmful interference in a residential installation. This equipment generates uses and can radiate radio frequency energy and, if not installed and used in accordance with the instructions, may cause harmful interference to radio communications. However, there is no guarantee that interference will not occur in a particular installation. If this equipment does cause harmful interference to radio or television reception, which can be determined by turning the equipment off and on, the user is encouraged to try to correct the interference by one or more of the following measures:

- Reorient or relocate the receiving antenna.
- Increase the separation between the equipment and receiver.
- Connect the equipment into an outlet on a circuit different from that to which the receiver is connected.
- Consult the dealer or an experienced radio/TV technician for help

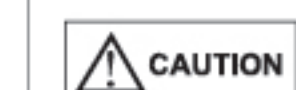
Changes or modifications to this unit not expressly approved by the party responsible for compliance could void the user's authority to operate the equipment.

-6-

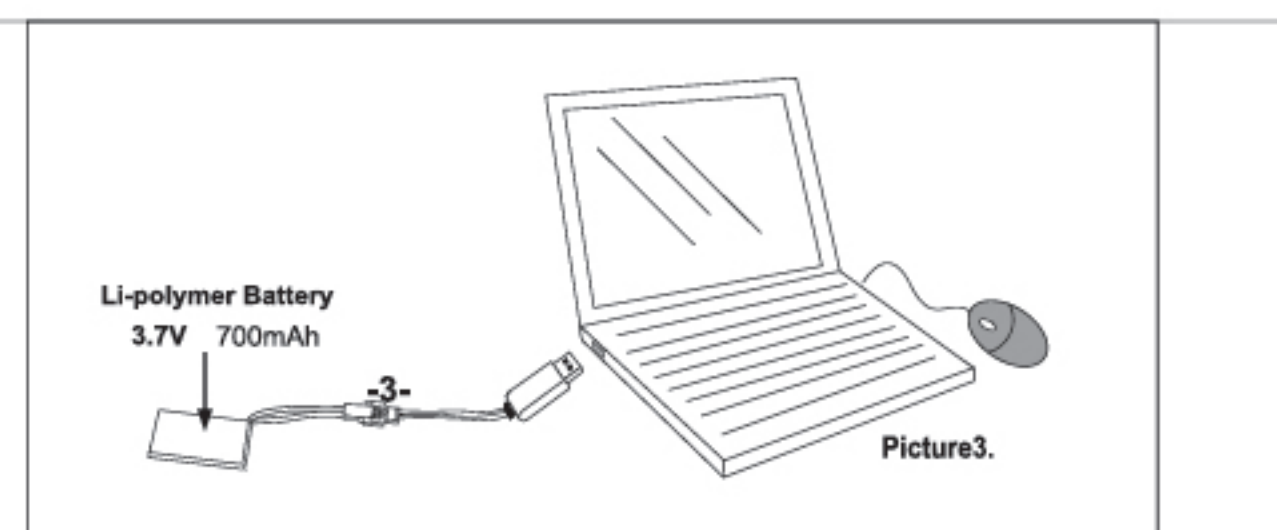
			
START/FLY	Picture 1. Press the HOVER button to start / stop flying after establishing connection. Picture 2. & 3. Push the stick as pictures, it can also start / stop flying.		
ASCEND	After establishing connection, press the HOVER button, the motors start to work. When pushing the left stick upward, the quadcopter ascends. When the quadcopter ascends upto the target altitude, release the left stick, it will hold the altitude and achieve hover flying. Then you can control the direction with the right stick.		
DESCEND	When pushing the left stick downward, the quadcopter descends. When the quadcopter descends down to the target altitude, release the left stick, it will hold the altitude and achieve hover flying. Then you can control the direction with the right stick.		
STOP FLYING	When the quadcopter landing on the ground, pushing the left stick downward for 3 seconds, the motors stop working. Pressing the HOVER button again can also stop flying.		
FLYING, DIRECTIONS, & TURNING	Use the right stick, (directional Stick) to fly left, right, move forward or backward. Normally, the Quadcopter's "front" is the cockpit.		
	Turn left : Push the left throttle stick towards left Turn right : Push the left throttle stick towards right		

-5-

Step3
Can also link the juniors line with computer again to refresh after the pond and the USB data line. (As Picture3).

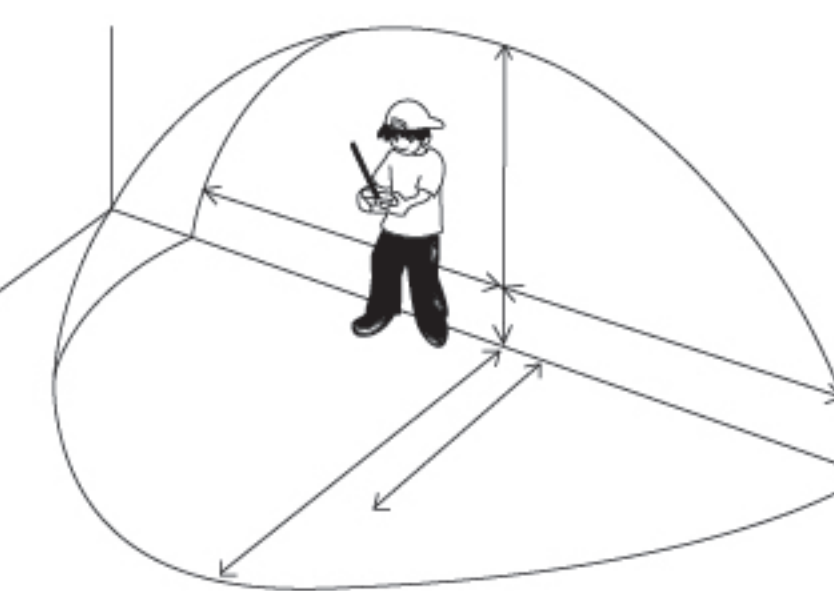


When charging thru the included USB cable: LED light is red indicating it is charging LED light is out indicating charging is done



ENVIRONMENT FOR FLIGHT

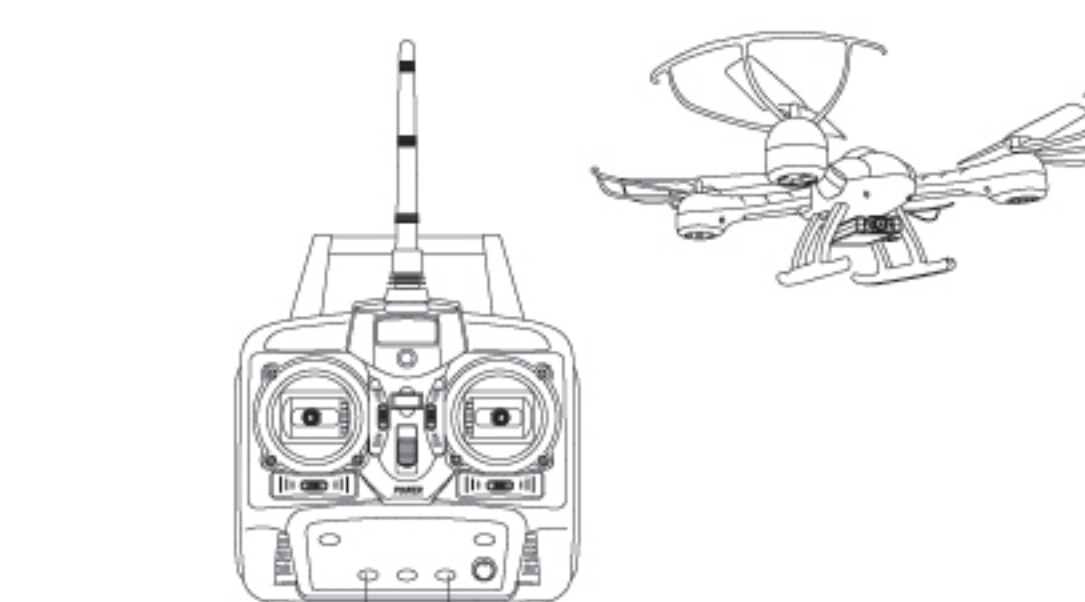
1. Always fly on a sunny, bright day with as little wind as possible. Flying in extreme heat or cold can adversely affect your flying control and response of the drone.
2. After connecting the battery, lay the SKY HAWKEYE on the ground. Please wait for approximately 5-7 seconds to allow the digital gyro to electronically stabilize. Push the throttle up and then back down to pair the radio control transmitter to the SKY HAWKEYE. The lights will stop blinking and now you are all set to fly.



CONTROL METHOD

HOME BEACON

At anytime, press and hold the beacon button for three seconds until you hear three "Ticks". If the unit was headed away from you, when you hear the ticks, the unit will head back in the opposite direction of which it was headed and return to the general vicinity of the radio transmitter.



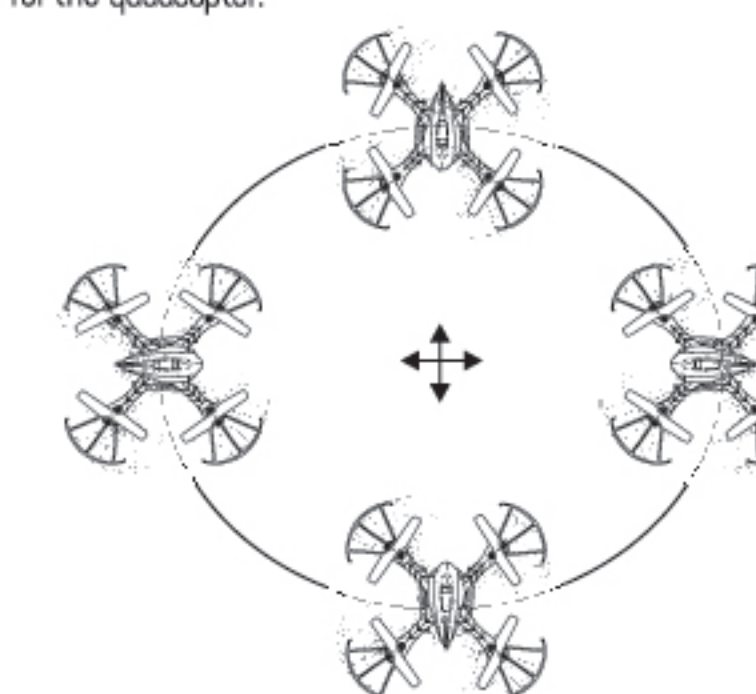
Smart fly Tech headless flight Auto-back beacon

MADE IN CHINA



By default, the clearly marked cockpit on the unit is considered the front. When flying the unit, your movements with the remote control will work according to the direction of the cockpit. However, this makes the unit very hard to fly at long range as it becomes difficult to tell which direction the cockpit is pointing.

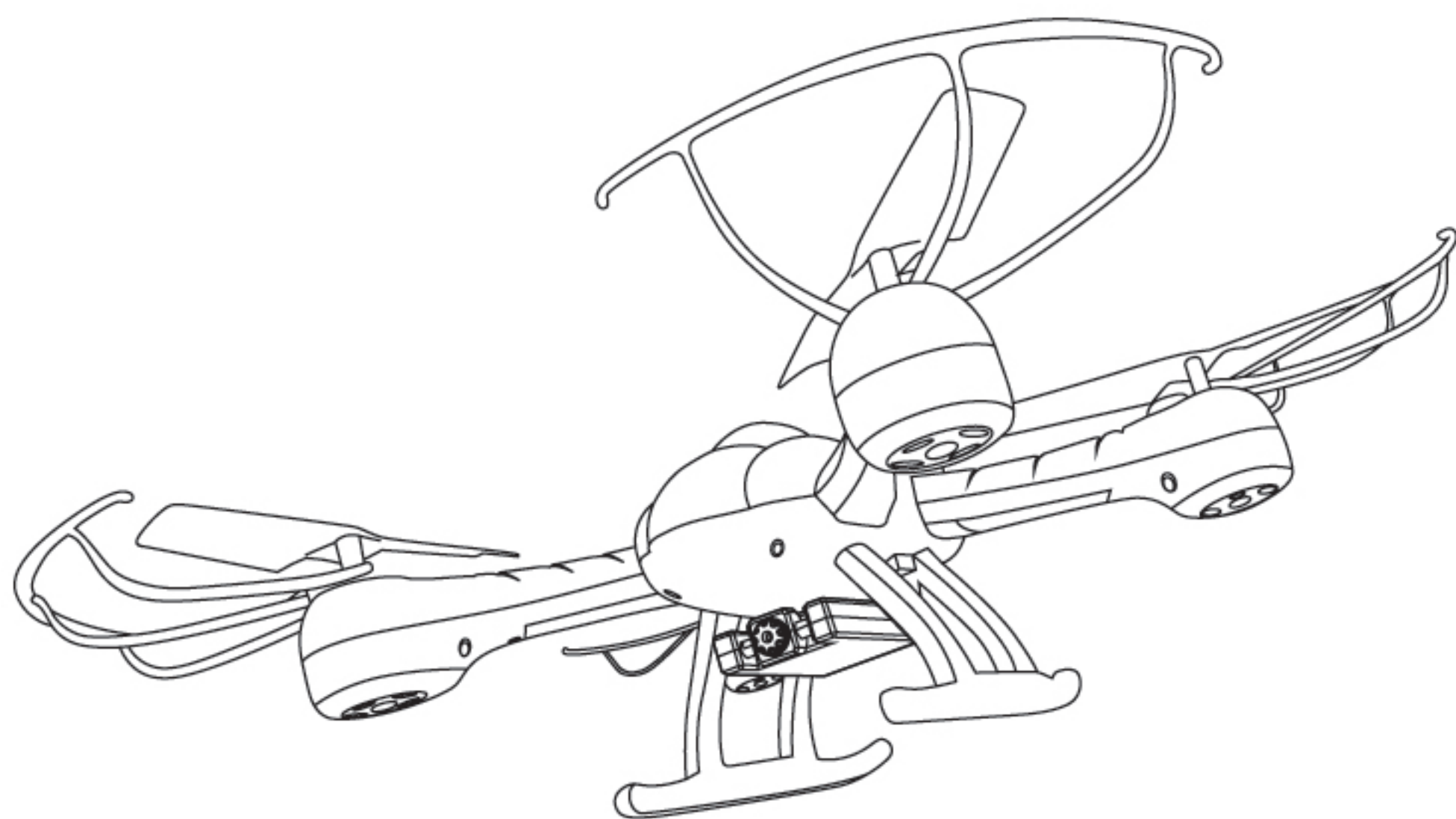
SmartFly is a mode which makes YOU the center of the unit, so the vehicle will respond to directions as if it's facing the way you are facing. Your left, right, up, and down also become that for the quadcopter.



-4-

SKY HAWKEYE III

YOUR VIEW IN THE SKY



WARNING

- Suitable for Children 14+. Adult supervision is always recommended.
- *This product contains small parts which are a choking hazard. Keep away from small children.
 - *Keep Quadcopter at least 10 feet away during use.
 - *Correctly install the Quadcopter and fly it under the guidelines of the instruction manual, small parts should be assembled by an adult.
 - *Manufacturers and dealers disclaim all responsibility for damage caused by misuse.
 - *Keep hands, hair, and loose clothing away from rotors when powered on to prevent damage to the helicopter or serious injury to self.
 - *This QUAD should not be flown IN HIGH WINDS(5+Mph) or near a pool.
 - *Never leave a charging battery unattended.
 - *When cleaning it, ensure that the helicopter is disconnected from the charger.
 - *To prevent injury, do not point the antenna directly to faces, eyes, or other people.

NOTE ON THE BATTERY

- This product is furnished with a battery pack, please pay attention to the following safety instructions:
- ① Only use the charger provided by the factory for charging.
 - ② When charging the battery: If the battery is too hot, it means the battery is overcharged. In such case, users should stop charging the battery immediately. Overcharging could damage the battery eternally.
 - ③ After flying the helicopter, the battery temperature may be relatively high. Users are advised to wait about 10 minutes until the battery has cooled before recharging.
 - ④ Turn off the helicopter whenever it is not in use. If you don't plan on flying the helicopter for a long time, charge the battery for about 1 hour before storing it.
- Caution:** Risk of explosion if battery is replaced by an incorrect type.
Dispose of used batteries according to the local laws in your state

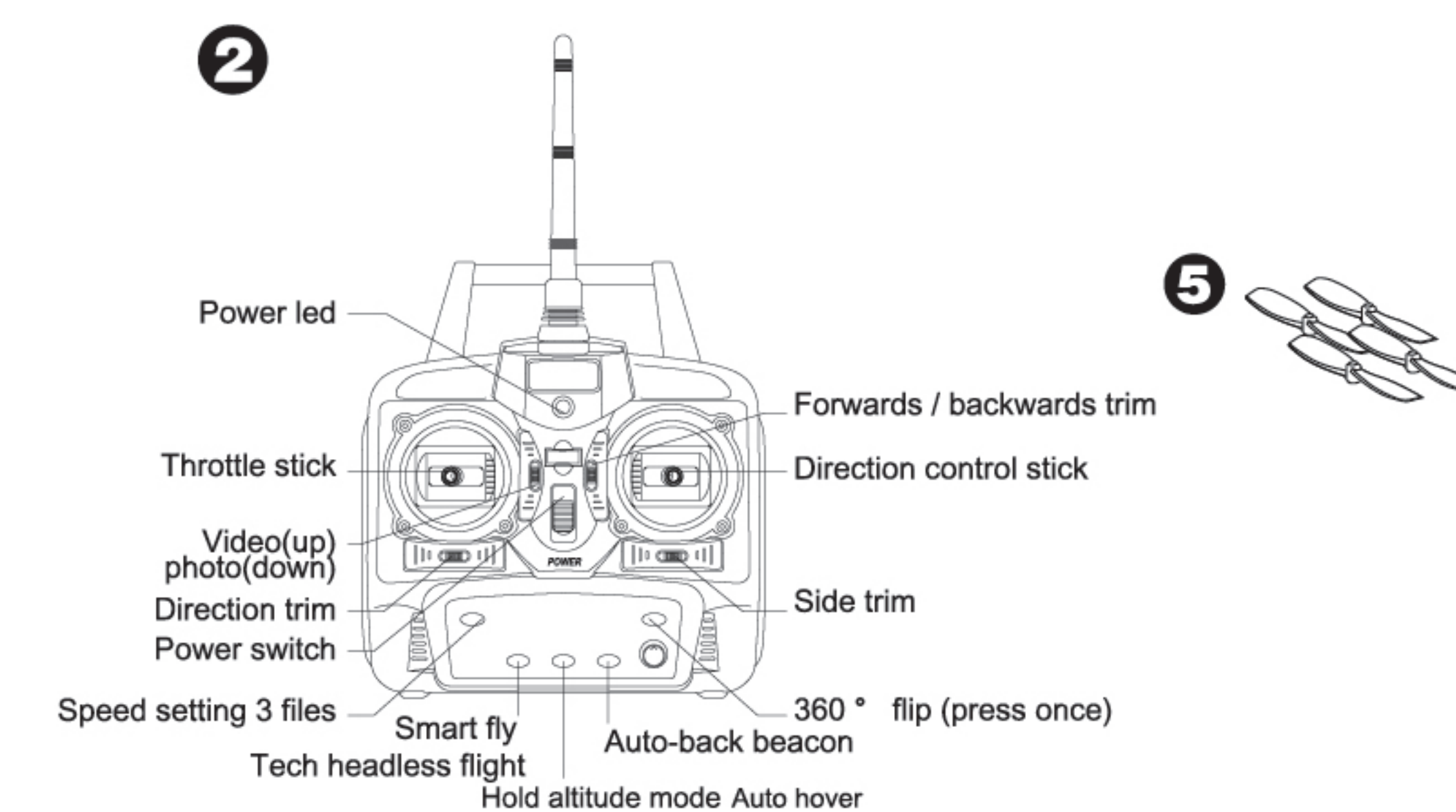
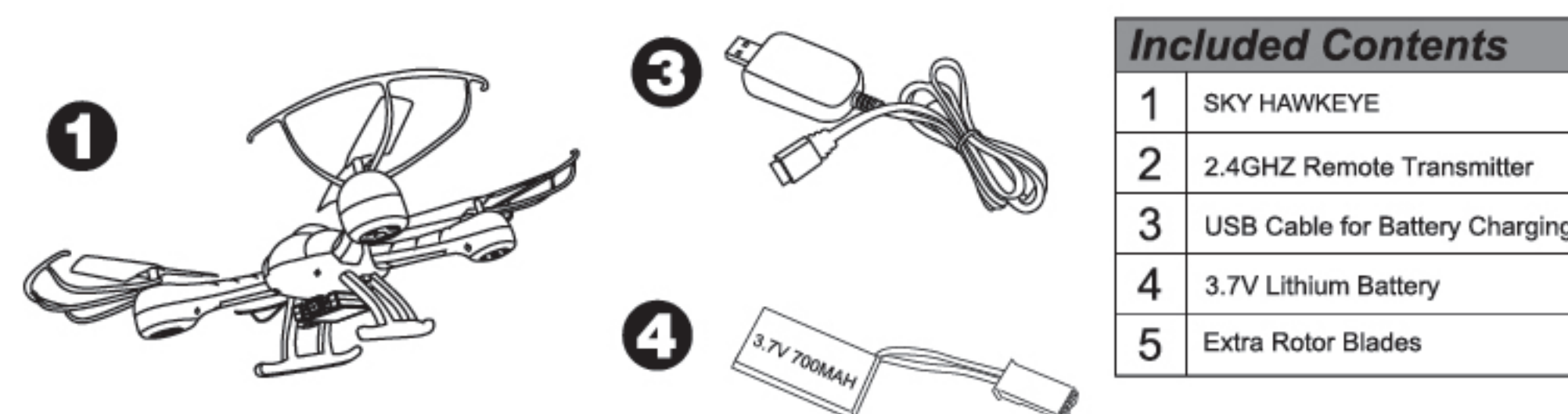
-1-

NEVER LEAVE IT UNATTENDED WHILE CHARGING THIS CAN BE A FIRE HAZARD. WE ARE NOT RESPONSIBLE FOR MISUSE.

Batteries:

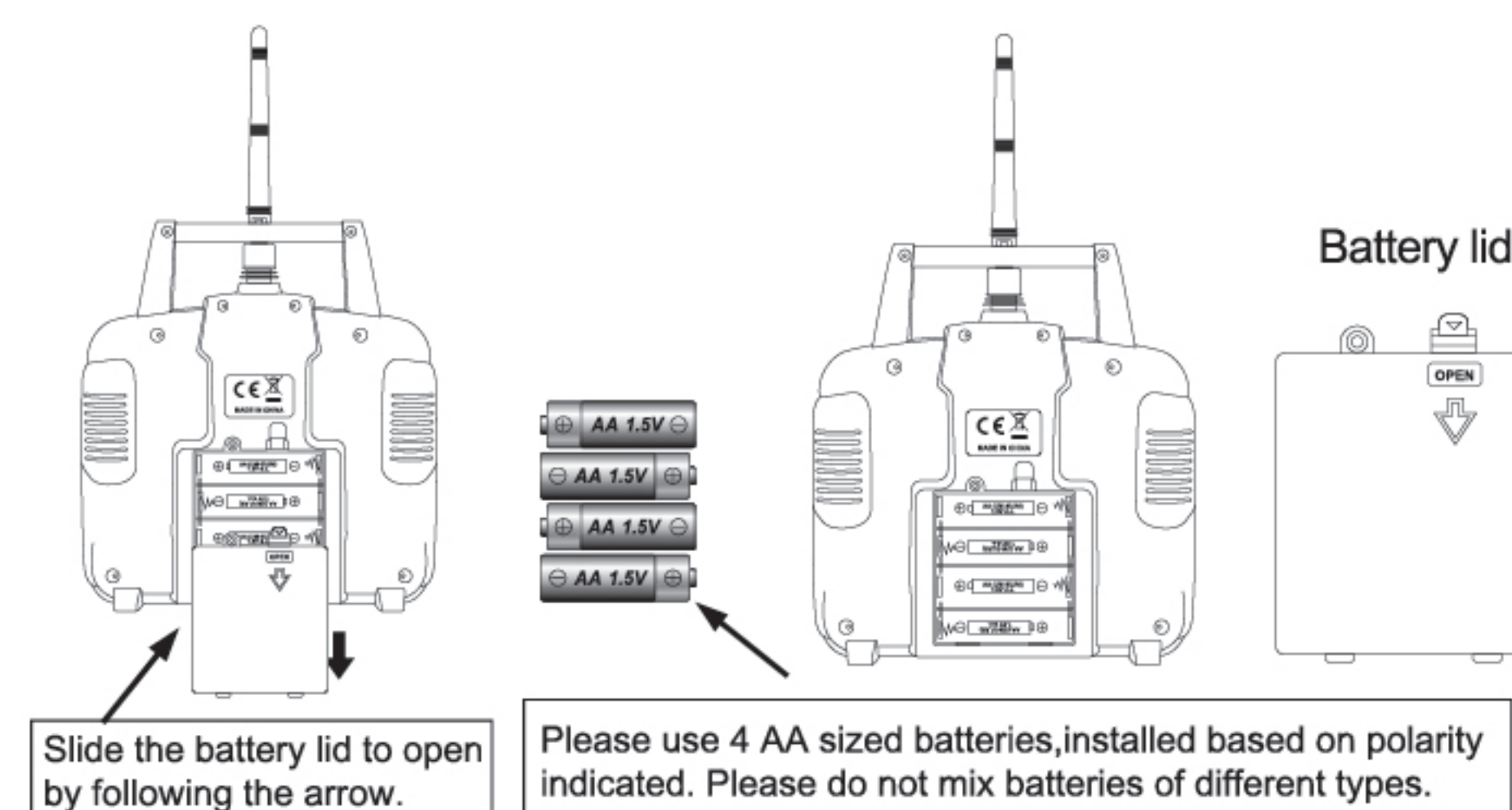
- *Use "AA" non-rechargeable battery or "AA" rechargeable battery.
- *Only use batteries of the same or equivalent type as recommended
- *Batteries are to be inserted with correct polarity.
- *Do not short cut the supply terminals.
- *Lithium-ion battery could be flammable if misused.
- *Do not mix old and new batteries.
- *Do not mix alkaline batteries, standard (carbon-zinc), or rechargeable (Nickel-Cadmium) batteries.
- *Remove exhausted batteries.
- *Take out the batteries when not in use.
- *Rechargeable batteries are to be removed from the toy before being charged.
- *If you do not fly the Quadcopter for a long time, take out the batteries inside the controller to avoid battery leakage which would damage the product.
- *Photos are for reference only; the appearance of the actual product is based on what it is.
- *When the controller/helicopter is underpowered, the control distance will be shortened. This will also result in difficulty of taking off and low flight altitude.
- *Do not crash or allow helicopter to fall from high altitude. Helicopter will break and service life may be reduced

Please retain this information for future reference

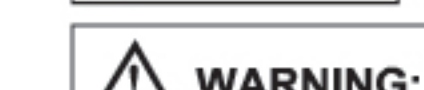


-2-

TRANSMITTER BATTERY INSTALLATION

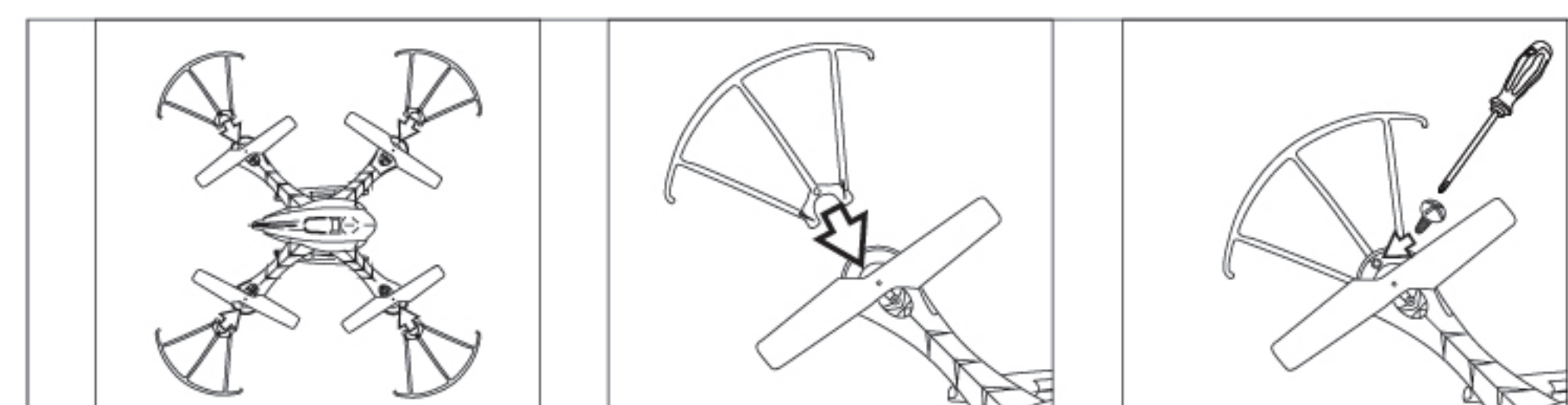


If transmitter is not to be used for a long duration, please remove batteries for storage.



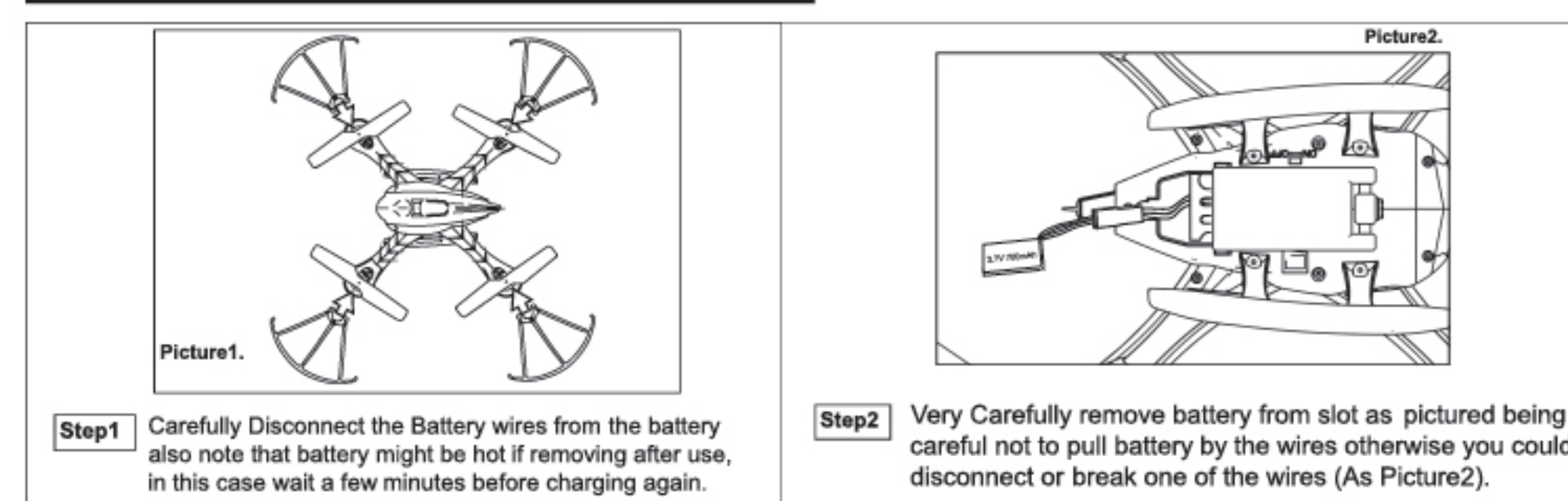
Warning: if the AA batteries are left in the transmitter, potential leakage could occur which may damage the transmitter, and create fire hazards.

THE PROTECTIVE COVERS FIXING



Use the screwdriver to fix the covers, which prevent any impact injury or damage.

THE PRODUCT BATTERY REFRESH



Step1 Carefully Disconnect the Battery wires from the battery also note that battery might be hot if removing after use, in this case wait a few minutes before charging again.

Step2 Very Carefully remove battery from slot as pictured being careful not to pull battery by the wires otherwise you could disconnect or break one of the wires (As Picture2).

-3-