



AGES 8+

INSTRUCTION MANUAL



Stunt Drone

BC

©2017 Discovery Communications, LLC. and the Discovery™ logo are trademarks of Discovery Communications, LLC. used under license. All rights reserved. discoverykids.com

©2017 MerchSource, LLC. All rights reserved. Distributed by MerchSource, LLC, Irvine, CA 92618.

For customer support, please visit www.merchsource.com or call 1-800-374-2744.

The artwork and design of this manual are protected by US copyright law and may not be reproduced, distributed, displayed, published or used for any purpose without prior written permission. It is not permitted to alter, remove or reproduce any trademarks or copyright notice from this manual.

Patent Pending

Printed in China



Introduction

Congratulations on your purchase of the Discovery™ Stunt Drone Zip 360 Degrees. It's time for some fun. This drone is capable of total controlled flight, fly up/down, left/right, and pitch forward or backward, on 6 axis gyro stabilization with a control range of 150 feet. Includes USB charging cable, replacement blades and auto pilot technology for auto orientation, auto take-off and auto landing control. Included, is a 350 mAh Li-po drone battery. The remote controller requires 6 "AA" batteries (not included). Alkaline batteries are recommended. Charging time: 60 minutes. The maximum recommended altitude is 75 Feet.

Please read all instructions and warnings in this manual prior to using your Stunt Drone Zip 360 Degrees, and keep this instruction manual as it contains important information for future reference. Adult assembly and a Phillips screwdriver (not included) will be required for battery installation.

Table of Contents

General Warnings	Page 2
Contents and Remote Battery installation	Page 3
Charging LiPo Battery and Replacing Propellers	Page 4
Remote Overview	Page 5
Operating Drone	Page 6, 7
Other Features	Page 8

1. Prepare for flight

- Drone must be charged before each use (Cable included).
- Indicator light on USB plug will turn off when fully charged.
- Install batteries in remote.

2. Choose your experience level

- Expert or Starter.

3. Pair your drone

- Before each flight pair the remote with the drone:
1. Turn your drone on and place on a flat, level surface.
  2. Turn the remote on and move the left joystick up, then down.
  3. The beep will indicate successful pairing.
  4. Repeat steps 1 and 2 if necessary.

4. Remote Control Overview

Practice flying your drone below 10 feet and at low speeds until comfortable with all controls to avoid unnecessary damage or injury.

- Left joystick: Up/Down controls elevation.
- Right joystick: controls flight direction
- Direction Trim: Use to eliminate drift
- To cut power to drone, move left joystick to down position.

ADULT ASSEMBLY, CHARGING, AND BATTERY INSTALLATION IS REQUIRED. ADULT SUPERVISION IS REQUIRED. AGES 6+

SAFETY WARNINGS

- Not recommended for children under 6 years of age. As with all electrical products, precautions should be observed during handling and use to reduce the risk of electrical shock.
- Adult supervision is required at all times
- Never fly drones above or near people, sudden changes in wind or other conditions could lead to unexpected crashes.
- Always use caution when flying drone vehicles, obey relevant laws, respect the privacy and property rights of others.
- The drone shall never be modified or used for anything except its intended purpose.
- Before each use, an adult should review the product and battery to determine that no damage or hazards exist.
- **DO NOT TOUCH SPINNING PROPELLERS**
- Do not allow anything to intentionally make contact in any way with spinning propellers or prevent contact with spinning blades by turning off remote prior to handling drone.
- **Use caution and pay attention to your surroundings while operating drone**
- Do not fly drone into animals, people, or inanimate objects
- Keep drone away from power lines, buildings, trees, public areas, and any other potentially hazardous areas.
- Do not operate in rain, heavy wind, and or any type of severe weather
- Do not land drone on wet surfaces
- Never touch or allow others to touch drone while it is flying
- Always turn drone off when it is not in use
- Always fly drone in large open areas

This device complies with Part 15 of the FCC Rules. Operation is subject to the following two conditions: (1) this device may not cause harmful interference, and (2) this device must accept any interference received, including that which may cause undesired operation.

WARNING: Changes or modifications to this unit not expressly approved by the party responsible for compliance could void the user's authority to operate the equipment.

Note: This equipment has been tested and found to comply with the limits for a Class B digital device, pursuant to Part 15 of the FCC Rules. These limits are designed to provide reasonable protection against harmful interference in a residential installation. This equipment generates, uses and can radiate radio frequency energy and, if not installed and used in accordance with the instructions, may cause harmful interference to radio communications. However there is no guarantee that interference will not occur in a particular installation.

If this equipment does cause harmful interference to radio or television reception, which can be determined by turning the equipment off and on, the user is encouraged to try to correct the interference by one or more of the following measures:

- Reorient or relocate the receiving antenna.
- Increase the separation between the equipment and receiver.
- Connect the equipment into an outlet on a circuit different from that to which the receiver is connected.
- Consult the dealer or an experienced radio/TV technician for help.

Fly-aways are the responsibility of the individual pilot and will not be replaced by the manufacturer.

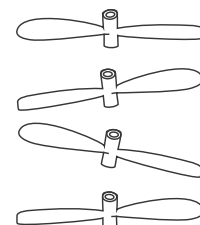
Contents



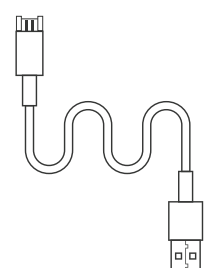
Drone



Drone Controller

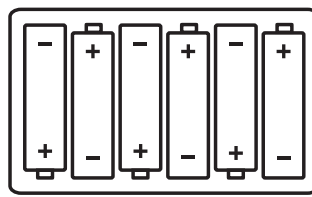


4 Replacement Propellers & 4 Replacement Screws



USB Charger Cable

Remote Battery Installation



1. Slide open the remote's battery compartment.
2. Install 6 "AA" batteries as shown in the diagram above.
3. Replace and close battery compartment

BATTERY WARNING - LITHIUM-POLYMER:

- There is a risk of fire and personal injury if Li-Poly battery is punctured, damaged or misused.
- Never expose battery to extreme temperatures or moisture.
  - Do not subject battery to strong magnets.
  - Always keep battery away from flammable materials.
  - Do not use non-authorized (specified batteries), charger(s) and/or adapter, if applicable, specified by the manufacturer.
  - Battery is not rechargeable.
  - Let battery cool to room temperature before charging.
  - While charging, never leave battery unattended.
  - Recycle or dispose of battery according to federal, state and local laws.
- KEEP THIS PACKAGING FOR REFERENCE AS IT CONTAINS IMPORTANT INFORMATION.

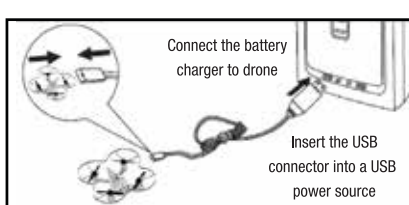
BATTERY WARNING:

- Do not use old and new batteries.
  - Do not use alkaline, standard (carbon-zinc), or rechargeable batteries.
  - Insert batteries using the correct polarity. Do not short-circuit the supply terminal.
  - Remove batteries when not in use. Recycle or dispose of unneeded batteries according to federal, state, and local laws. Do not dispose of batteries in a fire - they may catch or explode.
  - Only use manufacturer specified batteries, charger(s) and/or adapter, if applicable, specified by the manufacturer.
  - Charge, use, replace, and recharge (if applicable) batteries under adult supervision.
- KEEP THIS PACKAGING FOR REFERENCE AS IT CONTAINS IMPORTANT INFORMATION.

Charging Battery

1. Turn off the drone before charging.
2. Connect the battery charger cable to the port found on the rear of the drone.
3. Connect USB connector to the power source.

Note: The Battery Charger will light up when it is charging the battery and turn off when the battery is fully charged. Charge time is approximately 60 Minutes.

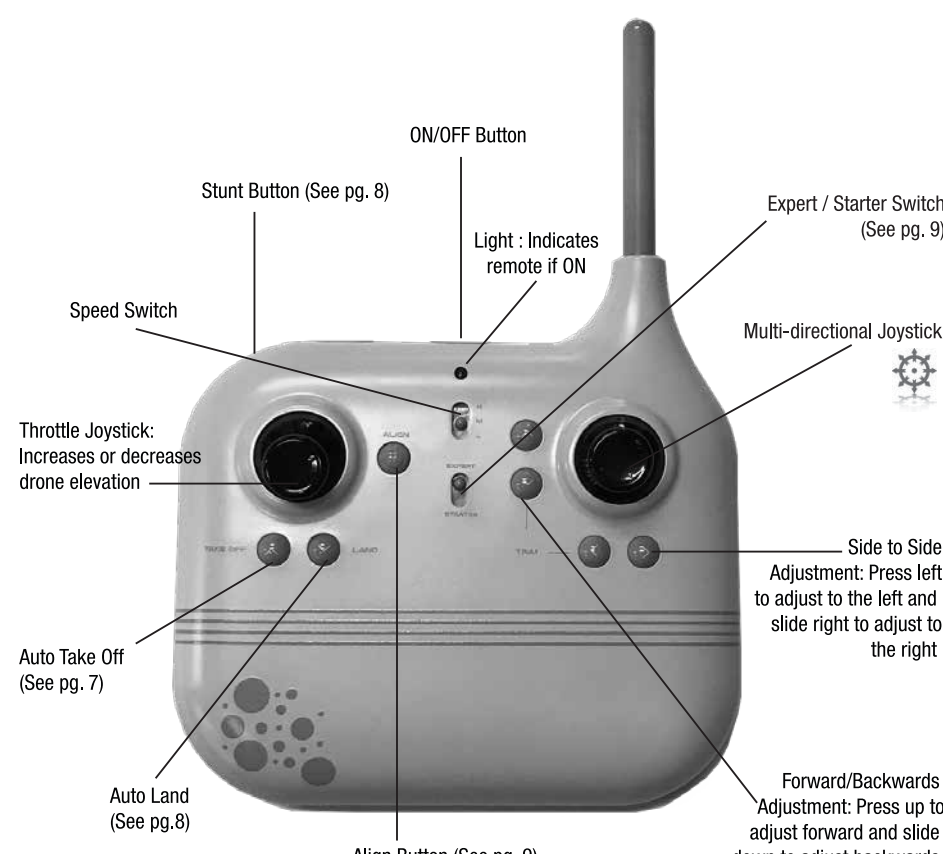


Replacing Propellers



- Only an adult should replace blades. To remove, pull up the blades directly.
- Replace propellers by following the diagram.
- Each blade spins differently. Blade 1 spins counter clockwise and Blade 2 spins clockwise.

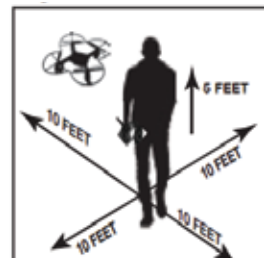
Remote Overview



Operating Drone

Step 1 - Pre-Flight Checklist

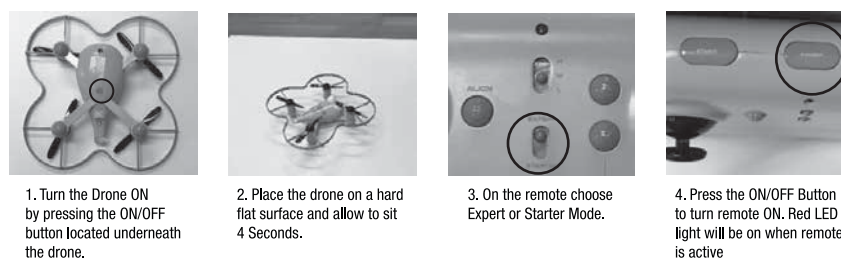
1. Read all warnings and instructions.
2. Install remote batteries, page 4.
3. Charge batteries, page 4.
4. Make sure that the drone and remote are powered off.



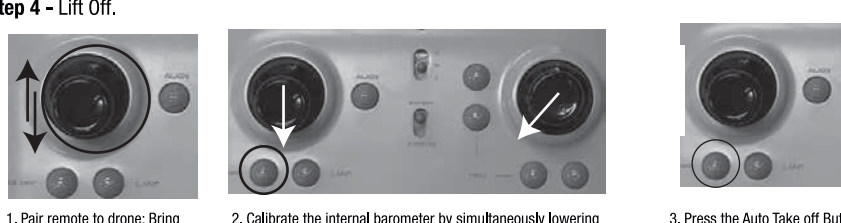
Step 2 - Choosing a location.

- Drone is designed to be flown indoors and outdoors.
- Always make sure you have enough space to fly drone.
- Always follow warnings, page 2.

Step 3 - Pre-Flight Prep - Kids and first time flyers should use the Starter Setting, see Starter Mode page.



Step 4 - Lift Off.



Step 5 - Operating Drone in Flight.



1. Follow this step if your drone begins to drift during take off or during flight.
  2. Use the Throttle Joystick to increase or decrease your elevation.
  3. Use the Multi Directional Joystick to move forwards, backwards or side to side.
  4. Stunt - Press the Stunt Button to increase the Multi Directional Joystick in the direction you want to complete a stunt.
- Note: The Stunt button is active only when the Expert/Starter Switch is set to Expert

Step 6 - Landing Drone



1. Lower drone to 20 feet or less then press the Auto Land button. Use the Multi Directional Joystick to maneuver drone. Press the Auto Land Button a second time to activate auto land, only after the drone has come to rest and the blades have stopped rotating.
2. In the event the blades will not stop spinning, you can perform an emergency stop. Press the Align Button and hold for 3 seconds.

Step 7 - Retrieving Drone



1. Turn off your remote by pressing the Power Button. This will stop you from accidentally turning the propellers on.
2. Make sure the propellers have stopped spinning then pick up your drone.
- Note: You will need to pair your drone again before your next flight, (part 1 of step 4).

Other Features

Align



Press the Align Button to turn Align mode ON and then again to turn off.

- In this mode, the drone will always move in the direction you press the Multi Directional Button no matter which way the drone faces.
- To stop blades in case of an emergency.

Expert and Starter Modes - Starter Mode is recommended for children.

Expert Mode - All features unlocked

- Starter Mode is locked.
- Max elevation of 8.5 feet.
- Throttle Joystick is less responsive.
- Speed Switches are disabled.

Tips

- Do not crash drone into sand or dirt. Drone gears may become clogged.
- When first learning to fly, practice lifting off and hovering.
- Stay several feet from walls and buildings.