

Shark®

OWNER'S GUIDE

S3101 series
S3202 series



IMPORTANT SAFETY INSTRUCTIONS

SAVE THESE INSTRUCTIONS

For Household Use Only

WHEN USING YOUR SHARK® STEAM MOP, BASIC SAFETY PRECAUTIONS SHOULD ALWAYS BE FOLLOWED, INCLUDING THE FOLLOWING:

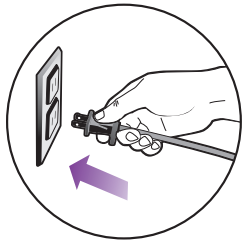
READ ALL INSTRUCTIONS BEFORE USING YOUR STEAM MOP.

DANGER OF SCALDING.

Please use caution when using the steam mop. The steam emitted from the openings is very hot.


POLARIZED PLUG:

This appliance has a polarized plug (one blade is wider than the other). As a safety feature, this plug will fit into a polarized outlet only one way. If the plug does not fit fully into the outlet, reverse the plug. If it still does not fit, contact a qualified electrician. **Do not attempt to defeat this safety feature.**



1. Use the system only for its intended use.
2. **DO NOT** use outdoors.
3. **DO NOT** leave the appliance unattended when plugged in. Always unplug the power cord from the electrical outlet when not in use and before servicing.
4. **DO NOT** allow the appliance to be used as a toy. Close attention is necessary when used by or near children, pets or plants. **DO NOT** leave appliance unattended while connected.
5. Use only as described in this manual.
6. Use only manufacturer's recommended accessories.
7. **DO NOT** operate the appliance with a damaged plug or cord, or if the unit has been dropped or damaged. To avoid the risk of electric shock, do not disassemble or attempt to repair the appliance on your own. Return the appliance to EURO-PRO Operating LLC (see warranty) for examination and repair. Incorrect re-assembly or repair can cause a risk of electrical shock or injury to persons when the appliance is used.
8. To protect against a risk of electric shock, **DO NOT** immerse the steam mop into water or any other liquids.
9. **DO NOT** handle plug or steam mop with wet hands or operate appliance without shoes.
10. **DO NOT** pull or carry by power cord, use power cord as handle, close a door on the power cord, or pull the power cord around sharp edges or corners. Keep power cord away from heated surfaces.

11. **DO NOT** unplug by pulling on power cord. To unplug, grasp the plug not the power cord. Do not use extension cords or outlets with inadequate current carrying capacity.
12. **DO NOT** put any objects into openings. Do not use with any opening blocked.
13. **DO NOT** put hands or feet under the steam mop. Unit gets very hot.
14. Use **ONLY** on flat, horizontal surfaces. Do not use on walls, counters or windows.
15. **DO NOT** use on leather, wax polished furniture or floors, synthetic fabrics, velvet or other delicate, steam sensitive materials.
16. **DO NOT** add cleaning solutions, scented perfumes, oils or any other chemicals to the water used in this appliance as this may damage the unit or make it unsafe for use. If you live in a hard water area, we recommend using distilled water in your steam mop.
17. When in use, NEVER turn the appliance over or on its side. **NEVER DIRECT STEAM TOWARDS PEOPLE, ANIMALS OR PLANTS.**
18. **NEVER LEAVE THE STEAM MOP IN ONE SPOT ON ANY SURFACE FOR ANY PERIOD OF TIME WHEN MICRO-FIBER PAD IS ATTACHED.**
19. Carefully remove the micro-fiber pad immediately after you have finished using the steam mop.
20. When cleaning the steam mop, unplug the power cord from the electrical outlet and clean with a dry or damp cloth. Do not pour water or use alcohol, benzene or paint thinner on the unit.
21. Extreme caution should be exercised when using this appliance to clean stairs.
22. Never use steam mop without micro-fiber pad attached.
23. Keep your work area well lit.
24. Store steam mop indoors in a cool, dry place.
25. To avoid circuit overload, do not operate another appliance on the same socket (circuit) as the steam cleaner.
26. If an extension cord is absolutely necessary, an extension cord rated a minimum of 15 ampere, 14 gage cord should be used. Cords rated for less amperage may overheat. Care should be taken to arrange cord so that it cannot be pulled or tripped over.
27. **DO NOT** leave unattended when the system is connected to a power supply/electrical outlet.
28. **DO NOT** store unit with damp/wet micro-fiber cleaning pad attached. Never leave the steam mop in one spot on any surface for any period of time with a damp or wet micro-fiber cleaning pad attached as this will damage your floors

 **WARNING:** Your steam mop is designed to clean hard floor surfaces that will withstand high heat. Do not use on unsealed wood or unglazed ceramic floors. On surfaces that have been treated with wax or some no wax floors, the sheen may be removed by the heat and steam action. It is always recommended to test an isolated area of the surface to be cleaned before proceeding. We also recommend that you check the use and care instructions from the floor manufacturer.



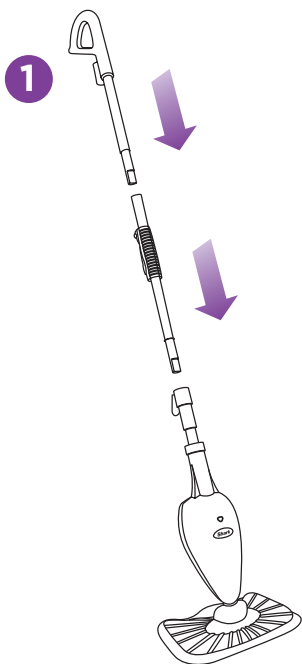
TOLL FREE: 1-800-798-7398

www.sharkclean.com

Quick Start

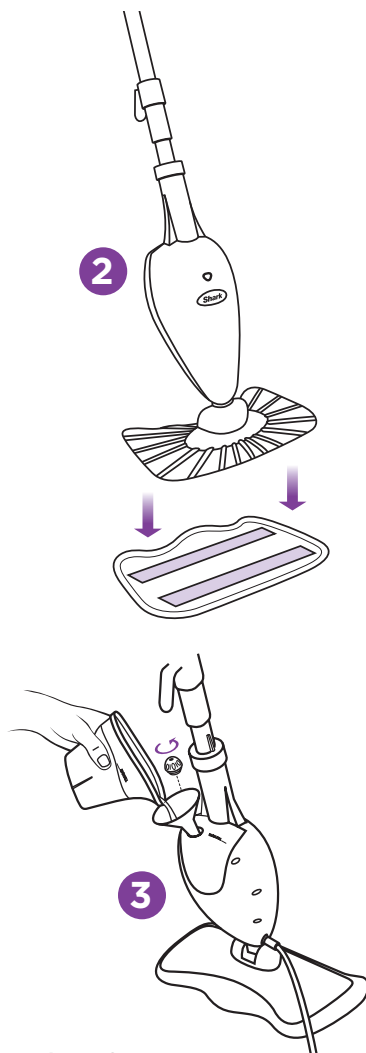
ASSEMBLE

- 1 Fit together the extension tubes as shown in the illustration. See page 2 for more detailed assembly instructions.
- 2 Place the micro-fiber cleaning cloth underneath the mop head, with quick fastener strips facing up. Simply press the pad to the mop to attach it.



FILL

- 3 Remove the cap to fill the Water Tank. Using the filling flask and funnel, fill the tank, keeping the water under the "MAX FILL" line. Don't forget to replace the cap.



ADJUST

- 4 For your comfort, you can adjust the height of the mop. Just lift the latch on the tube 90 degrees to the open position. Holding the handle, extend the tube to the height that's right for you and then close latch to locked position.

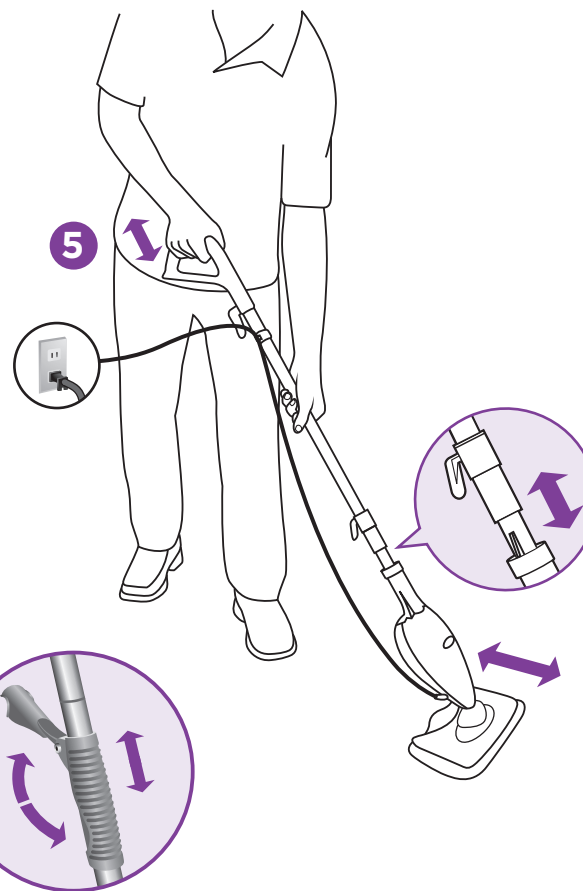
⚠ QUICK TIP: If you find the Steam Mop difficult to push/pull during use, then simply increase the height of the pole.

PRIME STEAM

- 5 Plug in the mop. Wait 30 seconds for the unit to heat up and the steam to be ready.

Push the handle toward the mop head in a pumping motion. To prime simply pump the handle 10-15 times to generate the steam.

⚠ QUICK TIP: Customize steam output by slow or fast mopping with a forward and backward motion.



TOLL FREE: 1-800-798-7398

www.sharkclean.com

Contents

Thank you for
purchasing
the Shark®
Steam Mop.

GETTING STARTED.....	2
USING YOUR STEAM MOP.....	6
USING YOUR ACCESSORIES.....	8
CARE OF YOUR STEAM MOP.....	9
TROUBLESHOOTING	10
WARRANTY AND REGISTRATION.....	11

This manual covers model numbers:

S3101 11
S3101A 11
S3101C 11
S3101CO 11
S3101CP 11
S3101WT 11
S3101Z 11
S3202 11
S3202C 11

TECHNICAL SPECIFICATIONS

Voltage: 120V., 60Hz.
Power: 1550 Watts
Water Capacity: 250 ml (8 oz.)



TOLL FREE: 1-800-798-7398

Getting Started

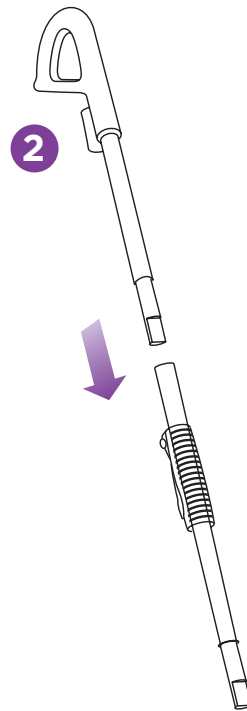
When assembling your steam mop there may be a little water in or around the water tank. This is because we test all our steam mops 100% before you buy them, so you get a quality Shark® Steam Mop.



FIRST THINGS FIRST, YOU NEED TO KNOW WHAT'S IN THE BOX YOU JUST OPENED:

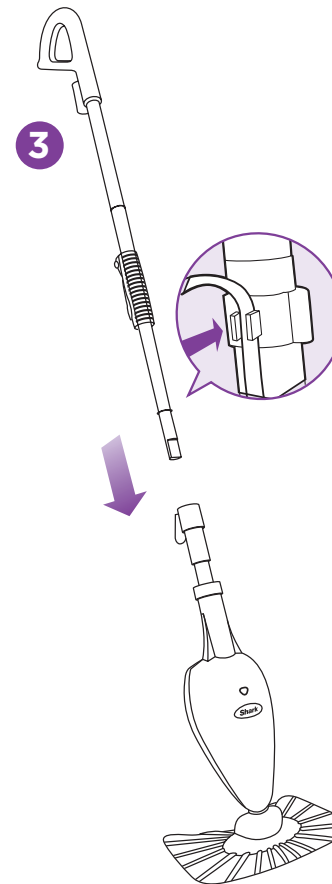
- a** Upper Extension Tube
- b** Lower Extension Tube (Telescopic)
- c** Steam Mop Base
- d** Micro-Fiber Pads
- e** Filling Flask
- f** Funnel
- g** Carpet Glider*

▲ NOTE: The Carpet Glider* (**g**) is an optional attachment and is sold separately.



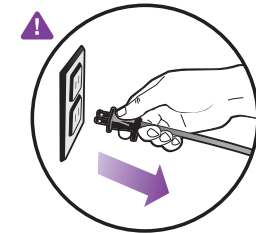
YOUR SHARK STEAM MOP IS EASY TO ASSEMBLE

- 1** First remove all the parts from the package. We know you're excited about the Shark Steam Mop, but don't plug it in until it's fully assembled and you've read all of the following instructions.
- 2** Slide the upper extension tube (the tube with the handle) into the lower extension tube (the short tube). Push the two extension tubes together in until you hear it click into place. See illustration for a visual explanation.

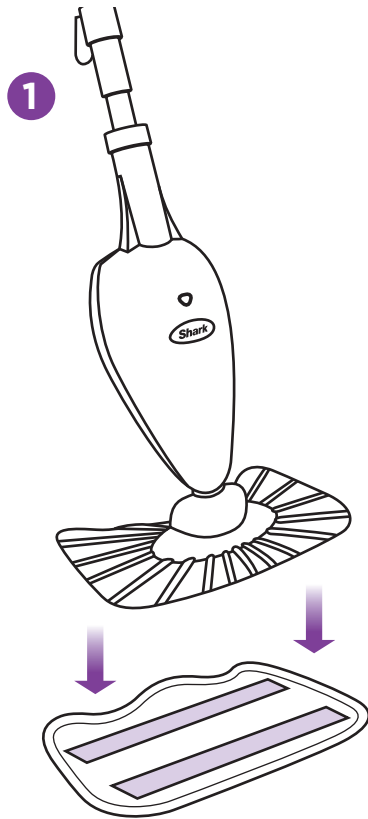


- 3** Insert the pieces you assembled in Step 2 into the pump actuator (the tube that leads to the tank). Push the extension tube assembly and pump actuator together in until you hear it click into place. Insert cord into cord clip on the shaft of the steam-mop.

💡 Each micro-fiber cleaning pad has a white or blue colored tab so that you can use a different pad for different tasks. Use one color for tough grime on tile floors, another color for stubborn spots on linoleum and another color for pet stains. Keep your floors happy! Always attach the micro-fiber cleaning pad to the mop head or you may scratch your floor surface.



- ▲ IMPORTANT:** Always make sure that your Steam Mop is unplugged from the wall before you attach the micro-fiber cleaning pad.



💡 Each micro-fiber cleaning pad has a colored tab so that you can use a different pad for different tasks. Use one color for tough grime on tile floors, another color for stubborn spots on linoleum and another color for pet stains. Keep your floors happy! Always attach the micro-fiber cleaning pad to the mop head or you may scratch your floor surface.

PLACING THE MICRO-FIBER PAD

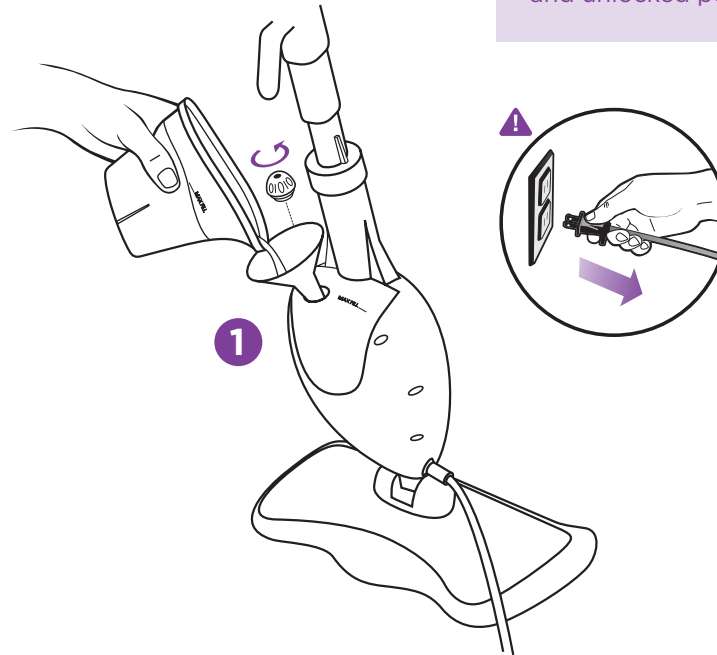
1 Place the micro-fiber cleaning cloth underneath the mop head, with the quick fastener strips facing up. Simply press the pad on to the Steam Mop.

⚠️ **IMPORTANT:** Make sure you only add water to the tank. Chemicals or cleaning solution may damage the appliance and could be unsafe for you and your family.

⚠️ **NOTE:** Don't be alarmed if the first time you use your Steam Mop, you notice water inside the water tank or drops of water in the packaging. It's normal to see this water. Your Steam Mop was 100% tested in the factory to ensure your safety and your floor's happiness. If you see water in the unit, it's from these tests.

To order additional Micro-Fiber pads, feel free to contact us at www.sharkclean.com or call **1-800-798-7398**.

💡 The water tank cap has an arrow to indicate the locked and unlocked position.



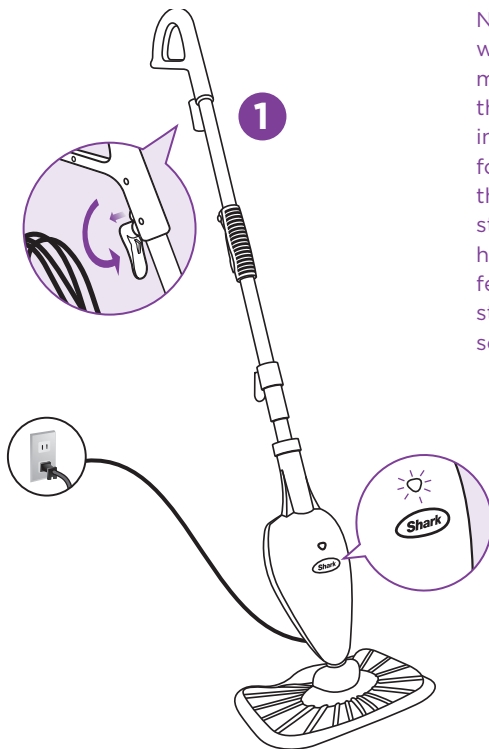
FILLING THE WATER TANK

⚠️ **IMPORTANT:** Before you fill up the tank, make sure your Steam Mop is unplugged from the wall.

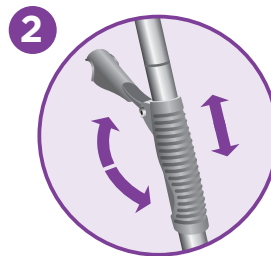
1 First, remove the water tank cap by turning it counter clockwise to the unlocked position. See illustration for a visual explanation.

2 The filling flask and funnel included with your Steam Mop make filling the water tank as simple as getting a glass of water from the sink. Fill the flask with water and use the funnel to pour it into the tank. Be sure to keep the water under the MAX FILL line; just one flask of water is enough for your Steam Mop. See illustration for a visual explanation.

3 Replace the water tank cap by turning it clockwise to the locked position.



Now comes the part you've been waiting for - it's time to use your steam mop. When you use your steam mop for the first time or haven't used the unit in awhile, it may take a minute or two for the water to make its way through the pump and into the heater to create steam. Get it started by pumping the handle a few times. If you've waited a few minutes and you still don't see any steam, reference the troubleshooting section on page 10.



💡 When your Steam Mop stops steaming, it could be out of water. Unplug the power cord from the electrical outlet and refill the water tank at anytime.

⚠ IMPORTANT: Your Steam Mop needs water to make steam! Never use your Steam Mop without water in the tank.

Sweep or vacuum your floors before using your Steam Mop. Your Steam Mop was designed to get rid of stuck-on gunk, grime, paw/footprints and it will do a better job if yesterday's cereal crumbs aren't in the way.

Visit www.sharkclean.com for other great quick cleaning products to complement your Steam Mop.

1 Pull and twist the quick release cord holder to unwrap the power cord completely. Plug into a 120-volt electrical outlet. The "On" light will turn green. Success! If your light doesn't turn on reference the Troubleshooting section on page 10.

2 For your comfort, you can adjust the height of the mop. Just lift the latch on the tube 90 degrees to the open position. Holding the handle, extend the tube to the height that's right for you and then close latch to locked position.

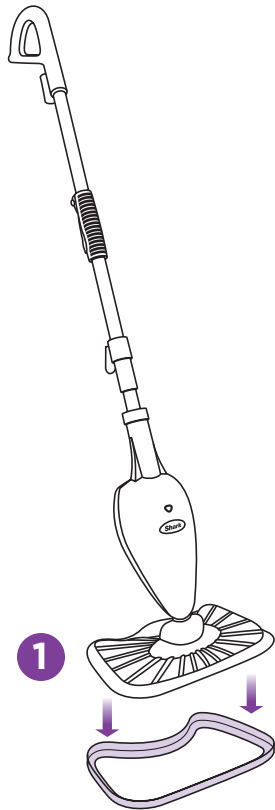
3 It takes about 30 seconds for the steam to get going. Now pump the handle a few times to prime the pump and activate steam.

4 Mop with a forward and backward motion to customize steam output automatically.

QUICK TIP: If you find the Steam Mop difficult to push/pull during use, then simply increase the height of the pole.

⚠ IMPORTANT: When your floors are sparkling clean and you're finished with your Steam Mop, unplug it from the electrical outlet and carefully remove the micro-fiber cleaning pad from the mop head. Always remove the micro-fiber cleaning pad from the mop head when you have finished using your Steam Mop to avoid damage to your floors. The steam will make your micro-fiber cleaning pad very hot. You may want to wait a couple of minutes to let it cool off before you remove it.

Using Your Accessories (optional)




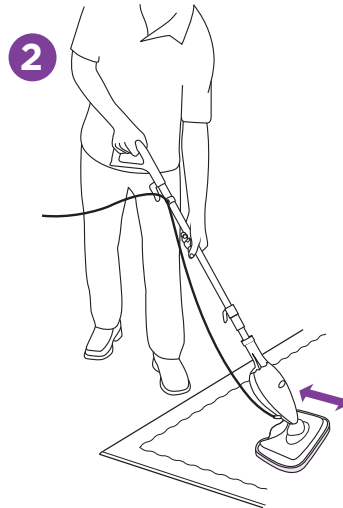
THE CARPET GLIDER (optional)

Just like you, your Steam Mop is versatile! The carpet glider transforms your Steam Mop in no time. Now you can freshen and deodorize your carpets and area rugs with the power of steam.

PUTTING THE CARPET GLIDER ON

- 1 Set the carpet glider on the carpet with the smooth side down. Place the mop head, with the cleaning pad attached, on top of the carpet glider. Your Steam Mop will rest on top of the glider, not attach to it.

 The Steam Mop won't clean your carpeting or area rugs, but it's great for deodorizing and freshening carpets and area rugs.




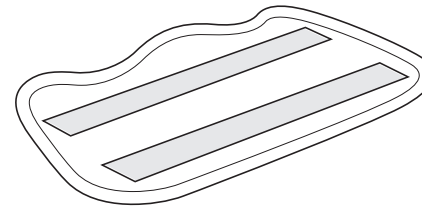
USING THE CARPET GLIDER

- 2 Plug in your Steam Mop and begin freshening your carpet by pushing the mop and glider back and forth to release steam, just as you do on hard floors. When the carpet is nice and fresh and you're finished using the Steam Mop, unplug it and store it as you would normally.

Care of Your Steam Mop

English

 Always remove the micro-fiber cleaning pad from the Steam Mop head when you store your Steam Mop to avoid damage to your floors.






KEEPING YOUR MICRO-FIBER CLEANING PAD AS GOOD AS NEW

Your steam activated micro-fiber cleaning pad works wonders for you, so return the favor by giving it the care it deserves.

- 1 Wash pads in warm water. Wash separately from other laundry. Only use liquid detergent. (no powder detergent) Don't use any fabric softeners. Line dry or dry on a low dryer setting.
- 2 If there are loose threads on the pad carefully cut the thread with scissors. Don't pull on them or cut at the base.

KEEPING YOUR STEAM MOP IN TIP-TOP SHAPE

If you love your Steam Mop, let it show. Caring for your Steam Mop and properly storing it means you'll get the same super steam action you expect each time you use it.

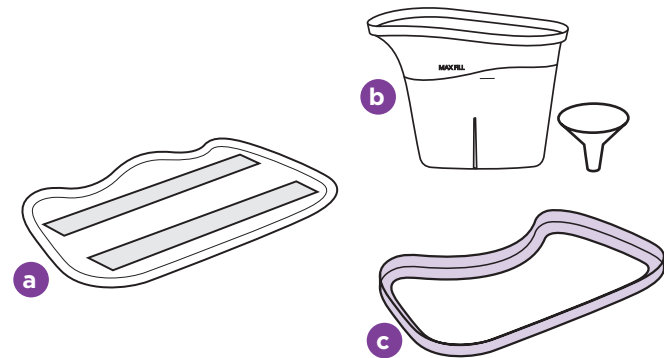
-  **IMPORTANT:** Both your Steam Mop and the water inside it can get very hot, so let it cool down completely before you store it.
-  **IMPORTANT:** Always store the Steam Mop in a safe place away from children and high traffic areas.
-  **NOTE:** It's a good idea to use distilled water in your tank to help prolong the life of your Steam Mop, especially if you live in an area with hard water.

Trouble Shooting

PROBLEM	POSSIBLE REASONS & SOLUTIONS
The Steam Mop will not turn-on.	Your steam-mop should be securely plugged into a 120V AC electrical outlet only. Check your fuse or breaker. If your unit still doesn't work, give us a call 1-800-798-7398 .
Steam Mop will not make steam.	Is there water in the water tank? If not, add water to your Steam Mop following instructions.
Steam Mop leaves water on the floor.	Is your micro-fiber cleaning pad too wet? Why don't you unplug your Steam Mop and change the micro-fiber cleaning pad.
Steam Mop left white spot on the floor.	Don't leave your steam-mop on the floor with a damp or wet cleaning pad. Do you have hard water? If you do you might want to switch to distilled water.
Floors are cloudy, streaky or spotty after steaming.	The pad might be dirty, change the pad. If you washed the pocket with powder detergent then the pad might have residual detergent left on it. Wash it again with liquid detergent. If you are cleaning in a kitchen area where there might be a build-up of grease then use a de greasing agent such as an all-purpose cleaner or dish soap and paper towels to clean the area first. You might have left the mop in the same spot for too long. Do you have hard water? If you do you might want to switch to distilled water. This might be leftover from past cleaners used on the floor surface. Use the steam mop a few more times and see if the leftover cloudiness is removed.
Steam Mop is hard to push.	Make sure the cleaning pad is on properly. If you find the Steam Mop difficult to push/pull during use, then simply increase the height of the pole.

Ordering Replacement Parts

English



ORDERING REPLACEMENT PARTS

To order additional parts and accessories, feel free to contact us at **www.sharkclean.com** or call **1-800-798-7398**.

NOTE: Some parts may be available at your local retailer.

PART	PART NO.
a Micro-Fiber Pads	XT3101W
b Filling Flask & Funnel	1015SO
c Carpet Glider	XCG3101



U.S.: EURO-PRO Operating LLC
Newton, MA 02459

Canada: EURO-PRO Operating LLC
4400 Bois Franc
Ville St. Laurent, Québec H4S 1A7

1-800-798-7398

www.sharkclean.com

COPYRIGHT © EURO-PRO OPERATING LLC 2010

PRINTED IN CHINA

S3101.SERIES.EF.100908

S3202.SERIES.EF.100908

Illustrations may differ from actual product.