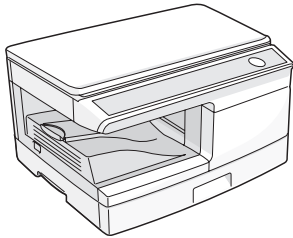


**SHARP**<sup>®</sup>



MODEL

**AR-203E X**

**DIGITAL MULTIFUNCTIONAL SYSTEM**

**PRINTER OPERATION MANUAL**

# Contents

## 1 Print

Printing Overview	1
Basic Printing	2
Starting the Printer Driver Using the "Start" Button	3
Printer Driver Settings	4
Printing a Watermark	5
Fitting the Printed Image to the Paper	6
Printing Multiple Pages on One Page	7
Outline of the Print Status Window	8

## 2 Printer Sharing

Sharing the Printer Using Windows Networking	9
Shared Printer Settings	10
Client Settings	11

## 3 Scan

Scanning Overview	13
Scanning an Image from a TWAIN-Compliant Application	14
Scanning an Image from a WIA-Compliant Application (Windows XP/Vista)	18
Scanning an Image from the "Scanner and Camera Wizard" (Windows XP)	20
Outline of Button Manager	23
Button Manager Settings	24

## 4 Troubleshooting

Identifying Unit Problems	25
Check the Connection between the Unit and Computer	26
Check Your Computer	27
Plug and Play Screen does not Appear	28
Failed to Install the Driver (Windows 2000/XP)	29
Faint, Uneven or Smeared Print Output	30
Characters or Graphics are not Printed in Correct Position	31
Nothing Prints	32
Poor Scanning Result	33
The Scanned Image is Incorrectly Positioned	34
Unable to Scan the Image	35

## 5 Printer Driver Features

Printer Driver Features	36
-------------------------	----

## 6 Index



### Note

- *In this manual, screen images and operating procedures are mainly for Windows XP. With other versions of Windows, some screen images may be different from those in this manual.*
- *Wherever "AR-xxxx" appears in this manual, please substitute your model name for "xxxx".*
- *For your information, please note that the SPF and the second cassette are provided as an option.*

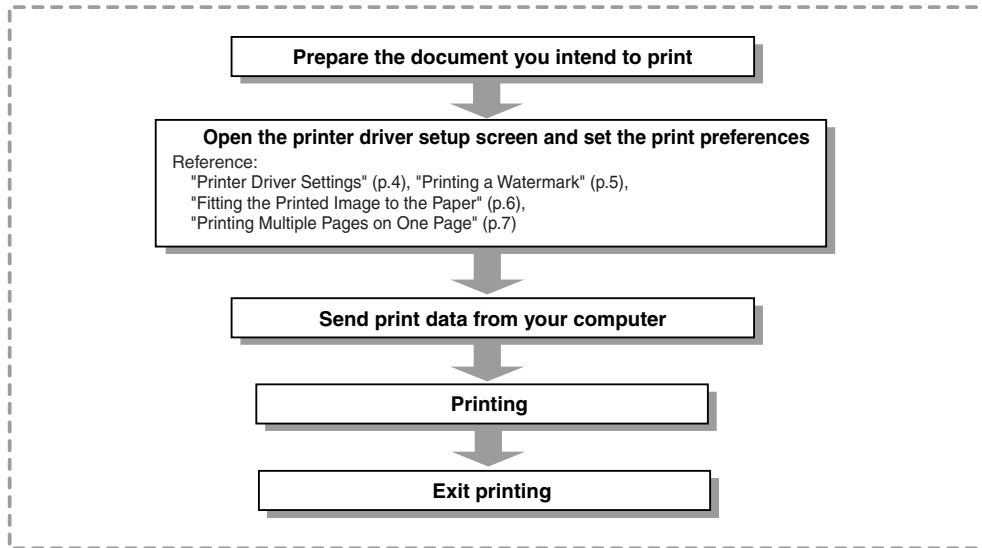
# 1 Printing Overview

The flow chart shown below provides printing overview.

**Reference:** For more information on printing, see "Basic Printing" (p.2).



- *When the paper source is the paper tray or multi-bypass tray, verify that the paper has been loaded before starting printing.*
- *Ensure printing has been completed before turning the power off. Do not remove the power cord before turning the unit off.*

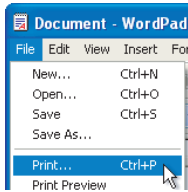


# 1 Basic Printing

This is a printing example using WordPad to print a document onto A4 size paper.

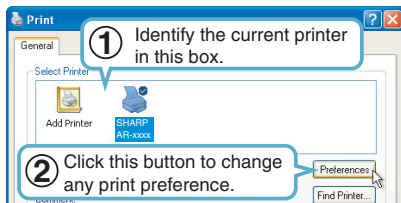
**1** Start WordPad, make a new file, and enter the text you intend to print.

**2** Select "Print" from the application's "File" menu.



**3** Make sure that "SHARP AR-xxxx" is selected as the current printer. If you intend to change any print setting, click the "Preferences" button to open the printer driver setup screen.

On Windows 98/Me, click the "Properties" button.



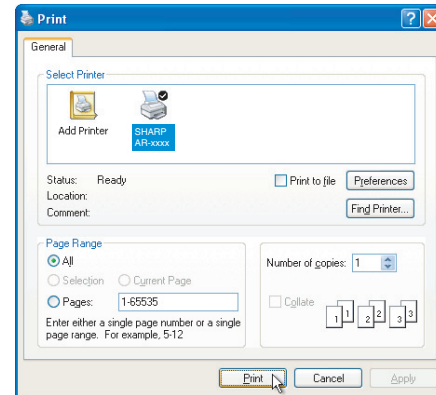
**Reference:** "Printer Driver Settings" (p.4),  
"Printing a Watermark" (p.5),  
"Fitting the Printed Image to the Paper" (p.6),  
"Printing Multiple Pages on One Page" (p.7)



**Note**

*Windows 2000 does not have the "Preferences" button on this dialog box. Switch to the desired tab by clicking it to specify printer settings.*

**4** Click the "Print" button in the "Print" dialog box. On Windows 98/Me, click the "OK" button.



Printing starts according to your preferences.

# 1 Starting the Printer Driver Using the "Start" Button

You can open the printer driver and change the printer driver settings from the Windows "start" button. Settings adjusted in this way will be the initial settings when you print from an application. (If you change the settings from the printer driver setup screen at the time of printing, the settings will revert to the initial settings when you quit the application.)

**Reference:** "Basic Printing" (p.2)

## Windows 2000/XP/Vista

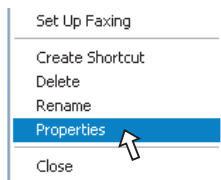
**1** Click the "start" button, and then click "Control Panel".

On Windows 2000, click the "Start" button and select "Settings".

**2** Click "Printers and Other Hardware", and then click "Printers and Faxes".

- On Windows Vista, click "Printer".
- On Windows 2000, click "Printers".

**3** Click the "SHARP AR-xxxx" printer driver icon and select "Properties" from the "File" menu.



On Windows Vista, click "Printer".

**4** Click the "Printing Preferences" button in the "General" tab.

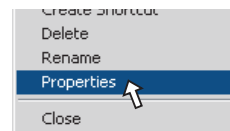
The printer driver setup screen will appear.

**Reference:** "Printer Driver Settings" (p.4)

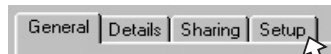
## Windows 98/Me

**1** Click the "Start" button, select "Settings" and then click "Printers".

**2** Click the "SHARP AR-xxxx" printer driver icon and select "Properties" from the "File" menu.



**3** Click the "Setup" tab.



The printer driver setup screen will appear.

**Reference:** "Printer Driver Settings" (p.4)

# 1 Printer Driver Settings

To view Help for a setting, click the (?) button in the upper right-hand corner of the window and then click the setting.

## Tab

Index which allows you to switch between the various setup screens.

## Check box

Click this option to activate/deactivate each function.

The settings you made at "N-Up Printing", "Document Style", "Fit To Paper Size", "Image Orientation" and "Watermark" are shown in this image.

## Check button

Allows you to select one item from a list of options.

The tray selected in "Paper Selection" in the "Paper" tab appears in blue. You can also click on a tray to select it.

## "OK" button


Click this button to save your settings, and exit the dialog box.

## "Cancel" button

Click this button to exit the dialog box without making any changes to the settings.

## (?) button

Click this button and then click a setting to view Help for the setting.


 You can also view Help by right-clicking the setting  
**Note** with the mouse.

## Drop-down list

Allows you to make one selection from a list of choices.

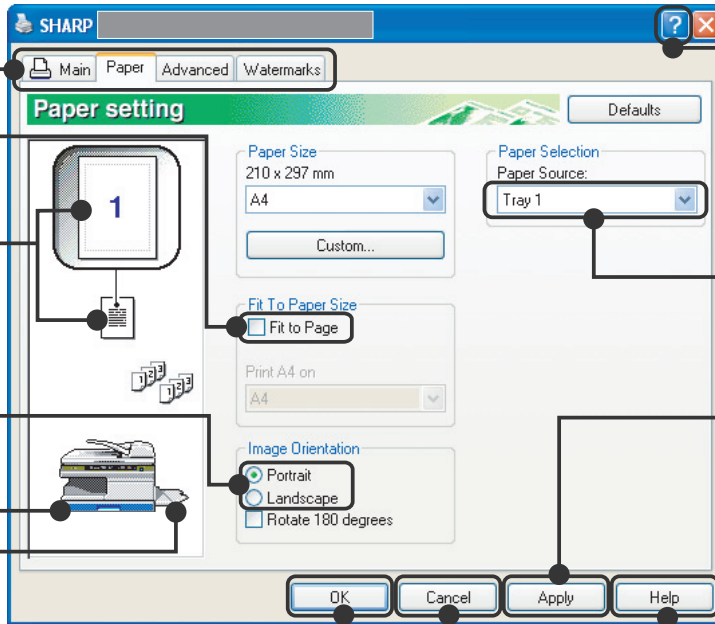
## "Apply" button

Click to save your settings without closing the dialog box.

 The "Apply" button does not appear when you open this window from an application.  
**Note**

## "Help" button

The Help window will open to let you view explanations of the settings on the tab.



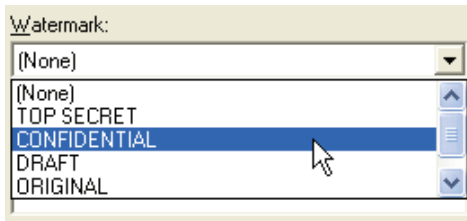
# 1 Printing a Watermark

To print a watermark, for example "CONFIDENTIAL", on your document, refer to the following steps. Open the printer driver and click the "Watermarks" tab.

**Reference:** See "Basic Printing" (p.2) for details on how to open the printer driver.

## How to Print a Watermark

From the "Watermark" drop-down list, select the watermark, for example "CONFIDENTIAL", you wish to print on your document, and start printing.



Print sample



For details on watermark settings, view printer driver Help.

**Reference:** "Printer Driver Settings" (p.4)

# 1 Fitting the Printed Image to the Paper

This printer driver can adjust the zoom ratio for printing according to the paper loaded in the unit. Follow the steps shown below to use this function. The instruction below assumes that you intend to print an A4 or Letter size document onto a B5 or Invoice size paper.



Note

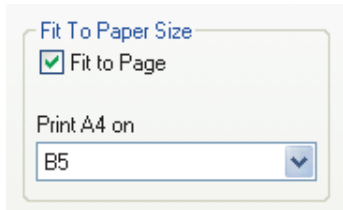
The "Fit To Paper Size" setting is not available when "N-Up Printing" is selected.

**Reference:** "Printing Multiple Pages on One Page" (p.7)

**1** Click the "Paper" tab in the printer driver setup screen.

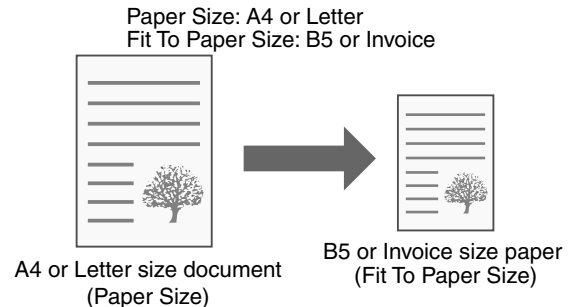
**2** Select the paper size for the print data from "Paper Size".

**3** Check the "Fit To Page" box.



**4** Select the paper size for "Fit To Paper Size", which corresponds to the size of paper in the unit.

Now, the printed image will automatically fit the paper set in the unit.





# 1 Printing Multiple Pages on One Page

This feature allows you to print two or four document pages onto a single page.

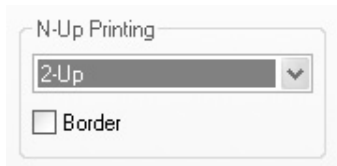
To use this function, open the printer driver setup screen, select "2-Up" or "4-Up" for "N-Up Printing" on the "Main" tab.



**Note**

*The "N-Up Printing" setting is not available when "Fit To Paper Size" is selected.*

**Reference:** "Fitting the Printed Image to the Paper" (p.6)



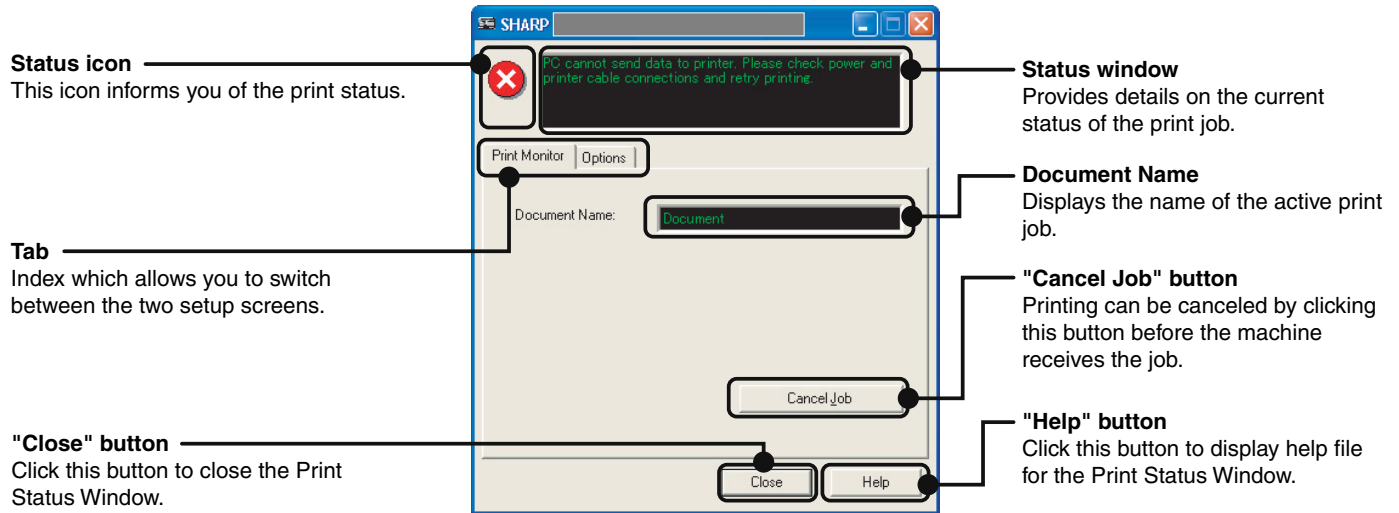
N-Up	<input type="checkbox"/> Border	<input checked="" type="checkbox"/> Border
"2-Up"		
"4-Up"		

If you select the "Border" checkbox, border lines will be printed on each page.

# 1 Outline of the Print Status Window

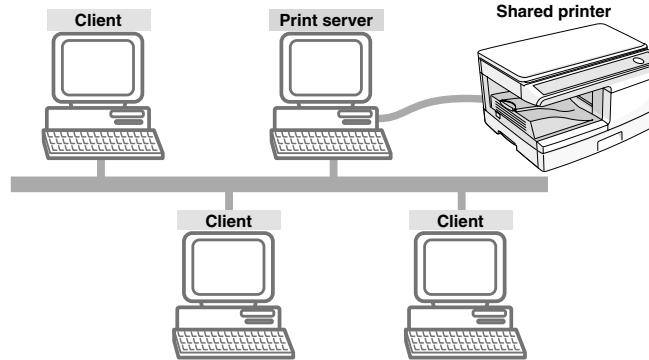
When printing begins, the Print Status Window activates and appears on the screen.

The Print Status Window is a program designed to show the current printer status including the document name being printed and error messages.



## 2 Sharing the Printer Using Windows

The machine can be used as a shared printer in a Windows 98/Me/2000/XP/Vista network environment. Note that the Windows network environment must already be established.



"Print server" as explained here is a computer that is directly connected to the machine, and a "Client" is any other computer that is connected to the same network.

**Reference:** "Shared Printer Settings" (p.10)  
(On the print server)

**Reference:** "Client Settings" (p.11)

## 2 Shared Printer Settings

### On the computer to which the machine is directly connected

Follow the steps below to use the computer directly connected to the machine as a print server.

If your operating system is Windows 98/Me, start from step 1. If your operating system is Windows 2000, XP Home Edition or Vista, open the control panel and then start from step 6.



**Note**

*If your operating system is Windows XP Professional, refer to the Operation Manual or the help file of your operating system.*

**1** Click the "Start" button, select "Settings", and then click "Control Panel".

**2** Double-click the "Network" icon (🌐).



**Note**

*If the "Network" icon does not appear in Windows Me, click "view all Control Panel options".*

**3** Click the "File and Print Sharing" button.

**4** Enable "I want to be able to allow others to print to my printer(s)." by clicking the checkbox, and then click the "OK" button.

**5** Click the "OK" button in the "Network" dialog box.



**Note**

*If a message appears asking you to restart the computer, click the "Yes" button and restart the computer. Then, open the printer folder and continue the setup procedures from Step 6.*

**6** Click "Printers and Other Hardware" in the control panel, and click "Printers and Faxes".

- On Windows Vista, click "Printer".
- In operating systems other than Windows XP, double-click the printer icon.


**7** Click the "SHARP AR-XXXX" printer driver icon and select "Sharing" from the "File" menu.

On Windows Vista, click "Share" from the tool bar.

**8** Establish the settings for sharing, and click the "OK" button.



**Note**

*For information on a setting, click the  button at the top-right of the dialog box and then click the setting to display Help.*

**Reference:** "Client Settings" (p.11)

## 2 Client Settings (part 1)

Follow the procedure below to install the printer driver in the client.



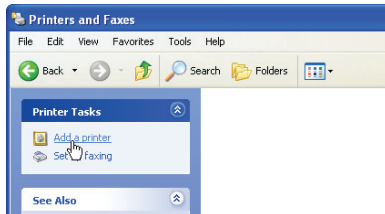
Note

*This page provides steps for Windows XP Home Edition users only. If your operating system is Windows 98/Me/2000/XP Professional/Vista, refer to the Operation Manual or the help file of your operating system.*

**1** Click the "start" button, and click "Control Panel".

**2** Click "Printers and Other Hardware", and click "Printers and Faxes".

**3** Click "Add a printer" in "Printer Tasks". The "Add Printer Wizard" will appear.

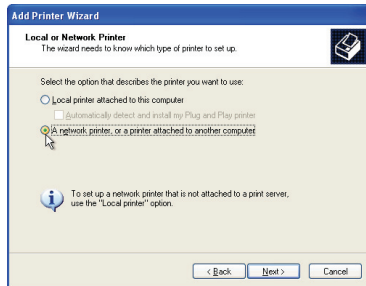


**4** Click the "Next" button.

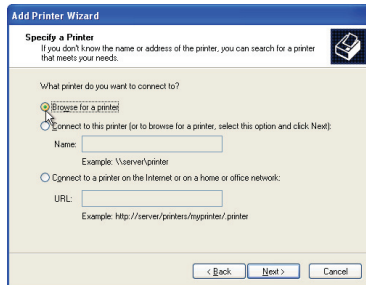


## 2 Client Settings (part 2)

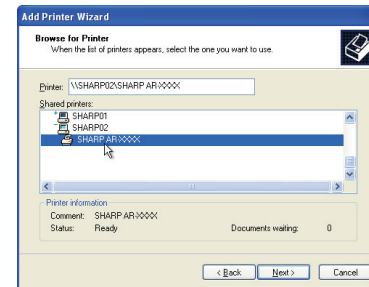
- 5 Select "A network printer, or a printer attached to another computer", and click the "Next" button.



- 6 Select "Browse for a printer", and click the "Next" button.



- 7 Select the printer to be shared in the network, and click the "Next" button.



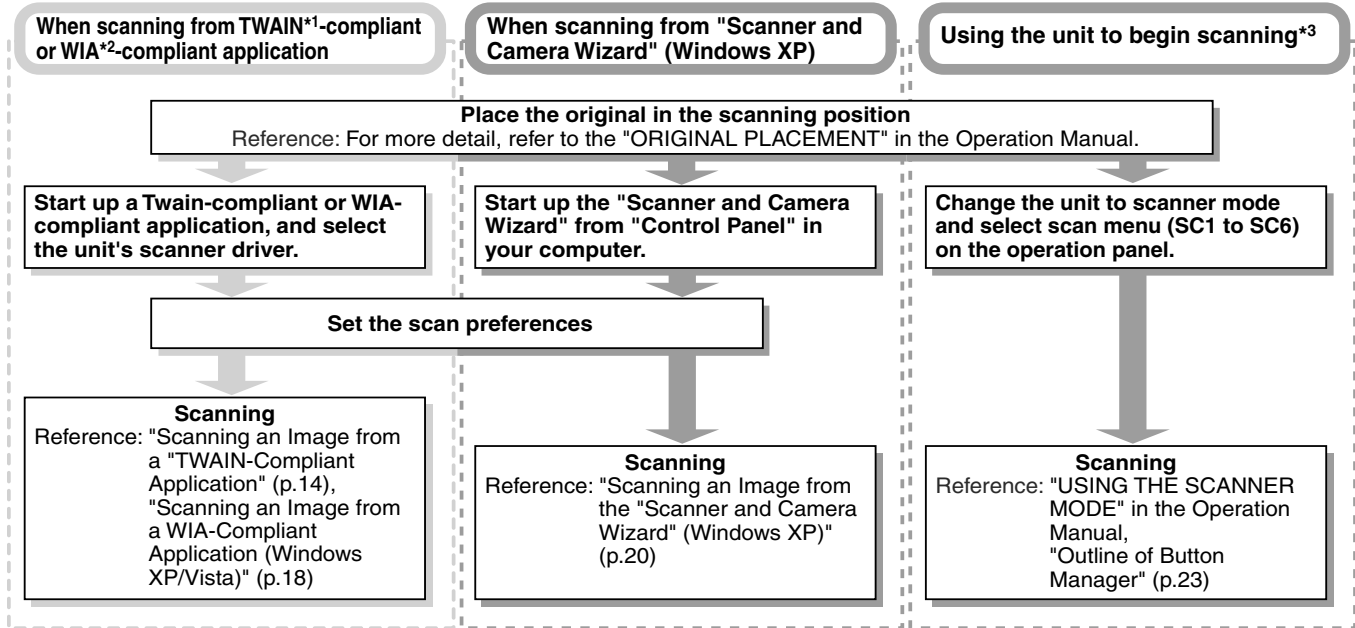
The contents of this window will vary depending on your network environment.

- 8 Select settings in the "Default Printer" screen, and click the "Next" button.

- 9 Click the "Finish" button.

# 3 Scanning Overview

The flow chart shown below provides scanning overview.



\*1: TWAIN is an industry standard for interface of image data processing devices including scanners. By installing a TWAIN driver onto your computer, you can scan and work with images using a variety of TWAIN-compliant applications.

\*2: WIA (Windows Imaging Acquisition) is a Windows function that allows a scanner, digital camera or other imaging device to communicate with an image processing application. The WIA driver for this unit can only be used in Windows XP/Vista.

\*3: To scan using the unit's operation panel, you must first install Button Manager and establish the appropriate settings in the Control Panel. For details, see "USING THE SCANNER MODE" in the Operation Manual. Note that not all scanner functions are available using Button Manager.

### 3 Scanning an Image from a TWAIN-Compliant Application (part 1)

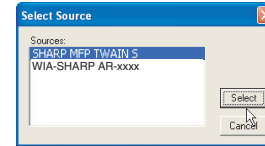
The SHARP scanner driver conforms to TWAIN, the industry standard, making it compatible with a variety of TWAIN-compliant applications.

**1** Place the original (s) you wish to scan on the document glass/SPF.

**Reference:** For information on setting an original for scanning, refer to "ORIGINAL PLACEMENT" in the Operation Manual.

**2** After starting TWAIN-compliant application, click the "File" menu and select "Select Scanner".

**3** Select "SHARP MFP TWAIN S", and click the "Select" button.



**Note**

- If you are using Windows XP/Vista, you can also select "WIA-SHARP AR-xxxx" to scan using the WIA driver.  
**Reference:** "Scanning an Image from a WIA-Compliant Application (Windows XP/ Vista)" (p.18)
- Depending on your system, "SHARP MFP TWAIN S 1.0 (32-32)" and "WIA-SHARP AR-xxxx 1.0 (32-32)" may appear in the "Select Source" screen.
- The method for accessing the "Select Scanner" option, depends upon the application. For more information, refer to the manual or the help file of your application.

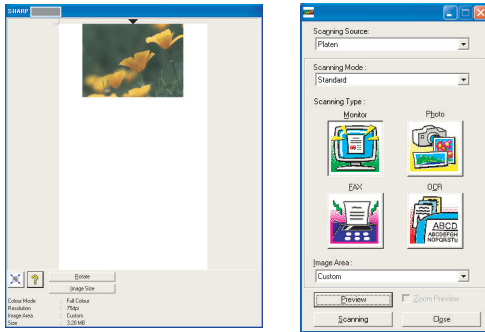


## 3 Scanning an Image from a TWAIN-Compliant Application (part 2)

### 4 Open the scanner driver setup screen.

**Reference:** "Scanner Driver Settings" (p.16)

### 5 In the "Scanning Source" menu, select the position in which you placed the original in Step 1 ("Platen" (document glass) or "SPF"). Select "SPF" when you placed the original in the SPF.



### 6 Click the "Preview" button. The preview image will appear.



#### Note

- If the rotation or angle of the image is different, reset the original, and click the "Preview" button again.
- If you set multiple pages on the SPF, the unit previews only the page placed on the top of the originals, and then sends it to the original exit area. Return the previewed page to the SPF before starting the scanning job.

### 7 Specify the scanning area, and set the scan preferences.

For information on specifying the scan area and setting the scan preferences, see scanner driver Help.

**Reference:** "Scanner Driver Settings" (p.16)



#### Caution

*Setting a large area with full color together with a high resolution setting, makes the data size large, resulting in extended scanning times. It is recommended to set the scanning preferences depending on the type of the original to be scanned, i.e., Web Pages (monitor), Photo, FAX, or OCR.*

### 8 Click the "Scanning" button after setting your preferences.

To cancel your scanning job after clicking the "Scanning" button, press the [Esc] key on your keyboard.

# 3 Scanning an Image from a TWAIN-Compliant Application (part 3)

## Scanner Driver Settings

The scanner driver setup screen consists of the "Set-up screen", which lets you select scan settings, and the "Preview screen", which shows the scanned image. For details on the scan settings, click the "Help" button to display Help.

### Set-up screen

#### "Scanning Source" menu

Select the desired scanning position from "Platen" (document glass) or "SPF".



Note

Select "SPF" when you placed the original in the SPF.

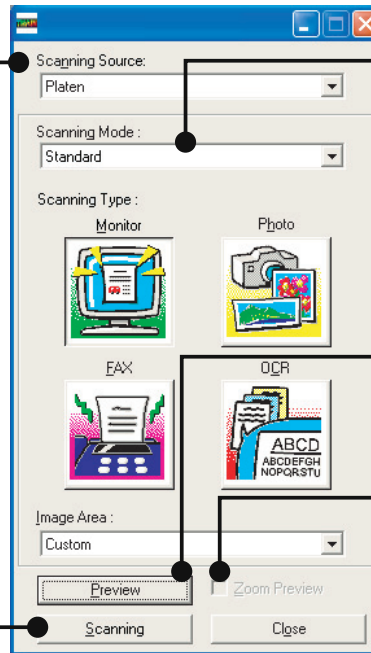
#### "Scanning" button

Click to scan an original or image according to your preferences. Before clicking the "Scanning" button, check if your preferences are set correctly.



Note

To cancel your scanning job after clicking the "Scanning" button, press the [Esc] key on your keyboard or the clear key on the unit.



#### "Scanning Mode" menu

Switch the scanning mode between the "Standard" and "Professional" screen. For details on each of these settings, click the "Help" button to display Help.

#### "Preview" button

Previews the document.



Note

If "Preview" is canceled by immediately pressing the [Esc] key on your keyboard or the clear key on the unit, there may be no images displayed on the preview screen.

#### "Zoom Preview" check box

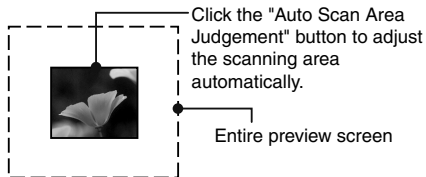
If the [Zoom Preview] checkbox is selected before the [Preview] button is clicked, the selected area will be enlarged in the preview window.

# 3 Scanning an Image from a TWAIN-Compliant Application (part 4)

## Preview screen

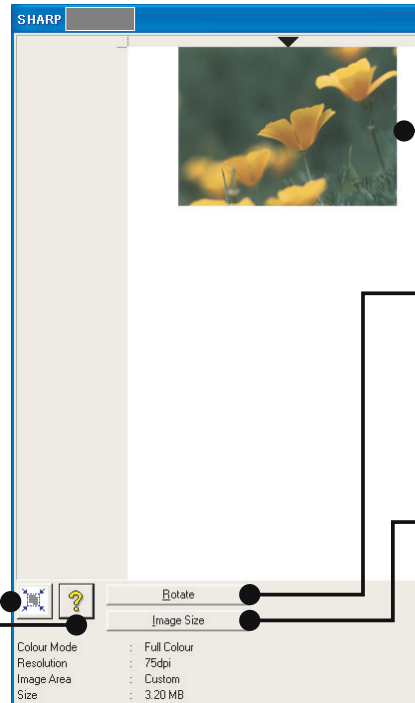
### "Auto Scan Area Judgement" button

Click when the preview screen is displayed to automatically set the scanning area.



### "Help" button

Click to display the help file for the scanner driver.



### Preview window

Click the "Preview" button in the Set-up screen to display the scanned image. You can specify the scanning area by dragging the mouse inside the window.

### "Rotate" button

Each time this button is clicked, the preview image rotates 90 degrees. This lets you change the orientation of the image without picking up and placing the original again. The image file will be created using the orientation that appears in the preview window.

### "Image Size" button

Click to open a dialog box that allows you to specify the scanning area by entering numbers. Pixels, mm, or inches can be selected for the units of the numbers. By initially specifying a scanning area, numbers can be entered to change that area relative to the top left corner as a fixed origin.

### 3 Scanning an Image from a WIA-Compliant Application (Windows XP/Vista) (part 1)

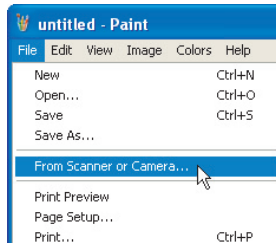
If you are using Windows XP/Vista, you can use the WIA driver to scan from Paint and other WIA-compliant applications. The procedure for scanning using Paint is explained in the following.

#### 1 Place the original you wish to scan on the document glass/SPF.

**Reference:** For information on setting an original for scanning, refer to "ORIGINAL PLACEMENT" in the Operation Manual.

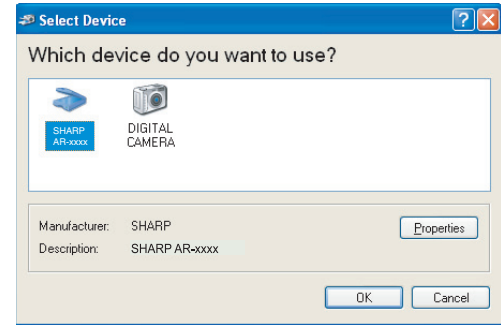
#### 2 After starting Paint, click the "File" menu and select "From Scanner or Camera".

The scan screen of the WIA driver will appear.



**Note**

*If you have WIA drivers for other devices installed in your computer, the "Select Device" screen will open. Select "SHARP AR-xxxx" and click the "OK" button.*



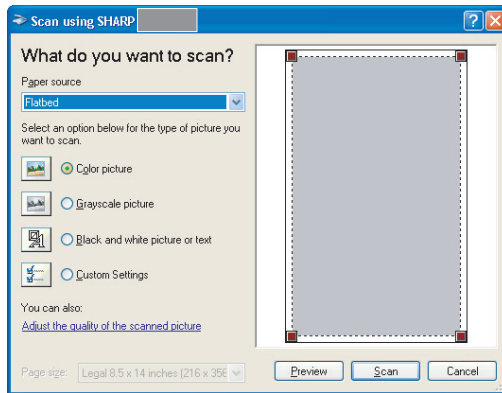
## 3 Scanning an Image from a WIA-Compliant Application (Windows XP/Vista) (part 2)

### 3 Select the paper source and picture type, and click the "Preview" button.

The preview image will appear.

If you placed the original on the document glass, select "Flatbed" for the "Paper source".

If you placed the original in the SPF, select "Document Feeder" for the "Paper source" and specify the original size in "Page size".



#### Note

- If you select "Document Feeder" for the "Paper source" and click the "Preview" button, the top original in the SPF is previewed. The previewed original is sent to the original exit area and the following original stops in the SPF. To eject the original, press "C (clear)" key and return those ejected originals to the SPF before starting the scanning job.
- To view Help for a setting, click the (?) button in the upper right-hand corner of the window and then click the setting.

### 4 Click the "Scan" button.

Scanning begins and the image is acquired into Paint. Use "Save" in your application to select a file name and folder for the scanned image, and save the image. To cancel your scanning job after clicking the "Scan" button, click the "Cancel" button.

### 3 Scanning an Image from the "Scanner and Camera Wizard" (Windows XP) (part 1)

The procedure for scanning with the "Scanner and Camera Wizard" in Windows XP is explained here. The "Scanner and Camera Wizard" lets you scan an image without using a WIA-compliant application.

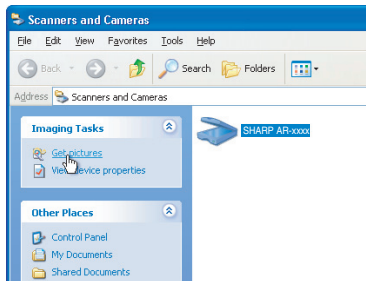
- 1 Place the original you wish to scan on the document glass/SPF.

**Reference:** For information on setting an original for scanning, refer to "ORIGINAL PLACEMENT" in the Operation Manual.

- 2 Click the "start" button, click "Control Panel", click "Printers and Other Hardware", and then click "Scanners and Cameras".

- 3 Click the "SHARP AR-xxxx" icon and then click "Get pictures" in "Imaging Tasks".

The "Scanner and Camera Wizard" will appear.



- 4 Click the "Next" button.



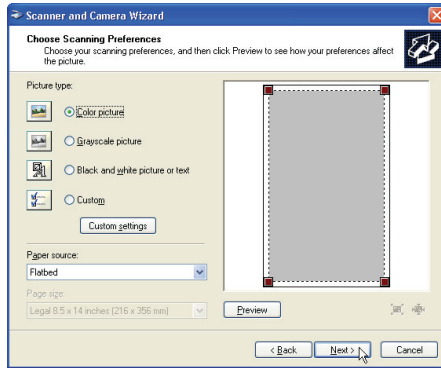
## 3 Scanning an Image from the "Scanner and Camera Wizard" (Windows XP) (part 2)

### 5 Select the "Picture type" and "Paper source", and click the "Next" button.

If you placed the original on the document glass, select "Flatbed" for the "Paper source".

If you placed the original in the SPF, select "Document Feeder" for the "Paper source" and specify the original size in "Page size".

You can click the "Preview" button to display the preview image.

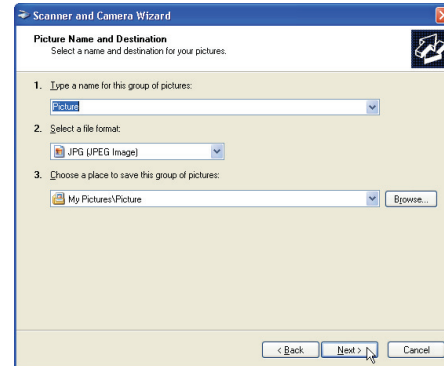


#### Note

- If you select "Document Feeder" for the "Paper source" and click the "Preview" button, the top original in the SPF is previewed. The previewed original is sent to the original exit area, so you will need to return it to the SPF before starting the scanning job.
- To adjust the resolution, picture type, brightness and contrast settings, click the "Custom settings" button.

### 6 Specify a group name, format and folder for saving the image, and then click the "Next" button.

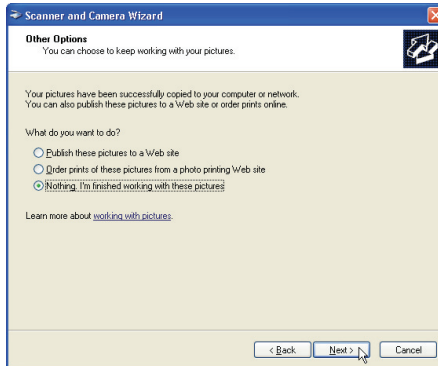
JPG, BMP, TIF or PNG can be selected for the format. To begin scanning, click the "Next" button.



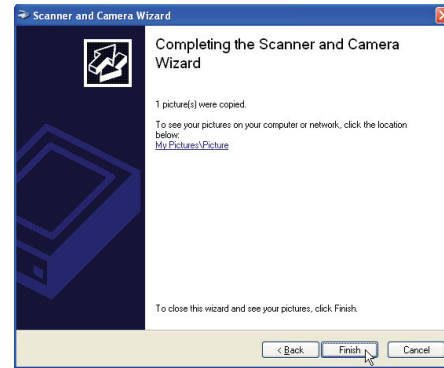
## 3 Scanning an Image from the "Scanner and Camera Wizard" (Windows XP) (part 3)

- 7** When scanning ends, the following screen will appear. Select the next task you wish to perform, and then click the "Next" button.

If you are ready to end the session, click "Nothing. I'm finished working with these pictures".



- 8** Click the "Finish" button. The "Scanner and Camera Wizard" closes and the scanned image is saved in the specified folder.





# 3 Outline of Button Manager


Button Manager is a utility software to link scanning functions to the SCAN key on the unit. This software enables you to set scanning functions to six different scan menus, which will be linked to the SCAN key on the unit.

**Reference:** To begin scanning using the unit's operation panel, settings must be established in the Control Panel after the Button Manager is installed. For information on installing the Button Manager, establishing the Control Panel settings, and scanning using the unit's operation panel, see "USING THE SCANNER MODE" in the Operation Manual.

The functions of Button Manager are shown below.

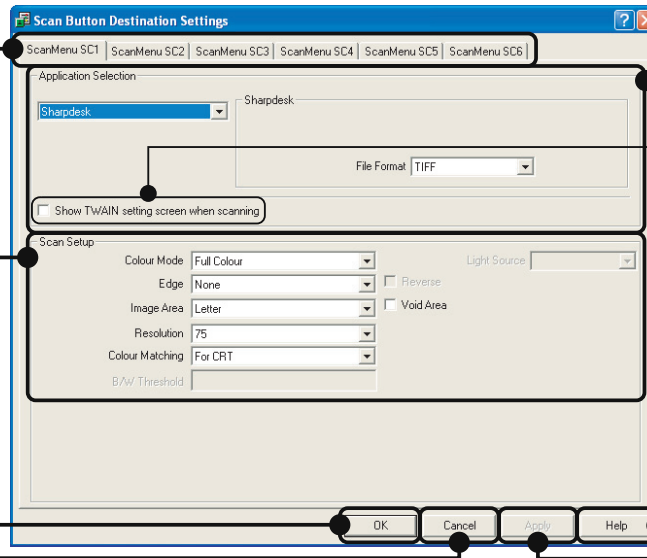
**Tab**  
Click to set scan menu options.

**"Scan Setup" area**  
Set the scan conditions.

 **Note**  
Some applications may limit your choice of settings.

**"OK" button**  
Click to save your settings, and exit the dialog box.

**"Cancel" button**  
Click this button to exit the dialog box without making any changes to the settings.




**"Application Selection" area**  
Select the start-up application here.

**Show TWAIN setting screen when scanning**  
You can select whether or not the TWAIN screen is shown. When the checkbox is selected, the TWAIN screen appears when scanning is executed to let you adjust the scanning conditions.

**"Help" button**  
Click this button to display the help file for Button Manager.

**"Apply" button**  
Click to save your settings without closing the dialog box.

You can specify and change your six scan menu options from five functions. Refer to "Button Manager Settings" (p.24) to specify and change the scan menu options.

 **Note**  
Close the source application before using the SCAN key on the unit.

# 3 Button Manager Settings

After being installed, Button Manager normally keeps active under the Windows operating system. Follow the steps shown below to set scan options as you like.

For details on the settings in the setting screen of Button Manager, see Button Manager Help.

- 1 Right-click the Button Manager icon (  ) on the task bar.**



**Note**

*If the Button Manager icon does not appear on the task bar, click the "start" button, select "All Programs" ("Programs" on Windows 98/Me/2000), select "SHARP Button Manager S", and then click "Button Manager" to start Button Manager.*

- 2 Select "Settings" from the displayed pop-up menu.**  
The setting screen of Button Manager will open.

**Reference:**"Outline of Button Manager" (p.23)

- 3 Click the tab of the scan menu you want to set up.**

ScanMenu SC1 | ScanMenu SC2 | ScanMenu SC3 | ScanMenu SC4 | ScanMenu SC5 | ScanMenu SC6

- 4 Set up the start-up application in the "Application Selection" area.**



**Note**

*When the "Show TWAIN setting screen when scanning" checkbox is selected, the scan setting screen appears when scanning is executed to let you adjust the scanning conditions.*

**Reference:**"Outline of Button Manager" (p.23)

- 5 Set up the "Colour Mode", "Edge" and other scan settings in the "Scan Setup" area.**

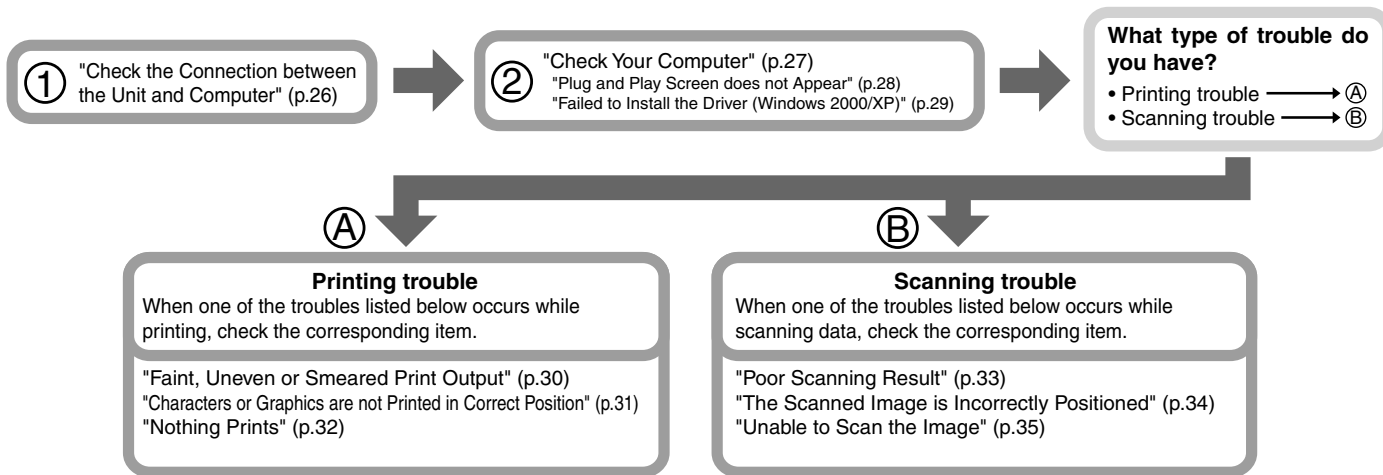
**Reference:**"Outline of Button Manager" (p.23)

- 6 Click the "OK" button.**  
You have completed the settings.

## 4 Identifying Unit Problems

When any trouble has occurred in the unit, first, verify whether you can make a copy or not with the unit. Check the items shown below when the unit does not work properly but it can make a copy.

**Reference:** If any copier trouble occurs, refer to "TROUBLESHOOTING" in the Operation Manual.



**Note**

*Make sure that the unit is not working. You cannot print from your computer or scan from the unit while the unit is making copies.*

If you fail to solve the problem after verifying all the items listed above, please contact your authorised service representative.

## 4 Check the Connection between the Unit and Computer

### **CHECK1 Is the interface cable compatible with the unit and computer?**

Interface cable compatible with this unit is USB cable.

#### **USB cable**

Use a shielded cable.

### **CHECK2 Is the interface cable connected securely?**

Check if the interface cable is securely plugged into the connectors of the unit and computer. It is also advisable to ensure that the connector pins are not bent.

**Reference:** See "INSTALLING THE SOFTWARE" in the Operation Manual for more details on interface connection.

### **CHECK3 Are any other USB peripherals being connected along with the unit?**

If other USB peripherals are connected through the same hub, disconnect them to see if the problem still exists.

### **If the USB cable becomes disconnected**

If the USB cable becomes disconnected, even only once during the unit's operation, then printing and scanning may be disrupted.

If this occurs, check the USB cable and ensure that it is securely connected, then restart the computer.

# 4 Check Your Computer

**Reference:** "Plug and Play Screen does not Appear" (p.28)

## **CHECK1 Is there enough computer memory or hard disk space?**

To use this unit, you must have an adequate amount of hard disk space. If there is insufficient hard disk space, delete unnecessary files to increase the free space of the hard disk. If there is insufficient memory, close unnecessary applications to increase memory available for printing or scanning. If you are still unable to print or scan, install more memory into your computer.

## **CHECK2 Is your hard disk fragmented?**

When data is frequently stored/deleted, the hard disk may become fragmented causing a reduction in printing or scanning speed. In this case it is recommended to defragment your hard disk. You may use the Windows tools or a commercially available hard disk defragmenting tool.

# 4 Plug and Play Screen does not Appear

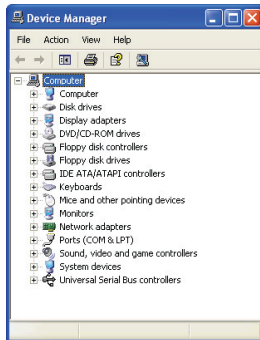
If the Plug and Play screen does not appear after you connect the unit to your computer with a USB cable and turn on the power of both devices, follow the steps below to verify that the USB port is available.

## 1 Click the "start" button, click "Control Panel", and then click "Performance and Maintenance".

- On Windows Vista, click the "start" button, click "Control Panel", and then click "System and Maintenance".
- On Windows 98/Me/2000, click the "Start" button, select "Settings", and then click "Control Panel".

## 2 Click "System", click the "Hardware" tab, and click the "Device Manager" button.

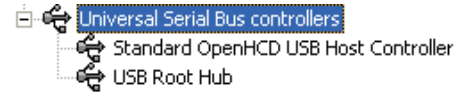
- On Windows Vista, click the "Device Manager", and if a message screen appears asking you for confirmation, click "Continue".
- On Windows 2000, double-click the "System" icon, click the "Hardware" tab, and click the "Device Manager" button.
- On Windows 98/Me, double-click the "System" icon and click the "Device Manager" tab.
- "Universal Serial Bus controllers" will appear in the list of devices.



**Note**

*If the "System" icon does not appear on Windows Me, click "view all Control Panel options" to view it.*

## 3 Click the (+) icon beside the "Universal Serial Bus controllers".



Two items will display, your Controller chipset type and Root Hub. If these items appear, you can use the USB port. If the "Universal Serial Bus controllers" shows a yellow exclamation point or does not appear, you must check your computer manual for USB troubleshooting or contact your computer manufacturer.

## 4 When you make sure that the USB port is enabled, install the software, referring to "INSTALLING THE SOFTWARE" in the Operation Manual.

## 4 Failed to Install the Driver (Windows 2000/XP)

If the driver cannot be installed under Windows 2000/XP, check your computer's settings according to the following procedure.

### 1 Click the "start" button, and then click "Control Panel".

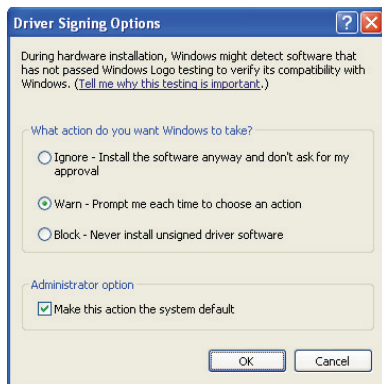
On Windows 2000, click the "Start" button, select "Settings", and then click "Control Panel".

### 2 Click "Performance and Maintenance", and then click "System".

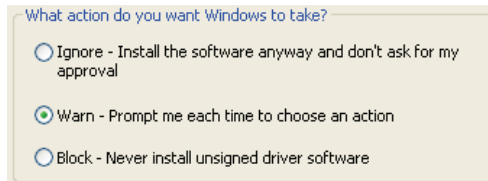
On Windows 2000, double-click the "System" icon.

### 3 Click the "Hardware" tab, and then click the "Driver Signing" button.

The following dialog box will open.



### 4 Check the "What action do you want Windows to take?" ("File signature verification" on Windows 2000).



If the option "Block" has been selected for your computer, then the driver will not be installable. Select the option "Warn" and then install the driver as explained in "INSTALLING THE SOFTWARE" in the Operation Manual.

## 4 Faint, Uneven or Smearred Print Output

If print output is faint, uneven or smeared, follow the steps listed below.

### **CHECK1 Has the printer driver been specified to suit both paper and the print job?**

You can select "Draft", "Normal" or "Photo" for the print quality in the "Advanced" tab of the printer driver setup screen. When "Photo" is selected, you can click the "Image Adjustment" button and adjust the brightness and contrast in the dialog box that appears. Adjust these settings appropriately for your print data and try printing again.

**Reference:** "Printer Driver Settings" (p.4)

### **CHECK2 Is the paper curled?**

If the paper is curled, straighten it up and set it in the unit again.

### **CHECK3 Is the paper too thick or too thin?**

Only paper weighing from 56 g/m<sup>2</sup> to 80 g/m<sup>2</sup> (15 lbs. to 21 lbs.) can be used in the paper tray.

Only paper weighing from 56 g/m<sup>2</sup> to 128 g/m<sup>2</sup> (15 lbs. to 34.5 lbs.) can be used in the multi-bypass tray.

### **CHECK4 Is the developer replacement required indicator lit?**

When the developer replacement required (⦿) indicator lights up, the developer should be replaced. DEVELOPER REPLACEMENT SHOULD ONLY BE DONE BY AN AUTHORISED SHARP SERVICE TECHNICIAN. Contact your authorised service representative as soon as possible.

### **CHECK5 Is it near time to replace the toner cartridge?**

When it is near time to replace the toner cartridge, the toner cartridge replacement required (⦿) indicator will light up on the unit operation panel. When it is time to replace the cartridge, the indicator will blink. Replace the cartridge and try printing again.

**Reference:** See "TONER CARTRIDGE REPLACEMENT", in the Operation Manual.

### **CHECK6 Is the maintenance indicator lit?**

When the maintenance (⦿) indicator lights up, service by an authorised SHARP service technician is required. Contact your authorised service representative as soon as possible.

### **CHECK7 Did you set sufficient margins in the paper settings of your application?**

If the margins are set outside of the quality guaranteed area, smudges or smears may appear at the upper and lower edges of the paper. When selecting the paper settings in the application, set the margins from the top, bottom, left and right edges of the paper to 4 mm (5/32").



## 4 Characters or Graphics are not Printed in Correct Position

If a document is printed skewed or partly off the paper, follow the steps listed below.

### **CHECK1 Is the paper size loaded in the tray the same as that specified in the printer driver?**

Check if the "Paper Size" options suit the size of the paper loaded in the tray.

If the "Fit To Page" setting is activated, make sure that the paper size selected from the drop-down list of the "Fit To Paper Size" option is the same as the size of the loaded paper.

### **CHECK2 Is the orientation of document setting correct?**

Click the "Paper" tab in the printer driver setup screen, and verify if the "Image Orientation" option is set to your requirements.

### **CHECK3 Is the paper loaded correctly?**

If a document is physically damaged when it is output or the image is skewed on the paper, discard the damaged sheet, reinsert the paper supply and print again. Insert the paper so that there is no visible space between the paper and the paper guides.

**Reference:** See "LOADING PAPER" in the Operation Manual for more details on inserting paper.

### **CHECK4 Did you correctly specify the margins for the application in use?**

Check the layout of the document margins and the paper size settings for the application you are using. Also check if the print settings are specified correctly to suit the paper size.

**Reference:** "Faint, Uneven or Smearred Print Output" (p.30)

## 4 Nothing Prints

If nothing prints even when the unit is turned on, please wait a few moments. The unit needs a longer time to process intricate data. If the unit still does not print, refer to the check list below.

### CHECK1 Has a paper jam occurred?

When the misfeed (⊘) indicator blinks or ( ) blinks in the display, the unit will stop because of a misfeed.

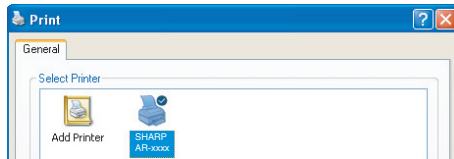
Remove the jammed paper as explained in "MISFEED REMOVAL" in the Operation Manual.

### CHECK2 Is the ON LINE indicator off?

The ON LINE indicator on the operation panel turns off while the unit is used for copying. Scanning and printing is not possible at this time. When copying is finished, the ON LINE indicator will turn on after the set auto clear time elapses, and the unit will be ready for scanning and printing. You can also press the clear key twice or press the ON LINE key to make the unit ready for scanning or printing.

### CHECK3 Is your unit selected correctly in the current application for the print job?

When choosing "Print" from the "File" menu located in applications, be sure you have selected "SHARP AR-xxxx" printer displayed in the "Print" dialog box.



## 4 Poor Scanning Result

If you get poor quality as a result of scanning a job, and you cannot improve the quality by changing preferences, refer to the check list shown below.

### **CHECK1 Is the original clean?**

Check your original before scanning. If any dust sticks to the original, you cannot obtain a clean result. In addition, make sure that the document glass is also clean.

### **CHECK2 Have you specified a suitable resolution?**

Make sure that the value for the "Resolution" setting in the scanner driver satisfies the requirement of the set original.

**Reference:** "Scanning an Image from a TWAIN-Compliant Application" (p.16),  
"Scanning an Image from a WIA-Compliant Application (Windows XP/Vista)" (p.19),  
"Scanning an Image from the "Scanner and Camera Wizard" (Windows XP)" (p.21),

### **CHECK3 Have you specified a suitable value for the "B/W Threshold" setting?**

If you are scanning with a TWAIN-compliant application and are using "Mono 2 gradation (no Green)", "Mono 2 gradation (no Red)" or "Mono 2 gradation (no Blue)" mode, make sure that a suitable value is specified for the "B/W Threshold" setting. A larger threshold value makes your output darker, whilst a small threshold value makes it lighter. To adjust the threshold automatically, click the "Auto Threshold" button on the "Image" tab of the "Professional" screen.

**Reference:** "Scanning an Image from a TWAIN-Compliant Application" (p.16)

### **CHECK4 Have you adjusted the brightness and contrast suitably?**

If you are scanning with a TWAIN-compliant application and the resulting image has unsuitable brightness or contrast (for example it is too bright), activate the "Auto Brightness/Contrast Adjustment" setting on the "Colour" tab of the "Professional" screen (p.16).

If you are scanning with a WIA-compliant application or the "Scanner and Camera Wizard", click "Adjust the quality of the scanned picture" (p.19) or the "Custom settings" button (p.21), and adjust the brightness and contrast in the screen that appears.

## 4 The Scanned Image is Incorrectly Positioned

If the scanned image is incorrectly positioned, refer to the check list shown below.

### CHECK1 Have you placed the original straight?

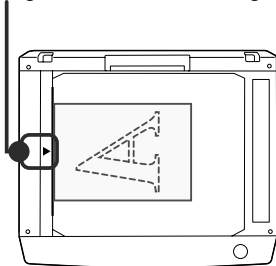
Place the original straight on the document glass.

**Reference:** Refer to "ORIGINAL PLACEMENT" in the Operation Manual for the detail on how to set the original.

### CHECK2 Have you set the original correctly on the document glass?

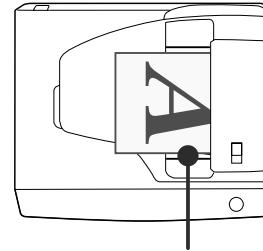
Place the original on the document glass in the direction as shown in the illustration below.

Align the center of the original with (▶) mark.



### CHECK3 Have you set the original correctly on the SPF?

To scan from the SPF, align the guide to the original as shown in the illustration below.



Align the guide to the original.

## 4 Unable to Scan the Image

If you cannot scan the image, turn off your computer. Press the power switch on the unit to turn it off, unplug the unit from the power source, and then plug it back in. Restart your computer. Try scanning again. If scanning is still not possible, refer to the check list below.

### **CHECK1 Is your application compliant to TWAIN?**

If you are using Windows 98/Me/2000 and your application is not TWAIN compliant, the application cannot acquire images. Use an application that is TWAIN compliant.

### **CHECK2 Have you selected the scanner driver of this unit on your application?**

Make sure that the "SHARP MFP TWAIN S" or "WIA-SHARP AR-xxxx" is selected on your application.

**Reference:** "Scanning an Image from a TWAIN-Compliant Application" (p.14)

### **CHECK3 Have you specified all scanning preferences appropriately?**

Setting a large area with full color together with a high resolution setting, makes the data size large, resulting in extended scanning times. It is recommended to set the scanning preferences depending on the type of original to be scanned, i.e., Web Pages (monitor), Photo, FAX, or OCR.

### **CHECK4 Is there enough computer memory?**

Your computer may not have enough available memory to hold the document you want to scan. Lower the scan resolution.

### **CHECK5 Has the specified period of program timeout already elapsed?**

Neither printing nor scanning jobs can be sent to the unit from your computer during the specified period of program timeout after copying.

To send a scanning job immediately, press the clear key twice, ONLINE key or SCAN key on the unit.

**Reference:** For more detail, refer to "USER PROGRAMS" in the Operation Manual.

### **CHECK6 Are you trying to scan multiple originals in the SPF at once?**

When multiple originals are loaded in the SPF, it depends on your application whether only one original can be scanned in a single operation, or whether multiple originals can be scanned. Check which is possible in your application.

### **CHECK7 Does your computer's operating system support the scanner driver?**

The operating systems that support the unit's scanner driver are Windows 98/Me/2000/XP/Vista.

## 5 Printer Driver Features (part 1)

Tab	Setting	Selections	Initial setting	
<b>Main</b>	Copies	1 to 999	1	
	Collate	On/Off	On	
	N-Up Printing	1-Up/2-Up/4-Up	1-Up	
	Border	On/Off	Off	
	User Settings	-	Factory Defaults	
	<b>[User Settings]</b>			
	Setting Name	Up to seven names, 20 characters each	-	
<b>Paper</b>	Paper Size	A3 [Fit To Page]* <sup>1</sup> , A4, A5, A6, B4 [Fit To Page]* <sup>1</sup> , B5, Ledger [Fit To Page]* <sup>1</sup> , Letter, Legal, Executive, Invoice, Foolsap, Folio, COM10, Monarch, DL, C5, 8K [Fit To Page]* <sup>1</sup> , 16K, Custom Paper	A4* <sup>2</sup>	
	Fit To Page	On/Off	Off	
	Image Orientation	Portrait/Landscape/Rotate 180 degrees	Portrait	
	Paper Source	Tray 1, Tray 2 (Peripheral device), Bypass Tray	Tray 1	
	<b>[Custom]</b>			
	Width	98.3 to 215.9 (mm.)/3.87 to 8.50 (in.)	98.3 (mm.)* <sup>2</sup>	
	Length	148.0 to 355.6 (mm.)/5.83 to 14.00 (in.)	148.0 (mm.)* <sup>2</sup>	
	Size	millimeters/inch	millimeters* <sup>2</sup>	

(continued)

\*1: Will be reduced to A4 (Letter) size or the specified size before printing.

\*2: This initial setting may vary depending on your operating system settings.

For information on each setting, see Help in the printer driver setup screen.

## 5 Printer Driver Features (part 2)

Tab	Setting	Selections	Initial setting
Advanced	Print Quality	Draft/Normal/Photo	Normal
	2 Gradation Print	On/Off	Off
	<b>[Image Adjustment]</b>		
	Brightness	0 to 100	50
	Contrast	0 to 100	50
Watermarks	Watermark	(None)/TOP SECRET/CONFIDENTIAL/DRAFT/ORIGINAL/COPY	(None)
	Text	-	-
	Size	6 to 300	200
	Angle	-90 to +90	+45
	Gray Scale	0 to 255	192
	On First Page Only	On/Off	Off

# 6 Index

<b>A</b>	Application Selection	23	<b>O</b>	Outline of Button Manager	23	Scanning Source	15	
	"Auto Scan Area Judgement" button	17		Outline of the Print Status Window	8	Select Device	18	
<b>B</b>	Basic Printing	2		Overview		Set-up Screen	16	
	Border	7		Print	1	Settings		
	Button Manager	23		Scan	13	Button Manager	24	
	Button Manager Settings	24	<b>P</b>	Paper Size	6	Printer driver	4	
<b>F</b>	Fit To Page	6		"Preview" button		Scanner driver		
	Fit To Paper Size	6		Scanner and Camera Wizard	21	Scanner and Camera Wizard	21	
<b>H</b>	Help			TWAIN driver	16	TWAIN driver	16	
	Button Manager	23		WIA driver	19	WIA driver	19	
	Print Status Window	8		Preview Screen	17	Sharing the printer	9	
	Printer driver	4		Print	1	Starting		
	Scanner driver			Print Status Window	8	Button Manager	24	
	TWAIN driver	16		Printer Driver Features	36	Printer driver	3	
	WIA driver	19		Printer Driver Settings	4	<b>T</b>	Troubleshooting	25
<b>I</b>	Interface	26		Printing a Watermark	5		TWAIN	13
<b>M</b>	Margin	30	<b>S</b>	Printing Overview	1	<b>U</b>	Unable to Scan the Image	35
<b>N</b>	N-up printing	7		Scan	13	<b>W</b>	Watermark	5
	Nothing Prints	32		"Scanning" button			WIA	13
				TWAIN driver	16			
				WIA driver	19			
				Scan Setup	23			
				Scanner and Camera Wizard	13			
				Scanning an Image				
				Scanner and Camera Wizard	20			
				TWAIN driver	14			
				WIA driver	18			
				Scanning Mode	16			
				Scanning Overview	13			











This manual has been printed using a vegetable-based soy oil ink to help protect the environment.



PRINTED IN CHINA  
2008E KS1  
TINSE1901QSZZ