

Specific absorption rate (SAR)

This model phone FOMA SH905iTV meets the MIC's* technical regulation for exposure to radio waves.

The technical regulation established permitted levels of radio frequency energy, based on standards that were developed by independent scientific organizations through periodic and thorough evaluation of scientific studies. The regulation employs a unit of measurement known as the Specific Absorption Rate, or SAR. The SAR limit is 2 watts/kilogram (W/kg)** averaged over ten grams of tissue. The limit includes a substantial safety margin designed to assure the safety of all persons, regardless of age and health. The value of the limit is equal to the international guidelines recommended by ICNIRP***.

All phone models should be confirmed to comply with the regulation, before they are available for sale to the public. The highest SAR value for this model phone is 0.435 W/kg. It was taken by the Telecom Engineering Center (TELEC), a Registered Certification Agency on the Radio Law. The test for SAR was conducted in accordance with the MIC testing procedure using standard operating positions with the phone transmitting at its highest permitted power level in all tested frequency bands. While there may be differences between the SAR levels of various phones and at various positions, they all meet the MIC's technical regulation. Although the SAR is determined at the highest certified power level, the actual SAR of the phone during operation can be well below the maximum value.

For further information about SAR, please see the following websites:

World Health Organization (WHO)

<http://www.who.int/peh-emf/>

ICNIRP

<http://www.icnirp.de/>

MIC

<http://www.tele.soumu.go.jp/e/ele/body/index.htm>

TELEC

http://www.telec.or.jp/ENG/Index_e.htm

NTT DoCoMo

<http://www.nttdocomo.co.jp/english/product/>

SHARP Corporation

<http://www.sharp.co.jp/products/menu/phone/cellular/sar/index.html>

* Ministry of Internal Affairs and Communications

** The technical regulation is provided in Article 14-2 of the Ministry Ordinance Regulating Radio Equipment.

*** International Commission on Non-ionizing Radiation Protection

European RF Exposure Information

Your mobile device is a radio transmitter and receiver. It is designed not to exceed the limits for exposure to radio waves recommended by international guidelines. These guidelines were developed by the independent scientific organization ICNIRP and include safety margins designed to assure the protection of all persons, regardless of age and health.

The guidelines use a unit of measurement known as the Specific Absorption Rate, or SAR. The SAR limit for mobile devices is 2 W/kg and the highest SAR value for this device when tested at the ear was 0.399 W/kg*.

As SAR is measured utilizing the devices highest transmitting power the actual SAR of this device while operating is typically below that indicated above. This is due to automatic changes to the power level of the device to ensure it only uses the minimum level required to reach the network. The World Health Organization has stated that present scientific information does not indicate the need for any special precautions for the use of mobile devices. They note that if you want to reduce your exposure then you can do so by limiting the length of calls or using a hands-free device to keep the mobile phone away from the head.

* The tests are carried out in accordance with international guidelines for testing.

Declaration of Conformity

CE 0168

Hereby, Sharp Telecommunications of Europe Ltd, declares that this FOMA SH905TV is in compliance with the essential requirements and other relevant provisions of Directive 1999/5/EC.

A copy of the original declaration of conformity can be found at the following Internet address:
<http://www.sharp.co.jp/k-tai/>

FCC Notice

- This device complies with part 15 of the FCC Rules. Operation is subject to the following two conditions:
(1) This device may not cause harmful interference, and (2) this device must accept any interference received, including interference that may cause undesired operation.
- Changes or modifications not expressly approved by the manufacturer responsible for compliance could void the user's authority to operate the equipment.

FCC RF Exposure Information

Your handset is a radio transmitter and receiver.

It is designed and manufactured not to exceed the emission limits for exposure to radio frequency (RF) energy set by the Federal Communications Commission of the U.S. Government.

The guidelines are based on standards that were developed by independent scientific organisations through periodic and thorough evaluation of scientific studies. The standards include a substantial safety margin designed to assure the safety of all persons, regardless of age and health.

The exposure standard for wireless handsets employs a unit of measurement known as the Specific Absorption Rate, or SAR. The SAR limit set by the FCC is 1.6 W/kg.

The tests are performed in positions and locations (e.g., at the ear and worn on the body) as required by the FCC for each model. The highest SAR value for this model handset when tested for use at the ear is 0.442 W/kg and when worn on the body, as described in this user guide, is 0.411 W/kg.

Body-worn Operation; This device was tested for typical body-worn operations with the back of the handset kept 1.5 cm from the body. To maintain compliance with FCC RF exposure requirements, use accessories that maintain a 1.5 cm separation distance between the user's body and the back of the handset. The use of beltclips, holsters and similar accessories should not contain metallic components in its assembly.

The use of accessories that do not satisfy these requirements may not comply with FCC RF exposure requirements, and should be avoided. The FCC has granted an Equipment Authorization for this model handset with all reported SAR levels evaluated as in compliance with the FCC RF emission guidelines. SAR information on this model handset is on file with the FCC and can be found under the Display Grant section of <http://www.fcc.gov/oet/fccid> after searching on FCC ID APYHRO00064. Additional information on Specific Absorption Rates (SAR) can be found on the Cellular Telecommunications & Internet Association (CTIA) Website at <http://www.phonefacts.net>.

Japan export control regulation/ Export administration regulation

The Japan Export Control Regulation (“Foreign Exchange and International Trade Law” and its related laws) and the Export Administration Regulation are applied to this product and its accessories under certain conditions. To export or reexport this terminal and its accessories, conduct all legally required procedures at your own risk and expense. For details on the procedures, contact the Ministry of Economy, Trade and Industry or the US Department of Commerce.

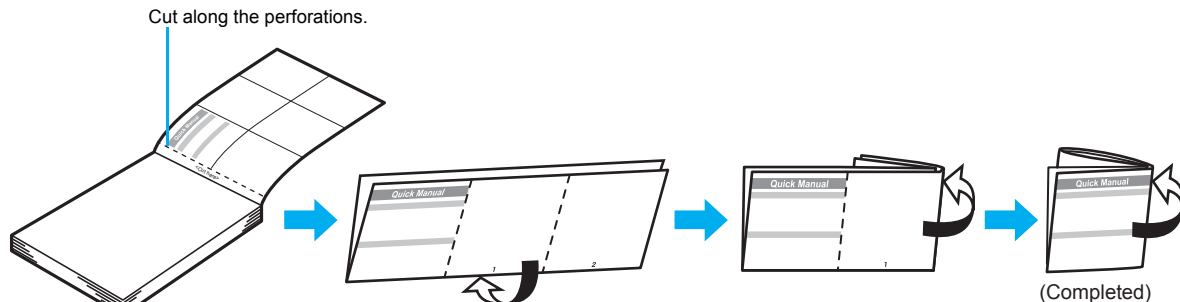
Quick Manual

How to use the Quick Manual

Remove the Quick Manual attached to the end of this manual by cutting along the perforations and fold it as shown below. Carry the Quick Manual "Overseas Use" when the mobile phone is used with International Roaming (WORLD WING) overseas.

Folding the Quick Manual

- Be careful when cutting out the Quick Manual.



This manual is produced using recyclable material. Please recycle when no longer needed.

2 Press **[0]**.

3 Press **[4]** **[5]** **[3]** **[テニス]**.

- Use **[0]** for One-touch conversion.

4 Press **[5]** (five times) **[0]** **[3]**.

- Press **[5]** (five times) for single-byte alphanumeric mode.

5 Press **[5]** (twice) **[0]** **[3]** (twice) **[X]** **[0]** **[時]**.

- Use **[X]** for dakuten mark.

6 Press **[0]** **[時]**.



-6-

Changing font (font style)

1 In the Custom menu, select **[Settings]** **[Disp/LED/Power saver]** **[Font style]** **[Font style setting]** select the font **[0]**.

Changing font size

1 In the Custom menu, select **[Settings]** **[Disp/LED/Power saver]** **[Font style]** **[Font size]** **[Individual setting]** **[Input]** select the font size **[0]** **[Yes]**.

- To change collectively: In stand-by, press **[5]** (for 1+ seconds).

-7-

Camera

Shooting still pictures

1 In stand-by, press **[0]** **[0]** **[0]**.

Shooting panoramas

1 In the still picture shooting screen, press **[0]** **[0]** move the FOMA terminal to either direction of left or right **[0]** **[0]** **[0]**.

Shooting movies

1 In the still picture shooting screen, press **[0]** **[Switch camera-mode]** **[Movie]** **[0]** **[0]** **[0]** **[Save]**.

Displaying still pictures

1 In the Custom menu, select **[Data box]** **[My picture]** select a still picture **[0]**.

-8-

Playing back movies

1 In the Custom menu, select **[Data box]** **[I-motion]** select a movie **[0]**.

Watching 1Seg

Performing the Automatic channel setting

1 In the Custom menu, select **[1Seg]** **[Channel setting]**.

2 Select the number to save **[0]** **[Auto channel set]** **[Yes]**.

3 Select a prefecture/district **[0]** **[0]** **[Yes]**.

Selecting a channel list

1 In the Custom menu, select **[1Seg]** **[Channel setting]** select a channel list **[0]**.

Watching 1Seg

1 Set the FOMA terminal to the Cycloid position.

-9-

Watching videos

1 In the Custom menu, select **[Data box]** **[1Seg]** select a video **[0]**.

Music playback

Using the music player

1 In the Custom menu, select **[Data box]** **[MUSIC]** select music data **[0]**.

Key operations during playback

To pause	[0]
To stop	[0]
To adjust the volume	[0] / [0]

-10-

To play previous song/return to the beginning of song	[0]
To play next song	[0]
To end Music player	[0] / [0] [Yes]

Mail

Composing/Sending i-mode mail

1 In stand-by, press **[0]** (for 1+ seconds) select the **[To]** field **[0]** select the input method.

- Select **[Search phonebook]** select a recipient **[0]**.
- Select **[Direct input]** input a recipient **[0]**.
- Select **[Sent messages]** select a recipient **[0]** **[0]**.



-11-

- Select [Rcvd messages] ▶ select a recipient ▶ Ⓞ ▶ Ⓞ.
 - Select [Mail members] ▶ select a mail member ▶ Ⓞ.
- 2 Select the [Sub] field ▶ Ⓞ ▶ enter a subject ▶ Ⓞ ▶ [Msg] ▶ input text ▶ Ⓞ ▶ Ⓞ.

Sending Deco-mail

- 1 In the text input screen, press Ⓞ ▶ [Decorate mail] ▶ select a decoration type ▶ Ⓞ ▶ specify decoration ▶ Ⓞ ▶ input text ▶ Ⓞ ▶ Ⓞ ▶ Ⓞ.

Attaching a file

- 1 In stand-by, press Ⓞ (for 1+ seconds) ▶ select the attachment field (no attachment) ▶ Ⓞ ▶ select a file to attach.
- Select [Image] ▶ select an image ▶ Ⓞ.
 - Select [Melody] ▶ select a melody ▶ Ⓞ.
 - Select [i-motion] ▶ select an i-motion ▶ Ⓞ.
 - Select [ToruCa] ▶ select a ToruCa ▶ Ⓞ.
 - Select [PDF] ▶ select a PDF ▶ Ⓞ.

-12-

- Select [Phonebook] ▶ select a save destination ▶ Ⓞ ▶ select a name ▶ Ⓞ.
- Select [Schedule] ▶ select a save destination ▶ Ⓞ ▶ (select a day) ▶ Ⓞ ▶ select a schedule ▶ Ⓞ.
- Select [Bookmark] ▶ select a save destination ▶ Ⓞ ▶ select a bookmark ▶ Ⓞ.
- Select [Document] ▶ select a file ▶ Ⓞ.
- Select [Other] ▶ select a file ▶ Ⓞ.
- Select [Start cam (still)] ▶ Ⓞ ▶ Ⓞ.
- Select [Start cam (movie)] ▶ Ⓞ ▶ Ⓞ ▶ [Save].

Composing/Sending SMS

- 1 In stand-by, press Ⓞ ▶ [Compose SMS] ▶ select the [To] field ▶ Ⓞ ▶ [Direct input] ▶ enter an address ▶ Ⓞ ▶ [Msg] ▶ input text ▶ Ⓞ ▶ Ⓞ.

Receiving mail automatically

- 1 Mail is automatically received.
2 Select [Mail] ▶ select mail ▶ Ⓞ.

-13-

Checking for new i-mode messages

- 1 In stand-by, press Ⓞ ▶ [Check new message].
• SMS: Press Ⓞ ▶ [Check new SMS].

Replying to i-mode mail

- 1 In the received mail screen, press Ⓞ ▶ [Reply/Forward].
2 Select the reply method ▶ Ⓞ.
3 Compose/Send mail.

Forwarding i-mode mail

- 1 In the received mail screen, press Ⓞ ▶ [Reply/Forward] ▶ [Forward].
2 Enter an address/Send mail.

-14-

Menu list

Switching between the Custom menu/Basic menu

- 1 In the Custom menu/Basic menu, press Ⓞ.

Recalling a function number

- 1 In the Basic menu, enter a function number.

1 Snd/Vibrator/Manner	
1 Select volume	phone ring vol, Mail ring vol, PushTalk tone vol, Key/Standby i-motion, Charge start sound, Charge end sound, Timer sound
2 Select sound	Select ring tone, Select mail tone, PushTalk tone, Shutter sound, Timer sound
3 Vibrator	Vibration mode, Mail vibration
4 Manner mode	ON (Normal, Silent, Original), OFF
5 Headset setting	

-15-

1 Snd/Vibrator/Manner

6 Ring time setting	Mail ring time set, PT ring time set
7 Set mute ring time	
8 Hold/On hold tone	Set on hold tone, Set hold tone
9 Sound plybck	Melody stereo fx, Melody equalizer, Run music settings

2 Disp/LED/Power saver

1 Set screen	Stand-by display, Clock display, Calendar display, Desktop clock, Sub Caller ID disp, Sub) Clock display
2 Font style	Font style setting, Font size
3 Themes	Kisekae Tool, Call/Rcv display, Send/Rcv display, Submenu image, Dial image set, Animate notices, Signal/batt/s clock, Color theme setting

-16-

2 Disp/LED/Power saver

4 LED settings	Called LED, Mail LED, In-call LED, Alarm/Timer LED, IC card LED, open-clos/rotatLED, Notice LED
5 Display img quality	Vibrant image mode, Control by scene
6 Light/Power saver	Norm (auto bright), Norm (fixed bright), Eco mode (Pwr saver), Original Eco mode
7 Private filter	Linked manner, Filter density
8 Menu priority	

-17-

③ General settings	
① Check status	Owner Information, Check memory, Battery level, Check settings
② Text input setting	User dictionary, Dwnld dictionary, Edit phrase, Clear memory terms
③ Auto power ON/OFF	Auto power ON, Auto power OFF, Link alarm/power ON
④ Date settings	
⑤ Select language	
⑥ TOUCH CRUISER set	Usage settings, Pointer speed, Scroll speed, Double tap speed
⑦ USB mode setting	
⑧ Scanning function	Update, Set auto-update, Set scan, Version
⑨ Software update	
⑩ Reset settings	

-18-

④ NW Services	
① Voice Mail	Check messages, Play Messages, Activate VoiceMail, Set ring time, Deactivate VoiceMail, Status(Voice Mail), Voice Mail setting, Notification setting, Notification
② Call waiting	Activate, Deactivate, Status request
③ Call forwarding	Activate, Deactivate, Register number, Forwarding No. busy, Status request
④ Bar nuisance calls	Register caller, Register selected No, Delete all entries, Delete last entry, Check No of entries
⑤ Notify caller ID	Status request, Notify caller ID
⑥ Caller ID request	Activate, Deactivate, Status request
⑦ Talk time/cost	
⑧ 2in1 setting	Mode switching, Phonebook 2in1 set, Stand-by display, Set call/receive No., 2in1 function OFF, Receive avoidance

-19-

④ NW Services	
⑨ In-call arrival act	Set arrival act, Arrival Call Act

⑤ Other NW Services	
① Remote control	Activate, Deactivate, Status request
② Dual network	Switching, Status request
③ English guidance	Guidance setting, Status request
④ Service number	ドコモ故障問合せ, ドコモ総合案内・受付
⑤ Additional service	USSD, Reply message
⑥ Multi number	Set multi number, Status request, Number setting
⑦ Chaku-moji	Create message, Message display
⑧ Roaming guidance	Activate, Deactivate, Status request

-20-

⑥ Phone settings	
① In-call settings	Noise reduction, Reconnect signal, Quality alarm
② Headset sw to call	
③ Incoming settings	Any key answer, Auto answer setting, Melody Call setting, Rotation-link repl
④ Videophone set	Redial voice call, Set sending image, Display setting, Subscreen position, Visual preference, Notify switch mode, Hands-free V.phone, V-phone while packet
⑤ Record message	Record message, Answering duration, Reply message, V.phone reply image
⑥ Set PushTalk	Set PT arrival act, Hands-free PT
⑦ Set when folded	Phone/Videophone, PushTalk
⑧ Self mode	
⑨ Other settings	Int'l prefix, Sub address, Int'l dial assist, International Roam., In-area status

-21-

⑦ Security	
① Secret mode	
② UIM Settings	PIN1 code input set, Change PIN1 code, Change PIN2 code
③ Accept/Reject calls	Accept calls, Reject calls, Reject unknown, User unset, Reject payphone, Reject not support
④ Show call/ received	Show rcvd calls, Show redial
⑤ Show sent/ received	Show sent messages, Show rcvd messages
⑥ Lock settings	All lock, Keypad dial lock, Function lock, IC card lock, Multi easy lock set, Multi lock auto-set
⑦ Change security code	
⑧ Writing authentic	
⑨ Delete all data	Delete user data, Del secret data

-22-

Other settings	
⑧ Initial setting	
⑩ Own number	

⑨ ① Data box	
① My picture	
② MUSIC	
③ Music&Video ch	
④ i-motion	
⑤ 1Seg	
⑥ Melody	
⑦ My Documents	
⑧ Kisekai Tool	
⑨ Machi-chara	
⑩ Chara-den	
ⓧ Print setting(DPOF)	

-23-

LifeKit	
1 Bar code reader	
2 Receive Ir data	
3 microSD manager	View microSD data, Backup/restore, Import, New manager info, Format, USB mode setting
4 Card reader	
5 Schedule	
6 Calculator	
7 Text memo	
8 Timer/Alarm	Timer, Alarm, Wakeup TV
9 Voice memo/Rec msg	
0 Character reader	
X Data Sec. Service	

-24-

Register Shortcut menu	(for 1+ seconds) when appears
Side Key Guard Set/Disable	(for 1+ seconds)
Private filter ON/OFF	(for 1+ seconds)

-27-

Media tool
1 Voice recorder
2 Manga&BookReader
3 Document Viewer
4 PDF Viewer

-25-

Network services

※ In the confirmation screen, select [Yes].

Voice Mail Service

Voice Mail Service is a paid option (monthly fees apply) that requires subscription.

1 In the Custom menu, select [Settings] ▶ [NW Services] ▶ [Voice Mail].

2 Select [Activate VoiceMail] ▶ [Activate VoiceMail].

- To deactivate: Select [Deactivate VoiceMail].
- To play messages: Select [Play Messages].
- To check messages: Select [Check messages].

-28-

Other menus
4 MUSIC
5 Osaifu-Keitai
6 1Seg

Other functions

Manner mode enable/disable	(for 1+ seconds)
Public mode (Drive mode) activate/deactivate	(for 1+ seconds)
Multi easy lock activate/deactivate	(for 1+ seconds)
Show i-Channel list	(ch)
Show Active marker	
Show i-mode menu	
Show i-appli software list screen	(PL) (for 1+ seconds)
Display Data box menu	(for 1+ seconds)
Supportbook	
Activate Multi Assistant (Multitask)	while using a function
Display Shortcut menu	

-26-

Call Waiting

Call Waiting is a paid option (monthly fees apply) that requires subscription.

1 In the Custom menu, select [Settings] ▶ [NW Services] ▶ [Call waiting].

2 Select [Activate].

- To deactivate: Select [Deactivate].
- To check settings: Select [Status request].

Call Forwarding Service

Call Forwarding Service is a free option (no monthly fees) that requires subscription.

1 In the Custom menu, select [Settings] ▶ [NW Services] ▶ [Call forwarding].

2 Select [Activate] ▶ [Activate].

- To deactivate: Select [Deactivate].
- To check settings: Select [Status request].

-29-

Caller ID request service

Subscription is not required (no monthly fees).

1 In the Custom menu, select [Settings] ▶ [NW Services] ▶ [Caller ID request].

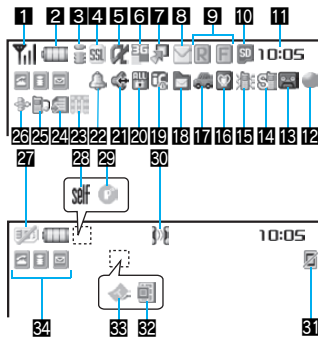
2 Select [Activate].

- To deactivate: Select [Deactivate].
- To check settings: Select [Status request].

-30-

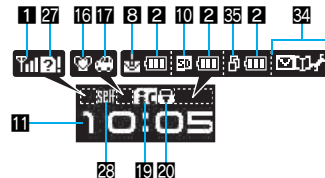
Icon list

Main display



-31-

Sub display



※ Icons are shown in the order of Main display and Sub display.

1		Signal strength indicator
2		Battery level
3		Charging
4		i-mode/Full Browser
5		SSL indicator
6		i-appli indicator
		Overseas 3G network

-32-

7		Shortcut menu display
8		i-mode mail/SMS/Area Mail received
9		Message R/F
10		microSD Memory Card is inserted
		Data on microSD Memory Card is being used
11		Clock display
12		1Seg being recorded
13		Record message
14		Silent
15		Vibrator enabled
16		Manner mode indication
17		Public mode (Drive mode) indication
18		i-mode center storage indication
19		IC card lock
20		Restriction enabled

-33-

21		Hands-free
22		Alarm
23		Music&Video Channel program reservation
24		i-mode mail send reservation
25		Earphone/Microphone connected
26		USB mode
27		FOMA card is malfunctioning or not inserted
28		Non-FOMA card is inserted
29		Self mode enabled
30		PushTalk in progress
31		Ir exchange/External device indicator
32		Private filter
33		Status of Comics setting
34		ToruCa
35		Multitask
36		Operation in progress

※ Refer to P. 34 to P. 38 of the manual for detailed explanations of displayed icons.

-34-

<Emergency contacts in case of loss or other accidents>

Omakase Lock

※ Omakase Lock is a paid service.
If Omakase Lock is subscribed while or at the same time as when the use of the FOMA terminal is suspended, the usage fee of Omakase Lock is not charged.

Enable/Disable Omakase Lock

0120-524-360

Office hours: 24hours

Other contacts

<Contacts: >

<Contacts: >

<Contacts: >

※ Please confirm the phone number before you dial.

-35-

Quick Manual "Overseas Use"

Loss or theft of FOMA terminal or payment of cumulative cost overseas <DoCoMo Information Center> (24-hour service)

For DoCoMo mobile phones

International call access code of your country of stay (Table 1) -81-3-5366-3114*(toll free)

* Communication charges to Japan will apply when you make a call from a fixed-line telephone.

※ If you use the SH905iTV, you should dial the number +81-3-5366-3114 (to dial "+", press the "0" key for 1+ seconds).

For fixed-line telephones

<Universal number>

International prefix number for the universal number (Table 2) -800-0120-0151*

* Communication charges or other charges to your country of stay will apply.

※ See P.19 to P.20 and P.21 to P.22 for international call access codes of major countries (Table1) and international prefix number for the universal number (Table2).

Setting the remote access

■ Setting in Japan

1 In the Custom menu, select [Settings] ▶ [Other NW Services] ▶ [Remote control] ▶ [Activate] ▶ [Yes].

■ Setting in overseas

1 In the Custom, select [Settings] ▶ [Phone settings] ▶ [Other settings] ▶ [International Roam.] ▶ [Remote access(Int.)] ▶ [Yes] ▶ operate according to the voice guidance.

Correcting the date and time automatically

1 In the Custom menu, select [Settings] ▶ [General settings] ▶ [Date settings] ▶ select the [Auto time correction] field ▶ [ON] ▶ [i].

Failures encountered overseas <Network Technical Operation Center> (24-hour service)

For DoCoMo mobile phones

International call access code of your country of stay (Table 1) -81-3-6718-1414*(toll free)

* Communication charges to Japan will apply when you make a call from a fixed-line telephone.

※ If you use the SH905iTV, you should dial the number +81-3-6718-1414 (to dial "+", press the "0" key for 1+ seconds).

For fixed-line telephones

<Universal number>

International prefix number for the universal number (Table 2) -800-5931-8600*

* Communication charges or other charges to your country of stay will apply.

※ See P.19 to P.20 and P.21 to P.22 for international call access codes of major countries (Table1) and international prefix number for the universal number (Table2).

Setting the time zone manually

1 In the Custom menu, select [Settings] ▶ [General settings] ▶ [Date settings] ▶ select the [Auto time correction] field ▶ [OFF].

2 Press [i] ▶ select a time zone ▶ select a city ▶ [i].

Available network

3G network	Available
GSM network	Not available
GPRS network	Not available

Preparing for overseas use

Setting i-mode

■ Setting in Japan

1 In stand-by, press [i] ▶ [iMenu] ▶ [English iMenu] ▶ [Options] ▶ [International Settings] ▶ [i-mode services Settings] ▶ [Yes] ▶ select the [Enter i-mode Password] field ▶ enter the i-mode password ▶ [OK].

■ Setting in overseas

1 In stand-by, press [i] ▶ [iMenu] ▶ [English iMenu] ▶ [International Settings] ▶ [i-mode services Settings] ▶ [Yes] ▶ select the [Enter i-mode Password] field ▶ enter the i-mode password ▶ [OK].

Services available overseas

Communications services	Explanation
Voice call	Make or receive calls in your country of stay or make international calls to Japan or to other countries with the same phone number as used in Japan while abroad.
Videophone	Make international Videophone calls to users of the specified 3G carriers overseas and FOMA users in Japan.
i-mode mail	Send/Receive i-mode mail overseas with the same address as used in Japan.
i-mode	Use i-mode overseas.
i-Channel	Use i-Channel overseas.
SMS	Send/Receive SMS overseas with the same address as used in Japan.
Data communication (packet transmission)	Use the packet transmission overseas.

Setting a search method of carrier

Network search mode

Default setting: Auto (Automatically switches to a telecommunications carrier)

1 In the Custom menu, select [Settings] ▶ [Phone settings] ▶ [Other settings] ▶ [International Roam.] ▶ [Network search mode].

2 Select [Auto] ▶ [Yes].

- To manually switch telecommunications carriers: Select [Manual] ▶ select a telecommunications carrier ▶ [Yes].
- To repeat a search for the target network: Select [Network re-search].

-6-

Setting a carrier to preferentially connect to

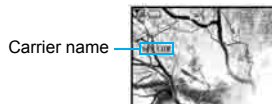
1 In the Custom menu, select [Settings] ▶ [Phone settings] ▶ [Other settings] ▶ [International Roam.] ▶ [Network search mode] ▶ [PLMN setting] ▶ select the priority number ▶ [Yes].

2 Select [UPLMN manual] ▶ enter the country code (MCC) ▶ [Yes].

- To save from a telecommunications carrier list: Select [UPLMN by list] ▶ select a communications carrier ▶ [Yes].
- To save the telecommunications carrier currently connected to: Select [Set VPLMN to PLMN] ▶ [Yes].
- To change the priority: Select [Change priority] ▶ select a destination ▶ [Yes].

-7-

Displaying a carrier in stand-by



1 In the Custom menu, select [Settings] ▶ [Phone settings] ▶ [Other settings] ▶ [International Roam.] ▶ [Operator name disp] ▶ [display ON] ▶ [Yes].

-8-

Setting after homecoming

If Network search mode is set to [Auto], reset Network search mode to the FOMA network (DoCoMo) automatically when the power is turned on.

■ Setting to the FOMA network (DoCoMo) manually

1 In the Custom menu, select [Settings] ▶ [Phone settings] ▶ [Other settings] ▶ [International Roam.] ▶ [Network search mode] ▶ [Manual] ▶ [DoCoMo].

-9-

Making calls

Making a call outside your country of stay (including Japan)

■ Using + to make an international call

1 In stand-by, press [0] (for 1+ seconds) ▶ enter the country code, area code (city code), and other party's phone number ▶ [Phone]/[V.phone].

- When the area code (city code) begins with 0, omit the 0 when dialing. However, include 0 when making a call to some countries or regions such as Italy.

■ Making an international call outside your country of stay using country code conversion

0 at the beginning of a phone number is automatically converted to the country code set in Country code conversion.

Ex.: Make a call from the phonebook

1 In stand-by, press [Phone]/[V.phone] ▶ [Call].

-10-

■ Making an international call

Save a country number using Set country code to select a country code before making an international call. The following is available overseas only.

1 In stand-by, enter a telephone number ▶ [Add prefix setting] ▶ [International Call] ▶ select the country code ▶ [Phone]/[V.phone].

■ Making a call to the phone in your country of stay

1 In stand-by, enter a telephone number ▶ [Phone]/[V.phone].

■ Making a call to the phone in your country of stay using the phonebook

1 In stand-by, press [Phone] ▶ select a person to call ▶ [Phone]/[V.phone] ▶ [Original number].

■ Making a call to a WORLD WING subscriber overseas

Even when making a call to the phone in your country of stay, make an international call to Japan if the call recipient is a "WORLD WING" subscriber.

-11-

- 1 In stand-by, press **0** (for 1+ seconds) **8 1** **0** enter the other party's mobile phone number excluding **0** **(Phone)/** **(V.phone)**.

Receiving calls

- 1 Press **(hook)** to answer an incoming call.

■ Having calls made to your FOMA terminal from Japan

Enter the phone number in the same way as it is entered in Japan and make a call.

■ Having calls made to your FOMA terminal from countries other than Japan

Enter international access code of the country of the caller-81-user's phone number excluding **0** and make a call.

-12-

Setting the roaming guidance

Make this setting while still in Japan
 ※ In the confirmation screen, select [Yes].

- 1 In the Custom menu, select [Settings] ▶ [Other NW Services] ▶ [Roaming guidance].
 2 Select [Activate].
- To deactivate: Select [Deactivate].
 - To check settings: Select [Status request].

-13-

Call barring

● Depending on the overseas telecommunications carrier, the setting cannot be made.

- 1 In the Custom menu, select [Settings] ▶ [Phone settings] ▶ [Other settings] ▶ [International Roam.] ▶ [Call barring].
 2 Select [Activate] ▶ select the barring method **(hook)** ▶ enter the network security code **(hook)**.
- To deactivate: Select [Deactivate] ▶ enter the network security code **(hook)**.
 - To check settings: Select [Status request].

-14-

Using network service

- To use a network service overseas, set Remote control to "Activate".
- ※ In the confirmation screen, select [Yes].
- ※ Operate according to the voice guidance.

Voice Mail (Int.)

- 1 In the Custom menu, select [Settings] ▶ [Phone settings] ▶ [Other settings] ▶ [International Roam.] ▶ [Voice Mail(Int.)].
 2 Select [Activate Voice Mail].
- To deactivate: Select [Deactivate].
 - To play messages: Select [Play Messages].
 - Service settings: Select [Voice Mail settings].

-15-

Call Forward (Int.)

- 1 In the Custom menu, select [Settings] ▶ [Phone settings] ▶ [Other settings] ▶ [International Roam.] ▶ [Call Forward (Int.)].
 2 Select [Activate].
- To deactivate: Select [Deactivate].
 - Service settings: Select [Settings].

Roaming guidance (Int.)

- 1 In the Custom menu, select [Settings] ▶ [Phone settings] ▶ [Other settings] ▶ [International Roam.] ▶ [Roam. guidance(Int.)].

-16-

Country codes of major countries

The following shows "Country code" used for making international calls or setting International dial assistant.

(As of December 2007)

Country/Region	Code	Country/Region	Code
Australia	61	Maldives	960
Austria	43	Netherlands	31
Belgium	32	New Caledonia	687
Brazil	55	New Zealand	64
Canada	1	Norway	47
China	86	Peru	51
Czech	420	Philippines	63
Egypt	20	Russia	7
Fiji	679	Singapore	65
Finland	358	South Korea	82
France	33	Spain	34
Germany	49	Sweden	46
Greece	30	Switzerland	41

-17-

Country/Region	Code	Country/Region	Code
Hong Kong	852	Tahiti (French Polynesia)	689
Hungary	36		
India	91	Taiwan	886
Indonesia	62	Thailand	66
Italy	39	Turkey	90
Japan	81	U.K.	44
Macao	853	U.S.A.	1
Malaysia	60	Vietnam	84

※ For other country codes and details, refer to the "DoCoMo global service web page".

-18-

International call access codes of major countries (Table 1)

The following shows the International call access codes of major countries.

(As of August 2007)

Country/Region	Code	Country/Region	Code
Australia	0011	Monaco	00
Belgium	00	Netherlands	00
Brazil	0041/ 0014	New Zealand	00
		Norway	00
Canada	011	Philippines	00
China	00	Poland	00
Czech	00	Portugal	00
Denmark	00	Russia	810
Finland	00	Singapore	001
France	00	South Korea	001
Germany	00	Spain	00
Greece	00	Sweden	00
Hong Kong	001	Switzerland	00

-19-

Country/Region	Code	Country/Region	Code
Hungary	00	Taiwan	002
India	00	Thailand	001
Indonesia	001	Turkey	00
Ireland	00	U.A.E.	00
Italy	00	U.K.	00
Luxemburg	00	U.S.A.	011
Macao	00	Vietnam	00
Malaysia	00		

-20-

International prefix number for the universal number (Table 2)

The following shows the International prefix number for the universal number of each country.

(As of August 2007)

Country/Region	Code	Country/Region	Code
Argentina	00	Luxemburg	00
Australia	0011	Malaysia	00
Austria	00	Netherlands	00
Belgium	00	New Zealand	00
Brazil	0021	Norway	00
Bulgaria	00	Peru	00
Canada	011	Philippines	00
China	00	Portugal	00
Columbia	009	Singapore	001
Denmark	00	South Africa	09
Finland	990	South Korea	001
France	00	Spain	00
Germany	00	Sweden	00

-21-

Country/Region	Code	Country/Region	Code
Hong Kong	001	Switzerland	00
Hungary	00	Taiwan	00
Ireland	00	Thailand	001
Israel	014	U.K.	00
Italy	00	U.S.A.	011

-22-

About inquiries overseas

For lost, stolen, and cost settlement, or malfunction of the FOMA terminal overseas, refer to "Loss or theft of FOMA terminal or payment of cumulative cost overseas" on the cover of Quick Manual "Overseas Use" or "Failures encountered overseas" on P. 1.

- Add the "international call access code" of your country of stay that is assigned to your country of stay, or the "international prefix number for the universal number", to the head of your phone number for inquiries.

-23-

Access DoCoMo e-site for procedures to change your address or billing plan and for request of information materials.

From i-mode iMenu ▶ 料金 & お申込・設定 (Charges & Applications/Setting) ▶ 各種手続き (ドコモeサイト) (Application procedure (DoCoMo e-site))
Packet communication charges free

From a PC My DoCoMo (<http://www.mydocomo.com/>) ▶ 各種手続き (ドコモeサイト) (Application procedure (DoCoMo e-site))

- ※ You will need your "Network Security Code" to access e-site from i-mode.
- ※ No packet communication charges are incurred when accessing e-site from i-mode. Accessing from overseas will incur charges.
- ※ You will need your "DoCoMo ID/Password" to access e-site from PC.
- ※ If you do not have or you have forgotten your "Network Security Code" or "DoCoMo ID/Password", contact the number listed in General Inquiries on the back of this manual.
- ※ DoCoMo e-site may not be available depending upon the content of your subscription.
- ※ You may not be able to access some e-site services due to system maintenance, etc.

Please follow proper etiquette

When using your FOMA terminal, please be considerate of those around you.

Turn off your FOMA terminal in the following places

■ When in an area where use is prohibited

There are places where the use of mobile phones is prohibited. Be sure to turn off your FOMA terminal in the following places.

★ On an aircraft ★ In a hospital

- ※ There are people outside hospital wards who also use electric medical equipment.
Please make sure that your FOMA terminal is turned off in the lobby and waiting room.

■ While driving

Using a mobile phone in hand while driving is regarded as a punishable act.

- ※ If there is no choice but to receive a call, use Hands-free and tell the caller that you will "call back", and then pull over to a safe place to make a call.

■ When in crowded places such as rush-hour trains in case somebody nearby is using an implanted cardiac pacemaker or implanted cardioverter-defibrillator

Your FOMA terminal may affect the operation of such equipment.

■ When in public places such as theaters, movie theaters, or museums

Use of your FOMA terminal in quiet public places will annoy others.

Be careful of where you use your FOMA terminal and the volume of your voice and the ring tone

- When using your FOMA terminal in a restaurant or a hotel lobby, lower your voice.
- In crowded places, be careful not to obstruct other pedestrians.

Be considerate of the privacy of the individuals around you



Please be considerate of the privacy of individuals around you when taking and sending images using a camera-enabled mobile phones.

The following functions will help you abide by these guidelines There are useful functions you can use to set your FOMA terminal not to answer incoming calls, and to silence all sounds.

- **Manner mode** (☎ P. 115)/**Original manner mode** (☎ P. 116)
Silences the Key/Standby i-motion sound and all the sounds from the FOMA terminal, and Record message is set (Manner mode). When in the Manner mode, automatically set functions (Record message, Vibrator, Mic sensitivity up, Ring tone, Mail ring tone, alarm tone, Key/Standby i-motion sound and Low battery alarm) can be set to ON (enable)/OFF (disable) (Original manner mode).
- **Public mode (Drive mode)** (☎ P. 73)
The caller hears a guidance message that informs the receiver is driving and unable to answer. The call then disconnects. Your FOMA terminal does not sound even when it receives calls, so you can drive safely.
- **Vibration mode** (☎ P. 113)
Notifies incoming calls by vibration.
- **Record message** (☎ P. 76)
When you are unable to take a call, the Record message function records the caller's message.
※ You can also use optional services such as Voice Mail Service (☎ P. 414) and Call Forwarding Service (☎ P. 417).