

| Data type | Number of applicable entries to be saved/registered | Number of applicable entries to be protected |
|-----------------------------|---|--|
| i-appli | 100 ^{*5} | — |
| Mail-type i-appli | 5 | — |
| Still picture | 1,000 ^{*5} | — |
| User folder | 20 | — |
| Movie/i-motion | 100 ^{*5} | — |
| User folder | 20 | — |
| Kisekae Tool | 50 ^{*5} | — |
| User folder | 20 | — |
| Machi-chara | 50 ^{*5} | — |
| User folder | 20 | — |
| Chara-den | 50 ^{*5} | — |
| User folder | 20 | — |
| Melody | 500 ^{*5} | — |
| User folder | 20 | — |
| PDF data | 50 ^{*5} | — |
| User folder | 20 | — |
| ToruCa | 200 ^{*5} | — |
| User folder | 20 | — |
| e-book/e-dictionary/e-comic | 1,000 ^{*5, 6} | — |
| User folder | 400 ^{*8} | — |

*1 Up to 50 entries can be saved in the FOMA card.

*2 Total number of the timers for starting and recording programs.

*3 Save a national holiday besides holidays already saved.

*4 For SMS, up to 20 received and sent messages can be saved in the FOMA card (☎ P. 228).

*5 Capacity may decrease depending on the available memory (☎ P. 348).

*6 Pre-installed data is included.

*7 Set up to five dictionaries.

*8 Pre-installed folder is included.

Specific Absorption Rate (SAR)

This model phone FOMA SH906i meets the MIC's* technical regulation for exposure to radio waves.

The technical regulation established permitted levels of radio frequency energy, based on standards that were developed by independent scientific organizations through periodic and thorough evaluation of scientific studies. The regulation employs a unit of measurement known as the Specific Absorption Rate, or SAR. The SAR limit is 2 watts/kilogram (W/kg)** averaged over ten grams of tissue. The limit includes a substantial safety margin designed to assure the safety of all persons, regardless of age and health. The value of the limit is equal to the international guidelines recommended by ICNIRP***.

All phone models should be confirmed to comply with the regulation, before they are available for sale to the public. The highest SAR value for this model phone is 0.457 W/kg. It was taken by the Telecom Engineering Center (TELEC), a Registered Certification Agency on the Radio Law. The test for SAR was conducted in accordance with the MIC testing procedure using standard operating positions with the phone transmitting at its highest permitted power level in all tested frequency bands. While there may be differences between the SAR levels of various phones and at various positions, they all meet the MIC's technical regulation. Although the SAR is determined at the highest certified power level, the actual SAR of the phone during operation can be well below the maximum value.

For further information about SAR, please see the following websites:

World Health Organization (WHO)

<http://www.who.int/peh-emf/>

ICNIRP

<http://www.icnirp.de/>

MIC

<http://www.tele.soumu.go.jp/e/ele/body/index.htm>

TELEC

http://www.telec.or.jp/ENG/Index_e.htm

NTT DoCoMo

<http://www.nttdocomo.co.jp/english/product/>

SHARP Corporation

<http://www.sharp.co.jp/products/menu/phone/cellular/sar/index.html>

* Ministry of Internal Affairs and Communications

** The technical regulation is provided in Article 14-2 of the Ministry Ordinance Regulating Radio Equipment.

***International Commission on Non-Ionizing Radiation Protection

European RF Exposure Information

Your mobile device is a radio transmitter and receiver. It is designed not to exceed the limits for exposure to radio waves recommended by international guidelines. These guidelines were developed by the independent scientific organization ICNIRP and include safety margins designed to assure the protection of all persons, regardless of age and health.

The guidelines use a unit of measurement known as the Specific Absorption Rate, or SAR. The SAR limit for mobile devices is 2 W/kg and the highest SAR value for this device when tested at the ear was \$\$ W/kg*.

As SAR is measured utilizing the devices highest transmitting power the actual SAR of this device while operating is typically below that indicated above. This is due to automatic changes to the power level of the device to ensure it only uses the minimum level required to reach the network.

The World Health Organization has stated that present scientific information does not indicate the need for any special precautions for the use of mobile devices. They note that if you want to reduce your exposure then you can do so by limiting the length of calls or using a hands-free device to keep the mobile phone away from the head.

* The tests are carried out in accordance with international guidelines for testing.

Declaration of Conformity

CE 0168

Hereby, Sharp Telecommunications of Europe Ltd, declares that this FOMA SH906i is in compliance with the essential requirements and other relevant provisions of Directive 1999/5/EC.

A copy of the original declaration of conformity can be found at the following Internet address:
<http://www.sharp.co.jp/k-tai/>

FCC Notice

- This device complies with part 15 of the FCC Rules. Operation is subject to the following two conditions:
 - (1) This device may not cause harmful interference, and (2) this device must accept any interference received, including interference that may cause undesired operation.
- Changes or modifications not expressly approved by the manufacturer responsible for compliance could void the user's authority to operate the equipment.

FCC RF Exposure Information

Your handset is a radio transmitter and receiver.

It is designed and manufactured not to exceed the emission limits for exposure to radio frequency (RF) energy set by the Federal Communications Commission of the U.S. Government.

The guidelines are based on standards that were developed by independent scientific organisations through periodic and thorough evaluation of scientific studies. The standards include a substantial safety margin designed to assure the safety of all persons, regardless of age and health.

The exposure standard for wireless handsets employs a unit of measurement known as the Specific Absorption Rate, or SAR. The SAR limit set by the FCC is 1.6 W/kg.

The tests are performed in positions and locations (e.g., at the ear and worn on the body) as required by the FCC for each model. The highest SAR value for this model handset when tested for use at the ear is $\$ \$$ W/kg and when worn on the body, as described in this user guide, is $\$ \$$ W/kg.

Body-worn Operation; This device was tested for typical body-worn operations with the back of the handset kept 1.5 cm from the body. To maintain compliance with FCC RF exposure requirements, use accessories that maintain a 1.5 cm separation distance between the user's body and the back of the handset. The use of beltclips, holsters and similar accessories should not contain metallic components in its assembly.

The use of accessories that do not satisfy these requirements may not comply with FCC RF exposure requirements, and should be avoided.

The FCC has granted an Equipment Authorization for this model handset with all reported SAR levels evaluated as in compliance with the FCC RF emission guidelines. SAR information on this model handset is on file with the FCC and can be found under the Display Grant section of <http://www.fcc.gov/oet/fccid> after searching on FCC ID APYHRO00066.

Additional information on Specific Absorption Rates (SAR) can be found on the Cellular Telecommunications & Internet Association (CTIA) Website at <http://www.phonefacts.net>.

Export Control Regulations

The Japan Export Control Regulations (“Foreign Exchange and International Trade Law” and its related laws) will be applied to this product and its accessories under certain conditions. The Export Administration Regulations are also applied. To export or reexport this terminal and its accessories, conduct all legally required procedures at your own risk and expense. For details on the procedures, contact the Ministry of Economy, Trade and Industry or the US Department of Commerce.

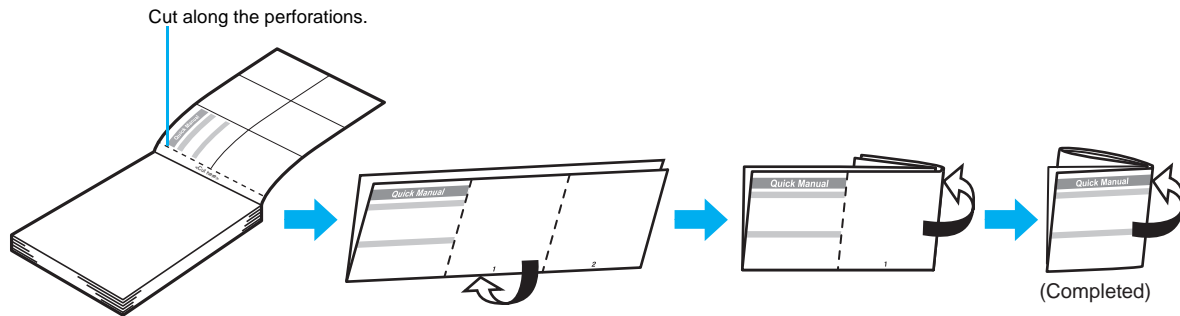
Quick Manual

How to use the Quick Manual

Remove the Quick Manual attached to the end of this manual by cutting along the perforations and fold it as shown below. Carry the Quick Manual "Overseas Use" when the mobile phone is used with the International Roaming (WORLD WING) overseas.

Folding the Quick Manual

- Be careful of injuries when cutting out the Quick Manual.



- 2 Press **[]** **[]** **[]**.
- 3 Press **[4]** **[5]** **[3]** **[]** **[テニス]**.
 - Use **[]** for One-touch conversion.
- 4 Press **[]** (five times) **[]** **[]** **[]**.
 - Press **[]** (five times) for single-byte alphanumeric mode.
- 5 Press **[]** (twice) **[]** **[]** **[]** (twice) **[X]** **[]** **[]** **[時]**.
 - Use **[X]** for dakuten mark.
- 6 Press **[]** **[]**.



-6-

Changing the font (font style)

- 1 In the Custom menu, select [Settings] **[]** [Disp/LED/Power saver] **[]** [Font style] **[]** [Font style setting] **[]** select the font **[]**.

Changing the font size

- 1 In the Custom menu, select [Settings] **[]** [Disp/LED/Power saver] **[]** [Font style] **[]** [Font size] **[]** [Individual setting] **[]** select the [Input] field **[]** select the font size **[]** **[]** [Yes].
 - To change collectively: In stand-by, press **[5]** (for 1+ seconds).

-7-

Camera

Shooting still pictures

- 1 In stand-by, press **[]** **[]** **[]**.
- Shooting panoramic pictures
 - 1 In the still picture shooting screen, press **[]** **[]** move the FOMA terminal to either direction of left or right **[]** **[]**.

Shooting movies

- 1 In the still picture shooting screen, press **[]** [Switch camera-mode] **[]** [Movie] **[]** **[]** **[]** [Save].

Displaying still pictures

- 1 In the Custom menu, select [Data box] **[]** [My picture] **[]** select a still picture **[]**.

-8-

Playing back movies

- 1 In the Custom menu, select [Data box] **[]** [i-motion] **[]** select a movie **[]**.

Watching 1Seg

Performing the Automatic channel setting

- 1 In the Custom menu, select [1Seg] **[]** [Channel setting].
- 2 Select the number to save **[]** **[]** [Auto channel set] **[]** [Yes].
- 3 Select a prefecture/district **[]** **[]** **[]** [Yes].

Selecting a channel list

- 1 In the Custom menu, select [1Seg] **[]** [Channel setting] **[]** select a channel list **[]**.

Watching 1Seg

- 1 In stand-by, press **[]** (for 1+ seconds).

-9-

Watching videos

- 1 In the Custom menu, select [Data box] **[]** [1Seg] **[]** select a video **[]**.

Music playback

Using the MUSIC Player

- 1 In the Custom menu, select [Data box] **[]** [MUSIC] **[]** select the data type **[]** select music data **[]**.

Key operations during playback

| | |
|----------------------|------------|
| To pause/play | [] |
| To stop | [] |
| To adjust the volume | [] |

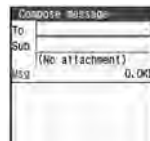
-10-

| | |
|---|--|
| To play previous song/return to the beginning of song | [] |
| To play next song | [] |
| To end MUSIC Player | [] [] [] [Yes] |

Mail

Composing and sending i-mode mail

- 1 In stand-by, press **[]** (for 1+ seconds) **[]** select the [To] field **[]** select the input method.
 - Select [Search phonebook] **[]** select a recipient **[]**.
 - Select [Direct input] **[]** enter an address **[]**.
 - Select [Sent messages] **[]** select a recipient **[]** **[]**.
 - Select [Rcvd messages] **[]** select a recipient **[]** **[]**.



-11-

- ◆ Select [Mail members] ▶ select a mail member ▶ [] .
- 2 Select the [Sub] field ▶ [] ▶ enter a subject ▶ [] ▶ [Msg] ▶ enter the message text ▶ [] ▶ [] .

Sending Deco-mail

- 1 In the text input screen, press [] ▶ [Decorate mail] ▶ select a decoration type ▶ [] ▶ specify decoration ▶ [] ▶ input text ▶ [] ▶ [] .

Attaching a file

- 1 In stand-by, press [] (for 1+ seconds) ▶ select the attachment field (No attachment) ▶ [] ▶ select the file to attach.
- ◆ Select [Image] ▶ select an image ▶ [] .
 - ◆ Select [Melody] ▶ select a melody ▶ [] .
 - ◆ Select [i-motion] ▶ select an i-motion ▶ [] .
 - ◆ Select [ToruCa] ▶ select a ToruCa ▶ [] .
 - ◆ Select [PDF] ▶ select a PDF ▶ [] .

Menu list

Switching between the Custom menu/Basic menu

- 1 In the Custom menu/Basic menu, press [] .

Recalling a function number

- 1 In the Basic menu, enter a function number.

| 1 Snd/Vibrator/Manner | |
|-----------------------|---|
| 1 Select volume | phone ring vol, Mail ring vol, PushTalk tone vol, Key/Standby i-motion, Charge start sound, Charge end sound, Timer sound, GPS volume |
| 2 Select sound | Select ring tone, Select mail tone, PushTalk tone, Shutter sound, Timer sound, GPS tone |
| 3 Vibrator | Vibration mode, Mail vibration, GPS vibrator, Touch panel vib |
| 4 Manner mode | ON (Normal, Silent, Original), OFF |
| 5 Headset setting | |

- ◆ Select [Phonebook] ▶ select a save destination ▶ [] ▶ select a name ▶ [] .
- ◆ Select [Schedule] ▶ select a save destination ▶ [] ▶ (select a day []) ▶ select a schedule ▶ [] .
* No operation is needed if [microSD] is selected as the save destination
- ◆ Select [Bookmark] ▶ select a save destination ▶ [] ▶ select a bookmark ▶ [] .
- ◆ Select [Document] ▶ select a file ▶ [] .
- ◆ Select [Other] ▶ select a file ▶ [] .
- ◆ Select [Start cam (still)] ▶ [] ▶ [] .
- ◆ Select [Start cam (movie)] ▶ [] ▶ [] ▶ [Save] .

Composing and sending SMS

- 1 In stand-by, press [] ▶ [Compose SMS] ▶ select the [To] field ▶ [] ▶ [Direct input] ▶ enter an address ▶ [] ▶ [Msg] ▶ enter the message ▶ [] ▶ [] .

| 1 Snd/Vibrator/Manner | |
|-------------------------|---|
| 6 Ring time setting | Mail ring time set, PT ring time set, GPS ring time set |
| 7 Set mute ring time | |
| 8 Hold/On hold tone | Set on hold tone, Set hold tone |
| 9 Snd playback (melody) | Stereo effects, Equalizer |

| 2 Disp/LED/Power saver | |
|------------------------|--|
| 1 Set screen | Stand-by display, Clock display, Calendar display, Stand-by memo disp, Desktop clock |
| 2 Font style | Font style setting, Font size |
| 3 Themes | Kisekae Tool, Call/Rcv display, Send/Rcv display, Submenu image, Dial image set, Animate notices, Signal/batt/s clock, Color theme setting |

Receiving mail automatically

- 1 Mail is automatically received.
- 2 Select [Mail] ▶ select mail ▶ [] .

Checking for new i-mode mail

- 1 In stand-by, press [] ▶ [Check new message].
● SMS: Press [] ▶ [Check new SMS].

Replying to i-mode mail

- 1 In the received message details screen, press [] ▶ [Reply/Forward].
- 2 Select the reply method ▶ [] .
- 3 Compose and send a mail.

Forwarding i-mode mail

- 1 In the received message details screen, press [] ▶ [Reply/Forward] ▶ [Forward].
- 2 Enter an address and send a mail.

| 2 Disp/LED/Power saver | |
|------------------------|--|
| 4 LED settings | Called LED, Mail LED, Notice LED, In-call LED, Alarm/Timer LED, IC card LED, Open/close LED, GPS LED |
| 5 Display img quality | Vibrant image mode, Control by scene |
| 6 Light/Power saver | Norm (auto bright), Norm (fixed bright), Eco mode (Pwr saver), Original Eco mode |
| 7 VeilView | Dis temp in stdby, Pattern |
| 8 Menu priority | |

| ③ General settings | |
|----------------------|--|
| ① Check status | Owner Information, Check memory, Battery level, Check settings |
| ② Text input setting | User dictionary, Dwnld dictionary, Edit phrase, Clear memory terms |
| ③ Auto power ON/OFF | Auto power ON, Auto power OFF, Link alarm/power ON |
| ④ Date settings | |
| ⑤ Select language | |
| ⑥ TOUCH CRUISER set | Usage settings, Pointer speed, Scroll speed |
| ⑦ USB mode setting | |
| ⑧ Scanning function | Update, Set auto-update, Set scan, Version |
| ⑨ Software update | |
| ⑩ Reset settings | |

-18-

| ④ NW Services | |
|----------------------|---|
| ① Voice Mail | Check messages, Play Messages, Activate VoiceMail, Set ring time, Deactivate VoiceMail, Check setting, Voice Mail setting, Notification setting, Notification |
| ② Call waiting | Activate, Deactivate, Check setting |
| ③ Call forwarding | Activate, Deactivate, Register number, Forwarding No. busy, Check setting |
| ④ Bar nuisance calls | Register caller, Register selected No, Delete all entries, Delete last entry, Check No of entries |
| ⑤ Notify caller ID | Check setting, Notify caller ID |
| ⑥ Caller ID request | Activate, Deactivate, Check setting |
| ⑦ Talk time/cost | |
| ⑧ 2in1 setting | Mode switching, Phonebook 2in1 set, Stand-by display, Set call/receive No., 2in1 function OFF, Receive avoidance |

-19-

| ④ NW Services | |
|-----------------------|-----------------------------------|
| ⑨ In-call arrival act | Set arrival act, Arrival Call Act |

| ⑤ Other NW Services | |
|----------------------|---|
| ① Remote control | Activate, Deactivate, Check setting |
| ② Dual network | Switching, Status request |
| ③ English guidance | Guidance setting, Check setting |
| ④ Service number | ドコモ故障問合せ, ドコモ総合案内・受付 |
| ⑤ Additional service | USSD, Reply message |
| ⑥ Multi number | Set multi number, Check setting, Number setting |
| ⑦ Chaku-moji | Create message, Message display |
| ⑧ Roaming guidance | Activate, Deactivate, Status request |

-20-

| ⑥ Phone settings | |
|----------------------|--|
| ① In-call settings | Noise reduction, Reconnect signal, Quality alarm |
| ② Headset sw to call | |
| ③ Incoming settings | Any key answer, Auto answer setting, Melody Call setting |
| ④ Videophone set | Redial voice call, Set sending image, Display setting, Subscreen position, Visual preference, Notify switch mode, Hands-free V.phone, V-phone while packet |
| ⑤ Record message | Record message, Answering duration, Reply message, V.phone reply image |
| ⑥ Set PushTalk | Set PT arrival act, Hands-free PT |
| ⑦ Set when folded | Phone/Videophone, PushTalk |
| ⑧ Self mode | |
| ⑨ Other settings | Int'l prefix, Sub address, Int'l dial assist, International Roam., In-area status |

-21-

| ⑦ Security | |
|------------------------|---|
| ① Secret mode | |
| ② UIM Settings | PIN1 code input set, Change PIN1 code, Change PIN2 code |
| ③ Accept/Reject calls | Accept calls, Reject calls, Reject unknown, User unset, Reject payphone, Reject not support |
| ④ Show call/received | Show rcvd calls, Show redial |
| ⑤ Show sent/received | Show sent messages, Show rcvd messages |
| ⑥ Lock settings | All lock, Keypad dial lock, Function lock, IC card lock, Multi easy lock set, Multi lock auto-set |
| ⑦ Change security code | |
| ⑧ Writing authentic | |
| ⑨ Delete all data | Delete user data, Del secret data |

-22-

| Other settings | |
|-------------------|--|
| ⑧ Initial setting | |
| ⑩ Own number | |

-23-

| |
|-------------------------|
| 1 My picture |
| 2 MUSIC |
| 3 Music&Video ch |
| 4 i-motion |
| 5 1Seg |
| 6 Melody |
| 7 My Documents |
| 8 Kisekai Tool |
| 9 Machi-chara |
| 0 Chara-den |

-24-

| | |
|----------------------------|--|
| 2 LifeKit | |
| 1 Bar code reader | |
| 2 Receive Ir data | |
| 3 microSD manager | View microSD data, Backup/restore, Import, New manager info, Format, USB mode setting |
| 4 Bluetooth | Accept Registered, Receive Bluetooth, List/cnnc/discnct, Register new device, Bluetooth Power OFF, Bluetooth setting |
| 5 Card reader | |
| 6 Text memo | |
| 7 Character reader | |
| 8 Schedule | |
| 9 Timer/Alarm | Timer, Alarm, Wakeup TV |
| 0 Calculator | |
| X Data Sec. Service | |
| + GPS menu | Position location, i-appli, Location history, Set position loc., Loc.notification/set, Loc. request menu |

-25-

| | |
|-----------------------------|--|
| 3 Media tool | |
| 1 Manga&BookReader | |
| 2 Document Viewer | |
| 3 PDF Viewer | |
| 4 Voice recorder | |
| 5 Voice memo/Rec msg | |
| 6 Quick search | |
| Other menus | |
| 4 MUSIC | |
| 5 Osaifu-Keitai | |
| 6 1Seg | |

-26-

Other functions

| | |
|--|---|
| Manner mode enable/disable | + (for 1+ seconds) |
| Public mode (Drive mode) activate/deactivate | X (for 1+ seconds) |
| Multi easy lock activate/deactivate | + (for 1+ seconds) |
| Show i-Channel list | CLR (ch) |
| Activate Quick search | + |
| Show i-mode menu | i |
| Show i-appli software list screen | i (X) (for 1+ seconds) |
| Supportbook | + |
| Activate Multi Assistant (Multitask) | + while using a function |
| Display Shortcut menu | + |
| Register Shortcut menu | + (for 1+ seconds) when + appears |
| Side Key Guard Set/Disable | + (for 1+ seconds) |
| VeilView ON/OFF | + (for 1+ seconds) in the screen other than stand-by |

-27-

Network services

※ In the confirmation screen, select [Yes].

Voice Mail Service

Voice Mail Service is a paid option (monthly fees apply) that requires subscription.

- In the Custom menu, select [Settings] ▶ [NW Services] ▶ [Voice Mail].**
- Select [Activate VoiceMail] ▶ [Activate VoiceMail].**
 - To deactivate: Select [Deactivate VoiceMail].
 - To play messages: Select [Play Messages].
 - To check messages: Select [Check messages].

-28-

Call Waiting

Call Waiting is a paid option (monthly fees apply) that requires subscription.

- In the Custom menu, select [Settings] ▶ [NW Services] ▶ [Call waiting].**
- Select [Activate].**
 - To deactivate: Select [Deactivate].
 - To check settings: Select [Check setting].

Call Forwarding Service

Call Forwarding Service is a free option (no monthly fees) that requires subscription.

- In the Custom menu, select [Settings] ▶ [NW Services] ▶ [Call forwarding].**
- Select [Activate] ▶ [Activate].**
 - To deactivate: Select [Deactivate].
 - To check settings: Select [Check setting].

-29-

Caller ID Request Service

Subscription is not required (no monthly fees).

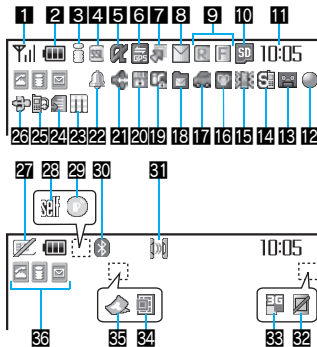
1 In the Custom menu, select [Settings] ▶ [NW Services] ▶ [Caller ID request].

2 Select [Activate].

- To deactivate: Select [Deactivate].
- To check settings: Select [Check setting].

-30-

Icon list



-31-

| | | |
|----|--|------------------------------------|
| 1 | | Signal status |
| 2 | | Battery level |
| | | Charging |
| 3 | | i-mode/Full Browser |
| 4 | | SSL |
| 5 | | i-appli |
| 6 | | GPS |
| 7 | | Shortcut menu |
| 8 | | i-mode mail/SMS/Area Mail received |
| 9 | | Message R/F |
| 10 | | microSD Card is inserted |
| | | microSD Card is being used |
| 11 | | Clock display |
| 12 | | 1Seg being recorded |
| 13 | | Record message |
| 14 | | Silent |

-32-

| | | |
|----|--|---|
| 15 | | Vibrator |
| 16 | | Manner mode |
| 17 | | Public mode (Drive mode) |
| 18 | | Storage status of i-mode center |
| 19 | | IC card lock |
| 20 | | Restriction indicator |
| 21 | | Hands-free |
| | | Mute |
| | | Bluetooth hands-free |
| 22 | | Alarm |
| 23 | | Music&Video Channel program reservation |
| 24 | | i-mode mail send reservation |
| 25 | | Earphone/Microphone connection |
| 26 | | USB mode |
| 27 | | FOMA card is malfunctioning or not inserted |
| | | Non-FOMA card is inserted |
| 28 | | Self mode |

-33-

| | | |
|----|--|---|
| 29 | | PushTalk |
| 30 | | Bluetooth |
| 31 | | Ir exchange/Bluetooth communication/External device |
| 32 | | VeilView |
| 33 | | 3G/GSM |
| 34 | | Status of Comics setting |
| 35 | | ToruCa |
| 36 | | Multitask |

※ Refer to P. 34 to P. 38 of the manual for detailed explanations of displayed icons.

-34-

<Emergency contacts in case of loss or other accidents>

Omakase Lock

※ Omakase Lock is a paid service.
If Omakase Lock is subscribed while or at the same time as when the use of the FOMA terminal is suspended, the usage fee of Omakase Lock is not charged.

Enable/Disable Omakase Lock

0120-524-360

Office hours: 24hours

Other contacts

<Contacts: >

<Contacts: >

<Contacts: >

※ Please confirm the phone number before you dial.

-35-



FOMA SH906i

Quick Manual "Overseas Use"

Loss or theft of FOMA terminal or payment of cumulative cost overseas <DoCoMo Information Center> (24-hour service)

For DoCoMo mobile phones

International call access code of your country of stay (Table 1) -81-3-5366-3114*(toll free)

* Communication charges to Japan will apply when you make a call from a fixed-line telephone.

※ If you use the SH906i, you should dial the number +81-3-5366-3114 (to dial "+", press the "0" key for 1+ seconds).

For fixed-line telephones

<Universal number>

International prefix number for the universal number (Table 2) -800-0120-0151*

* Communication charges or other charges to your country of stay will apply.

※ See P.19 to P.20 and P.21 to P.22 for international call access codes of major countries (Table1) and international prefix number for the universal number (Table2).

<Cut here>

Setting the remote access

■ Setting in Japan

1 In the Custom menu, select [Settings] ▶ [Other NW Services] ▶ [Remote control] ▶ [Activate] ▶ [Yes].

■ Setting in overseas

1 In the Custom menu, select [Settings] ▶ [Phone settings] ▶ [Other settings] ▶ [International Roam.] ▶ [Remote access(Int.)] ▶ [Yes] ▶ operate according to the voice guidance.

Correcting the date and time automatically

1 In the Custom menu, select [Settings] ▶ [General settings] ▶ [Date settings] ▶ select the [Auto time correction] field ▶ [ON] ▶ [i].

Failures encountered overseas <Network Technical Operation Center> (24-hour service)

For DoCoMo mobile phones

International call access code of your country of stay (Table 1) -81-3-6718-1414*(toll free)

* Communication charges to Japan will apply when you make a call from a fixed-line telephone.

※ If you use the SH906i, you should dial the number +81-3-6718-1414 (to dial "+", press the "0" key for 1+ seconds).

For fixed-line telephones

<Universal number>

International prefix number for the universal number (Table 2) -800-5931-8600*

* Communication charges or other charges to your country of stay will apply.

※ See P.19 to P.20 and P.21 to P.22 for international call access codes of major countries (Table1) and international prefix number for the universal number (Table2).

Setting the time zone manually

- 1 In the Custom menu, select [Settings] ▶ [General settings] ▶ [Date settings] ▶ select the [Auto time correction] field ▶ [OFF].
- 2 Press [i] ▶ select a time zone ▶ select a city ▶ [i].

Available network

| | |
|--------------|-----------|
| 3G network | Available |
| GSM network | Available |
| GPRS network | Available |

Setting network communication system

1 In the Custom menu, select [Settings] ▶ [Phone settings] ▶ [Other settings] ▶ [International Roam.] ▶ [3G/GSM setting] ▶ select the communication method ▶ [i].

Preparing for overseas use

Setting i-mode

■ Setting in Japan

1 In stand-by, press [i] ▶ [iMenu] ▶ [English iMenu] ▶ [Options] ▶ [International Settings] ▶ [i-mode services Settings] ▶ [Yes] ▶ select the [Enter i-mode Password] field ▶ enter the i-mode password ▶ [OK].

■ Setting in overseas

1 In stand-by, press [i] ▶ [iMenu] ▶ [English iMenu] ▶ [International Settings] ▶ [i-mode services Settings] ▶ [Yes] ▶ select the [Enter i-mode Password] field ▶ enter the i-mode password ▶ [OK].

Services available overseas

| Communication service | 3G | GSM | GPRS |
|--|----|-----|------|
| Voice call | ○ | ○ | ○ |
| Videophone | ○ | × | × |
| i-mode mail | ○ | × | ○ |
| i-mode | ○ | × | ○ |
| i-Channel | ○ | × | ○ |
| SMS | ○ | ○ | ○ |
| Data communication (packet transmission) | ○ | × | ○ |

● Unable to use 64K data communication by connecting a PC, etc. overseas.

Setting a search method of telecommunications carrier

Network search mode

Default setting: Auto (Automatically switches telecommunications carriers)

- 1 In the Custom menu, select [Settings] ▶ [Phone settings] ▶ [Other settings] ▶ [International Roam.] ▶ [Network search mode].
- 2 Select [Auto] ▶ [Yes].
 - To manually switch telecommunications carriers: Select [Manual] ▶ select a telecommunications carrier ▶ [OK].
 - To re-search for the host network: Select [Network re-search].

-6-

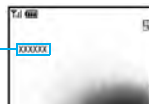
Setting a telecommunications carrier to preferentially connect to

- 1 In the Custom menu, select [Settings] ▶ [Phone settings] ▶ [Other settings] ▶ [International Roam.] ▶ [Network search mode] ▶ [PLMN setting] ▶ select the number of the priority order ▶ [OK].
- 2 Select [PLMN manual select] ▶ enter a country code (MCC) ▶ [OK] ▶ enter a network code (MNC) ▶ [OK] ▶ select a communication method ▶ [OK] ▶ [Yes].
 - To save from a telecommunications carrier list: Select [UPLMN by list] ▶ select a telecommunications carrier ▶ [OK] ▶ select a communication method ▶ [OK] ▶ [Yes].
 - To save the telecommunications carrier currently connected to: Select [Set VPLMN to PLMN] ▶ [Yes].
 - To change the priority: Select [Change priority] ▶ select a destination ▶ [OK] ▶ [Yes].

-7-

Displaying a telecommunications carrier name in stand-by

Telecommunications carrier name



- 1 In the Custom menu, select [Settings] ▶ [Phone settings] ▶ [Other settings] ▶ [International Roam.] ▶ [Operator name disp] ▶ [Display on] ▶ [Yes].

-8-

Setting after homecoming

If Network search mode is set to [Auto], reset Network search mode to the FOMA network (DoCoMo) automatically when the power is turned on after homecoming.

Setting to the FOMA network (DoCoMo) manually

- 1 In the Custom menu, select [Settings] ▶ [Phone settings] ▶ [Other settings] ▶ [International Roam.] ▶ [Network search mode] ▶ [Manual] ▶ [DoCoMo].

-9-

Making calls

Making a call outside your country of stay (including Japan)

Using + to make an international call

- 1 In stand-by, press [0] (for 1+ seconds) ▶ enter the country code, area code (city code) and other party's phone number ▶ [Phone]/[V] (V.phone).
 - When the area code (city code) begins with 0, omit the 0 when dialing. However, include 0 when making a call to landline phones in some countries or regions such as Italy.

Making an international call outside your country of stay using country code conversion

0 at the beginning of a phone number is automatically converted to the country code set in Country code conversion.

Example: Make a call from the phonebook

- 1 In stand-by, press [Phone] ▶ select the other party ▶ [Phone]/[V] (V.phone) ▶ [Call].

-10-

Making an international call

Save a country number using Set country code to select a country code before making an international call. The following operation is available overseas only.

- 1 In stand-by, enter a phone number ▶ [Add prefix setting] ▶ [International Call] ▶ select the country code ▶ [Phone]/[V] (V.phone).

Making a call in your country of stay

- 1 In stand-by, enter a phone number ▶ [Phone]/[V] (V.phone).

Making a call to the phone in your country of stay using the phonebook

- 1 In stand-by, press [Phone] ▶ select the other party ▶ [Phone]/[V] (V.phone) ▶ [Original number].

Making a call to a WORLD WING subscriber overseas

Even when making a call to the phone in your country of stay, make an international call to Japan if the call recipient is a "WORLD WING" subscriber overseas.

-11-

- In stand-by, press **0** (for 1+ seconds) **8 1** **>** enter the other party's mobile phone number excluding the first **0** **>** **[Phone]/** **[V.phone]**.

Receiving calls

- Press **[]** to answer an incoming call.

■ Having calls made to your FOMA terminal from Japan

Enter the phone number in the same way as it is entered in Japan and make a call.

■ Having calls made to your FOMA terminal from countries other than Japan

Enter *international access code of the country of the caller-81-user's phone number* excluding the first **0** and make a call.

-12-

Setting the roaming guidance

Make this setting while still in Japan

※ In the confirmation screen, select [Yes].

- In the Custom menu, select **[Settings]** **>** **[Other NW Services]** **>** **[Roaming guidance]**.
- Select **[Activate]**.
 - To deactivate: Select [Deactivate].
 - To check settings: Select [Status request].

-13-

Call barring

● Depending on the overseas telecommunications carrier, the setting cannot be made.

- In the Custom menu, select **[Settings]** **>** **[Phone settings]** **>** **[Other settings]** **>** **[International Roam.]** **>** **[Call barring]**.
- Select **[Activate]** **>** **[Yes]** **>** select the barring method **>** **[]** **>** enter the network security code **>** **[]**.
 - To deactivate: Select [Deactivate] **>** **[Yes]** **>** enter the network security code **>** **[]**.
 - To check settings: Select [Status request].

-14-

Using network service

- To use network service overseas, set Remote control to "Activate".
- ※ In the confirmation screen, select [Yes].
- ※ Operate according to the voice guidance.

Voice Mail (Int.)

- In the Custom menu, select **[Settings]** **>** **[Phone settings]** **>** **[Other settings]** **>** **[International Roam.]** **>** **[Voice Mail(Int.)]**.
- Select **[Activate Voice Mail]**.
 - To deactivate: Select [Deactivate].
 - To play messages: Select [Play Messages].
 - To set the service: Select [Voice Mail settings].

-15-

Call Forward (Int.)

- In the Custom menu, select **[Settings]** **>** **[Phone settings]** **>** **[Other settings]** **>** **[International Roam.]** **>** **[Call Forward (Int.)]**.
- Select **[Activate]**.
 - To deactivate: Select [Deactivate].
 - To set the service: Select [Settings].

Roaming guidance (Int.)

- In the Custom menu, select **[Settings]** **>** **[Phone settings]** **>** **[Other settings]** **>** **[International Roam.]** **>** **[Roam. guidance(Int.)]**.

-16-

Country codes of major countries

The following shows "Country code" used when making international calls or setting International dial assist.

(As of April 2008)

| Country/Region | Code | Country/Region | Code |
|----------------|------|----------------|------|
| Australia | 61 | Hong Kong | 852 |
| Austria | 43 | Hungary | 36 |
| Belgium | 32 | India | 91 |
| Brazil | 55 | Indonesia | 62 |
| Canada | 1 | Italy | 39 |
| China | 86 | Japan | 81 |
| Czech | 420 | Macau | 853 |
| Egypt | 20 | Malaysia | 60 |
| Fiji | 679 | Maldives | 960 |
| Finland | 358 | Netherlands | 31 |
| France | 33 | New Caledonia | 687 |
| Germany | 49 | New Zealand | 64 |
| Greece | 30 | Norway | 47 |

-17-

| Country/Region | Code | Country/Region | Code |
|----------------|------|------------------------------|------|
| Peru | 51 | Tahiti (French Polynesia) | 689 |
| Philippines | 63 | | |
| Russia | 7 | Taiwan | 886 |
| Singapore | 65 | Thailand | 66 |
| South Korea | 82 | Turkey | 90 |
| Spain | 34 | U.K. | 44 |
| Sweden | 46 | U.S.A. | 1 |
| Switzerland | 41 | Vietnam | 84 |

※ For other country codes and details, refer to the DoCoMo "International Services website".

-18-

International call access codes of major countries (Table 1)

The following shows the International call access codes of major countries.

(As of March 2008)

| Country/Region | Code | Country/Region | Code |
|----------------|---------------|----------------|------|
| Australia | 0011 | Hungary | 00 |
| Belgium | 00 | India | 00 |
| Brazil | 0021/ 0014 | Indonesia | 001 |
| | | Ireland | 00 |
| Canada | 011 | Italy | 00 |
| China | 00 | Luxemburg | 00 |
| Czech | 00 | Macau | 00 |
| Denmark | 00 | Malaysia | 00 |
| Finland | 00 | Monaco | 00 |
| France | 00 | Netherlands | 00 |
| Germany | 00 | New Zealand | 00 |
| Greece | 00 | Norway | 00 |
| Hong Kong | 001 | Philippines | 00 |

-19-

| Country/Region | Code | Country/Region | Code |
|----------------|------|----------------|------|
| Poland | 00 | Taiwan | 002 |
| Portugal | 00 | Thailand | 001 |
| Russia | 810 | Turkey | 00 |
| Singapore | 001 | U.A.E. | 00 |
| South Korea | 001 | U.K. | 00 |
| Spain | 00 | U.S.A. | 011 |
| Sweden | 00 | Vietnam | 00 |
| Switzerland | 00 | | |

-20-

International prefix number for the universal number (Table 2)

The following shows the International prefix number for the universal number of each country.

(As of March 2008)

| Country/Region | Code | Country/Region | Code |
|----------------|------|----------------|------|
| Argentina | 00 | Hong Kong | 001 |
| Australia | 0011 | Hungary | 00 |
| Austria | 00 | Ireland | 00 |
| Belgium | 00 | Israel | 014 |
| Brazil | 0021 | Italy | 00 |
| Bulgaria | 00 | Luxemburg | 00 |
| Canada | 011 | Malaysia | 00 |
| China | 00 | Netherlands | 00 |
| Columbia | 009 | New Zealand | 00 |
| Denmark | 00 | Norway | 00 |
| Finland | 990 | Peru | 00 |
| France | 00 | Philippines | 00 |
| Germany | 00 | Portugal | 00 |

-21-

| Country/Region | Code | Country/Region | Code |
|----------------|------|----------------|------|
| Singapore | 001 | Switzerland | 00 |
| South Africa | 09 | Taiwan | 00 |
| South Korea | 001 | Thailand | 001 |
| Spain | 00 | U.K. | 00 |
| Sweden | 00 | U.S.A. | 011 |

-22-

About inquiries overseas

For lost, stolen, and cost settlement, or malfunction of the FOMA terminal overseas, refer to "Loss or theft of FOMA terminal or payment of cumulative cost overseas" on the cover of Quick Manual "Overseas Use" or "Failures encountered overseas" on P.1.

- Add the "International call access code" or "International prefix number for the universal number" that is assigned to your country of stay, to the head of your phone number for inquiries.

-23-

Access DoCoMo e-site for procedures to change your address or billing plan and for request of information materials.

From i-mode iMenu ▶ 料金 & お申込・設定 (Charges & Applications/Setting) ▶ 各種手続き (ドコモeサイト) (Application procedure (DoCoMo e-site))
Packet communication charges free

From a PC My DoCoMo (<http://www.mydocomo.com/>) ▶ 各種手続き (ドコモeサイト) (Application procedure (DoCoMo e-site))

- ※ You will need your "Network Security Code" to access e-site from i-mode.
- ※ No packet communication charges are incurred when accessing e-site from i-mode. Accessing from overseas will incur charges.
- ※ You will need your "DoCoMo ID/Password" to access e-site from PC.
- ※ If you do not have or you have forgotten your "Network Security Code" or "DoCoMo ID/Password", contact the number listed in General Inquiries on the back of this manual.
- ※ DoCoMo e-site may not be available depending upon the content of your subscription.
- ※ You may not be able to access some e-site services due to system maintenance, etc.

Please follow proper etiquette

When using your FOMA terminal, please be considerate of those around you.

Turn off your FOMA terminal in the following places

■ When in an area where use is prohibited

There are places where the use of mobile phones is prohibited. Be sure to turn off your FOMA terminal in the following places.

★On an aircraft ★In a hospital

- ※ There are people outside hospital wards who also use electric medical equipment.
Please make sure that your FOMA terminal is turned off in the lobby and waiting room.

■ While driving

Using a mobile phone in hand while driving is regarded as a punishable act.

- ※ If there is no choice but to receive a call, use Hands-free and tell the caller that you will "call back", and then pull over to a safe place to make a call.

■ When in crowded places such as rush-hour trains in case somebody nearby is using an implanted cardiac pacemaker or implanted cardioverter-defibrillator

Your FOMA terminal may affect the operation of such equipment.

■ When in public places such as theaters, movie theaters, or museums

Use of your FOMA terminal in quiet public places will annoy others.

Be careful of where you use your FOMA terminal and the volume of your voice and the ring tone

- When using your FOMA terminal in a restaurant or a hotel lobby, lower your voice.
- In crowded places, be careful not to obstruct other pedestrians.

Be considerate of the privacy of the individuals around you



Please be considerate of the privacy of individuals around you when taking and sending images using a camera-enabled mobile phones.

The following functions will help you to keep your manners in public There are useful functions you can use to set your FOMA terminal not to answer incoming calls, and to silence all sounds.

- **Manner mode** (☎ P. 113)/**Original manner mode** (☎ P. 114)
Silences the Key/Standby i-motion sound and all the sounds from the FOMA terminal, and Record message is set (Manner mode). When in the Manner mode, automatically set functions (Record message, Vibrator, Mic sensitivity up, Ring tone, Mail ring tone, alarm tone, Key/Standby i-motion sound and Low battery alarm) can be set to ON (enable)/OFF (disable) (Original manner mode).
- **Public mode (Drive mode)** (☎ P. 74)
The caller hears a guidance message that informs the receiver is driving and unable to answer. The call then disconnects. Your FOMA terminal does not sound even when it receives calls, so you can drive safely.
- **Vibration mode** (☎ P. 111)
Notifies incoming calls by vibration.
- **Record message** (☎ P. 77)
When you are unable to take a call, the Record message function records the caller's message.
※ You can also use optional services such as Voice Mail Service (☎ P. 426) and Call Forwarding Service (☎ P. 429).