

Safety Precautions







Read safety precautions before using handset.

- Observe precautions to avoid injury to self or others, or damage to property.
- Disney Mobile is not liable for any damages resulting from use of this product.

These labels indicate the degree of risk from improper use:

 DANGER	Great risk of death or serious injury from improper use
 WARNING	Risk of death or serious injury from improper use
 CAUTION	Risk of serious injury or damage to property from improper use

These symbols indicate prohibited or compulsory actions:

	Prohibited Actions
Prohibited	
	Disassembly prohibited
Do Not Disassemble	
	Exposure to liquids prohibited
Avoid Liquids Or Moisture	
	Use with wet hands prohibited
Do Not Use Wet Hands	
	Compulsory Actions
Compulsory	
	Unplug Charger from outlet
Disconnect Power Source	

DANGER

Handset, Battery & Charger

Use specified battery, Charger and Desktop Holder only.

Non-specified equipment use may cause malfunctions, electric shock or fire due to battery leakage, overheating or bursting.



Compulsory

Do not short-circuit Charging Terminals.

Keep metal objects away from Charging Terminals. Keep handset away from jewelry. Battery may leak, overheat, burst or ignite causing injury. Use a case to carry battery.



Prohibited

Do not place handset or accessories in ovens, microwave ovens or other cooking appliances.

Do not place battery, handset, Charger or Desktop Holder in ovens, microwave ovens, etc. to dry it or for any other purpose. Battery or other parts may leak, burst, overheat or ignite; may cause malfunction, accident or injury.



Prohibited

Battery

Prevent injury from battery leakage, breakage or fire. Do not:

- Heat or dispose of battery in fire
- Open/modify/disassemble battery
- Damage or solder battery
- Use a damaged or warped battery
- Use non-specified charger
- Force battery into handset
- Charge battery near fire or sources of heat; or expose it to extreme heat
- Use battery for other equipment
- Use non-specified battery



Prohibited

If battery fluid gets in eyes, do not rub; rinse with water and consult a doctor immediately.

Eyes may be severely damaged.



Compulsory

Do not expose battery to liquids.

Battery may leak, burst, overheat or ignite.



Avoid Liquids Or Moisture

Desktop Holder

Do not use supplied Desktop Holder for other equipment.

Supplied Desktop Holder is designed exclusively for DM003SH. Do not use for other devices; may cause overheating, fire, electric shock or malfunction.



Prohibited

WARNING

Handset, Battery & Charger

Do not insert foreign objects into the handset, Charger or Desktop Holder.

Do not insert metal or flammable objects into handset, Charger or Desktop Holder; may cause fire or electric shock. Keep out of children's reach.



Prohibited

Keep handset away from liquid-filled containers.

Keep handset, Charger and Desktop Holder away from chemicals or liquids; fire or electric shock may result.



Prohibited

Do not disassemble or modify handset or related hardware.

- Do not open handset, Charger or Desktop Holder; may cause electric shock or injury. Contact Customer Assistance for repairs.
- Do not modify handset, Charger or Desktop Holder; fire or electric shock may result.



Do Not Disassemble

Do not use Mobile Light near people's faces.

Eyesight may be temporarily affected leading to accidents.

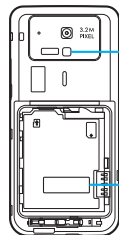
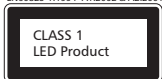


Prohibited

CAUTION:

Use of controls, adjustments or procedures not specified here may result in harmful LED radiation. Mobile Light LED emission level is harmful to eyes; do not attempt to disassemble the cabinet. Service is limited to qualified service outlets only.

EN60825-1:1994 A1:2002 & A2:2001



Mobile Light

CAUTION-CLASS 1M
LED RADIATION WHEN OPEN
DO NOT VIEW DIRECTLY WITH
OPTICAL INSTRUMENTS

■ Mobile Light LED Properties

- Emission Duration: Continuous
- Wavelength
White: 400 - 700 nm
- Maximum Emission Output
White: 320 μ W (1.2 mW inside handset)

If an abnormality occurs, or water/foreign matter is inside handset:

If handset emits an unusual sound, smoke or odor, or if water or foreign matter is inside it, discontinue use; may cause fire or electric shock. Turn off handset, remove battery and unplug AC Charger; contact Customer Assistance.



Disconnect
Power Source

Keep handset off and Charger disconnected near gas stations or places with fire/explosion risk. Handset use near petrochemicals or other flammables may cause fire/explosion; turn handset off before using Osaifu-Keitai® at gas stations (cancel IC Card Lock beforehand).



Compulsory

Do not subject handset, Charger or Desktop Holder to strong shocks or impacts.

- Avoid strong shocks to AC Charger while it is plugged into the outlet; may cause malfunction or injury.
- Strong shocks or impacts to handset, Charger or Desktop Holder may cause malfunction or injury. Should handset be damaged, remove battery then contact Customer Assistance. Discontinue handset use; may cause fire, electric shock or injury.



Prohibited

Avoid extreme temperatures.

Do not expose handset or accessories to hot air from dryers, etc. to dry them or for any other purpose. Avoid sauna and hot water. Battery, handset, Charger or Desktop Holder may leak, burst, overheat or ignite; may cause malfunction, accident or injury.



Prohibited

Handset

Take measures to prevent accidents.

- Do not use handset (including TV) while driving; park beforehand. Phone use while driving is prohibited by the Road Traffic Law (revised November 1, 2004).
- Do not use Headphones while driving or cycling. Accidents may result.
- Moderate volume outside, especially near road/rail crossings, etc. to avoid accidents.



Prohibited

Do not swing handset by strap.

May result in injury or breakage.



Prohibited

Turn handset power off before boarding aircraft.

Using wireless devices aboard aircraft may cause electronic malfunctions or endanger aircraft operation.



Compulsory

Adjust vibration and ringtone settings:

Users with a heart condition/ pacemaker/defibrillator should adjust handset settings accordingly.



Compulsory

During thunderstorms, turn power off; find cover.

There is a risk of lightning strike or electric shock.



Compulsory

To maintain water resistance, close Battery Cover and Port Covers firmly. Water may seep inside handset when there is a gap between cover and base, resulting in malfunction.



Compulsory

Do not open Battery/Port Cover while handset is wet; water may seep inside handset, resulting in malfunction.

Handset is resistant to fresh/tap water between 5°C - 35°C. Do not subject handset to sea/spa/bath/pool water, hot water, soap, bath powder/oil or drinking water.



Prohibited

Do not subject handset to strong water jet or prolonged water immersion.

Handset is not resistant to water pressure. Do not subject it to jets of water or water immersion beyond the conditions specified in IPX5/IPX7. If handset becomes wet, wipe it with a dry cloth. Using wet handset may cause overheating, fire, electric shock or malfunction.



Compulsory

Charger & Desktop Holder

Use only the specified voltage.

Non-specified voltages may cause fire or electric shock.



Prohibited

- **AC Charger: AC 100V-240V Input**
 - Disney Mobile is not liable for problems resulting from charging battery abroad.

Do not use power adapters.

Using AC Charger with step-up/step-down transformer may cause fire, electric shock or damage.



Prohibited

Charger care

- Do not touch with wet hands. Electric shock may occur.
- Pull AC Charger straight out to unplug it; may cause malfunction or injury.
- Do not use multiple cords in one outlet; may cause excess heat/fire.
- Do not bend, twist, pull or set objects on cord. Exposed wire may cause fire or electric shock.



Do Not Use Wet Hands



Prohibited

Do not short-circuit Charger terminals.

May cause overheating, fire or electric shock. Keep metal away from terminals.



Prohibited

Damaged AC Charger cord:

May cause fire or electric shock; discontinue use and purchase a new Charger.



Compulsory

During thunderstorms:

Unplug AC Charger to avoid damage, fire or electric shock.



Disconnect Power Source

Charger/Desktop Holder use and children:

May cause electric shock/injury; keep out of reach.



Compulsory

Do not use Desktop Holder inside vehicles.

Extreme temperature or vibration may cause fire or damage handset, etc.



Prohibited

Do not use Desktop Holder in bath/shower rooms or restrooms.

Desktop Holder is not water-proof. Avoid exposure to liquids and high humidity (e.g., precipitation, bath/shower room, restroom, etc.); may cause fire, electric shock or damage.



Prohibited

Battery

- If battery does not charge properly, stop trying. Battery may overheat, burst or ignite.
- At signs of a battery leak, avoid fire sources. It may catch fire or burst.



Compulsory

If there is abnormal odor, excessive heat, discoloration or distortion, remove battery from handset. It may leak, overheat or explode.



Compulsory

Handset Use & Electronic Medical Equipment

This section is based on "Guidelines on the Use of Radio Communications Equipment such as Cellular Telephones and Safeguards for Electronic Medical Equipment" (Electromagnetic Compatibility Conference, April 1997) and "Report of Investigation of the Effects of Radio Waves on Medical Equipment, etc." (Association of Radio Industries and Businesses, March 2001).

Persons with implanted pacemaker/defibrillator should keep handset more than 22 cm away.

Radio waves can interfere with implanted pacemakers or defibrillators causing such devices to malfunction.



Compulsory

Turn handset off in crowds or trains where persons with implanted pacemaker/defibrillator may be near.

Radio waves can interfere with implanted pacemakers or defibrillators causing such devices to malfunction.



Compulsory

Observe these rules inside medical facilities:

- Do not enter an operating room or an Intensive or Coronary Care Unit while carrying a handset.
- Keep handset off in hospitals, including lobbies.
- Obey medical facility rules on mobile phone use.



Compulsory

Consult electronic medical equipment vendor on radio wave effects.



Compulsory



CAUTION

Handset, Battery & Charger

Handset care

- Place handset on stable surfaces to avoid malfunction or injury.
- Keep handset away from oily smoke or steam. Fire or accidents may result.
- Cold air from air conditioners may condense, resulting in leakage or burnout.
- Keep handset away from heat/direct sunlight (e.g., inside vehicles, etc.). Warping, discoloration or fire may occur. Battery shape may be affected.
- Keep handset out of extremely cold places to avoid malfunction or accidents.
- Keep handset away from fire sources to avoid malfunction or accidents.



Usage environment

- Excessive dust may prevent heat release and cause burnout or fire.
- Avoid using handset on the beach. Sand may cause malfunction or accidents.
- Keep handset away from credit cards, telephone cards, etc. to avoid data loss.



Handset

Handset temperature

Handset may become hot while in use. Avoid prolonged contact with skin, especially at high temperature. May cause burn injuries.



Avoid leaving handset in extreme heat (inside vehicles, etc.).

Hot handset may lead to burn injuries.



Prohibited

Volume settings

Moderate handset volume; excessive volume may damage ears or hearing.



Inside vehicles

Handset use may cause electronic equipment to malfunction.



If you experience any skin irritation associated with handset use, discontinue handset use and consult a doctor.

Metal and other materials may cause skin irritation, rashes, or itchiness depending on your physical condition.



Compulsory

Do not look into Infrared Port during infrared transmissions.

Eyesight may be affected.



Prohibited

Charger & Desktop Holder

AC Charger cord

- Grasp plug (not cord) to disconnect AC Charger. May cause fire/electric shock.
- Keep cord away from heaters. Exposed wire may cause fire or electric shock.
- Stop use if plug is hot or improperly connected. May cause fire/electric shock.



Prohibited



Compulsory

Always charge handset in a well-ventilated area.

Avoid covering/wrapping Charger and Desktop Holder; may cause damage/fire.



Prohibited

During periods of disuse

Always unplug AC Charger after use.



Disconnect
Power Source

Handset maintenance

Always disconnect AC Charger when cleaning handset.



Disconnect
Power Source

Do not touch Desktop Holder while in use.

May cause burn injuries.



Prohibited

Battery

Do not throw or abuse battery. Battery may overheat, burst or ignite.



Prohibited

Do not leave battery in direct sunlight or inside a closed vehicle; may reduce battery performance or overheat. An overheated battery may cause fire.



Prohibited

If battery fluid contacts skin or clothes, rinse with clean water immediately.



Compulsory

Do not dispose of an exhausted battery with ordinary refuse; always tape over battery terminals before disposal. Take battery to a SoffBank Shop, or follow the local disposal regulations.



Prohibited

Keep battery out of children's reach.



Compulsory

- Charge battery in ambient temperatures between 5°C and 35°C; outside this range, battery may leak/overheat and performance may deteriorate.
- If your child is using handset, explain all instructions and supervise usage.
- If there is abnormal odor or excessive heat, stop using battery and call Customer Assistance.
- Charge battery at least once every six months; an uncharged battery may become unusable.



General Notes

General Use

- Disney Mobile is not liable for any damages resulting from accidental loss/alteration of files saved on handset/Memory Card. Keep separate copies of Phone Book entries, etc.
- Handset transmissions may be disrupted inside buildings, tunnels or underground, or when moving into/out of such places.
- Use handset without disturbing others.
- Handsets are radios as stipulated by the Radio Law. Under the Radio Law, handsets must be submitted for inspection upon request.
- Handset use near landlines, TVs or radios may cause interference.
- **Beware of eavesdropping.**
Because this service is completely digital, the possibility of signal interception is greatly reduced. However, some transmissions may be overheard.

Eavesdropping

Deliberate/accidental interception of communications constitutes eavesdropping.

- An export license may be required to carry the handset into other countries if it is to be used by or transferred to another person. However, no such license is required when you take the handset abroad for personal use on a vacation or business trip and then bring it back. Export control regulations in the United States provide that an export license granted by the US government is required to carry the handset into Cuba, Iran, North Korea, Sudan or Syria.
- Should interference occur between handset and a hearing aid, consult the manufacturer or distributor of the hearing aid.

Inside Vehicles

- Never use handset while driving.
- Do not park illegally to use handset.
- Handset use may affect a vehicle's electronic equipment.

Aboard Aircraft

Never use handset aboard aircraft (keep power off).
Handset use may impair aircraft operation.

Handset Care

- If handset is left with no battery or an exhausted one, data may be altered/lost. Disney Mobile is not liable for any resulting damages.
- Use handset between 5°C - 35°C (35% - 85% humidity).
- Avoid extreme temperatures and direct sunlight.
- Exposing lens to direct sunlight may damage color filter and affect image color.
- Clean handset with dry, soft cloth. Using alcohol, thinner, etc. may damage it.
- Avoid scratching handset Display.
- When closing handset, keep fingers, straps, etc. outside to avoid injury or damaging the Display.
- Avoid heavy objects or excessive pressure. May cause malfunction or injury.
 - Do not sit on handset in back pants pocket.
 - Do not place heavy objects on handset inside handbags, packs, etc.
- Connect only specified products to Headphone Port. Other devices may malfunction or cause damage.
- Always turn off handset before removing battery.

Function Usage Limits

These functions are disabled after handset upgrade/replacement or service cancellation: Camera; Media Player; S! Applications; TV. After a period of disuse, these functions may be unusable; retrieve Network Information to restore usability.

Mobile Camera

- Mind your manners when using handset camera.
- Test the camera before capturing/recording special moments (e.g., weddings, etc.).
- Do not use handset camera in places where photography or videography is prohibited.

Portrait Rights

Portrait rights protect individuals' right to refuse to be photographed or to refuse unauthorized publication/use of their photographs. Portrait rights consist of the right to privacy, which is applicable to all persons, and the right to publicity, which protects the interests of celebrities. Therefore, photographing others including celebrities and publicizing/distributing their photographs without permission is illegal; use handset camera responsibly.

Copyrights

Copyright laws protect sounds, images, computer programs, databases, other materials and copyright holders. Duplicated material is limited to private use only. Use of materials beyond this limit or without permission of copyright holders may constitute copyright infringement, and be subject to criminal punishment. Comply with copyright laws when using images captured with handset camera.

Electromagnetic Waves

For body-worn operation, this phone has been tested and meets RF exposure guidelines when used with accessories containing no metal, that position handset a minimum of 15 mm from the body. Use of other accessories may not ensure compliance with RF exposure guidelines.

FCC Notice

- This device complies with part 15 of the FCC Rules. Operation is subject to the following two conditions:
(1) This device may not cause harmful interference, and (2) this device must accept any interference received, including interference that may cause undesired operation.
- Changes or modifications not expressly approved by the manufacturer responsible for compliance could void the user's authority to operate the equipment.

Information to User

This equipment has been tested and found to comply with the limits of a Class B digital device, pursuant to Part 15 of the FCC Rules. These limits are designed to provide reasonable protection against harmful interference in a residential installation. This equipment generates, uses and can radiate radio frequency energy and, if not installed and used in accordance with the instructions, may cause harmful interference to radio communications. However, there is no guarantee that

interference will not occur in a particular installation; if this equipment does cause harmful interference to radio or television reception, which can be determined by turning the equipment off and on, the user is encouraged to try to correct the interference by one or more of the following measures:

1. Reorient/relocate the receiving antenna.
2. Increase the separation between the equipment and receiver.
3. Connect the equipment into an outlet on a circuit different from that to which the receiver is connected.
4. Consult the dealer or an experienced radio/TV technician for help.

FCC RF Exposure Information

Your handset is a radio transmitter and receiver. It is designed and manufactured not to exceed the emission limits for exposure to radio frequency (RF) energy set by the Federal Communications Commission of the U.S. Government.

The guidelines are based on standards that were developed by independent scientific organizations through periodic and thorough evaluation of scientific studies. The standards include a substantial safety margin designed to assure the safety of all persons, regardless of age and health.

The exposure standard for wireless handsets employs a unit of measurement known as the Specific Absorption Rate, or SAR. The SAR limit set by the FCC is 1.6 W/kg.

Highest SAR value:

Model	FCC ID	At the Ear	On the Body
DM003SH	APYHRO00079	0.447 W/kg	0.312 W/kg

This device was tested for typical body-worn operations with the back of the handset kept 1.5 cm from the body. To maintain compliance with FCC RF exposure requirements, use accessories that maintain a 1.5 cm separation distance between the user's body and the back of the handset. The use of beltclips, holsters and similar accessories should not contain metallic components in its assembly. The use of accessories that do not satisfy these requirements may not comply with FCC RF exposure requirements, and should be avoided.

The FCC has granted an Equipment Authorization for this model handset with all reported SAR levels evaluated as in compliance with the FCC RF emission guidelines. SAR information on this model handset is on file with the FCC and can be found at <https://fjallfoss.fcc.gov/oetcf/eas/reports/GenericSearch.cfm> under the Display Grant section after searching on the corresponding FCC ID (see table above). Additional information on Specific Absorption Rates (SAR) can be found on the Cellular Telecommunications & Internet Association (CTIA) Website at <http://www.phonefacts.net>.

European RF Exposure Information

Your mobile device is a radio transmitter and receiver. It is designed not to exceed the limits for exposure to radio waves recommended by international guidelines. These guidelines were developed by the independent scientific organization ICNIRP and include safety margins designed to assure the protection of all persons, regardless of age and health. The guidelines use a unit of measurement known as the Specific Absorption Rate, or SAR. The SAR limit for mobile devices is 2 W/kg. As mobile devices offer a range of functions, they can be used in other positions, such as on the body as described in this user guide*.

Highest SAR value:

Model	At the Ear**	On the Body
DM003SH	0.897 W/kg	0.688 W/kg

As SAR is measured utilizing the device's highest transmitting power the actual SAR of this device while operating is typically below that indicated above. This is due to automatic changes to the power level of the device to ensure it only uses the minimum level required to reach the Network.

The World Health Organization has stated that present scientific information does not indicate the need for any special precautions for the use of mobile devices. They note that if you want to reduce your exposure then you can do so by limiting the length of calls or using a handsfree device to keep the mobile phone away from the head and body.

*Please see Electromagnetic Waves on P.xxx for important notes regarding body-worn operation.

**Measured in accordance with international guidelines for testing.

Declaration of Conformity

CE 0168

Hereby, Sharp Telecommunications of Europe Ltd, declares that DM003SH is in compliance with the essential requirements and other relevant provisions of Directive 1999/5/EC. A copy of the original declaration of conformity for each model can be found at the following Internet address: <http://www.sharp.co.jp/k-tai/>

Water Resistance

DM003SH Water Resistance

DM003SH complies with IPX5 and IPX7 (JIS IP Codes) water protection standards. (Tested by Disney Mobile.)

- Handset is water-proof with Port Covers and Battery Cover closed. Water may seep inside handset when there is debris (hair, sand, fiber, etc.) between cover and base.
- Handset is resistant to fresh/tap water between 5°C - 35°C.
- Malfunction resulting from misuse is not covered by the warranty.

IPX5 & IPX7

- IPX5 compliant means that this handset continues to function as a phone after being subjected to a water jet (approximately 12.5 liters/min.) discharged from a nozzle (inner diameter: 6.3 mm), from all directions (approximately 3 m from handset) for 3 minutes or more.
- IPX7 compliant means that this handset continues to function as a phone and no water seeps inside after being gently lowered into a tank filled with still tap water (at room temperature) to the depth of 1 m, and immersed at the bottom for approximately 30 minutes.

Precautions

- Do not subject handset to soap, detergent, bath powder/oil, sea/pool/spa water, hot water, sand, dirt, etc.
- Do not open/close Battery/Port Cover with wet hands or while handset is wet.
- Do not soak handset in bath or pool; never use it in water (including opening/closing of handset and pressing keys).
- Avoid high-pressure water/shower (over 6 liters/min.).
- Do not expose handset to extreme humidity for long periods; avoid prolonged use in bath/shower rooms.
- Do not use in saunas. Avoid hot air from dryers, etc.
- Avoid extreme temperatures (e.g., near stoves, inside refrigerators, etc.).
- Volume may be low when Microphone/Earpiece/Speaker is wet; dry handset before use.
- Battery, Desktop Holder and optional accessories are not water-proof.
- Do not subject handset to strong shocks or impacts, and do not poke Microphone, Earpiece, Speaker, etc. with a cotton swab or sharp object; water resistance may be affected.
- Avoid placing handset directly on sand. Sand may penetrate Earpiece, Speaker, etc., resulting in low volume.
- Do not move handset directly from a cold place to a warm humid place; condensation may occur. Should this happen, dry handset naturally at room temperature.
- DM003SH does not float on water.
- Keep handset out of heavy rain.
- Damaged Battery/Port Cover affects water resistance; contact a SoftBank Shop.

Charging Precautions

- Battery, Desktop Holder and optional accessories are not water-proof. Avoid exposure to liquids and high humidity (e.g., precipitation, bath/shower room, restroom, etc.); may cause fire, electric shock or damage.
- Never charge battery while handset is wet; may cause fire or damage due to electric shock or short-circuit.
- Close Port Cover firmly after charging via External Device Port. Use Desktop Holder to prevent water seepage via External Device Port.
- Do not touch Desktop Holder or Charger with wet hands. Electric shock may occur.
- Do not use Desktop Holder or Charger in rooms in which water is regularly in use (kitchen, bath/shower room, etc.); may cause fire or electric shock.

Gasket Care & Maintenance

Proper care of the rubber seals around Port Covers and Battery Cover is crucial for continued handset water resistance.

- Do not remove or damage gaskets.
- Take care not to pinch gasket when closing Port/Battery Cover; may damage gasket and affect water resistance.
- Do not insert sharp objects through Port/Battery Cover gaps; may damage gasket and affect water resistance.
- To maintain water resistance, replace gaskets every two years regardless of their condition.
- For gasket replacements, contact a SoftBank Shop.
- Damaged Port Cover affects water resistance; contact a SoftBank Shop.
- If Battery Cover is damaged, replace it with a new one. Use of damaged cover may cause electric shock, battery corrosion, etc. due to water seepage.

Washing Handset

Holding handset approximately 10 cm below faucet or shower head, wash with low-pressure tap water (6 liters/min. or lower) between 5°C - 35°C. Wash with your hands, taking care not to open the covers; do not use a brush or sponge. Dry handset before use.

- Before washing handset, make sure that Battery Cover and Port Covers are closed firmly.
- Do not use a washing machine or ultrasonic cleaner.
- Do not place handset in a microwave oven to dry it. Battery/handset may leak, burst, overheat or ignite; may cause malfunction, accident or injury.
- Do not dry handset by exposing it to extreme heat (e.g., hot air from dryers, etc.); may cause warping, discoloration or damage.

Drying Handset

Dry these parts/areas after washing handset:

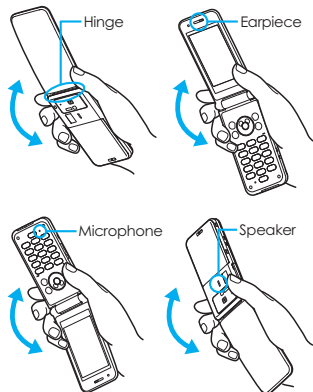
Hinge

Earpiece

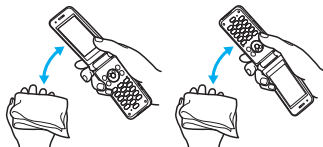
Microphone

Speaker

- 1 Wipe handset surface with dry cloth
- 2 Holding hinge firmly by its sides, shake handset approximately 20 times



- 3 Pat with dry cloth to remove moisture from grooves



- 4 Leave handset on dry cloth for approximately 2 - 3 hours at room temperature

Do Not Use Wet Handset

- Voice quality may be affected, or moisture may transfer to clothes, bag, etc.
- Water may short-circuit External Device Port.
- Water may freeze in cold places, resulting in malfunction.