

Missed Call Notice

Using Missed Call Notice function during roaming

When the FOMA terminal is outside the service area, turned off, or a received call cannot be answered during International roaming, the information of the call (Received date and time or caller ID) is notified with SMS.

- 1 In the Custom menu, select [Settings] ▶ [Phone settings] ▶ [Other settings] ▶ [International Roam.] ▶ [Missed Call Notice].
- 2 Select an item.
 - ◆ Select [Activate] ▶ [Yes].
 - ◆ Select [Deactivate] ▶ [Yes].
 - ◆ Select [Check setting].

Int'l services

Using network services during roaming

Use network services such as Voice Mail and Call Forwarding from overseas.

- Voice Mail and Call Forwarding subscription are required to use Voice Mail (Int.) and Call Forward (Int.).
- To use network services overseas, set Remote Control (☎ P. 430) to "Activate" in advance.
- If operated from overseas, international call charges for your country of stay are incurred.

- 1 In the Custom menu, select [Settings] ▶ [Phone settings] ▶ [Other settings] ▶ [International Roam.].
- 2 Select an item.
 - ◆ Select [Voice Mail(Int.)] ▶ select an item of Voice Mail Service ▶ ⊖.
 - ◆ Select [Call Forward (Int.)] ▶ select an item of Call Forwarding Service ▶ ⊖.
 - ◆ Select [Remote access (Int.)].
 - ◆ Select [Caller ID req (Int.)].
 - ◆ Select [Roam. guidance(Int.)].
 - ◆ Select [MissedCallNoticeInt.].
- 3 Select [Yes] ▶ operate according to the voice guidance.

Introduction of options and related devices

Combine the FOMA terminal with various optional accessories (sold separately) for expanded personal and business use.

Some products may not be available in certain areas.

Contact a docomo Shop or retailer for details.

Refer to the user's guide of each product for more details.

- FOMA AC Adapter 01^{*1/02}*1
- Battery Pack SH20
- Back Cover SH26/SH28
- Desktop Holder SH22
- Earphone Terminal P001^{*2}
- Flat-plug Stereo Earphone Set P01^{*3}
- Flat-plug Earphone/Microphone with Switch P01^{*3}/P02^{*3}
- Stereo Earphone Set P001^{*2}
- Earphone/Microphone with Switch P001^{*2}/P002^{*2}
- Earphone/Microphone 01
- Stereo Earphone Set 01
- Earphone Plug Adapter P001^{*3}
- Earphone Plug Adapter for External connector terminal 01
- Earphone Plug Adapter 01
- FOMA USB Cable^{*4}
- Wireless Earphone Set 02
- FOMA AC Adapter 01 for Global use^{*1}
- FOMA DC Adapter 01/02
- FOMA Indoor Booster Antenna^{*5}
- In-Car Hands-Free Kit 01^{*6}
- FOMA In-Car Hands-free Cable 01
- In-Car Holder 01^{*7}
- FOMA Dry Battery Adapter 01
- Carry Case L 01
- Bone conduction microphone/receiver 01^{*3}/02
- FOMA USB Cable with Charge Function 02^{*4}
- FOMA Portable Charging Adapter 01
- FOMA Indoor Booster Antenna (Stand Type)^{*5}

*1 Refer to P. 48 for details on charging with an AC adapter.

*2 Connect Earphone Plug Adapter for External connector terminal 01 and Earphone Plug Adapter to use these options and accessories.

- *3 Connect Earphone Plug Adapter for External connector terminal 01 to use these options and accessories.
- *4 The use of USB HUB may not work correctly.
- *5 For use only in Japan.
- *6 FOMA In-Car Hands-Free Cable 01 is required to charge and connect with the USB cable.
- *7 Activate Side key lock to use the In-Car Holder 01.

Interfacing to external devices

Play back movies saved on microSD Cards on the FOMA terminal by using supported external devices.*
microSD Cards are sold separately. Purchase microSD Cards at home electronics shops (☎ P. 347).

For details on compatible devices, refer to <http://k-tai.sharp.co.jp/support/d/sh-03a/>. Or, contact the number below.

- Play i-motion created on external devices (including music data in AAC format) on the FOMA terminal (☎ P. 264).
- * Some movies cannot be played back depending on the file format or the type of external device.

Sharp Data Communication Support Center

TEL: 03-5396-2351

Hours: 10:00 A.M. to 12:00 noon, 1:00 P.M. to 5:00 P.M.,

Monday through Friday

(Closed on weekends, national holidays, and company holidays)

- Check the phone number carefully before dialing.

Data type	Number of applicable entries to be saved/registered	Number of applicable entries to be protected
Melody	500* ⁵	—
User folder	20	—
PDF data	50* ^{5, 6}	—
User folder	20	—
ToruCa	200* ⁵	—
User folder	20	—
e-book/e-dictionary/e-comic	1,000* ^{5, 6}	—
Folder	400* ⁷	—
1Seg video	99* ⁵	—
Font (TTF)	1	—

*1 Up to 50 entries can be saved in the FOMA card.

*2 Total number of the timers for starting and recording programs.

*3 Save a national holiday besides holidays already saved.

*4 For SMS, up to 20 received and sent messages can be saved in the FOMA card (☎ P. 172).

*5 Saved amount may vary depending on available memory (☎ P. 365).

*6 Pre-installed data which can be deleted is included.

*7 Pre-installed folder is included.

*8 Set up to five dictionaries.

*9 Still picture for which 1Seg programs is recorded is included.

Specific Absorption Rate (SAR) of mobile phone

This model phone SH-03A meets the MIC's* technical regulation for exposure to radio waves.

The technical regulation established permitted levels of radio frequency energy, based on standards that were developed by independent scientific organizations through periodic and thorough evaluation of scientific studies. The regulation employs a unit of measurement known as the Specific Absorption Rate, or SAR. The SAR limit is 2 watts/kilogram (W/kg)** averaged over ten grams of tissue. The limit includes a substantial safety margin designed to assure the safety of all persons, regardless of age and health. The value of the limit is equal to the international guidelines recommended by ICNIRP***.

All phone models should be confirmed to comply with the regulation, before they are available for sale to the public. The highest SAR value for this model phone is 0.990 W/kg. It was taken by the Telecom Engineering Center (TELEC), a Registered Certification Agency on the Radio Law. The test for SAR was conducted in accordance with the MIC testing procedure using standard operating positions with the phone transmitting at its highest permitted power level in all tested frequency bands. While there may be differences between the SAR levels of various phones and at various positions, they all meet the MIC's technical regulation. Although the SAR is determined at the highest certified power level, the actual SAR of the phone during operation can be well below the maximum value.

For further information about SAR, please see the following websites:

World Health Organization (WHO)

<http://www.who.int/peh-emf/>

ICNIRP

<http://www.icnirp.de/>

MIC

<http://www.tele.soumu.go.jp/e/ele/body/index.htm>

TELEC

http://www.telec.or.jp/ENG/Index_e.htm

NTT DOCOMO

<http://www.nttdocomo.co.jp/english/product/>

SHARP Corporation

<http://www.sharp.co.jp/products/menu/phone/cellular/sar/index.html>

* Ministry of Internal Affairs and Communications

** The technical regulation is provided in Article 14-2 of the Ministry Ordinance Regulating Radio Equipment.

***International Commission on Non-Ionizing Radiation Protection

European RF Exposure Information

Your mobile device is a radio transmitter and receiver. It is designed not to exceed the limits for exposure to radio waves recommended by international guidelines. These guidelines were developed by the independent scientific organization ICNIRP and include safety margins designed to assure the protection of all persons, regardless of age and health.

The guidelines use a unit of measurement known as the Specific Absorption Rate, or SAR. The SAR limit for mobile devices is 2 W/kg and the highest SAR value for this device when tested at the ear was 1.14 W/kg*.

As SAR is measured utilizing the devices highest transmitting power the actual SAR of this device while operating is typically below that indicated above. This is due to automatic changes to the power level of the device to ensure it only uses the minimum level required to reach the network.

The World Health Organization has stated that present scientific information does not indicate the need for any special precautions for the use of mobile devices. They note that if you want to reduce your exposure then you can do so by limiting the length of calls or using a hands-free device to keep the mobile phone away from the head.

* The tests are carried out in accordance with international guidelines for testing.

Declaration of Conformity

CE 0168

Hereby, Sharp Telecommunications of Europe Ltd, declares that this SH-03A is in compliance with the essential requirements and other relevant provisions of Directive 1999/5/EC.

A copy of the original declaration of conformity can be found at the following Internet address:
<http://www.sharp.co.jp/k-tai/>

FCC Notice

- This device complies with part 15 of the FCC Rules. Operation is subject to the following two conditions:
(1) This device may not cause harmful interference, and (2) this device must accept any interference received, including interference that may cause undesired operation.
- Changes or modifications not expressly approved by the manufacturer responsible for compliance could void the user's authority to operate the equipment.

Information to User

This equipment has been tested and found to comply with the limits of a Class B digital device, pursuant to Part 15 of the FCC Rules. These limits are designed to provide reasonable protection against harmful interference in a residential installation. This equipment generates, uses and can radiate radio frequency energy and, if not installed and used in accordance with the instructions, may cause harmful interference to radio communications.

However, there is no guarantee that interference will not occur in a particular installation; if this equipment does cause harmful interference to radio or television reception, which can be determined by turning the equipment off and on, the user is encouraged to try to correct the interference by one or more of the following measures:

1. Reorient/relocate the receiving antenna.
2. Increase the separation between the equipment and receiver.
3. Connect the equipment into an outlet on a circuit different from that to which the receiver is connected.
4. Consult the dealer or an experienced radio/TV technician for help.

FCC RF Exposure Information

Your handset is a radio transmitter and receiver.

It is designed and manufactured not to exceed the emission limits for exposure to radio frequency (RF) energy set by the Federal Communications Commission of the U.S. Government.

The guidelines are based on standards that were developed by independent scientific organisations through periodic and thorough evaluation of scientific studies. The standards include a substantial safety margin designed to assure the safety of all persons, regardless of age and health.

The exposure standard for wireless handsets employs a unit of measurement known as the Specific Absorption Rate, or SAR. The SAR limit set by the FCC is 1.6 W/kg.

The tests are performed in positions and locations (e.g., at the ear and worn on the body) as required by the FCC for each model. The highest SAR value for this model handset when tested for use at the ear is 1.02 W/kg and when worn on the body, as described in this user guide, is 0.387 W/kg.

Body-worn Operation; This device was tested for typical body-worn operations with the back of the handset kept 1.5 cm from the body. To maintain compliance with FCC RF exposure requirements, use accessories that maintain a 1.5 cm separation distance between the user's body and the back of the handset. The use of beltclips, holsters and similar accessories should not contain metallic components in its assembly.

The use of accessories that do not satisfy these requirements may not comply with FCC RF exposure requirements, and should be avoided. The FCC has granted an Equipment Authorization for this model handset with all reported SAR levels evaluated as in compliance with the FCC RF emission guidelines. SAR information on this model handset is on file with the FCC and can be found under the Display Grant section of <http://www.fcc.gov/oet/fccid> after searching on FCC ID APYHRO00082.

Additional information on Specific Absorption Rates (SAR) can be found on the Cellular Telecommunications & Internet Association (CTIA) Website at <http://www.phonefacts.net>.

Export Administration Regulations

The Japan Export Administration Regulations (“Foreign Exchange and International Trade Law” and its related laws) will be applied to this product and its accessories under certain conditions. The Export Administration Regulations are also applied. To export or reexport this terminal and its accessories, conduct all legally required procedures at your own risk and expense. For details on the procedures, contact the Ministry of Economy, Trade and Industry or the US Department of Commerce.

Intellectual property rights

Copyrights and rights of portrait

- Data with third party copyrights such as text, images, music and software that is downloaded or acquired via Internet web pages, shot by the FOMA terminal, or acquired from TV or other video cannot be duplicated, altered or publicly transmitted without rightful party's consent. Only duplicating, quoting, etc. for personal use is permitted under copyright laws.
Even if for personal use, filming and recording may be prohibited for demonstrations, performances and exhibitions.
Also, shooting another's image or posting another's image on Internet web pages without their consent may constitute a violation of one's right to their image.

Registered trademarks and trademarks

- "FOMA", "mova", "ToruCa", "PushTalk", "PushTalkPlus", "mopera", "mopera U", "FirstPass", "Chara-den", "Deco-mail", "Chaku-motion", "i-motion mail", "i-appli", "i-appliDX", "i-motion", "i-mode", "i-Channel", "iD", "DCMX", "WORLD WING", "Public mode", "DoPa", "WORLD CALL", "Dual Network", "visualnet", "V-live", "Security Scan", "musea", "sigmarion", "OFFICEED", "IMCS", "i-area", "2in1", "Chokkan Game", the "i-mode" logo, the "FOMA" logo, the "i-appli" logo, the "DCMX" logo, the "iD" logo, the "HIGH-SPEED" logo are trademarks or registered trademarks of NTT DOCOMO, Inc.
- Free Dial logo mark is a registered trademark of NTT Communications Corporation.

- **symbian** This product includes software licensed from Symbian Software Ltd.
Symbian, Symbian OS and other associated Symbian marks are all trademarks of Symbian Software Ltd.
© 1998-2008 Symbian Software Ltd. All rights reserved.
- Catch Phone (Call Waiting) is a registered trademark of Nippon Telegraph and Telephone Corporation.
- Multitask is a registered trademark of NEC Corporation.
- This product is equipped with NetFront Browser, NetFront Sync Client and NetFront Browser DTV Profile Wireless Edition by ACCESS Co., Ltd. for an internet browser or other application software.
- This product adopts Media: specifications of ACCESS CO., Ltd. for activating broadcasting contents.
Copyright © 1996-2008 ACCESS CO., LTD.
- ACCESS, NetFront and Media: are trademarks or registered trademarks of ACCESS Co., Ltd. in the United States, Japan and other countries.

ACCESS™ NetFront®

- Microsoft®, Windows®, Windows Vista®, PowerPoint® and Windows Media® are trademarks or registered trademarks of Microsoft Corporation in the U.S.A. and other countries.
- Microsoft Excel and Microsoft Word are product names of Microsoft Corporation in the U.S.A.
- Java and all Java-based trademarks and logos are trademarks or registered trademarks of Sun Microsystems, Inc. in the U.S.A. and other countries.
- QuickTime is a registered trademark of Apple Inc., in the US and other countries.
- QR code is a registered trademark of Denso Wave Inc.

- microSDHC Logo is a trademark.




- Powered by JBlend™ Copyright 2002-2008 Aplix Corporation. All rights reserved.
JBlend and JBlend related trademarks are registered trademarks or trademarks of Aplix Corporation in Japan and other countries.



-  Document Viewer is powered by Picstel Technologies.
Picstel, Picstel Powered, Picstel Viewer, Picstel Document Viewer and the Picstel cube logo are trademarks or registered trademarks of Picstel Technologies and/or its affiliates.
- "AXISFont" is a trademark of AXIS Inc. in Japan.
- This handset features LCFONT, developed by Sharp Corporation, to make the LCD easier to view and read. LCフォント/LCFONT and  are registered trademarks of Sharp Corporation.
- Heisei font is an intellectual property of Font Development and Promotion Center of Japanese Standards Association, and "SH Heisei Mincho" is a font developed by DynaComware Corp. with a license.
- DynaFont is a registered trademark of DynaComware Taiwan Inc.
- McAfee® is registered trademarks or trademarks of McAfee, Inc. and/or its affiliates in the U.S.A. and other countries.
- Gガイド, G-GUIDE, Gガイドモバイル, G-GUIDE MOBILE and the G-GUIDE related logos are registered trademarks of Gemstar-TV Guide International, Inc. and/or its affiliates in Japan.
- Google and Google Map for Mobile are trademarks of Google Inc.
- iavatar is a trademark of D2 Communications Inc.
- Avatar Maker is a trademark of Acrodea, Inc.
- Mobile Suica is a registered trademark of East Japan Railway Company.



- IrSimple™, IrSS™ or IrSimpleShot™ are trademarks of Infrared Data Association®.
- F e l i C a , which uses non-contact IC card technology, was created by Sony Corporation.
- F e l i C a is a registered trademark of Sony Corporation.
-  is a registered trademark of FeliCa Networks, Inc.
- Napster is a registered trademark of Napster, LLC. and/or its affiliates in the US and/or other countries.
- Dolby and the double-D symbol are registered trademarks of Dolby Laboratories.
- FlashFX® Pro™ is a trademark or registered trademark of the Datalight, Inc. in the US.
(U.S. Patent Office 5,860,082/6,260,156)
- PhotoSolid® and FaceSolid™ are the trademarks or the registered trademarks of Morpho, Inc.
- "AQUOS", "TOUCH CRUISER", "Desktop clock", "VeilView", "Cameraloupe", "Shotdeco", "Wakeup TV", "Egao focus shutter", and "Furimuki shutter" are trademarks or registered trademarks of Sharp Corporation.
- All other company names and product names are trademarks or registered trademarks of the respective companies.

Others

- Under the MPEG-4 Visual Patent Portfolio License, customers have licensed permission for the following use of this product to engage in non-profit personal use. Other uses are not permitted.
 - Encoding MPEG-4 standard video (henceforth referred to as MPEG-4 video).
 - Decoding an MPEG-4 video that a customer not engaged in personal commercial activities has encoded.
 - Decoding an MPEG-4 video obtained from a licensed provider.
 For details on other intended uses, contact MPEG LA, LLC.

- This product is licensed under the MPEG-4 Systems Patent Portfolio License for encoding in compliance with the MPEG-4 Systems Standard. An additional license and payment of royalties are necessary in the following cases.
 - Data stored or replicated in physical media which is paid for on a title by title basis.
 - Data which is paid for on a title by title basis and is transmitted to an end user for permanent storage and/or use.
 Such additional license may be obtained from MPEG LA, LLC. Contact MPEG LA, LLC for additional details.
- This product is licensed under the AVC patent portfolio license for the personal and noncommercial use of a consumer to (i) encode video in compliance with the AVC standard (henceforth referred to as AVC video) and/or (ii) decode AVC video that was encoded by a consumer engaged in a personal and noncommercial activity and/or was obtained from a video provider licensed to provide AVC video. No license is granted or shall be implied for any other use. Additional information may be obtained from MPEG LA, L.L.C. See [HTTP://WWW.MPEGLA.COM](http://www.MPEGLA.COM)
- This product is licensed under the VC-1 Patent Portfolio License for the personal and noncommercial use of a consumer to (i) encode video in compliance with the VC-1 standard (henceforth referred to as VC-1 video) and/or (ii) decode VC-1 video that was encoded by a consumer engaged in a personal and noncommercial activity and/or was obtained from a video provider licensed to provide VC-1 video. No license is granted or shall be implied for any other use. Additional information may be obtained from MPEG LA, L.L.C. See [HTTP://WWW.MPEGLA.COM](http://www.MPEGLA.COM)

- Contains Adobe® Flash® Lite™ and Adobe Reader® LE technology by Adobe Systems Incorporated
 Adobe Flash Lite Copyright © 2003-2008 Adobe System Incorporated. All rights reserved.
 Adobe Reader LE Copyright © 1993-2007 Adobe Systems Incorporated. All rights reserved.
 Adobe, Adobe Reader, Flash, and Flash Lite are either registered trademarks or trademarks of Adobe Systems Incorporated in the United States and/or other countries.
- This product includes modules developed by the Independent JPEG Group.
- This product uses the GestureTek technology. Copyright © 2006-2008, GestureTek, Inc. All Rights Reserved.
- This product is equipped with "Fugue" by Kyoto Software Research, Inc. for a file system function.



Fugue ©1999-2008 Kyoto Software Research, Inc. All rights reserved.

- Manufactured under license from Dolby Laboratories.
- Licensed by QUALCOMM Incorporated under one or more of the following United States Patents and/or their counterparts in other nations;

4,901,307	5,490,165	5,056,109	5,504,773
5,101,501	5,506,865	5,109,390	5,511,073
5,228,054	5,535,239	5,267,261	5,544,196
5,267,262	5,568,483	5,337,338	5,600,754
5,414,796	5,657,420	5,416,797	5,659,569
5,710,784	5,778,338		

- Bluetooth software stack of this product is developed by TOSHIBA CORPORATION, and contains Toshiba Embedded Bluetooth Stack for Symbian with the copyright of TOSHIBA CORPORATION.
- Content owners use Windows Media digital rights management (WMDRM) technology to protect their intellectual property, including copyrights. This device uses WMDRM software to access WMDRM-protected contents. If the WMDRM software fails to protect the content, content owners may ask Microsoft to revoke the software's ability to use WMDRM to play or copy protected content. Revocation does not affect unprotected content. When you download licenses for protected content, you agree that Microsoft may include a revocation list with the licenses. Content owners may require you to upgrade WMDRM to access their content. If you decline an upgrade, you will not be able to access content that requires the upgrade.
- CP8 PATENT
- This manual refers to each OS (Japanese version) as follows.
 - Windows Vista is an abbreviation of Windows Vista® (Home Basic, Home Premium, Business, Enterprise, Ultimate).
 - Windows XP is an abbreviation of Microsoft® Windows® XP Professional operating system or Microsoft® Windows® XP Home Edition operating system.
 - Windows 2000 is an abbreviation of Microsoft® Windows® 2000 Professional operating system.
- The Bluetooth word mark and logos are owned by Bluetooth SIG, Inc. and any use of such marks by NTT DOCOMO, INC. is under license. Other trademarks and trade names are those of their respective owners.
- Internet dictionary embedded in this product uses the BSD license. Copyright © 2002,2003, Stefan Haustein, Oberhausen, Rhld., Germany All rights reserved
 - Redistribution and use in source and binary forms, with or without modification, are permitted provided that the following conditions are met:
 - Redistributions of source code must retain the above copyright notice, this list of conditions and the following disclaimer. Redistributions in binary form must reproduce the above copyright notice, this list of conditions and the following disclaimer in the documentation and/or other materials provided with the distribution.
 - Neither the name of the <ORGANIZATION> nor the names of its contributors may be used to endorse or promote products derived from this software without specific prior written permission.

THIS SOFTWARE IS PROVIDED BY THE COPYRIGHT HOLDERS AND CONTRIBUTORS "AS IS" AND ANY EXPRESS OR IMPLIED WARRANTIES, INCLUDING, BUT NOT LIMITED TO, THE IMPLIED WARRANTIES OF MERCHANTABILITY AND FITNESS FOR A PARTICULAR PURPOSE ARE DISCLAIMED. IN NO EVENT SHALL THE COPYRIGHT OWNER OR CONTRIBUTORS BE LIABLE FOR ANY DIRECT, INDIRECT, INCIDENTAL, SPECIAL, EXEMPLARY, OR CONSEQUENTIAL DAMAGES (INCLUDING, BUT NOT LIMITED TO, PROCUREMENT OF SUBSTITUTE GOODS OR SERVICES; LOSS OF USE, DATA, OR PROFITS; OR BUSINESS INTERRUPTION) HOWEVER CAUSED AND ON ANY THEORY OF LIABILITY, WHETHER IN CONTRACT, STRICT LIABILITY, OR TORT (INCLUDING NEGLIGENCE OR OTHERWISE) ARISING IN ANY WAY OUT OF THE USE OF THIS SOFTWARE, EVEN IF ADVISED OF THE POSSIBILITY OF SUCH DAMAGE.

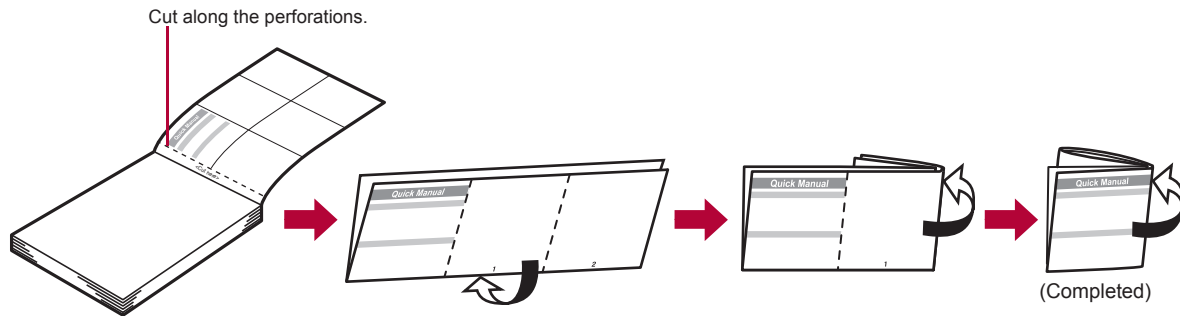
Quick Manual

How to use Quick Manual

Remove the Quick Manual attached to the end of this manual by cutting along the perforations and fold it as shown below. Carry the Quick Manual "Overseas Use" when the mobile phone is used with the International Roaming (WORLD WING) overseas.

Folding Quick Manual

- Be careful of injuries when cutting out the Quick Manual.



This manual is produced using recyclable material. Please recycle when no longer needed.

Quick Manual

Registration/Contacts

General Inquiries <docomo Information Center>

☎ 0120-005-250 (toll free)

※ Service available in: English, Portuguese, Chinese, Spanish, Korean.

※ Available from mobile phones and PHSs.

For DOCOMO mobile phones
(In Japanese only)

☎ (No prefix) 151 (toll free)

※ Unavailable from fixed-line telephones, etc.

For fixed-line telephones
(In Japanese only)

☎ 0120-800-000 (toll free)

※ Available from mobile phones and PHSs.

● Please confirm the phone number before you dial.

<Out here>

Text input

Changing input mode

1 In the text input screen, press **[F1]** select the input mode **[C]**.

Switching upper/lower case

1 Enter a character **[X]**.

Deleting text

1 Move the cursor to the text and press **[CLR]**.

- To delete all text: At the end of the message, press **[CLR]** (for 1+ seconds).

Using phrases

1 In the text input screen, press **[F1]** (for 1+ seconds) **[>]** select a phrase **[>]** **[>]**.

If you have problems with your FOMA

For DOCOMO mobile phones
(In Japanese only)

☎ (No prefix) 113 (toll free)

※ Unavailable from fixed-line telephones, etc.

For fixed-line telephones
(In Japanese only)

☎ 0120-800-000 (toll free)

※ Available from mobile phones and PHSs.

● Please confirm the phone number before you dial.

Adding entries to phonebook (Phone)

- 1 In stand-by, press **[F1]** (for 1+ seconds) **[>]** **[Phone]**.
- 2 Enter a name **[>]** **[>]** **[F1]** enter a phone number **[>]** **[>]** select a phone type icon **[>]** **[>]** **[F1]** enter a mail address **[>]** **[>]** select a mail address type icon **[>]** **[>]** **[F1]** select Add to PushTalk PB **[>]** **[>]**.

Entering pictographs/symbols

- 1 In the text input screen, press **[F1]**.
 - To switch between pictograph and Deco-mail pictograph: Press **[F1]**.
 - To switch between single- and double-byte symbols: Press **[@]**.

Entering emoticons

1 In the text input screen, press **[F1]** (for 1+ seconds) **[>]** select an emoticon **[>]** **[>]**.

Cutting/Copying/Pasting text

- 1 In the text input screen, move the cursor to the start point **[>]** **[F1]** **[Copy]/[Cut(Hold)]** **[>]** **[>]**.
- 2 Move the cursor to the end point **[>]** **[>]**.
- 3 Move the cursor to the paste location **[X]** (for 1+ seconds).

Other save items

- ☎ : Group
- ☎ : Company/Shop
- ☎ : Department
- ☎ : Title
- ☎ : Postal code
- ☎ : Postal address
- ☎ : Location info
- ☎ : Birthday
- ☎ : Memo
- ☎ : Secret
- ☎ : Secret code
- ☎ : Select ring tone
- ☎ : Mail ring tone
- ☎ : Called LED color
- ☎ : Called LED pattern
- ☎ : Mail/Message LED color
- ☎ : Mail LED pattern
- ☎ : Picture call set
- ☎ : Substitute image

Adding entries to phonebook from Redials/Received calls

- 1 In stand-by, press **[F1]** (for 1+ seconds) **[>]** select a phone number **[>]** **[F1]** **[Add to phonebook]** **[>]** **[Save new to phone]** add to the phonebook.

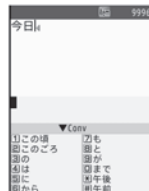
Editing phonebook entries

- 1 In stand-by, press **[F1]** select a name **[>]** **[F1]** **[Edit data]** **[Edit]** select an item **[>]** **[>]** edit.

Text input example

Ex.) 今日のテニス3時食

- 1 In the text input screen, press **[2]** (twice) **[>]** **[F1]**.
 - As each hiragana character is entered, conversion candidates appear and they can be selected.



2 Press **[0]**.

3 Press **[4][5][3]** **[テニス]**.

- Use **[0]** for One-touch conversion.

4 Press **[5]** (five times) **[3]**.

- Press **[5]** (five times) for single-byte alphanumeric mode.

5 Press **[5]** (twice) **[3]** (twice) **[X]** **[0]** **[時]**.

- Use **[X]** for dakuten mark.

6 Press **[6]** **[.]**.



-6-

Changing font (font style)

1 In the Custom menu, select **[Settings]** **[Disp/LED/Power saver]** **[Font style]** **[Font style setting]** select the font **[0]**.

Changing font size

1 In the Custom menu, select **[Settings]** **[Disp/LED/Power saver]** **[Font style]** **[Font size]** **[Individual setting]** select the **[Input] field** **[0]** select the font size **[0]** **[Yes]**.

- To change collectively: In stand-by, press **[5]** (for 1+ seconds).

-7-

Camera

Shooting still pictures

1 In stand-by, press **[0]** **[0]** **[0]**.

Shooting panoramic pictures

1 In the still picture shooting screen, press **[0]** **[0]** move the FOMA terminal to either direction of left or right **[0]** **[0]**.

Shooting movies

1 In the still picture shooting screen, press **[0]** **[Switch camera-mode]** **[Movie]** **[0]** **[0]** **[Save]**.

Displaying still pictures

1 In the Custom menu, select **[Data box]** **[My picture]** select a still picture **[0]**.

-8-

Playing back movies

1 In the Custom menu, select **[Data box]** **[i-motion]** select a movie **[0]**.

Watching 1Seg

Performing Automatic channel setting

1 In the Custom menu, select **[1Seg]** **[Channel setting]**.

2 Select the number to save **[0]** **[Auto channel set]** **[Yes]**.

3 Select an area **[0]** select a prefecture/district **[0]** **[Yes]** **[Yes]**.

Selecting a channel list

1 In the Custom menu, select **[1Seg]** **[Channel setting]** select a channel list **[0]**.

-9-

Watching 1Seg

1 In stand-by, press **[TV]**.

- To record a movie of 1Seg programs: While watching 1Seg, press **[6]** (for 1+ seconds) **[record]** **[6]**.
- To record 1Seg programs as a still picture: While watching 1Seg, press **[6]**.

Watching videos

1 In the Custom menu, select **[Data box]** **[1Seg]** select a video **[0]**.

Music playback

Using MUSIC Player

1 In the Custom menu, select **[Data box]** **[MUSIC]** select music data **[0]**.

-10-

Key operations for MUSIC Player

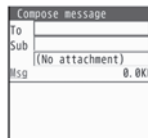
To pause/play	[0]
To stop	[0]
To adjust the volume	[0]
To play previous song/return to the beginning of song	[0]
To play next song	[0]
To end MUSIC Player	[0] [Yes]

Mail

Composing and sending i-mode mail

1 In stand-by, press **[0]** (for 1+ seconds) select the **[To]** field **[0]** select the input method.

- ◆ Select **[Search phonebook]** select a recipient **[0]**.



-11-

- ◆ Select [Sent messages] ▶ select a recipient ▶ ⊖.
 - ◆ Select [Rcvd messages] ▶ select a recipient ▶ ⊖.
 - ◆ Select [Mail members] ▶ select a mail member ▶ ⊖.
 - ◆ Select [Direct input] ▶ enter an address ▶ ⊖.
- 2 Select the [Sub] field ▶ ⊖ ▶ enter a subject ▶ ⊖ ▶ [Msg] ▶ enter the message text ▶ ⊖ ▶ ⊖.

Sending Deco-mail

- 1 In the text input screen, press ⊕ ▶ [Decorate mail] ▶ select a decoration type ▶ ⊖ ▶ specify decoration ▶ ⊖ ▶ input text ▶ ⊖ ▶ ⊖.

Attaching a file

- 1 In stand-by, press ⊕ (for 1+ seconds) ▶ select the attachment field (No attachment) ▶ ⊖ ▶ select the file to attach.
- ◆ Select [Image] ▶ select an image ▶ ⊖.
 - ◆ Select [Melody] ▶ select a melody ▶ ⊖.
 - ◆ Select [i-motion] ▶ select an i-motion ▶ ⊖.
 - ◆ Select [ToruCa] ▶ select a ToruCa ▶ ⊖.

-12-

- ◆ Select [PDF] ▶ select a PDF ▶ ⊖.
 - ◆ Select [Phonebook] ▶ select a save destination ▶ ⊖ ▶ select a name ▶ ⊖.
 - ◆ Select [Schedule] ▶ select a save destination ▶ ⊖ ▶ select a day ▶ ⊖ ▶ select a schedule ▶ ⊖.
- * No operation is needed if [microSD] is selected as the save destination
- ◆ Select [Bookmark] ▶ select a save destination ▶ ⊖ ▶ select a bookmark ▶ ⊖.
 - ◆ Select [Document] ▶ select a file ▶ ⊖.
 - ◆ Select [Other] ▶ select a file ▶ ⊖.
 - ◆ Select [Start cam (still)] ▶ ⊖ ▶ ⊖.
 - ◆ Select [Start cam (movie)] ▶ ⊖ ▶ ⊖ ▶ [Save].

Composing and sending SMS

- 1 In stand-by, press ⊕ ▶ [Compose SMS] ▶ select the [To] field ▶ ⊖ ▶ [Direct input] ▶ enter an address ▶ ⊖ ▶ [Msg] ▶ enter the message ▶ ⊖ ▶ ⊖.

-13-

Receiving mail automatically

- 1 Mail is automatically received.
- 2 Select [Mail] ▶ select the mail ▶ ⊖.

Checking new i-mode mail

- 1 In stand-by, press ⊕ ▶ [Check new messages].
 - SMS: Press ⊕ ▶ [Check new SMS].

Replying to i-mode mail

- 1 In the received message details screen, press ⊕ ▶ [Reply/Forward].
- 2 Select the reply method ▶ ⊖.
- 3 Compose and send a mail.

Forwarding i-mode mail

- 1 In the received message details screen, press ⊕ ▶ [Reply/Forward] ▶ [Forward].
- 2 Enter an address and send a mail.

-14-

Menu list

Switching between the Custom menu/Basic menu

- 1 In the Custom menu/Basic menu, press ⊕.

Recalling a function number

- 1 In the Basic menu, enter a function number.

1 Snd/Vibrator/Manner	
1 Select volume	Received call volume, phone ring vol, Mail ring vol, PushTalk tone vol, Key/Touch sound, Standby i-motion, Charge start sound, Charge end sound, Timer sound, GPS volume
2 Select sound	Select ring tone, Select mail tone, PushTalk tone, Shutter sound, Timer sound, GPS tone
3 Vibrator	Vibration mode, Mail vibration, GPS vibrator, Touch vibrator
4 Manner mode	ON (Normal, Silent, Original), OFF

-15-

1 Snd/Vibrator/Manner	
5 Headset setting	
6 Ring time setting	Mail ring time set, PT ring time set, GPS ring time set
7 Set mute ring time	
8 Hold/On hold tone	Set on hold tone, Set hold tone
9 Sound playback	Melody stereo fx, Melody equalizer, Pref playback sound

-16-

2 Disp/LED/Power saver

1 Set screen	Stand-by display, Clock display, Calendar display, Stand-by memo disp, Desktop clock, Scrn rotation set, Sub) Caller ID disp, Sub) Clock display
2 Font style	Font style setting, Font size
3 Themes	Kisekae Tool, Call/Rcv display, Send/Rcv display, Dial image set, Animate notices, Signal/batt/s clock, Machi-chara, Color theme setting
4 LED settings	Called LED, Mail LED, Notice LED, In-call LED, Alarm/Timer LED, IC card LED, Open/close LED, GPS LED
5 Display img quality	Vibrant image mode, Control by scene quality

-17-

②Disp/LED/Power saver	
⑤Light/Power saver	Norm (auto bright), Norm (fixed bright), Eco mode (Pwr saver), Original Eco mode
⑦VeilView	Linked manner, Pattern, Pattern density
⑧Menu priority	

-18-

③General settings	
①Check status	Owner Information, Check memory, Battery level, Check settings
②Text input setting	User dictionary, Dwnld dictionary, Edit phrase, Clear memory terms, Input method
③Auto power ON/OFF	Auto power ON, Auto power OFF, Link alarm/power ON
④Date settings	
⑤Select language	
⑥TOUCH CRUISER set	Usage settings, Pointer speed, Scroll speed
⑦USB mode setting	
⑧Scanning function	Update, Set auto-update, Set scan, Version
⑨Software update	
⑩Reset settings	

-19-

④NW Services	
①Voice Mail	Check messages, Play Messages, Activate VoiceMail, Set ring time, Deactivate VoiceMail, Check setting, Voice Mail setting, Notification setting, Notification, V.phone Voice Mail
②Call waiting	Activate, Deactivate, Check setting
③Forwarding	Activate, Deactivate, Register number, If FWD number busy, Check setting
④Nuis. call blocking	Register caller, Register selected No, Delete all entries, Delete last entry, Check No of entries

-20-

④NW Services	
⑤Notify caller ID	Check setting, Activate/Deactivate
⑥Caller ID request	Activate, Deactivate, Check setting
⑦Talk time/cost	
⑧2in1 setting	Mode switching, Phonebook 2in1 set, Stand-by display, Set call/receive No., 2in1 function OFF, Receive avoidance
⑨In-call arrival act	Set arrival act, Arrival Call Act

-21-

⑤Other NW Services	
①Remote Control	Activate, Deactivate, Check setting
②Dual network	Switching, Check setting
③English guidance	Guidance setting, Check setting
④Service Numbers	ドコモ故障問合せ, ドコモ総合案内・受付
⑤Additional service	USSD, Reply message
⑥Multi number	Set multi number, Check setting, Number setting
⑦Chaku-moji	Create message, Message display
⑧Roaming guidance	Activate, Deactivate, Check setting

-22-

⑤Phone settings	
①In-call settings	Noise reduction, Reconnect signal, Quality alarm
②Headset sw to call	
③Incoming settings	Any key answer, Auto answer setting, Melody Call setting
④Videophone set	Redial voice call, Set sending image, Display setting, Subscreen position, Visual preference, Notify switch mode, Hands-free V.phone, V-phone while packet
⑤Record message	Record message, Answering duration, Reply message, V.phone reply image
⑥Set PushTalk	Set PT arrival act, Hands-free PT
⑦Set when folded	Phone/Videophone, PushTalk
⑧Self mode	
⑨Other settings	Int'l prefix, Sub address, Int'l dial assist, International Roam., In-area status

-23-

7 Security	
1 Secret mode	
2 UIM Settings	PIN1 code input set, Change PIN1 code, Change PIN2 code
3 Accept/Reject calls	Accept calls, Reject calls, Reject unknown, User unset, Reject payphone, Reject not support
4 Show call/ received	Show rcvd calls, Show redial
5 Show sent/ received	Show sent messages, Show rcvd messages
6 Lock settings	All lock, Keypad dial lock, Function lock, Multi lock set, IC card lock, Multi lock auto-set
7 Change security code	
8 Fingerprint ID	
9 Delete all data	Delete user data, Del secret data

-24-

8 i-concier settings	
1 Incoming settings	Select volume, Select sound, Vibrator, Ring time setting, LED setting
2 Information display	
Other settings	
3 Initial setting	
4 Own number	

-25-

Other functions	
Manner mode enable/disable	⏏ (for 1+ seconds)
Public mode (Drive mode) activate/deactivate	ⓧ (for 1+ seconds)
Display the Lock selection	⏏ (for 1+ seconds)
Show i-Channel list	⓪ (ch)
Show i-mode menu	⓪
Show i-appli software list screen	⓪ (ⓧ) (for 1+ seconds)
Activate Quick search	⓪
Activate Multi Assistant (Multitask)	⓪ while using a function
Display Shortcut menu	⓪
Display i-Widget screen	⓪
Display Received messages history	⓪ (for 1+ seconds)
Display Sent messages history	⓪ (for 1+ seconds)
Position location	⓪ (for 1+ seconds)
VeilView ON/OFF	⓪ (for 1+ seconds)

-26-

Network services

※ When the confirmation screen appears, select [Yes].

Voice Mail Service

Voice Mail Service is a paid option (monthly fees apply) that requires subscription.

- 1 In the Custom menu, select [Settings] ▶ [NW Services] ▶ [Voice Mail].
- 2 Select [Activate VoiceMail] ▶ [Activate VoiceMail].
 - To deactivate: Select [Deactivate VoiceMail].
 - To play messages: Select [Play Messages] ▶ [Play(voice call)]/[Play(videophone)].
 - To check messages: Select [Check messages].

-27-

Call Waiting

Call Waiting is a paid option (monthly fees apply) that requires subscription.

- 1 In the Custom menu, select [Settings] ▶ [NW Services] ▶ [Call waiting].
- 2 Select [Activate].
 - To deactivate: Select [Deactivate].
 - To check settings: Select [Check setting].

Call Forwarding Service

Call Forwarding Service is a free option (no monthly fees) that requires subscription.

- 1 In the Custom menu, select [Settings] ▶ [NW Services] ▶ [Call Forwarding].
- 2 Select [Activate] ▶ [Activate].
 - To deactivate: Select [Deactivate].
 - To check settings: Select [Check setting].

-28-

Caller ID Request Service

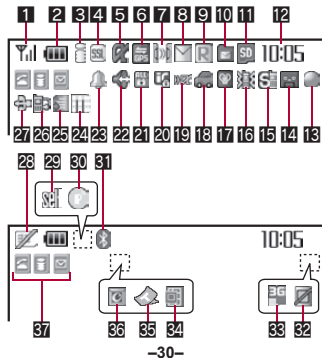
Subscription is not required (no monthly fees).

- 1 In the Custom menu, select [Settings] ▶ [NW Services] ▶ [Caller ID request].
- 2 Select [Activate].
 - To deactivate: Select [Deactivate].
 - To check settings: Select [Check setting].

-29-

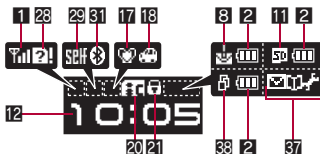
Icon list

Main display



-30-

Sub display



※ Icons are shown in the order of Main display and Sub display.

-31-

1		Signal status
2		Battery level
		Charging
3		i-mode/Full Browser
4		SSL
5		i-appli
6		GPS
7		Ir communication/Bluetooth communication/External device
8		i-mode mail/SMS/Area Mail received
9		Message R/F received
10		Storage status of i-mode center
11		microSD Card is inserted
		microSD Card is being used
12		Clock display
18		1Seg being recorded

-32-

14		Record message
15		Silent
16		Vibrator
17		Manner mode
18		Public mode (Drive mode)
19		i-appli call
20		IC card lock
21		Restriction indicator
22		Hands-free
		Mute in progress (only when rotated the display)
		Bluetooth hands-free
28		Alarm
24		Music&Video Channel program reservation
25		i-mode mail send reservation
26		Earphone/Microphone connection

-33-

27		USB mode
28		FOMA card is malfunctioning or not inserted
		Non-FOMA card is inserted
29		Self mode
30		PushTalk
31		Bluetooth
32		VeilView
33		Operation in progress
34		3G/GSM
35		Status of Comics setting
36		ToruCa
38		Receiving information
37		Multitask
38		Operation in progress

※ Refer to P. 28 to P. 32 of the manual for detailed explanations of displayed icons.

-34-

<Emergency contacts in case of loss or other accidents>

Omakase Lock

※ Omakase Lock is a paid service. However, if Omakase Lock is subscribed while or at the same time as when the use of FOMA terminal is suspended, or if the user is a member of docomo Premier Club, the usage fee of Omakase Lock is not charged. Additionally, if Keitai Anshin Pack (Mobile Phone Security Package) is subscribed, Omakase Lock is available for a flat-rate.

Enable/Disable Omakase Lock

0120-524-360 Office hours: 24hours

Other contacts

<Contacts: >

<Contacts: >

<Contacts: >

※ Please confirm the phone number before you dial.

-35-

Quick Manual "Overseas Use"

Loss or theft of FOMA terminal or payment of cumulative cost overseas
<docomo Information Center> (24-hour service)

For DOCOMO mobile phones

International call access code of your country of stay (Table 1) -81-3-5366-3114* (toll free)

* Communication charges to Japan will apply when you make a call from a fixed-line telephone.

※ If you use the SH-03A, you should dial the number +81-3-5366-3114 (to dial "+", press the "0" key for 1+ seconds).

For fixed-line telephones

<Universal number>

International prefix number for the universal number (Table 2) -800-0120-0151*

* Communication charges or other charges to your country of stay will apply.

※ See P.19 to P.20 and P.21 to P.22 for international call access codes of major countries (Table1) and international prefix number for the universal number (Table2).

<Cut here>

Setting remote access

■ Setting in Japan

1 In the Custom menu, select [Settings] ▶ [Other NW Services] ▶ [Remote Control] ▶ [Activate] ▶ [Yes].

■ Setting in overseas

1 In the Custom menu, select [Settings] ▶ [Phone settings] ▶ [Other settings] ▶ [International Roam.] ▶ [Remote access (Int.)] ▶ [Yes] ▶ operate according to the voice guidance.

Correcting date and time automatically

1 In the Custom menu, select [Settings] ▶ [General settings] ▶ [Date settings] ▶ select the [Auto time correction] field ▶ [ON] ▶ [i].

Failures encountered overseas
<Network Technical Operation Center>
(24-hour service)

For DOCOMO mobile phones

International call access code of your country of stay (Table 1) -81-3-6718-1414* (toll free)

* Communication charges to Japan will apply when you make a call from a fixed-line telephone.

※ If you use the SH-03A, you should dial the number +81-3-6718-1414 (to dial "+", press the "0" key for 1+ seconds).

For fixed-line telephones

<Universal number>

International prefix number for the universal number (Table 2) -800-5931-8600*

* Communication charges or other charges to your country of stay will apply.

※ See P.19 to P.20 and P.21 to P.22 for international call access codes of major countries (Table1) and international prefix number for the universal number (Table2).

Setting time zone manually

1 In the Custom menu, select [Settings] ▶ [General settings] ▶ [Date settings] ▶ select the [Auto time correction] field ▶ [OFF].

2 Press [i] ▶ select a time zone ▶ select a city ▶ [i].

Available network

3G network	Available
GSM network	Available
GPRS network	Available

Setting network communication system

1 In the Custom menu, select [Settings] ▶ [Phone settings] ▶ [Other settings] ▶ [International Roam.] ▶ [3G/GSM setting] ▶ select the communication method ▶ [i].

Preparing for overseas use

Setting i-mode

■ Setting in Japan

1 In stand-by, press [i] ▶ [iMenu] ▶ [English] ▶ [Options] ▶ [International Settings] ▶ [i-mode services Settings] ▶ [Yes] ▶ select the [Enter i-mode Password] field ▶ enter the i-mode password ▶ [OK].

■ Setting in overseas

1 In stand-by, press [i] ▶ [iMenu] ▶ [English] ▶ [International Settings] ▶ [i-mode services Settings] ▶ [Yes] ▶ select the [Enter i-mode Password] field ▶ enter the i-mode password ▶ [OK].

Available services overseas

Communication service	3G	GSM	GPRS
Voice call	○	○	○
Videophone	○	×	×
i-mode mail	○	×	○
i-mode	○	×	○
i-Channel	○	×	○
i-concier	○	×	○
i-Widget	○	×	○
SMS	○	○	○
Data communication (packet transmission)	○	×	○

● Unable to use 64K data communication by connecting a PC, etc. overseas.

Setting a search method of telecommunications carrier

Network search mode

Default setting: Auto (Automatically switches telecommunications carriers)

1 In the Custom menu, select [Settings] ▶ [Phone settings] ▶ [Other settings] ▶ [International Roam.] ▶ [Network search mode].

2 Select [Auto] ▶ [Yes].

- To manually switch telecommunications carriers: Select [Manual] ▶ select a telecommunications carrier ▶ [Yes].
- To re-search for the host network: Select [Network re-search].

-6-

Setting a telecommunications carrier to preferentially connect to

1 In the Custom menu, select [Settings] ▶ [Phone settings] ▶ [Other settings] ▶ [International Roam.] ▶ [Network search mode] ▶ [PLMN setting] ▶ select the number of the priority order ▶ [Yes].

2 Select [PLMN manual select] ▶ enter a country code (MCC) ▶ [Next] ▶ enter a network code (MNC) ▶ [Next] ▶ select a communication method ▶ [Next] ▶ [Yes].

- To save from a telecommunications carrier list: Select [UPLMN by list] ▶ select a telecommunications carrier ▶ [Next] ▶ select a communication method ▶ [Next] ▶ [Yes].
- To save the telecommunications carrier currently connected to: Select [Set VPLMN to PLMN] ▶ [Yes].
- To change the priority: Select [Change priority] ▶ select a destination ▶ [Next] ▶ [Yes].

-7-

Displaying a telecommunications carrier name in stand-by

Telecommunications carrier name



1 In the Custom menu, select [Settings] ▶ [Phone settings] ▶ [Other settings] ▶ [International Roam.] ▶ [Operator name disp] ▶ [Display on] ▶ [Yes].

-8-

Setting after homecoming

If Network search mode is set to [Auto], reset Network search mode to the FOMA network (DOCOMO) automatically when the power is turned on after homecoming.

■ Setting to FOMA network (DOCOMO) manually

1 In the Custom menu, select [Settings] ▶ [Phone settings] ▶ [Other settings] ▶ [International Roam.] ▶ [Network search mode] ▶ [Manual] ▶ [DOCOMO].

-9-

Making a call

Making a call outside your country of stay (including Japan)

■ Using + to make an international call

1 In stand-by, press [0] (for 1+ seconds) ▶ enter the country code, area code (city code) and other party's phone number ▶ [Phone]/[V.phone].

- When the area code (city code) begins with 0, omit the 0 when dialing. However, include 0 when making a call to landline phones in some countries or regions such as Italy.

■ Making an international call outside your country of stay using country code conversion

0 at the beginning of a phone number is automatically converted to the country code set in Country code conversion.

Example: Make a call from the phonebook

1 In stand-by, press [Phone] ▶ select the other party ▶ [Phone]/[V.phone] ▶ [Call].

-10-

■ Making an international call

Save a country number using Set country code to select a country code before making an international call.

The following operation is available overseas only.

1 In stand-by, enter a phone number ▶ [Add prefix setting] ▶ [International Call] ▶ select the country code ▶ [Phone]/[V.phone].

Making a call in your country of stay

1 In stand-by, enter a phone number ▶ [Phone]/[V.phone].

■ Making a call to the phone in your country of stay using phonebook

1 In stand-by, press [Phone] ▶ select the other party ▶ [Phone]/[V.phone] ▶ [Original number].

-11-

■ Making a call to a WORLD WING subscriber overseas

Even when making a call to the phone in your country of stay, make an international call to Japan if the call recipient is a "WORLD WING" subscriber overseas.

- In stand-by, press **0** (for 1+ seconds) **8 1** **▶** enter the other party's mobile phone number excluding the first **0** **▶** **[Phone]/[i]** (V.phone).

Receiving calls

- Press **[hook]** to answer an incoming call.

■ Having calls made to your FOMA terminal from Japan

Enter the phone number in the same way as it is entered in Japan and make a call.

■ Having calls made to your FOMA terminal from countries other than Japan

Enter *international call access code of the country of the caller-81-user's phone number* excluding the first **0** and make a call.

-12-

Setting roaming guidance

Make this setting while still in Japan.

※ When the confirmation screen appears, select [Yes].

- In the Custom menu, select **[Settings]** **▶** **[Other NW Services]** **▶** **[Roaming guidance]**.
- Select **[Activate]**.
 - To deactivate: Select **[Deactivate]**.
 - To check settings: Select **[Check setting]**.

-13-

Call barring

● Depending on the overseas telecommunications carrier, the setting cannot be made.

- In the Custom menu, select **[Settings]** **▶** **[Phone settings]** **▶** **[Other settings]** **▶** **[International Roam.]** **▶** **[Call barring]**.
- Select **[Activate]** **▶** **[Yes]** **▶** select the barring method **▶** **[hook]** **▶** enter the network security code **▶** **[hook]**.
 - To deactivate: Select **[Deactivate]** **▶** **[Yes]** **▶** enter the network security code **▶** **[hook]**.
 - To check settings: Select **[Check setting]**.

Missed Call Notice

- In the Custom menu, select **[Settings]** **▶** **[Phone settings]** **▶** **[Other settings]** **▶** **[International Roam.]** **▶** **[Missed Call Notice]**.
- Select **[Activate]** **▶** **[Yes]**.
 - To deactivate: Select **[Deactivate]** **▶** **[Yes]**.
 - To check settings: Select **[Check setting]**.

-14-

Using network service

● To use network service overseas, set Remote Control to "Activate".

※ When the confirmation screen appears, select [Yes].

※ Operate according to the voice guidance.

Voice Mail (Int.)

- In the Custom menu, select **[Settings]** **▶** **[Phone settings]** **▶** **[Other settings]** **▶** **[International Roam.]** **▶** **[Voice Mail(Int.)]**.
- Select **[Activate Voice Mail]**.
 - To deactivate: Select **[Deactivate]**.
 - To play messages: Select **[Play Messages]**.
 - To set the service: Select **[Voice Mail settings]**.

-15-

Call Forward (Int.)

- In the Custom menu, select **[Settings]** **▶** **[Phone settings]** **▶** **[Other settings]** **▶** **[International Roam.]** **▶** **[Call Forward (Int.)]**.
- Select **[Activate]**.
 - To deactivate: Select **[Deactivate]**.
 - To set the service: Select **[Settings]**.

Roaming guidance (Int.)

- In the Custom menu, select **[Settings]** **▶** **[Phone settings]** **▶** **[Other settings]** **▶** **[International Roam.]** **▶** **[Roam. guidance(Int.)]**.

Missed Call Notice (Int.)

- In the Custom menu, select **[Settings]** **▶** **[Phone settings]** **▶** **[Other settings]** **▶** **[International Roam.]** **▶** **[MissedCallNoticeInt.]**.

-16-

Country codes of major countries

The following shows "Country code" used when making international calls or setting International dial assist.

Country/Region	Code	Country/Region	Code
Australia	61	Hong Kong	852
Austria	43	Hungary	36
Belgium	32	India	91
Brazil	55	Indonesia	62
Canada	1	Italy	39
China	86	Japan	81
Czech	420	Macau	853
Egypt	20	Malaysia	60
Fiji	679	Maldives	960
Finland	358	Netherlands	31
France	33	New Caledonia	687
Germany	49	New Zealand	64
Greece	30	Norway	47

-17-

Country/Region	Code	Country/Region	Code
Peru	51	Tahiti (French Polynesia)	689
Philippines	63		
Russia	7	Taiwan	886
Singapore	65	Thailand	66
South Korea	82	Turkey	90
Spain	34	U.K.	44
Sweden	46	U.S.A.	1
Switzerland	41	Vietnam	84

※ For other country codes and details, refer to the DOCOMO "International Services website".

-18-

International call access codes of major countries (Table 1)

The following shows the International call access codes of major countries.

Country/Region	Code	Country/Region	Code
Australia	0011	Hungary	00
Belgium	00	India	00
Brazil	0021/ 0014	Indonesia	001
		Ireland	00
Canada	011	Italy	00
China	00	Luxemburg	00
Czech	00	Macau	00
Denmark	00	Malaysia	00
Finland	00	Monaco	00
France	00	Netherlands	00
Germany	00	New Zealand	00
Greece	00	Norway	00
Hong Kong	001	Philippines	00

-19-

Country/Region	Code	Country/Region	Code
Poland	00	Taiwan	002
Portugal	00	Thailand	001
Russia	810	Turkey	00
Singapore	001	U.A.E.	00
South Korea	001	U.K.	00
Spain	00	U.S.A.	011
Sweden	00	Vietnam	00
Switzerland	00		

-20-

International prefix number for the universal number (Table 2)

The following shows the International prefix number for the universal number of each country.

Country/Region	Code	Country/Region	Code
Argentina	00	Hong Kong	001
Australia	0011	Hungary	00
Austria	00	Ireland	00
Belgium	00	Israel	014
Brazil	0021	Italy	00
Bulgaria	00	Luxemburg	00
Canada	011	Malaysia	00
China	00	Netherlands	00
Columbia	009	New Zealand	00
Denmark	00	Norway	00
Finland	990	Peru	00
France	00	Philippines	00
Germany	00	Portugal	00

-21-

Country/Region	Code	Country/Region	Code
Singapore	001	Switzerland	00
South Africa	09	Taiwan	00
South Korea	001	Thailand	001
Spain	00	U.K.	00
Sweden	00	U.S.A.	011

-22-

About inquiries overseas

For lost, stolen, and cost settlement, or malfunction of the FOMA terminal overseas, refer to "Loss or theft of FOMA terminal or payment of cumulative cost overseas" on the cover of Quick Manual "Overseas Use" or "Failures encountered overseas" on P.1.

- Add the "International call access code (Table 1)" or "International prefix number for the universal number (Table 2)" that is assigned to your country of stay, to the head of your phone number for inquiries.

-23-

Check/change the subscription, apply for various services, and request various information materials online.

From i-mode iMenu ▶ お客様サポート (User Support) ▶ お申込・お手続き (Applications/Procedures) ▶ 各種お申込・お手続き (Various Applications/Procedures)
Packet communication charges free

From a PC My docomo (<http://www.mydocomo.com/>) ▶ 各種お申込・お手続き (Various Applications/Procedures)

- ※ You will need your "Network Security Code" to access the site from i-mode.
- ※ No packet communication charges are incurred when accessing the site from i-mode. Accessing from overseas will incur charges.
- ※ You will need your "docomo ID/Password" to access the site from PC.
- ※ If you do not have or you have forgotten your "Network Security Code" or "docomo ID/Password", contact the number listed in General Inquiries on the back of this manual.
- ※ The site may not be available depending upon the content of your subscription.
- ※ You may not be able to access some site services due to system maintenance, etc.

Please follow proper etiquette

When using your FOMA terminal, please be considerate of those around you.

Turn off your FOMA terminal in the following places

■ When in an area where use is prohibited

There are places where the use of mobile phones is prohibited. Be sure to turn off your FOMA terminal in the following places.

★On an aircraft ★In a hospital

- ※ There are people outside hospital wards who also use electric medical equipment. Please make sure that your FOMA terminal is turned off in the lobby and waiting room.

■ While driving

Using a mobile phone in hand while driving is regarded as a punishable act.

- ※ If there is no choice but to receive a call, use Hands-free and tell the caller that you will "call back", and then pull over to a safe place to make a call.

■ When in crowded places such as rush-hour trains in case somebody nearby is using an implanted cardiac pacemaker or implanted cardioverter-defibrillator

Your FOMA terminal may affect the operation of such equipment.

■ When in public places such as theaters, movie theaters, or museums

Use of your FOMA terminal in quiet public places will annoy others.

Be careful of where you use your FOMA terminal and the volume of your voice and the ring tone

- When using your FOMA terminal in a restaurant or a hotel lobby, lower your voice.
- In crowded places, be careful not to obstruct other pedestrians.

Be considerate of the privacy of the individuals around you



Please be considerate of the privacy of individuals around you when taking and sending images using a camera-enabled mobile phones.

The following functions will help you to keep your manners in public

There are useful functions you can use to set your FOMA terminal not to answer incoming calls, and to silence all sounds.

● Manner mode (☎ P. 107)/Original manner mode (☎ P. 108)

Silences the Key/Touch sound and all the sounds from the FOMA terminal, and Record message is set (Manner mode). When in the Manner mode, automatically set functions (Record message, Vibrator, Mic sensitivity up, Ring tone, Mail ring tone, alarm tone, Key/Touch sound and Low battery alarm) can be set to ON (enable)/OFF (disable) (Original manner mode).

● Public mode (Drive mode/Power OFF) (☎ P. 72, P. 73)

The caller hears a guidance message stating that the receiver is driving, or in the place where the receiver should refrain from using the mobile phone or turn off the power. The call is disconnected.

● Vibration mode (☎ P. 105)

Notifies incoming calls by vibration.

● Record message (☎ P. 74)

When you are unable to take a call, the Record message function records the caller's message.

- ※ You can also use optional services such as Voice Mail Service (☎ P. 422) and Call Forwarding Service (☎ P. 425).