

Retrieving from the Basic menu

Example: Activating 1Seg by entering function numbers



Basic menu



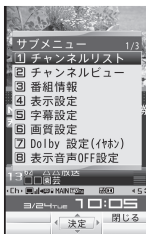
When 1Seg is activated

- When the Custom menu image is changed by Kisekae Tool, the operation may differ from the description in this manual. In this case, switch the menu screen to the Basic menu (P. 32) or perform Reset menu screen (P. 96).

Selecting a function from Submenu

When [Submenu] appears in the operation guidance, press **[OK]** to display functions (Submenu) that can be used in the screen. Select the displayed Submenu with **[Left]**. If there are multiple pages in the Submenu, change pages with **[Right]**.

Alternatively, press the dial key corresponding to the menu item number (1, 2, 3, etc.) to select a function. However, some Submenus do not have item numbers.



Submenu screen

Support Book

Displaying Support Book

Use this function for unsure operations. After the Support Book appears, check the explanation and operation procedures of each function. In addition, directly start functions that were looked up in the Support Book.



1 In stand-by, press **[Q]** ▶ [Support Book].

2 Select a menu or item ▶ **[OK]**.

- To start functions directly: Select the function to start ▶ **[OK]** ▶ [Yes].

FOMA card

Using FOMA card

A FOMA card is an IC card that records personal information, such as phone numbers. A FOMA card can store phonebook data and SMS. By switching FOMA cards, multiple FOMA terminals can be used for different purposes as needed.

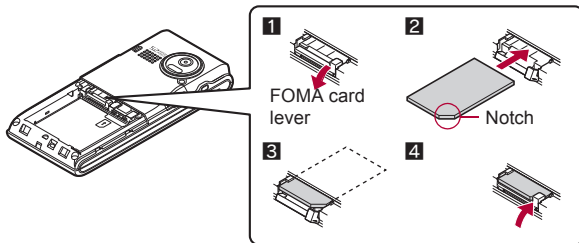
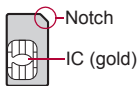
- If a FOMA card is not inserted, transmission functions such as voice/Videophone calls, i-mode, mail transmission and packet transmission are not available on the FOMA terminal.

Inserting/Removing FOMA card

- Before inserting or removing the FOMA card, turn off the power, position the back facing upwards and remove the battery pack. Close and hold the FOMA terminal firmly with your both hands.

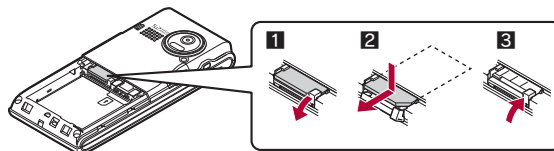
Inserting FOMA card

- 1 Pull the FOMA card lever down (1).**
- 2 Hold the FOMA card with the IC facing down, and set as shown on the below (2).**
 - Push the FOMA card all the way in **3**.
- 3 Pull the FOMA card lever up (4).**



Removing FOMA card

- 1 Pull the FOMA card lever down (1).**
- 2 Push the top of the FOMA card and pull it out straight as shown on the below (2).**
 - Do not allow the FOMA card to fall when removing it.
- 3 Pull the FOMA card lever up (3).**



- Inserting or removing the FOMA card forcibly may damage the card. Use caution.
- Refer to the FOMA card user's guide for more information on the FOMA card.
- Do not lose the FOMA card once it is taken out.

Security codes

The FOMA card has a "PIN1 code" and a "PIN2 code". Both are set to [0000] by default but can be changed to a four- to eight-digit number by the user (P. 106).

FOMA card security functions

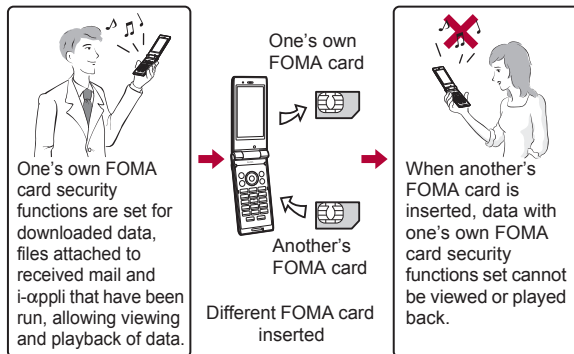
<FOMA card security functions>

The FOMA terminal has built-in FOMA card security functions (FOMA card restriction functions) as functions for protecting personal data and files.

- When data or files are retrieved using any of the following methods or i-αpli is running with the FOMA card inserted into the FOMA terminal, FOMA card security functions are automatically set in the retrieved data or files.
 - When a file such as an image or melody is downloaded from a site or Internet web page
 - When a site or Internet web page is saved as a screen memo
 - When i-mode mail with a file attached is received
 - When i-αpli is running
- Data, files or software with FOMA card security functions run only when in use with the FOMA card inserted at time of acquisition. Display, play, attach to i-mode mail, run software, send data using Ir communication function and iC communication function, and copy to microSD Card can be executed. These operations cannot be performed if a different FOMA card is inserted.
- The following indicates the data for which FOMA card security is set.
 - Melody
 - Image (including animation and Flash movie)
 - Screen memo
 - Chaku-uta®/Chaku-uta full®
 - Chara-den
 - File attached to Message R/F
 - i-motion
 - ToruCa (details) image
 - Kisekae Tool
 - Image inserted to Deco-mail or signature
 - Machi-chara
 - Videophone picture memo
 - Download dictionary
 - i-αpli (including i-αpli stand-by)
 - Download font
 - Contents transfer compatible data
 - Image in Message R/F
 - Music&Video Channel program

- Deco-mail template with data which FOMA card security functions are set
 - Decome-Anime Template
 - e-book/e-dictionary/e-comic saved in the [Comic] folder
 - File attached to i-mode mail other than the following
 - ToruCa
 - Phonebook
 - Schedule
 - Bookmark
- ※ "Chaku-uta" is a registered trademark of the Sony Music Entertainment (Japan) Inc.

- The following indicates the settings saved in the FOMA card.
 - Own number
 - Select language
 - SMS center
 - SMS input character
 - PIN setting
 - SSL certificates
 - SMS expiry
- The following explanation refers to the FOMA card inserted at time of data/files retrieval as "one's own FOMA card" and other FOMA cards as "another's FOMA card".



- When one's own FOMA card is replaced with another's FOMA card, the data or files for which FOMA card security functions are set cannot be set as stand-by displays or ring tones.
- When a FOMA card is replaced with another's FOMA card, FOMA card security functions are activated and if data or file retrieved from a site is set as the stand-by display or ring tone, the setting is reset to the default. When one's own FOMA card is re-inserted, the setting returns.

Example: When setting [Melody A], for which FOMA card security functions are set, as a ring tone

When one's own FOMA card is taken out or is replaced with another's FOMA card, ring tone returns to default setting. When one's own FOMA card is put back, the ring tone returns to [Melody A].

- FOMA card security functions cannot be set for data received using Ir communication or data transmission functions, and still pictures/movies, etc. shot with the FOMA terminal.
- It is possible to move or delete data or files for which FOMA card security functions are set even when another's FOMA card is inserted.
- Running i-αpli by selecting highlighted text in i-mode mail details screen cannot be performed or retrieved when FOMA card security functions are set.
- If the FOMA card is replaced with another's FOMA card after i-αpli stand-by is set, the set i-αpli cannot be activated in stand-by, and the image set in Stand-by display appears.

FOMA card type

Note the following differences between "FOMA card (blue)" and "FOMA card (green/white)" used on the FOMA terminal.

Function	FOMA card (blue)	FOMA card (green/white)	Page
Number of phone number digits available in the FOMA card phonebook	Up to 20 digits	Up to 26 digits	P. 76
Client certificate operations for FirstPass	Not available	Available	P. 169
Use of WORLD WING	Not available	Available	P. 388
Service number	Not available	Available	P. 379

About WORLD WING

WORLD WING is a DOCOMO's FOMA international roaming service that makes it possible to use the mobile phone number registered in Japan to make and receive calls even overseas by the FOMA card (green/white) and supported FOMA terminal. Also, SH-02A is available in the DOCOMO's 3G roaming service area only. When using this service in the GSM service area, the FOMA card is inserted into GSM supported terminal.

- If subscribed to the FOMA service after September 1, 2005, subscription for "WORLD WING" is not required. However, if subscription for "WORLD WING" is canceled at or after subscription for the FOMA service, subscription for "WORLD WING" is required again.
- If subscribed to the FOMA service before August 31, 2005 but not subscribed to "WORLD WING", subscription for "WORLD WING" is required.
- Some payment plans are not available.
- When the FOMA card (green/white) is lost or stolen overseas, promptly contact DOCOMO and conduct a procedure for canceling the use of service. Refer to General Inquiries on the back of this manual for inquiries. Note that transmission/calling charges after the FOMA card is lost or stolen are incurred to the subscriber.

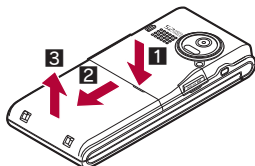
Attaching/Removing battery pack

Use the Battery Pack SH21 exclusive to the FOMA terminal.

- Turn off the power, close the FOMA terminal, and hold it in your both hands before attaching or removing the battery pack.

■ Attaching battery pack

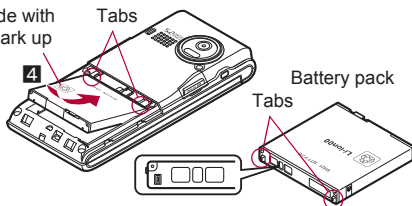
- 1 Lightly push the back cover in the direction of the arrow (1), slide approximately 3 mm (2) and remove the back cover (3).



- 2 Attach the battery pack (4).

- The battery pack has tabs that make it easy to attach. Attach the battery pack with a recycle mark side faced up.
- Pull the FOMA card lever up if it is down (P. 35).

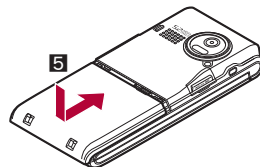
Face the side with a recycle mark up



Battery pack connector terminal side

- 3 Attach the back cover (5).

- Position the back cover as shown in the illustration and then push the back cover and slide into place.

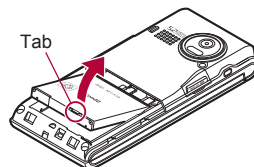


■ Removing battery pack

- 1 Follow step 1 of “Attaching battery pack” to remove the back cover.

- 2 Remove the battery pack.

- The battery pack has a tab that makes it easy to remove. Press the tab with your fingers without placing too much force. Lift the battery pack to remove.



- Using unnecessary force when attaching or removing the battery pack may damage the connector terminal for the battery pack (charger terminal) on the FOMA terminal.
- Firmly close the back cover. If not closed firmly, the back cover may come off and the battery pack may fall out due to vibration.

Charging

The battery pack is not fully charged at the time of purchase. Be sure to charge the battery using the exclusive AC or DC adapter (sold separately) before use.

■ Cautions when charging

- Do not charge for long periods of time with the power left on. If the FOMA terminal is left on after charging is complete, the battery pack charge decreases.
In such cases, the AC or DC adapter charges the battery again. However, depending on when the FOMA terminal is disconnected from the AC or DC adapter, the battery charge level may be low, the battery alert tone may sound, or the battery may only be usable for a short time.
- When the battery is empty and terminal is recharging, charging LED may not illuminate immediately.
- If the battery empty alert is displayed, the alert tone sounds and the power cannot be turned on, charge the battery for a while.
- If the battery empty alert is displayed and charging begins within 60 seconds of the alert tone, the status returns to normal.
- While charging, terminal may not turn on even when charging LED is illuminated in red. Charge longer and try turning power on again.
- Frequently recharging the battery when its power is still remaining enough may shorten the life of the battery pack. It is recommended to use the battery to a certain level before recharging.
- The battery pack cannot be charged by itself.

■ Estimated charge times and LED display

The following figures are estimated times for charging an empty battery pack with the FOMA terminal turned off.

FOMA AC Adapter 01/02	Approx. \$\$ min
FOMA DC Adapter 01/02	Approx. \$\$ min

- Charging LED illuminates in red when charging and turns off when charging is completed.
- Check that the battery pack has been properly attached when charging LED flashes red. The LED also flashes red when the battery pack has reached the end of its service life.
- The battery pack can also be charged with the FOMA terminal turned on (🔴 on the display flashes during charging). When charging is complete, charging LED turns off, and 🔴 on the display changes to 🟢.
- When the battery becomes warm, charging may automatically stop even if the battery has not been fully charged. Charging resumes after the temperature lowers to an appropriate temperature. While charging is stopped, charging LED turns off (🔴 on the display flashes while stopped).

■ Estimated times of use when fully charged

Continuous talk time	FOMA/3G	Voice call: Approx. \$\$ min
		Videophone call: Approx. \$\$ min
Continuous stand-by time	FOMA/3G	When mobile: Approx. \$\$ hr
		At rest: Approx. \$\$ hr
1Seg watching time		Approx. \$\$ min

- Continuous talk time is estimated as the usage time at normal transmission signal strength, and continuous stand-by time is estimated as the usage time while moving with the FOMA terminal folded at normal signal strength. Using i-mode reduces talk (transmission)/stand-by time. When i-Channel is subscribed, information is automatically received and updated, so talk (transmission)/stand-by time will be reduced. In addition, when shooting or editing an image, watching 1Seg, composing i-mode mail, activating the downloaded i-αppli or the i-αppli stand-by, or using MUSIC Player, i-motion player or data communication, the talk (transmission)/stand-by time will be reduced even if calls or i-mode transmission are not made. Some i-αppli software may continue transmission even after downloading. To avoid this, set not to connect in advance.

- The actual usage time is a combination of stand-by time and talk time, and the longer the talk time, the shorter the stand-by time becomes.
- 1Seg watching time is estimated as the watching time at normal transmission signal strength with the Flat-plug Stereo Earphone Set P01 (sold separately) used.
- Talk (transmission)/stand-by time may be reduced by about half or 1Seg watching time may be shortened depending on battery pack status, function used, temperature and other environmental conditions, or signal strength (no signal or weak signal).

■ Battery pack service life

- Battery pack is a consumable product. Service time per charge is gradually reduced every time the battery is charged.
- When service time per charge is reduced to about half of the default time, this means that the battery pack is approaching the end of its service life. In such a case, it is recommended to replace the battery pack as soon as possible. Depending on usage, the battery pack may swell as it approaches the end of its service life but this will not cause problems.
- If i-appli, Videophone, or 1Seg is used while charging for a long time, the service life of the battery pack may become shorter than estimated.
- To protect the environment, return used batteries to NTT DOCOMO, any DOCOMO retailer, or a recycling agency.



Li-ion00

■ About charging batteries

- Refer to user's guide of FOMA AC Adapter 01/02 (sold separately), FOMA AC Adapter 01 for Global use (sold separately), or FOMA DC Adapter 01/02 (sold separately).
- FOMA AC Adapter 01 covers only 100V AC. FOMA AC Adapter 02/ FOMA AC Adapter 01 for Global use covers from 100 to 240V AC.

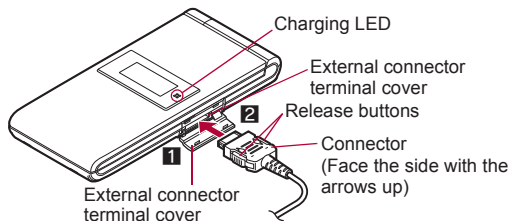
- The shape of the plug for the AC adapter is for 100V AC (for domestic use). To use the AC adapter of 100 to 240V AC overseas, a conversion plug adapter that is compatible with the voltage of your country of stay is required. Do not use a transformer for use overseas to charge the battery.

Charging by using AC adapter/DC adapter

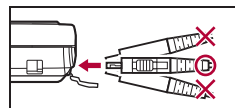
[Read "FOMA AC Adapter 01/02 (sold separately) and FOMA DC Adapter 01/02 (sold separately) user's guide" carefully.]

- Battery pack can be charged even with the FOMA terminal opened.

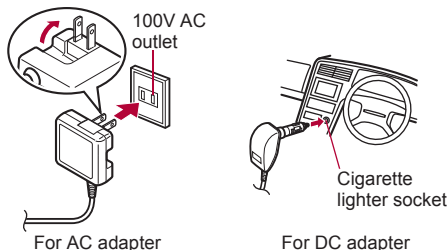
- 1 Open the external connector terminal cover (1) and insert the AC or DC adapter connector horizontally into the external connector terminal (2).



- Check the direction (See diagram) of the connector, keep it parallel with the FOMA terminal and firmly push all the way in until it clicks.

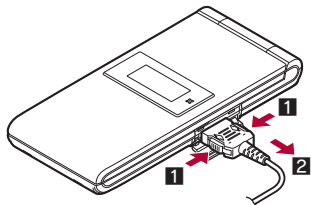


- 2** When inserting the AC adapter power plug into an outlet or inserting the DC adapter power plug into a car cigarette lighter socket, Charge start sound is heard, charging LED illuminates, and charging starts.



- 3** When Charge end sound is heard and charging LED turns off, charging is complete.

- When removing the connector, always hold the release buttons on both sides (1) and unplug it by pulling out horizontally (2).



- Do not forcibly insert or remove. May cause damage to the external connector terminal and the connector.

- Pull the adapter out of the outlet or cigarette lighter socket if it will not be used for a long time.
- Do not forcefully pull the external connector terminal cover. May damage the cover.
- Do not place objects near the FOMA terminal when charging. May damage the FOMA terminal.

When using a DC adapter

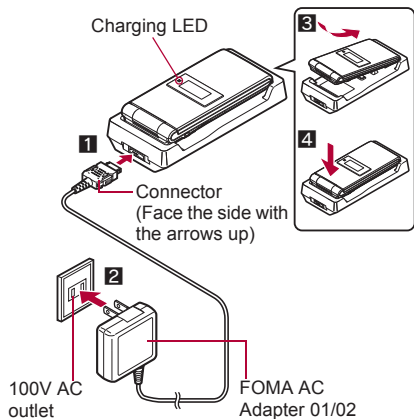
- The DC adapter should only be used in negative grounded vehicles (12 and 24V DC).
- Do not use with the car engine shut off. May drain the car battery.
- The DC adapter fuse (2A) is a consumable. For replacement, purchase a new fuse at a local automobile supply shop.
- Refer to the FOMA DC Adapter 01/02 user's guide for details.

Charging by using desktop holder

[Read "Desktop Holder SH23 (sold separately) user's guide" carefully.]

- Battery pack can be charged even with the FOMA terminal opened.

- 1** Face the side with the arrows of the AC adapter connector up and insert it into the connector terminal of the desktop holder (1).
 - Keeping the connector parallel with the desktop holder, firmly push it all the way in until it clicks.
- 2** Insert the AC adapter power plug into an outlet (2).
- 3** When placing the FOMA terminal in the desktop holder, Charge start sound is heard, charging LED illuminates, and charging starts.
 - Place the FOMA terminal as the figure shows (3), and push it down in the direction of the arrow until it clicks (4).



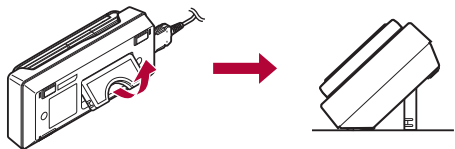
4 When Charge end sound is heard and charging LED turns off, charging is complete.

- Hold the desktop holder and lift the FOMA terminal out.

Making the desktop holder stand up

Make the stand behind the desktop holder stand up so that charging becomes available with the desktop holder stood up.

- Do not force to make the stand behind stand up.



- Pull the AC adapter out of the outlet when left unused for a long period of time.
- When Charge start sound is not heard or when charging LED does not illuminate, check that the FOMA terminal is placed securely in the desktop holder (except when terminal is turned off, Manner mode is set or Charge start sound is Silent).
- When placing the FOMA terminal in the desktop holder, be careful that the strap is not caught in between the handset and the desktop holder.

Battery level

Checking battery level



	Battery level is still sufficient.
	Battery level is low.
	Battery is almost empty. Charge the battery.
	Battery is empty (Power will turn off soon).
	Battery pack is being charged.


Checking battery level with sound and display

1 In the Custom menu, select [Settings] ▶ [General settings] ▶ [Check status] ▶ [Battery level].

Graphic			
Sound	Three beeps	Two beeps	One beep
Status	Battery is sufficiently full.	Battery is running low.	Battery is almost empty. Charge the battery.

- Wait approximately 2 seconds and the display disappears.
- The battery level sound is heard at the volume set in Key/Standby i-motion (☞ P. 86).

If battery runs out

[Battery empty. Unsaved data will be lost. Ending current operation] appears if battery starts to run out (Press  to clear the message). After a while, an alert tone sounds. The warning screen stating that the battery runs out appears, handset operations are disabled and power turns off after approximately 60 seconds.



- During a voice/Videophone call, the alert tone sounds and [Battery empty. Unsaved data will be lost. Ending current operation] appears. The call is disconnected after approximately 20 seconds. At the same time, the screen above appears and after approximately 60 seconds, the power turns off.
- Alert tone does not sound when Manner mode or Public mode (Drive mode) is set (Alert tone sounds during a call).

Power ON/OFF

Turning power ON/OFF









Turning power ON

1 Press (for 2+ seconds).

- It may take some time for the wakeup screen to appear.
- The wakeup screen appears followed by the initial settings screen. Proceed to Initial setting (☞ P. 44).


- If initial settings have been completed, the screen shown on the right appears when power is turned on. This screen is called the “stand-by display”.

Welcome mail

- “Welcome デコメアニメ ” (Welcome Decome-Anime ) and “緊急速報「エリアメール」のご案内” (Information of Early Warning “Area Mail”) are saved by default.
- To check a welcome mail: In stand-by, press   select the stock icon  (mail message) .
- For details on the following operations (☞ P. 134)



Stand-by display

- If initial settings are not yet completed, the setting screen appears every time the power is turned on.
- If the FOMA card is not inserted, [Insert UIM] and a FOMA card error appear (☞ P. 30).
- When [Enter PIN1 code] appears, enter the PIN1 code (☞ P. 105).
- When a FOMA card is replaced with a new card, the terminal security code (four to eight digits) must be entered after turning on the terminal. If a correct terminal security code is entered, stand-by display appears. When a wrong terminal security code is entered five times, the power is turned off. However, turning on the power again is possible.
- When  appears, the handset is outside the service area or in a place with no signal. Move to a place where the icon disappears.

Turning power OFF

1 Press (for 2+ seconds).

- It may take some time for the power to be turned off (The end screen appears on the display until the power is turned off).

Select language

Changing screen display to English

1 In the Custom menu, select [Settings] ▶ [一般設定] ▶ [Bilingual] ▶ [English].

- To switch the display language from English to Japanese: In the Custom menu, select [Settings] ▶ [General settings] ▶ [Select language] ▶ [日本語].
- If a FOMA card is inserted, settings are saved to the FOMA card as well. When the setting of the FOMA terminal handset and the setting of the inserted FOMA card are different, the setting in the FOMA card is prioritized.

Initial setting


Making initial setting

The initial settings screen appears automatically when the power is turned on for the first time. Each setting item can also be set from Menu (When the initial settings are complete, the stand-by display appears).

- Date and time settings
 - Key/Standby i-motion
 - Font size settings
 - Change terminal security code
 - Location request menu
- When items that have not been set remain, the setting screen appears every time the power is turned on.

- 1 Set the date and time (☞ P. 44).
- 2 Register a terminal security code (☞ P. 105).
- 3 Set the Key/Standby i-motion (☞ P. 86).
- 4 Set GPS Location provision ON/OFF (☞ P. 286).
- 5 Set the font size (☞ P. 101).

- When the initial settings are complete, the software update function confirmation screen appears. Read the description and select [Agree] (When the initial settings are made from the menu or the software update is set to other than [auto-update], the confirmation screen does not appear).

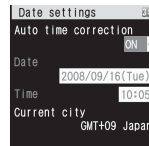
- Press  to cancel the initial settings.


Date settings

Setting date and time

Set the date and time on the FOMA terminal.

- 1 In the Custom menu, select [Settings] ▶ [General settings] ▶ [Date settings].



- 2 Select the [Auto time correction] field ▶  ▶ select the setting.

- ◆ Select [ON] ▶ .
- ◆ Select [OFF] ▶ select the [Date] field ▶  ▶ enter the date ▶  ▶ select the [Time] field ▶  ▶ enter the time (24-hour format) ▶ .

- When entering month, day and time, add 0 before numbers one through nine (example: 01, 02, 03, etc.).
- Set the date and time from 00:00 January 1, 2001 to 23:59 December 31, 2050.

- When Limit settings is set to [Enable], the terminal security code must be entered in the Date settings.

- The date and time that are set are saved even if the battery pack is removed, but if the battery pack remains removed for approximately 50 seconds or more, the settings are reset. Also, if the battery remains empty, the settings may be reset. When this happens, set again after charging the battery.
- If the date and time are not set correctly, the following functions cannot be used properly.

■ Redial, Received calls	■ Auto power ON/OFF
■ Alarm	■ Schedule
■ SSL (authentication)	■ i-appli Auto start
■ Starting i-appliDX	■ Reception, Recording
■ Machi-chara	■ Software update
■ Pattern definitions update	
■ Record message (voice), Record message (Videophone calls)	
■ Camera image titles/shooting date	
■ Playback of i-motion or music data with expiration date/period for replay	
■ View of e-books/e-dictionaries/e-comics with expiration date/period for browse	

When Auto time correction is set to [ON]

- When the power is turned on, the FOMA terminal adjusts the time by connecting to the network's time information.
- If the FOMA terminal does not adjust the time even when the power is turned on, turn off the power and restart.
- Time may not be adjusted depending on the signal status.
- Time may be off by a few seconds.
- When time difference is adjusted overseas, the local time and date and 🌐 appear in Redial, Received calls, Received/Sent messages history (SMS only), and Received/Sent messages list. The received/sent messages are not displayed in order of the displayed time and date but the mail reception/send.
- 🌐 does not appear in the Unsent messages for mail messages. If the date order display is set for the Unsent messages, unsent messages are displayed in the order of the displayed time and date.

- Time correction may not be performed depending on the overseas network.
- During overseas use, Japan time and local time (or time set in City) appear in the dual display except for the following cases.
 - When Auto time correction is set to [ON] and time correction information is not being received from an overseas network
 - When Auto time correction is set to [OFF] and City is set to the city in the same time zone as Japan

■ Changing time zone manually <City>

- 1 In the Date settings screen, select the [Auto time correction] field ▶ ▶ [OFF] ▶ .
- 2 Select a time zone ▶ .
- 3 Select a city ▶ ▶ .

Notify caller ID

Notifying the other party of your phone number

Display your number (caller ID) on the other party's phone (display) when making a voice/Videophone call.

- Handset number (caller ID) is important personal information. Be very careful about your caller ID setting.
- The Notify caller ID function is available only on compatible phone devices.

Setting Notify caller ID/No caller ID in advance

1 In the Custom menu, select [Settings] ▶ [NW Services] ▶ [Notify caller ID].

2 Select [Notify caller ID].

- To check the setting: Select [Check setting].

3 Select the setting.

- To notify caller ID: Select [Yes].
- To not notify caller ID: Select [No].

- Notify caller ID setting cannot be set from outside the service area.

Own number

Checking your own phone number

- When checking your own phone number during a call ☎ P. 49

1 In the Custom menu, press **[0]**.

- To switch between Number A and Number B (when 2in1 [Dual mode] is used): Press **[0]**.

- When changing the Number B of 2in1, use any of the following methods to obtain the correct Number B.
 - Set 2in1 function OFF and then perform 2in1 setting again to set 2in1 function ON
 - Check the 2in1 subscription
- When a FOMA card exchange (2in1 subscriber → 2in1 nonsubscriber) is performed, set 2in1 function OFF.
- When a FOMA card exchange (2in1 subscriber → 2in1 subscriber) is performed, check the 2in1 subscription.
- For details on Owner information ☎ P. 354