

First Step Guide

Before Using Handset	ii
Handset Functions	vii
General Notes	xii
Customer Service	xv

See Online User Guide for "Safety Precautions."

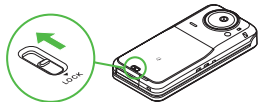
Before Using Handset

Accessory

- Battery (SHBCC1)
- Desktop Holder (SHECJ1)

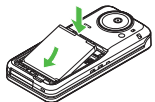
Battery Installation

1 Unlock and remove cover

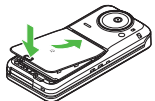


- Slide lever as shown.

2 Insert battery

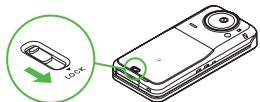


3 Close cover



- Fit cover top into slot, then press down firmly.

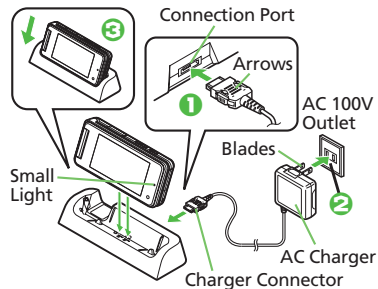
4 Lock cover



- Slide lever as shown until it clicks.

Charging (Desktop Holder)

Use specified AC Charger ZTDAA1 (sold separately) only.



1 Insert AC Charger connector into Desktop Holder until it clicks

- Connection Port is on the back of Desktop Holder.

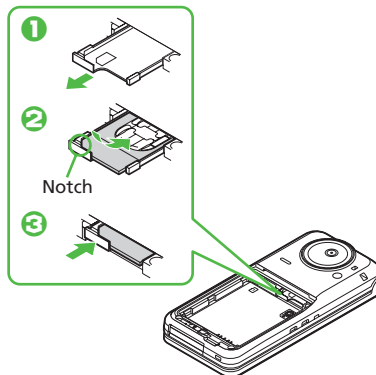
2 Plug AC Charger into AC outlet

3 Place handset onto Desktop Holder

- Small Light illuminates red while charging.
- Small Light goes out when battery is full.

4 After charging, disconnect handset, then unplug AC Charger

USIM Card Installation



1 Using Tab, pull out Tray until it clicks

2 Slide in USIM Card with IC chip facing up

3 Push in Tray fully

4 Insert battery (P.ii)

- First power off handset and remove battery.
- Do not force USIM Card into/out of handset.
- USIM Card must be inserted to use handset.

USIM PIN

4-digit code (**9999** by default); activate PIN Entry to restrict usage. Change PIN as needed.

■ PIN Lock & Cancellation (PUK Code*)

Entering incorrect PIN three consecutive times activates PIN Lock, limiting handset use. Enter PUK Code to unlock. For details, contact SoftBank Mobile Customer Center, General Information.

*Each USIM Card has a unique Personal Unlocking Key (PUK Code). Do not disclose it to unauthorized persons.

Before Using Handset

Manner Mode

■ Minding Mobile Manners

Please use handset responsibly. Inappropriate handset use can be both dangerous and bothersome. Please take care not to disturb others when using handset. Adjust handset use according to your surroundings.

Activating/Canceling Manner Mode

(Long)

Security Codes

■ Handset Code

9999 by default; use or change some functions.

■ Center Access Code

4-digit code selected at contract; access Optional Services via landlines or change contract details.

■ Network Password

4-digit code selected at contract; restrict incoming/outgoing calls (Call Barring).

- Message appears for incorrect code entries; retry.
- If Network Password is incorrectly entered three times consecutively, Call Barring settings are locked. To resolve, Network Password and Center Access Code must be changed. For details, contact SoftBank Mobile Customer Center, General Information.

Specifications

Weight*	●● g
Continuous Talk Time*	●● minutes (3G) ●● minutes (GSM)
Continuous Standby Time* (handset closed)	●● hours (3G) ●● hours (GSM)
Charging Time* (power off)	AC Charger: ●● minutes In-Car Charger: ●● minutes
Dimensions* (W x H x D)	● x ●● x ● mm (handset closed, without protruding parts)
Maximum Output	●● W (3G) ●● W (GSM)

• Values calculated with battery installed.

*Approximate value

■ Water Resistance

9345H complies with IPX5 and IPX7 (JIS IP Codes) water protection standards. (Tested by SoftBank.)

- Handset is resistant to fresh/tap water between 5°C - 35°C.
- Malfunction resulting from misuse is not covered by the warranty.

Display Indicators & Key Assignments

	Signal strength		Manner mode active
	Packet transmission available (3G)		Battery strength
	Packet transmission available (GSM)		New Voicemail
	Unread mail		Alarm set
	Memory Card in use		

	Open Messaging menu or execute Softkey functions
	Open Shortcuts menu. In text entry windows, toggle upper/lower case
	Delete entries, escape/return to previous window
	Initiate/answer calls
	Enter numbers/characters
	Open Dictionary
	Select handset mode

Multi Selector
Select menu items, move cursor, or scroll pages, etc. Multi Selector operations are indicated in this guide as shown below:

- : Press the center
- ◀: Press the left side
- ▶: Press the right side
- ⬇: Press the bottom

	Open Yahoo! Keitai Main Menu or execute Softkey functions
	Activate TV or switch entry mode
	Turn handset power on/off

Side Keys
Side Key operations are indicated in this guide as shown below:

- ⏪: Toggle External Display view
- ⏩: Press ⏪ or ⏩

Before Using Handset

Menu List

Messaging	Settings	Battery Meter	S! Circle Talk	Locks
Received Msg.	Recorder Contents	Doc./Rec.	Neat chat	Software Update
Create Message	Camera	Dictionary	Blog Tool	Master Reset
Retrieve New Msg.	Photo Camera	Search	Phone	Connectivity
Drafts	Video Camera	Document Viewer	Phone Book	Bluetooth
Templates	Scan Barcode	Notepad	Add New Entry	Infrared
Sent Messages	Scan Card	Scratch Pad	Information	IC Transmission
Unsent Messages	Scan Text	ASCII Art	Call Log	USB Mode
Chat Folder	Review	Voice Recorder	Play Messages	USB Charge
Server Mail Box	Photo Settings	Barcode/Scan	Call Voicemail	Memory Card
Create New SMS	Video Settings	Phone Help	Category Control	Backup/Restore
Settings	Set Camera Key	Data Folder	My Details	Call
Memory Status	Entertainment	Pictures	Speed Dial/Mail	Call Time/Data Counter
Yahoo! Keitai	Mobile Widget	DCIM	Mail Groups	Answer Phone
Yahoo! Keitai	S! Quick News	Ring Songs•Tones	S! Addressbook Backup	Voicemail/Divert
Bookmarks	S! Information Channel/Weather	S! Appli	Ph.Book Settings	Video Call
Saved Pages	BookSurfing	Widget	Call Log Setting	Show My Number
Enter URL	e-Book Viewer	Music	Manage Entries	Missed Calls
History	Tools	Videos	Settings	Int'l Calling
PC Site Browser	PIM/Lifestyle	Lifestyle-Appli	Phone	Call Barring
Browser Settings	Calendar	Books	Mode Settings	Decoration Call
S! Appli	Alarms	Customized Screen	Display	Auto Answer
S! Appli Library	Wakeup TV	Status Templates	External Display	Call Waiting
Osaifu-Keitai	Relaxation Time	Decoration Call	Customize	Network
Notification History	Tasks	Flash@	Sounds & Alerts	Select Network
Settings	Calculator	Other Documents	Date & Time	Select Service
Information	Expenses Memo	Memory Status	Set Key Light	Offline Mode
TV	Osaifu-Keitai	Media Player	言語選択 (Language)	Retrieve NW Info
Digital TV	Simulated Call	Music	User Dictionary	Location Info
TV Player	Clocks/Gauges	Videos	Set Key Shortcut	Network Info
TV-Image Folder	Stopwatch	Streaming	Motion Control	External Device
TV Link	Countdown Timer	MTP Mode	Ringer Output	
TV Listing	World Clock	Settings	Earpiece Volume	
Familink Remote	Hour Minder	Communication	Change Menu	
Reservation List	Pedometer	S! Friend's Status	Double Number	

Handset Functions

Basic Operations

Handset Power On/Off

■ Power On

(Long)

After Power On Graphic, follow these steps:

In Main Menu, change interface to English (below).

■ Power Off

(Long)

English Interface

設定 → Language → English

Network Settings

Retrieve Network Information to use Network-related services; the first time you press , , or , a prompt appears.

, , or → Yes → Retrieval starts

• Retrieval automatically sets Clock.

My Phone Number

→ 0**

Calling

Voice Call

Enter number →

• → Call ends

Redialing

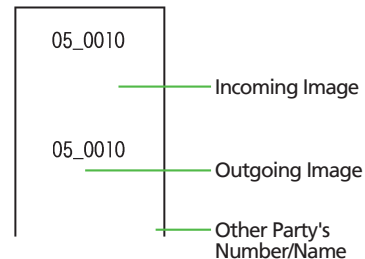
→ A record →

• → Call ends

Video Call

Enter number → → Video Call →

• → Call ends



Handset Functions

International Call

Enter number → ☎ → *Int'l Call* → ● →

A country → ● → 🌐

- ☎ → Call ends
- 9345H is Global Roaming eligible. For details, contact SoftBank Mobile Customer Center, General Information.

Answering a Call

When a call arrives, 📞

- ☎ → Call ends

Answer Phone

■ Activating

📞 (Long)

- To cancel, 📞 (Long)

■ Playing Messages

📞 → A record → ●

- To stop, ●

Text Entry

Switching Entry Modes

In text entry windows, ☎ → A mode → ●

→ Enter text

Example: Entering no

In text entry windows, ☎ → *Abc* → ● →

📞 📞 → ● → 📞 📞 📞 → ●

Messaging

SMS/S! Mail

■ SMS

Exchange up to 160 alphanumeric with SoftBank handsets.

■ S! Mail

Exchange up to 30,000 characters with e-mail compatible handsets, PCs, etc; attach media files, etc.

Customizing Address

Change alphanumeric before @ of the default handset mail address. Customizing handset mail address helps reduce spam.

☎ → *Settings* → ● → *Address Settings* →

● → *English* → ● → Onscreen instructions

Sending Messages

☎ → *Create Message* (S! Mail) or *Create New SMS* → ● → Enter recipient → Enter subject (S! Mail) → Attach files (S! Mail) → Enter text → 📧

Receiving Messages

Information window opens for new mail.

● to open message list.

Phone Book

Phone Book Entry Items

■ Phone Number

Enter up to five numbers on handset (32 digits each).

■ Mail Address

Enter up to five addresses on handset (128 single-byte alphanumeric each).

Saving to Phone Book

● → *Phone* → ● → *Add New Entry* → ● →

Last Name: → ● → Enter → ● → *First Name:*

→ ● → Enter → ● → *Add Phone Number:*

→ ● → Enter number → ● → An icon → ● →

Add Email Address: → ● → Enter address

→ ● → An icon → ● → 📧

Editing Entries

🔍 → An entry → ☎ → *Edit* → ● → An item

→ ● → Edit → ● → 📧

Dialing via Phone Book

🔍 → Enter reading → A name → ● →

A phone number → 📞

Voicemail

Activating

● → *Settings* → ● → *Call* → *Voicemail/Divert* → ● → *Voicemail* → ● → *Activate* → ● → *Always or No Answer* → ● → Ring time (for *No Answer*) → ●

Playing Messages

● → *Phone* → ● → *Call Voicemail* → ● →

Follow the voice guidance

Mobile Camera

Capturing Still Images

● → *Camera* → ● → *Photo Camera* → ●

→ Frame image on Display → ● → ●

Recording Video

● → *Camera* → ● → *Video Camera* → ● →

Frame image on Display → ● → ● → ●

Handset Functions

Digital TV

Area Setup

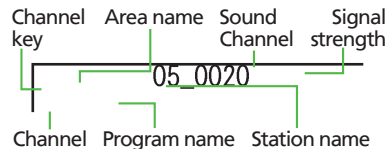
Follow these steps when activating TV for the first time:

- ☺ → Yes → A region → A prefecture → A locality

Watching TV

- ☺ → A channel → to adjust volume
- To end, → Yes

Panel & Indicator Descriptions



Recording/Playing Programs

Recording

- ☺ → A channel → (Long) to start → (Long) to end

Playing

- ☺ → TV Player → A file
- To stop, ☺ (Long)

Yahoo! Keitai

Using Yahoo! Keitai

- ☺ → Highlight menu item

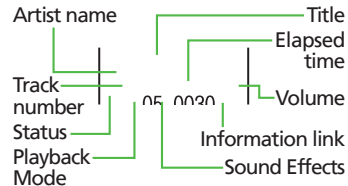
Using PC Site Browser

- ☺ → Yahoo! Keitai → PC Site Browser → Homepage → (Onscreen prompts) Highlight menu item

Media Player

Playing Music

- ☺ → Media Player → Music → My Music → Music or Ring Tones → All Music → A file



Adding Playlists

- ☺ → Media Player → Music → My Music → Music or Ring Tones → Add New Playlist → Enter name

Managing Files

Opening Files

- ☺ → Data Folder → A folder → A file

Format Memory Card

- ☺ → Settings → Connectivity → Memory Card → Format Card → Yes → Handset Code → Yes

Software Update

Precaution

Before updating software, end all active functions/applications.

Updating Software

- ☺ → Settings → Software Update → Software Update → Onscreen instructions

External Display

With handset closed, open the following items/information on External Display.

- Schedule, Memo, UV, Pedometer, Weather, News, Balance Info, Compact Mirror, Information, Help

Home Panel appears when handset is closed. Press to open Active Menu; brief function information appears. For a detailed description, use to select an item and press (Details window opens).

- To return to Home Panel, press in Details window.

General Notes

Electromagnetic Waves

For body-worn operation, this phone has been tested and meets RF exposure guidelines when used with accessories containing no metal, that position handset a minimum of 15 mm from the body. Use of other accessories may not ensure compliance with RF exposure guidelines.

CE Declaration of Conformity

CE 0168

Hereby, Sharp Telecommunications of Europe Ltd, declares that 934SH is in compliance with the essential requirements and other relevant provisions of Directive 1999/5/EC. A copy of the original declaration of conformity for each model can be found at the following Internet address: <http://www.sharp.co.jp/k-tai/>

Battery - CAUTION

Use specified battery or Charger only.

Non-specified equipment use may cause malfunctions, electric shock or fire due to battery leakage, overheating or bursting.

Do not dispose of an exhausted battery with ordinary refuse; always tape over battery terminals before disposal. Take battery to a SoftBank Shop, or follow the local disposal regulations.

Charge battery in ambient temperatures between 5°C and 35°C; outside this range, battery may leak/overheat and performance may deteriorate.

Mobile Light

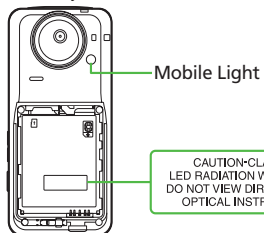
Do not use Mobile Light near people's faces.

Eyesight may be temporarily affected leading to accidents.

CAUTION:

Use of controls, adjustments or performance of procedure other than those specified herein may result in hazardous radiation exposure. As the emission level from Mobile Light LED used in this product is harmful to the eyes, do not attempt to disassemble the cabinet. Servicing is limited to qualified servicing station only.

EN50825-1:1994 A1:2002 & A2:2001



Mobile Light LED Properties

- a) Emission Duration: Continuous
- b) Wavelength
 - White: 400 - 700 nm
- c) Maximum Emission Output
 - White: 230 μW (1.2 mW inside handset)

European RF Exposure Information

Your mobile device is a radio transmitter and receiver. It is designed not to exceed the limits for exposure to radio waves recommended by international guidelines. These guidelines were developed by the independent scientific organization ICNIRP and include safety margins designed to assure the protection of all persons, regardless of age and health.

The guidelines use a unit of measurement known as the Specific Absorption Rate, or SAR. The SAR limit for mobile devices is 2 W/kg. As mobile devices offer a range of functions, they can be used in other positions, such as on the body as described in this user guide*.

Highest SAR value:

Model	At the Ear**	On the Body
934SH	●● W/kg	●● W/kg

As SAR is measured utilizing the device's highest transmitting power the actual SAR of this device while operating is typically below that indicated above. This is due to automatic changes to the power level of the device to ensure it only uses the minimum level required to reach the Network. The World Health Organization has stated that present scientific information does not indicate the need for any special precautions for the use of mobile devices. They note that if you want to reduce your exposure then you can do so by limiting the length of calls or using a handsfree device to keep the mobile phone away from the head and body.

*Please see Electromagnetic Waves on P.xii for important notes regarding body-worn operation.

**Measured in accordance with international guidelines for testing.

FCC Notice

• This device complies with part 15 of the FCC Rules. Operation is subject to the following two conditions:

(1) This device may not cause harmful interference, and (2) this device must accept any interference received, including interference that may cause undesired operation.

• Changes or modifications not expressly approved by the manufacturer responsible for compliance could void the user's authority to operate the equipment.

FCC Information to User

This equipment has been tested and found to comply with the limits of a Class B digital device, pursuant to Part 15 of the FCC Rules. These limits are designed to provide reasonable protection against harmful interference in a residential installation. This equipment generates, uses and can radiate radio frequency energy and, if not installed and used in accordance with the instructions, may cause harmful interference to radio communications. However, there is no guarantee that interference will not occur in a particular installation; if this equipment does cause harmful interference to radio or television reception, which can be determined by turning the equipment off and on, the user is encouraged to try to correct the interference by one or more of the following measures:

1. Reorient/relocate the receiving antenna.
2. Increase the separation between the equipment and receiver.
3. Connect the equipment into an outlet on a circuit different from that to which the receiver is connected.
4. Consult the dealer or an experienced radio/TV technician for help.

General Notes

■ FCC RF Exposure Information

Your handset is a radio transmitter and receiver. It is designed and manufactured not to exceed the emission limits for exposure to radio frequency (RF) energy set by the Federal Communications Commission of the U.S. Government.

The guidelines are based on standards that were developed by independent scientific organizations through periodic and thorough evaluation of scientific studies. The standards include a substantial safety margin designed to assure the safety of all persons, regardless of age and health. The exposure standard for wireless handsets employs a unit of measurement known as the Specific Absorption Rate, or SAR. The SAR limit set by the FCC is 1.6 W/kg.

Highest SAR value:

Model	FCC ID	At the Ear	On the Body
934SH	APYHRO00099	0.377 W/kg	0.592 W/kg

This device was tested for typical body-worn operations with the back of the handset kept 1.5 cm from the body. To maintain compliance with FCC RF exposure requirements, use accessories that maintain a 1.5 cm separation distance between the user's body and the back of the handset. The use of beltclips, holsters and similar accessories should not contain metallic components in its assembly.

The use of accessories that do not satisfy these requirements may not comply with FCC RF exposure requirements, and should be avoided.

The FCC has granted an Equipment Authorization for this model handset with all reported SAR levels evaluated as in compliance with the FCC RF emission guidelines. SAR information on this model handset is on file

with the FCC and can be found at <https://fjallfoss.fcc.gov/oetcf/eas/reports/GenericSearch.cfm> under the Display Grant section after searching on the corresponding FCC ID (see table on the left). Additional information on Specific Absorption Rates (SAR) can be found on the Cellular Telecommunications & Internet Association (CTIA) Website at <http://www.phonefacts.net>.

Customer Service

SoftBank Mobile Customer Center

From a SoftBank handset, dial toll free at

157 (General Information)

113 (Customer Assistance)

SoftBank Mobile Global Call Center

From outside Japan, dial

+81-3-5351-3491 (International charges apply)

Call this number immediately if handset/USIM Card is lost or stolen while outside Japan.

■ Call these numbers toll free from landlines.

Subscription Area	Service Center	Phone Number
Hokkaido, Aomori, Akita, Iwate, Yamagata, Miyagi, Fukushima, Niigata, Tokyo, Kanagawa, Chiba, Saitama, Ibaraki, Tochigi, Gunma, Yamanashi, Nagano, Toyama, Ishikawa, Fukui	General Information	0088-240-157
	Customer Assistance	0088-240-113
Aichi, Gifu, Mie, Shizuoka	General Information	0088-241-157
	Customer Assistance	0088-241-113
Osaka, Hyogo, Kyoto, Nara, Shiga, Wakayama	General Information	0088-242-157
	Customer Assistance	0088-242-113
Hiroshima, Okayama, Yamaguchi, Tottori, Shimane, Tokushima, Kagawa, Ehime, Kochi, Fukuoka, Saga, Nagasaki, Oita, Kumamoto, Miyazaki, Kagoshima, Okinawa	General Information	0088-250-157
	Customer Assistance	0088-250-113