



故障お問い合わせ先

■ドコモの携帯電話からの場合 ■一般電話などからの場合

i (局番なしの) **113** (無料) **☎0120-800-000**
 ※一般電話などからはご利用いただけません。※携帯電話、PHS (他社) からのご利用いただけます。
 ※一部のIP電話からは接続できない場合があります。

受付時間 24時間 (年中無休)

●番号をよくご確認のうえ、お間違いないようにおかけください。
 ●各種手続き、故障・アフターサービスについては、上記お問い合わせ先にご連絡いただくか、ドコモホームページ、iモードサイトにてお近くのドコモショップなどにお問い合わせください。
 ドコモホームページ <http://www.nttdocomo.co.jp/>
 iモードサイト [i Menu](#) ▶[お客様サポート](#) ▶[ドコモショップ](#)

海外での故障について

<ネットワークオペレーションセンター> (24時間受付)

ドコモの携帯電話からの場合

滞在国の国際電話
アクセス番号 **-81-3-6718-1414*** (無料)

*一般電話などでかけた場合には、日本向け通話料がかかります。
 ※SH-07Bから、ご利用の場合は+81-3-6718-1414につながります。
 (「+」は「0」ボタンを1秒以上押します。)

一般電話などからの場合

<ユニバーサルナンバー>

ユニバーサルナンバー用
国際電話識別番号 **-8005931-8600***

*滞在国内通話料などがかかる場合があります。
 ※主要国の国際電話アクセス番号/ユニバーサルナンバー用国際電話識別番号については、ドコモの「国際サービスホームページ」をご覧ください。

- 紛失・盗難などにあわれたら、速やかに利用中断手続きをお取りください。
- お客さまが購入されたFOMA端末に故障が発生した場合は、ご帰国後にドコモ指定の故障取扱窓口へご持参ください。



マナーもいっしょに携帯しましょう。

◎公共の場所で携帯電話をご利用の際は、周囲の方への心くばりを忘れずに。

販売元 株式会社NTTドコモ

製造元 シャープ株式会社

'10.●(1版)
TINSJA687AFZZ
10* ** ** SM***①

総合お問い合わせ先<ドコモ インフォメーションセンター>

■ドコモの携帯電話からの場合 ■一般電話などからの場合

i (局番なしの) **151** (無料) **☎0120-800-000**
 ※一般電話などからはご利用いただけません。※携帯電話、PHS (他社) からのご利用いただけます。
 ※一部のIP電話からは接続できない場合があります。

受付時間 午前9:00~午後8:00 (年中無休)

●番号をよくご確認のうえ、お間違いないようにおかけください。
 ●各種手続き、故障・アフターサービスについては、上記お問い合わせ先にご連絡いただくか、ドコモホームページ、iモードサイトにてお近くのドコモショップなどにお問い合わせください。
 ドコモホームページ <http://www.nttdocomo.co.jp/>

海外での紛失、盗難、精算などについて

<ドコモ インフォメーションセンター> (24時間受付)

ドコモの携帯電話からの場合

滞在国の国際電話
アクセス番号 **-81-3-6832-6600*** (無料)

*一般電話などでかけた場合には、日本向け通話料がかかります。
 ※SH-07Bから、ご利用の場合は+81-3-6832-6600につながります。
 (「+」は「0」ボタンを1秒以上押します。)

一般電話などからの場合

<ユニバーサルナンバー>

ユニバーサルナンバー用
国際電話識別番号 **-8000120-0151***

*滞在国内通話料などがかかる場合があります。
 ※主要国の国際電話アクセス番号/ユニバーサルナンバー用国際電話識別番号については、ドコモの「国際サービスホームページ」をご覧ください。

- 紛失・盗難などにあわれたら、速やかに利用中断手続きをお取りください。
- お客さまが購入されたFOMA端末に故障が発生した場合は、ご帰国後にドコモ指定の故障取扱窓口へご持参ください。



環境保全のため、不要になった電池は
NTTドコモまたは代理店、リサイクル
協力店などにお持ちください。



大豆油インキを使用しています。

再生紙を使用しています

Quick Manual

CAUTION

Use only the battery packs and adapters specified by NTT DOCOMO for use with the FOMA terminal.

The use of devices other than those specified may cause the FOMA terminal, battery pack or other devices to leak, overheat, explode, catch fire or malfunction.

Do not throw the battery pack into a fire.

The battery pack may leak, overheat, explode or catch fire.

Do not dispose of used battery packs in ordinary garbage.

May cause fires or damage to the environment. Place tape over the terminals to insulate unnecessary battery packs, and take them to a docomo Shop, retailer or institution that handles used batteries in your area.

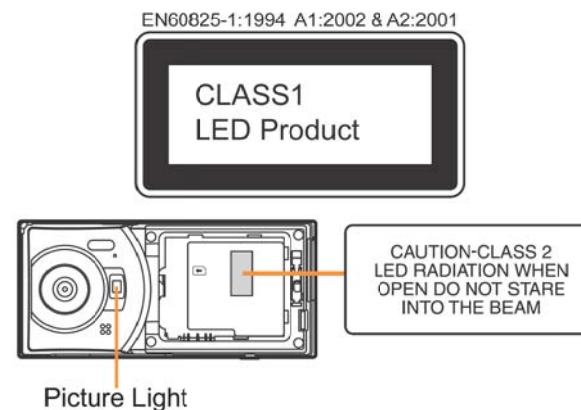
Avoid using the handset in extremely high or low temperatures.

Use the FOMA terminal within the range of a temperature between 5°C and 40°C (for temperatures of 36°C or higher, such as in a room with a bath, limit usage to a short period of time) and a humidity between 45% and 85%.

Charge battery in areas where ambient temperature is between 5°C and 35°C.

Do not point the illuminated light directly at someone's eyes.

Do not use Picture Light near people's faces. Eyesight may be temporarily affected leading to accidents.



CAUTION:

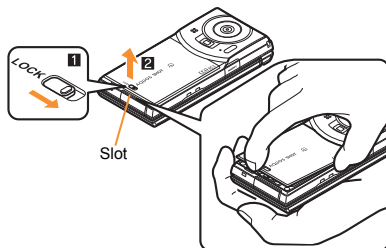
Use of controls, adjustments or performance of procedure other than those specified herein may result in hazardous radiation exposure. As the emission level from Picture Light LED used in this product is harmful to the eyes, do not attempt to disassemble the cabinet. Servicing is limited to qualified servicing station only.

Picture light source LED characteristics

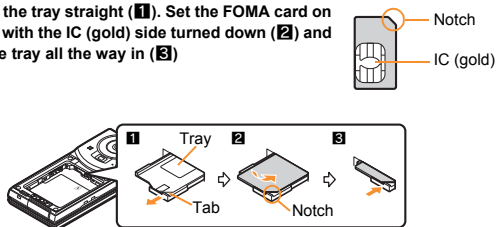
- Continuous illumination
- Wavelength
White: 400-700nm
- Maximum output
White: 1215 μ W (inside FOMA terminal 4.3mW)

Inserting FOMA card and battery pack

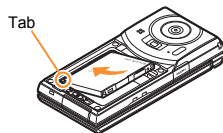
- 1** Slide the back cover lever to unlock (1), hook a nail on the slot and remove the back cover (2)



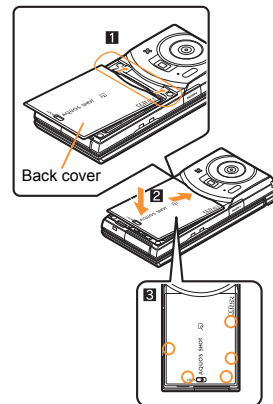
- 2** Pull out the tray straight (1). Set the FOMA card on the tray with the IC (gold) side turned down (2) and push the tray all the way in (3)



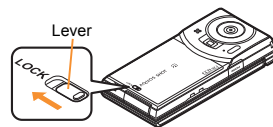
- 3** Turn a recycle mark side up, match tab and attach the battery pack



- 4** Insert the tab of the top of the back cover into the FOMA terminal slot (1), insert it in the direction of the arrow (2) and securely push five tab areas down with both hands (3)



- 5** Slide the back cover lever to lock



- Turn off the power and insert the FOMA card/battery pack while holding the FOMA terminal with your both hands. Note that excessive force may damage the FOMA terminal, FOMA card and battery pack.
- The battery pack is not waterproof.
- Securely close the back cover. If not closed securely, the back cover may come off and the battery pack may fall out due to vibration. May damage the waterproof performance and allow water to seep.

Charging

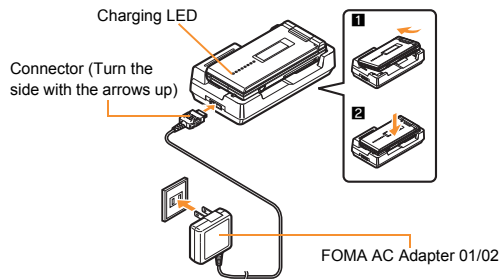
- It is recommended that the accompanying desktop holder be used for charging to prevent water from seeping caused by forgetting to close the external connector terminal cover.
- The AC adapter and desktop holder are not waterproof. Never try to charge the battery pack when the FOMA terminal is wet.

1 Insert the AC adapter into the connector terminal of the desktop holder

2 Insert the AC adapter power plug into an outlet

3 Put the left part of the FOMA terminal on the desktop holder (1) and push it in the direction of the arrow until it clicks (2)

- Charge start sound is heard, charging LED illuminates, and charging starts.

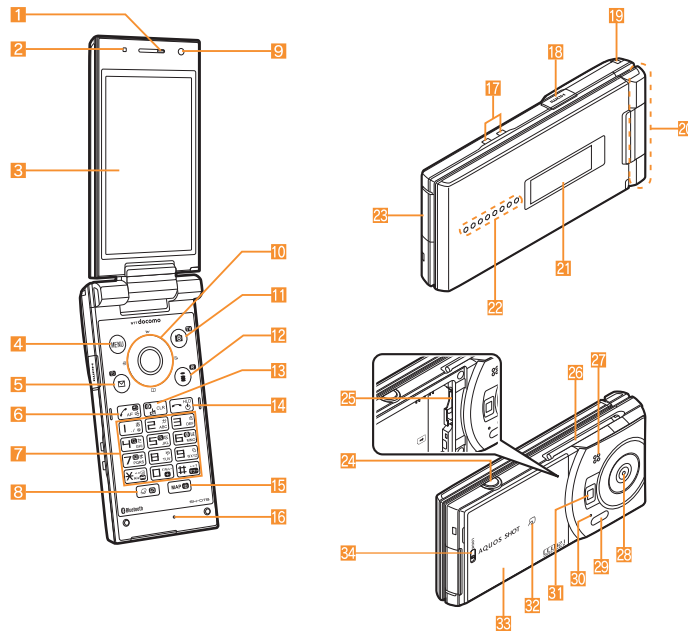


4 Hold the desktop holder and lift the FOMA terminal out when charging is complete

- Charge end sound is heard and charging LED turns off when charging is complete.
- Pull the AC adapter out of the outlet when left unused for a long period of time.
- When charge start sound is not heard or when charging LED does not illuminate, check that the FOMA terminal is placed securely in the desktop holder (except when terminal is turned off, manner mode is set or charge start sound is silent).

- When placing the FOMA terminal in the desktop holder, be careful not to catch a strap.

Part Names and Functions



- 1 Earpiece
- 2 Brightness sensor
- 3 Main display/Touch panel
- 4 **MENU**: MENU key/Operation guidance key
- 5 **MAIL**: Mail/Operation guidance key
- 6 **START**: Start/Hands-free/Eco key
- 7 **1** to **9**, *****, **0** and **#**: Dial/Character entry keys
- 8 **VEIL**: Multi/VeilView key
- 9 Sub camera
- 10 **GUIDE**: Multi-guide key
- 11 **CAMERA**: Camera/TV/Operation guidance key
- 12 **i** (**i**): i-mode/Operation guidance key
- 13 **CH** (**ch**): i-Channel/Clear key
- 14 **POWER**: Power/End key
- 15 **MAP**: MAP/GPS key
- 16 Mouthpiece/Microphone
- 17 Charger terminal
- 18 HDMI terminal
- 19 Strap hole
- 20 FOMA antenna
- 21 Sub display
- 22 Called/Charging LED
- 23 External connector terminal
- 24 **D**: Side key
- 25 microSD Card slot
- 26 1Seg antenna
- 27 Speaker
- 28 Main camera
- 29 Infrared port
- 30 Out-microphone for shooting
- 31 Picture Light
- 32 **MARK** mark
- 33 Back cover
- 34 Back cover lever

● Key illustrations are examples and may look different from actual keys.

Viewing Display/Icon



Icon display area

Main icons

	Battery level [Full] → [High] → [Medium] → [Low] (High → Low)
	Signal status [Strong] → [Medium] → [Weak] → [Outside] (Strong → Weak) ● When [Outside] appears, the handset is outside the service area or in a place with no signal.
	i-mode
	Hands-free
	GPS
	Restriction
	i-mode mail/SMS/Area Mail/Information received
	i-appli
	Alarm/Schedule
	Bluetooth
	Ir communication
	Self mode
	FOMA card error
	3G/GSM
	Full Browser

	Music&Video Channel program reservation
	Manner mode
	Silent/Vibrator
	Public mode (Drive mode)
	Record message
	Keypad dial lock
	microSD Card
	Software update
	1Seg being recorded
	IC card lock
	Music&Video Channel
	Personal data lock

Basic Operations

Turning power on/off

- Turning power on
1 (for 2+ seconds)
- Turning power off
1 (for 2+ seconds)

Changing screen display to English

- 1 **Custom** [本体設定] ▶ [文字表示/入力] ▶ [バイリンガル] ▶ [English]

Making initial setting

The initial setting screen automatically appears when the power is turned on for the first time. Make the initial setting according to instructions on the screen.

- ※ Terminal security code (four to eight digits) is set to [0000] by default but can be changed by user.

Checking your own phone number

1 Custom ①

Character entry

※ Operate in the character entry screen.

■ Switching entry modes

1 [M] ▶ select the entry mode with [C] ▶ [C]

■ Switching upper/lower case

1 Enter a character ▶ [X]

■ Deleting characters

1 Move the cursor to the character and [CLR]

- To delete all characters: At the end of the message, [CLR] (for 1+ seconds)

■ Using phrases

1 [MENU] ▶ [Quote phrase/phone] ▶ [Enter phrase] ▶ select a phrase ▶ [C]

■ Entering pictograms/symbols

1 [P]

- To switch between pictogram and Deco-mail pictogram: [P]
- To switch between single- and double-byte symbols: [MENU]

2 Select a pictogram/symbol ▶ [C]

■ Entering emoticons

1 [MENU] ▶ [Pict/Symbol/Emoticon] ▶ [Emoticon] ▶ select a category ▶ select an emoticon ▶ [C]

■ Character entry example

Ex.) When entering “電話”

1 [M] ▶ [あ] with [C]

2 [4] (four times) ▶ [X] (once) ▶ [0] (three times) ▶ [C] ▶ [0] (once)

3 [P]

4 [C]

Changing ring tone

1 Custom [Setting] ▶ [Sound/Vibration/Manner] ▶ [Ring tone]

2 Select an item ▶ select the field of ring tone type ▶ [C] ▶ select a ring tone type ▶ [C]

3 Select the field of ring tone ▶ [C] ▶ select a ring tone ▶ [C] ▶ [P]

Lock/Security

Changing terminal security code

- 1 Custom [Setting] ▶ [Lock/Security] ▶ [Change security code] ▶ enter the current terminal security code ▶ [C]
- 2 Select the [New terminal security code] field ▶ [C] ▶ enter the new terminal security code ▶ [C]
- 3 Select the [New terminal security code-check] field ▶ [C] ▶ enter the new terminal security code again ▶ [C] ▶ [P]

Changing network security code

- 1 Custom [I-mode/web] ▶ [iMenu/Search] ▶ [お客様サポート] ▶ [各種設定 (確認・変更・利用)] ▶ [ネットワーク暗証番号変更]

Changing i-mode password

- 1 Custom [I-mode/web] ▶ [iMenu/Search] ▶ [English] ▶ [Options] ▶ [Change i-mode Password]

Changing PIN1/PIN2 code

- 1 Custom [Setting] ▶ [Lock/Security] ▶ [UIM] ▶ select the PIN code to lock ▶ [C] ▶ enter the terminal security code ▶ [C]
- 2 Select the Enter PIN code field ▶ enter the current PIN code ▶ [C]
- 3 Select the New PIN code field ▶ [C] ▶ enter the new PIN code ▶ [C]
- 4 Select the New PIN code - check field ▶ [C] ▶ enter the new PIN code again ▶ [C] ▶ [P]

Various lock functions

- All lock
- 1 Custom [Setting] ▶ [Lock/Security] ▶ [Lock settings] ▶ [All lock] ▶ enter the terminal security code ▶ [C]
- Keypad dial lock
- 1 Custom [Setting] ▶ [Lock/Security] ▶ [Keypad dial lock] ▶ enter the terminal security code ▶ [C] ▶ select the setting ▶ [C]
- Appli activation lock
- 1 Custom [Setting] ▶ [Lock/Security] ▶ [Lock settings] ▶ [Appli activation lock] ▶ enter the terminal security code ▶ [C] ▶ select the setting ▶ [C]

Self mode

- 1 **Custom** [Setting] ▶ [Other setting] ▶ [Self mode] ▶ select the setting ▶ ▶ [Yes]

Personal data lock

- 1 **Custom** [Setting] ▶ [Lock/Security] ▶ [Lock settings] ▶ [Personal data lock] ▶ enter the terminal security code ▶ ▶ select the setting ▶

Auto lock

- 1 **Custom** [Setting] ▶ [Lock/Security] ▶ [Lock settings] ▶ [Auto lock] ▶ enter the terminal security code ▶ ▶ [Yes] ▶ select the time setting ▶ ▶ [OK]

IC card lock

- 1 **Stand-by** (for 1+ seconds) ▶ [Yes]

Side key lock

- 1 **Stand-by** (for 1+ seconds) ▶ [Side key lock]

Omakase Lock

Omakase Lock is a service to lock the personal data and IC card functions in case of loss, etc. by only your request to DOCOMO via phone.

- This is a paid service. Refer to "Mobile Phone User's Guide [i-mode] FOMA version" for details on Omakase Lock.

Enable/Disable Omakase Lock

- 0120-524-360 Office hours: 24 hours (open all year round)
- ※ Available from mobile phones and PHSs (including non-DOCOMO phones).
 - ※ Unavailable from part of IP phones.

Incoming call restriction

Rejecting a call with no caller ID

- 1 **Custom** [Setting] ▶ [Lock/Security] ▶ [Call rejection setting] ▶ enter the terminal security code ▶

- 2 Select the reason ▶

- 3 Select the setting field ▶ ▶ [Call Rejection] ▶

Rejecting a call from a caller unset in phonebook

- 1 **Custom** [TEL function] ▶ [Dial/Receive call setting] ▶ [Reject/Accept call] ▶ [Unregistered caller] ▶ enter the terminal security code ▶

- 2 Select the setting ▶

Voice/Videophone Calls

Making a voice/videophone call

- 1 **Stand-by** enter a phone number
- 2 (Phone)/ (V.phone)
- 3 to end the call

Receiving a voice/videophone call

- 1 When a call is received, the ring tone sounds and the called LED flashes
- 2
- 3 to end the call

Making a call with redials/received calls

- 1 **Stand-by** ((Redial))/ (Received calls)
- 2 Select a phone number
- 3 (Phone)/ (V.phone)

Overseas use

Making a call outside your country of stay (including Japan)

- 1 **Stand-by** (for 1+ seconds) ▶ enter the country code, area code (city code) and other party's phone number ▶ (Phone)/ (V.phone)
 - When the area code (city code) begins with "0", omit the "0" when dialing (Include "0" when making a call to some countries or regions such as Italy).

Making a call in your country of stay

- 1 **Stand-by** enter a phone number
- 2 (Phone)/ (V.phone)

Making a call to a WORLD WING subscriber overseas

Even when making a call to the phone in your country of stay, make an international call to Japan if the call recipient is a WORLD WING subscriber overseas.

- 1 **Stand-by** (for 1+ seconds) ▶ enter "81" ▶ enter the other party's mobile phone number excluding the first "0" ▶ (Phone)/ (V.phone)

Mail

Composing and sending i-mode mail

- 1 **Stand-by** [✉] ▶ [Compose new message] ▶ select the [To] field ▶ [Direct input]^{*1} ▶ enter an address ▶ [OK]
- 2 Select the [Sub] field ▶ enter a subject ▶ [Msg] ▶ enter messages ▶ [OK]^{*2}

*1 To select a recipient from a phonebook, select [Search phonebook].

*2 To attach a file, select the attachment field (None) ▶ select the file to attach.

Checking new i-mode mail

- 1 **Stand-by** [✉] ▶ [Check new mail/message]

Replying to i-mode mail

- 1 In the received mail details screen, [MENU] ▶ [Reply/Forward]
- 2 Select the reply method ▶ [OK]
- 3 Compose and send a mail

Forwarding i-mode mail

- 1 In the received mail details screen, [MENU] ▶ [Reply/Forward] ▶ [Forward]
- 2 Enter an address and send a mail

Displaying a mail in Inbox/Outbox/Unsent messages

- 1 **Stand-by** [✉]
- 2 Select the mailbox ▶ [OK]
- 3 Select a mail ▶ [OK]

※ [✉] appears in the stand-by display when a mail is received.

Phonebook

Adding entries to phonebook

- 1 **Custom** [TEL function] ▶ [Phonebook] ▶ [Add to phonebook]
- 2 Enter a name ▶ [OK] ▶ [Phone] ▶ enter a phone number ▶ [OK] ▶ select a phone type icon ▶ [OK] ▶ [Mail] ▶ enter a mail address ▶ [OK] ▶ select a mail address type icon ▶ [OK]

※ Other items can be saved as well.

Camera

Shooting still pictures

- 1 **Custom** [CAMERA/TV/MUSIC] ▶ [Camera] ▶ [Still image shooting] ▶ [OK]

Shooting moving pictures

- 1 **Custom** [CAMERA/TV/MUSIC] ▶ [Camera] ▶ [Movie shooting] ▶ [OK] ▶ [Save]

Displaying still pictures

- 1 **Custom** [Data Box] ▶ [My picture] ▶ select a still picture ▶ [OK]

Playing moving pictures

- 1 **Custom** [Data Box] ▶ [i-motion/Movie] ▶ select a moving picture ▶ [OK]

Watching 1Seg

Performing automatic channel setting

- 1 **Custom** [CAMERA/TV/MUSIC] ▶ [1Seg] ▶ [Channel setting]
- 2 [MENU] ▶ [Create] ▶ [Auto setting] ▶ [Yes]
- 3 Select a prefecture/district ▶ [Yes] ▶ [Yes]

Selecting a channel list

- 1 **Custom** [CAMERA/TV/MUSIC] ▶ [1Seg] ▶ [Channel setting] ▶ select a channel list ▶ [OK]

Watching 1Seg

- 1 **Custom** [CAMERA/TV/MUSIC] ▶ [1Seg] ▶ [Activate 1Seg]
 - To record a video of 1Seg programs: While watching 1Seg, [REC] (for 1+ seconds) ▶ (record) ▶ [OK]
 - To record 1Seg programs as a still picture: While watching 1Seg, [REC]

Watching Videos

- 1 **Custom** [Data box] ▶ [1Seg]
- 2 [Video] folder ▶ select a video ▶ [OK]

Music Playback

Using Music&Video Channel

The Music&Video Channel service is provided in Japanese.

- 1 **Custom** [CAMERA/TV/MUSIC] ▶ [Music&Video ch] ▶ select a program ▶

Using MUSIC Player

- 1 **Custom** [Data Box] ▶ [MUSIC] ▶ select music data ▶

Network Services

Using Voice Mail Service

Voice Mail Service is a paid option (monthly fees apply) that requires subscription.

- 1 **Custom** [TEL function] ▶ [Voice mail service]
- 2 [Activate] ▶ [Yes] ▶ [Yes] ▶ enter the ringing time ▶ ▶ [OK]

Using Call Waiting

Call Waiting is a paid option (monthly fees apply) that requires subscription.

- 1 **Custom** [TEL function] ▶ [Other network service] ▶ [Call waiting]
- 2 [Activate] ▶ [Yes] ▶ [OK]

Using Call Forwarding Service

Call Forwarding Service is a free option (no monthly fees) that requires subscription.

- 1 **Custom** [TEL function] ▶ [Other network service] ▶ [Call forwarding]
- 2 [Activate] ▶ [Yes] ▶ [Yes] ▶ enter a phone number ▶ ▶ ▶ [Yes] ▶ enter the ringing time ▶ ▶ [OK]

Osaifu-Keitai

Hold the mark of the FOMA terminal over the scanning device to use as electronic money or railway tickets, or retrieve ToruCa.

- When the FOMA terminal is stolen or lost, immediately contact your provider of Osaifu-Keitai compatible service for handling methods.

Bluetooth function

- The Bluetooth word mark and logos are owned by Bluetooth SIG, Inc. and any use of such marks by NTT DOCOMO, INC. is under license. Other trademarks and trade names are those of their respective owners.

Registering Bluetooth device

- Set the other party's Bluetooth device to the registration stand-by status.

- 1 **Custom** [Tool] ▶ [Bluetooth] ▶ [List/cnncnt/discnncnt] ▶ [Yes]
- 2 Select a Bluetooth device to register ▶ ▶ [Register Devices]
- 3 Enter the Bluetooth passkey ▶

Connecting to registered Bluetooth devices

- 1 **Custom** [Tool] ▶ [Bluetooth] ▶ [List/cnncnt/discnncnt]
- 2 Select a Bluetooth device to connect to ▶

General Notes

Introduction of options and related devices

- Battery Pack SH23
- FOMA AC Adapter 01 for Global use
- FOMA AC Adapter 01/02
- Desktop Holder SH31

Main specifications

Size			\$\$ (H) × \$\$ (W) × \$\$ (D) mm (\$\$ at thickest point) (when folded)*
Weight			\$\$ g (with battery pack attached)*
Continuous talk time	FOMA/3G		Voice call: \$\$ min*
	GSM		Videophone: \$\$ min*
Continuous stand-by time	FOMA/3G	3G/GSM setting: 3G	When mobile: \$\$ hr*
		3G/GSM setting: AUTO	At rest: \$\$ hr*
	GSM	3G/GSM setting: AUTO	At rest: \$\$ hr*
Charge time	FOMA AC Adapter 01/02		\$\$ min*
	FOMA DC Adapter 01/02		\$\$ min*

* Approximate value

Specific Absorption Rate (SAR) of mobile phone

This model phone SH-07B meets the MIC's* technical regulation for exposure to radio waves.

The technical regulation established permitted levels of radio frequency energy, based on standards that were developed by independent scientific organizations through periodic and thorough evaluation of scientific studies.

The regulation employs a unit of measurement known as the Specific Absorption Rate, or SAR. The SAR limit is 2 watts/kilogram (W/kg)** averaged over ten grams of tissue. The limit includes a substantial safety margin designed to assure the safety of all persons, regardless of age and health. The value of the limit is equal to the international guidelines recommended by ICNIRP***.

All phone models should be confirmed to comply with the regulation, before they are available for sale to the public. The highest SAR value for this model phone is 0.349W/kg. It was taken by the Telecom Engineering Center (TELEC), a Registered Certification Agency on the Radio Law. The test for SAR was conducted in accordance with the MIC testing procedure using standard operating positions with the phone transmitting at its highest permitted power level in all tested frequency bands. While there may be differences between the SAR levels of various phones and at various positions, they all meet the MIC's technical regulation. Although the SAR is determined at the highest certified power level, the actual SAR of the phone during operation can be well below the maximum value.

For further information about SAR, please see the following websites:

World Health Organization (WHO)

<http://www.who.int/peh-emf/en/>

ICNIRP

<http://www.icnirp.de/>

MIC

<http://www.tele.soumu.go.jp/e/sys/ele/index.htm>

TELEC

http://www.telec.or.jp/ENG/Index_e.htm

NTT DOCOMO

<http://www.nttdocomo.co.jp/english/product/sar/>

SHARP Corporation

<http://www.sharp.co.jp/products/menu/phone/cellular/sar/index.html>

* Ministry of Internal Affairs and Communications

** The technical regulation is provided in Article 14-2 of the Ministry Ordinance Regulating Radio Equipment.

*** International Commission on Non-Ionizing Radiation Protection

European RF Exposure Information

Your mobile device is a radio transmitter and receiver. It is designed not to exceed the limits for exposure to radio waves recommended by international guidelines.

These guidelines were developed by the independent scientific organization ICNIRP and include safety margins designed to assure the protection of all persons, regardless of age and health.

The guidelines use a unit of measurement known as the Specific Absorption Rate, or SAR. The SAR limit for mobile devices is 2 W/kg and the highest SAR value for this device when tested at the ear was 1.29W/kg*.

As SAR is measured utilizing the devices highest transmitting power the actual SAR of this device while operating is typically below that indicated above. This is due to automatic changes to the power level of the device to ensure it only uses the minimum level required to reach the network.

The World Health Organization has stated that present scientific information does not indicate the need for any special precautions for the use of mobile devices.

They note that if you want to reduce your exposure then you can do so by limiting the length of calls or using a hands-free device to keep the mobile phone away from the head.

* The tests are carried out in accordance with international guidelines for testing.

Declaration of Conformity

CE 0168

Hereby, Sharp Telecommunications of Europe Ltd, declares that this SH-07B is in compliance with the essential requirements and other relevant provisions of Directive 1999/5/EC.

A copy of the original declaration of conformity can be found at the following Internet address:

<http://www.sharp.co.jp/k-tai/>

FCC Notice

- This device complies with part 15 of the FCC Rules. Operation is subject to the following two conditions:
(1) This device may not cause harmful interference, and (2) this device must accept any interference received, including interference that may cause undesired operation.
- Changes or modifications not expressly approved by the manufacturer responsible for compliance could void the user's authority to operate the equipment.

Information to User

This equipment has been tested and found to comply with the limits of a Class B digital device, pursuant to Part 15 of the FCC Rules. These limits are designed to provide reasonable protection against harmful interference in a residential installation. This equipment generates, uses and can radiate radio frequency energy and, if not installed and used in accordance with the instructions, may cause harmful interference to radio communications.

However, there is no guarantee that interference will not occur in a particular installation; if this equipment does cause harmful interference to radio or television reception, which can be determined by turning the equipment off and on, the user is encouraged to try to correct the interference by one or more of the following measures:

1. Reorient/relocate the receiving antenna.
2. Increase the separation between the equipment and receiver.
3. Connect the equipment into an outlet on a circuit different from that to which the receiver is connected.
4. Consult the dealer or an experienced radio/TV technician for help.

FCC RF Exposure Information

Your handset is a radio transmitter and receiver.

It is designed and manufactured not to exceed the emission limits for exposure to radio frequency (RF) energy set by the Federal Communications Commission of the U.S. Government.

The guidelines are based on standards that were developed by independent scientific organisations through periodic and thorough evaluation of scientific studies. The standards include a substantial safety margin designed to assure the safety of all persons, regardless of age and health.

The exposure standard for wireless handsets employs a unit of measurement known as the Specific Absorption Rate, or SAR. The SAR limit set by the FCC is 1.6 W/kg.

The tests are performed in positions and locations (e.g., at the ear and worn on the body) as required by the FCC for each model. The highest SAR value for this model handset when tested for use at the ear is 0.622W/kg and when worn on the body, as described in this user guide, is 0.593W/kg.

Body-worn Operation; This device was tested for typical body-worn operations with the back of the handset kept 1.5 cm from the body. To maintain compliance with FCC RF exposure requirements, use accessories that maintain a 1.5 cm separation distance between the user's body and the back of the handset. The use of beltclips, holsters and similar accessories should not contain metallic components in its assembly.

The use of accessories that do not satisfy these requirements may not comply with FCC RF exposure requirements, and should be avoided.


The FCC has granted an Equipment Authorization for this model handset with all reported SAR levels evaluated as in compliance with the FCC RF emission guidelines. SAR information on this model handset is on file with the FCC and can be found under the Display Grant section of <http://www.fcc.gov/oet/ea/fccid/> after searching on FCC ID APYHRO00117

Additional information on Specific Absorption Rates (SAR) can be found on the Cellular Telecommunications & Internet Association (CTIA) Website at <http://www.ctia.org/>.

Inquiries

General inquiries <docomo Information Center>

(Business hours: 9:00 a.m. to 9:00 p.m.)


 **0120-005-250 (toll free)**

- ※ Service available in: English, Portuguese, Chinese, Spanish, Korean.
- ※ Available from mobile phones and PHSs (including non-DOCOMO phones).
- ※ Unavailable from part of IP phones.

(Business hours: 9:00 a.m. to 8:00 p.m.)

From DOCOMO mobile phones

(In Japanese only)

 **(No prefix) 151 (toll free)**

- ※ Unavailable from land-line phones, etc.

From land-line phones

(In Japanese only)

 **0120-800-000 (toll free)**

- ※ Available from mobile phones and PHSs (including non-DOCOMO phones).
- ※ Unavailable from part of IP phones.

- Please confirm the phone number before you dial.

Repairs

(Business hours: 24 hours (open all year round))

From DOCOMO mobile phones

(In Japanese only)

F (No prefix) 113 (toll free)

※ Unavailable from land-line phones, etc.

From land-line phones

(In Japanese only)

☎ 0120-800-000 (toll free)

※ Available from mobile phones and PHSs (including non-DOCOMO phones).

※ Unavailable from part of IP phones.

● Please confirm the phone number before you dial.

● For Applications or Repairs and After-Sales Service, please contact the above-mentioned information center or the docomo Shop, etc. near you on the NTT DOCOMO website or the i-mode site.

NTT DOCOMO website: <http://www.nttdocomo.co.jp/english/>

i-mode site: [iMenu](#) ▶ [お客様サポート](#) (user support) ▶ [ドコモショップ](#) (docomo Shop) (In Japanese only)

Loss or theft FOMA terminal or payment of cumulative cost overseas <docomo Information Center>

(available 24 hours a day)

From DOCOMO mobile phones

International call access code for the country you stay -81-3-6832-6600* (toll free)

* You are charged a call fee to Japan when calling from a land-line phone, etc.

※ If you use SH-07B, you should dial the number +81-3-6832-6600 (to enter "+", press the "0" key for 1+ seconds).

From land-line phones

<Universal number>

International prefix number for the universal number -8000120-0151*

* You might be charged a domestic call fee according to the call rate for the country you stay.

※ Refer to DOCOMO International Services website for international call access codes for major countries and international prefix numbers for the universal number.

Failures encountered overseas <Network Support and Operation Center>

(available 24 hours a day)

From DOCOMO mobile phones

International call access code for the country you stay -81-3-6718-1414* (toll free)

* You are charged a call fee to Japan when calling from a land-line phone, etc.

※ If you use SH-07B, you should dial the number +81-3-6718-1414 (to enter "+", press the "0" key for 1+ seconds).

From land-line phones

<Universal number>

International prefix number for the universal number -8005931-8600*

* You might be charged a domestic call fee according to the call rate for the country you stay.

※ Refer to DOCOMO International Services website for international call access codes for major countries and international prefix numbers for the universal number.

● If you lose your FOMA terminal or have it stolen, immediately take the steps necessary for suspending the use of the FOMA terminal.

● If the FOMA terminal you purchased is damaged, bring your FOMA terminal to a repair counter specified by DOCOMO after returning to Japan.