

General Inquiries <docomo Information Center>

(Business hours: 9:00 a.m. to 8:00 p.m.)

 **0120-005-250** (toll free)

※ Service available in English, Portuguese, Chinese, Spanish, Korean.
※ Unavailable from part of IP phones.

(Business hours: 9:00 a.m. to 8:00 p.m. (open all year round))

■ From DOCOMO mobile phones ■ From land-line phones
(In Japanese only) (In Japanese only)

 (No prefix) **151** (toll free)  **0120-800-000** (toll free)

※ Unavailable from land-line phones, etc. ※ Unavailable from part of IP phones.

● Please confirm the phone number before you dial.

● For Applications or Repairs and After-Sales Service, please contact the above-mentioned information center or the docomo Shop etc. near you on the NTT DOCOMO website.

NTT DOCOMO website <http://www.nttdocomo.co.jp/english/>

Repairs

(Business hours: 24 hours (open all year round))

■ From DOCOMO mobile phones ■ From land-line phones
(In Japanese only) (In Japanese only)

 (No prefix) **113** (toll free)  **0120-800-000** (toll free)

※ Unavailable from land-line phones, etc. ※ Unavailable from part of IP phones.

NTT
docomo

Loss or theft of FOMA terminal or payment of cumulative cost overseas <docomo Information Center>

(available 24 hours a day)

From DOCOMO mobile phones

International call access code
for the country you stay **-81-3-6832-6600*** (toll free)

* You are charged a call fee to Japan when calling from a land-line phone, etc.
※ If you use SH-13C, you should dial the number +81-3-6832-6600
(to enter "+", touch "0" for a while).

From land-line phones

<Universal number>

Universal number
international prefix **-8000120-0151***

* You might be charged a domestic call fee according to the call rate for the country you stay.

※ For international call access codes for major countries and universal number international prefix, refer to DOCOMO International Services website.

● If you lose your FOMA terminal or have it stolen, immediately take the steps necessary for suspending the use of the FOMA terminal.

● If the FOMA terminal you purchased is damaged, bring your FOMA terminal to a repair counter specified by DOCOMO after returning to Japan.

 **Don't forget your mobile phone... or your manners!**

When using your mobile phone in a public place, don't forget to show common courtesy and consideration for others around you.

Failures encountered overseas <Network Support and Operation Center>

(available 24 hours a day)

From DOCOMO mobile phones

International call access code
for the country you stay **-81-3-6718-1414*** (toll free)

* You are charged a call fee to Japan when calling from a land-line phone, etc.
※ If you use SH-13C, you should dial the number +81-3-6718-1414
(to enter "+", touch "0" for a while).

From land-line phones

<Universal number>


Universal number
international prefix **-8005931-8600***

* You might be charged a domestic call fee according to the call rate for the country you stay.

※ For international call access codes for major countries and universal number international prefix, refer to DOCOMO International Services website.

Sales: NTT DOCOMO, INC.
Manufacturer: SHARP Corporation

AQUOS PHONE SH-02D

 To prevent damage to the environment,
bring used battery packs to a docomo
service counter, a docomo agent or a
recycle center.

LI-Ion00

CAUTION

Use only the battery packs and adapters (including charger micro USB adapter) specified by NTT DOCOMO for use with the FOMA terminal.

May cause fires, burns, bodily injury or electric shock.

Do not throw the battery pack into a fire.

The battery pack may catch fire, explode, overheat or leak.

Do not dispose of used battery packs in ordinary garbage.

May cause fires or damage to the environment. Place tape over the terminals to insulate unnecessary battery packs, and take them to a docomo Shop, retailer or institution that handles used batteries in your area.

Avoid using the handset in extremely high or low temperatures.

Use the FOMA terminal within the range of a temperature between 5°C and 40°C (for temperatures of 36°C or higher, such as in a room with a bath, limit usage to a short period of time) and a humidity between 45% and 85%.

Charge battery in areas where ambient temperature is between 5°C and 35°C.



Don't

Do not allow water or other liquids, metal, flammable material or other foreign objects to enter the miniUIM or microSD Card slot on the FOMA terminal.

May cause fires, burns, bodily injury or electric shock.



Don't

Do not shine the light at anyone driving a car or other vehicles.

May prevent a driver from driving safely and cause a traffic accident.



Instruction

Turn off the FOMA terminal in areas where the use of mobile phones is prohibited, such as in aircraft or hospitals.

May interfere with the operation of electronic devices and electronic medical equipment. Follow the instructions given by the respective medical facilities regarding the use of mobile phones on their premises. Actions such as using a mobile phone aboard aircraft are prohibited and punishable by law. However, follow the instructions on use of the mobile phone given by the airline if the mobile phone can be used aboard aircraft by setting the mobile phone such as setting it not to emit radio wave.



Instruction

Keep the FOMA terminal away from the ears during a call in which hands-free is set or while the ring tone is ringing. When you attach the earphone/microphone, etc. to the FOMA terminal to play games or music, do not make the volume too loud.

Excessive high volume may damage your hearing. Also, it may prevent you from hearing the ambient sounds and cause an accident.

Earphone Signal Level

The maximum output voltage for the music player function, measured in accordance with EN 50332-2, is 7.0 mV.



Instruction

If you have a weak heart, take extra precautions when setting functions such as the vibrator and ring tone volume for incoming calls.

May have harmful effects on your heart.



Instruction

If you are using electronic medical equipment, contact the respective manufacturer or vendor to check whether the operation of the equipment is affected by signals.

May interfere with the operation of electronic medical equipment, etc.

Charging with AC adapter/DC adapter

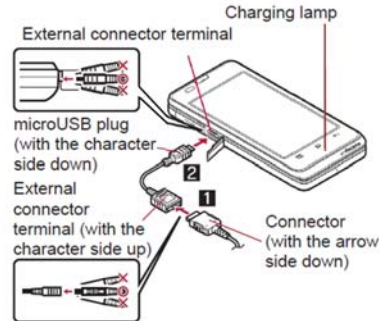
[Read the user's guides of FOMA AC Adapter 01/02 (sold separately) and FOMA DC Adapter 01/02 (sold separately)]

1 Insert the AC or DC adapter connector horizontally into the external connector terminal of the FOMA charger micro USB adapter SH01/FOMA charging micro USB adapter T01 **(1)**

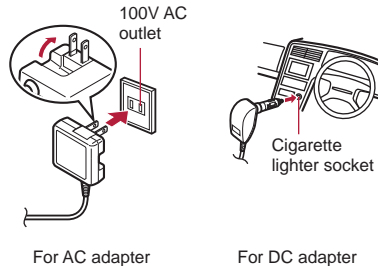
- Check the direction (front or rear) of the connector, keep it parallel with the FOMA charger micro USB adapter SH01/FOMA charging micro USB adapter T01 and securely push all the way in until it clicks.

2 Open the external connector terminal cover of the FOMA terminal and insert the microUSB plug of the FOMA charger micro USB adapter SH01/FOMA charging micro USB adapter T01 horizontally into the external connector terminal **(2)**

- Check the direction (front or rear) of the microUSB plug and insert it horizontally.
- The following illustration is an example to insert the FOMA charger micro USB adapter SH01.

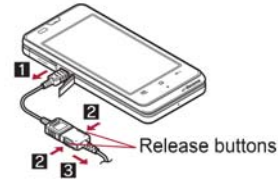


3 When inserting the AC adapter power plug into an outlet or inserting the DC adapter power plug into a car cigarette lighter socket, charging lamp illuminates and charging starts



4 When charging lamp turns off, charging is complete

- When charging is complete, remove the microUSB plug horizontally from the FOMA terminal (1).
- When removing the connector from the FOMA charger micro USB adapter SH01/ FOMA charging micro USB adapter T01, always hold the release buttons on both sides (2) and unplug it horizontally (3).



- Do not forcibly insert or remove. May cause damage to the external connector terminal, the microUSB plug and the connector.
- Pull the adapter out of the outlet or cigarette lighter socket if it will not be used for a long time.
- Do not forcibly pull the external connector terminal cover. May damage the cover.
- Do not place objects near the FOMA terminal when charging. May damage the FOMA terminal.

When using a DC adapter


- The DC adapter should only be used in negative grounded vehicles (12 and 24V DC).
- Do not use with the car engine shut off. May drain the car battery.
- The DC adapter fuse (2A) is a consumable. For replacement, purchase a new fuse at a local automobile supply shop.
- Refer to the user's guide of FOMA DC Adapter 01/02 for details.

Turning power ON/OFF


■ Turning power ON


1  (for at least 2 seconds)

■ Turning power OFF

1  (for at least 1 second) ▶ [Power off] ▶ [OK]

■ Sleep mode

The screen is off and the sleep mode is activated when  is pressed or the FOMA terminal is not in use for a set length of time.

Press  in the sleep mode to deactivate the sleep mode.



■ Touch panel lock

When the power is turned on or the sleep mode is deactivated, the touch panel is locked.

Keep touching [, , ] and slide it up into [, , ] to unlock.



Key operation in touch panel unlock screen

- To set/disable manner mode:  (for at least 1 second)
- To turn off power:  (for at least 2 seconds)
- If there is an unchecked missed call etc., an icon is displayed on the unlock screen. If you touch the icon before unlocking the touch panel, the corresponding screen is displayed.

Basic operation

Operation of touch panel

You can operate by touching the touch panel (display) directly with your finger.

- Operations differ depending on the function and screen in use.

Cautions when using the touch panel

- The touch panel is designed to be lightly touched with your finger. Do not forcefully press with your finger, press with a pointed object (fingernail, ballpoint pen, pin, etc.), etc.
- In the following cases, the touch panel may not work even if you touch it. May cause a malfunction.
 - Operation with a gloved finger
 - Operation with a fingernail
 - Operation with foreign objects placed on the operation pad
 - Operation on the touch panel on which a protective sheet or a sticker is put
 - Operation while the touch panel is wet
 - Operation with fingers wet with sweat or water

■ Touch

Touch a key or an item displayed on the screen to select or set it.

- 1 Put your finger on the touch panel and put it off



■ Touch for a while

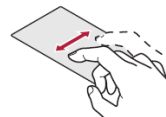
When you touch the screen for a while, a menu may appear depending on the function and screen in use.

- 1 Keep your finger on the touch panel

■ Slide

Slide up/down while a menu is displayed etc. to scroll the screen. When you touch a menu or item by mistake, slide away from the menu or item to cancel the selection.

- 1 Keep your finger on the touch panel and slide it



■ Quickly slide

Quickly slide to the left/right in the home screen etc. to switch pages.

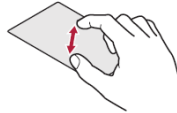
- 1 Quickly slide your finger and put it off



■ **Put a distance between two fingers
apart/closer**

Put a distance between two fingers apart/closer
while displaying an image etc. to zoom in/out.

- 1 Put two fingers on the touch panel
and slide them with putting a
distance between two fingers apart/
closer**



Call/Network Services

Phone

Making a call

- 1** In the home screen, [⊖] ▶ [Phone]
- 2** Enter a phone number
 - Always dial the area code, even when the number is of the same area.
 - You can set to notify/not to notify the other party of your phone number for each call by adding "186"/"184" to the head of the phone number.
- 3** [Call]
- 4** [End call] to end the call

Emergency call

Emergency calls	Phone number
Emergency call to police	110
Emergency call to fire station/medical assistance	119
Emergency call at sea	118

- This FOMA terminal supports "Location notification of emergency call".
When dialing an emergency number such as 110, 119, and 118, the information of your location (location information) is automatically notified to the agency that received the emergency call (e.g. the police station). Depending on your location and the reception status of the signal, the agency that received the emergency call may not be able to confirm the exact location.
If you are not sending your caller ID by calling with "184" added or other means, your location information and phone number are not notified. However, if the agency that received the emergency call considers your location information and phone number necessary for important purposes, such as life saving, the agency can retrieve them regardless of your settings.
In addition, the area/timing to introduce "Location notification of emergency call" depends on the state of preparation in each agency that receives emergency calls.
- In Japan, you cannot call to the emergency number (110, 119 or 118) from the PIN code entry screen and PUK (PIN Unlock Key) entry screen, with a miniUIIM locked.

- When calling 110, 119, and 118 from your FOMA terminal, the police or fire stations may return your call for verification purposes. State that you are calling from a mobile phone, and give your phone number and exact location. Remain stationary to ensure that you are not disconnected while making an emergency call, and keep handset turned on to receive calls for approximately 10 minutes afterwards.
- Depending on the region, calls to the police or fire station may not be connected.

International call (WORLD CALL)

WORLD CALL is an international calling service available from DOCOMO FOMA terminal in Japan.

WORLD CALL is registered when FOMA services are registered (excluding users who did not apply for WORLD CALL).




- You can call to about 240 countries and regions worldwide. Calling to a fixed-phone and mobile phone overseas is available.
- For information on available countries and telecommunications carriers, refer to "Mobile Phone User's Guide [International Services]" or the DOCOMO International Services website.
- WORLD CALL charges are billed with the monthly FOMA service charges.
- Commission and monthly usage fees are free.
- Contact "General Inquiries" on the back of this manual for details on WORLD CALL.
- To make an international call through a company other than DOCOMO, contact the representative companies for instructions.

- The caller ID may not be notified or displayed correctly depending on some overseas telecommunications carriers. In this case, making a call with incoming call history is not available.

[Calling Method]

- When calling to a fixed-line phone: 010 ▶ country code ▶ area code (city code) ▶ the other party's phone number ▶ [Call]
- When calling to a mobile phone: 010 ▶ country code ▶ the other party's phone number ▶ [Call]
- For the other parties' phone numbers and area codes (city codes) that begin with "0", omit the "0" when entering (except some countries or regions such as Italy).
- Alternatively, enter "009130-010" as usual or "+" instead of "010".

Receiving a call

- 1 When a call is received, the ring tone sounds and the incoming lamp flashes**
 - If you press  during an incoming call, you can stop incoming ring tone or vibrator.
- 2 Keep touching  and slide to the right**
 - When call is received while the backlight is illuminated (except while the touch panel unlock screen is displayed), touch [Answer].
 - To place a call on hold: Keep touching  and slide to the left
- 3 [End call] to end the call**

Wireless & networks

Set communication such as Wi-Fi, Bluetooth function and Wi-Fi tethering.

1 In the home screen, [⊖] ▶
[Settings] ▶ [Wireless & networks]

2 Select an item

- **Offline mode:** Restrict the use of all functions using communication such as call/mail function.
- **Wi-Fi:** Enable Wi-Fi function.
- **Wi-Fi settings**
- **Home network settings**
- **Bluetooth:** Activate Bluetooth function.
- **Bluetooth settings**
- **Portable hotspot**
- **VPN settings:** Set and manage VPN.
- **Mobile networks**

[Offline mode]

- When the SIM card lock setting is enabled, you cannot call to the emergency number (110, 119 or 118). When the SIM card lock setting is disabled, you can call to the emergency number (110, 119 or 118) in Offline mode. If you call to the emergency number, Offline mode is disabled and the call is made.

[VPN settings]

- VPN (Virtual Private Network) is a connection method to prepare for and connect safely to a virtual dedicated line on the network at home or in the office from outside the home, office, etc.
 - PPTP is not available when ISP is set to sp-mode.

Wi-Fi tethering

Tethering function that connects Wi-Fi compatible devices to the Internet via networks of this FOMA terminal by using the FOMA terminal as a Wi-Fi access point is available.

- You can connect to up to five Wi-Fi compatible devices simultaneously.
- This function is available inside the FOMA service area. However, this function may be interrupted depending on the conditions on communications or on network congestion.
- This function is not available when miniUI is not inserted or in cases in which the FOMA service is canceled or stopped.

1 In the home screen, [⊖] ▶

[Settings] ▶ [Wireless & networks] ▶ [Portable hotspot]

2 Select an item

- **Portable Wi-Fi hotspot:** Enable the Wi-Fi tethering.
 - Check the details of the precautions before use.
- **Portable Wi-Fi hotspot settings:** Set the Wi-Fi tethering settings such as network SSID and security.
 - [Configure Wi-Fi hotspot] ▶ set each item ▶ [Save] to set Wi-Fi hotspot. Set security setting if necessary. The security setting supports WPA2 PSK.
- **Help:** Display Help information.

Call settings

Set call such as voice mail, reject calls, etc.

1 In the home screen, [⊖] ▶

[Settings] ▶ [Call settings]

2 Select an item

- **Any key answer settings:** Set an action when you press [☎] on receiving a call.
- **Auto answer:** Set to answer a call automatically when an earphone is connected.
- **Calling display setting:** Set the display in the screen during a call.
- **Call/Ans Memo:** Play or set Call/Answer Memo. If you set Answering Memo, the FOMA terminal answers a call and records the caller's message when you cannot answer.
- **Int'l call settings:** Check country codes.
- **Call blocking:** Set Call blocking.
 - [Specified numbers] ▶ [≡] ▶ [Edit] to save the specified phone number.
- **NWService:** For details
- **Accounts:** Set an account of Internet call.
- **Use Internet calling:** Set whether to use Internet call.

[Any key answer settings]

- Following items can be set.
 - **Answer:** Press [☎] on receiving a call to answer it.
 - **Quick silent:** Press [☎] on receiving a call to temporarily stop the ring tone or vibration.
 - **OFF:** Operation is not available by pressing [☎] on receiving a call.

Display settings

Set screen display etc.

1 In the home screen, [⊖] ▶
[Settings] ▶ [Display settings]

2 Select an item

- **Brightness**: Set the brightness of backlight.
- **Auto-rotate screen**: Set whether to switch the screen to horizontal/vertical display when rotating the FOMA terminal 90° to the left/right.
- **Animation**: Express screen switch with animation.
- **Screen timeout**: Set the light duration of backlight.
- **VeilView**: Prevent others from seeing display.
- **Text font**: Set the text font.
- **Wallpaper**: Set an image of home screen.

[Brightness], [Screen timeout]

- Note that increasing the brightness level or the light duration shortens the continuous stand-by time.

[VeilView]

- The effect of preventing others from seeing differs depending on the selected patterns.
- The intensity is more effective to prevent others from seeing the display in order of [Dark], [Medium], and [Light].
- VeilView is disabled if the power is turned off.

[Text font]

- Font may not appear correctly when activating an application downloaded from Android Market etc. depending on the selected font.

USB connection

Change the setting in connecting the FOMA terminal to PC using the microUSB cable for PC (sample).

1 In the home screen, [⊖] ▶
[Settings] ▶ [USB connection]

2 Select an item

- **USB battery charge**: Charge the FOMA terminal while it is connected to a PC via the microUSB cable for PC.
- **USB connection mode**: Change the mode set when connecting the FOMA terminal to a PC.
 - Connect the FOMA terminal to a PC via the microUSB cable for PC in advance.

[USB battery charge]

- USB battery charge setting is enabled when a USB is connected next time or the USB connection mode is changed.

[USB connection mode]

- The following modes can be set.
 - **Card reader mode**: Mode for using microSD Card inserted to the FOMA terminal as an external memory for a PC.
 - **Fast transfer mode**: Mode for upgrading OS version.
 - **MTP mode**: Mode for transferring music/video/still picture data to microSD Card using Windows Media® Player 11/12.
- While transferring data, Offline mode may be enabled.

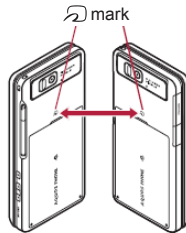
iC communication

Using iC communication

You can send and receive data with other FOMA terminals equipped with iC communication function.

- Make initial setting of Osaifu-Keitai in advance.
- In the following cases, you cannot perform iC communication.
 - During Offline mode
 - During Osaifu-Keitai lock
- In the following cases, data may not be sent via iC communication.
 - During a call
 - During charging
 - During earphone connection
 - During USB connection
- For details on other data that can be sent and received or various locked operations, refer to “Infrared communication”.

■ When using iC communication



- Use while placing the iC mark of receiver's FOMA terminal on that of sender's FOMA terminal as shown.

- Do not move the FOMA terminal until sending and receiving of data is completed.
- There may be some cases in which data are poorly sent and received or the screen is off by positioning FOMA terminal near depending on the other party's terminal. In that case, put a distance between the iC marks apart/closer or slide them up/down or to the left/right.

Sending and receiving by iC

To enter authentication code is required for sending and receiving all data items. The authentication code is a password exclusively for iC communication.

Before starting data communication, the sender and receiver must enter the same user-specified four-digit code. In addition, to enter Lock No. is required for sending and receiving all data items.

- Insert a microSD Card in advance. However, sending and receiving just single data may not require the microSD Card.

■ Sending data

Example: Phonebook

- 1 In the home screen, [Ⓜ] ▶ [Address Book]
- 2 Touch a phonebook for a while ▶ [Send iC] ▶ [Yes]
- 3 Place the iC mark on that of the other party's FOMA terminal
- 4 [OK]

■ Receiving data

- 1 Place the iC mark on that of the other party's FOMA terminal

- 2 [Accept]**
3 Touch the status bar ▶ select received data

Bluetooth function

You can connect the FOMA terminal to Bluetooth devices wirelessly.

- Wireless communications with all the Bluetooth devices are not completely guaranteed.
- Bluetooth function is not available in Offline mode.

Supported version and supported profiles

■ Supported version

Bluetooth Specification Ver.3.0+EDR*1

■ Supported profiles*2 (Supported services)

HSP: Headset Profile*3

HFP: Hands Free Profile*4

A2DP: Advanced Audio Distribution Profile*5

AVRCP: Audio/Video Remote Control Profile*5

HID: Human Interface Device Profile*6

OPP: Object Push Profile*7

SPP: Serial Port Profile*8

PBAP: Phone Book Access Profile*9

- *1 The FOMA terminal and all Bluetooth function-installed devices have ensured that they conform to the Bluetooth specification according to the rules that the Bluetooth SIG defines, and are all authenticated. However, operating methods might differ or data might not be exchanged even when they are connected wirelessly, depending on the features or specifications of connecting devices.

- *2 Standardizes the communication procedures of Bluetooth device per feature of a device.
- *3 Connect commercially available Bluetooth compatible Headset to the FOMA terminal to talk wirelessly.
- *4 Connect a commercially available Bluetooth compatible hands-free device such as a car navigation system to the FOMA terminal to talk during hands-free operation using the car navigation system.
- *5 Connect Wireless Earphone Set 02 (sold separately) or commercially available Bluetooth compatible audio device to the FOMA terminal to play music wirelessly. Also, remote control operation may be available from Bluetooth devices. However, compatible devices are limited depending on the data type.
- *6 Connect commercially available Bluetooth compatible keyboard to Bluetooth devices to enable you to enter characters with a keyboard.
- *7 Connect a Bluetooth device to the FOMA terminal with the File transfer service to send and receive data between them.
- *8 Set the virtual connection with a serial cable and interconnect between devices.
- *9 Transfer phonebook data in the FOMA terminal to a Bluetooth device. Data is not displayed correctly on the other party's device depending on the contents of the transferred phonebook data.

- Refer to the manual for the Bluetooth device as well.
- When connecting the Wireless Earphone Set 02, connect it from the FOMA terminal.

Precautions for handling the Bluetooth device

Note the following when using the Bluetooth device.

- Note the following to make good connection.
 - Keep the distance between the FOMA terminal and another Bluetooth device within approximately 10 m with no obstructions in sight. The distance that can make connection may be shorter when there are obstructions between them or depending on the conditions of the surroundings (such as walls or furniture) and the structure of a building. Especially when there is a wall or floor of reinforced concrete between them, they may be unable to connect with each other. Note the above mentioned distance is not guaranteed.
 - Move the FOMA terminal and another Bluetooth device as far away as possible from home electric appliances, AV devices, OA devices, etc. before connection. The Bluetooth device is liable to be adversely affected by a microwave oven, so move it as far away as possible from the microwave oven while using it. Otherwise, normal connection cannot be performed when electric devices are powered on or Bluetooth devices may cause noises or reception failure on a TV or radio set (TV images may degrade for specific channels of UHF or satellite broadcasting).

- Move the Bluetooth device to a place that connection is possible when there is a broadcast station or radio near the Bluetooth device, and the FOMA terminal cannot be connected to the device. Strong radio waves may prevent connection between Bluetooth devices.
- Wireless connection is available with Bluetooth device put in a bag or pocket. However, lowering of communication speed or noise may result when you are in between the Bluetooth device and the FOMA terminal.
- Electromagnetic signals from the Bluetooth device may affect the operation of electronic medical equipment. As some cases may result in accident, turn off the FOMA terminal and other Bluetooth devices in the following place.
 - On trains ■ On airplanes ■ In hospitals
 - Nearby automatic doors or fire alarms
 - In places such as gas stations where flammable gas is generated

The radio interference with Wi-Fi compatible devices

- The Bluetooth devices use the same frequency band (2.4 GHz) as wireless LANs (IEEE 802.11b/g/n). Therefore, using the Bluetooth device near a wireless LAN device may cause the radio interference, lowering of communication speed, noise or connection fail. In this case, turn off the wireless LAN device or keep the FOMA terminal and the Bluetooth device at least approximately 10 m away from the wireless LAN.

Bluetooth settings

- Enable Bluetooth function in advance
- To register/connect a Bluetooth device, the Bluetooth passkey may need to be entered. Before starting the registration, decide the 1- to 16-digit number. Enter the same number on the FOMA terminal and the other party's Bluetooth device.

1 In the home screen, [⊖] ▶
[Settings] ▶ [Wireless & networks] ▶ [Bluetooth settings]

2 Select an item

- **Bluetooth**: Enable Bluetooth function.
- **Device name**: Change the FOMA terminal's name.
- **Discoverable**: Set whether to receive a search request from other Bluetooth devices.
- **Detailed Bluetooth Settings**: Set Bluetooth function.
- **Scan for devices**: Search for the Bluetooth devices around the FOMA terminal and register them in it.
 - Set the other party's Bluetooth device to the registration stand-by status in advance.

- You can connect more than two devices simultaneously. However, when hands-free (headset) and audio are connected with each other, you cannot hear the audio sound during a hands-free call.
- If you fail to connect, connection may become available after re-registration of Bluetooth devices.

[Bluetooth]

- When the Bluetooth function is enabled, the FOMA terminal is set to receive a registration request/connection request from other Bluetooth devices. Enable Discoverable in advance to allow the FOMA terminal to be searched for by other Bluetooth devices.
- While in connection stand-by, even if a connection request from a Bluetooth device is received, connection may not be made depending on the signal strength etc.

[Discoverable]

- Setting is disabled automatically when a certain period of time passed after enabling.

[Scan for devices]

- For details on the operations of the other party's Bluetooth device, refer to the manuals of the Bluetooth device to be used.

■ When receiving registration request from Bluetooth device or connection request from unregistered Bluetooth device

1 Registration request/Connection request from Bluetooth device

2 [Pair]

- Entering the Bluetooth passkey may be necessary depending on the other party's Bluetooth device.

Sending and receiving by Bluetooth

- Insert a microSD Card in advance. However, sending and receiving just single data may not require the microSD Card.

■ Sending data

Example: Still picture

- 1 In the home screen, [⊖] ▶
[Contents Manager]
- 2 Touch a still picture for a while ▶
[Share] ▶ [Bluetooth]
 - Set the receiving Bluetooth device to receive data.
- 3 Select a Bluetooth device to connect to

■ Receiving data

- 1 Send data from the sender's Bluetooth device
- 2 Touch the status bar ▶ select data to receive ▶ [Accept]
- 3 Touch the status bar ▶ select data to receive

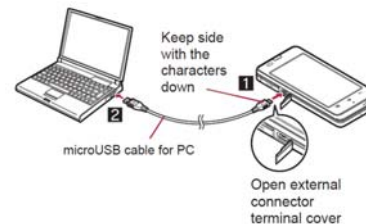
- Note that if you select [Delete all before registration] at receiving all data, all data registered to the target function are deleted.
- Some data cannot be received all.

- When available memory space in the save destination becomes insufficient, the data being received to that point are saved and receiving ends.

External connector device

Connecting the FOMA terminal and PC

- 1 Insert the FOMA terminal side connector of the microUSB cable for PC (sample) horizontally into the external connector terminal on the FOMA terminal (1)
- 2 Insert the PC side connector of the microUSB cable for PC horizontally into the USB connector on the PC (2)
 - For details on setting USB connection mode



- Use a USB cable “microUSB cable for PC”.
USB cables for PC are not available, since the connector shape is different.
- The use of a USB HUB may not work correctly.
- Do not remove the microUSB cable for PC while exchanging data with PC. Data may be damaged.
- Windows XP, Windows Vista and Windows 7 all of which are Japanese version are available OS for the connection.

Specific Absorption Rate (SAR) of Mobile Phone

This model SH-02D mobile phone complies with Japanese technical regulations and international guidelines regarding exposure to radio waves.

This mobile phone was designed in observance of Japanese technical regulations regarding exposure to radio waves (*1) and limits to exposure to radio waves recommended by a set of equivalent international guidelines. This set of international guidelines was set out by the International Commission on Non-Ionizing Radiation Protection (ICNIRP), which is in collaboration with the World Health Organization (WHO), and the permissible limits include a substantial safety margin designed to assure the safety of all persons, regardless of age and health condition.

The technical regulations and international guidelines set out limits for radio waves as the Specific Absorption Rate, or SAR, which is the value of absorbed energy in any 10 grams of tissue over a 6-minute period. The SAR limit for mobile phones is 2.0 W/kg. The highest SAR value for this mobile phone when tested for use at the ear is 0.477 W/kg. There may be slight differences between the SAR levels for each product, but they all satisfy the limit.

The actual SAR of this mobile phone while operating can be well below that indicated above. This is due to automatic changes to the power level of the device to ensure it only uses the minimum required to reach the network. Therefore in general, the closer you are to a base station, the lower the power output of the device.

This mobile phone can be used in positions other than against your ear. This mobile phone satisfies the international guidelines when used with a carrying case or a wearable accessory approved by NTT DOCOMO, INC. (*2). In case you are not using the approved accessory, please use a product that does not contain any metals, and one that positions the mobile phone at least 1.5 cm away from your body.

The World Health Organization has stated that present scientific information does not indicate that there are harmful effects attributed to the use of mobile devices. They recommend that if you are worried about your exposure then you can limit your usage or simply use a hands-free kit to keep the mobile device away from the head and body. Please refer to the WHO website if you would like more detailed information.

http://www.who.int/docstore/peh-emf/publications/facts_press/fact_english.htm

Please refer to the websites listed below if you would like more detailed information regarding SAR.

Ministry of Internal Affairs and Communications
Website:

<http://www.tele.soumu.go.jp/e/sys/ele/index.htm>

Association of Radio Industries and Businesses
Website:

<http://www.arib-emf.org/index02.html> (in Japanese only)

NTT DOCOMO, INC. Website:

<http://www.nttdocomo.co.jp/english/product/sar/>

SHARP Corporation Website:

<http://www.sharp.co.jp/products/menu/phone/cellular/sar/index.html> (in Japanese only)

*1 Technical regulations are defined by the Ministerial Ordinance Related to Radio Law (Article 14-2 of Radio Equipment Regulations).

*2 Regarding the method of measuring SAR when using mobile phones in positions other than against the ear, international standards (IEC62209-2) were set in March of 2010. On the other hand, technical regulation is currently being deliberated on by national council (As of July, 2011).

European RF Exposure Information

Your mobile device is a radio transmitter and receiver. It is designed not to exceed the limits for exposure to radio waves recommended by international guidelines. These guidelines were developed by the independent scientific organization ICNIRP and include safety margins designed to assure the protection of all persons, regardless of age and health.

The guidelines use a unit of measurement known as the Specific Absorption Rate, or SAR. The SAR limit for mobile devices is 2 W/kg and the highest SAR value for this device when tested at the ear was **0.403W/kg***.

As SAR is measured utilizing the devices highest transmitting power the actual SAR of this device while operating is typically below that indicated above. This is due to automatic changes to the power level of the device to ensure it only uses the minimum level required to reach the network.

The World Health Organization has stated that present scientific information does not indicate the need for any special precautions for the use of mobile devices. They note that if you want to reduce your exposure then you can do so by limiting the length of calls or using a hands-free device to keep the mobile phone away from the head.

* The tests are carried out in accordance with international guidelines for testing.

Declaration of Conformity

This declaration relates to the handset only.

CE0168 

In some countries/regions, such as France, there are restrictions on the use of Wi-Fi. If you intend to use Wi-Fi on the handset abroad, check the local laws and regulations beforehand.

Hereby, Sharp Telecommunications of Europe Ltd, declares that this SH-13C is in compliance with the essential requirements and other relevant provisions of Directive 1999/5/EC.
A copy of the original declaration of conformity can be found at the following Internet address:
<http://www.sharp.co.jp/k-tai/> (in Japanese only)

FCC Notice

- This device complies with part 15 of the FCC Rules.

Operation is subject to the following two conditions:

(1) This device may not cause harmful interference, and (2) this device must accept any interference received, including interference that may cause undesired operation.

- Changes or modifications not expressly approved by the manufacturer responsible for compliance could void the user's authority to operate the equipment.

Information to User

This equipment has been tested and found to comply with the limits of a Class B digital device, pursuant to Part 15 of the FCC Rules. These limits are designed to provide reasonable protection against harmful interference in a residential installation. This equipment generates, uses and can radiate radio frequency energy and, if not installed and used in accordance with the instructions, may cause harmful interference to radio communications.

However, there is no guarantee that interference will not occur in a particular installation; if this equipment does cause harmful interference to radio or television reception, which can be determined by turning the equipment off and on, the user is encouraged to try to correct the interference by one or more of the following measures:

1. Reorient/relocate the receiving antenna.
2. Increase the separation between the equipment and receiver.
3. Connect the equipment into an outlet on a circuit different from that to which the receiver is connected.
4. Consult the dealer or an experienced radio/TV technician for help.

FCC RF Exposure Information

Your handset is a radio transmitter and receiver. It is designed and manufactured not to exceed the emission limits for exposure to radio frequency (RF) energy set by the Federal Communications Commission of the U.S. Government.

The guidelines are based on standards that were developed by independent scientific organizations through periodic and thorough evaluation of scientific studies. The standards include a substantial safety margin designed to assure the safety of all persons, regardless of age and health. The exposure standard for wireless handsets employs a unit of measurement known as the Specific Absorption Rate, or SAR. The SAR limit set by the FCC is 1.6 W/kg.

The tests are performed in positions and locations (e.g., at the ear and worn on the body) as required by the FCC for each model. The highest SAR value for this model handset when tested for use at the ear is **0.348** W/kg and when worn on the body, as described in this user guide, is **0.460** W/kg.

Body-worn Operation; This device was tested for typical body-worn operations with the back of the handset kept 1.0 cm from the body. To maintain compliance with FCC RF exposure requirements, use accessories that maintain a 1.0 cm separation distance between the user's body and the back of the handset. The use of beltclips, holsters and similar accessories should not contain metallic components in its assembly.

The use of accessories that do not satisfy these requirements may not comply with FCC RF exposure requirements, and should be avoided. The FCC has granted an Equipment Authorization for this model handset with all reported SAR levels evaluated as in compliance with the FCC RF emission guidelines. SAR information on this model handset is on file with the FCC and can be found under the Display Grant section of <http://www.fcc.gov/oet/ea/fccid/> after searching on FCC ID **APYHRO00160**.

Additional information on Specific Absorption Rates (SAR) can be found on the Cellular Telecommunications & Internet Association (CTIA) Website at <http://www.ctia.org/>.

Export Administration Regulations

The Japan Export Administration Regulations ("Foreign Exchange and International Trade Law" and its related laws) will be applied to this product and its accessories under certain conditions. The Export Administration Regulations are also applied. To export or reexport this terminal and its accessories, conduct all legally required procedures at your own risk and expense. For details on the procedures, contact the Ministry of Economy, Trade and Industry or the US Department of Commerce.

Intellectual Property Right

Copyrights and rights of portrait


- Data with third party copyrights such as text, images, music and software that is downloaded or acquired via Internet web pages or shot by the FOMA terminal cannot be duplicated, altered or publicly transmitted without rightful party's consent. Only duplicating, quoting, etc. for personal use is permitted under copyright laws. Even if for personal use, filming and recording may be prohibited for demonstrations, performances and exhibitions. Also, shooting another's image or posting another's image on Internet web pages without their consent may constitute a violation of one's right to their image.

Registered trademarks and trademarks

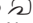
- "FOMA", "ToruCa", "mopera", "mopera U", "Deco-mail", "i-appli", "i-mode", "i-Channel", "iD", "WORLD WING", "WORLD CALL", "Melody call", "Area Mail", "sp-mode", "koe-no-takuhaibin", the "iD" logo are trademarks or registered trademarks of NTT DOCOMO, INC.
- "Catch Phone (Call waiting service)" is a registered trademark of Nippon Telegraph and Telephone Corporation.
- "Multitask" is a registered trademark of NEC Corporation.
- Microsoft®, Windows®, Windows Media®, Windows Vista®, PowerPoint® and Exchange® are trademarks or registered trademarks of Microsoft Corporation in the United States and/or other countries.

- Microsoft Excel and Microsoft Word are product names of Microsoft Corporation in the U.S.A.
- Java and all Java based trademarks and logos are trademarks or registered trademarks of Sun Microsystems, Inc. in the U.S and other countries.
- QR code is a registered trademark of Denso Wave Inc.
- microSDHC Logo is a trademark of SD-3C, LLC.



- Included Document Viewer is Documents To Go provided by DataViz, Inc. © 2011 DataViz, Inc. and its licensors. All rights reserved. DataViz, Documents To Go and InTact Technology are trademarks or registered trademarks of DataViz, Inc.
- This handset features LCFONT, developed by Sharp Corporation, to make the LCD easier to view and read. LCフォント/LCFONT and  are registered trademarks of Sharp Corporation.
- Rovi, G-GUIDE, G-GUIDE MOBILE and G-Guide related logos are trademarks or registered trademarks of Rovi Corporation and/or its subsidiaries in Japan.



- OBEX™, IrSimple™, IrSS™ or IrSimpleShot™ are trademarks of Infrared Data Association®.
-  is a registered trademark of FeliCa Networks, Inc.
- FrameSolid®, PhotoScouter® and TrackSolid® are registered trademarks of Morpho, Inc.

- **AOSS™** and **AOSS™** are the trademarks of BUFFARO INC.
- **Wi-Fi®** is a registered trademark of Wi-Fi Alliance®.
- **Wi-Fi Protected Setup™** and **Wi-Fi Protected Setup logo** are trademarks of Wi-Fi Alliance®. The **Wi-Fi Protected Setup Mark** is a mark of the Wi-Fi Alliance.
- “**mixi**” is a registered trademark of mixi, Inc.
- “**Twitter**” is a registered trademark of Twitter, Inc.
- “**mosimo camera®**” is a trademark of AITIA Corporation.
- **DLNA®**, the **DLNA Logo** and **DLNA CERTIFIED™** are trademarks, service marks, or certification marks of the Digital Living Network Alliance. Sharp Corporation has acquired DLNA certification for the device.
- This product includes software developed by the OpenSSL Project for use in the OpenSSL Toolkit. (<http://www.openssl.org/>)
- This product includes cryptographic software written by Eric Young(eay@cryptsoft.com)
- Portions Copyright © 2004 Intel Corporation This product partly uses the software of Intel Corporation.
- **iWnn** of **OMRON SOFTWARE Co., Ltd.** is used for conversion methods for Japanese language, and for phrase prediction methods for English. **iWnn® OMRON SOFTWARE Co., Ltd.** 2008-2011 All Rights Reserved. **iWnn IME © OMRON SOFTWARE Co., Ltd.** 2009-2011 All Rights Reserved.
- “**らくらく瞬漢ルーベ®**”, “**らくらく瞬英ルーベ®**” and “**Household account Photo money™**” are trademarks or registered trademarks of Information System Products Co., Ltd.
- Powered by **emblend™** Copyright 2010-2011 Aplix Corporation. All Rights Reserved.
- **Shin Go R**, the font type installed in this product, is provided by Morisawa & Company, Ltd. * **Shin Go R** is a registered trademark of Morisawa & Company, Ltd.
- **MyScript® Stylus Mobile** is a trademark of VISION OBJECTS.
- “**Qi**” and the **Φ** symbol are trademarks of the Wireless Power Consortium.
- “**GALAPAGOS**”, “**GALAPAGOS SQUARE**”, “**AQUOS**”, “**AQUOS PHONE**”, “**TapFlow**”, “**VeilView**”, “**FAMILINK**”, “**Round Home**” and “**AQUOS PHONE**” logo are trademarks or registered trademarks of Sharp Corporation.
- All other company names and product names are trademarks or registered trademarks of the respective companies.

Others

- **F e l i C a** is a contactless IC card technology developed by Sony Corporation. **F e l i C a** is a registered trademark of Sony Corporation.
- Under the **MPEG-4 Visual Patent Portfolio License**, customers have licensed permission for the following use of this product to engage in non-profit personal use. Other uses are not permitted.

- Encoding MPEG-4 standard video (henceforth referred to as MPEG-4 video).
- Decoding an MPEG-4 video that a customer not engaged in personal commercial activities has encoded.
- Decoding an MPEG-4 video obtained from a licensed provider.

For details on other intended uses, contact MPEG LA, LLC.

- This product is licensed under the MPEG-4 Systems Patent Portfolio License for encoding in compliance with the MPEG-4 Systems Standard. An additional license and payment of royalties are necessary in the following cases.
 - Data stored or replicated in physical media which is paid for on a title by title basis.
 - Data which is paid for on a title by title basis and is transmitted to an end user for permanent storage and/or use.
 Such additional license may be obtained from MPEG LA, LLC. Contact MPEG LA, LLC for additional details.
- This product is licensed under the AVC patent portfolio license for the personal and noncommercial use of a consumer to (i) encode video in compliance with the AVC standard (henceforth referred to as AVC video) and/or (ii) decode AVC video that was encoded by a consumer engaged in a personal and noncommercial activity and/or was obtained from a video provider licensed to provide AVC video. No license is granted or shall be implied for any other use. Additional information may be obtained from MPEG LA, L.L.C. See <http://www.mpegla.com>

- This product is licensed under the VC-1 Patent Portfolio License for the personal and noncommercial use of a consumer to (i) encode video in compliance with the VC-1 standard (henceforth referred to as VC-1 video) and/or (ii) decode VC-1 video that was encoded by a consumer engaged in a personal and noncommercial activity and/or was obtained from a video provider licensed to provide VC-1 video. No license is granted or shall be implied for any other use. Additional information may be obtained from MPEG LA, L.L.C. See <http://www.mpegla.com>
- Contains Adobe® Flash® Player and Adobe Reader® Mobile technology by Adobe Systems Incorporated. All rights reserved. Adobe Flash Player Copyright © 1996-2011 Adobe Systems Incorporated. All rights reserved. Adobe Reader Mobile Copyright © 1993-2011 Adobe Systems Incorporated. All rights reserved. Adobe, Adobe Reader, Flash and Flash logo are either registered trademarks or trademarks of Adobe Systems Incorporated in the United States and/or other countries. Depending on the contents to play, the latest version of Flash Player may be required.



- When you use Flash Player, you shall agree with following conditions:
 - (i) a prohibition against distribution and copying,
 - (ii) a prohibition against modifications and derivative works,
 - (iii) a prohibition against decompiling, reverse engineering, disassembling, and otherwise reducing the software to a human-perceivable form,
 - (iv) a provision indicating ownership of software by Partner and its suppliers,
 - (v) a disclaimer of indirect, special, incidental, punitive, and consequential damages, and
 - (vi) a disclaimer of all applicable statutory warranties, to the full extent allowed by law.
- Content owners use Microsoft PlayReady™ content access technology to protect their intellectual property, including copyrighted content. This device uses PlayReady technology to access PlayReady-protected content and/or WMDRM-protected content. If the device fails to properly enforce restrictions on content usage, content owners may require Microsoft to revoke the device's ability to consume PlayReady-protected content. Revocation should not affect unprotected content or content protected by other content access technologies. Content owners may require you to upgrade PlayReady to access their content. If you decline an upgrade, you will not be able to access content that requires the upgrade.
- CP8 PATENT
- The abbreviations of operating systems (Japanese versions) below are used in this manual.
 - Windows 7 stands for Microsoft® Windows® 7 (Starter, Home Basic, Home Premium, Professional, Enterprise and Ultimate).
 - Windows Vista stands for Windows Vista® (Home Basic, Home Premium, Business, Enterprise and Ultimate).
 - Windows XP indicates the Microsoft® Windows® XP Professional operating system or Microsoft® Windows® XP Home Edition operating system.
- The Bluetooth word mark and logos are owned by the Bluetooth SIG, INC. and any use of such marks by NTT DOCOMO, INC. is under license. Other trademarks and trade names are those of their respective owners.
- Google, Google logo, Android, Android Market, Gmail, Google Maps, Google Talk, Google Maps Navigation, Google Latitude, Google Places, Google Voice Search, YouTube, and YouTube logo are trademarks or registered trademarks of Google Inc.

- The HMM-Based Speech Synthesis System (HTS)
 - hts_engine API developed by HTS Working Group
 - <http://hts-engine.sourceforge.net/>
 - Copyright©
 - 2001-2010 Nagoya Institute of Technology, Department of Computer Science
 - 2001-2008 Tokyo Institute of Technology, Interdisciplinary Graduate School of Science and Engineering
 - All rights reserved.
 - Redistribution and use in source and binary forms, with or without modification, are permitted provided that the following conditions are met:
 - Redistributions of source code must retain the above copyright notice, this list of conditions and the following disclaimer.
 - Redistributions in binary form must reproduce the above copyright notice, this list of conditions and the following disclaimer in the documentation and/or other materials provided with the distribution.

- Neither the name of the HTS working group nor the names of its contributors may be used to endorse or promote products derived from this software without specific prior written permission.

THIS SOFTWARE IS PROVIDED BY THE COPYRIGHT HOLDERS AND CONTRIBUTORS "AS IS" AND ANY EXPRESS OR IMPLIED WARRANTIES, INCLUDING, BUT NOT LIMITED TO, THE IMPLIED WARRANTIES OF MERCHANTABILITY AND FITNESS FOR A PARTICULAR PURPOSE ARE DISCLAIMED. IN NO EVENT SHALL THE COPYRIGHT OWNER OR CONTRIBUTORS BE LIABLE FOR ANY DIRECT, INDIRECT, INCIDENTAL, SPECIAL, EXEMPLARY, OR CONSEQUENTIAL DAMAGES (INCLUDING, BUT NOT LIMITED TO, PROCUREMENT OF SUBSTITUTE GOODS OR SERVICES; LOSS OF USE, DATA, OR PROFITS; OR BUSINESS INTERRUPTION) HOWEVER CAUSED AND ON ANY THEORY OF LIABILITY, WHETHER IN CONTRACT, STRICT LIABILITY, OR TORT (INCLUDING NEGLIGENCE OR OTHERWISE) ARISING IN ANY WAY OUT OF THE USE OF THIS SOFTWARE, EVEN IF ADVISED OF THE POSSIBILITY OF SUCH DAMAGE.