

General Inquiries  
<docomo Information Center>

Repairs

(Business hours: 24 hours (open all year round))

■ From DOCOMO mobile phones ■ From land-line phones  
(In Japanese only) (In Japanese only)

☎ (No prefix) 113 (toll free) ☎ 0120-800-000 (toll free)

※ Unavailable from land-line phones, etc. ※ Unavailable from part of IP phones.

☎ (No prefix) 151 (toll free) ☎ 0120-800-000 (toll free)

※ Unavailable from land-line phones, etc. ※ Unavailable from part of IP phones.

● Please confirm the phone number before you dial.

● For Applications or Repairs and After-Sales Service, please contact the above-mentioned information center or the docomo Shop etc. near you on the NTT DOCOMO website or the i-mode site.

NTT DOCOMO website <http://www.nttdocomo.co.jp/english/>

i-mode site iMenu ▶ お客様サポート (user support) ▶ ドコモショップ (docomo Shop) ※ In Japanese only

NTT  
docomo

SH-05D

Loss or theft of FOMA terminal or  
payment of cumulative cost overseas  
<docomo Information Center>

(available 24 hours a day)

From DOCOMO mobile phones

International call access code  
for the country you stay -81-3-6832-6600\* (toll free)

\* You are charged a call fee to Japan when calling from a land-line phone, etc.  
※ If you use SH-10C, you should dial the number +81-3-6832-6600  
(to enter "+", press and hold the "0" key for at least one second).

From land-line phones

<Universal number>

Universal number  
international prefix -8000120-0151\*

\* You might be charged a domestic call fee according to the call rate for the country you stay.  
※ For international call access codes for major countries and universal number international prefix, refer to DOCOMO International Services website.

● If you lose your FOMA terminal or have it stolen, immediately take the steps necessary for suspending the use of the FOMA terminal.

● If the FOMA terminal you purchased is damaged, bring your FOMA terminal to a repair counter specified by DOCOMO after returning to Japan.



Don't forget your mobile phone... or your manners!

When using your mobile phone in a public place, don't forget to show common courtesy and consideration for others around you.

Failures encountered overseas  
<Network Support and Operation Center>

(available 24 hours a day)

From DOCOMO mobile phones

International call access code  
for the country you stay -81-3-6718-1414\* (toll free)

\* You are charged a call fee to Japan when calling from a land-line phone, etc.  
※ If you use SH-10C, you should dial the number +81-3-6718-1414  
(to enter "+", press and hold the "0" key for at least one second).

From land-line phones

<Universal number>

Universal number  
international prefix -8005931-8600\*

\* You might be charged a domestic call fee according to the call rate for the country you stay.  
※ For international call access codes for major countries and universal number international prefix, refer to DOCOMO International Services website.

Sales: NTT DOCOMO, INC.  
Manufacturer: SHARP Corporation



Li-ion00

To prevent damage to the environment,  
bring used battery packs to a docomo  
service counter, a docomo agent or a  
recycle center.

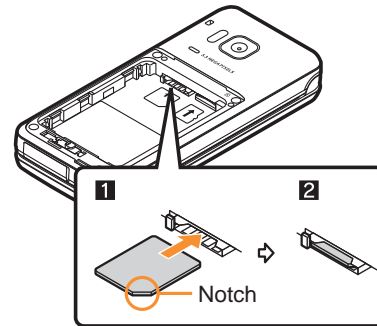
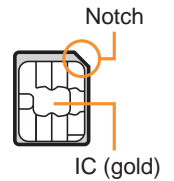


## Before Using

### Inserting docomo mini UIM card

- 1 Set docomo mini UIM card into docomo mini UIM card slot with the IC (gold) side turned down **(1)**

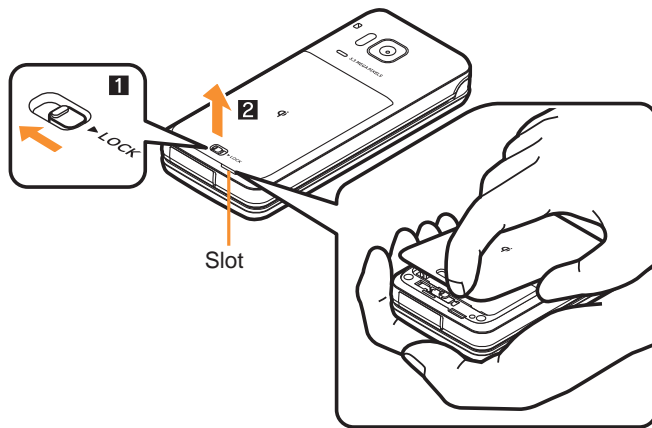
- Insert docomo mini UIM card securely **(2)**.



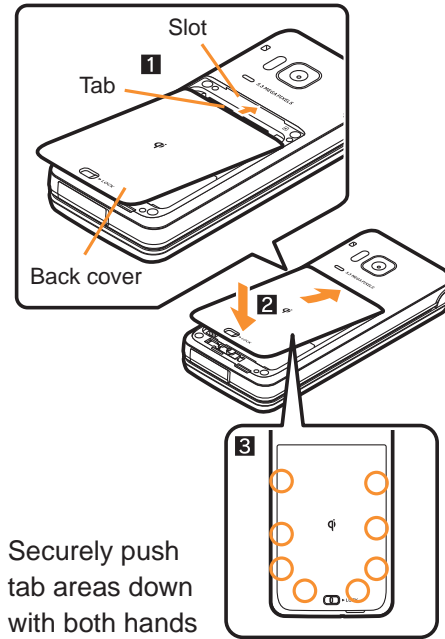
- Note that pulling forcibly or adding forces on the lever may damage it.
- Note that inserting or removing the docomo mini UIM card forcibly may damage the docomo mini UIM card.

## Attaching battery pack

- Perform with the FOMA terminal turned off and closed while holding with your both hands.
  - The battery pack is not waterproof/dust-proof.
- 1 **Slide the back cover lever in the direction of the arrow (1) to unlock and remove the back cover (2)**
    - The FOMA terminal has a slot to remove the back cover. Securely hold the FOMA terminal as shown in the illustration to prevent excessive force on the back cover and hook a nail on the slot and remove the back cover upward.

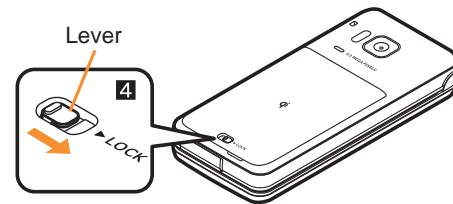


- The back of the back cover has also eight tabs to insert the back cover. Securely push tab areas down with both hands so that gaps are not left between the FOMA terminal and the back cover.



Securely push tab areas down with both hands

- 4 **Slide the back cover lever in the direction of the arrow (4) to lock**

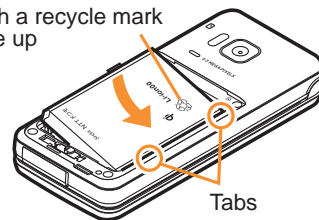


- Using unnecessary force when attaching or removing the battery pack may damage the connector terminal for the battery pack (charger terminal) on the FOMA terminal.

### 2 Attach the battery pack

- Turn the recycle mark side of the battery pack up, match tabs and attach the battery pack.

With a recycle mark side up

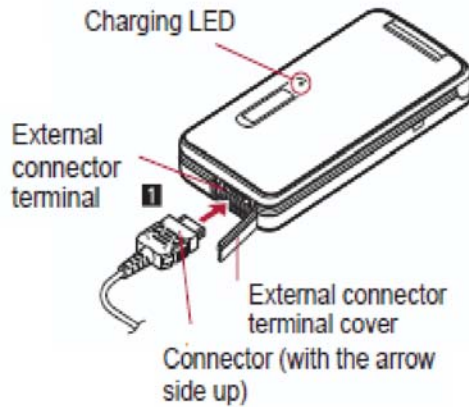


- 3 **Insert the tab of the top of the back cover into the FOMA terminal slot (1), attach it in the direction of the arrow (2) and securely push down with both hands (3)**

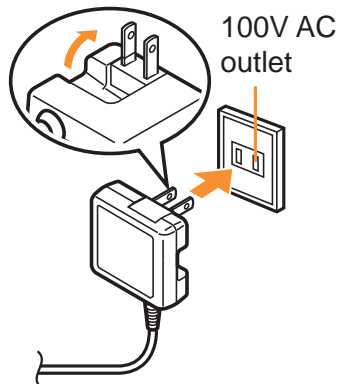
## Charging by using AC adapter

- Read the user's guide of FOMA AC Adapter 01/02 (sold separately).

### 1 Open the external connector terminal cover and insert the AC adapter horizontally into the external connector terminal (1)

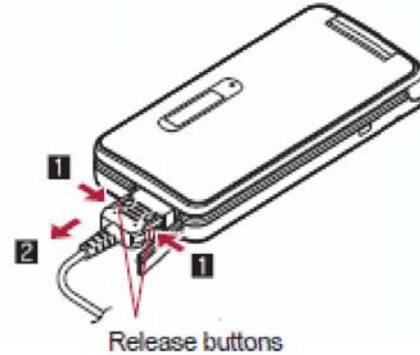


### 2 When inserting the AC adapter power plug into an outlet, charge alert is heard, charging LED illuminates, and charging starts



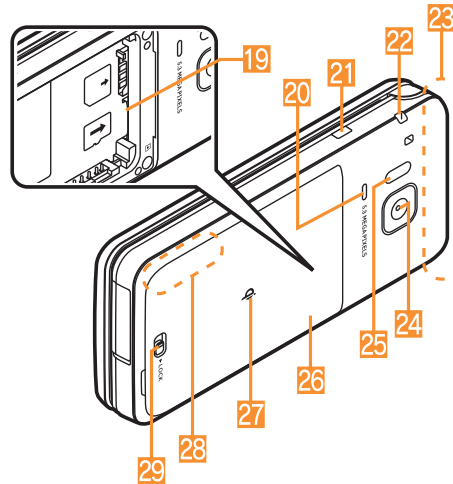
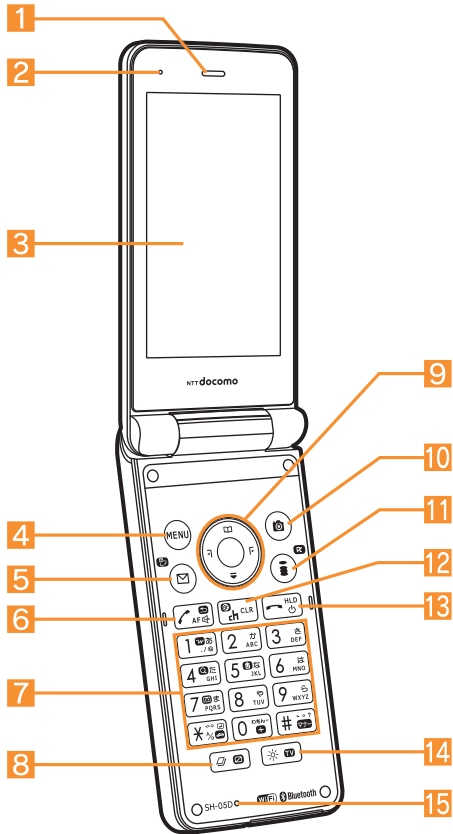
### 3 When charge alert is heard and charging LED turns off, charging is complete

- When removing the connector, always hold the release buttons on both sides (1) and unplug it horizontally (2).



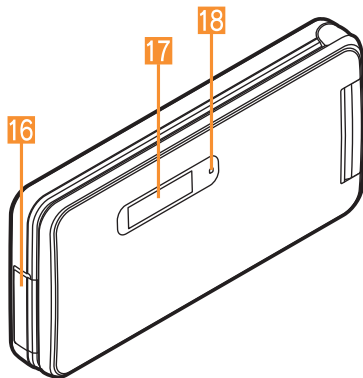
- Do not forcibly insert or remove. May cause damage to the external connector terminal and the connector or result in malfunction.

## Part Names and Functions



● Key illustrations may look different from actual keys.

- |   |                                |
|---|--------------------------------|
| 1 Earpiece                                      | 17 Sub display                 |
| 2 Air vent                                      | 18 Called/Charging LED         |
| 3 Main display                                  | 19 microSD Card slot           |
| 4 MENU: MENU/Operation guidance key             | 20 Speaker                     |
| 5 [Envelope icon]: Mail/Operation guidance key  | 21 [Square key icon]: Side key |
| 6 [Phone icon]: Start/Hands-free key            | 22 Strap hole                  |
| 7 [1-9, *, 0, #]: Dial/Character entry keys     | 23 FOMA antenna                |
| 8 [Book icon]: Multi/VeilView key               | 24 Camera                      |
| 9 [Crosshair icon]: Multi-guide key             | 25 Infrared port               |
| 10 [Camera icon]: Camera/Operation guidance key | 26 Back cover                  |
| 11 [i-mode icon]: i-mode/Operation guidance key | 27 Φ mark                      |
| 12 [CLR (ch) icon]: i-Channel/Clear key         | 28 Bluetooth/Wi-Fi antenna     |
| 13 [Power icon]: Power/End key                  | 29 Back cover lever            |
| 14 [Sun icon]: Bright/TV key                    |                                |
| 15 Mouthpiece/Microphone                        |                                |
| 16 External connector terminal                  |                                |



## Viewing display



Icon display area

## Main icons

	Battery level → (High ←————→ Low)
	Signal status → (Strong ↔ Weak) ● When [圏外] appears, the handset is outside the service area or in a place with no signal.
	i-mode
	Wi-Fi
	Ir communication
	Hands-free
	i-mode mail/SMS/Area Mail/ Information received
	i-appli
	Alarm/Schedule
	Software update
	microSD Card
	Public mode (Drive mode)
	Silent/Vibrator
	Manner mode
	Keypad dial lock
	Record message
	VeilView

	docomo mini UIM card error
	Self mode
	Music&Video Channel program reservation
	Brightmode
	3G
	Bluetooth
	Music&Video Channel
	Personal data lock
	1Seg recording
	USB connection

## Basic Operations

### Turning power on

- 1 (for at least 2 seconds)
  - Press for at least 2 seconds to turn the power off.

### Changing screen display to English

- 1 In the Normal menu, [本体設定] (Setting) ▶ [文字表示/入力] (Text display/input) ▶ [Select language] ▶ [English]

### Making initial setting

- 1 [Date and time setting] ▶ set the date and time
- 2 [Password] ▶ register a terminal security code
- 3 [Keypad sound] ▶ set the keypad sound
- 4 [Text size] ▶ set the font size collectively
- 5

### Checking your own phone number

- 1 In the Normal menu, [Profile]

## Character entry

### ■ Switching entry modes



1 In the character entry screen, 



2 Select the entry mode

### ■ Entering characters

Ex.) When entering “電話”

1 In the character entry screen, enter “でんわ”

- でんわ:  (four times)  (once)  (three times)   (once)



- To enter multiple characters assigned to the same key: Enter a character   enter a character

2 

3 



### ■ Entering pictograms/symbols





1 In the character entry screen, 

- To switch between pictogram/Deco-mail pictogram/Deco-mail picture: 
- To switch between single- and double-byte symbols: 

2 Select a pictogram/symbol



### ■ Entering emoticons

1 In the character entry screen,  




- For a mail message: In the character entry screen,    

2 Select a category  select an emoticon

## Changing ring tone

1 In the Normal menu,  




2 Select an item

- ◆ 
- ◆ 
- ◆  select an item

3 Set each item  

## Lock/Security

### Changing terminal security code




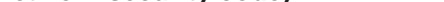
1 In the Normal menu,    enter the current terminal security code

2 Enter the new terminal security code

3 Enter the new terminal security code again

4 

### Changing network security code

1 In stand-by,    






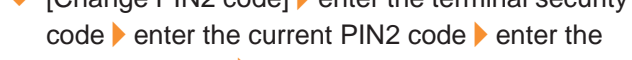





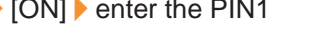
### Changing i-mode password

1 In stand-by,    

### Setting PIN code

1 In the Normal menu,   

2 Select an item

- ◆  enter the terminal security code  enter the current PIN1 code  enter the new PIN1 code  enter the new PIN1 code again 
- ◆  enter the terminal security code  enter the current PIN2 code  enter the new PIN2 code  enter the new PIN2 code again 
- ◆   enter the PIN1 code

## Various lock functions

### ■ All lock


- 1 In the Normal menu, [Setting] ▶ [Lock/Security] ▶ [Lock settings] ▶ [All lock] ▶ enter the terminal security code

### ■ Omakase Lock

Omakase Lock is a service to lock the personal data in case of loss, etc. by only your request to DOCOMO via phone.

- Refer to “Mobile Phone User’s Guide [Basic Usage]” for details on Omakase Lock.

### Set/Release Omakase Lock

 0120-524-360 Office hours: 24 hours (in Japanese only) (open all year round)

- ※ Unavailable from part of IP phones.
- ※ Omakase Lock can also be set/released from the My docomo website using PCs.

### ■ Self mode

- 1 In the Normal menu, [Setting] ▶ [Other setting] ▶ [Self mode] ▶ select the setting ▶ [Yes]

### ■ Personal data lock

- 1 In the Normal menu, [Setting] ▶ [Lock/Security] ▶ [Lock settings] ▶ [Personal data lock] ▶ enter the terminal security code ▶ select the setting

### ■ Keypad dial lock




- 1 In the Normal menu, [Setting] ▶ [Lock/Security] ▶ [Keypad dial lock] ▶ enter the terminal security code ▶ select the setting

### ■ Auto-key lock

- 1 In the Normal menu, [Setting] ▶ [Lock/Security] ▶ [Lock settings] ▶ [Auto-key lock] ▶ select the lock type ▶ enter the terminal security code ▶ set each item ▶ 

## Incoming call restriction

### ■ Setting response to a call with no caller ID




- 1 In the Normal menu, [Setting] ▶ [Lock/Security] ▶ [Call rejection setting]
- 2 Select an item
  - ◆ [Anonymous] ▶ enter the terminal security code ▶ set each item ▶ 
  - ◆ [Payphone] ▶ enter the terminal security code ▶ set each item ▶ 
  - ◆ [Unavailable] ▶ enter the terminal security code ▶ set each item ▶ 

### ■ Rejecting a call from a caller unset in phonebook



- 1 In the Normal menu, [Setting] ▶ [Lock/Security] ▶ [Call rejection setting]
- 2 [Unregistered caller] ▶ enter the terminal security code ▶ select the setting

## Voice/Videophone Calls



### Making a voice/videophone call

- 1 In stand-by, enter a phone number
- 2  (Phone)/ (V.phone)
- 3  to end the call

### Receiving a voice/videophone call

- 1 When a call is received, the ring tone sounds and the called LED flashes
- 2 
- 3  to end the call

### Making a call with redials/received calls

- 1 In the Normal menu, [TEL function] ▶ [Dialed/Received calls] ▶ [Received calls]/[Redial]
- 2 Point the cursor to the history
- 3  (Phone)/ (V.phone)



## Using overseas

### ■ Making a call to outside the country you stay in (including Japan)

- 1 In stand-by, enter “+” (☎ for at least 1 second), country code, area code (city code) and other party’s phone number

- When the area code (city code) begins with “0”, omit the “0” when dialing (Include “0” when making a call to some countries or regions such as Italy).

- 2 ☎ (Phone)/☎ (V.phone)

### ■ Making a call in country you stay

- 1 In stand-by, enter a phone number

- 2 ☎ (Phone)/☎ (V.phone)

### ■ Making a call to WORLD WING user overseas

When you make a call to a WORLD WING user overseas, you make a call as an international call to Japan regardless of your country of stay.

- 1 In stand-by, enter “+” (☎ for at least 1 second), country code “81” (Japan) and the other party’s mobile phone number excluding the first “0”

- 2 ☎ (Phone)/☎ (V.phone)

## Mail

### Sending i-mode mail

- 1 In stand-by, ☑ ▶ [Compose message]
- 2 [<No address>] ▶ enter an address
- 3 Select the SUB field ▶ enter a subject
- 4 [Message] ▶ enter a message
- 5 ☎

### Checking new i-mode mail

- 1 In stand-by, ☑ ▶ [Check new mail/message]

### Replying to i-mode mail

- 1 In the received mail details screen, ☐ ▶ [Reply/Forward]
- 2 Select the reply method
- 3 Compose and send a mail

### Displaying a mail in Inbox/Outbox/Unsent box

- 1 In stand-by, ☑
- 2 Select a box
- 3 Select a mail




## Phonebook

### Adding phonebook entries



- 1 In the Normal menu, [TEL function] ▶ [Phonebook] ▶ [Add to phonebook]/[UIM operation]
- 2 Set each item ▶ ☎

## Camera

### Shooting still pictures

- 1 In stand-by, 
- 2 /□
- 3 /□

### Shooting moving pictures

- 1 In the Normal menu, [CAMERA/TV/MUSIC] ▶  
[Camera] ▶ [Movie shooting]
- 2 /□
- 3 /□ to end shooting
- 4 [Save]

### Displaying shot still pictures


- 1 In the Normal menu, [Data box] ▶ [My picture]
- 2 [Camera] folder ▶ select a still picture

### Playing shot moving pictures

- 1 In the Normal menu, [Data box] ▶ [i-motion/  
Movie]
- 2 [Camera] folder ▶ select a moving picture

### Watching 1Seg

### Setting channels

- 1 In the Normal menu, [CAMERA/TV/MUSIC] ▶  
[1Seg] ▶ [Channel setting]
  - When the confirmation screen appears: [Yes] ▶  
proceed to step 3
- 2  ▶ [Create]
- 3 Select the registration method
  - ◆ [Use preset]
  - ◆ [Auto setting] ▶ [Yes]
    - If you do not select an area: [No] ▶ proceed to  
step 6
- 4 Select an area
- 5 Select a prefecture/district

### 6 [Yes]

### Watching 1Seg

- 1 In the Normal menu, [CAMERA/TV/MUSIC] ▶  
[1Seg] ▶ [Activate 1Seg]

### Playing recorded videos

- 1 In the Normal menu, [Data box] ▶ [1Seg]
- 2 [Video] folder ▶ select a video

### Music Playback

### Using Music&Video Channel

The Music&Video Channel service is provided in Japanese.

- 1 In the Normal menu, [CAMERA/TV/MUSIC] ▶  
[Music&Video Channel]
- 2 Select a program

### Using MUSIC Player

- 1 In the Normal menu, [Data box] ▶ [MUSIC]
- 2 Select music data

### Network Services

### Setting Voice Mail Service

Voice Mail Service is a paid option (monthly fees apply) that requires subscription.

- 1 In the Normal menu, [TEL function] ▶ [Voice mail  
service]
- 2 [Activate] ▶ [Yes] ▶ [Yes] ▶ enter the ringing  
time ▶ [OK]


### Setting Call waiting service

Call waiting service is a paid option (monthly fees apply) that requires subscription.

- 1 In the Normal menu, [TEL function] ▶ [Other  
network service] ▶ [Call waiting]
- 2 [Activate] ▶ [Yes] ▶ [OK]

## Setting Call Forwarding Service



Call Forwarding Service is a free option (no monthly fees) that requires subscription.

- 1 In the Normal menu, [TEL function] ▶ [Other network service] ▶ [Call forwarding]
- 2 [Activate] ▶ [Yes] ▶ [Yes] ▶ enter a phone number ▶  ▶ [Yes] ▶ enter the ringing time ▶ [OK]

## Bluetooth function

- The Bluetooth word mark and logos are owned by the Bluetooth SIG, INC. and any use of such marks by NTT DOCOMO, INC. is under license. Other trademarks and trade names are those of their respective owners.

## Registering Bluetooth devices on FOMA terminal

- Switch the other party's Bluetooth device to the registration stand-by status in advance.
- 1 In the Normal menu, [Tool] ▶ [Bluetooth] ▶ [List/cnct/discnct]
    - The device list screen appears when registered device exists. Press  and proceed to step 3.
  - 2 [Yes]
  - 3 Point the cursor to the Bluetooth device to register ▶  ▶ [Register Devices]
  - 4 Enter the Bluetooth passkey

## Connecting with Bluetooth devices

- 1 In the Normal menu, [Tool] ▶ [Bluetooth] ▶ [List/cnct/discnct]
- 2 Select a Bluetooth device to connect to

## General Notes

### Options and related devices

- Battery Pack SH34
- FOMA AC Adapter 01 for Global use
- FOMA AC Adapter 01/02
- Wireless Charger SH01

### Main specifications

Size	110 (H) × 50 (W) × 17.3 (D) mm (18.1 mm at thickest point) (when folded)*	
Weight	132 g (with battery pack attached)*	
Continuous talk time	FOMA/3G	Voice call: 270 min*
		Videophone: 130 min*
Continuous stand-by time	FOMA/3G	At rest : 770 hr*
Charge time	FOMA AC Adapter 01/02	●● min*
	FOMA DC Adapter 01/02	●● min*
	Wireless Charger SH01	220 min*

\* Approximate value

## Using Wi-Fi

**The FOMA terminal supports Wi-Fi and allows you to connect to the Internet using Full Browser via the access point at home or public wireless LAN service.**

### IEEE 802.11n

- 5.2GHz/5.3GHz/5.6GHz (W52/W53/W56) is not supported.
- MIMO (Multiple Input Multiple Output) is not supported.
- 40MHz radio-frequency bandwidth system (HT40) is not supported.

## Using access point mode


Set the FOMA terminal to the access point (base unit) and connect the Wi-Fi compatible device (sub unit) to use services such as playing games.

Also, use the FOMA terminal as an access point to connect Wi-Fi compatible devices within local area network.

- An access point mode is not available overseas.
- The Internet service provider, compatible with Wi-Fi connection such as mopera U, is used for an access point mode.
- Packet communication charges when using an access point mode are same as when connecting a PC or PDA, etc. Note that making a communication with large-volume data will lead to higher communication charges.



## ☰ Setting use of access point mode

- 1 In the Normal menu, [Tool] ▶ [Wi-Fi] ▶ [AP mode (base unit)]
  - The access point mode screen appears.

- 2 Select an item
  - ◆ [Start AP mode]/[Start AP mode (local)]
  - ◆ [Cnncted dev(sub) list] ▶ select the Wi-Fi compatible device ▶ set each item ▶ 
  - ◆ [Stop AP mode] ▶ [Yes]

## ☰ Setting access point mode

- 1 In the access point mode screen, 



- 2 Select an item
  - ◆ [Wireless setting] ▶ enter the terminal security code ▶ set each item ▶ 
  - ◆ [Host (APN) list]
  - ◆ [External device list] ▶ select a Wi-Fi compatible device ▶ set each item ▶ 
  - ◆ [Set local transmission] ▶ select the setting
  - ◆ [Reset settings] ▶ enter the terminal security code ▶ [Yes]

## Using client mode

You can connect to the access point at home or public wireless LAN service via Wi-Fi and use the Internet.

## ☰ Setting use of client mode

- 1 In the Normal menu, [Tool] ▶ [Wi-Fi] ▶ [Client mode (sub)]

- 2 Select an item
  - ◆ [Connection(automatic)]
  - ◆ [Register new host] ▶ select the registration method
  - ◆ [Host list] ▶ point the cursor to the access point ▶  ▶ set each item ▶ 
  - ◆ [Disconnect/Stop]

## Checking azimuth

Display an electronic compass to check the direction that the FOMA terminal is headed to.

- 1 In the Normal menu, [Tool] ▶ [Compass]

## Connecting to PC

**By connecting the FOMA terminal and your PC, exchange WMA files and images in the microSD Card. In addition, connect to the Internet and perform data communication.**

- FOMA USB Cable with Charge Function 02 (sold separately) or FOMA USB Cable (sold separately) is required.
- For a data communication, installation of the “FOMA communication configuration file” (Driver) is required.

Refer to “Manual for PC Connection” for details.

You can download “FOMA communication configuration file” and “Manual for PC Connection” from the DOCOMO website.

<http://www.nttdocomo.co.jp/support/> (in Japanese only)

## DOCOMO Connection Manager

“DOCOMO Connection Manager” is a software which is convenient for using data communication of DOCOMO. Easily set the PC depending on the subscription. In addition, use the charge counter function to check the approximate amounts of data communication or usage fee.

Refer to the DOCOMO website for details.

[http://www.nttdocomo.co.jp/support/utilization/application/service/connection\\_manager/](http://www.nttdocomo.co.jp/support/utilization/application/service/connection_manager/) (in Japanese only)

## Specific Absorption Rate (SAR) of Mobile Phone

### **This model SH-05D mobile phone complies with Japanese technical regulations and international guidelines regarding exposure to radio waves.**

This mobile phone was designed in observance of Japanese technical regulations regarding exposure to radio waves (\*1) and limits to exposure to radio waves recommended by a set of equivalent international guidelines. This set of international guidelines was set out by the International Commission on Non-Ionizing Radiation Protection (ICNIRP), which is in collaboration with the World Health Organization (WHO), and the permissible limits include a substantial safety margin designed to assure the safety of all persons, regardless of age and health condition.

The technical regulations and international guidelines set out limits for radio waves as the Specific Absorption Rate, or SAR, which is the value of absorbed energy in any 10 grams of tissue over a 6-minute period. The SAR limit for mobile phones is 2.0 W/kg. The highest SAR value for this mobile phone when tested for use at the ear is 0.703W/kg. There may be slight differences between the SAR levels for each product, but they all satisfy the limit.

The actual SAR of this mobile phone while operating can be well below that indicated above. This is due to automatic changes to the power level of the device to ensure it only uses the minimum required to reach the network. Therefore in general, the closer you are to a base station, the lower the power output of the device. This mobile phone can be used in positions other than against your ear. This mobile phone satisfies the international guidelines when used with a carrying case or a wearable accessory approved by NTT DOCOMO, INC. (\*2). In case you are not using the approved accessory, please use a product that does not contain any metals, and one that positions the mobile phone at least 1.5 cm away from your body.

The World Health Organization has stated that “a large number of studies have been performed over the last two decades to assess whether mobile phones pose a potential health risk. To date, no adverse health effects have been established as being caused by mobile phone use.”

Please refer to the WHO website if you would like more detailed information.

[http://www.who.int/docstore/peh-emf/publications/facts\\_press/fact\\_english.htm](http://www.who.int/docstore/peh-emf/publications/facts_press/fact_english.htm)

Please refer to the websites listed below if you would like more detailed information regarding SAR.

---

Ministry of Internal Affairs and Communications  
Website:

<http://www.tele.soumu.go.jp/e/sys/ele/index.htm>

Association of Radio Industries and Businesses  
Website:

<http://www.arib-emf.org/index02.html> (in Japanese only)

NTT DOCOMO, INC. Website:

<http://www.nttdocomo.co.jp/english/product/sar/>

SHARP Corporation Website:

<http://www.sharp.co.jp/products/menu/phone/cellular/sar/index.html>

(in Japanese only)

\*1 Technical regulations are defined by the Ministerial Ordinance Related to Radio Law (Article 14-2 of Radio Equipment Regulations).

\*2 Regarding the method of measuring SAR when using mobile phones in positions other than against the ear, international standards (IEC62209-2) were set in March of 2010. On the other hand, technical regulation is currently being deliberated on by national council (As of January, 2012).

---

---

## European RF Exposure Information

Your mobile device is a radio transmitter and receiver. It is designed not to exceed the limits for exposure to radio waves recommended by international guidelines. These guidelines were developed by the independent scientific organization ICNIRP and include safety margins designed to assure the protection of all persons, regardless of age and health.

The guidelines use a unit of measurement known as the Specific Absorption Rate, or SAR. The SAR limit for mobile devices is 2 W/kg and the highest SAR value for this device when tested at the ear was 0.704W/kg✕. As SAR is measured utilizing the devices highest transmitting power the actual SAR of this device while operating is typically below that indicated above. This is due to automatic changes to the power level of the device to ensure it only uses the minimum level required to reach the network.

The World Health Organization has stated that present scientific information does not indicate the need for any special precautions for the use of mobile devices. They note that if you want to reduce your exposure then you can do so by limiting the length of calls or using a hands-free device to keep the mobile phone away from the head.

---

\* The tests are carried out in accordance with international guidelines for testing.

### Declaration of Conformity

This declaration relates to the handset only.

**CE 0168** 

In some countries/regions, such as France, there are restrictions on the use of Wi-Fi. If you intend to use Wi-Fi on the handset abroad, check the local laws and regulations beforehand.

**Hereby, Sharp Telecommunications of Europe Ltd, declares that this SH-05D is in compliance with the essential requirements and other relevant provisions of Directive 1999/5/EC. A copy of the original declaration of conformity can be found at the following Internet address: <http://www.sharp.co.jp/k-tai/> (in Japanese only)**

### FCC Notice

- This device complies with part 15 of the FCC Rules. Operation is subject to the following two conditions: (1) This device may not cause harmful interference, and (2) this device must accept any interference received, including interference that may cause undesired operation.
- Changes or modifications not expressly approved by the manufacturer responsible for compliance could void the user's authority to operate the equipment.

### Information to User

This equipment has been tested and found to comply with the limits of a Class B digital device, pursuant to Part 15 of the FCC Rules. These limits are designed to provide reasonable protection against harmful interference in a residential installation. This equipment generates, uses and can radiate radio frequency energy and, if not installed and used in accordance with the instructions, may cause harmful interference to radio communications.

However, there is no guarantee that interference will not occur in a particular installation; if this equipment does cause harmful interference to radio or television reception, which can be determined by turning the equipment off and on, the user is encouraged to try to correct the interference by one or more of the following measures:



1. Reorient/relocate the receiving antenna.
2. Increase the separation between the equipment and receiver.
3. Connect the equipment into an outlet on a circuit different from that to which the receiver is connected.
4. Consult the dealer or an experienced radio/TV technician for help.

### FCC RF Exposure Information

Your handset is a radio transmitter and receiver. It is designed and manufactured not to exceed the emission limits for exposure to radio frequency (RF) energy set by the Federal Communications Commission of the U.S. Government.

The guidelines are based on standards that were developed by independent scientific organizations through periodic and thorough evaluation of scientific studies. The standards include a substantial safety margin designed to assure the safety of all persons, regardless of age and health.

The exposure standard for wireless handsets employs a unit of measurement known as the Specific Absorption Rate, or SAR. The SAR limit set by the FCC is 1.6 W/kg.

The tests are performed in positions and locations (e.g., at the ear and worn on the body) as required by the FCC for each model. The highest SAR value for this model handset when tested for use at the ear is 1.01 W/kg and when worn on the body, as described in this user guide, is 0.662W/kg.

**Body-worn Operation;** This device was tested for typical body-worn operations with the back of the handset kept 1.5 cm from the body. To maintain compliance with FCC RF exposure requirements, use accessories that maintain a 1.5 cm separation distance between the user's body and the back of the handset. The use of beltclips, holsters and similar accessories should not contain metallic components in its assembly.

The use of accessories that do not satisfy these requirements may not comply with FCC RF exposure requirements, and should be avoided.

The FCC has granted an Equipment Authorization for this model handset with all reported SAR levels evaluated as in compliance with the FCC RF emission guidelines. SAR information on this model handset is on file with the FCC and can be found under the Display Grant section of <http://www.fcc.gov/oet/ea/fccid/> after searching on FCC ID APYHRO00167.

Additional information on Specific Absorption Rates (SAR) can be found on the Cellular Telecommunications & Internet Association (CTIA) Website at <http://www.ctia.org/>.

## Inquiries

### General inquiries

#### <docomo Information Center>

(Business hours: 9:00 a.m. to 8:00 p.m.)

 **0120-005-250 (toll free)**

※ Service available in: English, Portuguese, Chinese, Spanish, Korean.

※ Unavailable from part of IP phones.

(Business hours: 9:00 a.m. to 8:00 p.m. (open all year round))

From DOCOMO mobile phones

(In Japanese only)

 **(No prefix) 151 (toll free)**

※ Unavailable from land-line phones, etc.

From land-line phones

(In Japanese only)

 **0120-800-000 (toll free)**

※ Unavailable from part of IP phones.

● Please confirm the phone number before you dial.

## Repairs

(Business hours: 24 hours (open all year round))

From DOCOMO mobile phones

(In Japanese only)

**F (No prefix) 113 (toll free)**

※ Unavailable from land-line phones, etc.

From land-line phones

(In Japanese only)

**☎ 0120-800-000 (toll free)**

※ Unavailable from part of IP phones.

- Please confirm the phone number before you dial.
- For Applications or Repairs and After-Sales Service, please contact the above-mentioned information center or the docomo Shop etc. near you on the NTT DOCOMO website or the i-mode site.

NTT DOCOMO website:

<http://www.nttdocomo.co.jp/english/>

i-mode site: iMenu ▶ お客様サポート (user support) ▶ ドコモショップ (docomo Shop) (In Japanese only)

## Loss or theft of FOMA terminal or payment of cumulative cost overseas <docomo Information Center>

(available 24 hours a day)

From DOCOMO mobile phones

International call access code for the country you stay -81-3-6832-6600\* (toll free)

- \* You are charged a call fee to Japan when calling from a land-line phone, etc.
- ※ If you use SH-05D, you should dial the number +81-3-6832-6600 (to enter "+", press the "0" key for at least 1 second).

From land-line phones

<Universal number>

Universal number international prefix -8000120-0151\*

- \* You might be charged a domestic call fee according to the call rate for the country you stay.
- ※ For international call access codes for major countries and universal number international prefix, refer to DOCOMO International Services website.

## Failures encountered overseas <Network Support and Operation Center>

(available 24 hours a day)

From DOCOMO mobile phones

International call access code for the country you stay -81-3-6718-1414\* (toll free)

- \* You are charged a call fee to Japan when calling from a land-line phone, etc.
- ※ If you use SH-05D, you should dial the number +81-3-6718-1414 (to enter "+", press the "0" key for at least 1 second).

From land-line phones

<Universal number>

Universal number international prefix -8005931-8600\*

- \* You might be charged a domestic call fee according to the call rate for the country you stay.
- ※ For international call access codes for major countries and universal number international prefix, refer to DOCOMO International Services website.
- If you lose your FOMA terminal or have it stolen, immediately take the steps necessary for suspending the use of the FOMA terminal.
- If the FOMA terminal you purchased is damaged, bring your FOMA terminal to a repair counter specified by DOCOMO after returning to Japan.

# Quick Manual

## CAUTION

---

**Use only the battery packs and adapters specified by NTT DOCOMO for use with the FOMA terminal.**

May cause fires, burns, bodily injury or electric shock.

---

**Do not throw the battery pack into a fire.**

The battery pack may catch fire, explode, overheat or leak.

---

**Do not dispose of used battery packs in ordinary garbage.**

May cause fires or damage to the environment. Place tape over the terminals to insulate unnecessary battery packs, and take them to a docomo Shop, retailer or institution that handles used batteries in your area.

---

**Avoid using the handset in extremely high or low temperatures.**

Use the FOMA terminal within the range of a temperature between 5°C and 40°C (for temperatures of 36°C or higher, such as in a room with a bath, limit usage to a short period of time) and a humidity between 45% and 85%.

---

**Charge battery in areas where ambient temperature is between 5°C and 35°C.**







## Precautions (Always follow these directions)

- Before use, read these “Precautions” carefully and use your FOMA terminal properly.  
Keep this manual in a safe place for future reference.
- These precautions contain information intended to prevent bodily injury to the user and to surrounding people, as well as damage to property, and must be observed at all times.

**The following symbols indicate the different degrees of injury or damage that may occur if information provided is not observed and the FOMA terminal is used improperly.**

 <b>Danger</b>	This symbol indicates that “death or serious bodily injury may directly and immediately result from improper use”.
 <b>Warning</b>	This symbol indicates that “death or serious bodily injury may result from improper use”.
 <b>Caution</b>	This symbol indicates that “minor injury and/or property damage may result from improper use”.

The following symbols indicate specific directions.


	<b>Indicates a prohibited action.</b> Don't
	Indicates not to disassemble the device. No disassembly
	Indicates not to handle the device with wet hands. No wet hands
	Indicates not to use the device near water or get it wet. No liquids
	<b>Indicates that instructions specified are compulsory (must be followed).</b> Instruction
	Indicates that the power cord must be unplugged from the outlet. Unplug

**“Precautions” is explained in the following six sections.**


- Handling the FOMA terminal, battery pack, adapters, wireless charger, and docomo mini UIM card (general) . . . . . P. 7
- Handling the FOMA terminal . . . . . P. 9
- Handling battery pack . . . . . P. 11
- Handling adapters and wireless charger . . . . . P. 12
- Handling docomo mini UIM card. . . . . P. 13
- Handling near electronic medical equipment . . . . . P. 14

## Handling the FOMA terminal, battery pack, adapters, wireless charger, and docomo mini UIM card (general)




 **Do not use, store or leave the equipment in locations subject to high temperatures (near a fire or heating unit, in a kotatsu, under direct sunlight, inside a vehicle on a hot day, etc.).**

May cause fires, burns or bodily injury.

 **Do not place the equipment inside cooking appliances such as microwave ovens or pressure cookers.**

May cause fires, burns, bodily injury or electric shock.

 **Do not attempt to disassemble or modify the equipment.**

No disassembly

May cause fires, burns, bodily injury or electric shock.


 **Do not get the equipment wet with water, drinking water, pet urine, etc.**

No liquids

May cause fires, burns, bodily injury or electric shock.

Refer to the following for details on waterproofness.

 “Waterproof/Dust-proof function” on P. 22

 **Use only the battery packs and adapters specified by NTT DOCOMO for use with the FOMA terminal.**

May cause fires, burns, bodily injury or electric shock.



## Warning



**Do not subject the equipment to strong force or impacts or throw it.**

Don't

May cause fires, burns, bodily injury or electric shock.



**Do not allow conductive materials (such as metal objects and pencil lead) to come into contact with the charger terminal or external connector terminal. In addition, do not insert such objects.**

Don't

May cause fires, burns, bodily injury or electric shock.



**Do not cover or wrap the equipment with bedding, etc. when using or charging.**

Don't

May cause fires or burns.



**Do not use the FOMA terminal near high-precision electronic devices or devices that use weak electronic signals.**

Don't

May interfere with the operation of electronic devices.

### **Take particular care with the following devices**

Hearing aids, implanted cardiac pacemakers, implanted cardioverter-defibrillators or other electronic medical equipment. Fire alarms, automatic doors, and other equipment controlled by electronic signals. If you use an implanted cardiac pacemaker, implanted cardioverter-defibrillator or other electronic medical equipment, contact the respective manufacturer or vendor to check whether the operation of the equipment is affected by signals.



**Make sure to turn off the FOMA terminal and not to charge the battery in locations such as gas stations where flammable gas is generated.**

Instruction

May cause a gas explosion or fire.



Instruction

**If you notice anything unusual, such as an unusual odor, overheating, discoloration or deformation during use, charging or storage, immediately follow the instructions below.**

- **Unplug the power cord from the outlet or cigarette lighter socket.**
- **Turn off the FOMA terminal.**
- **Remove the battery pack from the FOMA terminal.**

May cause fires, burns, bodily injury or electric shock.



## Caution



Don't

**Do not leave the equipment on unstable surfaces, such as on a wobbling table or sloped surface.**

May fall and cause injury.



Don't

**Do not store the equipment in locations that are subject to humidity, dust or high temperatures.**

May cause fires, burns or electric shock.



Instruction

**If being used by a child, have a guardian teach him/her the proper handling procedures. In addition, check that the child is using the equipment as directed.**

May result in bodily injury.



Instruction

**Keep the equipment out of the reach of young children.**

A young child may swallow the equipment or suffer other bodily injury.



**Be very careful when using the FOMA terminal connected to adapters repeatedly or for a long time.**

Instruction

The FOMA terminal, battery pack or adapters may become warm if i-αpli, videophone or 1Seg is used for a long time while charging. Touching high temperature areas for a long time may cause skin irritations, itchiness or low-temperature burn in some people.

## Handling the FOMA terminal



### Warning



**Do not aim the infrared port towards the eyes.**

Don't

May cause eye injury.



**Do not aim the infrared port towards home electric appliances with an infrared device during Ir communication.**

Don't

May interfere with the operation of infrared devices and cause an accident.



**Do not allow water or other liquids, metal, flammable material or other foreign objects to enter the docomo mini UIM card or microSD Card slot on the FOMA terminal.**

Don't

May cause fires, burns, bodily injury or electric shock.



**Turn off the FOMA terminal in areas where the use of mobile phones is prohibited, such as in aircraft or hospitals.**

Instruction

May interfere with the operation of electronic devices and electronic medical equipment.

In addition, if auto power on function is set to on, disable this function before turning off your mobile phone.

Follow the instructions given by the respective medical facilities regarding the use of mobile phones on their premises.

Actions such as using a mobile phone aboard aircraft are prohibited and punishable by law.

However, follow the instructions on use of the FOMA terminal given by the airline if the mobile phone can be used aboard aircraft by setting the mobile phone such as setting it not to emit radio wave.



**Keep the FOMA terminal away from the ears during a call in which hands-free is set or while the ring tone is ringing.**

Instruction

**When you attach the earphone/microphone, etc. to the FOMA terminal to play games, music, etc., do not make the volume too loud.**

Excessive high volume may damage your hearing. Also, it may prevent you from hearing the ambient sounds and cause an accident.

### Earphone Signal Level

The maximum output voltage for the music player function, measured in accordance with EN 50332-2, is 34.0 mV.



**If you have a weak heart, take extra precautions when setting functions such as the vibrator and ring tone volume for incoming calls.**

Instruction

May have harmful effects on your heart.



Instruction

**If you are using electronic medical equipment, contact the respective manufacturer or vendor to check whether the operation of the equipment is affected by signals.**

May interfere with the operation of electronic medical equipment, etc.



Instruction

**In case that the display part or camera lens is damaged, make sure to pay attention to a broken glass and the exposed inside of the FOMA terminal.**

The surfaces of the display part and the camera lens are covered by plastic panels so as to minimize the possibility of glass scattering. However, touching the broken or exposed parts may cause injury.



## Caution



Don't

**Do not swing the FOMA terminal by its strap etc.**

May hit you or others around you, resulting in bodily injury.



Don't

**Do not use the damaged FOMA terminal.**

May cause fires, burns, bodily injury or electric shock.



Don't

**If the display is broken and internal substances such as liquid crystal then leaks, do not get the liquid on your skin (face, hands, etc.).**

May result in loss of eyesight and harm to your skin. If internal substances such as liquid crystal come into contact with your eyes or mouth, immediately rinse your eyes or mouth with clean water and see a doctor. If the liquid comes into contact with your skin or clothes, immediately wipe it off with alcohol, and wash with water and soap.



Instruction


**If you use the FOMA terminal in an automobile, contact the automobile manufacturer or vendor to check whether the operation of the electronic equipment is affected by signals.**

May interfere with the operation of electronic equipment in some vehicle models. In such cases, stop using the FOMA terminal.



Instruction

**Use of the FOMA terminal may cause skin irritations such as itchiness, rashes or eczema in some people. If this occurs, immediately stop using the FOMA terminal and seek medical treatment.**

For details on materials of each part  "Material list" on P. 14



Instruction

**Do not close the FOMA terminal on your fingers or objects such as the strap.**

May result in bodily injury.



Instruction

**Look at the display in a well-lit place, keeping a certain distance from the screen.**

Otherwise, eyesight may be decreased.



## Handling battery pack

Check the type of battery using the information printed on the battery pack label.

Label	Battery type
Li-ion00	Lithium-ion

### Danger



Don't

**Do not touch terminals with metallic objects such as wires. In addition, do not carry or store the battery pack with metallic necklaces, etc.**

The battery pack may catch fire, explode, overheat or leak.



Don't

**Check that the battery pack is facing the correct direction before you attach it to the FOMA terminal. If you are having difficulty fitting the battery pack to the FOMA terminal, do not use excessive pressure to force the battery into place.**

The battery pack may catch fire, explode, overheat or leak.



Don't

**Do not throw the battery pack into a fire.**

The battery pack may catch fire, explode, overheat or leak.



Don't

**Do not puncture, hit with a hammer or step on the battery pack.**

The battery pack may catch fire, explode, overheat or leak.



Instruction

**If the battery fluid, etc. comes into contact with your eyes, do not rub your eyes but immediately rinse your eyes with clean water. Then seek prompt medical treatment.**

May result in loss of eyesight.

### Warning



Don't

**If any trouble such as a deformation or scratches caused by a drop is found, never use it.**

The battery pack may catch fire, explode, overheat or leak.



Instruction

**If the battery pack leaks, emits an unusual odor, etc., immediately stop use and move it away from any flame or fire.**

The battery fluid is flammable and could ignite, causing a fire or explosion.



Instruction

**Prevent your pet from biting the battery pack.**

The battery pack may catch fire, explode, overheat or leak.

### Caution



Don't

**Do not dispose of used battery packs in ordinary garbage.**

May cause fires or damage to the environment. Place tape over the terminals to insulate unnecessary battery packs, and take them to a docomo Shop, retailer or institution that handles used batteries in your area.



**Do not use or charge a wet battery pack.**

Don't

The battery pack may catch fire, explode, overheat or leak.



**If the battery fluid, etc. leaks, do not get the liquid on your skin (face, hands, etc.).**

Instruction

May result in loss of eyesight and harm to your skin.

If the liquid, etc. comes into contact with your eyes, mouth, skin or clothes, immediately rinse them with clean water.

If the liquid comes into contact with your eyes or mouth, see a doctor immediately after rinsing your eyes or mouth.

## Handling adapters and wireless charger



## Warning



**Do not use if the cord of the adapter or of the wireless charger is damaged.**

Don't

May cause fires, burns or electric shock.



**Never use the AC adapter or the wireless charger in humid locations such as a bathroom.**

Don't

May cause fires, burns or electric shock.



**The DC adapter should only be used in negative grounded vehicles. Never use this adapter in positive grounded vehicles.**

Don't

May cause fires, burns or electric shock.



**Do not touch adapters or the wireless charger if you hear thunder.**

Don't

May cause electric shock.



**Take care not to short-circuit the charging terminal when it is connected to an outlet or cigarette lighter socket. Also, take care not to allow any part of your body (hands, fingers, etc.) to come into contact with the charging terminal.**

Don't

May cause fires, burns or electric shock.



**Do not place heavy objects on the cord of the adapter or of the wireless charger.**

Don't

May cause fires, burns or electric shock.



**When plugging/unplugging the AC adapter into/from the outlet, do not allow metallic straps or other metallic objects to come into contact with the terminal.**

Don't

May cause fires, burns or electric shock.



**Do not place foreign objects between the wireless charger and the FOMA terminal.**

Don't

May cause overheat or burns or catch fire.



**Do not paste stickers such as aluminium or metallic objects on the wireless charger.**

Don't

May cause overheat or burns or catch fire.



**Do not connect the voltage converter for overseas travel (Travel converter) to the wireless charger.**

Don't

May cause overheat or electric shock or catch fire.



No wet hands

May cause fires, burns or electric shock.

**Do not handle the cord of the adapters, the wireless charger or the outlet with wet hands.**



No liquids

May cause fires, burns, bodily injury or electric shock.

**Do not charge any parts wet with water with the wireless charger.**



Instruction

Using the incorrect voltage may cause fire, burns or electric shock.

AC adapter: 100V AC

DC adapter: 12/24V DC (for negative grounded vehicles only)

AC adapter available overseas: 100 to 240V AC (Connect only with household AC outlet)

**Always use the specified power supply and voltage. When using overseas, use the AC adapter that is available overseas.**



Instruction

May cause fires, burns or electric shock. Refer to the respective manuals for information on the correct fuse specifications.

**If the fuse in the DC adapter blows, always replace it with a fuse of the specified type.**



Instruction

May cause fires, burns or electric shock.

**Wipe off any dust on the power plug.**



Instruction

May cause fires, burns or electric shock.

**Fully plug the AC adapter or the power plug into the outlet.**



Instruction

May cause fires, burns or electric shock.

**Always grasp the adapters when unplugging the power plug from the outlet or cigarette lighter socket. Do not forcibly pull by the cord of the adapter or of the wireless charger.**



Instruction

Electromagnetic signals may have harmful effects on the operation of implanted cardiac pacemakers and implanted cardioverter-defibrillators.

**If you have an implanted cardiac pacemaker or an implanted cardioverter-defibrillator, consult a doctor about the use of the wireless charger.**



Unplug

May cause fires, burns or electric shock.

**Unplug the power plug from the outlet or cigarette lighter socket when not using for a long time.**



Unplug

May cause fires, burns or electric shock.

**Should water or other liquids enter the equipment, remove the power plug from the outlet or cigarette lighter socket immediately.**



Unplug

May cause fires, burns or electric shock.

**Always unplug the power plug from the outlet or cigarette lighter socket before cleaning the adapters.**

## Handling docomo mini UIM card



## Caution



Instruction

May cause bodily injury.

**Be careful with the cutting surface when detaching the docomo mini UIM card.**

## Handling near electronic medical equipment

The precautions detailed here conform to the guidelines drawn up by the Electromagnetic Compatibility Conference Japan, regarding the protection of electronic medical equipment from signals emitted by mobile phones.



## Warning



**Observe the following in hospitals or other medical facilities.**

Instruction

- Do not take your FOMA terminal into operating rooms, ICUs (Intensive Care Units) or CCUs (Coronary Care Units).
- Turn off your FOMA terminal inside hospital wards.
- Turn off your FOMA terminal even when you are in an area outside hospital wards, such as a hospital lobby, since electronic medical equipment may be in use nearby.
- Where a medical facility has specific instructions prohibiting the carrying and use of mobile phones, observe those instructions strictly.
- If auto power on function is set to on, disable this function before turning off your mobile phone.



Instruction

**Turn off your FOMA terminal in crowded places such as rush-hour trains in case somebody nearby is using an implanted cardiac pacemaker or implanted cardioverter-defibrillator.**

Electromagnetic signals may have harmful effects on the operation of implanted cardiac pacemakers and implanted cardioverter-defibrillators.



Instruction

**If you have electric medical equipments such as an implanted cardiac pacemaker or an implanted cardioverter-defibrillator, always carry or use your FOMA terminal at least 22 cm away from your implant.**

Electromagnetic signals may have harmful effects on the operation of the electric medical equipments.



Instruction

**Patients receiving medical treatment away from a hospital or medical facility (e.g. home treatment) who are using electronic medical equipment other than implanted cardiac pacemakers or implanted cardioverter-defibrillators should consult the respective manufacturers for information regarding the effects of signals on the equipment.**

Electromagnetic signals may have harmful effects on the operation of electronic medical equipment.

## Options and related devices

**Combine the FOMA terminal with various optional accessories (sold separately) for expanded personal and business use. Some products may not be available in certain areas. Contact a docomo Shop or retailer for details.**

**Refer to the user's guide of each product for more details on optional parts.**

- FOMA AC Adapter 01<sup>\*1</sup>/02<sup>\*1</sup>
- Battery Pack SH34
- Back Cover SH60
- Earphone Terminal P001<sup>\*2</sup>
- Flat-plug Stereo Earphone Set P01<sup>\*3</sup>
- Flat-plug Earphone/Microphone with Switch P01<sup>\*3</sup>/P02<sup>\*3</sup>
- Stereo Earphone Set P001<sup>\*2</sup>
- Earphone/Microphone with Switch P001<sup>\*2</sup>/P002<sup>\*2</sup>
- Earphone/Microphone 01
- Stereo Earphone Set 01
- Earphone Plug Adapter P001<sup>\*3</sup>
- Earphone Plug Adapter for External connector terminal 01
- Earphone Plug Adapter 01
- FOMA USB Cable<sup>\*4</sup>
- Wireless Earphone Set 02
- FOMA AC Adapter 01 for Global use<sup>\*1</sup>
- FOMA DC Adapter 01/02
- FOMA Indoor Booster Antenna<sup>\*5</sup>
- In-Car Hands-Free Kit 01<sup>\*6</sup>
- FOMA In-Car Hands-Free Cable 01
- In-Car Holder 01
- FOMA Dry Battery Adapter 01
- Carry Case S 01

- Carry Case 02
- Bone conduction microphone/receiver 01<sup>\*3/02</sup>
- FOMA USB Cable with Charge Function 02<sup>\*4</sup>
- FOMA Portable Charging Adapter 01/02/03
- FOMA Indoor Booster Antenna (Stand Type)<sup>\*5</sup>

- Wireless Charger SH01<sup>\*5</sup>
- Wireless Charger 01<sup>\*5</sup>

\*1 Refer to 1.51 for details on charging with an AC adapter.

\*2 Earphone Plug Adapter for External connector terminal 01 and Earphone Plug Adapter are required.

\*3 Earphone Plug Adapter for External connector terminal 01 is required.

\*4 The use of USB HUB may prevent working correctly.

\*5 For use only in Japan.

\*6 FOMA USB Cable with Charge Function 01 is required to charge SH-05D.