

Draft

# AQUOS Xx3 minii

INSTRUCTION MANUAL '16.●

# Package Contents

---

↓ [Package Contents](#)

---

## Package Contents

- Handset (AQUOS Xx3 mini)
  - Battery is built into handset.
  - Handset back cover is not removable.
- Warranty

# Charging Handset

---

Battery is built into handset.

↓ [Internal Battery](#)

↓ [About Charging](#)

↓ [AC Charger](#)

↓ [Charging by PC](#)

## Internal Battery

A lithium-ion battery is built into handset; it is not removable.



### Recycling

This product requires a lithium-ion battery. Lithium-ion batteries are recyclable. To recycle a used lithium-ion battery, take it to any shop displaying the recycling symbol.



**Li-ion00**



**モバイル・リサイクル・ネットワーク**

携帯電話・PHSのリサイクルにご協力を。



### Battery Cautions

#### Battery Care

To help maintain performance and life of Internal Battery, do not store in the following conditions (battery level should be at approximately 40% for optimal storage).

- Full (immediately after charging is complete)
- Exhausted (too low to power on handset)

### **Bulges of Internal Battery**

Depending on usage, bulges may appear near end of battery life; this does not affect safety.

### **Internal Battery Replacement**

Internal Battery is a consumable item; may need to be replaced if operating time shortens noticeably. Internal Battery is not user replaceable; its replacement incurs fees and requires handset submission to a SoftBank Shop or other appropriate servicer. For details, contact a SoftBank Shop or SoftBank Customer Support, [General Information](#).

## **About Charging**

The following charging options are available.

<b>Charging Option</b>	<b>Description</b>
<b>AC Charger</b>	Connect handset and AC Charger (optional accessory) directly.
<b>USB charging</b>	Connect handset and a PC with Micro USB Cable (optional accessory).



### **Charging/Notification Lamp**

Charging/Notification Lamp illuminates red while charging; illuminates green when charge is almost full.

Charging/Notification Lamp goes out when charge is full.

- If Charging/Notification Lamp is blinking, charging is not working properly. Make sure that you are using Charger and products specified by SoftBank Corp. If you are using specified products only, contact a SoftBank Shop or SoftBank Customer Support, [General Information](#).



### **Charging Cautions**

#### **Water Resistance**

AC Charger (optional accessory) and Micro USB Cable (optional accessory) are not waterproof. Never connect Micro USB plug while handset or Charger is wet.

Handset is water resistant; however, if Micro USB plug is inserted while it is wet, liquid (tap water, beverage, sea water, pet urine, etc.) or a foreign object adhered to handset or Micro USB plug may cause overheating, burnout, fire, malfunction, burns, etc. due to electric shock, short-circuiting, etc.

#### **Handling Cables**

Do not pull, bend, or twist cable; may damage the cable.

## About Charging Abroad

SoftBank Corp. is not liable for problems resulting from charging handset abroad.

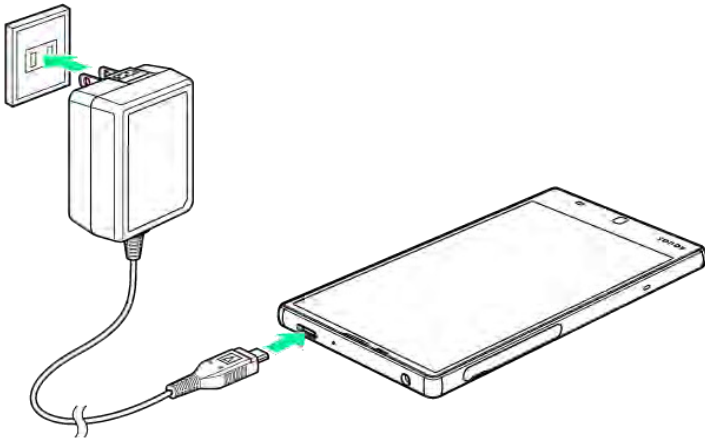
## AC Charger

AC Charger is an optional accessory. Be sure to use SB-AC12-HDQC (SoftBank SELECTION Qualcomm® Quick Charge™ 2.0 AC Adaptor for smartphones) or SB-AC13-HDMU (Micro USB, 1.0 A) specified by SoftBank Corp.

For information on other peripheral devices, see SoftBank Website.

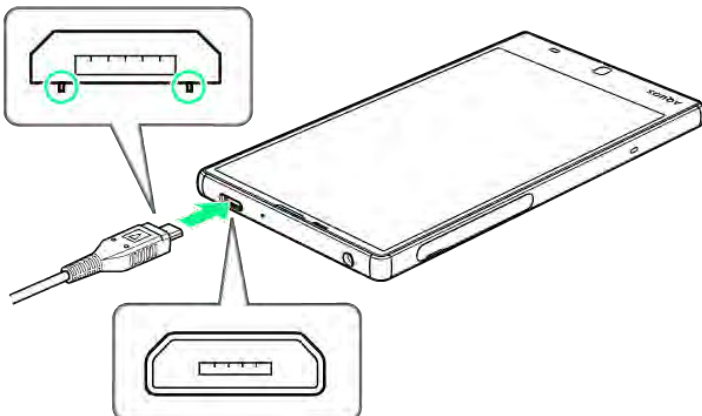
The following explains how to charge handset using SB-AC12-HDQC (SoftBank SELECTION Qualcomm® Quick Charge™ 2.0 AC Adaptor for smartphones).

- See User Guide for corresponding AC Charger.
- Never connect Micro USB plug while handset or AC Charger is wet.



1

Insert Micro USB plug of AC Charger into External Device Port



- Insert Micro USB plug in correct orientation; otherwise, External Device Port may be damaged. Check contours and orientation of Micro USB plug, then insert it with tabs (O) facing down.

2

---

Extend blades and plug AC Charger into AC outlet

 Charging starts and Charging/Notification Lamp illuminates.

- Charging/Notification Lamp goes out when charge is full.

3

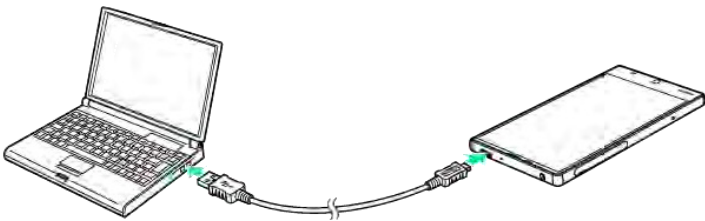
---

After charging, remove Micro USB plug from External Device Port, then unplug AC Charger and retract blades

## Charging by PC

Connect handset to a PC with Micro USB Cable (SHDDL1; optional accessory).

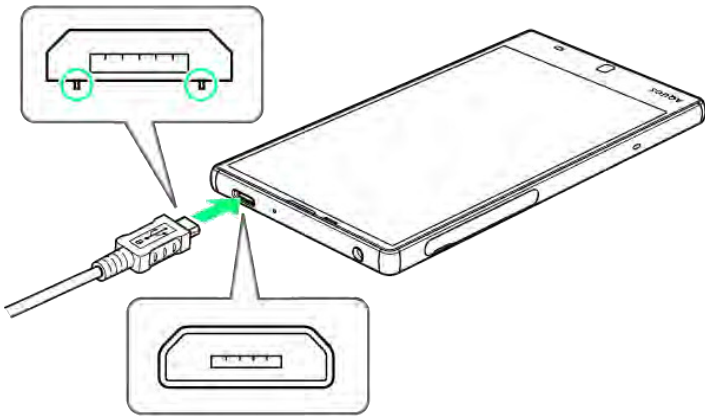
- Make sure that PC is turned on.
- Charging may not be possible/take a long time depending on connection and PC conditions.
- Never connect Micro USB plug while handset or Micro USB Cable is wet.



1

---

Insert Micro USB plug of Micro USB Cable into External Device Port

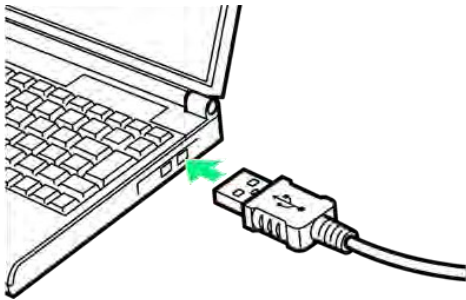


- Insert Micro USB plug in correct orientation; otherwise, External Device Port may be damaged. Check contours and orientation of Micro USB plug, then insert it with tabs (O) facing down.

## 2

---

Insert USB plug of Micro USB Cable into PC USB port



 Charging starts and Charging/Notification Lamp illuminates.

- Charging/Notification Lamp goes out when charge is full.

## 3

---

After charging, remove Micro USB Cable from handset and PC

# Specifications

↓ Handset

↓ TV Antenna Cable

↓ Materials

## Handset

Handset specifications are as follows.

- Times in the table vary with location, status, settings, etc.
- Display employs precision technology; however, some pixels may remain on/off.

Item	Description
<b>Dimensions (W x H x D)</b>	Approx. * * mm x * * * mm x * . * mm (without protruding parts)
<b>Weight</b>	Approx. * * * g
<b>Maximum Output</b>	3G: 0.25 W GSM (850 MHz, 900 MHz): 2 W GSM (1800 MHz, 1900 MHz): 1 W 4G: 0.2 W
<b>Internal Battery Capacity</b>	2,400 mAh
<b>Continuous Talk Time<sup>1</sup></b>	3G: Approx. * * * minutes GSM: Approx. * * * minutes VoLTE: Approx. * * * minutes
<b>Continuous Standby Time<sup>2</sup></b>	3G: Approx. * * * hours GSM: Approx. * * * hours 4G (AXGP Network): Approx. * * * hours 4G (FDD-LTE Network): Approx. * * * hours
<b>Full Seg/One Seg Continuous Viewing Time<sup>3</sup></b>	Full Seg: Approx. * * hours One Seg: Approx. * * hours
<b>Charging Time<sup>4</sup></b>	AC Charger (SB-AC12-HDQC) <sup>5</sup> : Approx. * * * minutes AC Charger (SB-AC13-HDMU; Micro USB, 1.0 A): Approx. * * * minutes
<b>Maximum Transmission Speed<sup>6</sup></b>	SoftBank 4G: 165 Mbps in downlink, 10 Mbps in uplink SoftBank 4G LTE: 187.5 Mbps <sup>7</sup> in downlink, 37.5



## Mbps in uplink

- 1 Average measured with handset fully charged, in strong signal conditions at rest.
- 2 Average measured with handset fully charged, without calls or operations, in strong signal conditions at rest, and with data communication and Urgent News disabled. May vary with battery strength, ambient temperature, settings, etc.
- 3 Calculated in full-screen landscape mode, with Brightness level set to medium, with Earphones with Mic (optional accessory), and volume at maximum, starting from handset fully-charged and continuing until 10% remaining battery charge.  
Usable time may vary with radio signal conditions and the content played.
- 4 Measured with power off using AC Charger.
- 5 SB-AC12-HDQC (SoftBank SELECTION Qualcomm® Quick Charge™ 2.0 AC Adaptor for smartphones)
- 6 Provided on a best-effort basis; transmission speed may decrease or transmission may become unavailable due to traffic conditions, network environment, etc. In addition, transmission speed varies by area.
- 7 Scheduled to be available on an area-by-area basis. Depending on area, maximum downlink speed is set to 150 Mbps, 112.5 Mbps, 75 Mbps, or 37.5 Mbps or less.

## Materials

Parts	Materials Used/Surface Finish
Display	Tempered glass
Shatterproof Film	Polyester/AF coating
Periphery of Display	Aluminum/anodizing
Cabinet (metal part)	Aluminum/anodizing
Cabinet (resin part) for Black	PC resin/coating, UV top coating
Cabinet (resin part) for Purple and White	PC resin/indium deposition, UV top coating

<b>Grip Sensor</b>	Acrylic/hard coating
<b>Back Surface</b>	Tempered glass/AF coating
<b>Periphery of Back Surface</b>	PA resin + GF/UV top coating
<b>Power Key</b>	Aluminum/anodizing
<b>Volume Up/Down Key</b>	Aluminum/anodizing
<b>Earphones-Microphone Port Ornament</b>	PC resin
<b>Receiver Screen</b>	SUS/electrophoretic coating
<b>Camera Window</b>	Tempered glass/AF coating
<b>Camera Ornament</b>	Aluminum/anodizing
<b>Fingerprint Sensor</b>	Polyimide/UV top coating
<b>Fingerprint Sensor Ornament</b>	Aluminum/anodizing
<b>Card Slot Cover</b>	PC resin + TPU/UV top coating
<b>Card Slot Cover Gasket</b>	Silicone + SUS
<b>USIM Tray</b>	POM resin
<b>IMEI Tray</b>	PET
<b>Speaker Screen</b>	Nylon resin/water-repellent treatment
<b>External Device Port</b>	SUS/tin plating

# Warranty & After-Sales Service

---

↓ [Warranty](#)

↓ [After-Sales Service](#)

---

## Warranty

Handset purchase includes warranty.

- Check shop name and purchase date.
- Read warranty and keep in a safe place.
- Warranty period is given in warranty.

### **Cautions**

#### **Damages**

SoftBank Corp. is not responsible for any damages for user or third party resulting from lost opportunities to make a call, etc. due to breakage, malfunction, or trouble of product.

#### **Malfunction/Repairs**

Information/settings on handset may be lost/changed due to malfunction or repairs. It is recommended that you keep a copy of Address Book contacts and other important information. SoftBank Corp. is not responsible for loss/change of data (contacts, images, sound, etc.) or settings due to malfunction, repairs, change of model, or any other handling.

#### **Disassembly/Modification**

Disassembly/modification of handset is prohibited under the Radio Law. Note that handset cannot be accepted for repairs if modified.

Adhering stickers, etc. on Display or Keys or adhering decorations with glue, etc. may be deemed to be modifications, and prevent acceptance of handset for repairs.

## After-Sales Service

To request repairs, contact [Customer Service](#) or a nearby SoftBank Shop. Have details of symptoms ready.

- During the warranty period, repairs are made under the terms and conditions of the warranty.

- After the warranty period, if handset can be repaired, repairs will be made at cost.



### **Further inquiries**

For more information on after-sales service, contact a nearby SoftBank Shop or [Customer Service](#).

# Customer Service

---

For SoftBank handset or service information, call General Information. For repairs, call Customer Assistance.

---

↓ [SoftBank Customer Support](#)

---

↓ [Smartphone Technical Support Center](#)

---

↓ [SoftBank Global Call Center](#)

---

## SoftBank Customer Support



### General Information

From a SoftBank handset, dial toll free at 157

From a landline/IP phone, dial toll free at 0800-919-0157



### Customer Assistance (Repairs/Lost Handsets)

From a SoftBank handset, dial toll free at 113

From a landline/IP phone, dial toll free at 0800-919-0113

If you cannot reach a toll free number, use the number (charges apply) below for your service area:

Hokkaido Area, Tohoku Area, Hokuriku Area, Kanto & Koshinetsu Area: 022-380-4380

Tokai Area: 052-388-2002

Kansai Area: 06-7669-0180

Chugoku Area, Shikoku Area, Kyushu & Okinawa Area: 092-687-0010

## Smartphone Technical Support Center

From a SoftBank handset, dial toll free at 151

From a landline/IP phone, dial toll free at 0800-1700-151

## SoftBank Global Call Center

From outside Japan, dial +81-92-687-0025 (toll free from SoftBank handsets)

If handset is lost/stolen, call this number immediately (international charges apply)

# Safety Precautions

Read Safety Precautions before using handset.

Observe precautions to avoid injury to self or others, or damage to property.

SoftBank Corp. is not liable for any damages resulting from use of this product.

↓ Safety Precautions

↓ Handset, USIM Card, TV Antenna Cable, Charger (Optional Accessory), Micro USB Cable (Optional Accessory), SD Card (Optional Accessory) (Common)

↓ Internal Battery

↓ Handset




↓ Charger (Optional Accessory)

↓ TV Antenna Cable




↓ Handset Use & Electronic Medical Equipment




## Safety Precautions

These labels show degree of risk from improper use; learn them before reading on:

Label	Description
 <b>DANGER</b>	Great risk of death or serious injury
 <b>WARNING</b>	Risk of death or serious injury
 <b>CAUTION</b>	Risk of minor injury or damage to property

These symbols signify prohibited/compulsory actions; learn them before reading on:

Symbol	Description
 Prohibited	Prohibited actions
 Do Not Disassemble	Disassembly prohibited
 Avoid Liquids Or Moisture	Exposure to liquids prohibited

 Do Not Use Wet Hands	Use with wet hands prohibited
 Compulsory	Compulsory actions
 Disconnect Power Source	Unplug from outlet

## Handset, USIM Card, TV Antenna Cable, Charger (Optional Accessory), Micro USB Cable (Optional Accessory), SD Card (Optional Accessory) (Common)

### **DANGER**



Compulsory

#### **Use specified Charger and Micro USB Cable only.**

Non-specified equipment use may cause Internal Battery to leak, overheat, burst or ignite, and may cause Charger to overheat, ignite, malfunction, etc.



Do Not  
Disassemble

#### **Do not disassemble, modify or solder handset or related hardware.**

May cause fire, injury, electric shock or malfunction. Internal Battery may leak, overheat, burst, ignite, etc.

Modifying handsets is prohibited by the Radio Law and subject to penalty.



Avoid Liquids  
Or Moisture

#### **Do not wet internal handset parts or Charger.**

If liquid (water, pet urine, etc.) enters handset, leaving wet or charging while wet may cause overheating, electric shock, fire, injury, malfunction, etc.

Use only as directed.



Prohibited

#### **Do not charge, use, or leave handset or related hardware in extreme heat (fire, heat sources, direct sunlight, inside vehicles in the hot sun, etc.).**

**Do not charge, leave, use, or be carrying handset or related hardware in a warm place or where**



**heat collects, such as under a kotatsu (blanketed warming table) or electric blanket, next to a kairo (worn warming patch), etc.**

May cause warping/malfunction; Internal Battery may leak, overheat, ignite or burst. Handset or related hardware may become hot to the touch, leading to burns or other problems.



Prohibited

**Do not force Charger into handset.**

**Check Micro USB plug orientation; retry.**

Internal Battery may leak, overheat, burst, ignite, etc. May damage or burn out External Device Port.



Prohibited

**When handset is connected to Charger, do not apply excessive force by stomping or in any other way.**

When Port or connector is damaged, charging may cause malfunction or fire. Charge as directed.



## WARNING



Prohibited

**Do not place handset or Charger in/on ovens, microwave ovens, pressure cookers, induction stoves or other cooking appliances.**

Internal Battery may leak, overheat, burst or ignite. Handset/Charger may overheat, emit smoke, ignite, malfunction, etc.



Compulsory

**Keep handset off and Charger disconnected near gas stations or places with fire/explosion risk.**

May ignite gas. Turn off any NFC (including Osaifu-Keitai<sup>®</sup>) compatible mobile phone when using gas station facilities (If NFC (including Osaifu-Keitai<sup>®</sup>) is locked, unlock before turning mobile phone off).



Prohibited

**Do not drop/throw or subject to strong impact.**

Internal Battery may leak, overheat, burst or ignite, resulting in fire, electric shock, malfunction, etc.



Compulsory

**If you notice unusual sound/odor, smoke or any other abnormality, follow these steps.**

1. Grasp plug and disconnect Charger.

Handset or related hardware may be hot to the touch; remove handset from Charger, being careful not to burn yourself.

2. Power off, being careful not to burn or injure yourself.

Use in an abnormal condition may cause fire, electric shock, etc.



Prohibited

**Keep External Device Port or Earphones-Microphone Port away from liquids (tap water, beverage, sea water, pet urine, etc.) and conductive materials (pencil lead, metal strip/jewelry, hairpin, etc.).**

**Also, do not let liquids or conductive materials enter External Device Port or Earphones-Microphone Port.**

May cause fire, burns, malfunction, etc. due to short-circuiting.

IPX is a standard for water/dust protection; however, compliance with this standard does not mean that short-circuiting due to adhesion of a foreign object or liquid can be prevented.

Handset water resistance does not provide protection from sea water, pool water, hot water, etc. When a foreign object or liquid adheres, remove it thoroughly before charging.



Prohibited

**Never connect Micro USB plug while handset or Charger is wet.**

Handset is water resistant; however, if Micro USB plug is inserted while it is wet, liquid (tap water, beverage, sea water, pet urine, etc.) or a foreign object adhered to handset or Micro USB plug may cause overheating, burnout, fire, malfunction, burns, etc. due to electric shock, short-circuiting, etc.



Prohibited

**Do not expose handset or related hardware to hot air from dryers or other sources to dry them or for other purposes. Avoid saunas or hot water.**

Internal Battery may leak, overheat, burst or ignite. Handset/Charger may overheat, emit smoke, ignite, malfunction, etc.



**CAUTION**



Prohibited

**Do not place handset or related hardware on unstable surfaces; take added care when vibration is set or while charging.**

Handset or related hardware may fall, resulting in injury, malfunction, etc. A fall while charging may cause damage to connector.



Prohibited

**When removing Charger from handset, hold by Micro USB plug and do not pull cord/cable.**  
Pulling plug by cord/cable may damage cord/cable or connector and cause fire, electric shock, etc.



Compulsory

**For any skin irritation associated with use, discontinue use and consult a doctor.**  
Metal and other materials may cause skin irritation, rashes, or itchiness depending on your physical condition.



Prohibited

**Do not touch handset or Charger for long periods during charging.**  
May cause low-temperature burns.



Compulsory

**Keep handset and related hardware away from infants and pets.**  
Infants and pets may choke from swallowing handset or related hardware or be injured, etc.



Compulsory

**For use of handset/related hardware by child, explain instructions and supervise use.**  
Misuse may cause injury or other problems.

## Internal Battery



Confirm battery type; use/dispose of Internal Battery accordingly.

Symbol on Label	Battery Type
Li-ion00	Lithium-ion



Prohibited

**Do not dispose of handset in fire.**  
Internal Battery may leak, burst, ignite, etc.



Prohibited

**Do not damage (nail, hammer, stomp, etc.) handset or subject it to strong impact.**

Internal Battery may leak, overheat, burst, ignite, etc.



Compulsory

**If battery fluid gets in eyes, do not rub; rinse with clean water and consult a doctor immediately.**

Eyes may be severely damaged.



## WARNING



Compulsory

**If battery fluid contacts skin or clothes, discontinue handset use and rinse with clean water immediately.**

May cause skin damage.



Compulsory

**If charging continues even after specified Charging Time, stop charging.**

Internal Battery may leak, overheat, burst, ignite, etc.



Compulsory

**For abnormal odor, excessive heat, discoloration or distortion, move handset away from sources of flame, being careful not to burn or injure yourself.**

Continued use may cause Internal Battery to leak, overheat, burst, ignite, etc.



Compulsory

**Do not let your pet bite handset; if this occurs, do not use that handset.**

Pet bites may cause Internal Battery to leak, overheat, burst or ignite. May cause handset/related hardware to malfunction, or fire may result.



## CAUTION



Prohibited

**Do not dispose of handset with ordinary refuse.**

Battery is built into handset; take handset to a nearest SoftBank Shop for appropriate disposal.

# Handset



## WARNING



Prohibited

**Handset Display, back surface and Camera use tempered glass. Do not subject to shock (dropping, etc.) or excessive force.**

May cause Display, back surface or Camera to break and scatter sharp pieces. If Display or Camera breaks, be careful not to directly touch shards or broken parts. May cause injury.



Prohibited

**Do not use handset while driving or cycling.**

Accidents may result.

Phone use while driving or cycling is prohibited by law and subject to penalty; park legally beforehand.



Compulsory

**Power off near electronic devices that employ high precision control systems or weak signals.**

May cause electronic malfunctions or other problems. Take added care near these devices: Hearing aids, implanted pacemakers/defibrillators and other electronic medical equipment; fire alarms, automatic doors and other automatic control devices.



Compulsory

**Inside aircraft, follow airline instructions regarding handset use.**

Radio waves from handset may interfere with flight safety.



Compulsory

**Users with a heart condition should adjust ringtone vibration and volume as needed.**

May cause heart damage.



Compulsory

**If thunder is audible while outdoors, power off; find cover.**

There is a risk of lightning strike or electric shock.



Prohibited

**Do not shine Mobile Light in eyes.**

May temporarily affect eyesight or startle, leading to accidents.



Prohibited

**Do not cover/wrap handset with a cloth or blanket while charging. In addition, do not leave handset covered with a cloth or blanket when going to bed.**

Heat may collect, resulting in fire, burns, malfunction, etc.

## CAUTION



Prohibited

**Do not use handset when it may affect a vehicle's electronic equipment.**

Handset use inside vehicles may cause electronic equipment to malfunction, resulting in accidents.



Prohibited

**Keep handset away from magnetic items (e.g., magnetic cards).**

Data on bank cards, credit cards, telephone cards, floppy disks, etc. may be lost.



Compulsory

**Handset may become hot during prolonged use in extreme heat (fire, heat sources, direct sunlight, inside vehicles, etc.), or in a warm place or where heat collects, such as under a kotatsu (blanketed warming table) or electric blanket, next to a kairo (worn warming patch), etc.**

Prolonged contact with skin may cause low-temperature burns.



Compulsory

**When using handset for an extended period (e.g., to play game applications) while charging, handset and Charger may become hot; avoid prolonged contact with hot parts.**

May cause low-temperature burns or other problems.



Prohibited

**Always maintain some distance from Speaker while ringtones, music or other handset sounds play.**

Excessive volume may damage ears or hearing.



Compulsory

**View Full Seg/One Seg in a sufficiently bright location, at a reasonable distance from Display.**  
May deteriorate vision.



Compulsory

**Moderate handset volume when using earphones.**

Excessive volume may damage ears or hearing.

## Charger (Optional Accessory)



### WARNING



Prohibited

**Do not cover/wrap Charger with a cloth or blanket while charging. In addition, do not leave Charger covered with a cloth or blanket when going to bed.**

Heat may collect, resulting in fire, burns, malfunction, etc.



Prohibited

**Use only the specified voltage.**

Non-specified voltages may cause fire, malfunction, etc.

• AC Charger: AC 100 V - 240 V Input

Do not use power adapters designed for overseas travel. Transformer use may cause fire, electric shock or malfunction.



Disconnect  
Power Source

**Unplug Charger when not in use; grasp plug and disconnect it.**

If a foreign object/liquid adheres to blades, or if blades get stomped while Charger is plugged in, electric shock, fire or malfunction may result.



Disconnect  
Power Source

**If liquid (water, pet urine, etc.) gets inside, grasp plug and disconnect Charger immediately.**

May cause electric shock, smoke or fire.



Compulsory

**To remove debris, grasp plug and disconnect Charger, then clean with a dry cloth.**

Fire may result.



Compulsory

**Plug Charger firmly into the outlet, keeping the plug and connector away from conductive material (pencil lead, metal strip/jewelry, etc.).**

May cause fire, burns, malfunction, etc. due to electric shock or short-circuiting.



Do Not Use  
Wet Hands

**Do not touch Charger plug or connector with wet hands.**

May cause electric shock, malfunction, etc.



Prohibited

**Do not touch Charger if thunder is audible.**

May cause electric shock or other problems.



Prohibited

**Do not use Charger in high humidity or near water (in bathrooms, shower rooms, etc.).**

May cause fire, electric shock or malfunction.



# CAUTION



Disconnect  
Power Source

**Before cleaning, grasp plug and disconnect Charger.**

May cause electric shock or other problems.



Compulsory

**Always grasp plug (not cord/cable) to disconnect Charger.**

Pulling plug by cord/cable may damage cord/cable and cause electric shock, fire, etc.



Compulsory

**When Charger is connected to a power strip, do not apply excessive force by stomping or in any other way.**

May cause fire or malfunction.



Prohibited

**Do not subject Charger to strong impact while it is plugged in.**



May cause malfunction or injury.



Prohibited

**Keep hands and other body parts away from blades.**

May cause burns, electric shock, injury or malfunction.

## TV Antenna Cable



### WARNING



Prohibited

**If cord is damaged, do not use TV Antenna Cable.**

May cause fire, electric shock, or burn injuries.



Prohibited

**Do not place heavy objects on top of TV Antenna Cable.**

May cause fire, electric shock, or burn injuries.



Do Not Use  
Wet Hands

**Do not touch TV Antenna Cable with wet hands.**

May cause fire, electric shock, or burn injuries.



Compulsory

**Clean off dust adhering to plug of TV Antenna Cable.**

May cause fire, electric shock, or burn injuries.



Compulsory

**When disconnecting TV Antenna Cable from handset, grasp plug and pull, without forcefully pulling cord.**

May cause fire, electric shock, or burn injuries.



### CAUTION



Prohibited

**Do not store in a location that is subject to excessive dust, high humidity, or high temperatures.**

May cause fire, electric shock, or burn injuries.



Prohibited

**Do not swing handset grasping TV Antenna Cable.**

May result in hitting yourself or other persons, causing injury or other accident.

## Handset Use & Electronic Medical Equipment

This section is based on "Guidelines for Use of Mobile Phones and Other Devices in Hospitals" (Electromagnetic Compatibility Conference, August 2014) and "Guidelines to safeguard implanted medical devices against radio emissions from the use of radio equipment" (Ministry of Internal Affairs and Communications).



### WARNING



Compulsory

**Persons with implanted pacemaker/defibrillator should keep handset more than 15 cm away.**

Radio waves may interfere with implanted pacemakers or defibrillators.



Compulsory

**Before using electronic medical equipment other than implanted pacemaker/defibrillator outside medical facilities, consult the vendor on radio wave effects.**

Radio waves may interfere with electronic medical equipment.



Compulsory

**If it may not be possible to keep handset 15 cm away from other persons (e.g., in a crowded situation where you cannot move freely), suspend signal-transmitting functions (e.g., by activating Airplane mode) or power off beforehand. If an application that automatically powers handset on is installed, disable that feature before powering off. Persons with implanted pacemaker/defibrillator may be near.**

Radio waves may interfere with implanted pacemakers or defibrillators causing such devices to malfunction.



Compulsory

**Observe these rules inside medical facilities to avoid effects of radio waves on electronic medical equipment:**

- Follow instructions regarding mobile phone use within medical facilities.
- Always turn off handset within operating rooms, intensive care units (ICU), etc.
- Even in patient rooms, lobbies, or other locations where mobile phone use is permitted, keep handset at a reasonable distance away from electronic medical equipment.

# Important Product Information

---

- ↓ [General Use](#)
- ↓ [Heat from Handset Use](#)
- ↓ [Camera](#)
- ↓ [Full Seg & One Seg](#)
- ↓ [In-Call/Transmission Cautions](#)
- ↓ [Urgent News \(Application\)](#)
- ↓ [Technical Regulations Conformity Certification](#)

## General Use

- If your USIM Card or handset (with USIM Card inserted) is lost or stolen, suspend your service immediately. For details, contact SoftBank Customer Support, [General Information](#).
- Handset transmissions may be disrupted inside buildings, tunnels or underground, or when moving into/out of such places; may affect calls.
- Use handset without disturbing others.
- Handsets are radios as stipulated by the Radio Law. Under the Radio Law, handsets must be submitted for inspection upon request.
- Charging by USB takes longer than by household AC outlet. Charging may not be possible/take a long time depending on connection and computer conditions.
- Handset use near landlines, TVs or radios may cause interference.
- Beware of eavesdropping.

Because this service is completely digital, the possibility of signal interception is greatly reduced. However, some transmissions may be overheard.

  - Eavesdropping

Deliberate/accidental interception of communications constitutes eavesdropping.
- Beware of harmful/malicious websites. Take added care when posting personal information.
- Display uses liquid crystal.

When wearing polarized sunglasses and depending on the angle, the screen may appear dark or distorted.
- An export license may be required to carry handset into other countries if it is to be used by or transferred to another person. However, no such license is required when taking handset abroad for personal use on a vacation or business trip and then bringing it back.

Export control regulations in the United States provide that an export license granted by the US

government is required to carry handset into Cuba, Iran, North Korea, Sudan or Syria.

## Heat from Handset Use

- Handset internal temperature may increase depending on usage or environment, causing handset to become warm. (Handset may stop charging or Display brightness may be adjusted for safety.) If handset continues to be used while warm, warning appears and handset powers off after approximately 3 minutes. Exit all applications and turn off Display to let handset cool down.
- Continuing to use Camera while handset is warm causes warning to appear, after which Camera saves captured image data and exits.

## Camera

- Mind etiquette when using Camera.
- Test Camera before shooting special moments.
- Do not use Camera in places where shooting is prohibited.
- Shot images may not be used/transferred without copyright holder (photographer) permission, except for personal use.

## Full Seg & One Seg

- Handset transmissions may be disrupted inside buildings, tunnels or underground, or when moving into/out of such places; may affect Full Seg/One Seg viewing.
- As handset transmissions differ according to where used, Full Seg/One Seg viewing may not be possible in some areas. View in a location with good handset transmission.

## In-Call/Transmission Cautions


- During calls/transmissions, calling/transmission charges/fees apply even if other functions or operations are simultaneously in use.
- Transmissions involving JavaScript may incur high charges.

## Urgent News (Application)

- Handset receives alerts by default (Receive settings are enabled).

- Alert tones sound even in Manner mode.
- Alerts are not received during calls/transmissions or in poor signal conditions.
- Depending on usage/situation, handset may receive alerts for other areas or no alerts.
- Standby Time may decrease when Receive settings are enabled.
- SoftBank Corp. cannot be held liable for any damages associated with this service, including accidents resulting from received information, reception timing or reception failure.

## Technical Regulations Conformity Certification

Handset conforms to technical regulations pursuant to the Radio Law and the Telecommunications Business Law. To check technical regulations conformity certification information (e.g., ):

In app sheet,  (Settings)  About phone  Authentication

# Handset & Hardware Care

---

↓ Handset & Hardware Care

↓ USIM/SD Card Insertion/Removal

↓ Display (Touchscreen)

↓ TV Antenna Cable

↓ Earphones-Microphone

↓ Self Check

↓ Forcing Power Off

↓ Bluetooth® Function

↓ Wi-Fi (Wireless LAN)

---

## Handset & Hardware Care

- Use handset within 5°C - 35°C and 35% - 90% humidity.
- Avoid extreme temperature or direct sunlight.
- Handset/Internal Battery may become warm during operation or while charging. This is normal.
- Warranty does not cover malfunctions resulting from misuse.
- Clean handset with a soft dry cloth. Alcohol/solvent use may fade color/print.
- Avoid scratching Display.
- Avoid heavy objects or excessive pressure. May cause malfunction or injury.
  - Do not sit on handset in back pants pocket.
  - Do not place heavy objects on handset inside handbags, packs, etc.
- Handset back cover is not removable. Do not try to remove it; may cause damage or malfunction, or affect water/dust resistance.
- Connect only specified products to Port. Other devices may malfunction or cause damage.
- Do not power off while using SD Card; may result in data loss or malfunction.
- When walking outside, moderate handset volume to avoid accidents.
- When holding handset, do not block Receiver, Mic, Speaker, or Recorder Mic.
- Proximity Sensor prevents Touchscreen misoperation during calls. Do not cover or place a sticker/label over Proximity Sensor; Display may remain off during calls, disabling handset operation.
- If your hair is between Receiver and your ear during calls, Proximity Sensor may not function properly.

Display may remain on; touching Display accidentally may end the call.

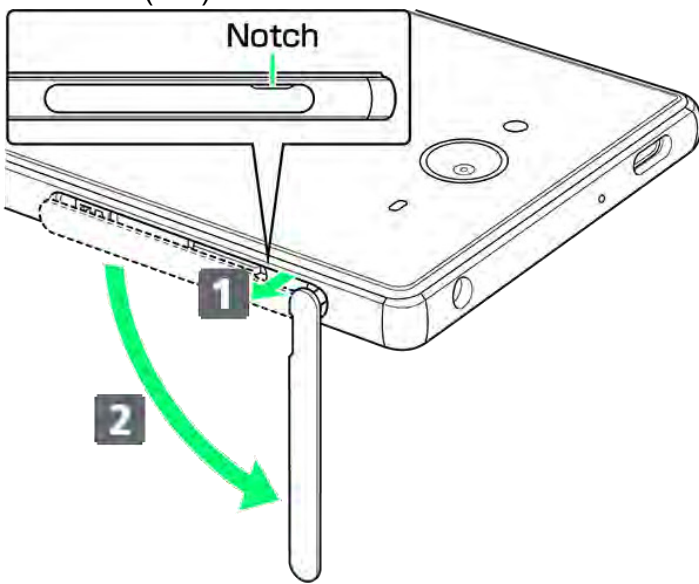
- Do not cover Light Sensor or place a sticker/label over it; may hinder ambient light detection, resulting in malfunction of Light Sensor.
- Handset Receiver is located at the center of Display upper end. If other party's voice is hard to hear during calls, hold handset so that Receiver is next to your earhole for better audibility.

## USIM/SD Card Insertion/Removal

1

### Open Card Slot Cover

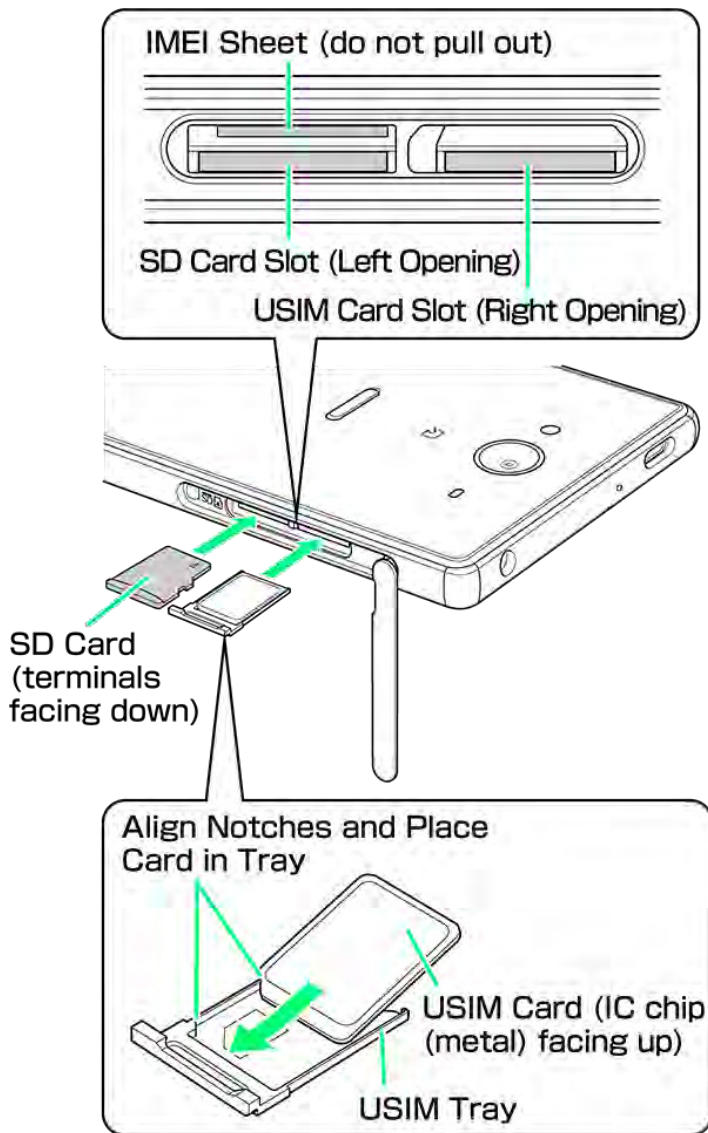
- Use notch to pull Card Slot Cover toward you as shown (1), then rotate it in the direction of the arrow (2).



2

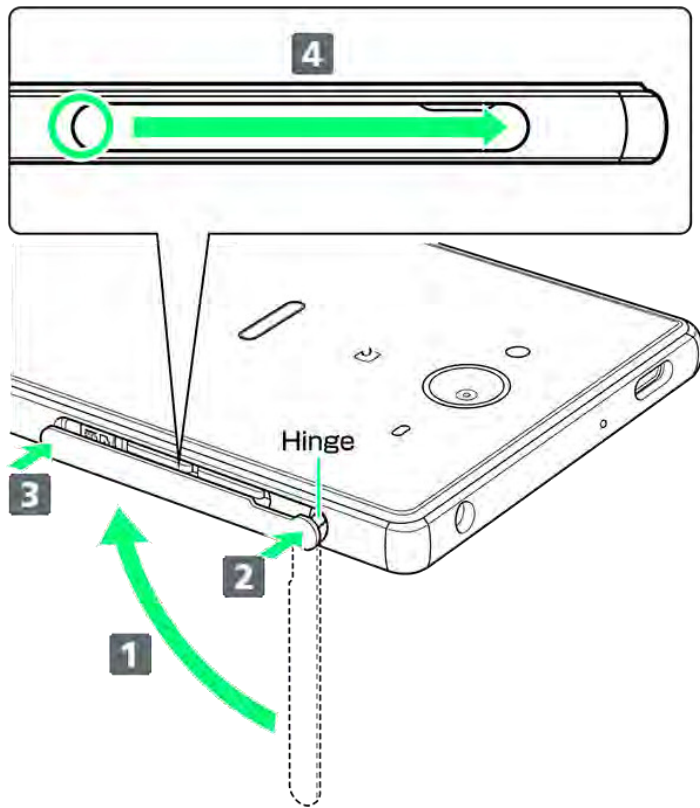
### Insert/remove USIM/SD Card





- Insert USIM Card and SD Card into correct openings in correct orientation.
- USIM Card Insertion/Removal
  - Always power off before insertion/removal.
  - Place USIM Card in USIM Tray beforehand.
  - When removing USIM Tray, do not pull it forcefully or at an angle; damage may result. Gently pull it out horizontally from the edge.
  - When inserting empty USIM Tray, do not insert it at an angle; damage may result. Check orientation of USIM Tray, then gently insert it all the way horizontally.
- SD Card Insertion/Removal
  - Unmount SD Card beforehand.
  - When removing SD Card, lightly push it in and release finger (SD Card pops out slightly); gently pull it out horizontally.

## Close Card Slot Cover









- Lift Card Slot Cover in the direction of **1** and reinsert hinge as shown (**2**); place Card Slot Cover over the slot so that there is no gap between handset and Card Slot Cover, then push it in the direction of the arrow (**3**) to close.  
When closing Card Slot Cover, push it firmly all the way from **O** area to hinge as shown (**4**).

## Display (Touchscreen)

Handset Display is Touchscreen.

If Display is wet, wipe it with a soft cloth.

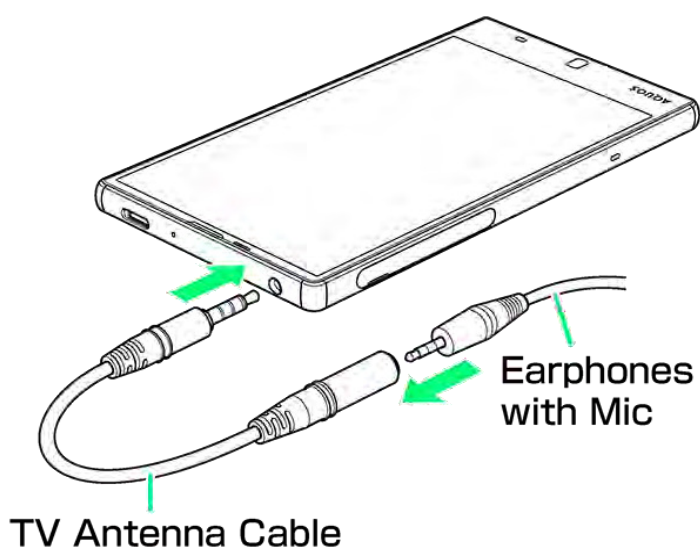
- Touchscreen may not respond in these situations:
  - Use with gloves/long fingernails
  - Use of pens, pencils or sharp objects
  - Use with objects on/against Display
  - Use while wet
- To prevent malfunctions, do not:
  - Touch Display with wet fingers
  - Use if Display is wet

- Subject Display to force/pressure
- Place a sticker or shield (commercially-available protective film, privacy protector shield, etc.) on Display
- To improve response, calibrate Touchscreen as follows.
  - In app sheet,  (Settings)  About phone  Adjust touch panel  Follow onscreen prompts
- In the following cases, Press  to turn off Display, Press  again to turn on Display and then operate handset.
  - Handset operates automatically without touch input
  - Handset does not respond to touch input

## TV Antenna Cable

To view or record Full Seg/One Seg, connect TV Antenna Cable to Earphones-Microphone Port.

- Earphones with Mic (SHLDL1; optional accessory) can be connected to use with TV Antenna Cable.
- Insert plug firmly. If plug is not inserted all the way, broadcasts may not be received or audio may not be heard.
- As connection may be poor if Port is dirty, clean with a dry cotton swab, etc. Avoid damaging Port when cleaning.
- Do not deform TV Antenna Cable plug or Earphones-Microphone Port. Deforming may cause malfunction.
- Bringing earphone cord, etc. close to handset may result in noise.



## Earphones-Microphone

Earphones with Mic (SHLDL1) are available for separate purchase. Other earphones-microphone

may not function properly on handset.

- Do not subject Earphones-Microphone Port to strong impact while using earphones-microphone; water/dust resistance may be affected.


## Self Check

If handset is unstable, diagnose the cause as follows.

In app sheet,  (Settings)  Useful  Self check  Follow onscreen prompts

## Forcing Power Off

If handset has stopped processing or won't respond to operation, power off forcibly as follows.

-  (Long Press for at least 8 seconds)  
Release finger after vibration; handset powers off.

## Bluetooth<sup>®</sup> Function

SoftBank Corp. is not liable for any damages resulting from data/information leakage due to use of handset Bluetooth<sup>®</sup> function.

### ■ Precautions

The frequency band utilized by handset Bluetooth<sup>®</sup> function is shared with industrial, scientific or medical equipment, including household microwave ovens, and used by radio stations, amateur radio stations, etc. (hereafter "other radio stations").

1. Before using Bluetooth<sup>®</sup>, visually check that no other radio stations sharing the same frequency band are in use nearby.
2. Should interference occur between handset and other radio stations, move it to a different location or cancel Bluetooth<sup>®</sup> function immediately.
3. For additional information and support, contact SoftBank Customer Support, General Information: From a SoftBank handset, call toll free at 157. To call toll free from a landline/IP phone, see "[Customer Service](#)."

### • Frequency Band

This radio station utilizes 2.4 GHz band.

FH1 indicates FHSS modulation with maximum transmission radius of 10 meters.

XX4 indicates a different modulation scheme with maximum transmission radius of 40 meters.

It is not possible for the radio station to avoid using the frequency band of a mobile unit identification

apparatus.



## Wi-Fi (Wireless LAN)

Wireless LAN (hereafter "Wi-Fi") uses radio waves to enable communication between compatible devices within range. However, it is advisable for the user to configure security settings to avoid risk of data interception.

- Do not use Wi-Fi near electrical appliances, audiovisual equipment or office automation equipment; may affect Wi-Fi transmission speed, availability, clarity, etc. (Especially when a microwave oven is in use.)
- If there are multiple access points nearby, handset may not detect access points correctly.

### ■ Precautions

The frequency band utilized by handset Wi-Fi is shared with industrial, scientific or medical equipment, including household microwave ovens, and used by radio stations, amateur radio stations, etc. (hereafter "other radio stations").

1. Before using Wi-Fi, visually check that no other radio stations sharing the same frequency band are in use nearby.
2. Should interference occur between handset and other radio stations, move it to a different location or disable Wi-Fi immediately.
3. For additional information and support, contact SoftBank Customer Support, General Information: From a SoftBank handset, call toll free at 157. To call toll free from a landline/IP phone, see ["Customer Service."](#)

### • Frequency Band

This radio station utilizes 2.4 GHz and 5 GHz band with DSSS-OFDM modulation. Maximum transmission radius is 40 meters.



### • Channels in 5 GHz band

Three bands are available within 5 GHz frequency band: 5.2 GHz, 5.3 GHz, and 5.6 GHz (W52, W53, and W56).

- W52 (5.2 GHz band; channels 36, 38, 40, 44, 46, 48)
- W53 (5.3 GHz band; channels 52, 54, 56, 60, 62, 64)
- W56 (5.6 GHz band; channels 100, 102, 104, 108, 110, 112, 116, 118, 120, 124, 126, 128, 132,

134, 136, 140)

Use of 5.2 GHz or 5.3 GHz band (W52/W53) for outdoor communication is prohibited by the Radio Law.

■ Simultaneous Use with Bluetooth®

Wi-Fi (IEEE 802.11b/g/n) and Bluetooth® transmit on the 2.4 GHz band. Enabling handset Bluetooth® or using Bluetooth® devices near handset may affect Wi-Fi transmission speed, availability and clarity. Should interference occur, cancel handset Bluetooth® or discontinue Bluetooth® device use.

- Handset supports Wi-Fi channels 1 - 13. Handset does not connect to access points set to other channels.
- Available channels vary by country.
- For use of Wi-Fi aboard aircraft, check with airline beforehand.
- In some countries/regions, there are restrictions on the use of Wi-Fi. Check the local laws and regulations before using Wi-Fi on handset abroad.

# General Notes

---

"603SH" here refers to this mobile phone "AQUOS Xx3 mini."

---

↓ Portrait Rights

---

↓ Copyrights

---

↓ d e

---

↓ General Notes

---

↓ FCC Notice

---

---

---

---

---

---

---

---

## Portrait Rights

Portrait rights protect individuals' right to refuse to be photographed or to refuse unauthorized publication/use of their photographs. Portrait rights consist of the right to privacy, which is applicable to all persons, and the right to publicity, which protects the interests of celebrities. Therefore, photographing others including celebrities and publicizing/distributing their photographs without permission is illegal; use Camera responsibly.

## Copyrights

Copyright laws protect sounds, images, computer programs, databases, other materials and copyright holders. Duplicated material is limited to private use only. Use of materials beyond this limit or without copyright holder permission may constitute copyright infringement, and be subject to criminal punishment. Comply with copyright laws when using images shot with Camera.

The software contained in handset is copyrighted material; copyright, moral right and other related rights are protected by copyright laws. Do not copy, modify, alter, disassemble, decompile or reverse-engineer the software; do not separate it from hardware in whole or part.

## Radio Wave Exposure and Specific Absorption Rate (SAR) Information

### ■ Specific Absorption Rate (SAR) for This Product (for Japan)

**This mobile phone [603SH] meets the Japanese technical regulations\* and international guidelines for exposure to radio waves.**

The Japanese technical regulations for exposure to radio frequency energy established permitted levels of radio frequency energy, based on standards developed by independent scientific organizations through periodic and thorough evaluation of scientific studies.

The regulation employs a unit of measurement known as the Specific Absorption Rate, or SAR.

The SAR limit is 2 watts/kilogram (W/kg) averaged over ten grams of tissue.

The limit includes a substantial safety margin designed to assure the safety of all persons, regardless of age and health.

The value of the limit is equal to the value given in international guidelines recommended by ICNIRP\*\*, which is in collaboration with the World Health Organization (WHO).

The highest SAR value for this mobile phone is

0.628 W/kg\*\*\* when tested for use at the ear, and

0.481 W/kg\*\*\* when worn on the body in the below manner\*\*\*\*.

While there may be differences between the SAR levels of various phones and at various positions, all phones meet the Japanese technical regulations.

Although the SAR is determined at the highest certified power level, the actual SAR of the phone during operation can be well below the maximum value.



## Use at positions other than at the ear\*\*\*\*

This mobile phone may be used at positions other than at the ear. By using an accessory such as a belt clip holster that maintains a 1.5 cm separation with no metal (parts) between the body and the mobile phone, this mobile phone will comply with international guidelines for radio wave protection.

\* The technical regulation is provided in Article 14-2 of the Ministry Ordinance Regulating Radio Equipment.

\*\* International Commission on Non-Ionizing Radiation Protection

\*\*\* The value is under simultaneous transmission use conditions.

The World Health Organization has announced that “A large number of studies have been performed over the last two decades to assess whether mobile phones pose a potential health risk. To date, no adverse health effects have been established as being caused by mobile phone use.”

For more information about SAR, see the following websites:

Ministry of Internal Affairs and Communications (MIC)  
<http://www.tele.soumu.go.jp/e/sys/ele/body/index.htm>

Association of Radio Industries and Businesses (ARIB)  
<http://www.arib-emf.org/01denpa/denpa02-02.html>

(Japanese)

**This mobile phone [603SH] is confirmed to comply with guidelines relating to effects of radio wave exposure as set forth by the Council of Europe (CE) and the Federal Communications Commission (FCC). Refer to the following.**

### ■ **European RF Exposure Information**

Your mobile device is a radio transmitter and receiver. It is designed not to exceed the limits for exposure to radio waves recommended by international guidelines. These guidelines were developed by the independent scientific organization ICNIRP and include safety margins designed to assure the protection of all persons, regardless of age and health. The guidelines use a unit of measurement known as the Specific Absorption Rate, or SAR. The SAR limit for mobile devices is 2.0 W/kg and the highest SAR value for this device when tested at the ear is 0.507 W/kg\*. As mobile devices offer a range of functions, they can be used in other positions, such as on the body. In this case, the highest tested SAR value is 1.440 W/kg\* at the separation distance of 0.5 cm from the body. For electoronic safety, maintain the separation distance with accessories containing no metal, that position handset a minimum of the above distance. Use of other accessories may not ensure compliance with RF exposure guidelines.

\* The tests are carried out in accordance with international guidelines for testing.

## ■ FCC RF Exposure Information

Your handset is a radio transmitter and receiver. It is designed and manufactured not to exceed the emission limits for exposure to radio frequency (RF) energy set by the Federal Communications Commission of the U.S. Government.

The guidelines are based on standards that were developed by independent scientific organization through periodic and thorough evaluation of scientific studies. The standards include a substantial safety margin designed to assure the safety of all persons, regardless of age and health.

The exposure standard for wireless handsets employs a unit of measurement known as the Specific Absorption Rate, or SAR.

The SAR limit set by the FCC is 1.6 W/kg. The tests are performed in positions and locations (e.g. at the ear and worn on the body) as required by the FCC for each model. The highest SAR value for this model handset as reported to the FCC when tested for use at the ear is 0.49 W/kg, and when worn on the body in a holder or carry case, is 0.75 W/kg.

Body-worn Operation; This device was tested for typical body-worn operations with the handset kept 1.0 cm from the body. To maintain compliance with FCC RF exposure requirements, use accessories that maintain a 1.0 cm separation distance between the user's body and the handset. The use of beltclips, holsters and similar accessories should not contain metallic components in its assembly.

The use of accessories that do not satisfy these requirements may not comply with FCC RF exposure requirements, and should be avoided. The FCC has granted an Equipment Authorization for this model handset with all reported SAR levels evaluated as in compliance with the FCC RF emission guidelines. SAR information on this model handset is on file with the FCC and can be found under the Display Grant section of <http://www.fcc.gov/oet/ea/> after searching on FCC ID APYHRO002

# General Notes

"603SH" here refers to this mobile phone "AQUOS Xx3 mini."

## Handset

Do not disassemble or modify handset.

## Regulatory information

In some countries/regions including Europe<sup>※1</sup>, there are restrictions on the use of 5GHz WLAN that may limit the use to indoors only.

If you intend to use 5GHz WLAN on the device, check the local laws and regulations beforehand.

※1 The following EU and EFTA member countries:

Belgium (BE), Bulgaria (BG), Czech Republic (CZ), Denmark (DK), Germany (DE), Estonia (EE), Ireland (IE), Greece (EL), Spain (ES), France (FR), Croatia (HR), Italy (IT), Cyprus (CY), Latvia (LV), Lithuania (LT), Luxembourg (LU), Hungary (HU), Malta (MT), Netherlands (NL), Austria (AT), Poland (PL), Portugal (PT), Romania (RO), Slovenia (SI), Slovakia (SK), Finland (FI), Sweden (SE) and United Kingdom (UK), Switzerland (CH), Liechtenstein (LI), Iceland (IS), Norway (NO).

Hereby, SHARP CORPORATION declares that the radio equipment type 603SH is in compliance with Directive 2014/53/EU. The full text of the EU declaration of conformity is available at the following internet address:  
(<http://www.sharp.co.jp/k-tai/>)

### Manufacturer's Address:

Sharp Corporation, IoT Communication BU

2-13-1 Iida Hachihonmatsu

Higashihiroshima-City

Hiroshima,

739-0192

Japan

## ■ Description of accessories

Headset, Handsfree	φ3.5 audio jack, Bluetooth.
Micro USB cable	For charging, peripherals, etc.
microSD Card	microSD / microSDHC
nano UIM card	SoftBank USIM card / non-SoftBank USIM cards non-SoftBank USIM cards can be used after SIM-unlocking the handset.

## ■ Frequency range of supported bands in EU

GSM 900	Tx 880.2 to 914.8 MHz Rx 925.2 to 959.8 MHz
DCS 1800	Tx 1710.2 to 1784.8 MHz Rx 1805.2 to 1879.8 MHz
WCDMA FDD I	Tx 1922.4 to 1977.6 MHz Rx 2112.4 to 2167.6 MHz
LTE Band 1	Tx 1922.5 to 1977.5 MHz Rx 2112.5 to 2167.5 MHz
LTE Band 3	Tx 1710.7 to 1784.3 MHz Rx 1805.7 to 1879.3 MHz
Bluetooth	Tx 2402 to 2480 MHz Rx 2402 to 2480 MHz
WLAN 2.4 GHz	Tx/Rx 2412 to 2472 MHz (Bandwidth: 20MHz only)
WLAN 5 GHz	W52(U-NII 1): TX/RX 5180 - 5240MHz (BW:20MHz) TX/RX 5190 - 5230MHz (BW:40MHz) TX/RX 5210 MHz (BW:80MHz) W53(U-NII 2): TX/RX 5260 - 5320MHz (BW:20MHz) TX/RX 5270 - 5310MHz (BW:40MHz) TX/RX 5290 MHz (BW:80MHz) W56(U-NII 2ext): TX/RX 5500 - 5700MHz (BW:20MHz) TX/RX 5510 - 5670MHz (BW:40MHz) TX/RX 5530 - 5610MHz (BW:80MHz)
NFC	Tx/Rx 13.56 MHz
GPS	Rx L1 (1575.42 MHz)

## ■ Maximum transmit power

GSM 900	+33 dBm (Power Class4)
DCS 1800	+30 dBm (Power Class1)
WCDMA FDD I	+24 dBm (Power Class3)
LTE Band 1	+23 dBm (Power Class3)
LTE Band 3	+23 dBm (Power Class3)
Bluetooth	+4.0 dBm (Power Class1)
WLAN 2.4 GHz	+12.5 dBm
WLAN 5 GHz	+10.5 dBm
NFC	-10 dB $\mu$ A/m at 10 m

## ■ Battery Cautions

---

### Use specified Charger only.

Non-specified equipment use may cause Internal Battery to leak, overheat, burst or ignite, and may cause Charger to overheat, ignite, malfunction, etc.

---

Battery is built into handset. Do not dispose of handset with ordinary refuse; take it to a Y!mobile Shop for appropriate disposal.

---

Charge handset in ambient temperature 5°C - 35°C; Internal Battery may leak/overheat and performance may deteriorate outside this range.

## ■ Mobile Light

---

### Do not shine Mobile Light in eyes.

May temporarily affect eyesight or startle, leading to accidents.

## ■ Volume Level Caution



To prevent possible hearing damage, do not listen at high volume levels for long periods.

## Headphone Signal Level

The maximum output voltage for Music Player function, measured in accordance with EN 50332-2, is **136 mV**.

## ■ Stand-by Mark

 : This symbol means the stand-by on/off.

## FCC Notice

- This device complies with part 15 of the FCC Rules. Operation is subject to the following two conditions:  
(1) This device may not cause harmful interference, and  
(2) this device must accept any interference received, including interference that may cause undesired operation.
- Changes or modifications not expressly approved by the manufacturer responsible for compliance could void the user's authority to operate the equipment.



## ■ FCC Information to User

This equipment has been tested and found to comply with the limits of a Class B digital device, pursuant to Part 15 of the FCC Rules.

These limits are designed to provide reasonable protection against harmful interference in a residential installation.

This equipment generates, uses and can radiate radio frequency energy and, if not installed and used in accordance with the instructions, may cause harmful interference to radio communications.

However, there is no guarantee that interference will not occur in a particular installation; if this equipment does cause harmful interference to radio or television reception, which can be determined by turning the equipment off and on, the user is encouraged to try to correct the interference by one or more of the following measures:

1. Reorient/relocate the receiving antenna.
2. Increase the separation between the equipment and receiver.
3. Connect the equipment into an outlet on a circuit different from that to which the receiver is connected.
4. Consult the dealer or an experienced radio/TV technician for help.

# Water & Dust Resistance

---

↓ [Handset Water & Dust Resistance](#)

↓ [Precautions](#)

↓ [Charging Cautions](#)

↓ [Care & Maintenance](#)

↓ [Washing Handset](#)

↓ [Drying Handset](#)

---

## Handset Water & Dust Resistance

Handset complies with IPX5<sup>1</sup> and IPX8<sup>2</sup> water protection standards as well as IP5X<sup>3</sup> dust protection standard, with Card Slot Cover closed firmly.

<sup>1</sup>IPX5 compliant means that a handset continues to function as a phone after being subjected to a water jet (approximately 12.5 liters/min.) discharged from a nozzle (inner diameter: 6.3 mm), from all directions (approximately 3 m from handset) for at least 3 minutes.

<sup>2</sup>IPX8 compliant means that a handset continues to function as a phone after being gently submerged to the depth of 1.5 m in still tap water at room temperature, left there for approximately 30 minutes, then removed from it.

<sup>3</sup>IP5X compliant means that a handset continues to function as a phone and its safety is maintained after being agitated in a device containing dust of 75 µm or smaller in diameter for 8 hours, then removed from the device.

- Water/dust resistance may be affected under some circumstances. Warranty does not cover malfunctions resulting from misuse.
- Handset is compliant with IPX5 and IPX8 water protection standards as well as IP5X dust protection standard. However, ingress of dirt, sand, mud, metal powder, food, beverage, sea water, etc. may cause malfunction.

### ■ Handset Care

- Close Card Slot Cover firmly. Debris (hair, sand, fibers, etc.) trapped between gasket and Card Slot may allow ingress of liquid/dust.
- If handset is exposed to liquids with Card Slot Cover open, they may enter handset and cause electric shock or malfunction. Discontinue use and power off.
- If handset is wet, wipe it with a dry cloth.

- Never open/close Card Slot Cover with wet hands or while handset is wet or has a foreign object adhered to it.
- Do not use Earphones-Microphone Port or External Device Port while it is wet or obstructed by sand/dirt; water/dust resistance may be affected, or malfunction, burns or fire may result due to electric shock, short-circuiting, etc.
- Handset is only water resistant against fresh/tap water between 5°C - 35°C.

## Precautions

- Do not subject handset to soap, detergent, bath powder/oil, sea/pool/spa water, hot water, etc.
- Rinse off sea/pool water, beverage, dirt, sand, mud, etc. immediately with fresh/tap water between 5°C - 35°C; residue may cause malfunction if allowed to dry.
- Do not soak handset in bath or pool; never use it in water (including key operation).
- Handset is not resistant to water pressure. Avoid high-pressure water/shower (over 6 liters/min.) and water immersion.
- Do not expose handset to high humidity for long periods; avoid prolonged use in bath/shower rooms.
- Volume may be low when an opening such as Mic, Recorder Mic, Receiver or Speaker is wet; dry handset before use (see "[Drying Handset](#)").
- Charger and other optional accessories are not water or dust proof. Do not use in high humidity or near water (outdoors, in bathrooms, shower rooms, etc.); may cause fire, electric shock or malfunction.
- Do not subject handset to strong impact (e.g., from a fall); do not poke Mic, Receiver, Speaker, Recorder Mic, Pressure Vent, etc. with a sharp object; water/dust resistance may be affected.
- Avoid placing handset directly on sand. Sand may penetrate Receiver, Speaker, etc., resulting in low volume.
- To prevent condensation, warm handset to room temperature before bringing it from a cold place into a warm place such as a bathroom. If condensation occurs, leave handset at room temperature until it is dry.
- Handset does not float on water.
- Keep handset out of heavy rain.

## Charging Cautions

- Never connect Micro USB plug while handset or Charger is wet.  
Handset is water resistant; however, if Micro USB plug is inserted while it is wet, liquid (tap water, beverage, sea water, pet urine, etc.) or a foreign object adhered to handset or Micro USB plug may cause overheating, burnout, fire, malfunction, burns, etc. due to electric shock,

short-circuiting, etc.

- Do not use Charger where water is regularly in use (kitchens, bathrooms, shower rooms, etc.); may cause fire or electric shock.

## Care & Maintenance

- Proper care of Card Slot Cover gasket is crucial for continued handset water/dust resistance. Observe the following:
  - Do not remove or damage gasket. Keep it clean.
  - If Card Slot Cover is damaged or deformed, contact a SoftBank Shop.
- Do not insert a sharp object into Card Slot Cover gap, Earphones-Microphone Port or External Device Port.
- To maintain water/dust resistance, it is recommended to replace Card Slot Cover every 2 years regardless of its condition. Customer-requested Card Slot Cover replacement incurs fees and requires handset submission. For details, contact a SoftBank Shop or SoftBank Customer Support, [General Information](#).

## Washing Handset

Wipe off dirt, sand, beverage, etc., gently with a cloth. Then hold handset approximately 10 cm below faucet or shower head and wash with low-pressure tap water (6 liters/min. or lower) at room temperature (5°C - 35°C). Wash with your hands, taking care not to open Card Slot Cover; do not use a brush or sponge. Dry handset before use; after drying it well, power on.

- Before washing handset, make sure that Card Slot Cover is closed firmly.
- Do not use a washing machine or ultrasonic cleaner.
- Earphones-Microphone Port and External Device Port tend to accumulate dust, sand, etc.; rinse and dry them completely before use. Any residue may cause malfunction, burns or fire.
- Do not put a cotton swab, cloth, etc. into Earphones-Microphone Port or External Device Port; water resistance may be affected causing malfunction.

## Drying Handset

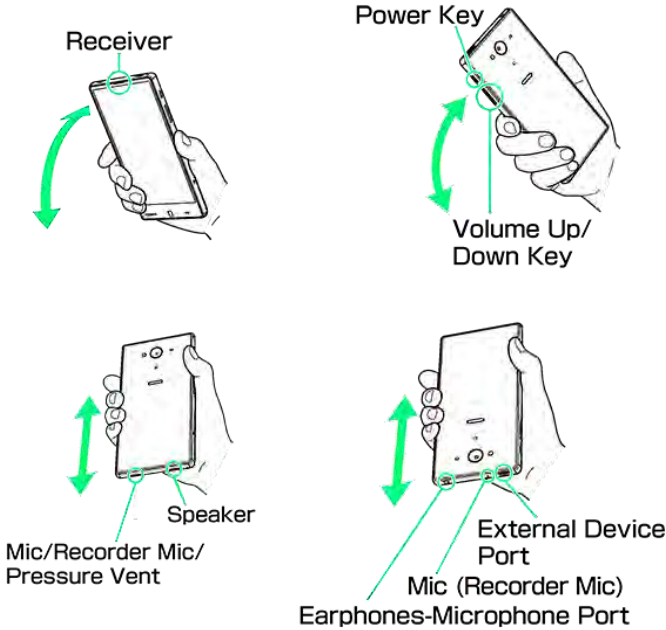
After exposing handset to water, be sure to dry Receiver, Power Key, Volume Up/Down Key, Mic, Recorder Mic, Pressure Vent, Speaker, Earphones-Microphone Port and External Device Port.

1

Wipe handset surface with dry cloth

2

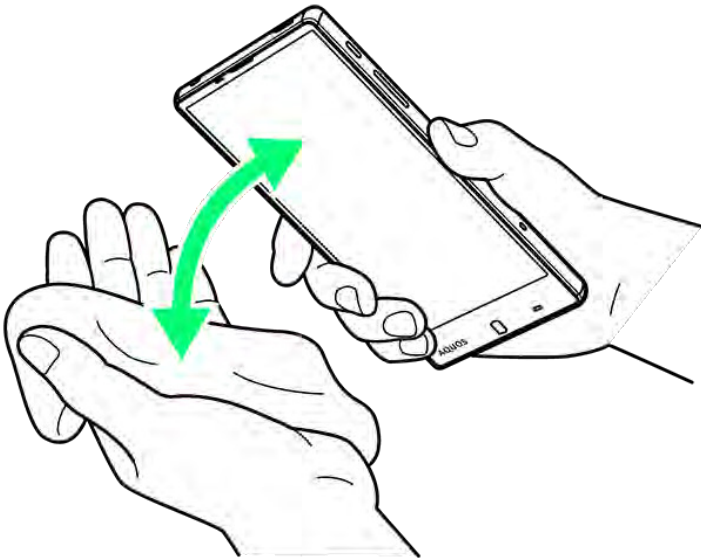
Holding handset firmly by its sides, shake it about 20 times



- When shaking handset, hold it firmly so as not to drop it.

3

Pat against dry cloth to remove moisture from openings and grooves



- Water may be trapped in openings; pat against a dry cloth to remove it.

## 4

Leave handset on dry cloth for approximately 2 - 3 hours at room temperature

### **Cautions**

#### **When Removing Moisture**

Do not put a cotton swab, cloth, etc. into openings; water resistance may be affected.

#### **After Drying Procedure**

Do not use handset in wet conditions.

- Calls may fail, or moisture may transfer to clothes, bag, etc.
- Moisture may short-circuit Earphones-Microphone Port, External Device Port or other parts.
- Exposure to cold may freeze moisture and cause malfunction.