

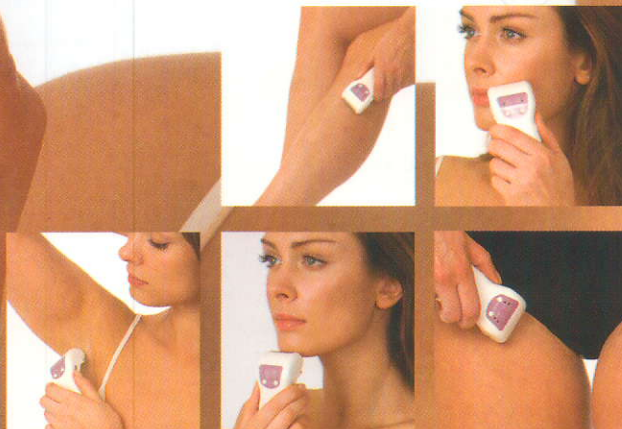
Verseo

eGLIDE™

ROLLER ELECTROLYSIS SYSTEM

The easy way to remove unwanted hair

instruction
guide





contents

▶ The Technology behind e-GLIDE	3
▶ Hair Growth Cycles	3
▶ Effective use of e-GLIDE	4
▶ Product Key	5
▶ Important Notes	6
▶ How to use e-GLIDE	7
▶ How to use e-GLIDE on face	7-8
▶ How to use e-GLIDE on body	8-9
▶ Important Note	9
▶ Your Questions Answered	10
▶ Technical Data	11



e-glide contains

- ▶ **e-GLIDE**
- ▶ 2 x AAA Heavy Duty Batteries
- ▶ Tweezers
- ▶ Stencil
- ▶ Skin Marker Crayon
- ▶ 75ml/3 fl. oz. conductive gel
- ▶ Full Instruction Guide
- ▶ Carry Case

e-glide technology

At last the virtually painless solution for hair removal.*

The **e-GLIDE** allows many hairs to be addressed, affected simultaneously. All types of hair can be effectively removed.

The only way to deter the regrowth of hair is at the hair follicle. This is the growth centres for hair. Salt water is found in its purest form at the base of the follicle. When a direct galvanic current is passed through it, as that transmitted by the **e-GLIDE** an electrolytic action takes place changing the salt water to Sodium Hydroxide - commonly known as Lye. This is an alkaline which damages the hair root every time the process is repeated. This is a progressive system and over a period of time with regular use will result in hair removal.



As this amazing technology is needle free, there should be no pain, scarring or pitting.

* Clinical trials carried out in USA, confirmed permanent hair reduction in excess of 40% over a 90 day period. Subjects were administered on average 10 minutes treatment per week.

hair growth cycles

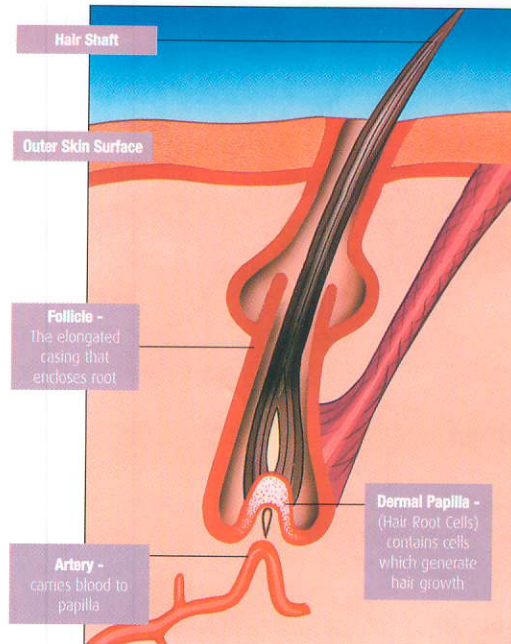
To understand how hairs grow and how you can remove them, there are three things you need to know. First, a person has more than 500 of these follicles per square inch. Each of these follicles are capable of growing a hair at any time. However, less than 20% of them grow at the same time.

Second, the hair follicles grow in cycles. Since not all grow at the same time, there are periods of rest for the follicles. During this rest period, the hair may remain in the follicle for a long time or it may fall out. The follicle actually shrinks during the rest period and the dermal papilla cells are separated from the bottom of the follicle. When the rest period is over, the follicle grows down to meet the dermal papilla again, and the cells start making another hair. This cycling of each follicle goes on for a lifetime.

For many of the hairs, the period of active growth may only last for 2 weeks after you see the hair. As you will learn, E-Glide can be effective on these hairs within this 2 week period while they are still growing.

Third, it takes 8-12 weeks for a hair to grow from the base of the follicle to the surface of the skin so you can see it. What this means is that even if you just tweeze a hair out, you have to wait 8-12 weeks for the hair to grow again. Many people think if they tweeze or wax all the hairs from an area of skin one day, and see hairs in the same area the next week, that these are the same hairs that have regrown. You now know that this is impossible. The hairs you see a week later in the same area are from different hair follicles.

However, **e-GLIDE** HAIR REMOVAL SYSTEM should be without the pain, pitting and scarring. It can be used safely and effectively on most skin types.



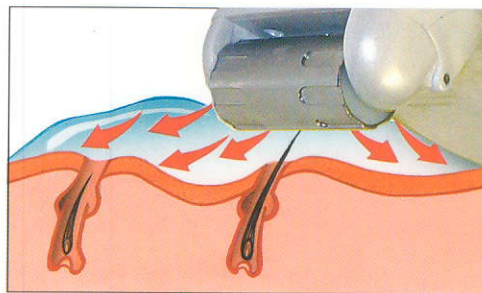
effective use of e-glide

To effectively stop hair growth in its growth cycle, when the Dermal Papilla cells in the hair root are in their active phase. During the rest period in the hair growth cycle, the Dermal Papilla cells retreat below the follicle.

When you first remove a hair or hairs, you do not know which hairs are in growth cycle or rest period. Only when hairs re-appear are you sure you can re-apply the **e-GLIDE**. You have around 2 weeks of growth cycle once a hair has appeared, to apply further **e-GLIDE** use.

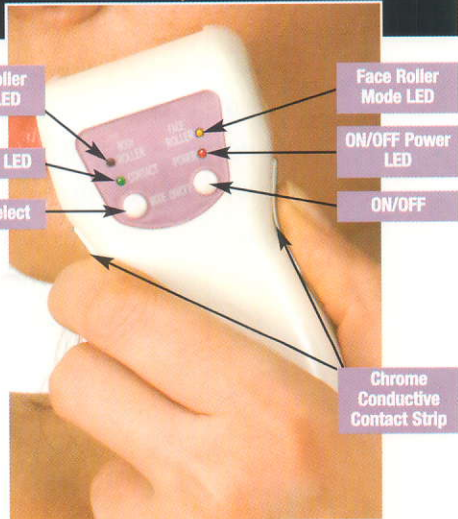
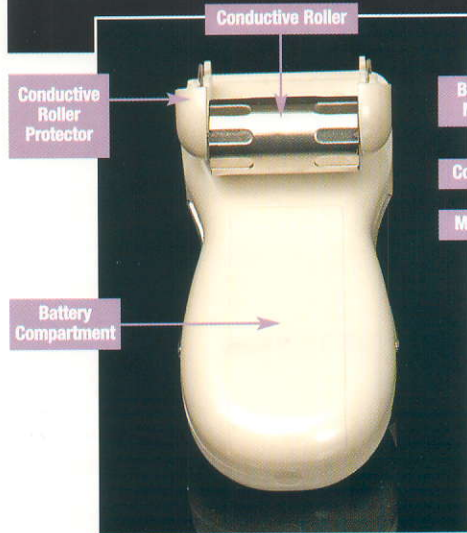
The process of hair removal is not therefore instant.

You will need some patience, but will be rewarded by less and less hairs re-appearing.



This diagram shows the electronic pulses from the Roller being conducted through the gel into the hair follicle. The hair inside the hair follicle is surrounded by a water and salt solution which is also conductive and allows the pulses to travel right down to the root. During the use time, the electronic pulses will change the chemical structure of the water and salt solution to Sodium Hydroxide. Over time this will destroy the hair root inside the follicle, so hairs will not re-grow.

product **key**



important notes for the e-glide

PATCH TEST Before you use the **e-GLIDE** on facial hair you should first test it on the back of your neck. Follow instructions for Face use on page 7 & 8.

If you experience any adverse reaction on your neck, **DO NOT USE e-GLIDE** on your face. Contact your local distributor.

- **Facial Hair** Remove all make up using your normal cleansing routine. (Preferably avoid using alcohol based cleansers). The area of use must be thoroughly clean, dry and non-greasy.
- **Body Hair** Thoroughly cleanse the area of use as above. You should cut long hairs as short as possible with scissors or a razor before applying the conductive gel.

please do not do the following

- **DO NOT** use perfume or perfumed products prior to use
- **DO NOT** use alcohol based cleansers prior to use
- **DO NOT** use on open abrasions, inflamed skin or sunburnt areas
- **DO NOT** use on hairs growing from moles at any time
- **DO NOT** use on delicate areas such as eyelids.
- **DO NOT** use if suffering from diabetes, epilepsy, phlebitis or if you have a heart condition
- **DO NOT** use during pregnancy.
- **DO NOT** use near varicose veins
- **DO NOT** use the **e-GLIDE** without the conductive gel
- **DO NOT** exceed recommended application times or use on same area within 24 hours

IF IN DOUBT – PLEASE CONSULT YOUR DOCTOR

how to use your e-glide

General Guide To Using e-GLIDE

- **Install Batteries.** Open battery compartment and insert 2 x AAA batteries (included) making sure polarity is correct.
- **Turn Power on.** Press on / off button and power LED (red) will indicate power on.
- **Application Modes.** There are 2 modes, Face Roller and Body Roller. Press mode button and LED will indicate mode selected.
- **Holding e-GLIDE.** You must hold the e-GLIDE ensuring your finger and thumb are touching the chrome contact strips each side of unit (**Fig 1**).
- **e-GLIDE Conductive Gel.** Apply conductive gel as indicated for the face and body.
- **Use.** The e-GLIDE will beep twice when the roller is placed on the skin after applying conductive gel. The green LED will light up indicating good contact.
- **Finishing Use.** The e-GLIDE will beep 3 times indicating the end of a cycle, and automatically turn off.
- **After Use.** It is best to apply a moisturiser, as electrolysis can dry out the skin.
- **Do Not exceed application times** described in face and body usage.



Fig 1

for use on the face

Use the following procedure to do a patch test on the back of your neck before using e-GLIDE on your face.

- Thoroughly clean skin as described in page 6.
- Apply conductive gel on to area of use. Lightly smooth over skin. You do not have to rub gel right into skin (**Fig 2 overleaf**).
- Switch on unit and select Face Roller mode.



Upper Lip



Chin

for use on the face

- Making sure your finger and thumb are touching chrome conductive strips each side of unit, place roller on area of use (Fig 3).
- Unit will bleep twice when roller touches skin and green contact LED will come on.
- Area of use should be 2 to 3 square centimetres.

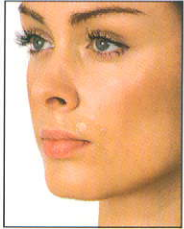


Fig 2



Fig 3

- Gently roll the roller back and forth over area of use making sure roller does not lose contact with the skin. If you are using e-GLIDE on small areas like the upper lip, do not worry if there is not enough room to move the Roller. As long as the Roller is in contact with the skin it will still work!

If the Roller loses contact with the skin the unit will bleep 3 times and switch off. You then have to turn unit on again and select Face Roller mode.

- An application cycle contains 3 x 20 second intervals. However there is a 10 second rest period between each 20 second interval. During the rest period contact LED will flash. The contact LED will stay on during interval time. Total cycle is 90 seconds.
- At the end of the cycle the unit will Bleep 3 times and switch off.
- Gently pull out hairs in direction of growth using tweezers provided.
- After using on one area move on to another area.
- As a general guideline to areas most effective for use:-

For upper lip or chin – Use on left side for 1 cycle and right side for 1 cycle. e-GLIDE is not designed for Eyebrows.

Do not exceed 2 application cycles of 90 seconds in the same area per day. Do not exceed 2 application cycles per day for more than 5 days per week in the same 2 to 3 cm square area.

for use on the body



Under Arms - applying gel



Under Arms



Bikini Line applying gel



Bikini Line



Legs



Fig 4



Fig 5



Fig 6



Fig 7



Fig 8

- The effective use area is 10cm x 10cm.
- The stencil measures an area 10cm x 5cm for convenience (**Fig 4**). You can therefore mark out two stencil areas using the marker crayon (**Fig 5**). Stencil areas can be marked out either side by side or one above the other as illustrated (**Fig 6**). (Marker crayon can be easily removed using a damp cloth or cotton wool).
- Thoroughly clean skin as described in page 6. It is recommended that body application should be after a bath or shower.
- Apply conductive gel on to area you have marked out for application (**Fig 7**).
- Switch on Unit and Select Body Roller Mode.
- Making sure your finger and thumb are touching chrome conductive strips each side of unit, place roller on area of use (**Fig 8**).
- Unit will bleep twice when roller touches skin and green LED will come on.
- Gently roll the roller back and forth within the 10cm square marked out. Make sure the roller does not lose contact with the skin.
If this happens unit will bleep 3 times and switch off. You then have to turn unit on again and select Body Roller mode.
- A cycle is 2 x 5 minute intervals with a 1 minute rest period after first 5 minutes. Total cycle 11 minutes.

During the rest period the contact LED will flash. The contact LED will stay on during the application time as long as the roller remains in contact with the skin.

Do not remove Roller from contact with the skin even in the rest period. If this happens 3 beeps will sound and the unit will switch off. Switch the unit on again and select Body Roller Mode.

- Mark out a new 10cm square and apply to a new area as above.
- Gently pull out hairs in direction of growth using tweezers provided.

Do not exceed 1 cycle of 11 minutes in the same area per day. Do not exceed 6 daily cycles per week in the same 10cm square application area.

note

Experience slight tingling sensation? This can be reduced with thorough cleansing of application area.

A great time to use e-GLIDE on hair is after a hot bath or shower. The skin is clean, dead skin cells have been removed and the follicles will be more open and receptive. This gives the gel clearer access to the hair root and the galvanic current from the e-GLIDE will do its job more effectively.

Hairs will also be easier to pull out with tweezers.

Cleaning the e-GLIDE

Before cleaning, the batteries should be removed from the battery compartment on the reverse side of the unit. The roller can be removed separately for cleaning. Position finger or thumb at front of roller and pull roller away from unit. Roller cover will then click open. Remove roller and clean with tissue or soft damp cloth. DO NOT IMMERSE ROLLER IN WATER! Clean any surplus gel around metal contacts each side of roller using a cotton bud.

To replace roller: Replace roller making sure pins each end of roller fit in plastic slots each end and that they are touching metal contacts. 'Click' in roller cover each side to secure roller by pushing in each side from front.



your questions answered

Will I successfully achieve hair removal?

In a word YES! Provided you carefully follow the instructions. Be patient, hair grows in 8-12 week cycles. After 60 days with regular use, you will see positive results.

Is the e-GLIDE painful?

All you may feel is a slight tingling sensation during use. Apply more gel to reduce this. Metal teeth fillings sometimes react to usage on the face and you may experience a slight metallic taste which only lasts for a short time. This is quite normal. Occasionally your skin will turn pink around the application area. This again is normal and will disappear in a short time.

When you tweeze out a hair, always make sure you do this in the direction of growth to make sure this is as painless as possible.

Can I use on areas like my legs?

Yes, but you need to use on 10cm square areas at a time.

The red on / off LED will not go on?

This normally indicates the 2 x AAA heavy duty batteries need replacing.

The green contact LED will not go on?

Poor conductivity may be due to the application area not being clean, or insufficient gel. Make sure your finger and thumb are damp when touching the chrome strips each side of the product as you touch the skin - this helps conductivity.

Check the red on / off LED is on, if not the batteries need replacing.

What causes excessive hair growth?

A number of conditions. Hormonal changes, stress, menopause, puberty, medication or hereditary conditions. These can all influence hair growth.

after usage

Always tweeze hairs out in direction of hair growth. If the skin is spotty, try a non-greasy antiseptic cream. You will find that stubborn hairs will be easier to pull out after several applications.

Simply follow your normal beauty and make up routines. We recommend a good moisturiser as use tends to dry out the skin.

technical data

Model No: 1710V

Input Voltage: 2 x AAA alkaline batteries

Output Voltage: 23 volts maximum

Output Current: 0.5 Ma (max)



Complies to: EN55014-1 : 2006,
EN61000-6-3 : 2007
EN 55014-2: 1997+A1: 2001

Conforms to: EMC Regulations (Electro
Magnetic Compatibility
Directive 2004/108/EC)

guarantee

The **e-GLIDE** is guaranteed for one year against original factory faults in material and workmanship. If repairs are necessary as a result of accident or misuse this is not included in our guarantee. Important: This undertaking is in addition to consumer's statutory rights and does not affect those rights in any way.

The **e-GLIDE** is manufactured under license in China to the exclusive UK design of Elysée Cosmetics Ltd, 12a Sun Street, Waltham Abbey, Essex EN9 1EE England.

repairs & services

If the unit is damaged, it must be returned to the **e-GLIDE** Distributor. Do not tamper with wires or attempt to open control unit as this will invalidate the guarantee.



Verseo, Inc

16 W. Main St, Beacon, NY 12508

Customer Service Toll-Free 1(877)261-1570

www.verseo.com