



## Tracking Key / Tracking Key Pro 2010 User Guide



[www.landairsea.com](http://www.landairsea.com)

- *Software Version 2010 Instructions*
- *Trouble Shooting Guide*
- *Contact Information*

Release Date: 01/15/2010

# LandAirSea Tracking Key/Pro<sup>®</sup> User Guide

---

## Contents

|  |           |
|--|-----------|
| <b>Quick Start Guide.....</b>  | <b>5</b>  |
| System Requirements .....  | 5         |
| Past Track Software Installation .....                                 | 5         |
| Connecting the Tracking Key/Pro <sup>®</sup> to your computer .....    | 11        |
| Google Earth <sup>®</sup> download and installation instructions ..... | 12        |
| Features of the LandAirSea GPS Tracking Key <sup>®</sup> : .....       | 13        |
| The GPS Tracking Key Pro <sup>®</sup> Features: .....                  | 14        |
| Read before using Key/Tracking Key Pro <sup>®</sup> .....              | 15        |
| GPS ANTENNA PLACEMENT CHART .....                                      | 16        |
| <b>Using Past Track Software .....</b>                                 | <b>17</b> |
| DOWNLOADING DATA FROM YOUR GPS DEVICE TO PAST TRACK.....               | 17        |
| PAST TRACK SETUP MENU .....  | 19        |
| Setup Device .....   | 19        |
| Set Time Zone .....  | 21        |
| Set Display Unit .....   | 22        |
| Set Google Earth <sup>®</sup> .....                                    | 23        |
| Low Speed Data Display .....   | 23        |
| Activity Report Setup .....  | 23        |
| SETTING LINE COLOR IN PAST TRACK SOFTWARE (STREET MAPS) .....          | 24        |
| STREET MAPS MENUS.....   | 25        |
| GUIDE TO THE MEANING OF ICONS IN PAST TRACK SOFTWARE .....             | 27        |
| VIEWING TRACKING DATA IN GOOGLE EARTH <sup>®</sup> .....               | 30        |
| CREATING AN ACTIVITY REPORT IN PAST TRACK.....                         | 31        |
| SETTING GPS SAMPLING RATE IN PAST TRACK .....                          | 34        |
| <b>Troubleshooting Guide.....</b>                                      | <b>35</b> |
| GENERAL TROUBLESHOOTING.....   | 35        |
| TROUBLESHOOTING PROBLEMS/SOLUTIONS .....                               | 37        |

## Warranty

LandAirSea, Inc. <http://www.landairsea.com/> Limited Warranty Policy warrants all products to be free from defects in materials and workmanship for one year from the date of purchase unless otherwise stated. (Custom built or factory modified products are covered by 60 day limited warranty.) Within this period, LandAirSea, Inc. <http://www.landairsea.com/>, at its sole discretion, will repair or replace the defective unit, which failed from established normal use. Should repairs or replacement be required, they will be made at free of charge to the original purchaser for parts or labor; however, the customer shall be responsible for any and all shipping costs to the manufacturer. This warranty does not cover failures due to abuse, misuse, water damage, accident, improper installation or unauthorized alterations or repairs.

### ***Important Notice***

This tracking device is considered water-resistant, NOT waterproof. If the intended use is outside the vehicle, we strongly recommend protecting the device using a waterproof case or alternate method, such as a plastic sandwich bag. Water spray at high speeds can penetrate the device and cause failure. Water damage is not covered under the warranty and repairs require sending the device back to the manufacturer. Cost for time and materials will apply. In addition, we use a powerful magnet to provide secure mounting options. However, mounting this device under a vehicle exposes the unit to road hazards. Because of this, lost units are not covered under the warranty. Warranty information can be viewed on our website at [www.landairsea.com](http://www.landairsea.com).

IT IS THE SOLE RESPONSIBILITY OF THE BUYER, OWNER, OR USER, TO CONSULT LEGAL COUNSEL FOR THE INTERPRETATION OF ANY LAWS APPLICABLE TO THE AREA OF INTENDED USE OF THESE PRODUCTS.

## Quick Start Guide

### System Requirements

PC only, software is not Mac compatible at this time

Windows XP or Vista

Pentium 4 processor or better

512mb RAM

600mb hard drive space

High speed internet connection (For Google Earth<sup>®</sup> use)

USB 2.0 connection

If the Tracking Key does not fit securely in your USB port, (port is recessed) you may need to purchase an USB Extension Cable (not supplied by LandAirSea)

### Past Track Software Installation

The following instructions are for **Windows XP/Vista/7** installation.

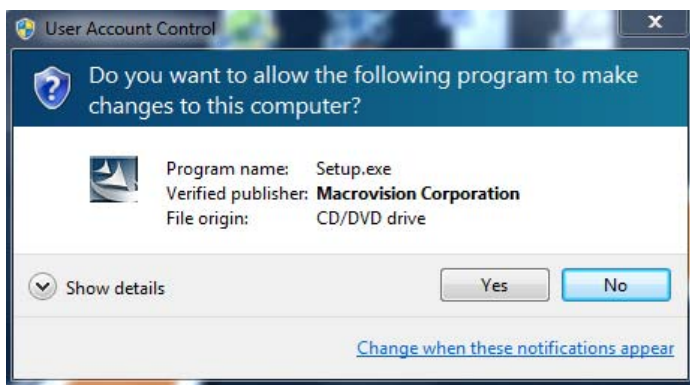
Note: Customers outside the 50 United States and Puerto Rico will not have access to the digital street maps. Therefore, international customers will need to use Google Earth<sup>®</sup> as their mapping engine. U.S. customers, who can also use Google Earth, can also choose this option if they want to reduce the program size on their computer.

Install the Past Track software **BEFORE** connecting your Tracking **Key/Pro<sup>®</sup>** to the computer.

You must follow these instructions exactly. If you do not, your GPS device will not download correctly.

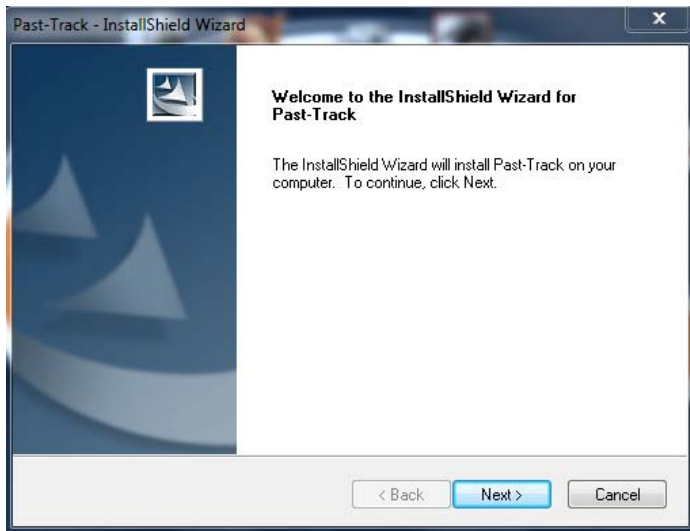
1. Insert the Past Track CD that came with your GPS device into your CD/DVD drive. The software installation program will start automatically.

The following User Account Control screen will display on Windows Vista and Windows 7 computers. This is normal. Past Track will install the mapping system and GPS device drivers on your computer. This will not harm your computer in any way. Choose 'Yes'.

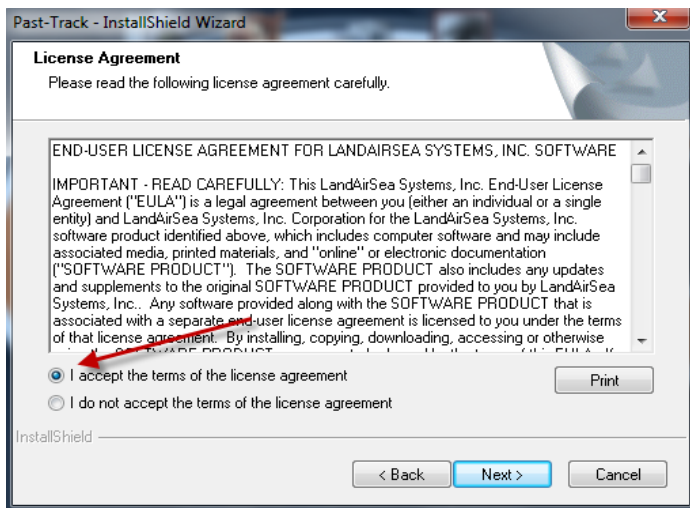


# LandAirSea Tracking Key/Pro<sup>®</sup> User Guide

2. The Install Shield Wizard screen will display to start the installation. Choose 'Next'.

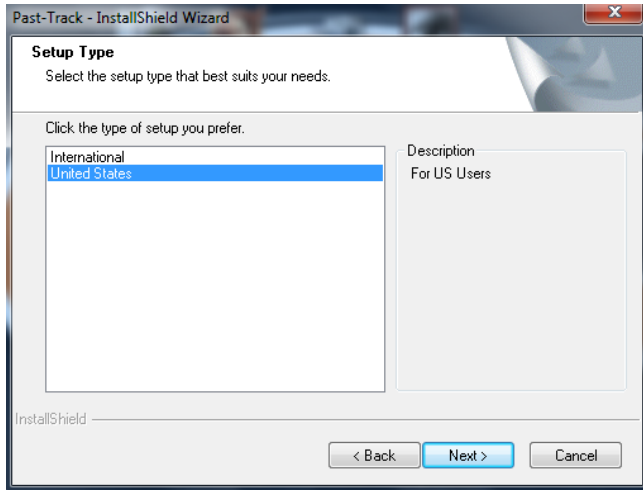


3. Read and accept the License Agreement. Choose 'Next'

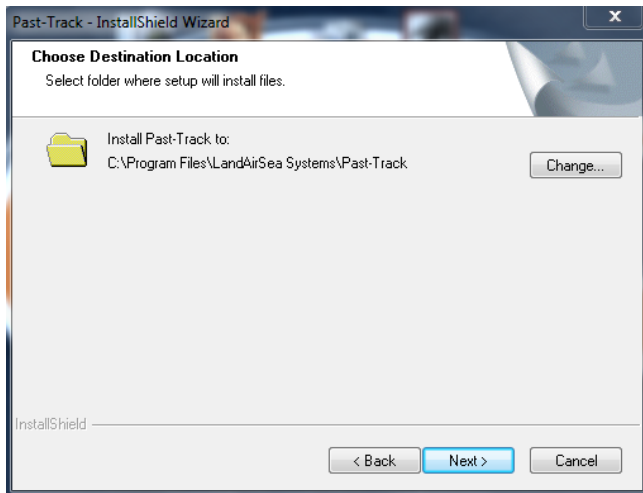


4. Choose the setup type which best suits your needs. For all users outside of the United States, choose International. You can use the Street Maps module of Past Track or Google Earth<sup>®</sup> if you are logging data in the United States. If you are using the device outside of the U.S., choose International and use Google Earth<sup>®</sup> (download instructions on page 12) for viewing your tracking data. Choose 'Next'.

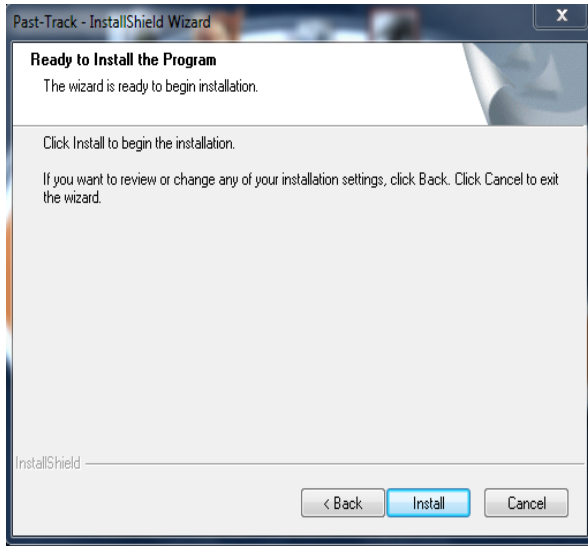
# LandAirSea Tracking Key/Pro<sup>®</sup> User Guide



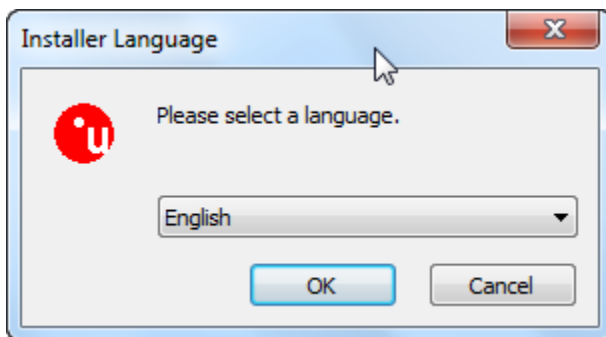
5. Select where you want to install the software. The default recommended path is:  
C:/Program Files/LandAirSea Systems/Past Track



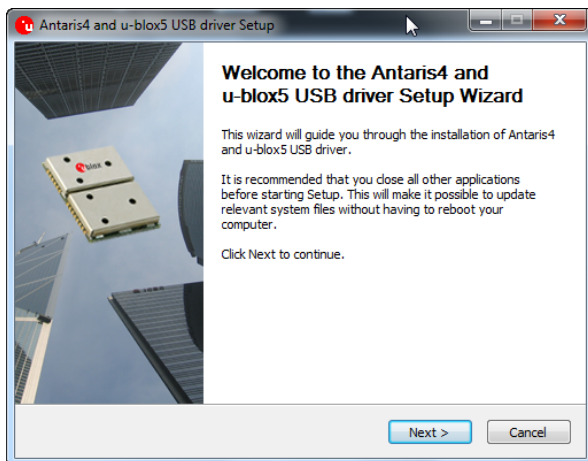
6. Click 'Install' to start the program installation. Install Shield will install Past Track.



7. Next the u-blox device driver installation will begin. Choose your Language.



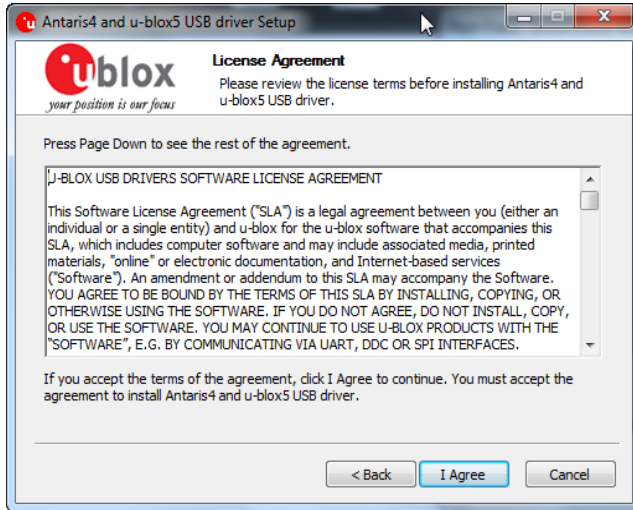
8. The Antaris4/u-blox5 device driver setup will begin. Choose 'Next'.



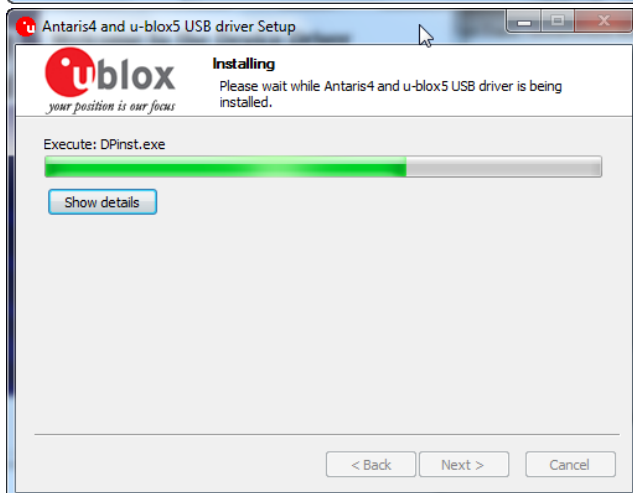
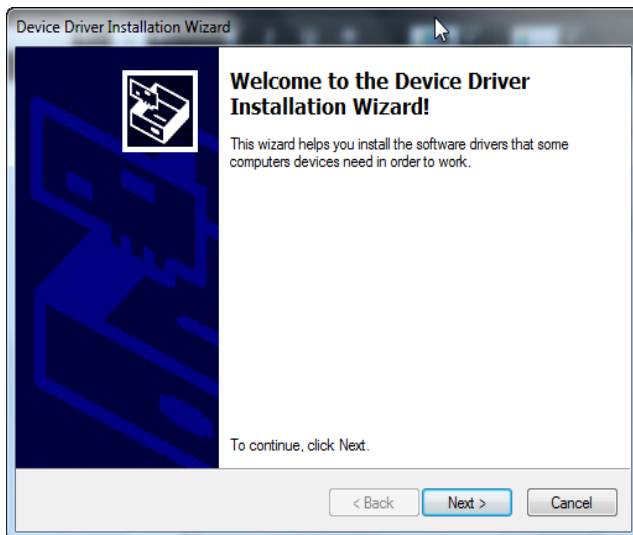


# LandAirSea Tracking Key/Pro<sup>®</sup> User Guide

9. Choose 'I Agree' for the u-blox license agreement.

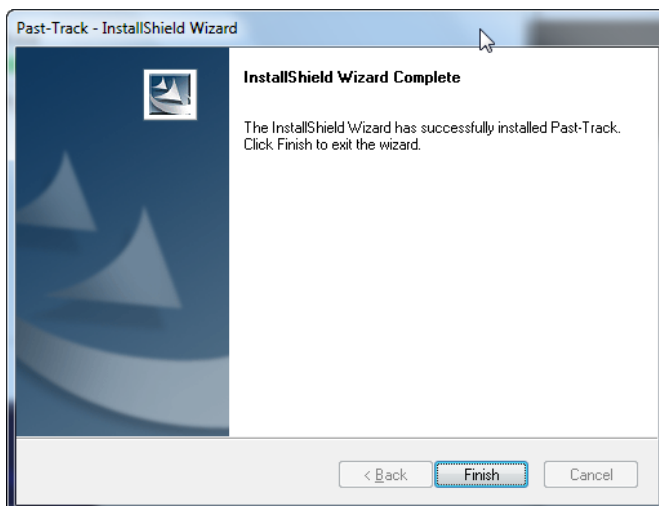
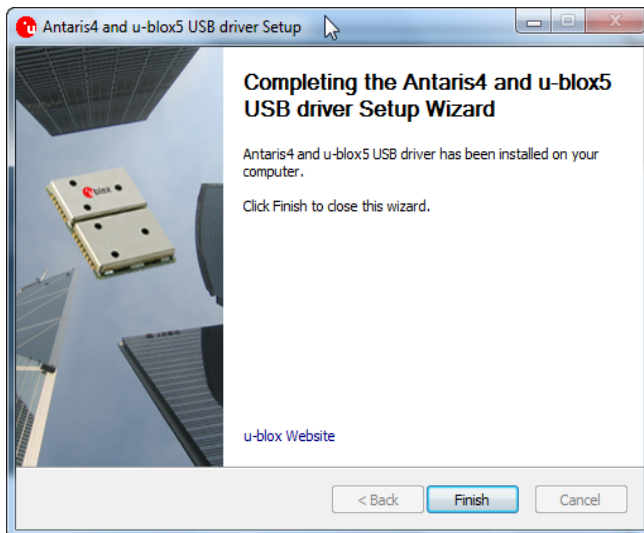
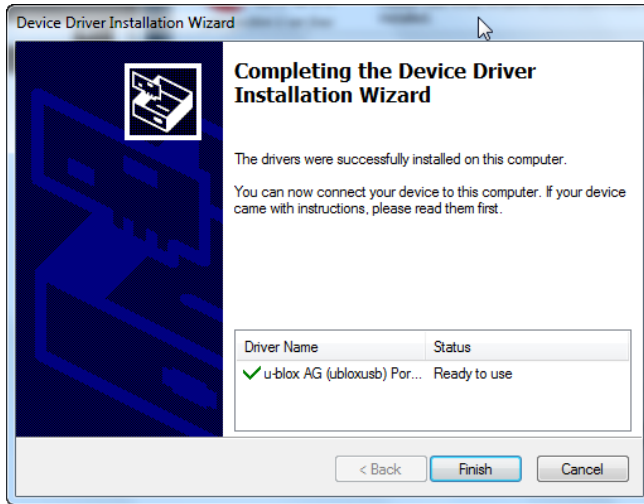


10. The Device Driver Installation Wizard will start. Choose 'Next'.



# LandAirSea Tracking Key/Pro<sup>®</sup> User Guide

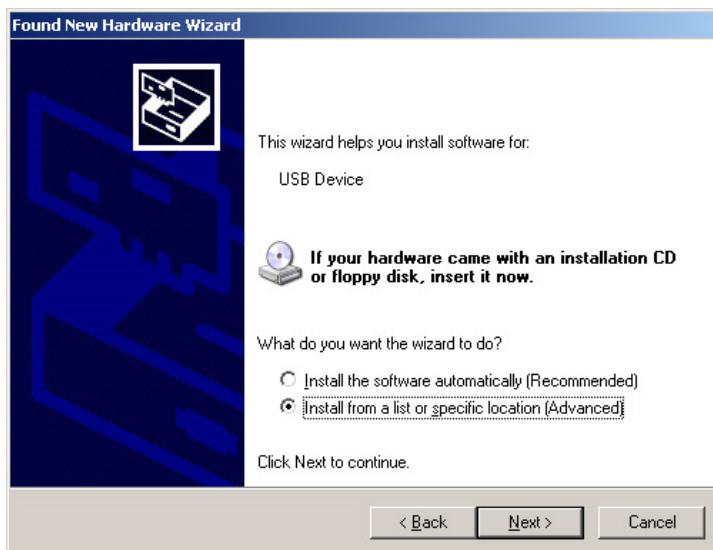
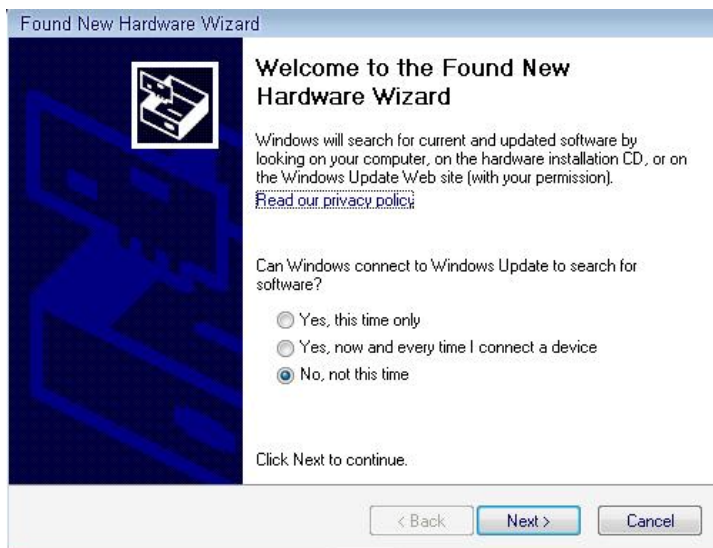
11. To complete the Past Track software and driver installation, choose 'Finish' on all three screens below.



## Connecting the Tracking Key/Pro<sup>®</sup> to your computer

1. Ensure that you have the LandAirSea Past Track CD in your CD/DVD drive.
2. Place fresh batteries in your GPS device and plug it in to your USB port.
3. On most computers, the device drivers will install seamlessly in the background during the Past Track software installation and your device will be recognized by Windows upon plugging it into your USB port. Computers that do not have Windows Update enabled will display the Found New Hardware wizard upon plugging the device into the USB port. If the New Hardware Wizard does pop up, follow the instructions below. Windows Vista and 7 will run Windows update and will silently search and install the driver that works best with your device.

### New Hardware Wizard for Windows XP




4. Choose the drive letter of your CD/DVD drive with the installation disk and click 'Next'.

## Google Earth<sup>®</sup> download and installation instructions




1. Go to [www.earth.google.com](http://www.earth.google.com) and download Google Earth<sup>®</sup>.

Google Earth | Free



Google Earth lets you fly anywhere on Earth to view satellite imagery, maps, terrain, [3D buildings](#), from galaxies in outer space to the canyons of the ocean. You can explore rich geographical content, save your toured places, and share with others.

**Google Earth 5 features:**

-  Historical imagery from around the globe
-  Ocean floor and surface data from marine experts
-  Simplified touring with audio and voice recording

[Download Google Earth 5](#)

The world's geographic information at your fingertips.

**New!** Google Model Your Town [Competition](#).

2. Agree to the software license on the download page and download.

By installing, you agree to [Google Earth's Privacy Policy](#).

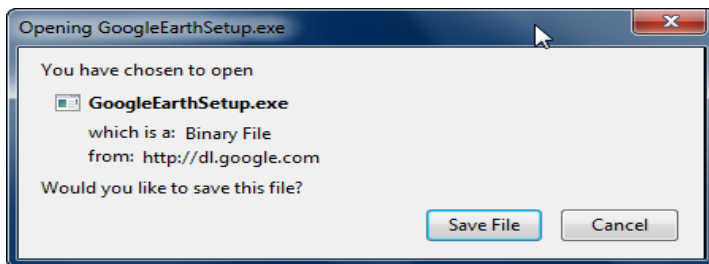
**Google Maps/Earth Terms of Service**

By downloading, installing, or using the Google Earth software, accessing or using the Google Maps service (together, the "Products" or "Services"), or accessing or using any of the content available within the Products, you agree to be bound by the following: (1) the [Google Terms of Service](#) (the "Universal Terms"); (2) the terms found on our [Legal Notices](#) page (the "Legal Notices"); and (3) the additional terms and conditions set forth below (the "Additional

Help us improve this software by allowing us to collect anonymous usage statistics

[Agree and Download](#) [Cancel](#)

3. Save the download file.



4. After GoogleEarthSetup.exe file has downloaded, open it and run the Google Earth<sup>®</sup> installation program.

# LandAirSea Tracking Key/Pro<sup>®</sup> User Guide

---

## Features of the LandAirSea GPS Tracking Key<sup>®</sup>:

- Pocket-size design
- GPS tracking accuracy of 2.5 meters
- 16 channel GPS receiver can be placed in, on, or under the vehicle with strong magnet mounting
- Logs the driving speed, every second. Shows you the maximum speed driven for the day.
- Logs location, date, and time of every stop.
- Fast USB download. The Tracking key plugs right into your computer.
- Data is compatible with the popular Google Earth<sup>®</sup>.
- Software animates the vehicle driving over a digital street map.
- Create an easy to read text report
- Runs on just 2 AAA batteries
- Low battery indicator
- Average battery life of 2 weeks with standard alkaline batteries, 2.5 weeks with lithium batteries. Battery life depends on hours driven per day. Above calculations are determined with 2 hours of driving per day.
- No monthly fees
- 12 month Manufacturer Warranty



Note: There is no on/off switch on the LandAirSea Tracking Key. Once you place batteries in the unit the system will be on and ready to track. For long storage periods it is recommended that you remove the batteries from your unit. Otherwise after 3 minutes your system will go into a low power sleep mode.

# LandAirSea Tracking Key/Pro® User Guide

---

## The GPS Tracking Key Pro® Features:

- Superior GPS reception
- No monthly fees
- Records route, speed, direction and stops every second
- Runs on just two (2) AA batteries (alkaline or lithium)
- Easy-access battery compartment
- On/off switch
- Up to 100 hours of flash memory
- Included software allows 3 options for data viewing
- Water-resistant
- Compact and lightweight for covert placement
- Powerful magnet for easy installation, inside or outside vehicle
- Motion-activated; enters sleep mode after 2 minutes of inactivity
- Optional 12-volt accessory cable
- Free technical support from domestic-based LAS representatives
- 12 month Manufacturer Warranty



Note: The Tracking Key Pro® includes an on/off switch. It still has the motion sensor so it can be left in the ON position after placement. Once you place batteries in the unit the system will be on and ready to track. After 2 minutes your device will go into a low power sleep mode.

# LandAirSea Tracking Key/Pro<sup>®</sup> User Guide

## Read before using Key/Tracking Key Pro<sup>®</sup>

**KNOW HOW GPS WORKS.** The Tracking Key/Tracking Key Pro uses GPS to find its location. In order to lock onto the location, the GPS unit must have a direct line of sight to 3 locations in the sky and these locations are changing constantly throughout the day. Make sure that there isn't any metal completely blocking this upward / outward line of sight. GPS signals will go through plastic, glass, rubber, fiberglass, cloth material, or anything else not made of metal. The more metal obstructions that are above and around the GPS sensor the longer it will take to lock onto the location. Make sure you choose a good location to place the unit or antenna for good results. An example of placement for the Tracking Key is the glove box but depending on the design of the vehicle, it may take longer to lock onto the location. If the glove box is very low inside the vehicle with a lot of obstructions, it may not be able to track. In this case you will have to find a better location to place the GPS unit.

**TAKE A TEST DRIVE (VERY IMPORTANT).** Take the unit for a test run with the GPS unit on your dashboard for at least a few miles. Make sure to wait for the GPS light to start flashing (this will take 1 to 2 minutes after replacing batteries). This is an indication that the unit is working properly. After 2 minutes of inactivity, the unit will go into a very low power mode which will not drain the batteries. Now download your test data by following the Quick Start Guide for Downloading Data.

**Please Note:** Do not put additional stress on the magnet mount by pulling straight from a metal surface. You should gently tilt the unit by pulling away from the metal near the USB cap which will easily release the magnet from the metal contact. Removing the unit this way will avoid damage.

### Unit Placement

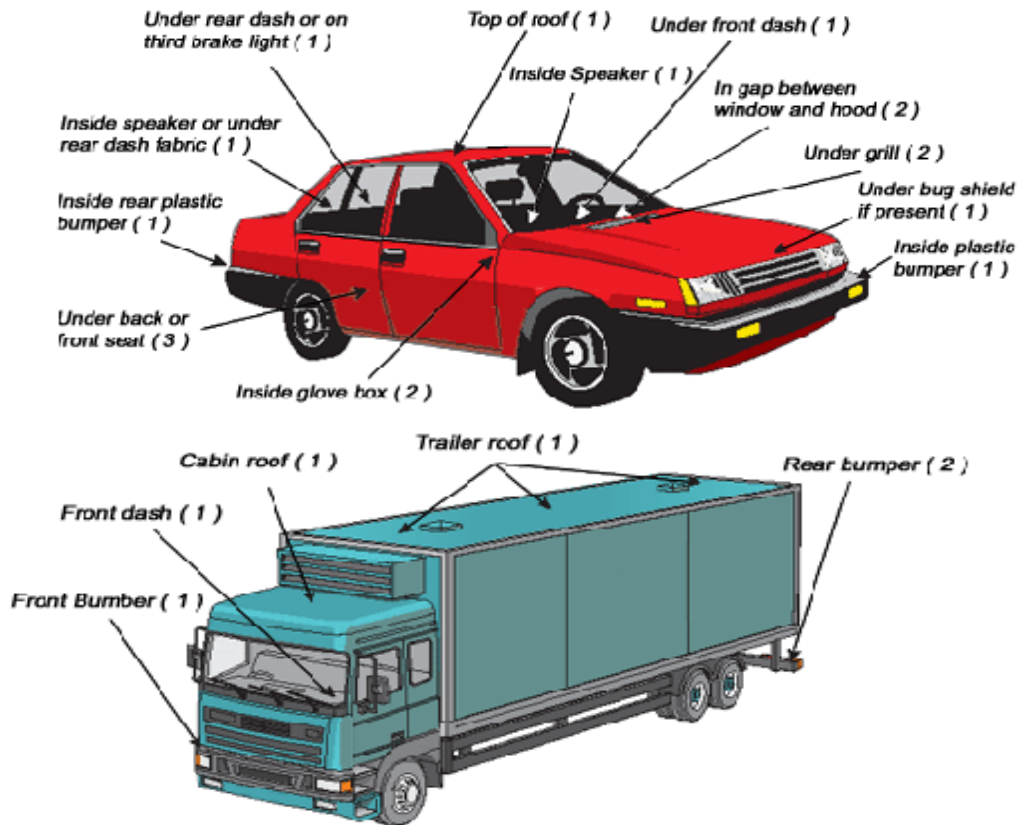
| Location                              | Effectiveness | Comment  |
|---------------------------------------|---------------|--|
| On the front or rear dash board       | 99%           | Probably one of the best locations to keep your unit if you do not need to conceal the device. You can place the unit in a box of tissues or in something on the dash.   |
| Under the front or rear dash board    | 95%           | It is important to remember that the unit must be high enough up in the dash board to make an effective lock. Spotty data will indicate that your placement may need to be adjusted.   |
| In the glove box                      | 80-95%        | This is good location to keep your unit. Effectiveness may vary from one vehicle to another, but if placed properly it should work in the glove box of almost any vehicle.   |
| Under or on the seat or under vehicle | 85%           | Placement under the seat of vehicle will vary from vehicle to vehicle. If you must place the unit under the seat or the vehicle, make sure you test it for a day or two to make sure it will work in your vehicle in the location you have chosen. |



# LandAirSea Tracking Key/Pro<sup>®</sup> User Guide

## GPS ANTENNA PLACEMENT CHART

GPS accuracy is dependent upon proper placement of the Tracking Key. Optimum performance is achieved when the antenna has a view of the satellite without metal obstructions. The signal will usually be sufficient through plastic, fiberglass, carpet, cardboard, or glass. Taking a few extra minutes to locate the best location for the antenna will reward you with the best possible tracking data.



**(1)** We highly recommend these locations for GPS antenna placement. Best overall performance and superior signal reception for optimum accuracy.

**(2)** Signal reception may not be as accurate or favorable. This location may not provide the accuracy that location (1) will.

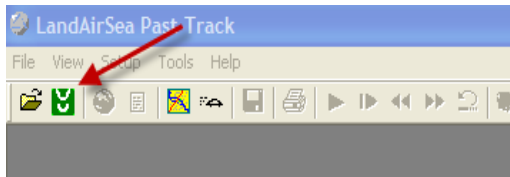
**(3)** Recommended only when other locations or options do not exist.



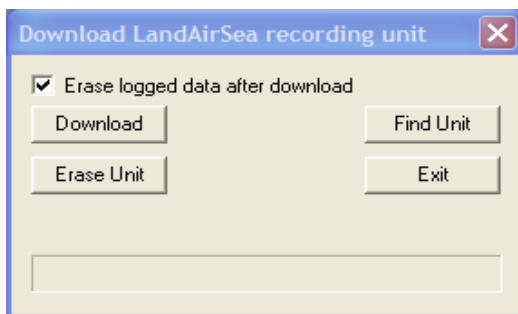
## Using Past Track Software

### DOWNLOADING DATA FROM YOUR GPS DEVICE TO PAST TRACK

1. Install the Past Track software using the disk that came with your device.
2. Insert the GPS device into the USB port of your computer.
3. Open Past Track. The Past Track screen will be gray and many of its icons grayed-out until you download data.
4. Click on the Download Button.

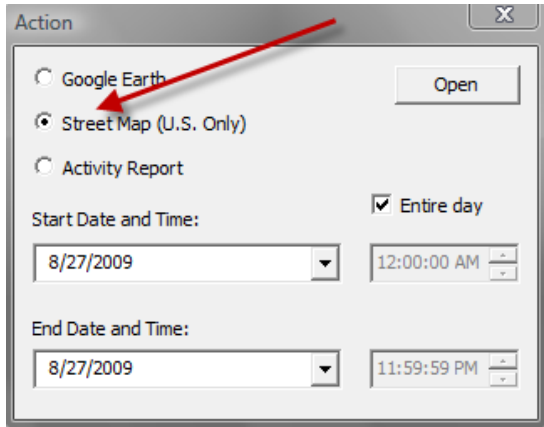


5. The Download dialog box will open



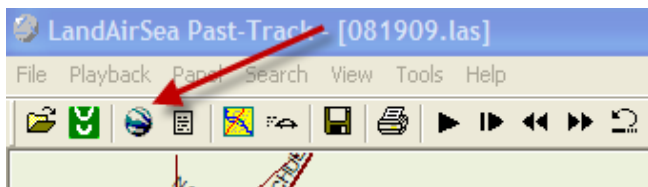
6. Click on 'Find Unit'
7. After the device is found, click on Download, the device will begin to download.
8. Past Track will ask you to 'Save' the file after it has downloaded. The default location for saving files is My Documents.
9. After you have saved the file, the Action screen will open and you will have three choices. Choose Street Maps to open the data to view the track of your vehicle in our maps.

## LandAirSea Tracking Key/Pro® User Guide



The path of your vehicle will now be displayed in Street Maps. You can choose 'Hide' to hide your calendar for better viewing.

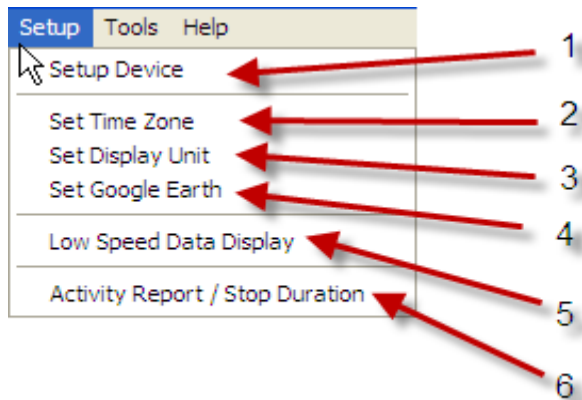
You can also create an Activity Report from this screen if you want to bypass viewing your data in maps and create a text version of your route by choosing Activity Report instead of Street Maps in the Action Screen. You can also open the data directly into Google Earth®. However, we recommend opening the download first in Street Maps (U.S. users) because you will have access to Google Earth® and the activity report as shown in the toolbar below once the data file is opened in this mode.



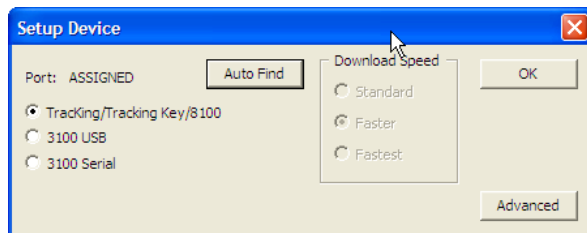
# LandAirSea Tracking Key/Pro<sup>®</sup> User Guide

## PAST TRACK SETUP MENU

From the Past Track Setup Menu you can change various parameters regarding the operation of our software and devices. The Setup Menu is displayed when Past Track first opens. It will not be visible once you have downloaded data into Street Maps.

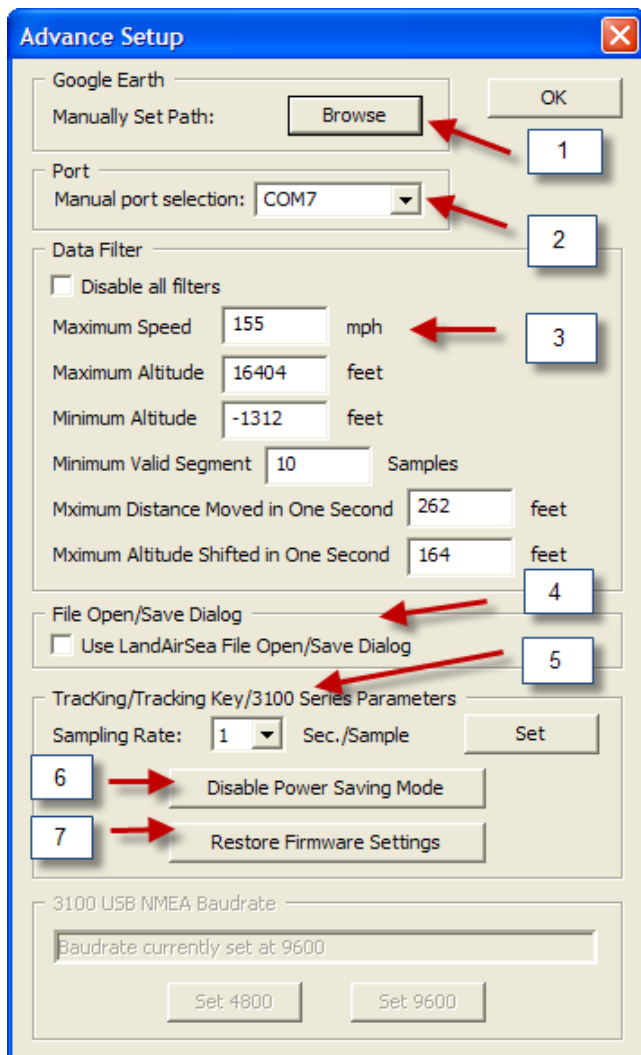


### Setup Device (1)



- **Tracking/Tracking Key/8100** – Always choose this radio button to download/setup your **Key/Pro<sup>®</sup>**.
- **Auto Find**- This button will find the **Key/Pro<sup>®</sup>** Com port. Past Track uses this feature to recognize your device.
- **Advanced** (See Next Page)

# LandAirSea Tracking Key/Pro<sup>®</sup> User Guide



1 If you choose to install Google Earth<sup>®</sup> in another folder location on your computer, other than the default location. You can manually set the connection path to Past Track.

2 Set the port selection for your GPS device. This is done automatically in the Past Track program, but you can set the port for troubleshooting purposes.

3 Set data filters for your individual needs. You can change the various filters for your device if necessary, but it is best to leave the default settings.

4 File Open/Save dialog. This setting is also used for troubleshooting and is best left unchecked.

5 You can set the sampling rate at which your GPS device records data. Default is 1 second. Maximum sampling rate is 5 seconds.

6 In Power Saving Mode, our GPS device goes to sleep after 2 minutes to extend battery life. You can disable Power Saving mode if you would like your device to record continuously. NOTE: Disabling the power saving mode will drastically reduce the battery life as the device will no longer go to sleep.

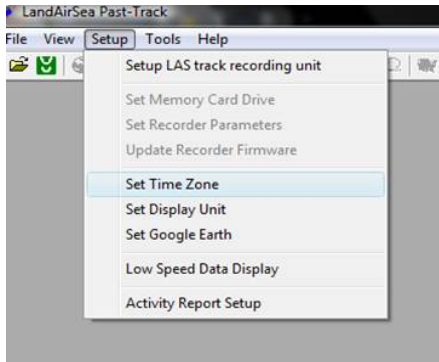
7. Restores all Firmware Settings to original factory settings.

# LandAirSea Tracking Key/Pro<sup>®</sup> User Guide

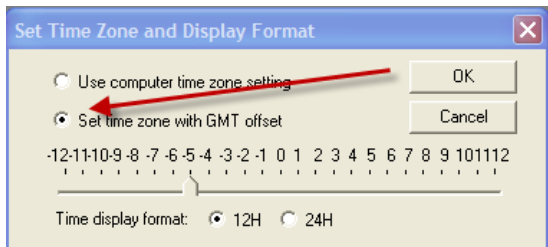
## Set Time Zone (2)

For some users the Activity Report of the Tracking Key will not match the local time zone. To fix this, set GMT time zone offset.

In Past-Track, in the program menu, click on Setup and select 'Set Time Zone'



The Set Time Zone and Display Format screen will open. Select 'Set time zone with GMT offset' and slide the pointer back or forward to adjust the time to meet your local time zone.

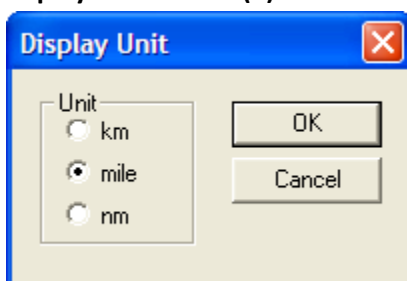


Use the chart on the next page to determine which setting the time should be set.

## LandAirSea Tracking Key/Pro® User Guide

| Time Zone in United States | Examples of places in United States using these Time Zones  | GMT Offset Standard Time | GMT offset using Daylight Saving Time |
|----------------------------|---|--------------------------|---------------------------------------|
| Atlantic                   | Puerto Rico, US Virgin Islands  | GMT - 4h                 | n/a                                   |
| Eastern                    | Connecticut, Delaware, Florida, Georgia, part of Indiana, part of Kentucky, Maine, Maryland, Massachusetts, Michigan, New Hampshire, New Jersey, New York, North Carolina, Ohio, Pennsylvania, Rhode Island, South Carolina, part of Tennessee, Vermont, Virginia and West Virginia | GMT - 5h                 | GMT - 4h                              |
| Central                    | Alabama, Arkansas, Florida, Illinois, part of Indiana, Iowa, part of Kansas, part of Kentucky, Louisiana, part of Michigan, Minnesota, Mississippi, Missouri, Nebraska, North Dakota, Oklahoma, part of South Dakota, part of Tennessee, most of Texas, and Wisconsin               | GMT - 6h                 | GMT - 5h                              |
| Mountain                   | Arizona*, Colorado, part of Idaho, part of Kansas, Montana, part of Nebraska, New Mexico, part of North Dakota, part of Oregon, part of South Dakota, part of Texas, Utah, and Wyoming  | GMT - 7h                 | GMT - 6h<br>* n/a for Arizona         |
| Pacific                    | California, part of Idaho, Nevada, most of Oregon, Washington   | GMT - 8h                 | GMT - 7h                              |
| Alaskan                    | Alaska  | GMT - 9                  | GMT - 8                               |
| Hawaiian                   | Hawaii  | GMT - 10                 | n/a                                   |

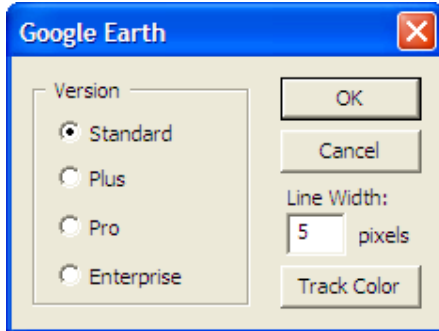
### Set Display Unit (3)



Setup reports to display in kilometers, miles or nautical miles.

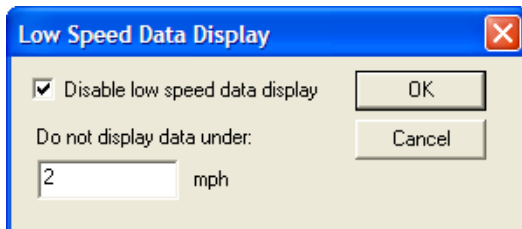
## Set Google Earth<sup>®</sup> (4)

In the Set Google Earth<sup>®</sup> setup menu you can set Google Earth<sup>®</sup> version (default is Standard DO NOT change this). You can also set tracking line width in pixels and set the color of the tracking line shown in Google Earth<sup>®</sup>.



## Low Speed Data Display (5)

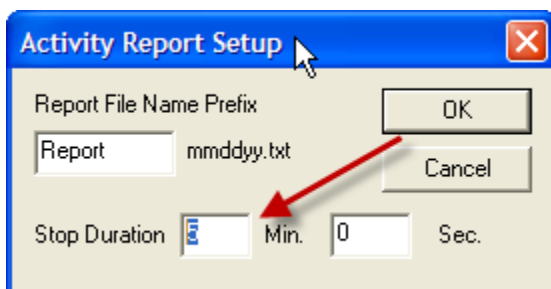
Past Track will not display data if your vehicle is traveling under 2 miles per hour. This is the default, if you want to change this setting or disable it, you can do that in this screen.



## Activity Report Setup (6)

In this screen you can set up the default naming of the file that is saved to create the Activity Report. Your GPS device is setup to record stops of 4 minutes or more. A stop will not display in reports unless it is 4 minutes or more. If you would like to change the stop duration of stops that are displayed in reports, follow the instructions below. Please note that older versions of Past Track may have the default setting as 10 minutes. This can be changed and are identified within this section

In the Stop Duration field of the Activity Report setup screen, set the time you would like for your GPS device to be stationary in order to register a stop.



Choose 'Ok' and your reports will now display stops at the time that you have set.

# LandAirSea Tracking Key/Pro® User Guide

## SETTING LINE COLOR IN PAST TRACK SOFTWARE (STREET MAPS)

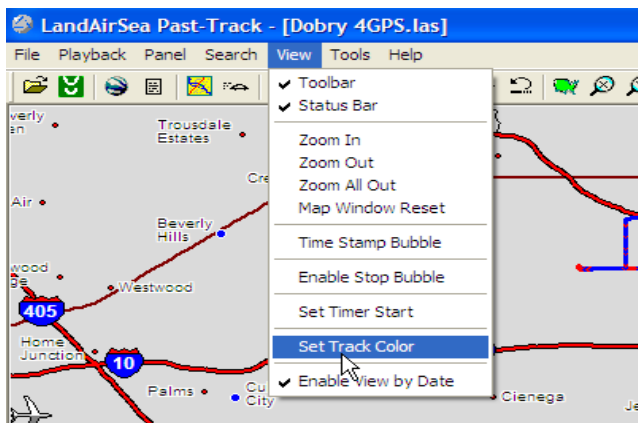
The digital street map will display the route traveled in varying colors breaking down the speeds traveled. This will allow the isolation of speeds throughout the trip. Colors and speed ranges can be set by the user in this utility. The default colors are:

- Normal Track = Cyan
- Speed under 20mph = Red
- Speed over 60mph= Black

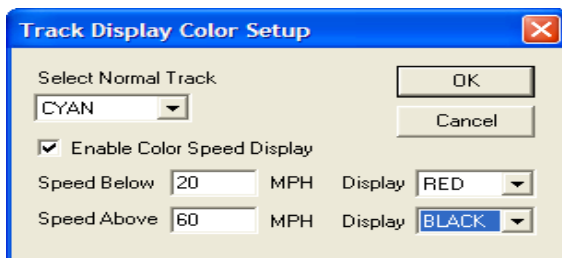
You can set the line colors and the speeds they represent by following the instructions below.

With data downloaded in Street Maps:

In the Past Track menu, go to View/Set Track Color.



The Track Display Color Setup screen will open. From here you can set the track color and speed.



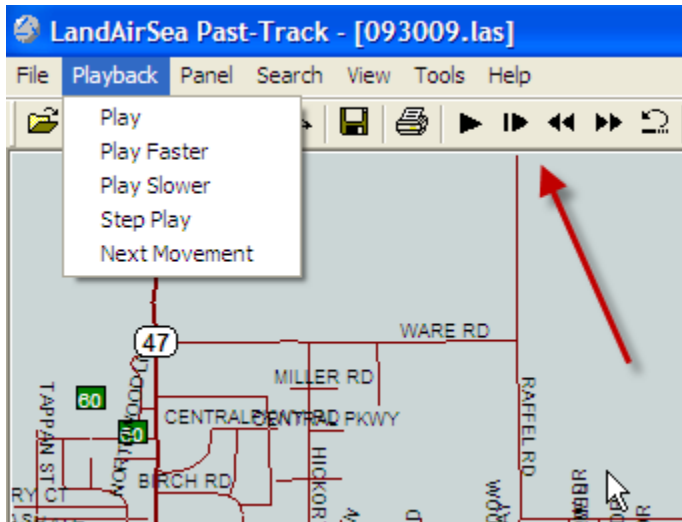


# LandAirSea Tracking Key/Pro<sup>®</sup> User Guide

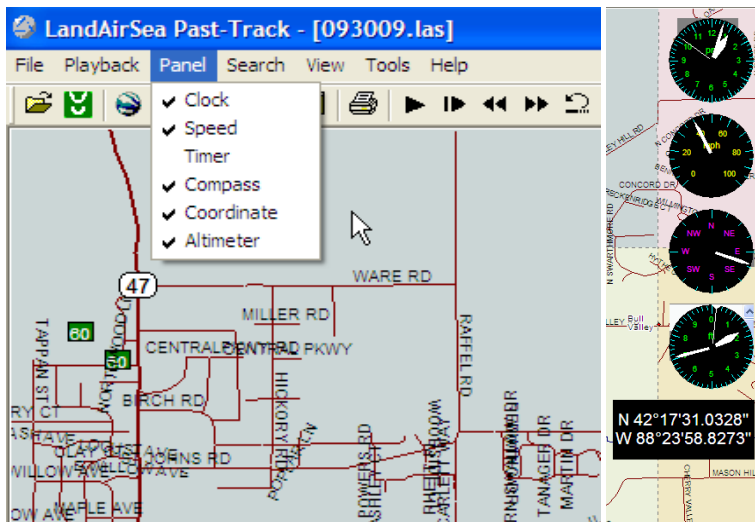
## STREET MAPS MENUS

The following menus are available and displayed only after there is downloaded data in Street Maps.

**Playback Menu** – With this menu, you can choose the various modes of animation playback for the small car on the screen. You can also use the arrows in the icon bar to play the animation.

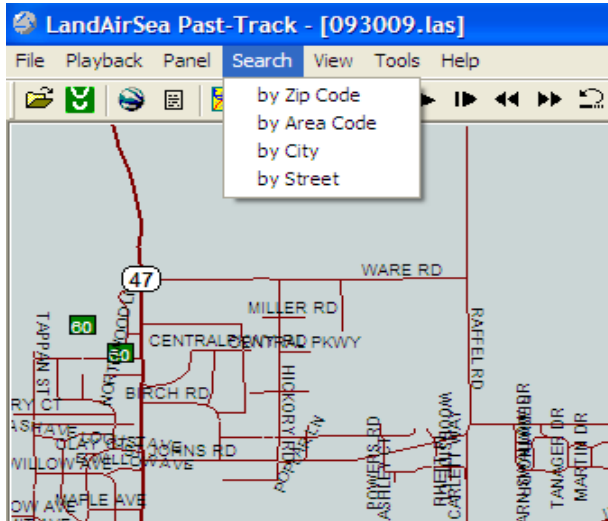


**Panel Menu** – Check any of the items listed in the Panel Menu and that item will display in the right side of the Street Maps screen.

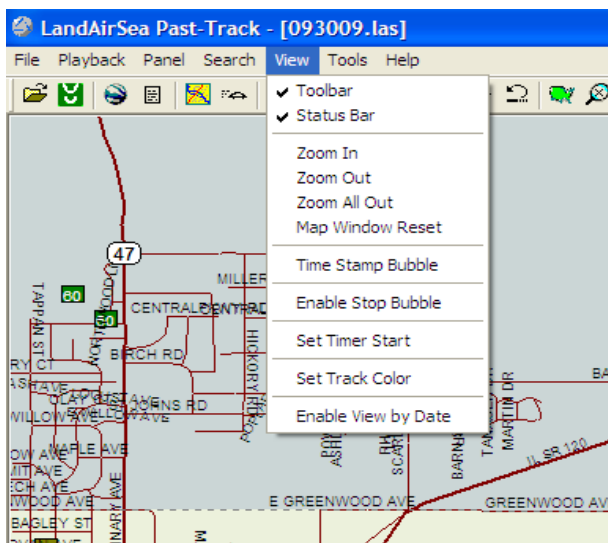


# LandAirSea Tracking Key/Pro<sup>®</sup> User Guide

**Search Menu** – You can search the map area by the criteria in this menu.



**View Menu**



- **Zoom In** - This allows you to zoom in to the map for closer viewing.
- **Zoom Out** - Allow the viewer to zoom out in increments.
- **Zoom All Out** - allows you to view the map in its entirety. It will zoom out of any position to fix on a view of the entire map.
- **Map Reset** – Resets map to original position.
- **Time Stamp Bubble** - Allows you to view all major stopping points that were recorded and the time for each.
- **Enable Stop Bubble** - Allows you to view what the Beginning and END (not stop) positions are, as well as what time and date those positions were taken.
- **Set Track Color** – Allows user to set the color of the track of the vehicle.
- **Enable View by Date**- Allows the user the view a specific date within the downloaded data.

# LandAirSea Tracking Key/Pro<sup>®</sup> User Guide

## GUIDE TO THE MEANING OF ICONS IN PAST TRACK SOFTWARE

This easy to follow guide will help you better understand the icons and options that are offered to you on the LandAirSea Past Track software.



The graphic above is our basic toolbar. You will notice that all the icons are available for use and are not ghosted out. This toolbar becomes completely accessible only after have downloaded tracking data you are using Streets and Maps (U.S. only) to view your information.

As you can see this toolbar has been numbered. There is a different icon for each number and their set.

- ✚ **Icon 1 is a basic 'Open File' icon.** You will select this icon when you want to find a file that has previously been saved after a download. When going to view information from a saved file, select this icon and it will bring you directly to the default save folder.
  
- ✚ **Icon 2 is the 'Download' icon.** You will select this icon for your download station which allows you four options. You will have the option to "Find Port," "Download," "Erase Unit," or "Exit." Find Port lets you find the device. Download allows you to transfer the information onto your computer. Erase Unit allows you to clear your device from any data, and Exit simply closes the prompt.
  
- ✚ **Icon 3 is the "Google Earth<sup>®</sup>" icon.** When you select this icon, it will convert your GPS tracking information into a viewable format on Google Earth<sup>®</sup>. It will allow you access to the free roam mapping that Google Earth<sup>®</sup> offers.
  
- ✚ **Icon 4 is the "Activity Report" icon.** This icon will allow you to view your tracking information in a written text version. It will give you details such as location arrived, departure and arrival times, stop durations, and total driving times, as well as the top speed.
  
- ✚ **Icon 5 is the "Area" icon.** You will select this only when you want to choose which area of the United States map you want to look at. Areas include Northeast, Southeast, Northwest, Southwest, C-North (Central North), and C-South (Central South).
  
- ✚ **Icon 6 is the "Navigate" icon.** You can use this icon when the device is connected to a mobile computer source and track the current position that you are driving. This icon is useful when locating where you are in relation to other roads, stops, or towns.

# LandAirSea Tracking Key/Pro<sup>®</sup> User Guide

---

- ✚ **Icon 7 is the “Save” icon.** This icon, when activated, will allow you to save the data that you are viewing to a default save location. You may change this save location as long as it is within the My Documents folder.
  
- ✚ **Icon 8 is the “Print” icon.** You will be able to print the map that you are looking at as well as the tracking information displayed on it. As soon as you select this icon, a command will be sent to print.
  
- ✚ **Icons 9A-E are your Play by Play Options.**
  - A is the “Play” icon. This icon, when activated, will start the small car on the screen to move. It will follow along the path that was set by the information downloaded from your tracker.
  - B is the “Pause/Step” icon. This icon, when activated, will pause the progress of the play by play and will also allow you (once pressed again) to move on to the next step on the play by play.
  - C is the “Slower” icon, not the rewind icon. This icon when activated will slow the speed of the play by play in half. This will happen every time it is pressed. If you press it twice, it is now four times slower than it was originally.
  - D is the “Faster” icon, also known as Fast Forward. This icon, when activated, will double the speed of the play by play. This will happen every time it is pressed. If you press it twice, it is now four times faster than it was originally.
  - E is the “Reset” icon. This icon, when activated, will reset the play by play to the starting position and allow it to play from the beginning.
  
- ✚ **Icons 10A-G are your Map Viewing Options.**
  - A is the “Zoom All Out” icon. This allows you to view the map in its entirety. It will zoom out of any position to fix on a view of the entire map.
  - B is the “Zoom In” icon. This allows you to zoom in to the map for closer viewing.
  - C is the “Zoom Out” icon. This allows you zoom out of the map for farther viewing.
  - D-G are the “Pan...” icons. They allow you to pan the map in one of four cardinal directions. The arrow facing left allows you to pan West, the arrow facing right allows you to pan East. The arrow facing up North, and the arrow facing down South.
  
- ✚ **Icon 11 is the “Time Stamp” icon.** This icon will allow you to view all major stopping points that were recorded and the time for each.
  
- ✚ **Icon 12 is the “Interval” icon.** This icon will allow you to view how much time has passed between two points. Simply click this icon when you want to see how much time has passed between the designated start and stop points.

## LandAirSea Tracking Key/Pro<sup>®</sup> User Guide

---

- ✚ **Icon 13 is the “Stops” icon.** Not to be confused with the Time Stamp icon, this icon allows you to view what the Beginning and END (not stop) positions are, as well as what time and date those positions were taken.
  
- ✚ **Icon 14 is the “Distance” icon.** This icon allows you to view the distance covered, duration, and average speed of the trip as well as the date and time of the end position.

# LandAirSea Tracking Key/Pro<sup>®</sup> User Guide

## VIEWING TRACKING DATA IN GOOGLE EARTH<sup>®</sup>

- Step 1 Open or download tracking data from your Tracking Key/Tracking Key Pro unit using the Past Track software.
- Step 2 In the icon bar at the top of the screen, click the icon denoted with a globe (Third Button).
- Step 3 Google Earth will now automatically launch and your tracking information will be displayed. HINT: MAKE SURE YOU PUT A CHECK IN THE BOX NEXT TO "ROADS" IN THE LAYERS WINDOW LOCATED IN THE SIDEBAR.



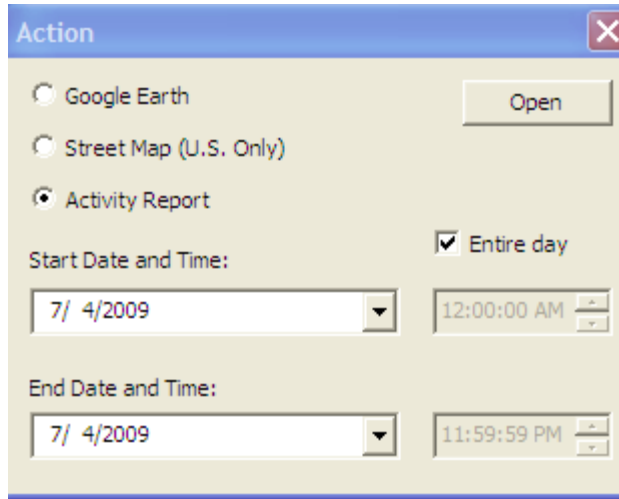
Once displayed, the path and stops are clearly identified



# LandAirSea Tracking Key/Pro® User Guide

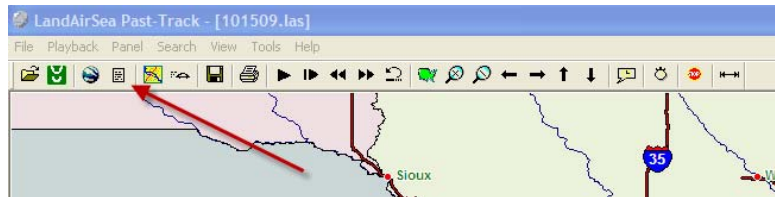
## CREATING AN ACTIVITY REPORT IN PAST TRACK

You can create an activity report either by choosing Activity Report to open the data in the Action Screen after saving the file, or

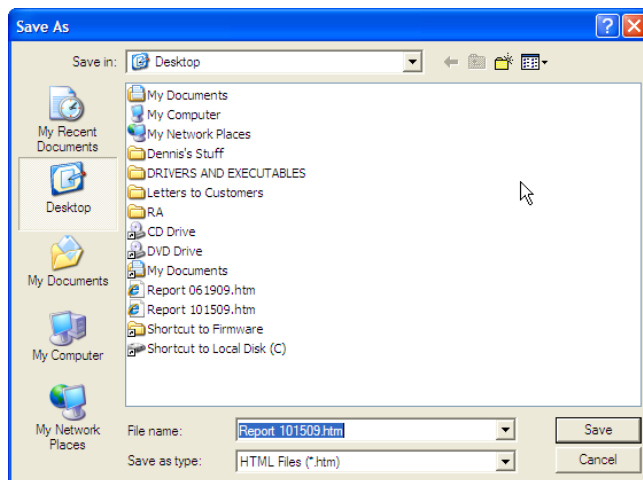


*User can also uncheck the 'Entire Day' box to isolate specific times of the day to track.*

You can also choose to open the data using Street Map and then create an Activity Report using the Activity Report Icon in Street Maps.



Past Track will display the 'Save As' menu. Save the report and the report will generate.



# LandAirSea Tracking Key/Pro® User Guide

Past Track will generate and display the Activity Report spanning the date range the device was left on the vehicle. This report provides a summary of each day's activity. This summary includes the starting address for the day (1), final destination address for the day (2), total driving time traveled (3), total miles driven (4), and maximum speed recorded that day (5). This report will display destination addresses as web links (6). These links can be clicked which then opens a satellite image of that location on Google Maps (7).

**Daily Driving Report**  
Date Span : Thursday, October 15, 2009 ~ Friday, October 16, 2009

**Thursday, October 15, 2009**  
Departed From : [2098 DUNCAN PL, WOODSTOCK, IL 60098](#) ← 1  
Arrived At : [GALLOWAY DR, WOODSTOCK, IL 60098](#) ← 2  
Total Driving Time : 45 minutes, 35 seconds ← 3  
Total Mileage Driven : 21.8 miles ← 4  
Maximum Speed : 82.6 mph ← 5

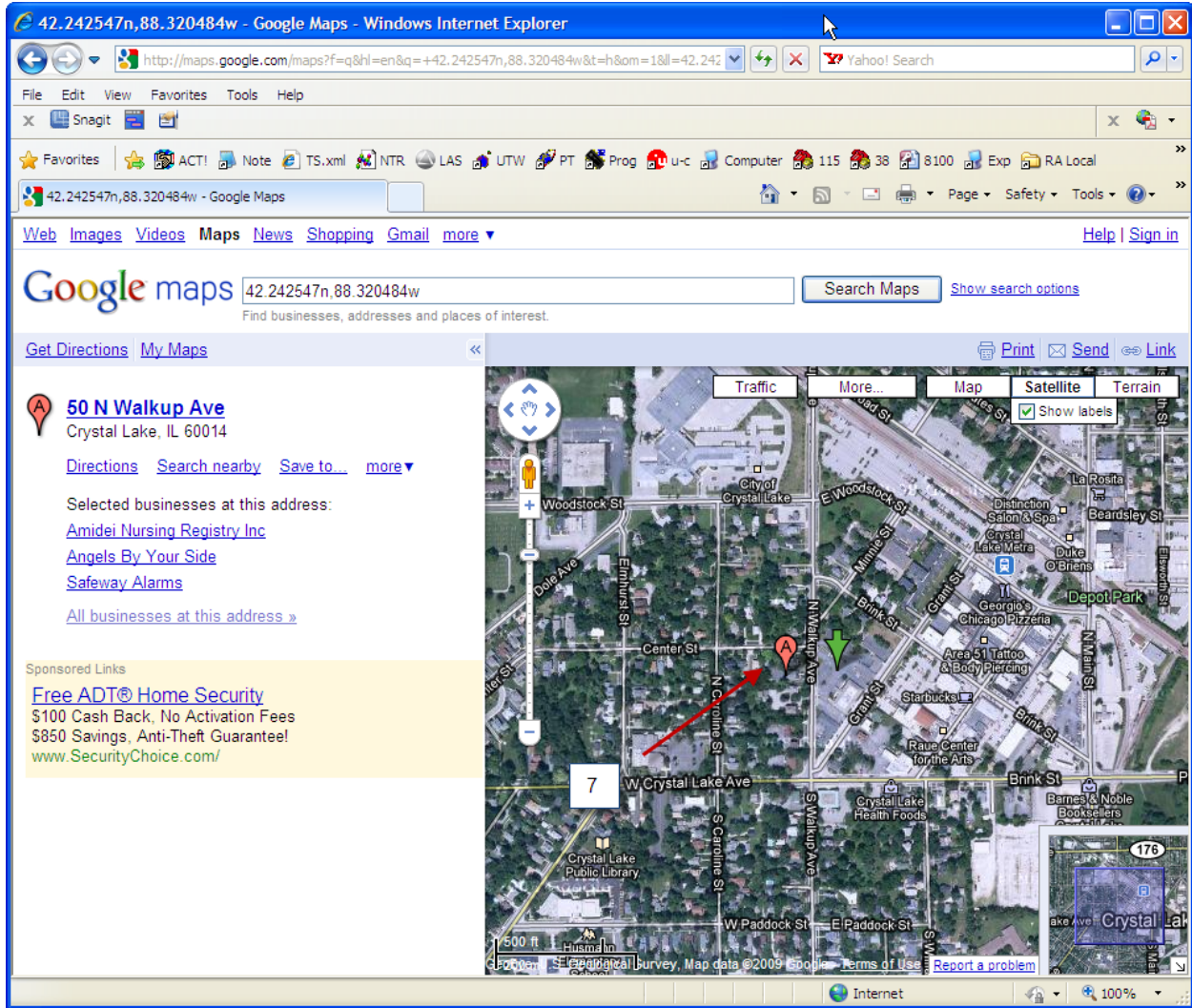
| Departed   | Driving Time | Arrived    | Location Arrived   | Distance (Miles) | Stopped Time |
|------------|--------------|------------|--|------------------|--------------|
| 01:32:10pm | 00m:29s      | 01:32:39pm | <a href="#">2098 DUNCAN PL, WOODSTOCK, IL 60098</a>      | 0.0              | 1h:15m:51s   |
| 02:48:30pm | 18m:14s      | 03:04:44pm | <a href="#">53 N WALKUP AVE, CRYSTAL LK, IL 60014</a>    | 7.7              | 10m:22s      |
| 03:15:08pm | 18m:57s      | 03:34:03pm | <a href="#">7359 STIRLINGSHIRE CT, MCHENRY, IL 60050</a> | 9.0              | 1h:35m:57s   |
| 05:10:00pm | 02m:25s      | 05:12:25pm | <a href="#">7861 BULL VALLEY RD, MCHENRY, IL 60050</a>   | 1.1              | 53m:44s      |
| 06:06:09pm | 07m:30s      | 06:13:39pm | <a href="#">GALLOWAY DR, WOODSTOCK, IL 60098</a>         | 4.0              | 14h:50m:10s  |

**Friday, October 16, 2009**  
Departed From : [GALLOWAY DR, WOODSTOCK, IL 60098](#)  
Arrived At : [1940 DUNCAN PL, WOODSTOCK, IL 60098](#)  
Total Driving Time : 9 minutes, 30 seconds  
Total Mileage Driven : 2.9 miles  
Maximum Speed : 41.0 mph

| Departed   | Driving Time | Arrived    | Location Arrived                                    | Distance (Miles) | Stopped Time |
|------------|--------------|------------|---|------------------|--------------|
| 09:03:49am | 09m:30s      | 09:13:19am | <a href="#">1940 DUNCAN PL, WOODSTOCK, IL 60098</a> | 2.9              | -            |



# LandAirSea Tracking Key/Pro<sup>®</sup> User Guide



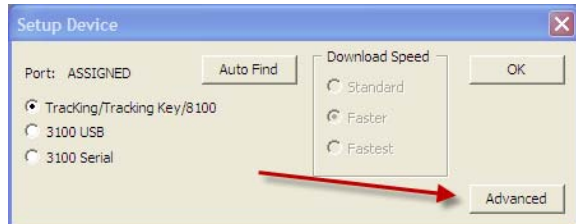
# LandAirSea Tracking Key/Pro<sup>®</sup> User Guide

## SETTING GPS SAMPLING RATE IN PAST TRACK

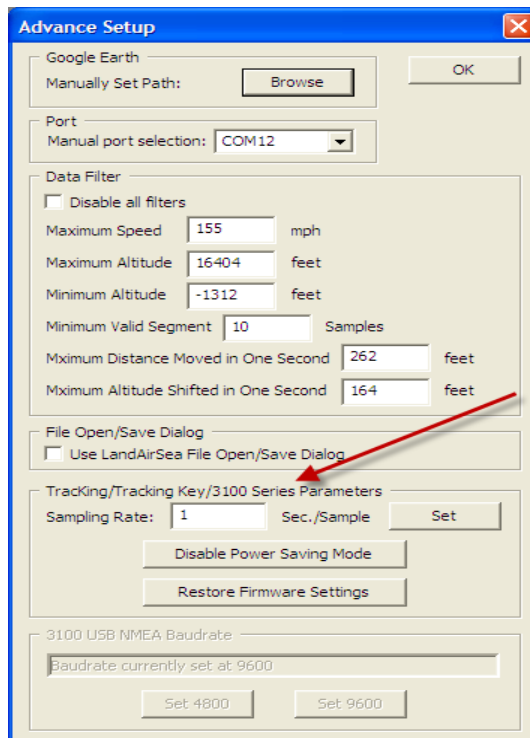
Your GPS device is set to sample the GPS satellites every 1 second. You can increase the sampling rate, but not to any rate greater than 5 seconds.

First, assure that Past Track has found your device. In the Past Track menu choose Setup/Setup Device and click on 'Find Unit'

Choose OK to exit the Find Unit screen. When you return to the Setup Device screen, choose Advanced



This will open the Advanced screen below. Go to the Sampling Rate field and set the sampling rate. (Do not set the sampling rate above 5 seconds.) The device will now be set at the rate which you have chosen. Past Track will set the sampling rate but will not read the sampling rate, so do not be confused when you go back into the Advanced screen and the sampling rate is still at 1 second. The sampling rate displayed in the Advanced screen will always default to 1 second, even though the sampling rate on the device has been changed.



## Troubleshooting Guide

### GENERAL TROUBLESHOOTING

| Problem  | Cause  | Solution  |
|--|--|---|
| <p>Error message reads –<br/>“Device not found”</p>                    | <ul style="list-style-type: none"> <li>☒ Low battery power.</li> <li>☒ Drivers are not installed</li> </ul>    | <ul style="list-style-type: none"> <li>☒ Check Battery Indicator Light and replace the batteries</li> <li>☒ Plug in the unit to your USB Port. Go to your <b>Control Panel &gt; System &gt; Click the Hardware Tab &gt; Device Manager</b>. Find the Item called Ports and double click it. The Tracking Key will be listed there. (May also appear as <i>Antaris 4 GPS</i>). If you do not see it, then restart your computer with the Tracking Key plugged in. If it is listed with a yellow exclamation mark right click it and select <b>Uninstall</b>, after which reboot your computer. Then follow the instructions in the Software Installation on page #.</li> </ul> |
| <p>Cannot Find the USB Plug, Power Switch, or Battery Compartment</p>  | <ul style="list-style-type: none"> <li>☒ No Cause</li> </ul>   | <ul style="list-style-type: none"> <li>☒ There is a rectangular protective cap that is snapped in on the front of the unit. Pull on this cap to expose the USB Plug</li> <li>☒ There is no power switch on the Tracking Key. Once you place batteries in the unit, it will be ON. To turn the unit off, remove the batteries or within 2 minutes the unit will enter sleep mode (Note: the Green LED will not turn off when in sleep mode). The Tracking Key Pro is equipped with a power switch.</li> </ul>  |
| <p>Error message reads –<br/>“Memory Empty- No downloadable data.”</p> | <ul style="list-style-type: none"> <li>☒ Placement within the vehicle.</li> <li>☒ Low battery power</li> </ul> | <ul style="list-style-type: none"> <li>☒ Double check your placement, and move the device if necessary. The GPS indication light will flash when there is a good GPS lock.</li> <li>☒ Replace the batteries.</li> </ul>   |
| <p>Red battery indication light or the light turns off right away.</p> | <ul style="list-style-type: none"> <li>☒ Low battery power.</li> </ul>   | <ul style="list-style-type: none"> <li>☒ Replace the batteries</li> </ul>   |

## LandAirSea Tracking Key/Pro<sup>®</sup> User Guide

|   |   |  |
|---|---|--|
| Gaps within the Data  | <ul style="list-style-type: none"> <li>☐ Placement within the vehicle.</li> <li>☐ GPS lock on time.</li> <li>☐ Low battery power.</li> </ul>  | <ul style="list-style-type: none"> <li>☐ Double check your placement, and move if necessary. The GPS indication light will flash when there is a good GPS lock.</li> <li>☐ After prolonged stops it may take your device 2-3 minutes to lock back on to the GPS satellites.</li> <li>☐ Replace the batteries</li> </ul>  |
| No Maps, Google Earth <sup>®</sup> will not run properly, or erratic da | <ul style="list-style-type: none"> <li>☐ Maps did not load or International installation was done instead of United States.</li> <li>☐ System is out of date</li> <li>☐ Bad tracking data.</li> </ul> | <ul style="list-style-type: none"> <li>☐ Contact <a href="mailto:support@landairsea.com">support@landairsea.com</a> for the walkthrough on how to fix this problem.</li> <li>☐ Double check Google Earth<sup>®</sup> system requirements and upgrade if necessary.</li> <li>☐ Reposition your device in the vehicle, erase the data you have on your unit and gather some new data.</li> </ul> |
| No Power  | <ul style="list-style-type: none"> <li>☐ Low battery power</li> <li>☐ Possible damage.</li> </ul>   | <ul style="list-style-type: none"> <li>☐ Replace the batteries. Contact <a href="mailto:support@landairsea.com">support@landairsea.com</a> for further assistance.</li> </ul>  |

## TROUBLESHOOTING PROBLEMS/SOLUTIONS

**Problem: The CD that came with my Key/Pro<sup>®</sup> does not load or there is an error when installing Past Track to my Computer**

**Solution:** To download the latest version of our Past Track software, copy and paste this link into your browser:

[www.landairsea.com/downloads/pt\\_inst\\_9\\_0\\_1\\_0.exe](http://www.landairsea.com/downloads/pt_inst_9_0_1_0.exe)

- Choose 'Run' to start downloading the file. Please be aware that the file for the full version 9.0 is very large, so make sure you do it when you have some time. Depending on the speed of your internet connection, it will take at least a half hour to 45 minutes to download.
- After the file has completely downloaded, the setup program will start. Be aware that the setup program sometimes takes up to 5 minutes to start after the download has completed.

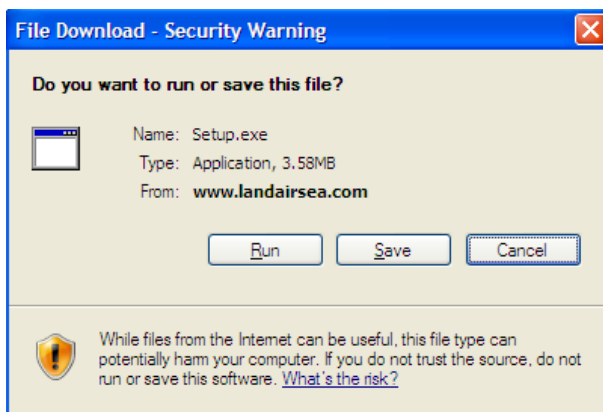
**Problem: Download completes very quickly and a message displays that says "Failed to Create File".**

**Solution:** There is not enough recorded data. If there are only 1 or 2 data points recorded, Past-Track software cannot download the data. Take the device for a test drive and make sure that the GPS light is flashing. Drive for at least a few minutes and try to download again.

**Problem: I want to update my Past-Track software program.**

**Solution:** You can now update your Past-Track program by using this link in your browser:

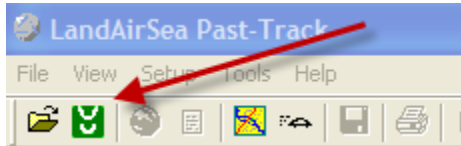
<http://www.landairsea.com/Updates/Past-Track/Setup.exe>



- Choose 'Run' to update Past-Track.

## LandAirSea Tracking Key/Pro® User Guide

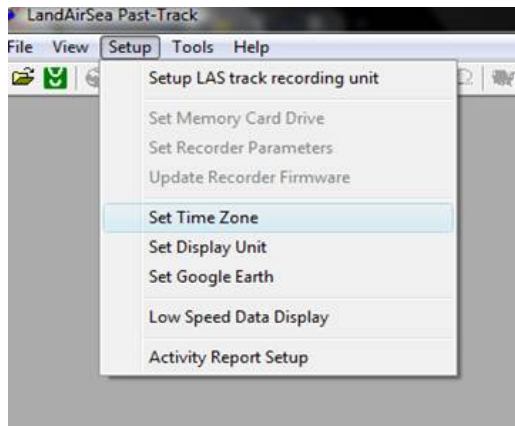
- Choose “Modify or repair current installation” select ‘Next’.
- ‘International’ installation screen will come up. Choose ‘Next’
- Choose “Finish” when installation is complete.
- Reboot your computer, if the device is still in the USB port, take it out and move it around to activate the motion detector and wake the device up. Re-insert the device in the USB port. Open Past Track. Select the Download button



- When the Download screen displays, Choose Find Unit
- When Past Track finds the unit, click OK.
- Choose the Download button to download your device

**Problem: The time is the Activity Report of my Tracking Key doesn't match my local time zone. How do I change the time on my key?**

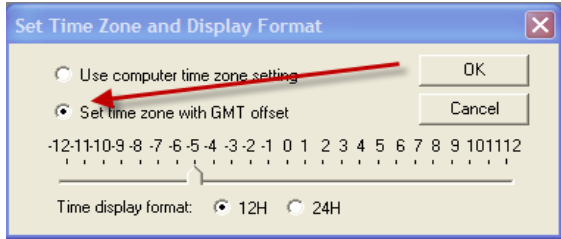
**Solution:** In Past-Track, in the program menu, click on Setup and select 'Set Time Zone'



The Set Time Zone and Display Format screen will open. Select ‘Set time zone with GMT offset’ and slide the pointer back or forward to adjust the time to meet your local time zone.

# LandAirSea Tracking Key/Pro<sup>®</sup> User Guide

---



Use chart below to determine which setting the time should be set.

## LandAirSea Tracking Key/Pro<sup>®</sup> User Guide

| Time Zone in United States | Examples of places in United States using these Time Zones  | GMT Offset Standard Time | GMT offset using Daylight Saving Time |
|----------------------------|---|--------------------------|---------------------------------------|
| Atlantic                   | Puerto Rico, US Virgin Islands  | GMT - 4h                 | n/a                                   |
| Eastern                    | Connecticut, Delaware, Florida, Georgia, part of Indiana, part of Kentucky, Maine, Maryland, Massachusetts, Michigan, New Hampshire, New Jersey, New York, North Carolina, Ohio, Pennsylvania, Rhode Island, South Carolina, part of Tennessee, Vermont, Virginia and West Virginia | GMT - 5h                 | GMT - 4h                              |
| Central                    | Alabama, Arkansas, Florida, Illinois, part of Indiana, Iowa, part of Kansas, part of Kentucky, Louisiana, part of Michigan, Minnesota, Mississippi, Missouri, Nebraska, North Dakota, Oklahoma, part of South Dakota, part of Tennessee, most of Texas, and Wisconsin               | GMT - 6h                 | GMT - 5h                              |
| Mountain                   | Arizona*, Colorado, part of Idaho, part of Kansas, Montana, part of Nebraska, New Mexico, part of North Dakota, part of Oregon, part of South Dakota, part of Texas, Utah, and Wyoming  | GMT - 7h                 | GMT - 6h<br>* n/a for Arizona         |
| Pacific                    | California, part of Idaho, Nevada, most of Oregon, Washington   | GMT - 8h                 | GMT - 7h                              |
| Alaskan                    | Alaska  | GMT - 9                  | GMT - 8                               |
| Hawaiian                   | Hawaii  | GMT - 10                 | n/a                                   |



# LandAirSea Tracking Key/Pro<sup>®</sup> User Guide

**Problem: Download completes very quickly and a message displays that says “Failed to Create File”.**

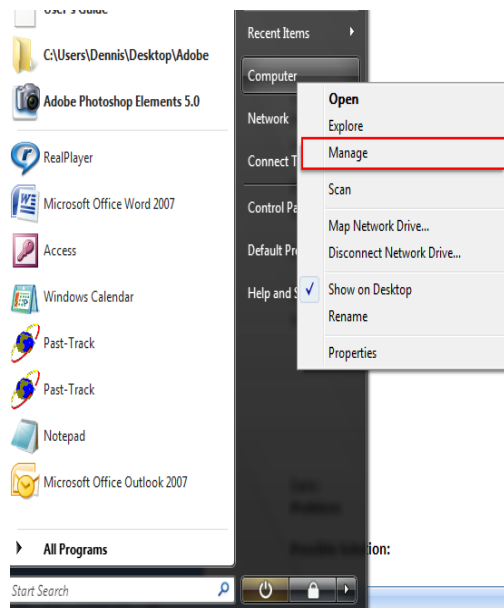
**Solution:** There is not enough recorded data. If there are only 1 or 2 data points recorded, Past-Track software cannot download the data. Take the device for a test drive and make sure that the GPS light is flashing. Drive for at least a few minutes and try to download again.

**Problem: Windows recognizes the drivers for my Tracking Key but the Past-Track software does not. How do I get Past-Track to recognize the drivers for the key?**

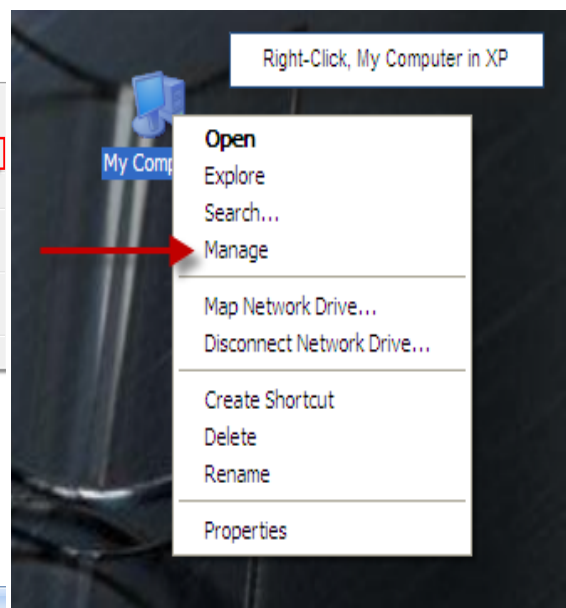
**Solution:** If the drivers for the Tracking Key are installed correctly on your computer, you may need to assign the drivers in the Past-Track software.

- First, verify that the drivers are installed correctly in Windows. Insert the key into the USB port.
- Open Device Manger by opening your start menu and right-clicking ‘Computer’ in Vista/Windows 7 or right-clicking the ‘My Computer’ icon on your desktop in XP, and then select ‘Manage’

*Vista Display*

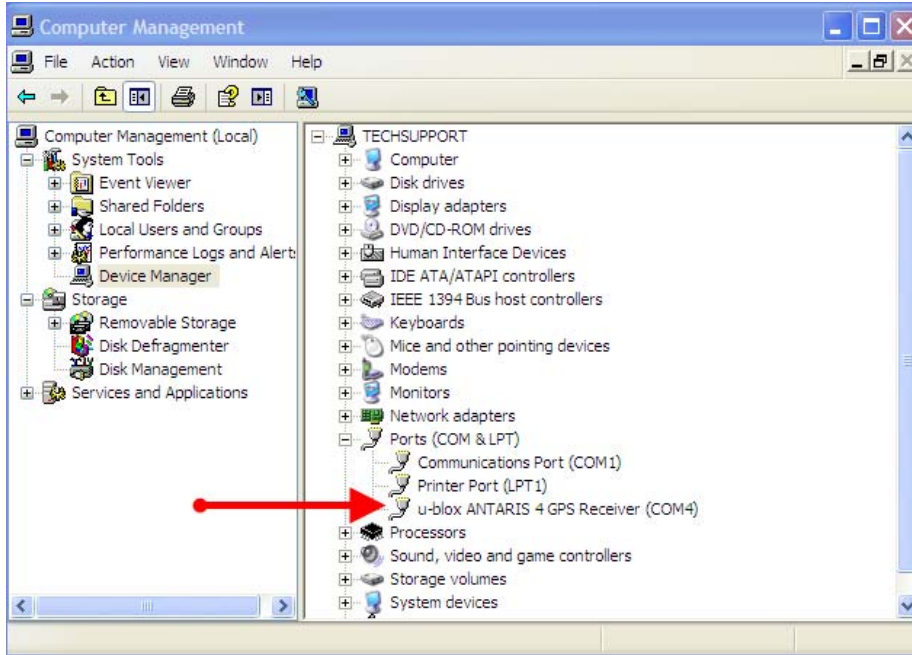


*XP Display*

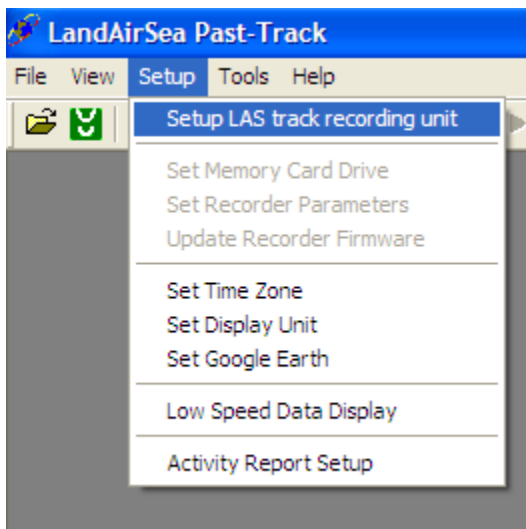


- This will open your Computer Management screen. Double-click on Device Manager. Click the + sign next to Ports to display the drivers for the key.
- The drivers for the Tracking Key should display as follows with the Device Manager/Ports screen open. Note the COM port number.

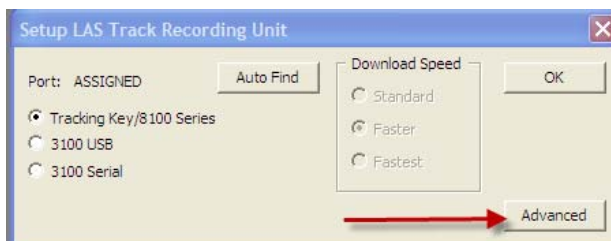
# LandAirSea Tracking Key/Pro<sup>®</sup> User Guide



- If the drivers display as above, open Past Track (make sure your Tracking Key is in the USB port) and select 'Setup' and then 'Setup LAS track recording unit'.

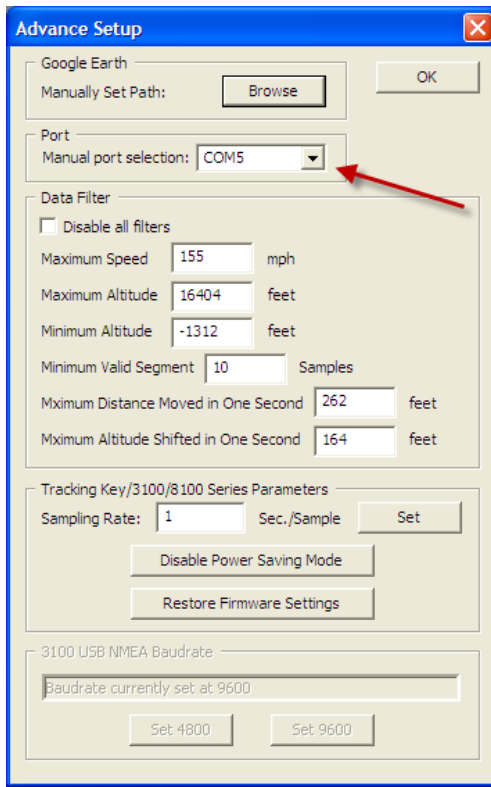


- In the Setup screen, choose the advanced button.



## LandAirSea Tracking Key/Pro® User Guide

- In the Advanced Setup screen, select the COM port that was assigned in the Device Manager screen.



- Choose OK to close the Advanced Setup screen which will return you to the Setup screen. You can then continue with downloading the device.

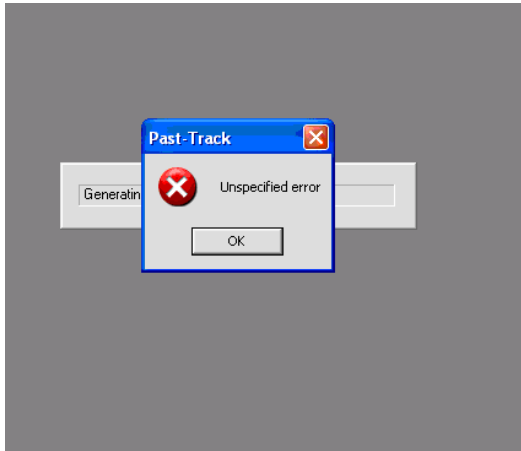
**Problem:** I've lost the top of my Tracking Key. Where can I buy a replacement with extra screws?

**Solution:** Please click this link:

<http://www.vehicle-tracking.com/>

It will take you to our storefront site. Choose Tracking Key Accessories to purchase replacement screws and magnet cover.

**Problem: When I try to create an Activity Report, I get the error below.**



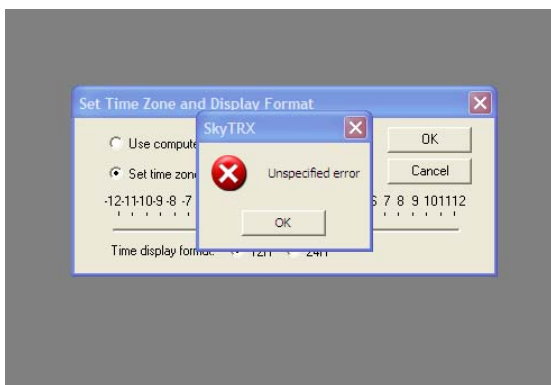
**Solution:** Run Live Update or the link below.

<http://www.landairsea.com/Updates/Past-Track/Setup.exe>

**Problem: My Google Earth is not displaying properly. Is there a place where I can get support regarding Google Earth display?**

**Solution:** You can get online support for the Google Earth online software at <http://earth.google.com/support/>

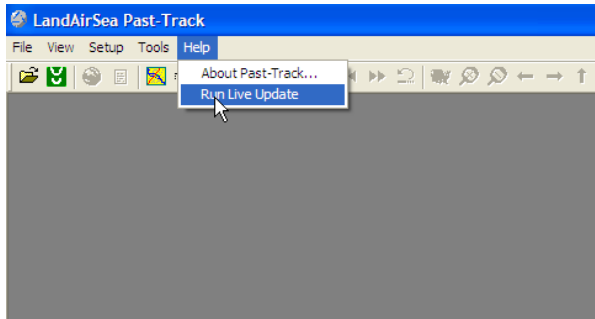
**Problem: When I try to change the Time Zone in Past Track to GMT, I get the error below.**



**Solution:** Open Past Track go to Help and choose 'Run Live Update'

# LandAirSea Tracking Key/Pro<sup>®</sup> User Guide

---



Or, if you are using an older version of Past Track that does not have Run Live Update in the Help menu, use the link below. Updating to the latest version of Past Track will solve the problem.

<http://www.landairsea.com/Updates/Past-Track/Setup.exe>

For additional support, email us at [support@landairsea.com](mailto:support@landairsea.com) or call us at 847-462-8100. Our support hours are M-F 8:30am – 5:00pm Central.

For more information and resources for LandAirSea GPS Systems, please visit us online at [www.landairsea.com](http://www.landairsea.com). Detailed information including specifications, manuals, images and sample data are available online within the support center. Should you have any additional questions, please email us at [sales@landairsea.com](mailto:sales@landairsea.com).