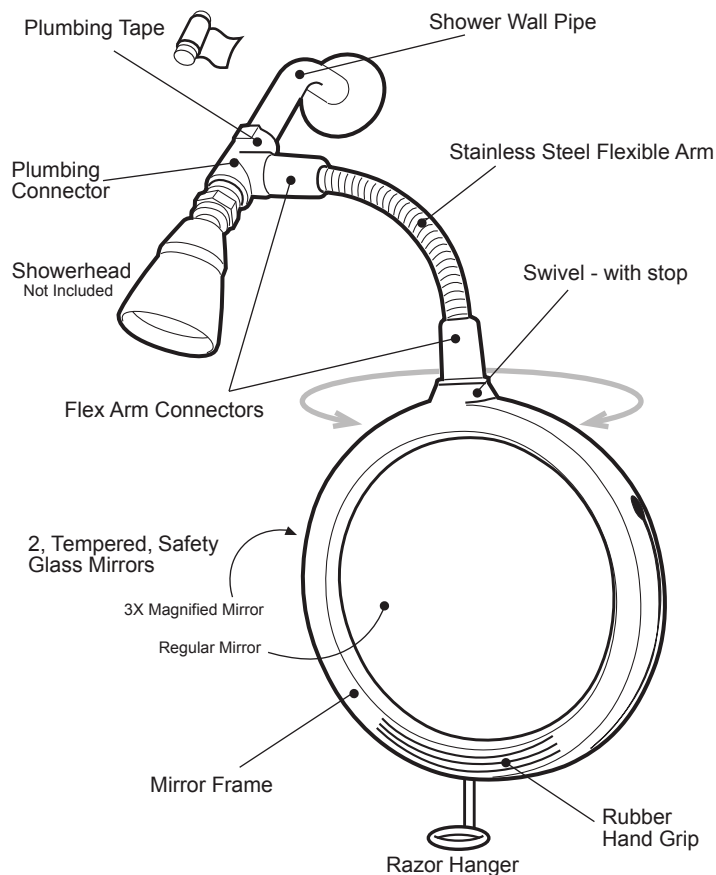


# SHARPER IMAGE®

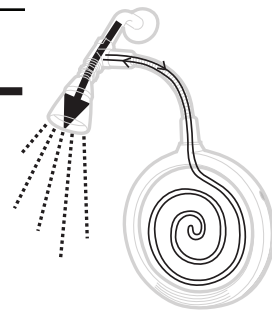
## Heated Fog-Free Shower Mirror

Fog Proof, 1X & 3X Magnification



### How The Fog Proof Works

Installed properly, a small amount of water from your shower will circulate through a copper coil embedded in the shower mirror. As the water circulates it warms the mirrors to the same temperature as the shower water, making it impossible for fog to form. The water completes it's circuit by traveling back up through the flexible arm and out into the shower stream.



### IMPORTANT

#### Plumbing Tape

Plumbing tape is included for sealing the threads of the shower wall pipe. To prevent any leaking, enough tape must be used. If more tape is needed than what has been supplied with this product, extra tape may be purchased at any retail store that sells showerheads.

#### Mirror Swivel

Mirror does NOT swivel endlessly. Mirror will spin 360 degrees and then hit a stop. Spin mirror in reverse direction to return to the other mirror side.

#### Flex Arm Connectors

Make sure connectors are screwed together tightly. Water will NOT leak from these connections, even if they become loose.

### CLEANING

#### Mirror Glass & Frame Chromed Finish

Keep water droplets from spotting the surface finish by wiping the mirror and frame dry with a soft towel AFTER EACH USE.

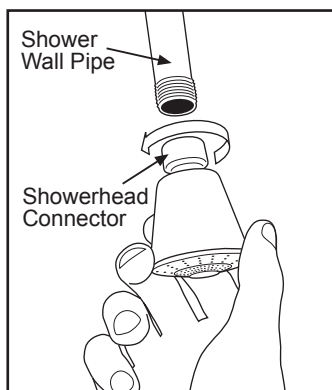
Clean only with a nonabrasive, liquid glass cleaner and a soft cloth.

Never use abrasive cleaners as they will scratch the mirror glass and frame surface.

With any cleaner, it is always a good idea to test a small area before cleaning entire surface.

Do not use paper towels to clean with - they can be abrasive and leave scratches in the chrome surface. Use only a soft, clean towel or cloth.

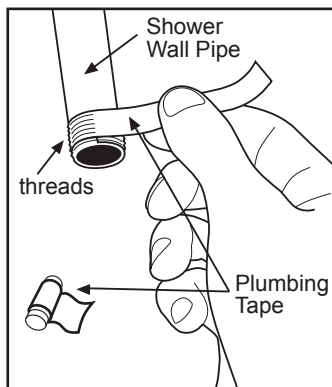
### INSTALLATION



#### 1. Remove Showerhead From Shower Wall Pipe

Turn showerhead connector counter clockwise.

Pliers may be required to loosen the showerhead. If pliers are needed, place a soft cloth between the pliers and the showerhead connector to prevent marring the showerhead connector surface.

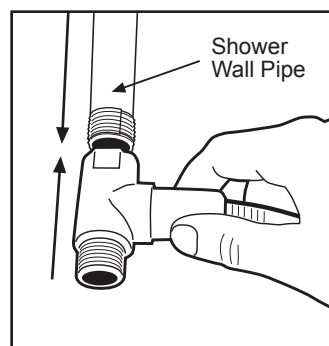


#### 2. Seal Shower Pipe Threads

Apply several turns of included plumbing tape to seal shower pipe threads.

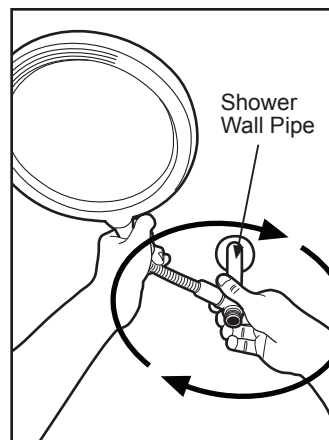
#### IMPORTANT

If this connection seems loose or leaks after installing the shower mirror, more tape will need to be applied to this connection.



#### 3. Align Plumbing Connection

Carefully align mirror plumbing connector with the threaded shower pipe.



#### 4. Connect Mirror

Rotate entire mirror around shower wall pipe.

Mirror will rotate easily only if plumbing connector and shower wall pipe are properly aligned.

#### TIP

If the mirror tightens down and comes to a final position that is not desired, the addition of more plumbing tape to the shower pipe threads will influence the final, tightened down position of the mirror.

Continued Other Side...

## Heated Fog-Free Shower Mirror

Fog Proof, 1X & 3X Magnification

### CUSTOMER SERVICE

(877) 714-7444 (prompt 3)

### WARRANTY

What does my warranty cover?

Your warranty covers your product for the period of one year after purchase from any defects in your product created at the time it was manufactured. It does not protect your product from normal wear and tear created during use. It also does not protect your product from any damage caused by you or anyone else.

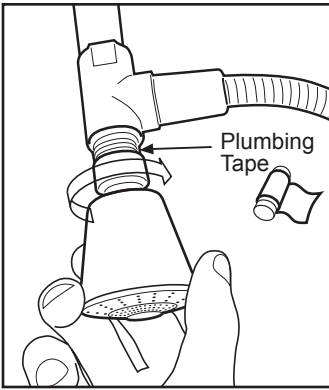
## Limited 1 Year Warranty

Camelot SI, LLC warrants that for the period of one year this product will be free from defects in material and workmanship. Camelot SI, LLC, at its option, will repair or replace this product or any component of the product found to be defective during this warranty period. Replacement will be made with a new or remanufactured product or component. If the product is no longer available, replacement may be made with a similar product of equal or greater value. This is your exclusive warranty.

This warranty is valid for the original retail purchaser from the date of initial retail purchase and is not transferable. Keep the original sales receipt. Proof of purchase is required to obtain warranty service. Camelot SI, LLC dealers, service centers, or retail stores selling Sharper Image products do not have the right to alter, modify or any way change the terms and conditions of this warranty.

This warranty does not cover normal wear of parts or damage resulting from any of the following: negligent use or misuse of the product, use contrary to the operating instructions, disassembly, repair or alteration by anyone other than Camelot SI, LLC or an authorized service center (this includes damage due to use of tools or harsh chemicals). Further, the warranty does not cover Acts of God, such as fire, flood, hurricanes or tornadoes.

Camelot SI, LLC shall not be liable for any incidental or consequential damages caused by the breach of any express or implied warranty. Except to the extent prohibited by applicable law, any implied warranty or merchantability or fitness for a particular purpose is limited in duration to the duration of the above warranty. Some states, provinces or jurisdictions do not allow the exclusion or limitation of incidental or consequential damages or limitations on how long an implied warranty lasts, so the above limitations or exclusion may not apply to you. This warranty gives you specific legal rights and you may also have other rights which vary from state to state or province to province.

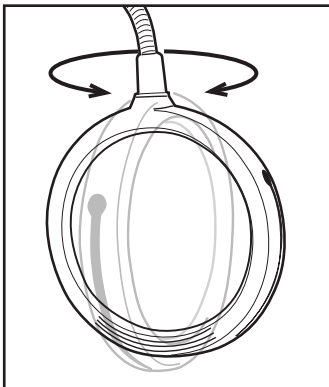


### 5. Connect Showerhead

Replace the showerhead by screwing the showerhead connector onto the threaded shower mirror fitting.

If pliers are needed to tighten the showerhead, place a soft cloth between the pliers and the showerhead connector to prevent marring.

Several turns of plumbing tape should be applied to the threads of this connection to keep it from leaking.

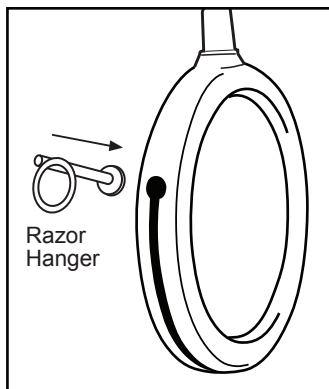


### Spin Mirror To Select Side

This mirror has 2 sides. Select either regular side or 3X magnified mirror side by spinning the mirror frame.

#### IMPORTANT

**The mirror frame will NOT spin endlessly. Mirror frame will spin 360 degrees and then stop. Reverse the spin of the mirror to select opposite side.**



### Assemble Razor Hanger

Insert razor hanger into one of the frame slot holes on either side of the mirror - as shown.

Slide razor hanger in frame slot so that it comes to rest at the bottom of the mirror.