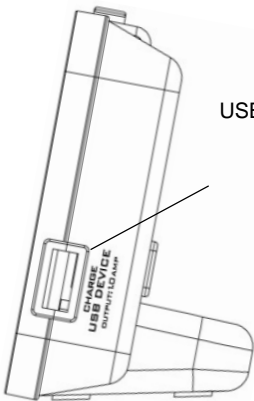
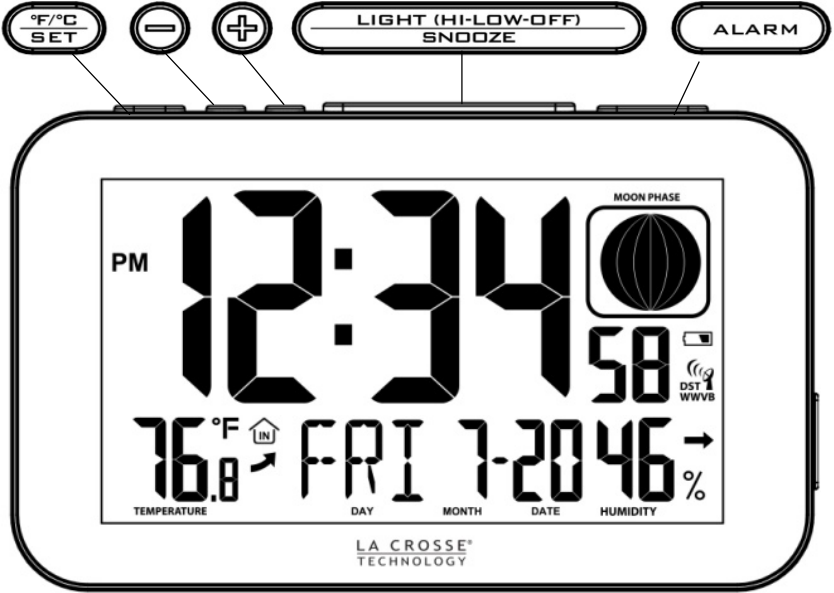
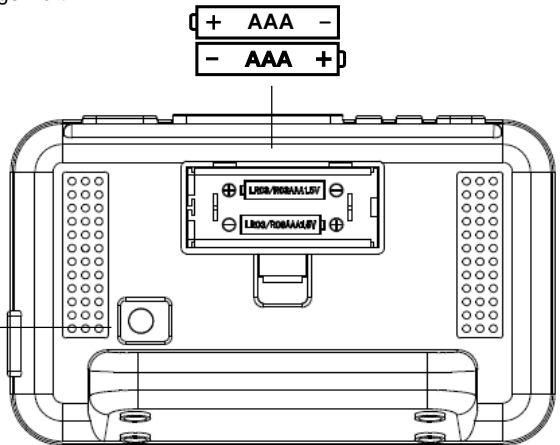


ATOMIC ALARM CLOCK



USB Charge Port

AC Power Jack
HX09-0501500-AU
DC 5.0V



Get Started

- 1: Insert 5.0 volt AC adapter into the wall then into the back of the alarm clock.
- 2: Insert 2 new AAA Alkaline batteries (not included) into the alarm clock. Observe the correct polarity.

Restart: If there is no indoor temperature data after 60 seconds, unplug the AC adapter and remove batteries from the alarm clock, press any button 20 times. After 15 minutes, return to # 1 above.

LCD Features



Adjust Backlight HI/LOW/OFF

For constant backlight use A/C adapter:

- Press the **HI/LOW/OFF** button to adjust the backlight.

Battery power only:

- Press the **HI/LOW/OFF** button and backlight will come on for 10 seconds when operating on battery power.
- Backlight will not stay on with battery operation only.

Low Battery Icon

When the icon is displayed in below the moon phase, replace batteries in the alarm clock.



Set Time & Calendar

1. Hold the **SET** button to enter time set mode.
2. Press the **+** or **-** buttons to adjust values.
3. Press the **SET** button to confirm adjustments and move to the next item.

Setting order:

1. WWVB time signal (On/Off)
2. Time Zone - 7 time zones
3. DST (Daylight Saving Time On/Off)
4. 12/24 hour time format
5. Hour
6. Minutes
7. Year
8. Month
9. Date

TIME ZONE	
AST	Atlantic
EST	Eastern
CST	Central
MST	Mountain
PST	Pacific
AKT	Alaska
HAT	Hawaiian

Press the **SET** button to exit, or wait 20 seconds without pressing buttons to return to the normal time display.

Fahrenheit/Celsius

- Press the **°F/°C** button to select temperature readings in Fahrenheit or Celsius.

USB Charging Port

NOTE: This is a power-output charging port. It does not provide power to the alarm clock.

Charge a smart phone, camera or other devices when the alarm clock is plugged into a power outlet with the included 5.0V AC adapter.

- Connect your external device's USB charging cable (not included) to the USB charging port.
- Charging times will vary.
- **USB Power Output:** 1A maximum current.
- Charge 1A devices or devices that are self-regulating.



Set Time Alarm

Setting the alarm and activating the alarm are separate actions.

1. Hold the **ALARM** button for 5 seconds to enter alarm time set mode.
2. The letters “AL” will replace the seconds and the alarm hour will flash.
3. Press the **ALARM** button to confirm and move to the minutes.
4. Press the **+** or **-** buttons to adjust the alarm minutes.
5. Press the **ALARM** button to confirm. After 5 seconds the clock will default to regular time mode.



Normal Time Display



Alarm Mode

Activate/Deactivate Time Alarm

- Press the **ALARM** button once to enter alarm mode. The letters “AL” will replace the seconds
- Press the **ALARM** button again to activate the alarm. Once activated, the bell icon appears.
- Press the **ALARM** button again to deactivate the alarm. The bell icon will disappear.



Alarm Bell Icon




Snooze (Silences alarm temporarily)

- When alarm sounds, press the **SNOOZE** button to silence the alarm for 10 minutes.
- The snooze icon **Zz** will flash.
- In snooze mode, press the **ALARM** button to stop alarm for one day.

Note: The alarm is crescendo sound. The alarm will sound for 2 minutes and then shut off completely if no buttons are pressed.

Temperature/Humidity Trend Indicators

The temperature (2°F / 1°C) and humidity (1% RH) trend indicators update every 30 minutes or less.

<ul style="list-style-type: none">• Temperature has risen in the past 3 hours.• Humidity has risen in the past 3 hours.	RISING 
<ul style="list-style-type: none">• Temperature has not changed in the past 3 hours.• Humidity has not changed in the past 3 hours.	STEADY 
<ul style="list-style-type: none">• Temperature has fallen in the past 3 hours.• Humidity has fallen in the past 3 hours.	FALLING 

Manual WWVB Atomic Time Search

- Hold the - button to start or stop a WWVB signal search.
- WWVB Icon will flash when searching.

For information about WWVB visit:

www.nist.gov/pml/div688/grp40/wwvb.cfm



ATOMIC SIGNAL SEARCH:

The LCD backlight and USB charging port will momentarily turn off while the station searches for the atomic signal. The alarm clock will start searching at UTC 7:00, 8:00, 9:00, 10:00, 11:00. ;

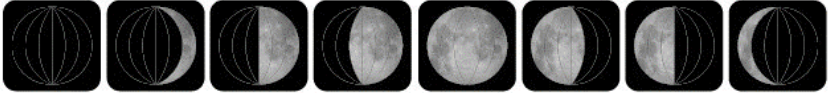
If there is no WWVB reception, the alarm clock will search the WWVB time signal every 2 hours until the WWVB time is received. After reception, this alarm clock will only search for the atomic signal after midnight.

Position Alarm Clock

- Position the alarm clock three feet from the electrical outlet and six feet from other electronics for best WWVB reception.
- Have the front or back of the alarm clock facing Colorado.

Moon Phase

The moon phase is based on the Gregorian calendar and the year, month and date set (manually or by the WWVB signal). Most Internet moon phase calculations are based on the lunar calendar.



New
Moon

Waxing
Crescent

First
Quarter

Waxing
Gibbous

Full
Moon

Waning
Gibbous

Last
Quarter

Waning
Crescent

Specifications

Indoor:

Temperature Range: +32°F to +122°F (0°C to 50°C)

Humidity Range: 10% to 99% RH

Power:

Atomic Alarm Clock: 5.0V A/C power adapter (included)

AC6 Adapter number: HX09-0501500-AU

Battery backup: 2-AAA, IEC, LR3 batteries (not included)

Battery Life:

Battery Backup: Battery life is over 24 months when using the AC adapter for primary power

USB:

Output: 1 Amp maximum current
(charging cable not included)

Dimensions:

Atomic Alarm Clock: 5.56" L x 2.2" D x 3.33 " H
(141.2 x 55.8 x 86.4 mm)

Care and Maintenance

- Do not mix old and new batteries
- Do not mix Alkaline, Standard, Lithium or Rechargeable Batteries
- Always purchase the correct size and grade of battery most suitable for the intended use.
- Replace all batteries of a set at the same time.
- Clean the battery contacts and also those of the device prior to battery installation.
- Ensure the batteries are installed with regard to polarity (+ and -).
- Remove batteries from equipment which is not to be used for an extended period of time.
- Promptly remove expired batteries.
- If the alarm clock is not working properly, change the batteries and/or check the A/C cord connection.

Warranty and Support Information

La Crosse Technology, Ltd. provides a 1-year limited time warranty (from date of purchase) on this product relating to manufacturing defects in materials & workmanship.

Before returning a product, please contact our friendly customer support with questions or visit our online help (manuals and FAQs):

Phone: 1-608-782-1610

Online Product Support:

www.lacrossetechnology.com/support

Product Registration:

www.lacrossetechnology.com/support/register

View full warranty details online at:

www.lacrossetechnology.com/warranty_info.pdf

Warranty Address:

La Crosse Technology, Ltd

2830 S. 26th St.

La Crosse, WI 54601



FCC STATEMENT

This equipment has been tested and found to comply with the limits for a Class B digital device, pursuant to part 15 of the FCC Rules. These limits are designed to provide reasonable protection against harmful interference in a residential installation. This equipment generates, uses and can radiate radio frequency energy, and if not installed and used in accordance with the instructions, may cause harmful interference to radio communications.

However, there is no guarantee that interference will not occur in a particular installation. If this equipment does cause harmful interference to radio or television reception, which can be determined by turning the equipment off and on, the user is encouraged to try to correct the interference by one or more of the following measures:

- Reorient or relocate the receiving antenna.
- Increase the separation between the equipment and receiver.
- Connect the equipment into an outlet on a circuit different from that to which the receiver is connected.
- Consult the dealer or an experienced radio/TV technician for help.

This device must not be co-located or operating in conjunction with any other antenna or transmitter.

Operation is subject to the following two conditions:

- (1) This device may not cause harmful interference, and
- (2) This device must accept any interference received, including interference that may cause undesired operation.

Caution!

The manufacturer is not responsible for any radio or TV interference caused by unauthorized changes or modifications to this equipment. Such changes or modifications could void the user authority to operate the equipment.

All rights reserved. This manual may not be reproduced in any form, even in part, or duplicated or processed using electronic, mechanical or chemical process without the written permission of the publisher.

This booklet may contain errors or misprints. The information it contains is regularly checked and corrections are included in subsequent editions. We disclaim any responsibility for any technical error or printing error, or their consequences. All trademarks and patents are recognized.

Canada Statement

This device complies with CNR Industry Canada license -exempt devices. Operation is subject to the following two conditions:

- (1) This device may not cause interference; and
- (2) This device must accept any interference, including interference that may cause undesired operation of the device.