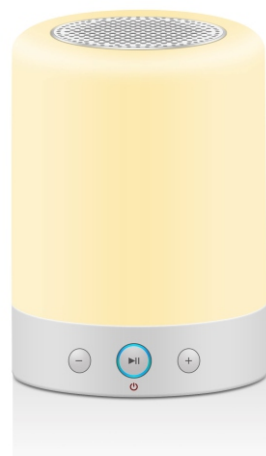


Romantic lighting Bluetooth speaker



User Manual

Thank you for choosing us. Please read this user manual before using the speaker.

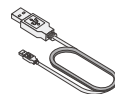
Packing list



The speaker



user manual



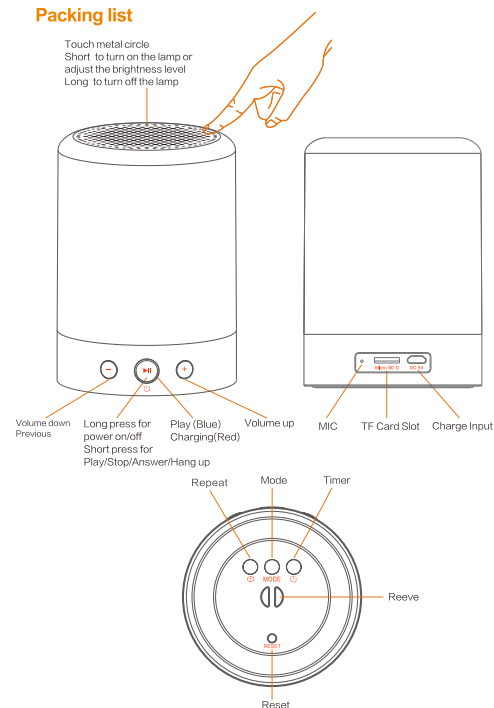
USB data

Specifications:

- Name: Romantic Lighting Bluetooth Speaker
- Model No. : L7
- Charging Input: DC5V - 1000mAh
- Battery Capacity: 3.7V / 2,000 mAh
- Charging Time: 3-3.5 Hours
- Speaker Specifications: $\Phi 52 \times 32$ mm
- Speaker power: 4 Ω 4W
- Lamp power: 1.2 W
- Frequency Range: 70Hz-20KHz
- Distortion: $\leq 0.5\%$
- Whole Signal to Noise Ratio: ≥ 65 dB
- Main Material: ABS/PP, Stainless steel
- Size: $\Phi 86 \times 121$ mm
- Weight: About 350g
- Music Playing time: 5 hours (playing Bluetooth music only)

Lighting time: 5 hours on high brightness, 120 hours on low brightness (Note: The working time will be less when speaker and light are both turned on at the same time).

Packing list



Button Icon

	Power On/ Power Off (long press for 3 seconds)	MODE	Mode switch
	Play/pause (music play) Answer/hang up(phone call)		Repeat
	Volume up/Next		Timer
	Volume down/previous	RESET	Reset

Power On/Off

Long press for three seconds to turn on the speaker, and three seconds pressing again to turn off the speaker. The blue indicator will flash when the speaker is on, and the speaker will enter Bluetooth mode automatically at the same time.

Charging

Please make sure the speaker is fully charged at first use. There will be a voice notice " 10% low battery remain, please recharge ", and please charge the speaker with the provided USB cable and the 5V output charger adaptor of the cell phone or tablet which is compatible with USB. The red indicator will on when charging, and the light will be off when full charged.

Remaining battery capacity query

Long press " " to inquire the battery remaining capacity. There a voice to notice the current capacity as follows: " 10% low battery remain, please recharge ", " About 30% battery remain ", " About 50% battery remain ", " About 80% battery remain ", " 100% battery remain " .

Reset

When the lamp, music playing and other functions are out of working, please press the " RESET " button with needle, restart the speaker, the speaker will return work as normal.

Speaker function:

Bluetooth Mode:

First turn on the speaker, the speaker will enter Bluetooth mode automatically. Or short press the " MODE " button switching to the Bluetooth mode, and the blue indicator light will flash, accompanying with voice notice " Bluetooth's ready, waiting for device connecting ". At this moment, the speaker is waiting for pairing status, and only in this status the speaker can be connected successfully by phone or tablet. If the speaker were connected by before, it will try to reconnect to the Bluetooth device automatically when enter the bluetooth mode.

Bluetooth connection:

Step 1: Open the Bluetooth setting on the phone or tablet and click " searching device ". The device will search for Bluetooth devices automatically.

Step 2: The Bluetooth pairing name is found out when the phone or tablet screen displays " Lightspeaker L7 ", then click it for connection.

Step 3: Enter " 0000 " or " 1234 " and click OK if it requires entering a password.

Step 4: The phone or tablet will indicate successful connection when connected. And the blue indicator light will on.

Bluetooth pairing and connection instruction:

1. The speaker will try to reconnect the Bluetooth device if they are connected before.
2. The cell phone and tablet will can not connect the speaker when connecting with other Bluetooth device. In this case, it needs to turn off the Bluetooth of the device that connecting with the speaker, then use the phone or tablet to connects the speaker.

Music Playing

Open the player of the phone or tablet when the bluetooth connection is created successfully with the Bluetooth speaker. Click to play music, and the Bluetooth speaker will play the music.

Operating the buttons on the Bluetooth speaker to control the music playing:

Short press " " for music play/pause .

Short press " " for next song play and long press for volume up.

Short press " " for previous song play and long press for volume down.

Bluetooth Hands free Call

Answer and hang up the call:

There will be a ringing when there is a incoming call.

Touch the top metal circle or Click the " " .

to answer the incoming call, and touch the top metal circle again and touch the top metal circle or click the " " again to hang up.

TF Card Mode

Insert the TF card or short press " MODE " button switching to TF card mode when the speaker is on. There will be a voice notice " TF card music player ". The speaker support music playing with MP3/WAV files that stored in your TF card.

Operating the buttons on the Bluetooth speaker to control the music playing:

Short press " " for music play/pause .

Short press " " for next song play and long press for volume up.

Short press " " for previous song play and long press for volume down

In TF mode, short press the " " will repeat the current playing music, short press again to cancel the repeat playback.

FM Mode

Short press the " MODE " button switching to FM radio mode when the speaker is on, there will be a voice notice " FM Radio ". Short press the " " button in FM mode to search the channels automatically, the indicator light will flash rapidly when searching channels, and the channels will save automatically after searching.

Operating the buttons on the Bluetooth speaker to control the FM radio:

Short press " " for channels searching,

Short press " " again stop searching.

Short press " " for next channel and long press for volume up.

Short press " " for previous channel and long press for volume down.

Lamp Function

Turn on the lamp by touching the top metal circle when the speaker is on. There are seven different lighting level: Micro, Low, Medium, High, Orange, Color breathe, Colorful fix. Cycling the lighting by keep touching. Long touch the top metal circle for three seconds to turn off the light. Soft touch the metal circle will answer or hang up the call when there is a phone call.

(Note: The lamp will be out of work when the speaker is off, the lamp will restart when the speaker is on)

Timer Function

Click the timer button " " at the bottom when the speaker is on. There will be the voice notice for the different timing time by turns : " 10 mins timing ", " 20 mins timing ", " 30 mins timing ", " 60 mins timing ", " 90 mins timing ", " 120 mins timing " .

The speaker and light will turn off at the set time automatically. The timer is suitable for mask, Yoga and sleeping music light. Long press the timer button " " to cancel the timer function.

Frequently Asked Questions

Questions	Solutions
Unsuccessful pairing for connection	1. Make sure the speaker is in Bluetooth mode. 2. Make sure the speaker has not been connected with the other device. 3. Check if there are many Bluetooth device working around, Which may interfere the Bluetooth connection. 4. Try to restart the Bluetooth of the phone or tablet, and reconnect the speaker again.
No voice or Distortion of sound	1. Check the volume of your phone or the speaker, and adjust the volume. 2. Check if the battery is too low. Please recharge it.
Music breaking play	1. Check if the device is beyond the effective connection distance. 2. Check if there is any obstacle between the speaker and your device.
The indicator not shining in Bluetooth mode	1. The battery is low. Please charge it. 2. Please reboot the speaker.

Precautions

1. Please store and use the product in room temperature environment.
 2. Do not expose this product in rain or wet conditions.
 3. Do not drop or bump this product.
 4. Do not disassemble, repair, or modify the product.
 5. Please use the power charge with rated voltage for the speaker.
 6. It may cause hearing damage if playing music in high volume for a long time. Consider avoiding excessively high volume when playing music for a long time.
- Disassemble this product will invalidate the warranty.

This device complies with part 15 of the FCC Rules. Operation is subject to the following two conditions: (1) This device may not cause harmful interference, and (2) this device must accept any interference received, including interference that may cause undesired operation.

This equipment has been tested and found to comply with the limits for a Class B digital device, pursuant to part 15 of the FCC Rules. These limits are designed to provide reasonable protection against harmful interference in a residential installation. This equipment generates, uses and can radiate radio frequency energy and, if not installed and used in accordance with the instructions, may cause harmful interference to radio communications. However, there is no guarantee that interference will not occur in a particular installation. If this equipment does cause harmful interference to radio or television reception, which can be determined by turning the equipment off and on, the user is encouraged to try to correct the interference by one or more of the following measures:

- Reorient or relocate the receiving antenna.
- Increase the separation between the equipment and receiver.
- Connect the equipment into an outlet on a circuit different from that to which the receiver is connected.
- Consult the dealer or an experienced radio/TV technician for help.