

# User Manual for KT04

## Kids Smart Watch

**T**hank you very much for choosing our Children Color Screen watch . You could fully get to know how to use the overall system and relevant device upon reading the booklet, finding out its utility in function and simplicity in operation.

This device is mainly used in location and tracking, with the function of dialing and answering, which is convenient to keep a close watch on children's movements anytime and anywhere.

Our company reserves the right to revise the content of this booklet without notice in advance.

When you get the KT04, you need first download and install the “kid mate” APK in your smart phone in order to enable each operation on the watch.

Website: [www.abardeen.com](http://www.abardeen.com)

Due to product software will update constantly, the content is different from final product operations. If any change, we'll not do for further notice. For the latest version of the operating instructions, please refer to the official website [www.abardeen.com](http://www.abardeen.com)

### Quick Guide

1. Install SIM Card
2. Button Descriptions
3. Watch Screen
4. Charging
5. Wearing Watch
6. Download APP, connect watch
7. Waking up watch;
8. Main Menu
9. Calling
10. Voice message
11. Colorful Icons

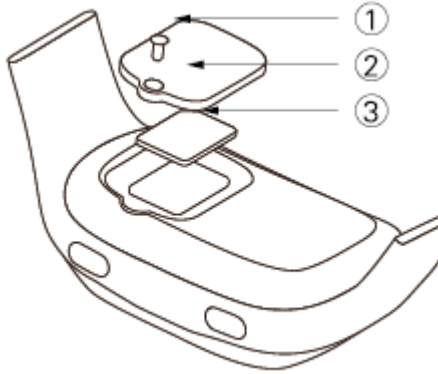
## 1.Install SIM Card

### 1) Buy suitable SIM Card

Buy GSM Nano SIM Card, Please make sure your sim card has the caller ID display function and GPRS service.Our watch only support GSM SIM Card with 2G network , it can be compatible with 3G, 4G Sim card if they support 2G network at the same time.

### 2) Install SIM Card

- ① Before installing SIM Card, make sure this watch is power off;
- ② Please use Screwdriver to open this SIM Card case on the back of the watch ;
- ③ We are using standard Nano SIM card (SIM card for iPhone6S). Insert the card with the metal side up into the Sim card case;
- ④ Cover the Sim card case, use the screwdriver to tighten the screws;
- ⑤ Start the watch , if it is no signal , please install Sim card again.



## 2. Button Descriptions:



### ① 1.1 Power On / Off button

Press button ③ for 3 seconds to boot, press button ③ for 8 seconds to turn off the watch;

### ② SOS Button ( button ④)

In emergency, press SOS button ( button ④)for 5-7 seconds, the watch will call the first three family number in turns , and send location by SMS automatically.

### ③ Calling Family number quickly

Under main menu, Press button ① for 3 seconds , call the family number 1. press button ② for 3 seconds , call the family number 2.

### ④ Switch button

Under standby screen, press button ① and button ④ to switch function ; under volume interface, press button ① and button ④ to adjust volume .

### ⑤ Confirm button ( button ②)

In function interface, press button ② to enter the different functions; under contact list , press button ② to record, release to send the voice.

#### Back Button

Click back button to back or hang up the calling.

#### Reset button

Press this button to restart the watch quickly

Microphone :Don't cover it during calling

Speaker:Don't cover it during calling

Watch Screen:

KT04 is color screen , touch operating smart kids watch.



日期、星期、时间自动联网更新

周一

:Monday



:Signal



: Internet



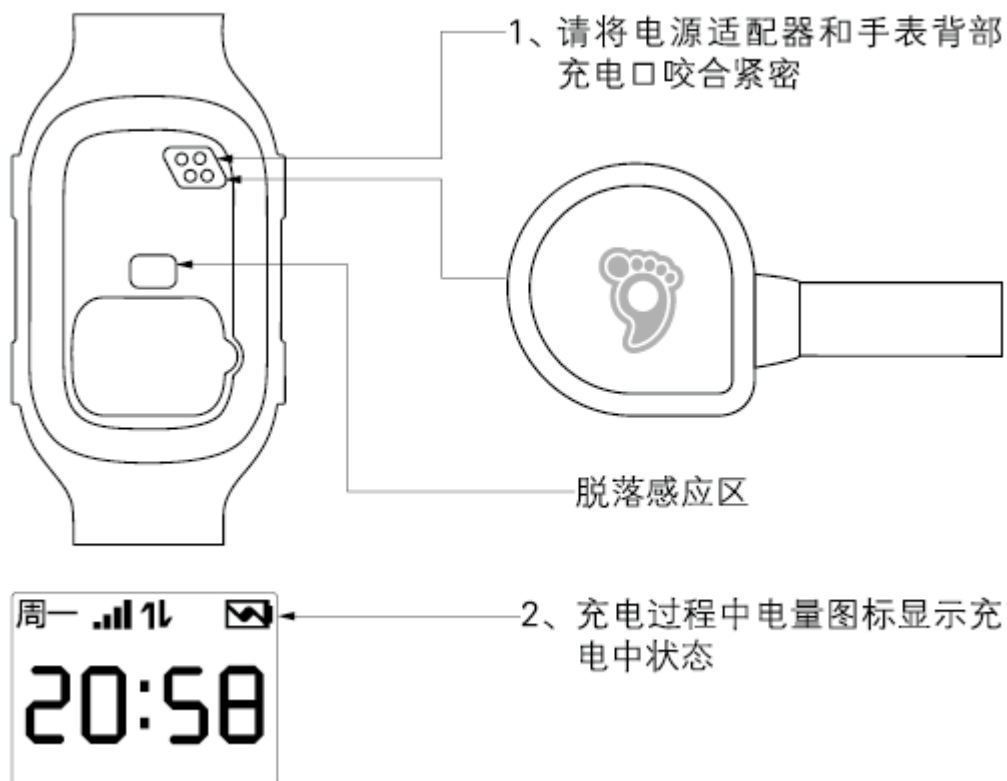
: Battery



Time, date will update automatically when the watch connect to server.

Charging:

Please use the original power adapter and cable to charge the watch



1, This watch is pin charging, tightening this pin and power adapter.

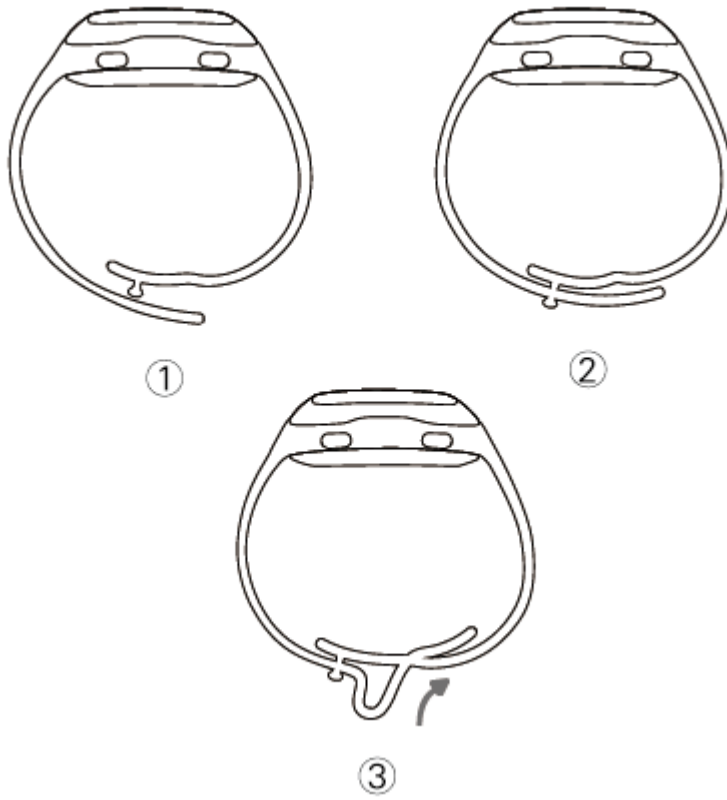




: When watch is charging , this battery icon show charging .

Wearing Watch:

Please wearing this watch as photo shows:



## About APP

### 1. APK Brief Introduction

#### ★ Abardeen KT04 relationship with APP:

Before using KT04, you should download APP : Kids Mate . APP software is the core of the watch, all functions are implemented on the APP

### 2. APP Download

#### ★ Where to download the APP

You can search “ kid mate” from Apple store and Google play, then install it into your smart mobile

(Note: You could operate on the following steps after the APK is downloaded successfully)

### 3. Connect watch with APP

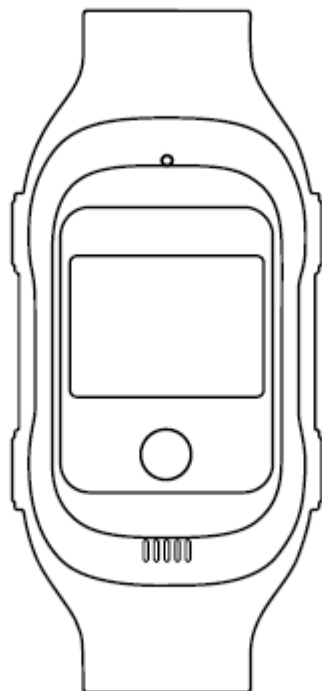
Register and Login on APP, scan the QR code on the back of watch to connect this watch.

### 4. Add family number on APP

Add your mobile number as family number on APP.

## Waking Up Watch

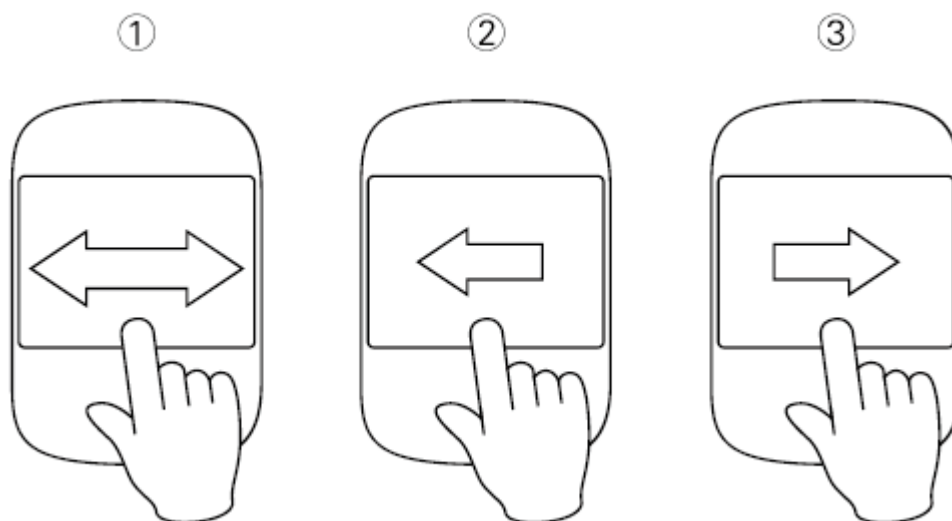
1. When watch under sleeping, click any button to wake up the watch .



### 2. Main interface slide to enter main menu

Slide like photo shows:

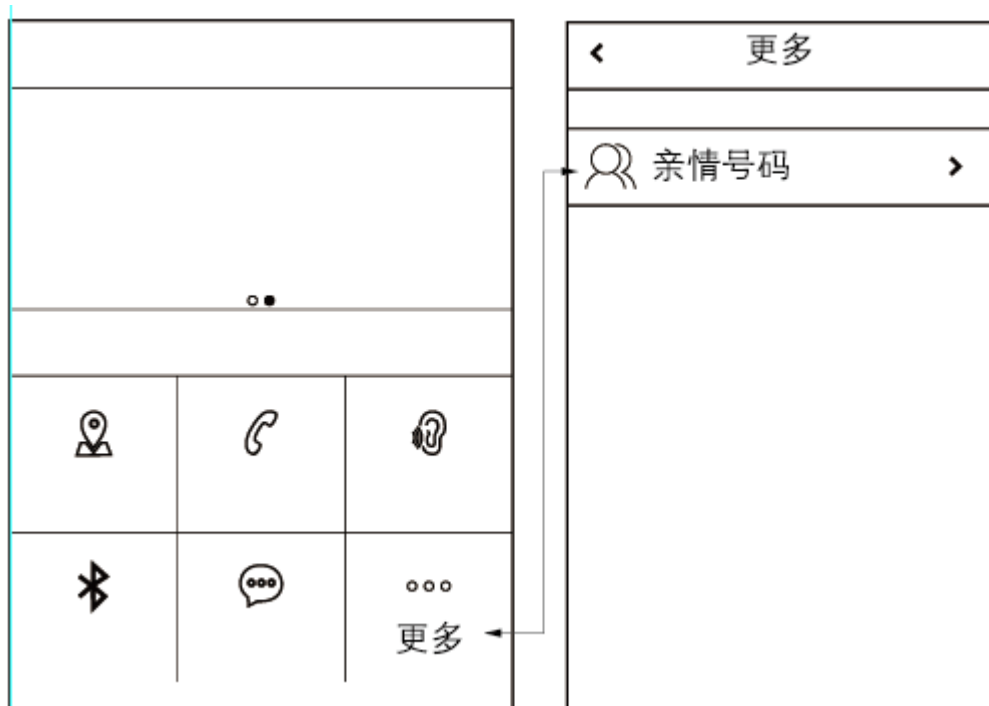
- 1) Slide left or right to enter function interface;
- 2) When watch in function interface , slide up or left to enter next function ;
- 3) When watch in function interface slide down or right to last function.



Add family number:

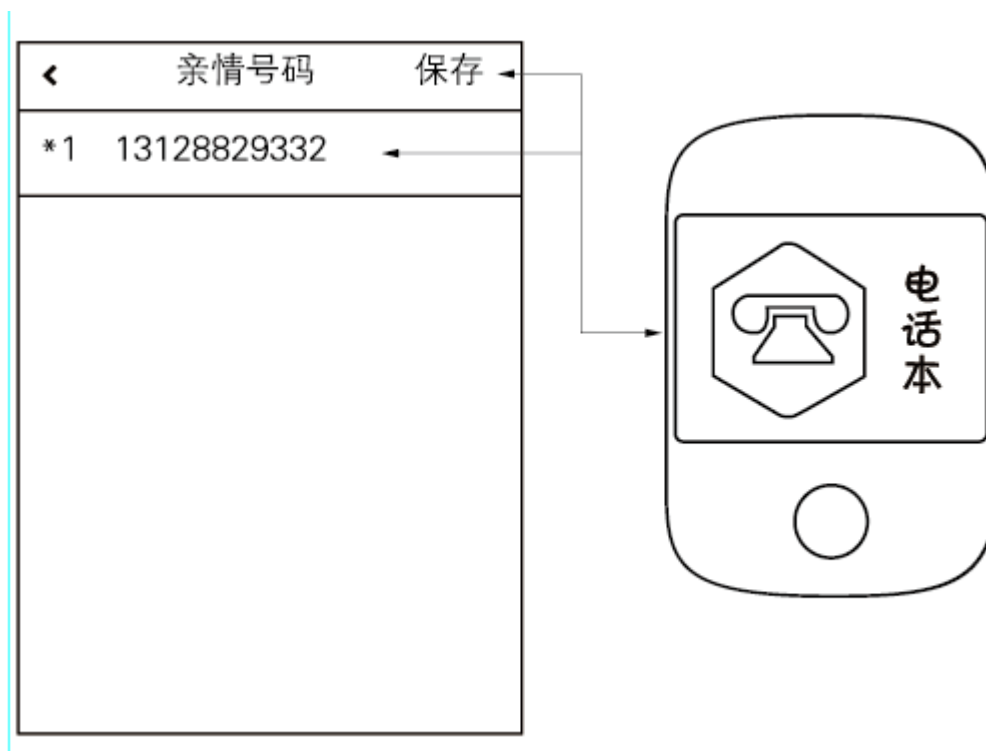
When add family number on APP, watch will add this number as contact number automatically

1. Click More- Family number, can add 60 family number in total





2. Input telephone number, then save, add it successfully.
3. Watch will add this number as contact number automatically



### Calling

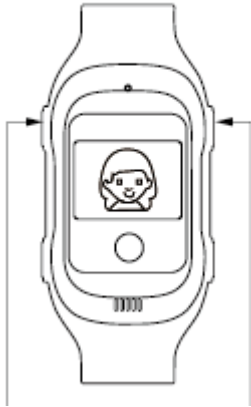
Touch calling : Touch the avatar to calling



点击屏幕头像  
拨打电话

### Calling quickly

Press button ① and button ② for 3 seconds to calling quickly



### Button Calling

When watch is in contact interface, press button to calling



2, Answering calling :

Touch answering:



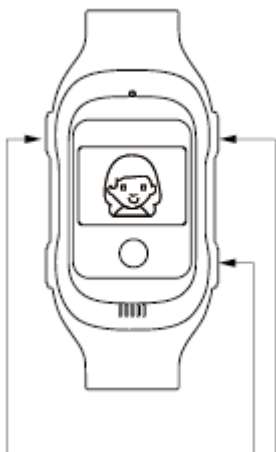
Smart

Smart Answering: : Shaking arms to answer the calling



翻动手腕  
接听电话  
( APP 端设置 )

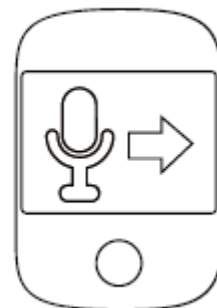
Button answering:click any button except power on/off button to answering



Voice message

Touch to sending the voice message:

- 1) Touch the avatar
- 2) Recording
- 3) Release it and sending



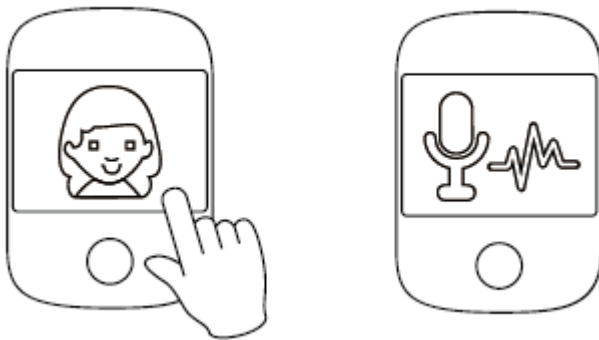
Button sending:

- 1) Press button ② for 3 seconds;
- 2) Recording;
- 3) Release it and sending

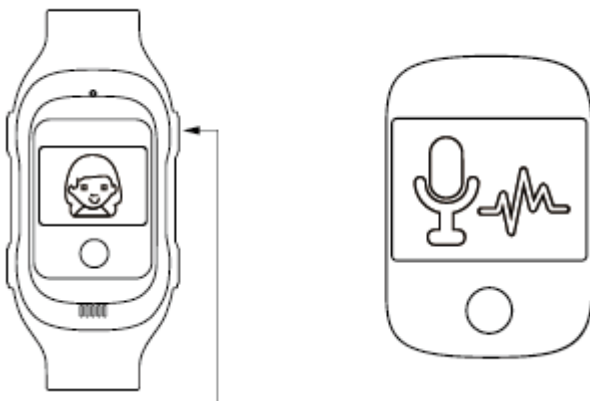


## 2. Answering Voice message

Touch answering: Click avatar to playing the voice message.

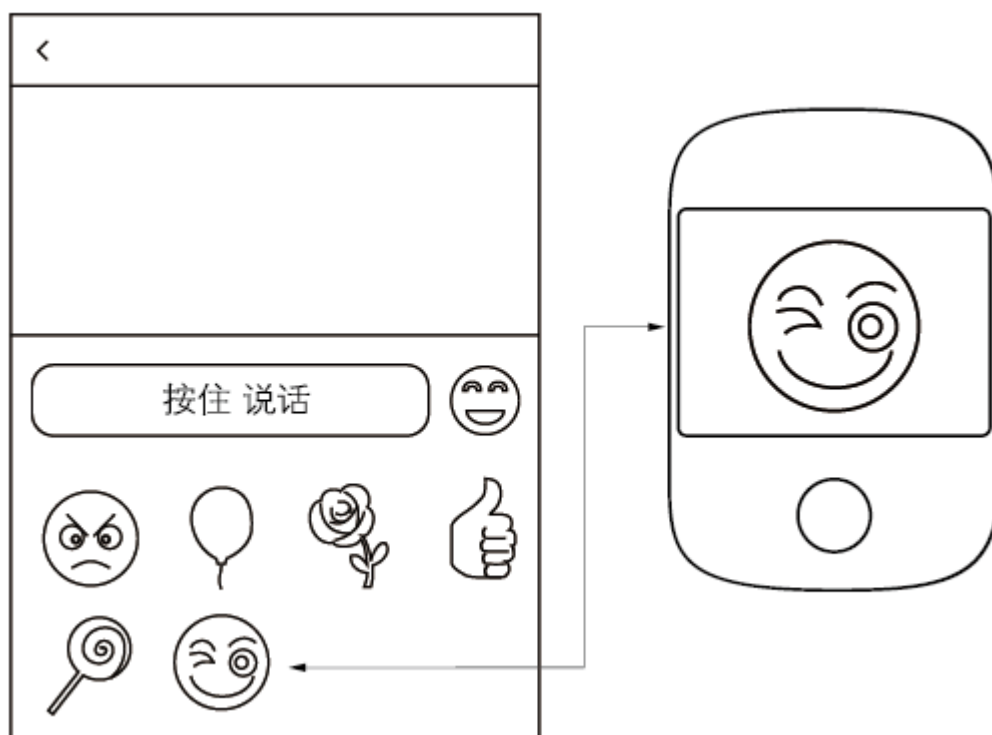


Button answering: Press button ① for 3 seconds, to playing the voice message



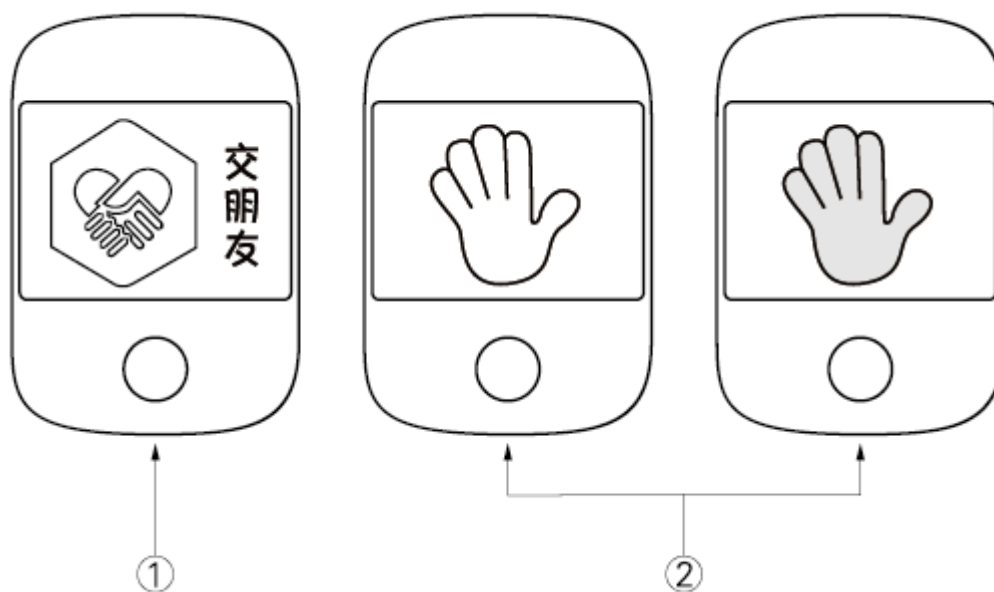
Colorful Icons

1. When in voice message on APP, select one icon, select sending
2. Sending it successfully, this icons will show on the watch screen .



#### Make friends via Bluetooth

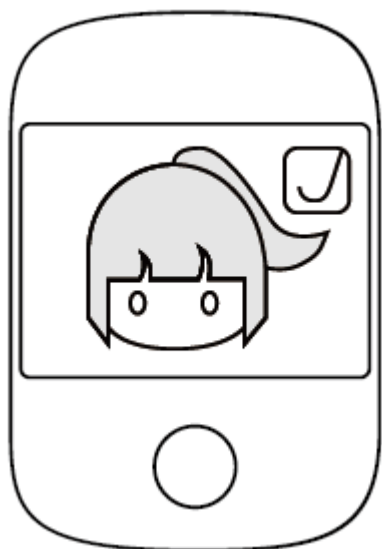
1. Under function interface, enter to the white hand, switch to colorful hand;
2. Within 1M, one watch show white hand, another watch show colorful hand, then can make friends via bluetooth.



Add this friend successfully

3. Add this friend successfully, you can change friend's name on APP;

4. Press friends' avatar shortly to call friend, press friends' avatar long to send voice message.



Watch Parameters:

1. Specifications:

Watch Size	54mm*34mm*16mm( not including strap)
Screen Materials	OLED Color screen, resolution:96*64
Waterproof	Waterproof IP65
Standby Time	96 hours
Battery capacity	500MAH

2. Package:

Watch Device	1 pcs	Power adapter	1 pcs
USB Cable	1 pcs	Gift Card	1 pcs
Warranty Card	1 pcs	Manual	1 pcs
Certification Card	1 pcs	Screen Protector	1 pcs
Screwdriver	1 pcs	Screw	2 pcs

#### 4. Q&A

4.1. How long this watch can working with full charging?

A: Standby time is 2-3 days, need 2-3 hours to charge.

4.2. APP indicate watch is not online?

A: The watch has not connected to the network. Check watch SIM card is install right or not , confirm this Sim card open GPRS function

4.3 Set up family number already, but the phone can' t call watch

A: Please check the watch Sim card opened Caller ID display function.

4.4. Your watch is anti-collision and waterproof?

A: The watch is waterproof IP 65, it is life waterproof, splash or rain is ok , please do not wear the watch when you are taking shower or swimming .

#### **FCC Statement**

Changes or modifications not expressly approved by the party responsible for compliance could void the user's authority to operate the equipment.

This equipment has been tested and found to comply with the limits for a Class B digital device, pursuant to Part 15 of the FCC Rules. These limits are designed to provide reasonable protection against harmful interference in a residential installation. This equipment generates uses and can radiate radio frequency energy and, if not installed and used in accordance with the instructions, may cause harmful interference to radio communications. However, there is no guarantee that interference will not occur in a particular installation. If this equipment does cause harmful interference to radio or television reception, which can be determined by turning the equipment off and on, the user is encouraged to try to correct the interference by one or more of the following measures:

- Reorient or relocate the receiving antenna.
- Increase the separation between the equipment and receiver.
- Connect the equipment into an outlet on a circuit different from that to which the receiver is connected.
- Consult the dealer or an experienced radio/TV technician for help

This device complies with part 15 of the FCC rules. Operation is subject to the following two conditions (1) this device may not cause harmful interference, and (2) this device must accept any interference received, including interference that may cause undesired operation.

# FCC Regulatory Compliance

## Body worn operation

The device complies with RF specifications when used near your ear or at a distance of 0cm from your body. Ensure that the device accessories, such as a device case and device holster, are not composed of metal components. Keep the device away from your body to meet the distance requirement.

## Certification information (SAR)

This device is also designed to meet the requirements for exposure to radio waves established by the Federal Communications Commission (USA). The SAR limit adopted by the USA is 1.6 W/kg averaged over one gram of tissue. The highest SAR value reported to the FCC for this device type complies with this limit. SAR Max. Values:3.08 W/Kg (10g) for extremity; 0.40 W/Kg (1g) for next tomouth