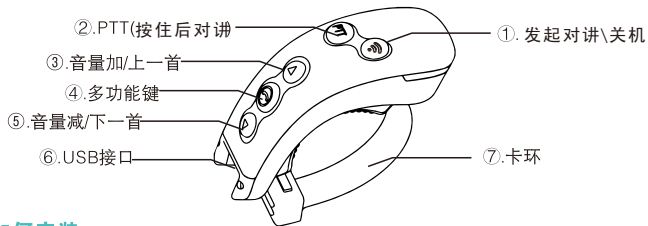
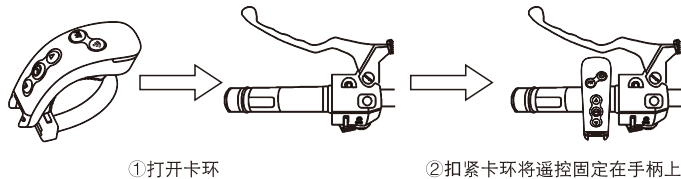


欢迎使用L3遥控器，本产品与遥控版蓝牙接收端完成配对后，可对蓝牙接收端进行无线遥控，遥控器可安装在摩托车手把位置，以使在骑行过程中安全进行蓝牙功能的操作。

1. 遥控面板及按键功能介绍



2. 如何安装



3. 遥控器发射端与接收端配对

(1) 如何与COLO-RC连接:

第一步(COLO接收端操作):

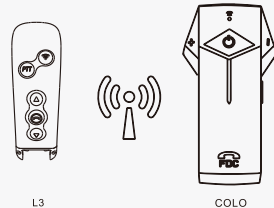
COLO开机状态,快速连续按下COLO的开关机按键,COLO会进入遥控接收端配对状态,接收端配对模式下红色指示灯为常亮状态,接收端配对模式下红色LED灯为常亮,绿色LED等闪烁,配对状态持续1分钟。

第二步(遥控发射端操作):

按住遥控器多功能键后再按住关机按键,配对成功后遥控器会急闪烁3次,配对完后松开两个键,接收端红色指示灯会熄灭。

注意:

COLO配对模式下,如若未完成配对操作COLO会在60S后关闭配对状态,红灯熄灭。



(2) 如何与L1耳机配对:

第一步(L1接收端操作):

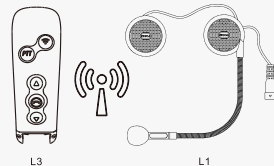
L1开机状态,快速连续按下L1的A键,L1会进入遥控接收端配对状态,接收端配对模式下红色指示灯为常亮状态。

第二步(遥控发射端操作):

按住遥控器多功能键后再按住关机按键,配对成功后遥控器会急闪烁3次,配对完后松开两个键,接收端红色指示灯会熄灭。

注意:

L1配对模式下,如若未完成配对操作L1会在60S后关闭配对状态,红灯熄灭。



(3) 如何与L2适配器连接:

第一步(L2接收端操作):

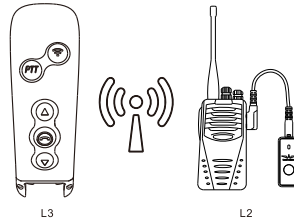
L2开机状态,快速连续按下L2的开关机键,L2会进入遥控接收端配对状态,接收端配对模式下红色指示灯为常亮状态。

第二步(遥控发射端操作):

按住遥控器多功能键后再按住PTT键,配对成功后遥控器会急闪烁3次,配对完成后松开两个按键,接收端红色指示灯会熄灭。

注意:

L2配对模式下,如若未完成配对操作L2会在60S后关闭配对状态,红灯熄灭。



4. 日常保养

- 切勿将遥控器放置在温度极高或极低的地方,最佳存放环境为-10度到+60度,否则会影响耳机的使用寿命;
- 切勿将遥控器暴露在明火之中,避免爆炸危险;
- 切勿将耳机接触尖锐对象,会造成划痕或损坏;
- 切勿尝试拆卸遥控器;
- 如长时间不使用遥控器,请确保放置在干燥的地方,若放置超过一个月要按时给与充电,以保证电池及遥控器的工作性能。

很荣幸为您解答在使用过程中任何问题,您可以通过扫描二维码与我们联系:



5. 技术参数

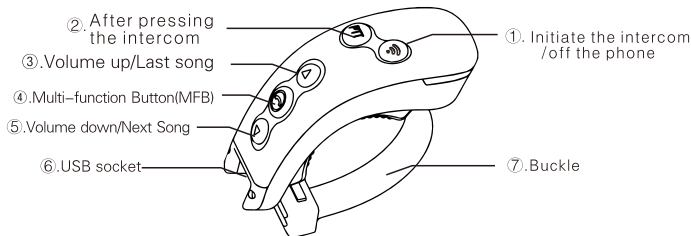
- 充电器规: MICRO USB
- 待机时间: 260D
- 工作时间: 10H
- 电池容量: 55MAH

6. 保修时间: 1年

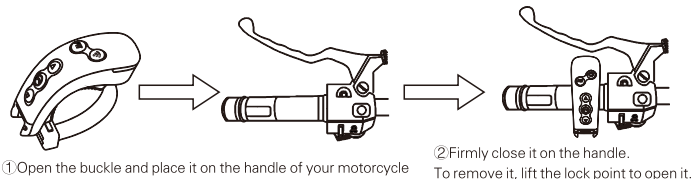


Welcome to use Louis BT Remote advanced wireless control system for your Louis Intercom. The Louis Remote can be mounted to the handlebar of your motorcycle and control all the functions of your BT intercom devices.

1. Control panel and Buttons function description



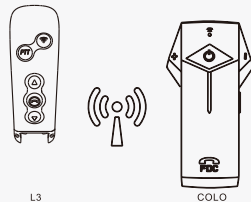
2. How to mount or remove the Remote on the handle



3. Pairing between Remote and Receivers

(1) L3 pairing with COLO:

1st. (Operations on COLO):
Turn on COLO, and fast press "switch on button" three times, then COLO turns into pairing mode: the red LED lights on, and when you release your fingers from L3 it will turn off once pairing finished;
Or the LED will turn off automatically after 1 minute.

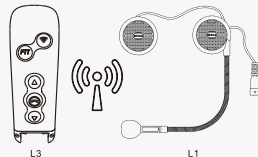


2nd. (Operation on Remote)
Firstly, press "MFB." then press "power off/Pairing Button" (note: don't release the fingers), LED will flash three times fast; it means L3 has been paired with COLO.

(note: (Note: the remote will stay in the turning on status all the time except when it is charging or no power)

(2) L3 pairing with L1:

1st. (Operations on L1):
Turn on L1, and fast press "A button" three times, then L1 turns into pairing mode: the red LED lights on, and when you release your fingers from L3 it will turn off once pairing finished.
Or the LED will turn off automatically after 1 minute;

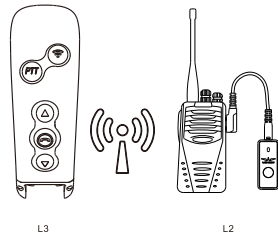


2nd. (Operation on Remote)
Firstly, press "MFB." then press "power off/Pairing Button" (note: don't release the fingers), LED will flash three times fast; it means L3 has been paired with L1.

(3) L3 pairing with L2:

1st. (Operations on L2):
Turn on L2, and fast press "Switch on button" three times, then L2 turns into pairing mode: the red LED lights on(when pairing finished it will turn off after you release fingers from L3. Or the LED will turn off automatically after 1 minute.), and when you release your fingers from L3 it will turn off once pairing finished.
Or the LED will turn off automatically after 1 minute;

2nd. (Operation on Remote):
Firstly, press "MFB." then press " PTT Button " (note: don't release the fingers), LED will flash three times fast; it means L3 has been paired with L1.



4. About Maintenance

- (1) Keep away from the extremely high (or low) temperature, the best storage environment is -10 to +60 degree, or will reduce the life time of devise.
- (2) Keeps away from the fire.
- (3) Keeps away from the sharp object, it may cause scratches or damage on the product.
- (4) Do not try to disassemble the Remote.
- (5) For a long time without using, please put the remote at a dry place, and make sure one charging per month in order to guarantee the performance.

It is our pleasure to solve any issues for you when you are in the process of using this product. You can contact us by scanning the following D bar code.

5. Technical data sheet

- (1), Micro USB
- (2), Standby Time: 260 days
- (3), Working Time: 10 hours
- (4), Battery Type: Rechargeable polymer 55mAh

6. Warranty: 1 Year



NOTE: This equipment has been tested and found to comply with the limits for a Class B digital device, pursuant to part 15 of the FCC Rules. These limits are designed to provide reasonable protection against harmful interference in a residential installation. This equipment generates, uses and can radiate radio frequency energy and, if not installed and used in accordance with the instructions, may cause harmful interference to radio communications. However, there is no guarantee that interference will not occur in a particular installation. If this equipment does cause harmful interference to radio or television reception, which can be determined by turning the equipment off and on, the user is encouraged to try to correct the interference by one or more of the following measures:

- Reorient or relocate the receiving antenna.
- Increase the separation between the equipment and receiver.
- Connect the equipment into an outlet on a circuit different from that to which the receiver is connected.
- Consult the dealer or an experienced radio/TV technician for help.

This device complies with part 15 of the FCC rules. Operation is subject to the following two conditions:

- (1) this device may not cause harmful interference, and
- (2) this device must accept any interference received, including interference that may cause undesired operation.

Changes or modifications to this unit not expressly approved by the party responsible for compliance could void the user's authority to operate the equipment.