

SIZE: 99x135mm

80克铜版纸 打钉

INSTRUCTION *MANUAL* >>



6-way Conference Intercom System



T-MAX

English

français

Español

Italiano

Deutsch

Русский

日本語

Table of Content

1. Introduction	3
1.1 Main Functions	3
2. Pack Content	3
3. Installation Procedure	4
3.1 Adopt installation method with plastic clamp	4
3.2 Adopt installation method with VELCRO clamp	5
4. Disassembly of Bluetooth Device	5
5. Function Illustration	6
6. Introduction and Function of Buttons.....	7
6.1 Multi-function/ On/off button and talkback button	7
6.2 Multi-functional Button	7
6.3 Knob	8
7. Pairing Procedure	9
7.1 Pairing with Mobile Phone, Mp3 and GPS	9
7.2 Pairing with (FreedConn) L2 Adaptor	9
7.3 Pairing between two T-Max	9
7.4 Group Talk Settings (6 people)	10
7.5 Operation Mode for case When a Party Receives a Call DuringGroup Intercom	11
7.6 Connect with Multiple Devices	11
8. Priority of Functions	12
9. Technical Parameters of Product	12
10. Indication of Battery Volume	12

1.Introduction

Thank you for choosing FreedConn T- Max Motorcycle Bluetooth Communication System.

T- Max is a Full Duplex Group Talk Bluetooth System, applying humanized design, integrating the cutting edge technology of all similar products and becoming a perfect motorcycle communication system. It can satisfy all kinds of needs in your journey, such as wireless dialling, receiving calls, listening to Mp3 music, receiving GPS voice prompt and connecting with handheld interphone. The most important is that it can realize group talk among motorcycles, providing you convenient communication with your teammates throughout the ride.

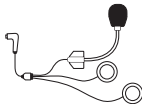
1.1 Main Functions

1. Number of intercom users: 6people
2. Bluetooth intercom range: 1500 m
3. Multiple devices connected simultaneously
4. wireless connection with two-way radio
5. Built-in FM radio
6. Voice prompt
7. Usable during recharging

2. Pack content



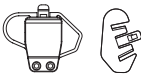
❶ Bluetooth Device



❷ Microphone & Speakers



❸ USB Cable



❹ clip



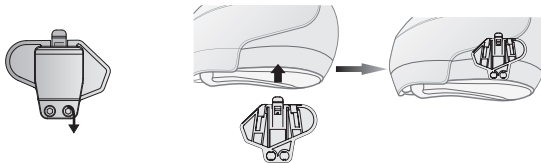
❺ Headphone VELCRO



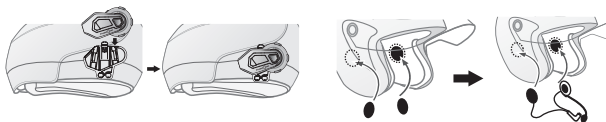
❻ Screw Driver

3. Installation Procedure

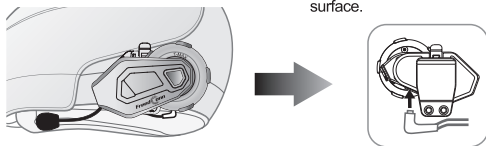
3.1 Adopt installation method with plastic clamp



- 1 Loosen the screws on the back of clamp with the provided screw driver.
- 2 Open the lining of helmet, insert the clamp in the proper position on the left of helmet and fasten the screw (overly fastened screw can damage the clamp)

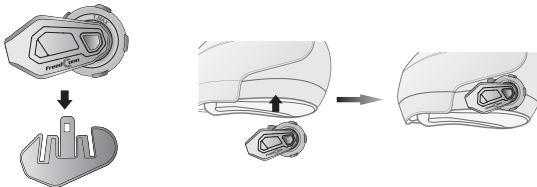


- 3 Slide the receiver down into the slots on the headset clamp mount. Make sure that it is locked in securely.
- 4 open the lining of helmet (at ear's position), clean the EPS surface and affix the Velcro on with the rough surface.
- 5 Affix the hook surface of speaker to the rough surface of VELCRO and properly tidy the helmet lining.



- 6 Insert the headphone plug into the corresponding headphone jack on the receiver to finish the installation.

3.2 Adopt installation method with VELCRO clamp



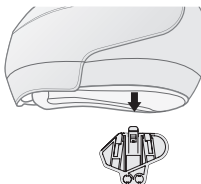
- 1 Install the device on clamp
- 2 Tear off the white paper on clamp and stick the device onto helmet

Refer to step 3 4 5 of step 3.1

4. Disassembly Of Bluetooth Device

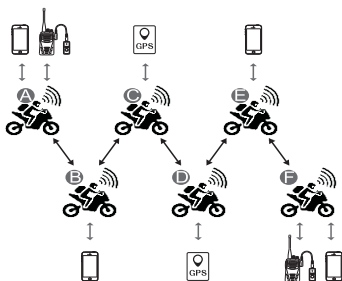


- 1 Remove the headphone
- 2 Remove the device from clamp (along the arrow direction in figure)



- 3 Remove the clamp from helmet (along the arrow direction in figure)

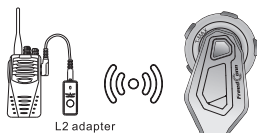
5.Function illustration



- ① A 1,500 m intercom range, 6 users connection, connectable to multiple devices at the same time (cell phone, GPS, L2 adapter).



- ② Can be connected simultaneously with 2 mobile phones to call out, answer calls, reject calls, hang up, voice dial and play music



- ③ Can be connected with two-way radio through Bluetooth adaptor



- ④ Rechargeable battery (usable during recharging)



- ⑤ Radio function



- ⑥ Voice prompt



- ⑦ Noise analogue modulation



- ⑧ Water-proof

6.Functions and operation of buttons

6.1 Multi-function/ On/off button and talkback button



- 6.1.1 On
- 6.1.2 Off
- 6.1.3 Start the bluetooth intercom
- 6.1.4 End the bluetooth intercom
- 6.1.5 Switch between intercom and music
- 6.1.6 Clear the pairing record

6.1.1	Press and hold the multi-functional button for about 3 s until you hear a prompt voice "welcome to use FreedConn product" and the blue lamp will flash three times quickly before flashing regularly. Automatic reporting of current battery volume.
6.1.2	Press and hold the multi-functional button until you hear "Shutdown" prompt voice. Blue indicator lamp dies out.
6.1.3	Swiftly press either one of the multi-functional buttons of the two matched Bluetooth interphones.
6.1.4	Swiftly press the multi-functional button during intercom.
6.1.5	Swiftly press the multi-functional button shortly when listening to music.
6.1.6	Press "OFF" and you can see red lamp lighten (after you hear the shutdown prompt voice), hold the button for another 3 s and you can see the red lamp flash quickly for three times (with a "dudu" prompt voice), indicating clearing is successful, then the device is shutdown (addresses are not cleared in normal shutdown of pressing and holding button for 5 s).

6.2 Multi-functional Button (FMB)



- 6.2.1 Answer calls
- 6.2.2 Reject calls
- 6.2.3 Switch between phone and T-MAX headset
- 6.2.4 End the call
- 6.2.5 Voice dialling
- 6.2.6 Play/Pause music

6. 2. 1	Press one time and you will hear a "receiving calls" prompt voice. If no operation is conducted within 15 s of incoming ring, it will be answered automatically.
6. 2. 2	Press and hold for 2 s when hearing the ring until you hear a beep.
6. 2. 3	Press and hold for 2 s until you hear a beep.
6. 2. 4	Press one time or use normal cell phone to end talk.
6. 2. 5	Press and hold for 2 s until you hear a "voice call" prompt.
6. 2. 6	Turn the MFB button for 2 s when playing music until hearing a beep.

6.3 Knob



- 6.3.1 FM Control
- 6.3.2 Volume control in FM
- 6.3.3 FM Tuning
- 6.3.4 Next track
- 6.3.5 Music volume control

6. 3. 1	Turn the MFB button for 2 s with no call or intercom until hearing a beep.
6. 3. 2	During radio state of FM, turn the button one step clockwise to change volume for one level and a beep will be heard when reaching T-Max volume (press it once more, max volume will remain. Press it for the third time, volume will return to minimum) (cycle).
6. 3. 3	During radio state of FM, turn the MFB button counterclockwise to shift to a next higher FM channel (cycle).
6. 3. 4	Turn MFB button once to switch to next track during music playing (cycle).
6. 3. 5	During talk/intercom, turn the button once counterclockwise to lower volume and you will hear beep when reaching min volume. Turn the button once clockwise to increase volume and you will hear beep when reaching max volume.

7.Match the way

7.1 Pair with Mobile Phone, Mp3 and GPS



Step 1: Ensure T-MAX is off and within 1 m visible range of the device to be paired.

Step 2: Press down the T-MAX On/Off/Intercom button for 8s until you hear "Pairing" prompt, when the red light and blue light flash alternatively, T-MAX enters pairing status.

Step 3: Start up the Bluetooth in device to be matched, search and choose a T-MAX for matching and you will hear a "Bluetooth is connected" prompt voice. When the blue lamp flashes regularly, matching is successful.

7.2 Pair with (Freed Conn) L2 Adaptor



ON/OFF Button

L2 Adaptor

step1: Ensure T-MAX is at OFF state, T-MAX and L2 are put within a 1m visible range.

step2: Press and hold the ON/OFF button of T-MAX for 8s until hearing a "matching status" prompt voice; Now the blue lamp and red lamp flash alternatively and T-MAX enters matching state.

step3: Press and hold the ON/OFF button of adaptor for 6s, L2 enters automatic searching and matching state, when blue indicator lamp of T-MAX and L2 both flash regularly, matching is successful.

7.3 Matching between Two T-MAX



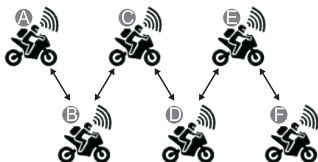
step 1: Ensure two T-MAX are both at OFF state and put within a 1m visible range.

step 2: Press and hold the ON/OFF buttons of both two T-MAX for 8 s until hearing a "matching status" prompt voice; Now the blue lamp and red lamp flash alternatively and both two T-MAX enter matching state.

Note: If they cannot enter red/blue lamp alternative flashing state, please clear the matching record, and then repeat above steps.

step 3: Press the ON/OFF button of one of the T-MAX and it will automatically search another T-MAX for matching. You will hear a prompt voice. When the blue lamp flashes regularly, matching is successful.

7.4 Group talk settings(6people)



Note: The foremost and backmost cyclers (shown as A and F in figure) are not allowed to be paired.



step1: Clear the matching record between A, F. Press and hold the ON/OFF buttons of A, F for 8 s until hearing a “shutdown” prompt voice, then hold the button for another 3 s.

step2: Refer to the matching method in 7.3 for following operations.

1. A matches with B and shutdown B after matching; (note: shutdown without clearing matching record)
 2. B matches with C and shutdown C after matching;
 3. C matches with D and shutdown D after matching;
 4. D matches with E and shutdown E after matching;
 5. E matches with F.
- (now A, B, C, D, E, F are all on)

step3: Connect A, B, C, D, E, F in tandem arrangement.

1. Press the ON/OFF button of D to connect to E, you will hear a intercom prompt voice;
2. Press the ON/OFF button of C to connect to D, you will hear a intercom prompt voice;
3. Press the ON/OFF button of B to connect to C, you will hear a intercom prompt voice;
4. Press the ON/OFF button of A to connect to B, you will hear a intercom prompt voice;

(now A, B, C, D, E, F are successfully connected and you can use group talk)

7.5 Operations for when someone receives a call during group Intercom

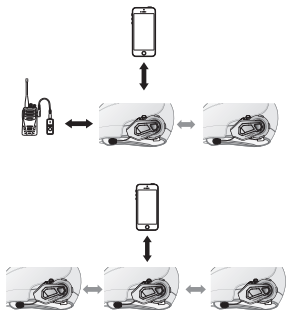
During 6 people group Intercom, C receives a call, he or she will be disconnected from other group members (A pairs with B to form a group, C forms its own group, DEF form a group).



After C's call is over, he or she will be reconnected into the group talk and the 6 people group talk resumes.

7.6 Connect with multiple devices

The group member can connect to multiple devices (mobile phones, GPS and adaptors) when connecting with the group



1. Foremost and backmost members of the group (A and F) can connect with any two devices of mobile phones, GPS or adaptors apart from connecting with one group member.
2. Members in the middle of group (B, C, D, E) can connect with any one device of mobile phones, GPS or adaptors apart from connecting with 2 group members.

8. Priority of functions

Level 1: Phone Call / Two-way radio audio introduced by adaptor

Level 2: Bluetooth Intercom

Level 3: Music/FM radio

Analysis:

1. During a call, two-way radio intercom / Bluetooth intercom / music / FM radio are all not operable. But there will be a prompt tone upon the coming of two-way radio intercom invitation and Bluetooth intercom invitation.
2. During an two-way radio intercom, Bluetooth intercom, music and FM radio are all not operable. But there will be a prompt tone upon the coming of Bluetooth intercom.
3. During Bluetooth intercom, music and FM radio are not operable.

9. Technical parameters of product

Frequency: 2.4 GHZ

Weight: 55.2 g

Size: 88x53x31mm

Battery volume: 570 mAh

Standby : 1 week

Talking time:

11 h of mobile phone

9.5 h of Bluetooth Intrecom

Charging time: About 2.5 h

Travel Adaptor: DC 5V 500mA

10. Indication of battery volume

Polymer Batteries are used in this product, so please put it in dry places. Recharge the battery after more than 1 month of storage to achieve the service life of product.

1. If the battery volume is full, the blue light will flash one time every 2 seconds when the device is on.
2. Alarm will be intrigued when the battery is running low. Alarm will be prompted every 15 seconds (the voice of "Battery low" and red light flashes every 15 seconds).Continuous use will lead to auto-shutdown.
3. The red light is always lit up when it's charged.After the battery is fully charged, the red light is off. Red light will be on during recharging and die out when the battery is full.
4. The product is available for use during charging.

NOTE: This equipment has been tested and found to comply with the limits for a Class B digital device, pursuant to part 15 of the FCC Rules. These limits are designed to provide reasonable protection against harmful interference in a residential installation. This equipment generates uses and can radiate radio frequency energy and, if not installed and used in accordance with the instructions, may cause harmful interference to radio communications. However, there is no guarantee that interference will not occur in a particular installation. If this equipment does cause harmful interference to radio or television reception, which can be determined by turning the equipment off and on, the user is encouraged to try to correct the interference by one or more of the following measures:

- Reorient or relocate the receiving antenna.
- Increase the separation between the equipment and receiver.
- Connect the equipment into an outlet on a circuit different from that to which the receiver is connected.
- Consult the dealer or an experienced radio/TV technician for help

Changes or modifications not expressly approved by the party responsible for compliance could void the user's authority to operate the equipment. This device complies with Part 15 of the FCC Rules. Operation is subject to the following two conditions:

- (1) this device may not cause harmful interference, and
- (2) this device must accept any interference received, including interference that may cause undesired operation.