

XYBA



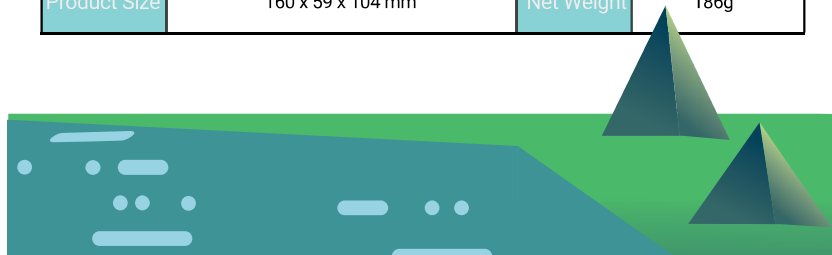
Matricom

## introduction

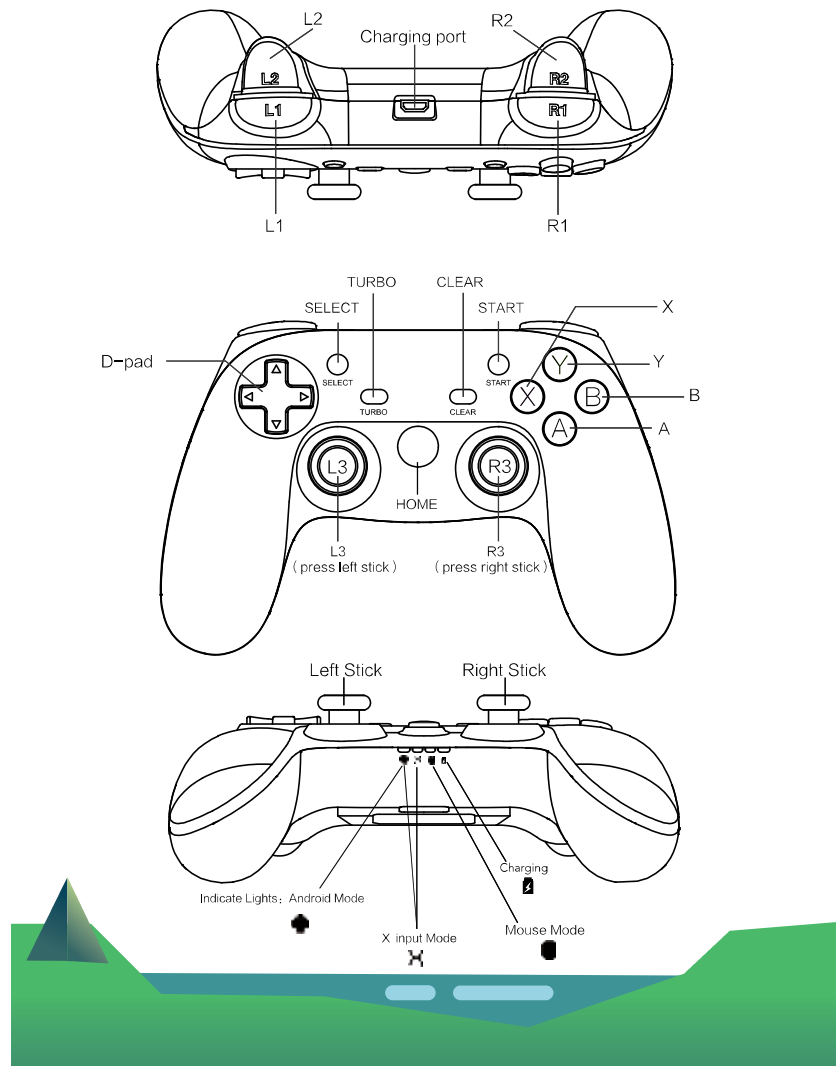
The XYBA connects by bluetooth and can connect to Android devices (4.0 and above), computers, and PlayStation 3 consoles. This gamepad will automatically configure itself depending on the device it's connected to!

## specifications

Product Name	Sync Wireless Gamepad	Model No.	Gpad XYBA
Working Platforms	Android / PC / PS3	Working Temp.	-20°C ~ 65°C
		Working Humidity	20 ~ 80%
Working Modes	Android Standard / PS3 / Mouse Simulation / Xinput	Connection Types	Bluetooth/ wired
Charging Voltage	3.7 V ~ 5.2 V	Charging Time	2 ~ 3 H
Charging Current	1A ~ 2A	Working Distance	Approx. 7 M
Box Size	205 x 180 x 90 mm	Battery Capacity	600 mA
Product Size	160 x 59 x 104 mm	Net Weight	186g



# layout



## functions

### Power On/Off

#### **Power On**

Hold the Home button for 2 seconds to power on.

#### **Power Off**

Hold the Home button for 5 seconds to power off.

### Low Battery Indicator

The fourth LED light will flash once per second

#### **1. Charging during use**

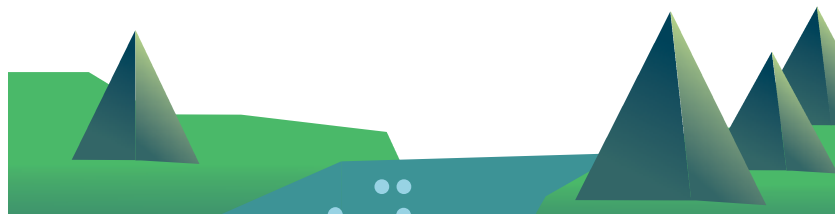
When connected the fourth LED will flash once per second. Once the fourth light is solid, the XYBA is fully charged.

#### **2. Charging during sleep**

When connected to the charging cable, the XYBA will enter the last mode. If no input is received, the lights will turn off and the fourth LED will flash once per second. Once the fourth light is solid, the XYBA is fully charged.

### Sleeping Function


The XYBA will enter sleep state after a 1 minute of being disconnected from a charging cable or 5 minutes of no input.



## gamepad connection

### Android Platform


#### Connection Method

- a. Open the Bluetooth Settings menu on your Android device.
- b. Hold the X and Home buttons for 2 seconds until the  indicator light flashes.
- c. On the Android device, connect to the XYBA Gamepad.
- d. When the first light remains solid, the XYBA is connected!

#### Mouse Emulation

Mouse emulation allows the XYBA to act like a typical computer mouse. The left joystick moves the cursor, the A button acts as the left mouse button, and the B button acts as the right mouse button.

#### Enter Mouse Mode

While the XYBA is connected, press the X and Select buttons. This light  indicates you are in Mouse Mode.

#### Exit Mouse Mode

Press the X and Select buttons. The  light will flash.



#### Android Mode Only

Press B and Home button for 2 seconds. You will not have Mouse Mode functionality in this mode.



## Smart TV / TV Box

### Connection Method

Connect through Bluetooth. Press A and Home button for 2 seconds until the  indicator light flashes. You are connected successfully when the  indicator light remains solid.

## PS3 Platform

### Connection Method

Press Turbo and Home buttons to enter PS3 pairing mode. Four indicator lights at the bottom will flash. Using the supplied USB cable, connect one end to the controller and one end to the PS3. Once both ends are connected, the XYBA will connect to the PS3.

## Auto Reconnection

The XYBA has a built in function to auto connect to a previously paired device. Make sure the device's bluetooth is on and press the Home button on the XYBA. Wait 2 seconds and the device will reconnect!

## PC

### Connection Method

Connect using the wired connection method.



## wired connection method

The XYBA has the ability to function through a wired connection. Simply connect the XYBA with a USB cable to your device.

## turbo function

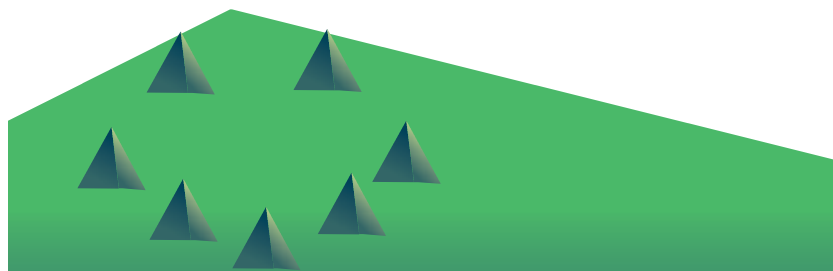
TURBO allows you to set a key to continuously press.

### Set Turbo

Press and hold the desired button(s) for Turbo and then press the Turbo button to set Turbo. **Note:** Turbo excludes the D-Pad, joysticks, SELECT, or START buttons.

### Clear Turbo

Press and hold the desired button(s) for Turbo and then press the Clear button to clear Turbo.



This device complies with part 15 of the FCC Rules. Operation is subject to the following two conditions: (1) this device may not cause harmful interference, and (2) this device must accept any interference received, including interference that may cause undesired operation.

Any changes or modifications not expressly approved by the party responsible for compliance

could void the user's authority to operate the equipment.

NOTE: This equipment has been tested and found to comply with the limits for a Class B digital device, pursuant to Part 15 of the FCC Rules. These limits are designed to provide reasonable protection against harmful interference in a residential installation. This equipment generates, uses and can radiate radio frequency energy and, if not installed and used in accordance with the instructions, may cause harmful interference to radio communications. However, there is no guarantee that interference will not occur in a particular installation.

If this equipment does cause harmful interference to radio or television reception,

which can be determined by turning the equipment off and on, the user is encouraged to try to correct the interference by one or more of the following measures:

- Reorient or relocate the receiving antenna.
- Increase the separation between the equipment and receiver.
- Connect the equipment into an outlet on a circuit different from that to which the receiver is connected.
- Consult the dealer or an experienced radio/TV technician for help.

The device has been evaluated to meet general RF exposure requirement. The device can be used in portable exposure condition without restriction.

FCC ID: 2AEBYEG-C3059E