

3.2.1.2 “BarCode” Tab:

Select the barcode symbologies you plan to scan from the list. Tap to enable/disable the desired symbologies.

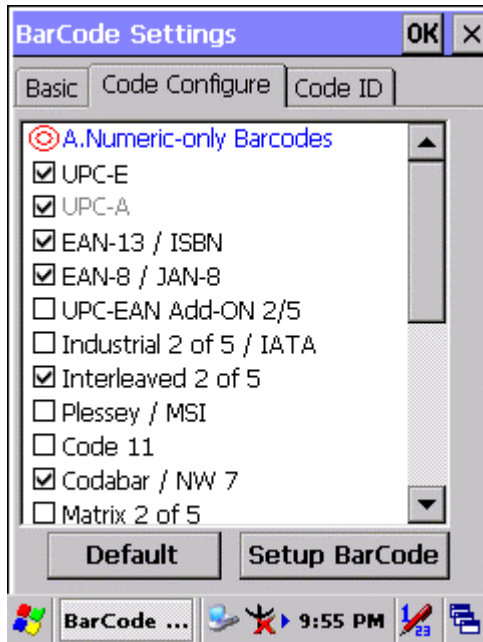


Figure 3-3 Code Configure Tab

Table 3-2 Code Configure Explaining

Barcode Symbology	Explaining
Type A. Numeric-only Barcodes	
<input checked="" type="checkbox"/> UPC-E	Compressed version of UPC code for use on small products.
<input checked="" type="checkbox"/> UPC-A	Universal product code seen on almost all retail products in the USA and Canada.
<input checked="" type="checkbox"/> EAN-13 / ISBN	EAN-13: European Article Numbering international retail product code. ISBN: Special use of the EAN-13 symbol to used internationally to mark books.
<input checked="" type="checkbox"/> EAN-8 / JAN-8	Compressed version of EAN code for use on small products.
<input type="checkbox"/> UPC-EAN Add-ON 2/5	UPC-A, UPC-E, EAN-13, and EAN-8 may all include an additional barcode to the right of the main barcode. This second barcode, which is

		usually not as tall as the primary barcode, is used to encode additional information for newspapers, books, and other periodicals.
<input type="checkbox"/>	Industrial 2 of 5 / IATA	Older code not in common use.
<input type="checkbox"/>	Interleaved 2 of 5	Compact numeric code, widely used in industry, air cargo, other applications.
<input checked="" type="checkbox"/>	Plessey / MSI	Plessey: Older code commonly used for retail shelf marking. MSI: Variation of the Plessey code commonly used in USA.
<input checked="" type="checkbox"/>	Code 11	Used primarily for labeling telecommunications equipment.
<input checked="" type="checkbox"/>	Codabar / NW 7	Older code often used in library systems, sometimes in blood bank.
<input type="checkbox"/>	Matrix 2 of 5	Used in miscellaneous industrial applications, and mechanical numbering systems.
Type B. Alphanumeric Barcodes		
<input checked="" type="checkbox"/>	Code 39 / Code32	General-purpose code in very wide use world-wide.
<input type="checkbox"/>	Code 93	Compact code similar to Code 39.
<input checked="" type="checkbox"/>	Code 128	Very capable code, excellent density, high reliability; in very wide use world-wide.
Type C. Others Barcodes		
<input type="checkbox"/>	China Post	Used by China Postal Service for automated mail sorting.
<input type="checkbox"/>	Code 4	---
<input type="checkbox"/>	GTIN	Global Trade Identification Number
<input type="checkbox"/>	Korea Code 3 of 5	---
<input type="checkbox"/>	UCC EAN-128	Widely used data formatting model for Code 128.

3.2.1.3 “Code ID” Tab:

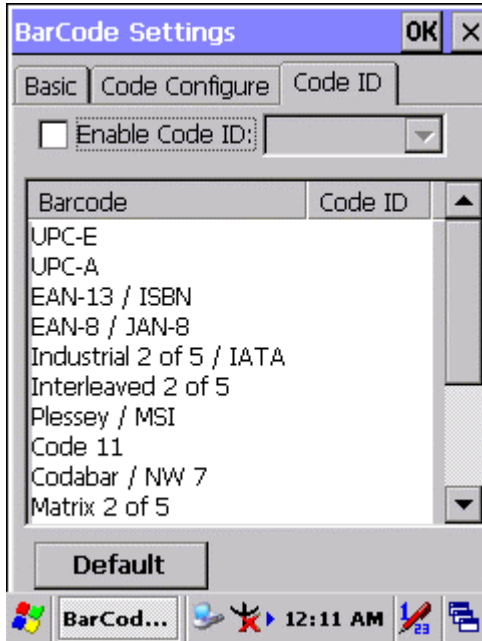


Figure 3-4 Code ID Tab

Table 3-3 Code ID Explaining

Code ID is added into prefix of the barcode and let user identify which kind of barcode being scanned.	
<input type="checkbox"/> Enable Code ID	Enable this functionality.
Set 1 ~ Set 5	Select one default value by Set 1 ~ Set 5. (See the “ Table 3-4 Code ID Set1-Set5 Table ”)
User Define	Establish number by oneself.
Barcode List	Set 1 ~ Set 5: defaults setting. User Define: select barcode to define.
Default	Press “Default” button to reset all configuration setting of “Code ID” Tab into default values.

Table 3-4 Code ID Set1-Set5 Table

	Set 1	Set 2	Set 3	Set 4	Set 5
UPC-E	S	E	C	E	E
UPC-A	M	A	A	A	E
EAN-13 / ISBN	M	A	A	F	E
EAN-8 / JAN-8	P	B	B	F	E

	Set 1	Set 2	Set 3	Set 4	Set 5
Industrial 2 of 5 / IATA	C	H	H	H	S
Interleaved 2 of 5	D	I	Z	I	S
Plessey / MSI	V	V	D	P	M
Code 11	J	J	J	J	J
Codabar / NW 7	F	N	X	N	F
Matrix 2 of 5	E	G	G	G	S
Code 39 / Code 32	A	C	Y	M	A
Code 93	I	L	L	L	G
Code 128	H	K	K	K	C
Code 4	U	U	U	U	U
Korea Code 3 of 5	R	R	R	R	R
UCC EAN-128	W	W	W	W	W

3.2.1.4 BarCode Setup

- A. First select barcode type then select barcode to setting.
- B. Press “**Default**” button to reset all configuration setting of this barcode into default values.
- C. Press “**Apply**” button to be decided setting of this barcode.

Please see 3.2.2 Symbologies List for more detail information of each Barcode.

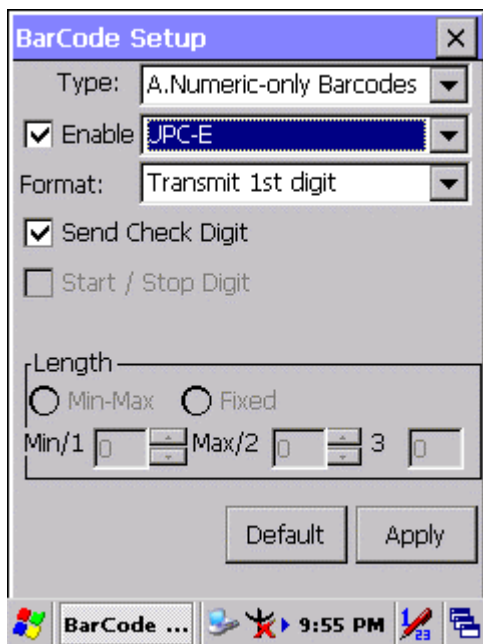


Figure 3-5 BarCode Setup

3.2.2 Symbologies List

A Type -- Numeric-only Barcodes

3.2.2.1 UPC-E

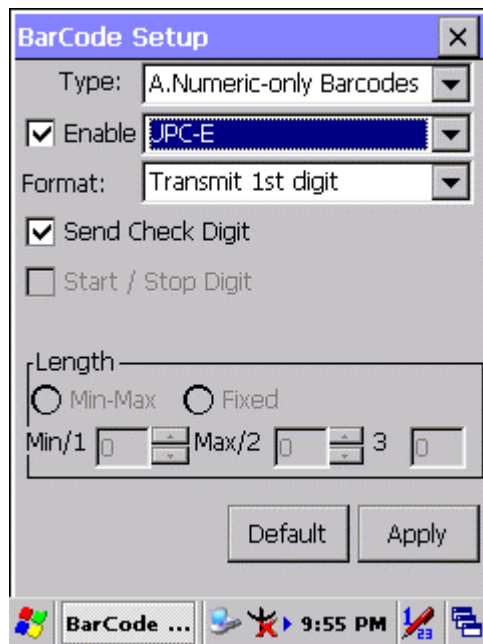


Figure 3-6 UPC-E

Table 3-5 UPC-E Explaining

Item		Explaining
Format	Ignore 1st digit	Do not transmit 1st digit by barcode.
	Transmit 1st digit	Transmit 1st digit by barcode.
<input checked="" type="checkbox"/>	Send Check Digit	Whether send check digit by barcode.