

3.2.2.2 UPC-A

UPC-A movements together with EAN-13, so only Enable EAN-13 then UPC-A will be Enable, too.

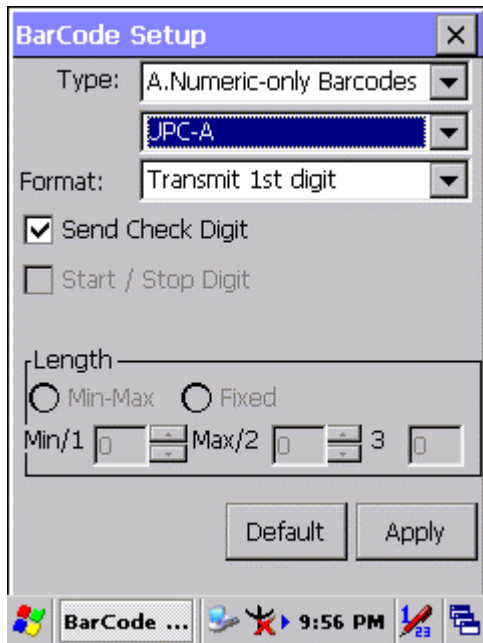


Figure 3-7 UPC-A

Table 3-6 UPC-A Explaining

	Item	Explaining
Format	Ignore 1st & 2nd digits	Do not transmit 1st digit by barcode.
	Transmit 1st digit	Transmit 1st digit by barcode.
	Transmit 2nd digit	Transmit 2nd digit by barcode.
	Transmit 1st & 2nd digits	Transmit 1st & 2nd digits by barcode.
<input checked="" type="checkbox"/>	Send Check Digit	Whether send check digit by barcode.

3.2.2.3 EAN-13 / ISBN

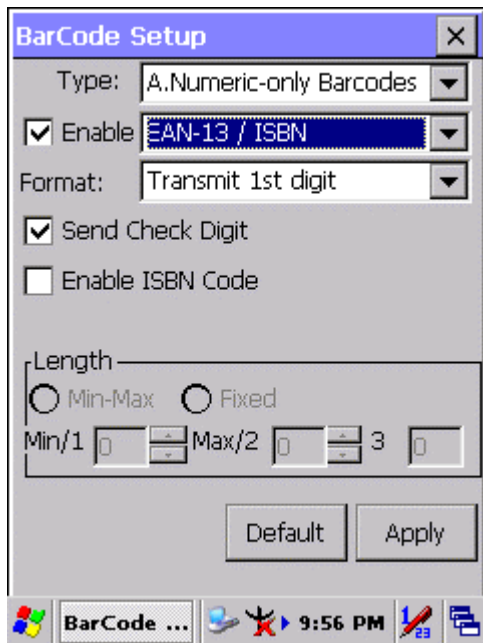


Figure 3-8 EAN-13 / ISBN

Table 3-7 EAN-13 / ISBN Explaining

	Item	Explaining
Format	Ignore 1st & 2nd digits	Do not transmit 1st digit by barcode.
	Transmit 1st digit	Transmit 1st digit by barcode.
	Transmit 2nd digit	Transmit 2nd digit by barcode.
	Transmit 1st & 2nd digits	Transmit 1st & 2nd digits by barcode.
<input checked="" type="checkbox"/>	Send Check Digit	Whether send check digit by barcode.
<input type="checkbox"/>	Enable ISBN Code	Whether use this ISBN Code.

3.2.2.4 EAN-8/JAN-8

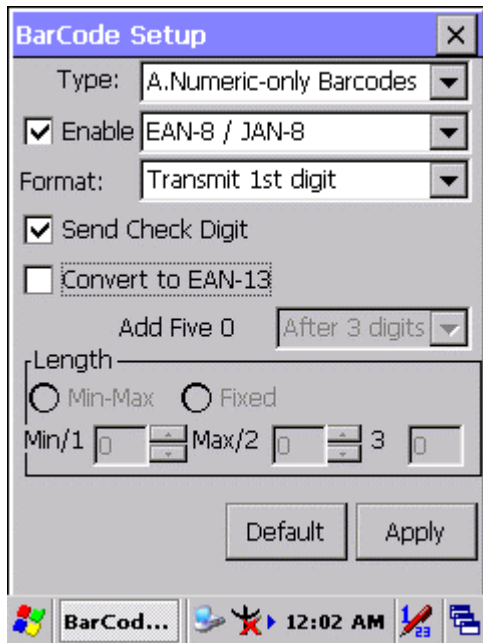


Figure 3-9 EAN-8/JAN-8

Table 3-8 EAN-8/JAN-8 Explaining

Item		Explaining	
Format	Ignore 1st digit	Do not transmit 1st digit by barcode.	
	Transmit 1st digit	Transmit 1st digit by barcode.	
<input checked="" type="checkbox"/>	Send Check Digit	Whether send check digit by barcode.	
<input type="checkbox"/>	Convert to EAN-13	When this option is selected the scanner will convert UPC-E to UPC-A by transmitting five zeroes ...	
	Add five 0	Ahead of code	Add five zeroes at prefix of the barcode.
		After 3 digits	Add five zeroes from 4th digits.

3.2.2.5 UPC-EAN Add on 2/5

- A. UPC-E, UPC-A, EAN-13 / ISBN and EAN-8 / JAN-8 may all include an additional barcode to the right of the main barcode.
- B. This barcode will show primary & additional code together.
- C. So the UPC-EAN Add-ON 2/5 code is unable to use alone, must operate in UPC-E or UPC-A or EAN-13 / ISBN or EAN-8 / JAN-8.

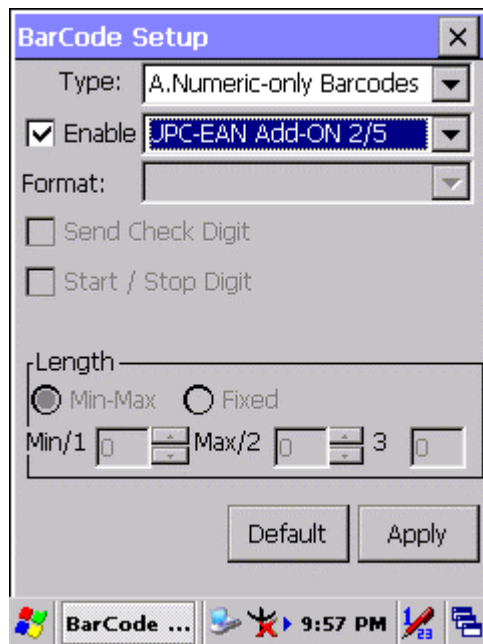


Figure 3-10 UPC-EAN Add on 2/5

3.2.2.6 Industrial 2 of 5 / IATA

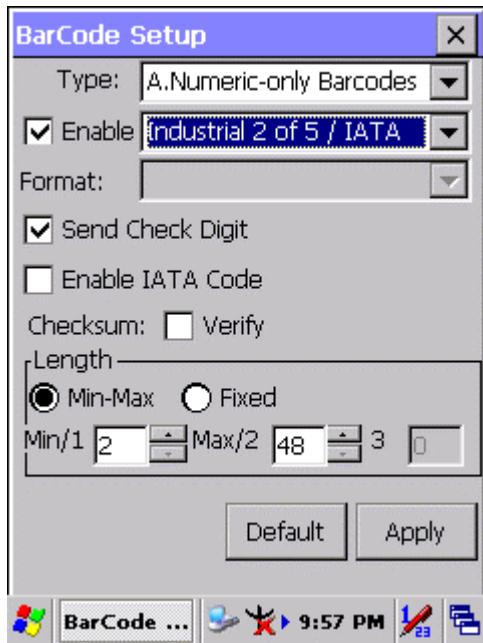


Figure 3-11 Industrial 2 of 5 / IATA

Table 3-9 Industrial 2 of 5 / IATA Explaining

Item		Explaining
<input checked="" type="checkbox"/>	Send Check Digit	Whether send check digit by barcode.
<input type="checkbox"/>	Enable IATA Code	Whether use this IATA Code.
Checksum	<input type="checkbox"/> Verify	Whether verify checksum by barcode.
Length	<input checked="" type="radio"/> Min-Max (Default: 2 / 48)	Min Length can be set from 2 to 48
		Max Length can be set from 2 to 48
	<input type="radio"/> Fixed	Length 1 can be set from 2 to 48
		Length 2 can be set from 2 to 48
		Length 3 can be set from 2 to 48