

### 3.2.2.7 Interleaved 2 of 5

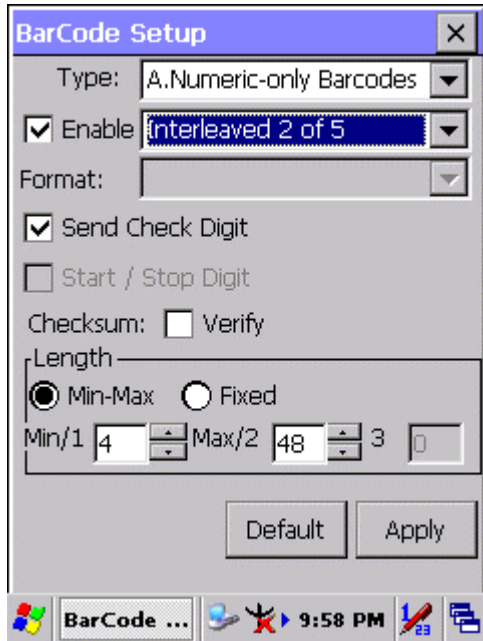


Figure 3-12 Interleaved 2 of 5

Table 3-10 Interleaved 2 of 5 Explaining

Item		Explaining
<input checked="" type="checkbox"/>	Send Check Digit	Whether send check digit by barcode.
Checksum	<input type="checkbox"/> Verify	Whether verify checksum by barcode.
Length	<input checked="" type="radio"/> Min / Max (Default: 4 / 48)	Min Length can be set from 2 to 48 Max Length can be set from 2 to 48
	<input type="radio"/> Fixed	Length 1 can be set from 2 to 48
		Length 2 can be set from 2 to 48 Length 3 can be set from 2 to 48

### 3.2.2.8 Plessey / MSI

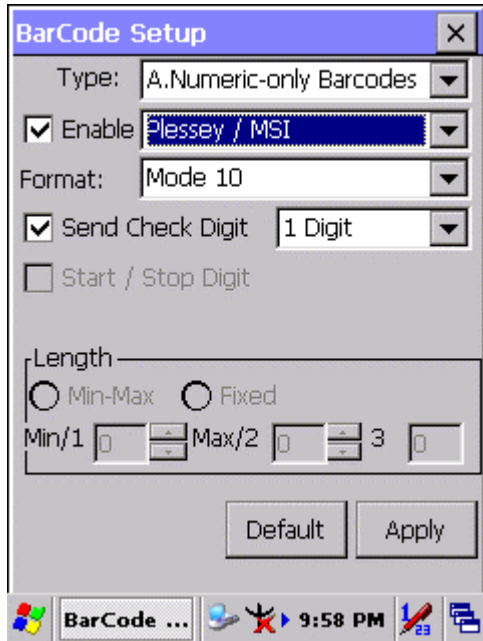


Figure 3-13 Plessey / MSI

Table 3-11 Plessey / MSI Explaining

Item		Explaining
Format	<b>Mode 10</b>	Checksum mode for this barcode.
	Mode 10-10	
	Mode 11-10	
<input checked="" type="checkbox"/> Send Check Digit	<b>1 Digit</b>	Whether send check digit by barcode.
	<b>1 Digit</b>	Check 1 digit & send by checksum.
	2 Digits	Check 2 digits & send by checksum.

### 3.2.2.9 Code11

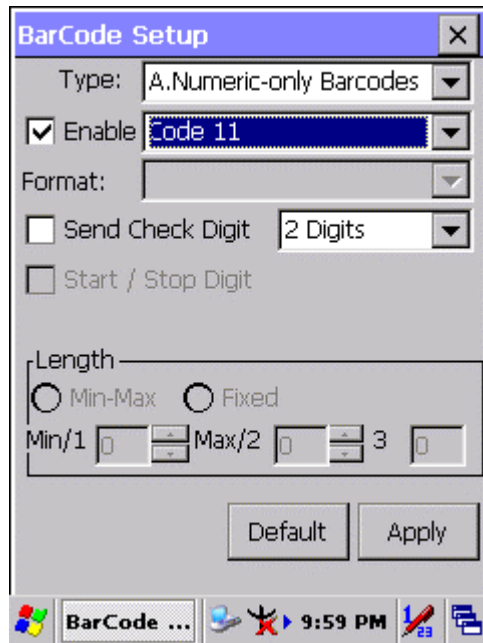


Figure 3-14 Code 11

Table 3-12 Code 11 Explaining

Item	Explaining
<input type="checkbox"/> Send Check Digit	Whether send check digit by barcode.
<div style="margin-left: 20px;">1 Digit</div>	Check 1 digit & send by checksum.
<div style="margin-left: 20px;"><b>2 Digits</b></div>	Check 2 digits & send by checksum.

### 3.2.2.10 Codabar / NW7

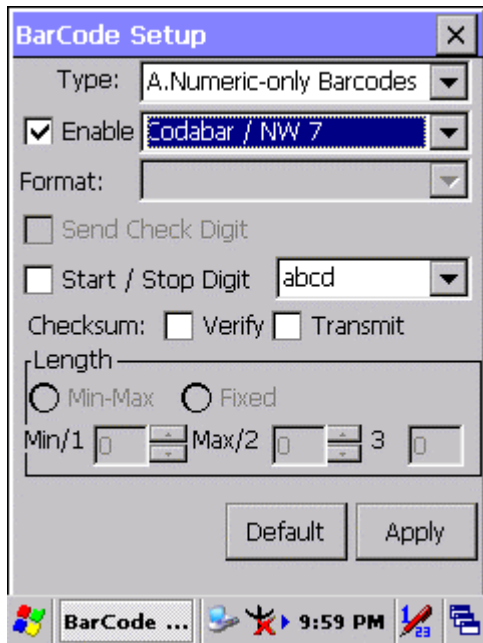


Figure 3-15 Codabar / NW7

Table 3-13 Codabar / NW7 Explaining

Item	Explaining				
<input type="checkbox"/> Start / Stop Digit <table border="1" data-bbox="507 1205 772 1397"> <tr> <td data-bbox="507 1205 772 1256">ABCD</td> <td data-bbox="507 1256 772 1308"><b>abcd</b></td> </tr> <tr> <td data-bbox="507 1308 772 1359">TN*E</td> <td data-bbox="507 1359 772 1397">tn*e</td> </tr> </table>	ABCD	<b>abcd</b>	TN*E	tn*e	Whether transmit Start & Stop Digit.  Start / Stop transmit type
ABCD	<b>abcd</b>				
TN*E	tn*e				
Checksum <table border="1" data-bbox="507 1397 772 1496"> <tr> <td data-bbox="507 1397 772 1449"><input type="checkbox"/> Verify</td> <td data-bbox="507 1449 772 1496"><input type="checkbox"/> Transmit</td> </tr> </table>	<input type="checkbox"/> Verify	<input type="checkbox"/> Transmit	Whether verify checksum by barcode. Whether transmit checksum by barcode.		
<input type="checkbox"/> Verify	<input type="checkbox"/> Transmit				

### 3.2.2.11 Matrix 2 of 5

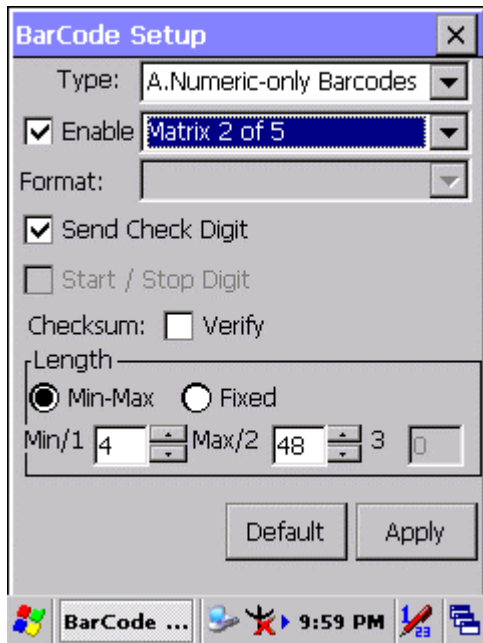


Figure 3-16 Matrix 2 of 5

Table 3-14 Matrix 2 of 5 Explaining

Item		Explaining
<input checked="" type="checkbox"/>	Send Check Digit	Whether send check digit by barcode.
Checksum	<input type="checkbox"/> Verify	Whether verify checksum by barcode.
Length	<input checked="" type="radio"/> Min-Max (Default: 4 / 48)	Min Length can be set from 4 to 48
		Max Length can be set from 4 to 48
	<input type="radio"/> Fixed	Length 1 can be set from 4 to 48
		Length 2 can be set from 4 to 48
		Length 3 can be set from 4 to 48

## B Type -- Alphanumeric Barcodes

### 3.2.2.12 Code39 / Code32

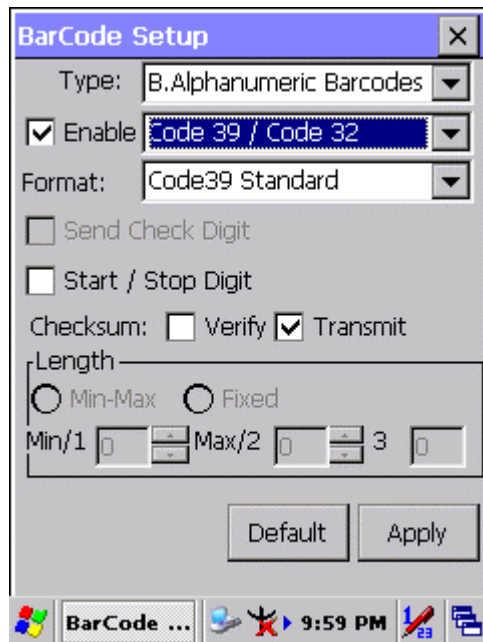


Figure 3-17 Code39 / Code32

Table 3-15 Code39 / Code32 Explaining

Item		Explaining
Format	<b>Code39 Standard</b>	Enable Code 39 Standard characters
	Code39 Full ASCII	Enable Code 39 Full ASCII character
	Code32	Enable Code 32
<input type="checkbox"/> Start / Stop Digit		Whether transmit Start & Stop Digit.
Checksum	<input type="checkbox"/> Verify	Whether verify checksum by barcode.
	<input checked="" type="checkbox"/> Transmit	Whether transmit checksum by barcode.

### 3.2.2.13 Code93

The barcode do not have setting.

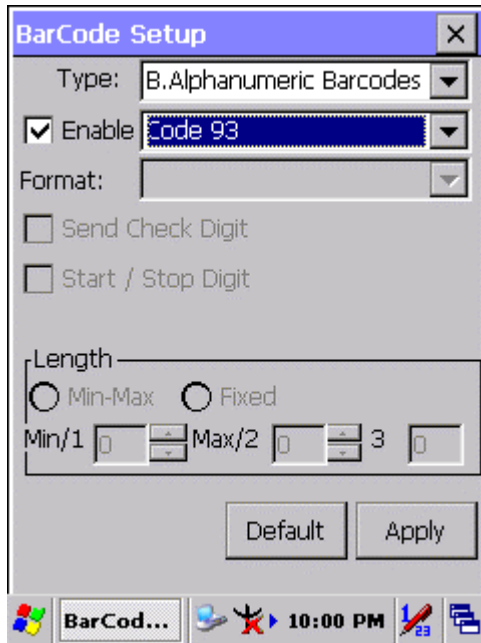


Figure 3-18 Code93

### 3.2.2.14 Code128

The barcode do not have setting.

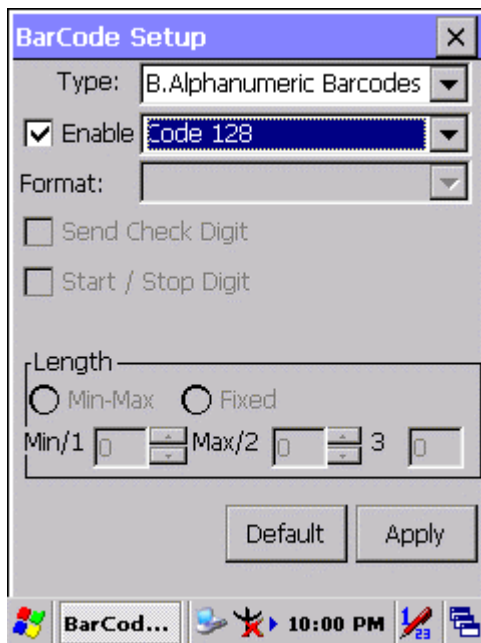


Figure 3-19 Code 128