

C Type -- Others Barcodes

3.2.2.15 China Post

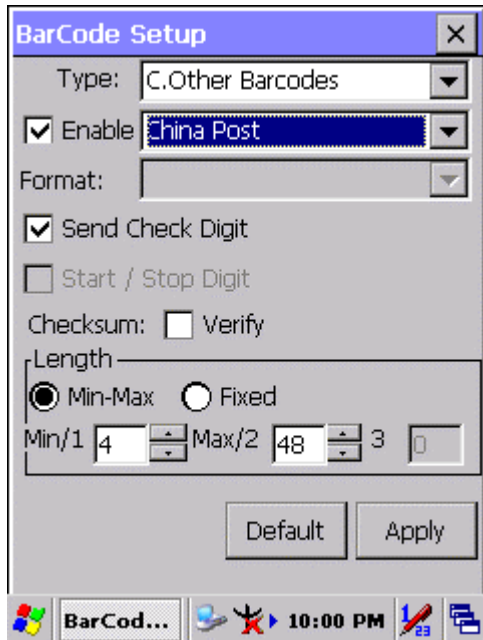


Figure 3-20 China Post

Table 3-16 China Post Explaining

Item		Explaining
Checksum	<input type="checkbox"/> Verify	Whether verify checksum by barcode.
	<input checked="" type="checkbox"/> Send Check Digit	Whether send check digit by barcode.
Length	<input checked="" type="radio"/> Min-Max (Default: 4 / 40)	Min Length can be set from 4 to 40
		Max Length can be set from 4 to 40
	<input type="radio"/> Fixed	Length 1 can be set from 4 to 40
		Length 2 can be set from 4 to 40
		Length 3 can be set from 4 to 80

3.2.2.16 Code4

The barcode do not have setting.

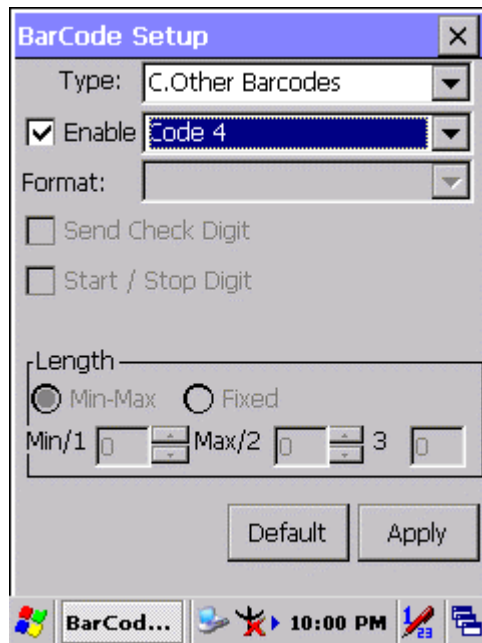


Figure 3-21 Code4

3.2.2.17 GTIN

The barcode do not have setting.

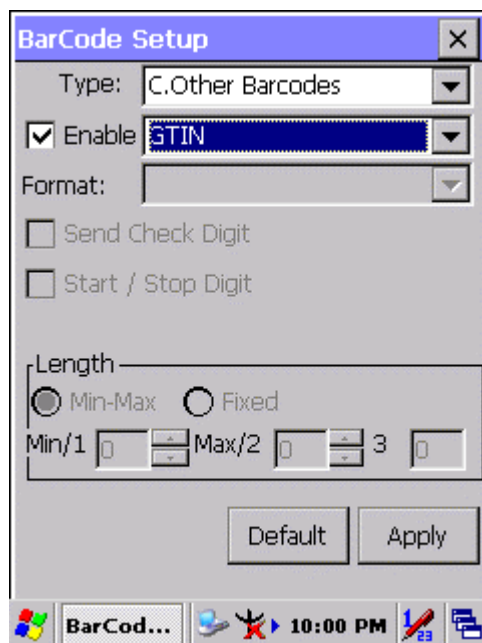


Figure 3-22 GTIN

3.2.2.18 Korea Code 3 of 5

The barcode do not have setting.

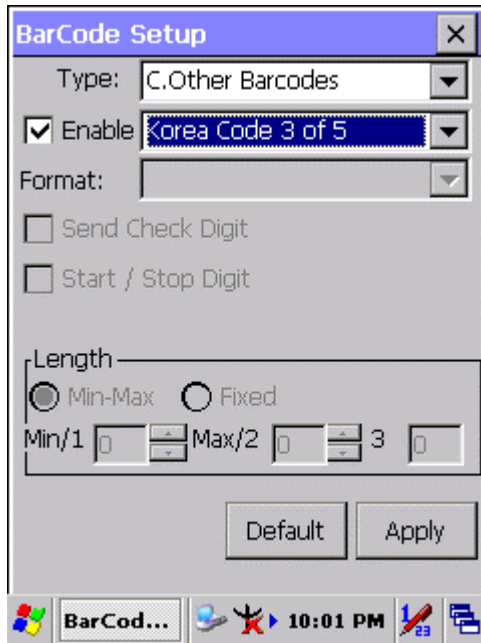


Figure 3-23 Korea Code 3 of 5

3.2.2.19 UCC EAN-128

UCC EAN-128 movements together with Code128, so should be ahead of enable Code128, ability enable UCC EAN-128.

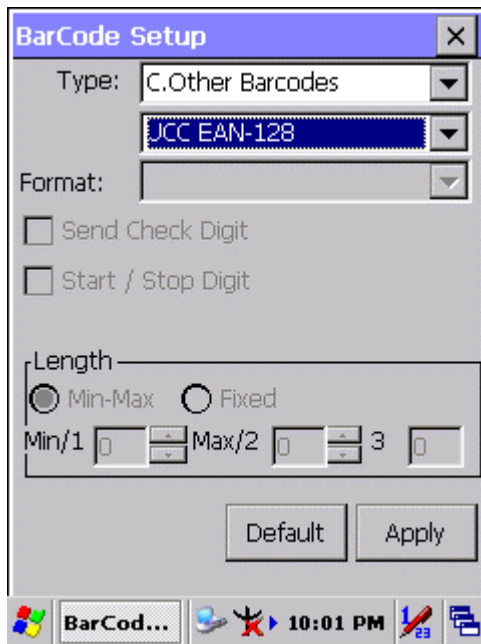




Figure 3-24 UCC EAN-128

3.2.3 Bluetooth Device Properties

Table 3-17 Bluetooth Device Properties

ICON	ITEM & FUNCTION
	<ul style="list-style-type: none"> • “Scan Device” Tab (Figure 3-25) : ✓ Tap the Scan Device button to initiate a scan for Bluetooth hardware. The Bluetooth manager lists the Bluetooth devices that it finds, see Figure 3-26. If Bluetooth hardware is not found the <i>Bluetooth Hardware Error</i> window appears, see Figure 3-27. Table 3-18 described the Bluetooth Icons. ✓ Double tap the device to connect to on the device list. The Bluetooth Manager Authentication window appears. Tap No to connect to the device without authentication, or tap Yes to authenticate the device before connecting. (Figure 3-28) ✓ If the Yes button was selected in the Bluetooth Manager Authentication window, the enter PIN windows appears. Enter a PIN (between 1 and 16 characters) in the <i>Enter PIN:</i> text box, and tap OK. The mobile computer sends the PIN request to the device for bonding. (Figure 3-29) ✓ When prompted, the same PIN must be entered on the other device. When the PIN is entered correctly on the other device, the bonded icon  appears on the device list. (Figure 3-30)

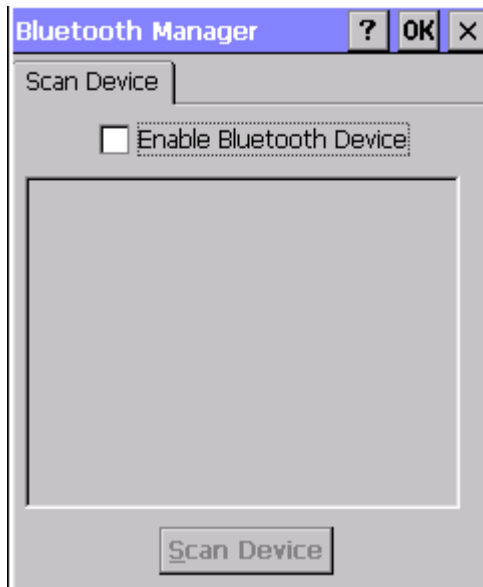


Figure 3-25 Bluetooth Manager Windows

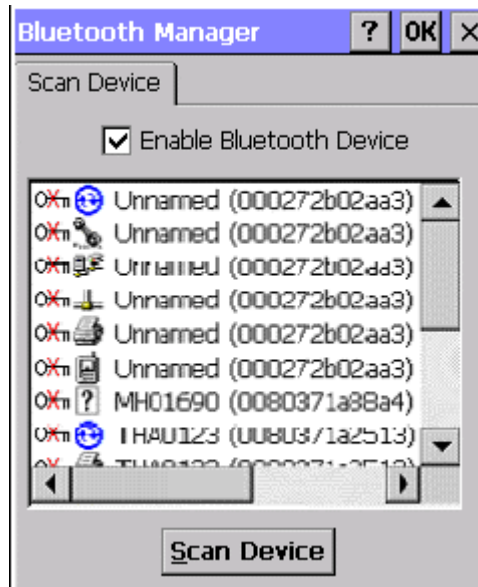


Figure 3-26 Bluetooth Manager Windows



Figure 3-27 Bluetooth Error Windows



Figure 3-28 Bluetooth Manager Windows



Figure 3-29 Bluetooth Enter PIN Windows

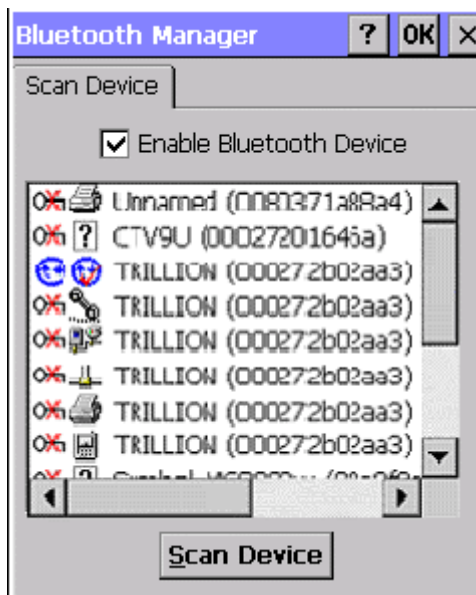







Figure 3-30 Bluetooth Manager Windows

Note: If the device to which the mobile computer is bonding does not appear in the list, ensure it is turned on, in discoverable mode, and within range (30 feet / 10 meters) of the mobile computer.

Table 3-18 Bluetooth Icon

Icon		Description
	Unknown device icon	Device is not defined
	Locked icon	Device is locked and cannot be bonded to.
	Not locked icon	Device is not locked and can be bonded to.
	Bluetooth device icon	Bluetooth device
	Bonded device icon	Bonded Bluetooth device

Icon		Description
	Mobile device icon	Device is a mobile device
	Phone icon	Device is a phone.
	Printer icon	Device is a printer
	Network icon	Device is a network.
	Linked icon	Device is linked.

3.2.4 Certificates

Certificates are used by some applications for establishing trust and for secure communications.

Certificates are signed and issued by certificate authorities and are valid for a prescribed period of time. Windows CE manages multiple certificate stores.

Table 3-19 Certificates


ICON	ITEM & FUNCTION
 Certificates	<ul style="list-style-type: none"> ● “Store” Tab (Figure 3-31) :
	<ul style="list-style-type: none"> ✓ In the Stores tab, select the certificate store you wish to view or modify from the drop-down list (Figure 3-32). ✓ The “Trusted Authorities” store lists the top-level certificates for authorities you trust.(Figure 3-33 , Figure 3-34) ✓ The “My Certificates” store contains your personal certificates, which you use to identify yourself. ✓ Intermediate certificate authorities that help establish a chain of trust are stored in the “Other Authorities” store.
	<ul style="list-style-type: none"> ● “Store” Tab :
	<ul style="list-style-type: none"> ✓ To add a certificate or associated private key to the selected store, select “Import” (Figure 3-35). ✓ To view more details of the selected certificate, such as the expanded name or expiration date, choose “View”. ✓ To delete the selected certificate from the store, choose “Remove”.



Figure 3-31 Certificates

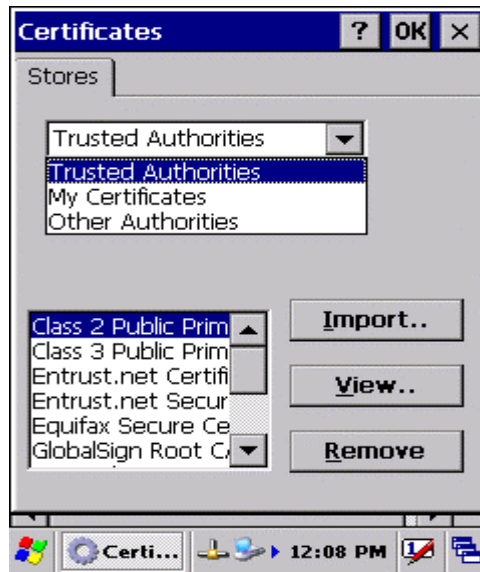


Figure 3-32 Certificates



Figure 3-33 Certificates

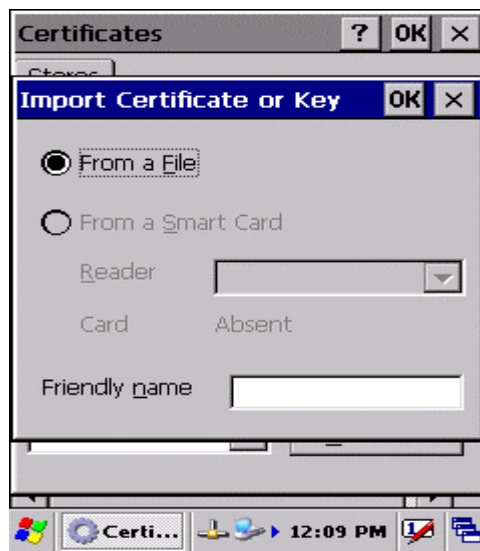


Figure 3-34 Certificates



Figure 3-35 Certificates

3.2.5 Control Center

The Control Center includes four AP, listed the following

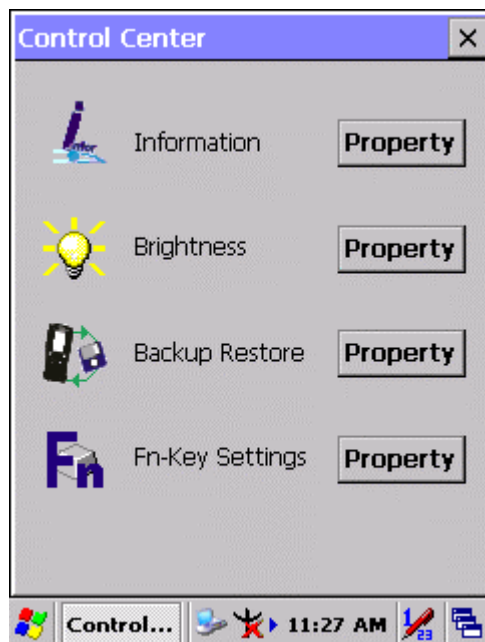



Figure 3-36 Control Center









3.2.5.1 Information

Table 3-20 Information

ICON	ITEM & FUNCTION
	<ul style="list-style-type: none">• “Information” Tab :✓ Provide Software version, MAC address, Bluetooth ID, Serial No. and Configuration No.

3.2.5.2 Brightness

Table 3-21 Brightness

ICON	ITEM & FUNCTION	
	<p>LCD Brightness Tune the LCD brightness by tapping right-arrow & left-arrow. Can also tune the LCD brightness by pressing right-direction key or left-direction key of keypad.</p>	
	<p>Amounts 7 steps: Every step have corresponding picture of self.</p> <div style="display: flex; justify-content: space-around; align-items: center;"> <div style="text-align: center;">1. </div> <div style="text-align: center;">2. </div> <div style="text-align: center;">3. </div> <div style="text-align: center;">4. </div> </div> <div style="display: flex; justify-content: space-around; align-items: center; margin-top: 10px;"> <div style="text-align: center;">5. </div> <div style="text-align: center;">6. </div> <div style="text-align: center;">7. </div> </div>	
	<input type="checkbox"/> Enable Keypad Brightness	Open keypad brightness or not.
	<p>Backlight Timeout Save battery life by automatically turning off the backlight when not used.</p>	
	<input checked="" type="checkbox"/> Battery Power, turn off backlight after	<p>The table must disable when its item is not marked.</p> <p>The table has 15 seconds, 30 seconds, 1 minute, <u>2 minutes</u> and 5 minutes.</p>
	<input type="checkbox"/> AC Power, turn off backlight after	<p>The table must disable when its item is not marked.</p> <p>The table has 15 seconds, 30 seconds, 1 minute, <u>2 minutes</u> and 5 minutes.</p>
	<input checked="" type="checkbox"/> Dim backlight after 20 seconds of idleness.	Save battery life functionally of idleness mode, open it or not.

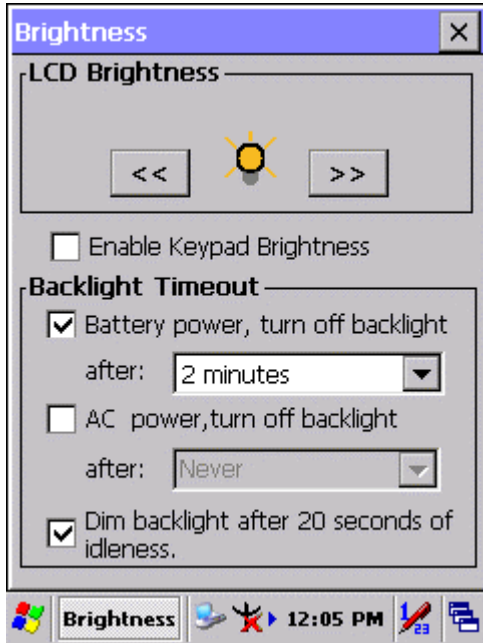
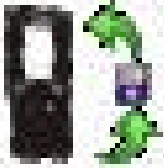


Figure 3-37 **Brightness**

3.2.5.3 Backup Restore

Table 3-22 **Backup Restore**

ICON	ITEM & FUNCTION
	<ol style="list-style-type: none"> 1. You can backup/restore system to/from flash disk or inserted memory card. (A. Disk on Chip, B. CF Card, C. SD Card) (Figure 3-38) 2. When you launch this AP, it must check backup file in DOC first. And if you select other storage, it will check again. 3. Then if it has the file, appeared its date behind “Last backup date:”; if not, disable “Restore Now” Button. 4. When you press the Backup/Restore Button will be a warning dialog pop up. (Figure 3-39) 5. When system backup/restoring finished will be a message dialog will pop up. (A. Backup: Figure 3-40, B. Restore: Figure 3-41)